



CHITTENDEN COUNTY REGIONAL PLANNING COMMISSION

OCTOBER 19, 2016

MICHELE BOOMHOWER, DIVISION DIRECTOR

POLICY, PLANNING & INTERMODAL DEVELOPMENT

&

KEVIN MARSHIA, DIRECTOR / CHIEF ENGINEER

HIGHWAY DIVISION

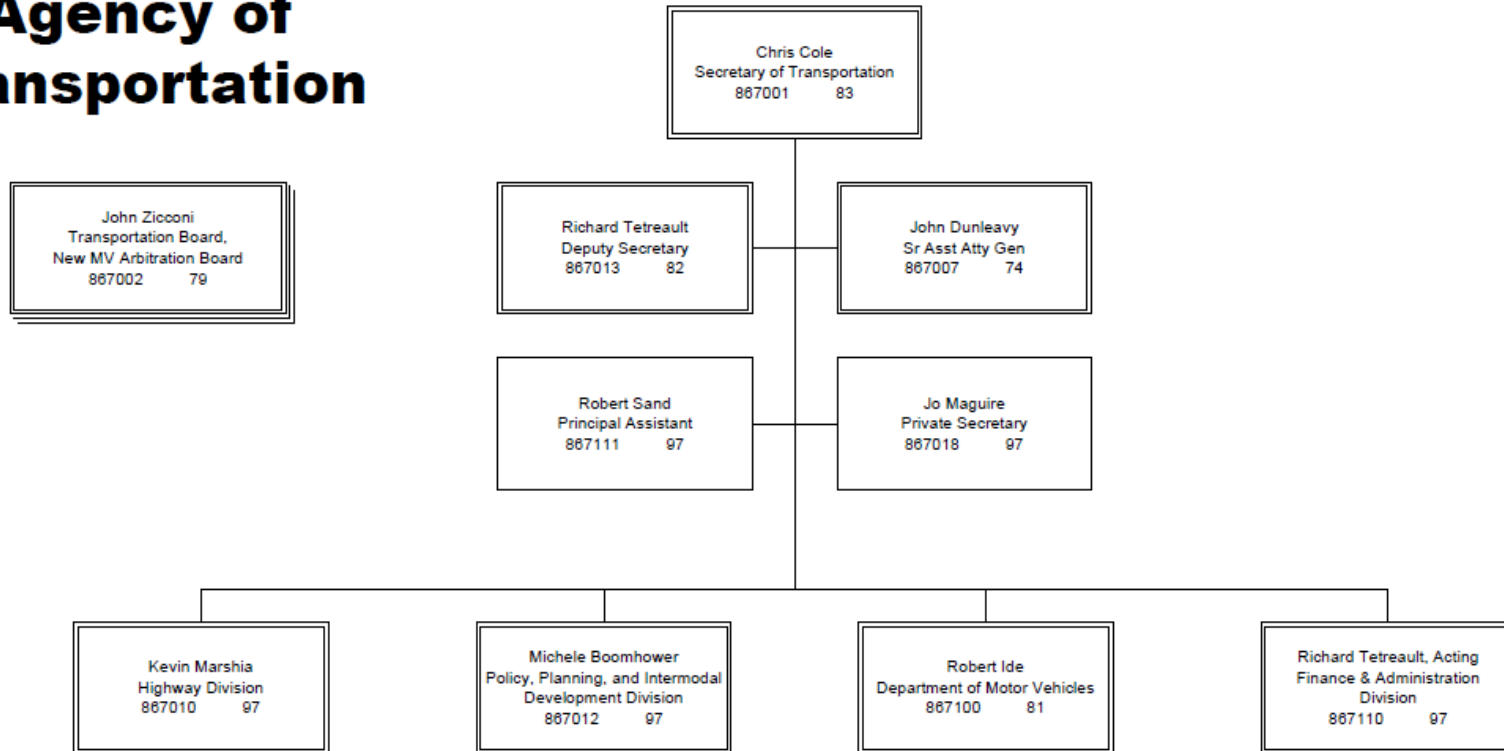


VTRANS ORGANIZATION

Agency of Transportation

Administration

Executive Staff



AGENDA

- VTRANS MISSION & VISION
- SAFETY
- ASSET MANAGEMENT:
PAVEMENT ADD ADDT'L STATEWIDE
CHART & BRIDGES
- BUDGET HISTORY
- AREAS OF FOCUS
- VTRANSPARENCY & PROJECTS



MISSION & VISION

MISSION

PROVIDE FOR THE SAFE AND EFFICIENT MOVEMENT
OF PEOPLE AND GOODS

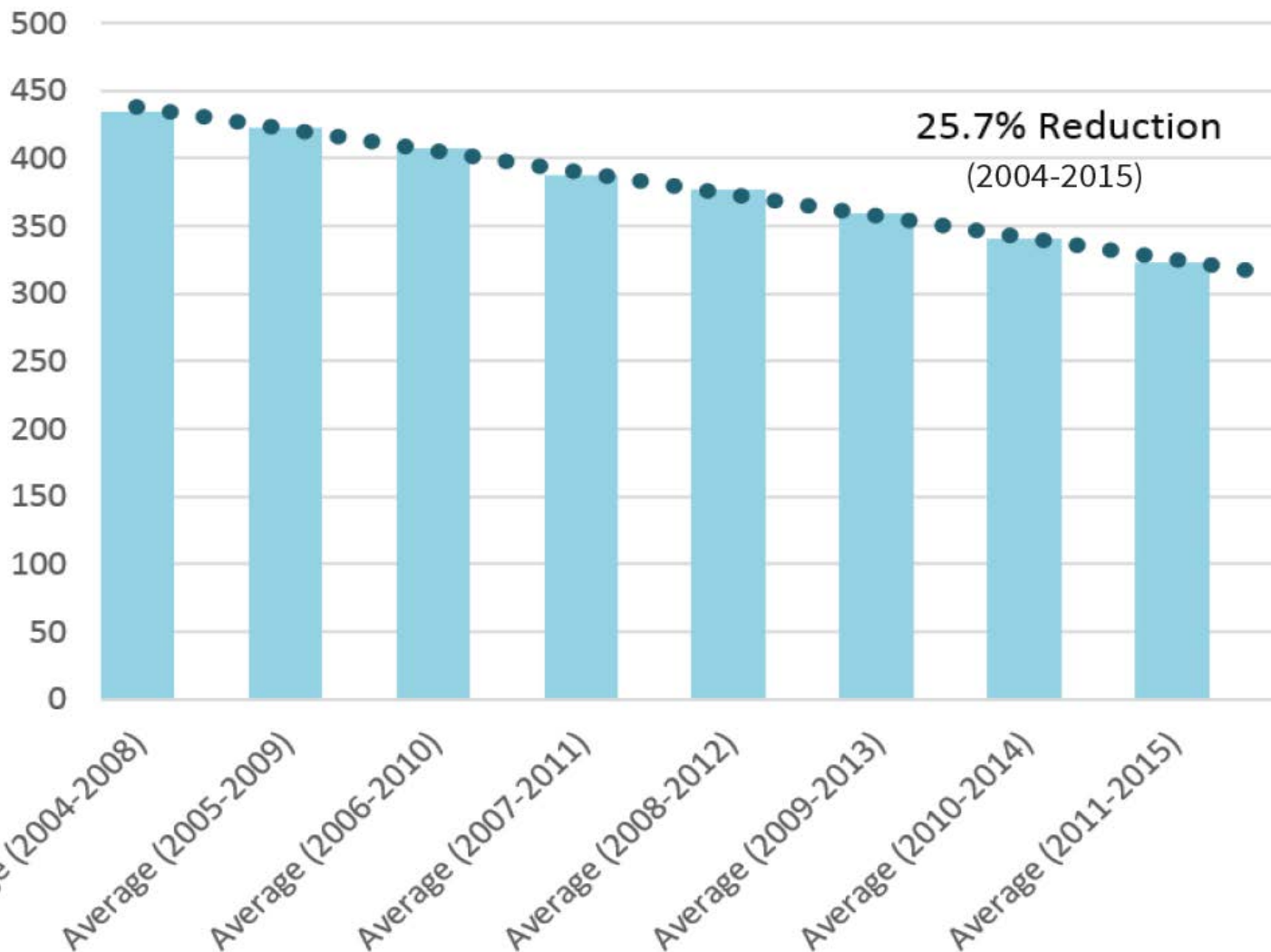
VISION

A SAFE, RELIABLE AND MULTIMODAL TRANSPORTATION
SYSTEM THAT PROMOTES VERMONT'S QUALITY OF LIFE
AND ECONOMIC WELLBEING

RPCs ARE OUR PARTNER

SAFETY

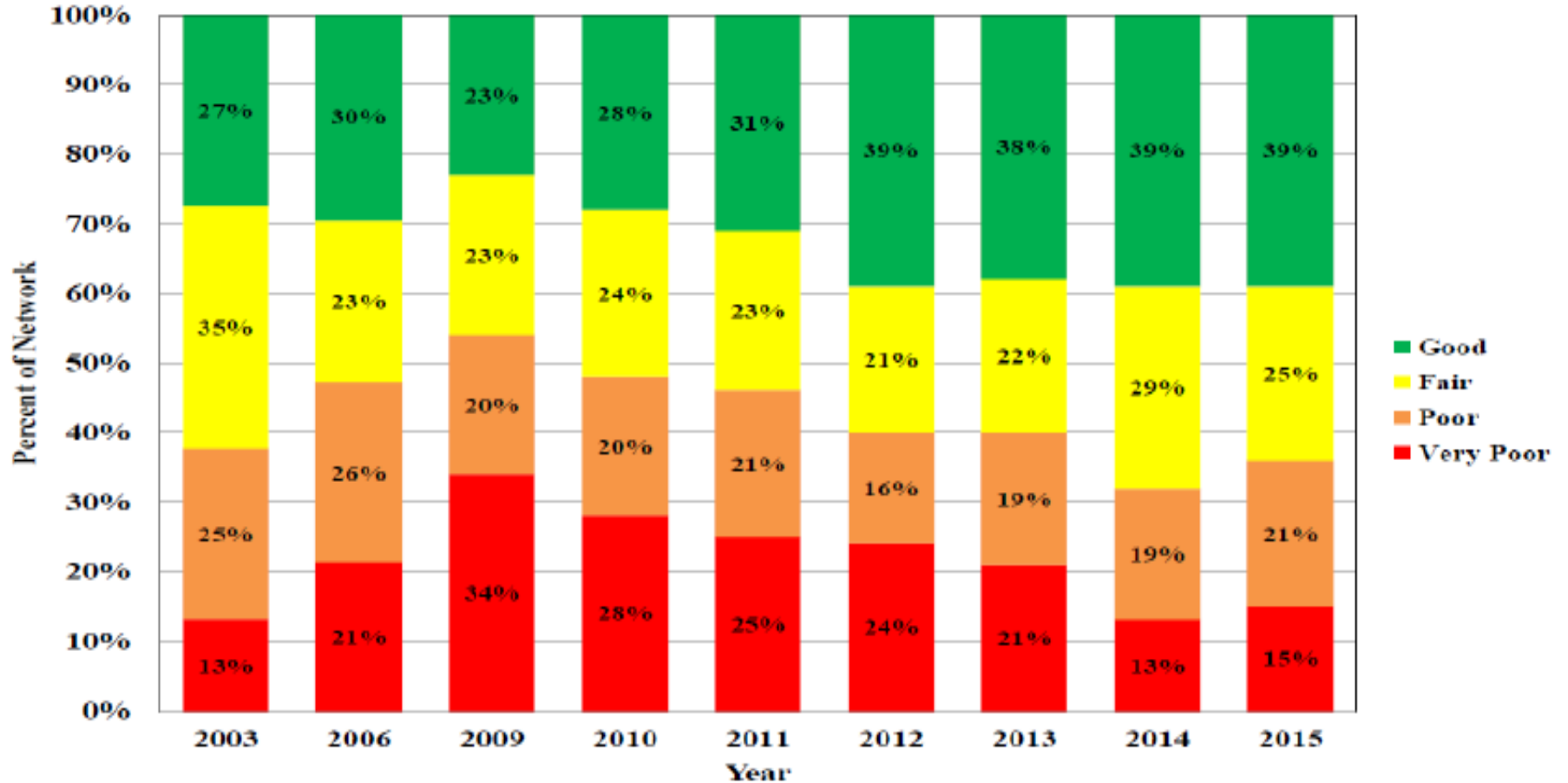
Major Crashes (Statewide)



Major Crashes	
2011	160
2012	150
2013	150
2014	132
2015	131
Total	723

ASSET CONDITIONS - PAVEMENT

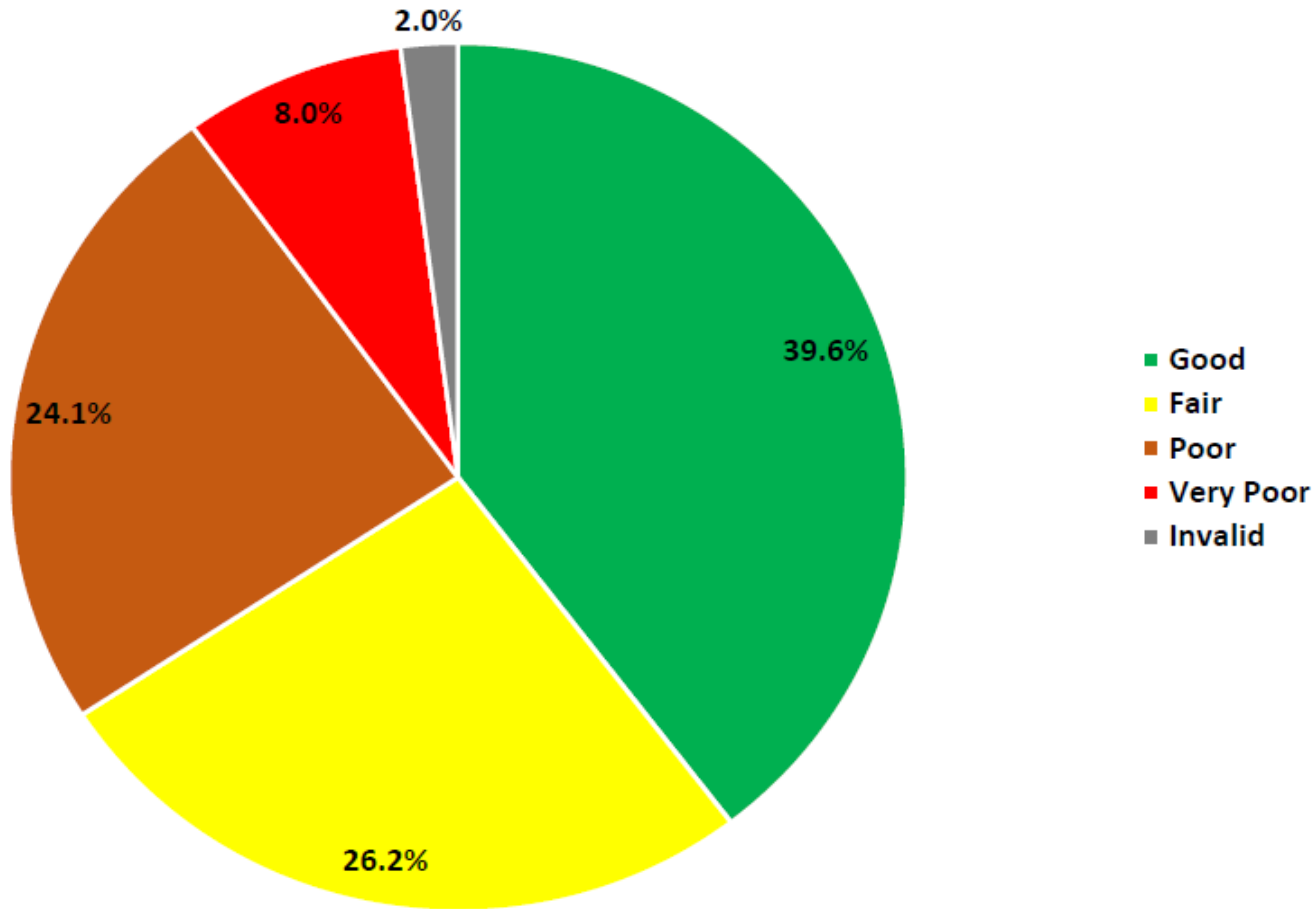
% Conditions Over Time - Unweighted



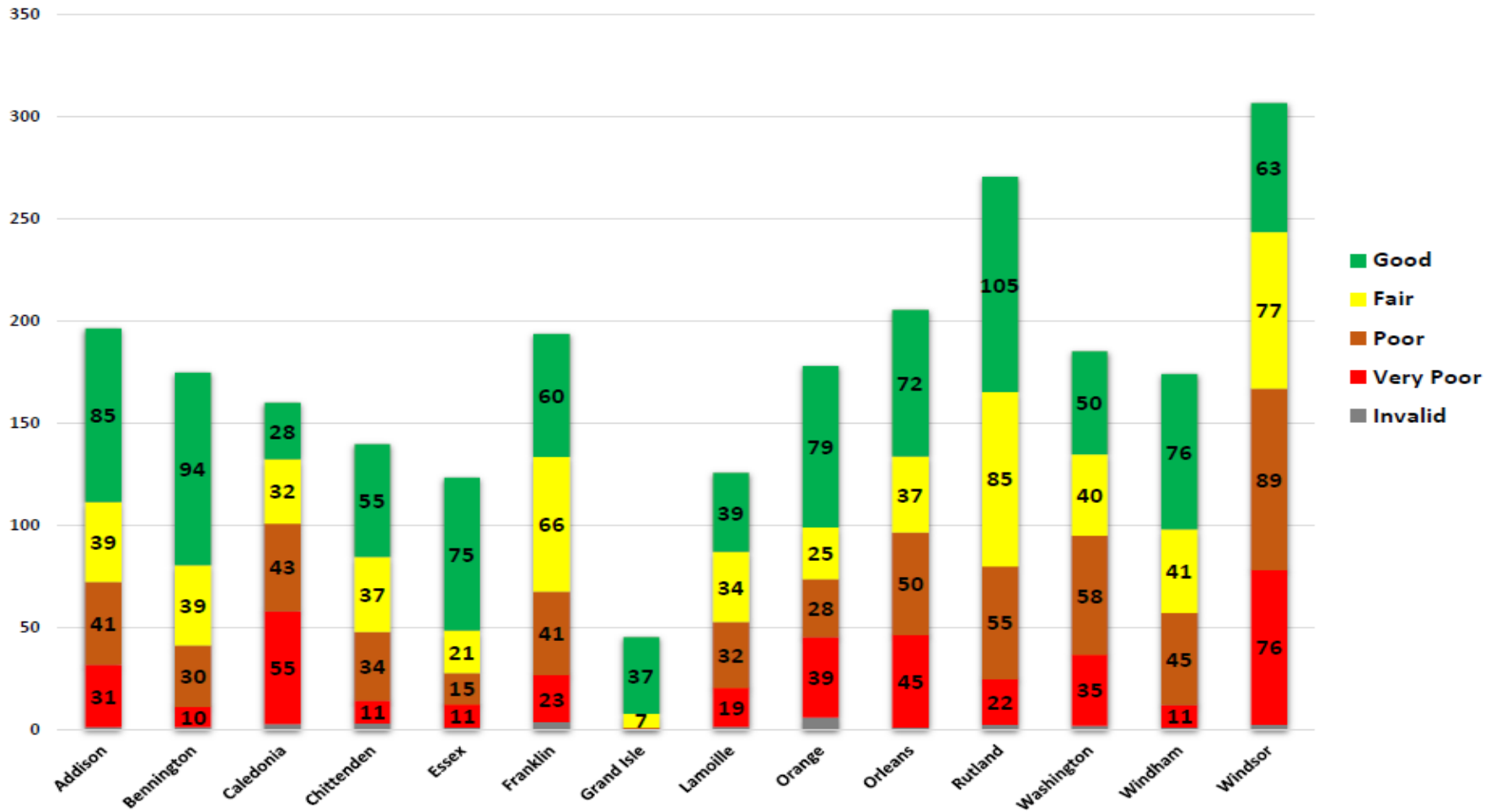
COUNTY DATA

Chittenden County Pavement Condition

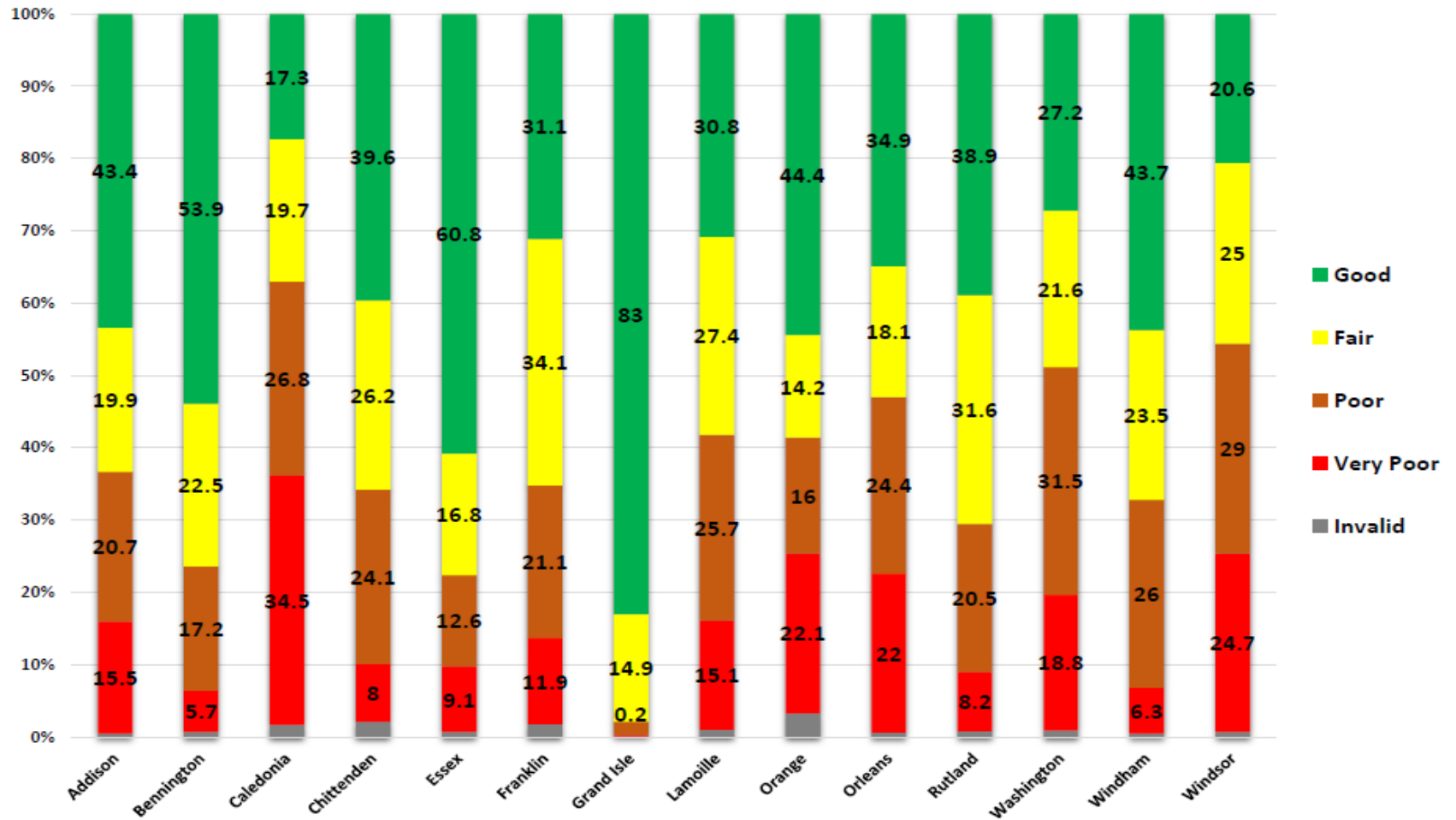
Interstate miles not included



Pavement Mileage Summary by County (Interstate mileage not included)



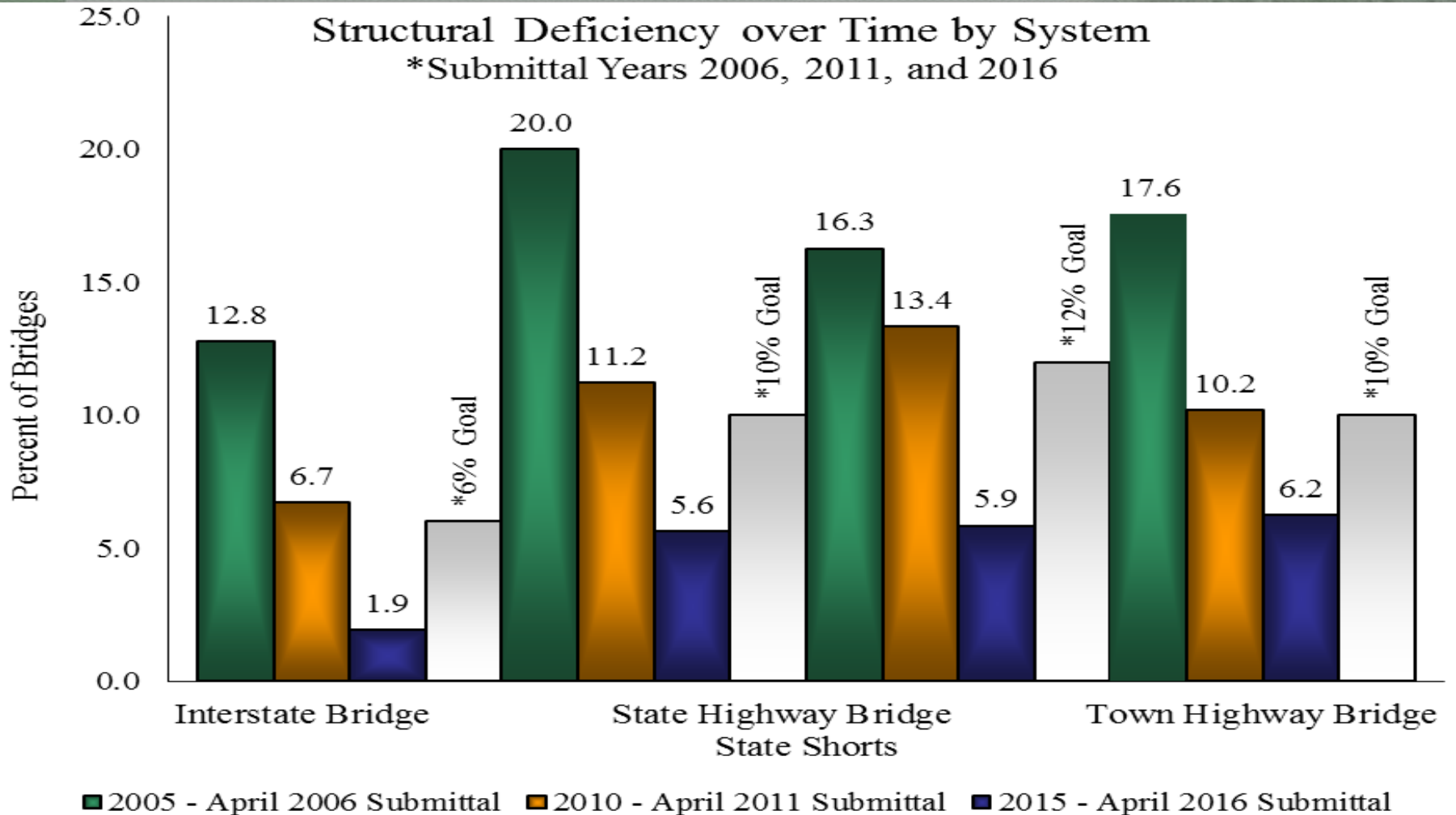
Pavement Condition Summary by County (Interstate mileage not included)



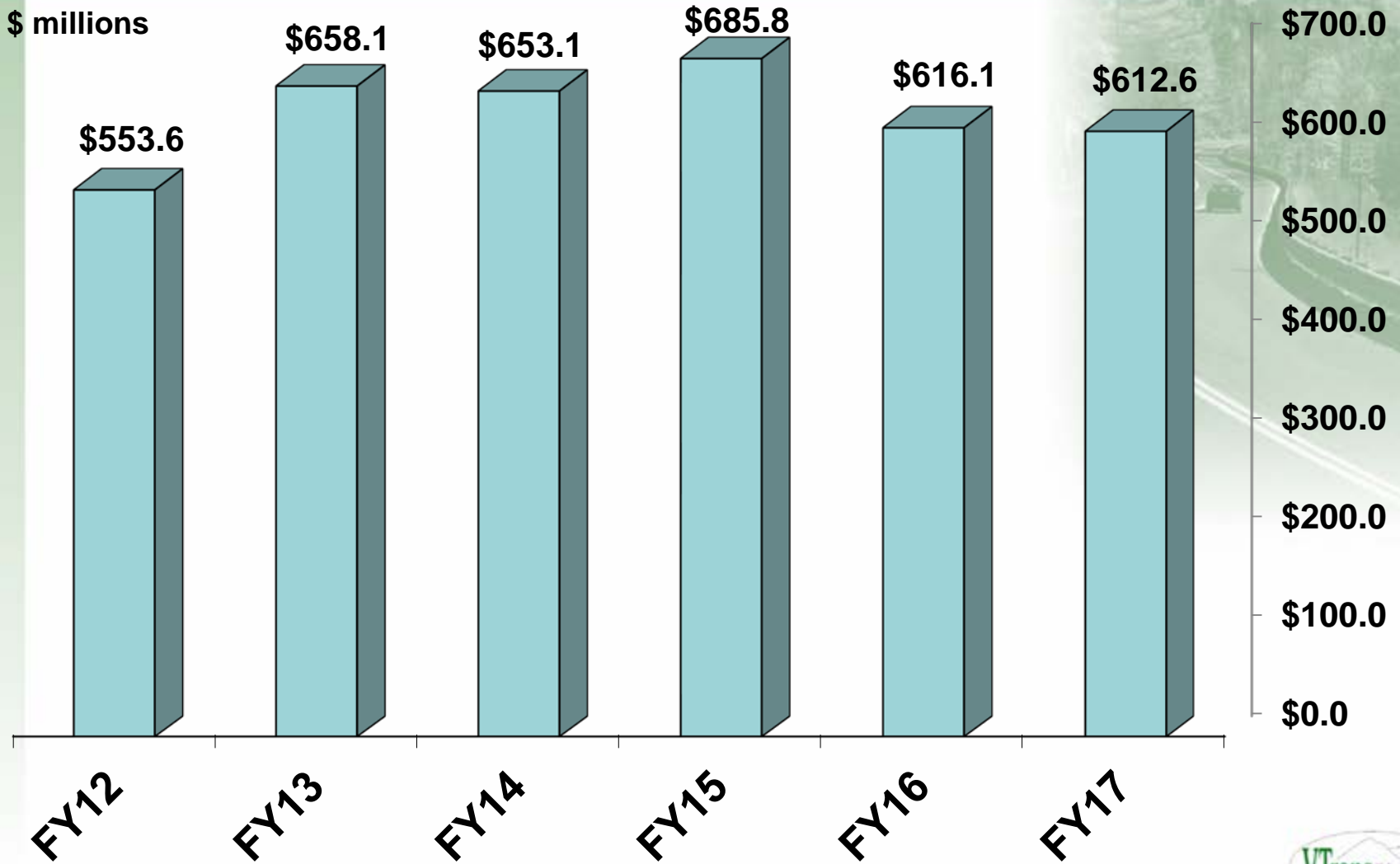
ASSET CONDITIONS - BRIDGES

Structural Deficiency over Time by System

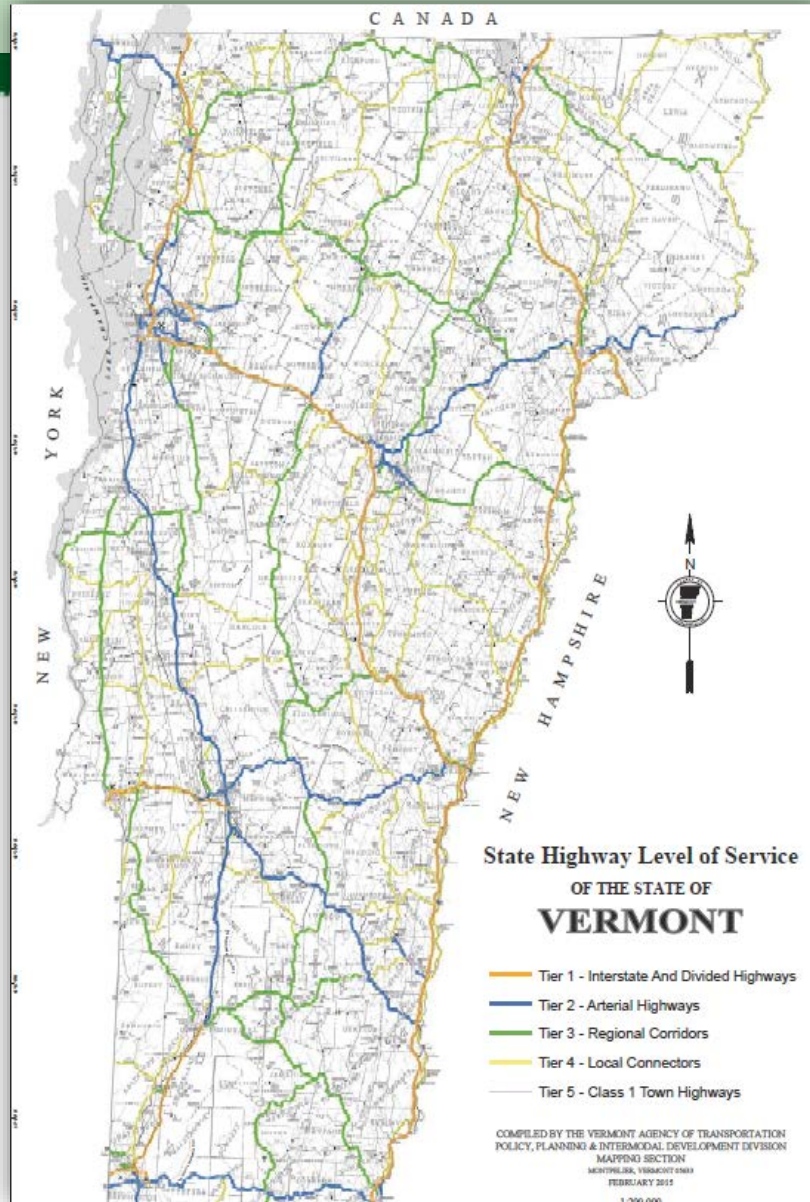
*Submittal Years 2006, 2011, and 2016



SIX YEAR BUDGET HISTORY



CUSTOMER SERVICE LEVEL



- **PRIORITIZATION OF RESOURCES**
- **ALIGNMENT OF INITIATIVES**

ON ROAD BIKE FACILITY PLAN



ENHANCE ON-ROAD BICYCLE IMPROVEMENTS ON THE STATE ROADS

PLAN PHASE 1: DETERMINE USE ON STATE ROADS USING DATA AND PUBLIC INPUT TO CREATE THE VTRANS BICYCLE CORRIDOR PRIORITY MAP. PRIORITY CORRIDORS ARE STATE ROADS CATEGORIZED INTO HIGH-, MODERATE- AND LOW-USE BASED ON CURRENT AND POTENTIAL BICYCLE USE.

PLAN PHASE 2: EVALUATE NEEDS BY IDENTIFYING ON-ROAD BICYCLE FACILITY GAPS BETWEEN PROJECT DEFINED EVALUATION CRITERIA AND CURRENT ROADWAY CONDITIONS FOR THE HIGH USE/PRIORITY CORRIDORS AND IDENTIFY BICYCLE SAFETY CONSTRAINTS ON ALL STATE ROADS.

PLAN PHASE 3: IDENTIFY IMPROVEMENT STRATEGIES ALONG HIGH-USE BICYCLE CORRIDORS AND DEVELOP AN IMPLEMENTATION PLAN BASED ON THE RESULTS OF PHASE II.

VTRANS WILL CONTINUE TO OFFER SUPPORT TO MUNICIPALITIES

VT LOCAL ROADS

- 124 TOWNS WERE VISITED IN 2015
- 137 WORKSHOPS WERE HELD WITH 1,319 TOTAL PARTICIPANTS.

RIVER AND ROAD TRAINING

- KNOWLEDGE ABOUT RIVER DYNAMICS AND TREATMENTS TO REDUCE STREAM BANK EROSION

DISTRICT STAFF TECHNICAL ASSISTANCE

- CODES & STANDARDS
- MUNICIPAL STORMWATER PERMIT
- GRAVEL ROAD TREATMENTS

GRANTS PROGRAMS

- BETTER ROADS

AREAS OF FOCUS

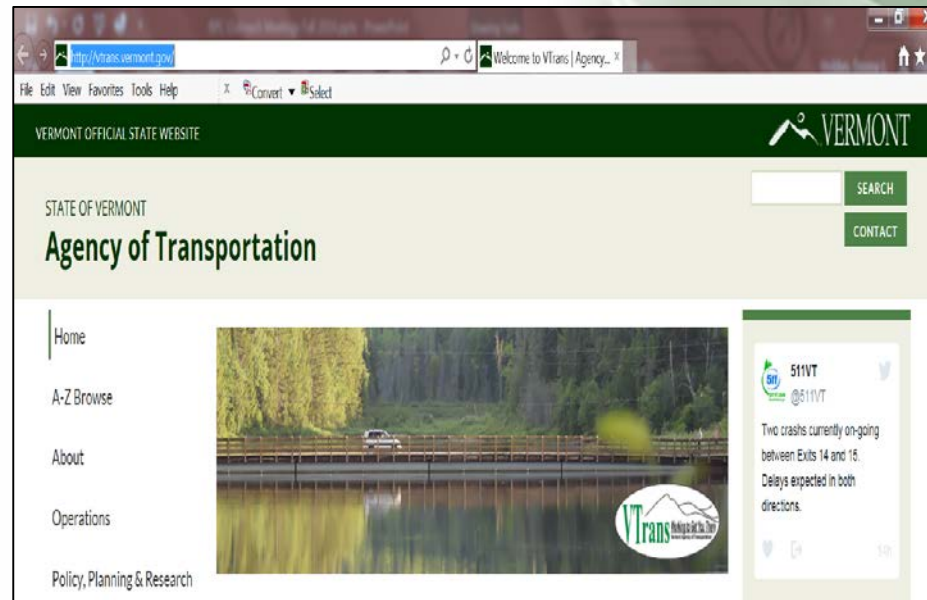
- UPDATE OF THE VERMONT STATE STANDARDS
- LONG RANGE TRANSPORTATION PLAN
- STRONGER COMMUNITIES BETTER CONNECTIONS
- CORRIDOR MANAGEMENT
- HAZARD MITIGATION WORKFORCE
- PROCESS IMPROVEMENT

How Do I Find Information?

VTRANSPARENCY

PUBLIC INFORMATION PORTAL

www.vtransparency.vermont.gov



<http://vtrans.vermont.gov>

QUESTIONS AND DISCUSSION

