

# Circ Alternatives Phase I Planning Studies

February 23, 2012

## **VT15 Multiuse Path, Essex Junction/Essex/Colchester (CircAlt SCP-13 and SCP-11)**

**Objectives:** The objective of this project is to conduct a scoping study of a multiuse path connection adjacent to VT15 from West Street in Essex Junction to Exit 15 in Winooski. Numerous previous studies have considered a path in this location. This project will build on and consolidate the previous studies into one preferred alternative. This study will develop an alignment and proposed implementation plan.

**Consultant:** Stantec has been selected to conduct this study. A proposal request has been made and the project should be underway by the end of February.

**Circ Task Force Participation Opportunities:** A Steering committee has been formed to oversee this project consisting of representatives of Essex Junction, Essex, Colchester, Local Motion and St. Michael's College. Two public meetings will be held to present outcomes of the study. Any Task Force member wishing to participate should contact Christine Forde at 660-4071 ext 13 or [cforde@ccrpcvt.org](mailto:cforde@ccrpcvt.org).

## **Pearl Street/Post Office Square Intersection Improvements and Post Office Square to Five Corners Streetscape and Bike Improvements (CircAlt SCP-12)**

**Objective:** The objectives of this project are to evaluate congestion and safety issues at the Pearl Street/Post Office Square intersection in Essex Junction and evaluate possible geometric improvements. The study will also evaluate the section of VT15 from Post Office Square to Five Corners for streetscape and bike improvements.

**Consultant:** Stantec has been selected to conduct this study. A proposal has been received and is under review. The project will be underway by the end of February.

**Circ Task Force Participation Opportunities:** Two public meetings will be held to present outcomes of the study. Any Task Force member wishing to participate should contact Christine Forde at 660-4071 ext 13 or [cforde@ccrpcvt.org](mailto:cforde@ccrpcvt.org).

**Prim Road/West Lakeshore Drive and Laker Lane/Mallets Bay Avenue Improvements, Colchester (CircAlt-PLN-19a)**

**Objective:** Conduct a Scoping Study of two VT 127 Intersections; Prim Road/West Lakeshore Drive and Laker Lane/Mallets Bay Avenue.

A scoping study of the VT127 corridor was completed in 2001. This corridor provides the only east-west connection in Colchester west of I-89. The current project will update the scoping study for the intersections of Prim Road/West Lakeshore Drive and Laker Lane/Mallets Bay Avenue and make recommendations for safety and capacity improvements in those locations.

**Consultant:** Lamoureux & Dickinson has been selected to conduct this study. A proposal request has been made and the project should be underway by the end of February.

**Circ Task Force Participation Opportunities:** One public meeting will be held to present outcomes of the study. Any Task Force member wishing to participate should contact Jason Charest at 660-4071 ext 32 or [jcharest@ccrpcvt.org](mailto:jcharest@ccrpcvt.org).

## Williston – Essex Transportation Network Study (CircAlt-PLN-20)

**Study Goal:** The goal of this study is to develop a multi-modal transportation improvement plan for the primary corridors in the study area (see figure below) to address mobility, connectivity and safety issues. The Plan will include a comprehensive and coordinated list of highway, transit, bicycle and pedestrian, and land use recommendations that satisfy the overall vision and goals of the study corridors.

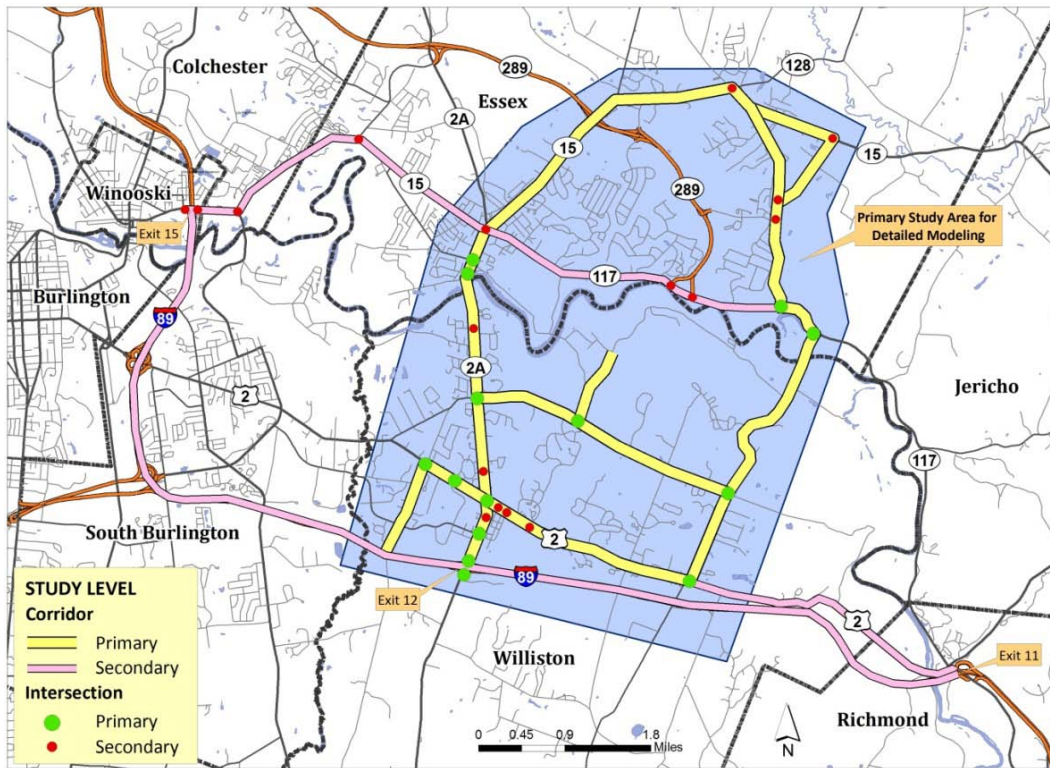
This study will occur in two phases:

**Phase I:** Evaluation of Two Major Network Strategies

- I-89 connector to Mountain View Road (the former Circ A, Alternative 13);
- A new bridge across the Winooski River.

**Phase II:** A Corridor Management approach will be used to conduct a comprehensive assessment of issues and needs for the primary corridors in the study area, and develop short, medium and long term transportation strategies and land use policies that will help achieve (over time) an agreed upon vision for the primary transportation network in the area.

### Study Area:



**Circ Task Force Participation Opportunities:** A Steering Committee has been formed with representation from Williston, Essex, Essex Junction, VTrans and other interested parties. An extensive public participation plan is being developed that will provide Task Force members with numerous opportunities for comment at critical junctures of the study. A study web site will also be developed and linked to the Circ Task Force site. Please contact Eleni Churchill at 660.4071 ext 11 or at [echurchill@ccrpcvt.org](mailto:echurchill@ccrpcvt.org) for more information on this study.

**Consultant:** Resource Systems Group (RSG) & Third Sector Associates were selected to conduct this study. Currently Consultant and CCRPC staff are working on a draft scope of work and study schedule.