

Interstate Exit 12 and Route 2A Scoping Study
Public Meeting #1 (Hosted by the Williston Planning Commission)

<http://www.ccrpcvt.org/exit12>

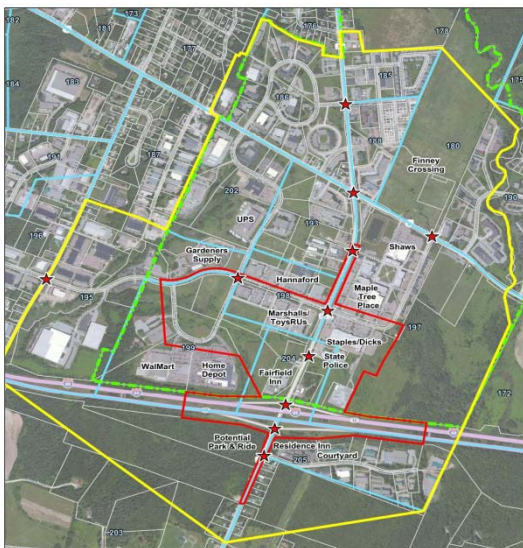
DATE: Tuesday, June 4, 2013
TIME: 7:00 – 8:00 PM
PLACE: Williston Town Hall, 7900 Williston Road
PRESENT: Please see attachment

1) Welcome & Introductions

The meeting of the Williston Planning Commission was called to order at 7:10 PM by the Chair, Jake Mathon. Ken Belliveau, the Williston Town Planner, explained that the Exit 12 Study is a result of Governor Shumlin’s announcement that the Circumferential Highway (CIRC) - as originally conceived - would not be built. The CIRC communities and the CCRPC were charged with studying the area’s transportation issues without the CIRC Highway. One of the primary recommendations of the Williston-Essex Network Transportation Study (WENTS) was to consider, in more detail, transportation improvements to Exit 12 and the surrounding area. Tonight’s meeting is to hear from the Planning Commission and the public about their thoughts and concerns regarding Exit 12.

2) Interstate Exit 12 and Route 2A Scoping Study Presentation

David Saladino of RSG discussed the history of the Circumferential Highway, the efforts made (through the CIRC Alternatives process) to identify transportation improvements in lieu of completing the Circumferential Highway, and the recommendations of the Williston-Essex Network Transportation Study (WENTS). One of the key recommendations of WENTS was to proceed with a Scoping Study to develop alternatives to improve the I-89 Exit 12 interchange and the VT 2A corridor (from approximately Hurricane Lane, south of the interchange, to the north of Marshall Avenue) in association with possible new road connectors. The major focus of the study is to determine how best to accommodate projected traffic at Exit 12 and VT 2A in the vicinity of the interchange as well as pedestrian and bicycle travel.



Existing transportation issues at Exit 12:

Congestion

- Convergence of commuters and shoppers
- Missing northbound left lane onto I-89
- Stacking on southbound I-89 off-ramp
- Traffic west of 2A funneled through Marshall Ave

Safety

- High Crash Intersections: Exit 12 SB Ramps and VT 2A/Marshall Ave
- Downhill grade to intersection, “dilemma zone”

Bike/Ped Connectivity: Missing connection from Police Barracks to Hurricane Lane

Economic Growth/Placemaking

- *“Design conscious, pedestrian-friendly, mixed-use development pattern”* (Town Plan)
- 1,900 additional peak hour trips with full build out of area
- Grid street network planned
- VT 2A cross-section (rural versus developed areas)

3) Questions & Comments

Jake Mathon: I’m concerned that the new intersection on VT 2A connecting the grid streets to Harvest Lane might make the queuing on VT 2A worse and stack cars through the interchange. Are we just moving the problem elsewhere? Dave Saladino (DS): We still have more analysis to do before we make recommendations. One potential option would be to utilize the existing terrain to create a grade-separated underpass with ramps which would eliminate the need for a new intersection at the new connector to Harvest Lane.

Michael Alvanos: Can the bridge at Exit 12 be widened to allow for turn lanes and access for bikes and pedestrians? What will it cost? DS: Everything is on the table this early in the process. Eleni Churchill (of the CCRPC): The next step in the process is to develop alternatives and analyze them against a series of criteria, including costs.

Michael Alvanos: I’m also concerned about construction disruption. Michele Boomhower (of the CCRPC): We don’t have a budget yet for construction, however, the state’s funding is limited. Cost constraints will be heavily weighted in the evaluation criteria. The selection of the preferred alternative will be a collaboration between VTrans and the Town. In terms of construction, it can be done at night to minimize disruption.

Ken Belliveau: Is there an advantage to Route 2A crossing the Interstate underneath rather than above? DS: It’s likely that the east-west terrain favors the Interstate being above 2A.

Kevin Batson: What’s the structural integrity of the Interstate bridge? DS: We don’t know that now but we will investigate further.

Kevin Batson: In terms of the proposed Park & Ride on the south side of the Interstate, the Town wanted the Park & Ride closer to the shopping centers. It’s a very difficult place for bikes and pedestrians to access. We originally understood that site was chosen to serve express buses, but now that’s not the case? Michele Boomhower: VTrans is negotiating with the landowners on the south side site (Ramsey property). The timing of construction is related to the proposed private development that would be co-located there. VTrans continues to work with the Town on a north side Park & Ride, but no appropriate sites have been identified. VTrans believes that the south side site is needed in that location, even if buses do not serve it.

There was discussion about a north side Park & Ride lot that could be served by transit. It might be attractive to people who want to park and take the bus.

There was discussion of a possible connection from Route 2A west to Harvest Lane and east near the Police barracks to the Maple Tree Place roundabout. This is a conceptual alignment at this point, with right-of-way, engineering, permitting, and cost issues to be addressed further during the course of the study.

4) Next Steps

- **Public Meeting, Purpose & Need Statement** **June**
- Alternatives Development & Evaluation June - September
- Advisory Committee Meeting #2 July 11
- Public Meeting – Review of Alternatives (PC) October
- Selection of Preferred Alternative (Selectboard) November
- Final Scoping Report February 2014

5) Study Contacts

Consultant Team Manager (RSG): David Saladino – dsaladino@rsginc.com

CCRPC Project Manager: Eleni Churchill – echurchill@ccrpcvt.org

Website: <http://www.ccrpcvt.org/exit12/>

The public meeting was adjourned at 8:00 PM.

Participants

Last	First	Affiliation	Town
Alvanos	Mike	Williston Planning Commission	Williston
Batson	Kevin	Williston Planning Commission	
Bryant	Rick	Stantec	S. Burlington
Currier	Larry		Williston
Dunn	Bill		Williston
Laska	Paul	Williston Planning Commission	Williston
Mathon	Jake	Williston Planning Commission	Williston
Michaud	Jay		Williston
Scott	Bob		Westford
Turner	Dave		Williston
Walsh	Tom	Williston Planning Commission	Williston

Williston Planning Department Staff Present: Ken Belliveau, Matt Boulanger, Rick McGuire

CCRPC Staff Present: Michele Boomhower, Eleni Churchill

Exit 12 Scoping Study Advisory Committee Members Present: Meredith Birkett (CCTA); Jeff Nick (Business Community); Josh Schultz (VTrans); Jason Van Driesche (Local Motion)

Consultants: Dave Saladino (RSG); Diane Meyerhoff (Third Sector Associates)