

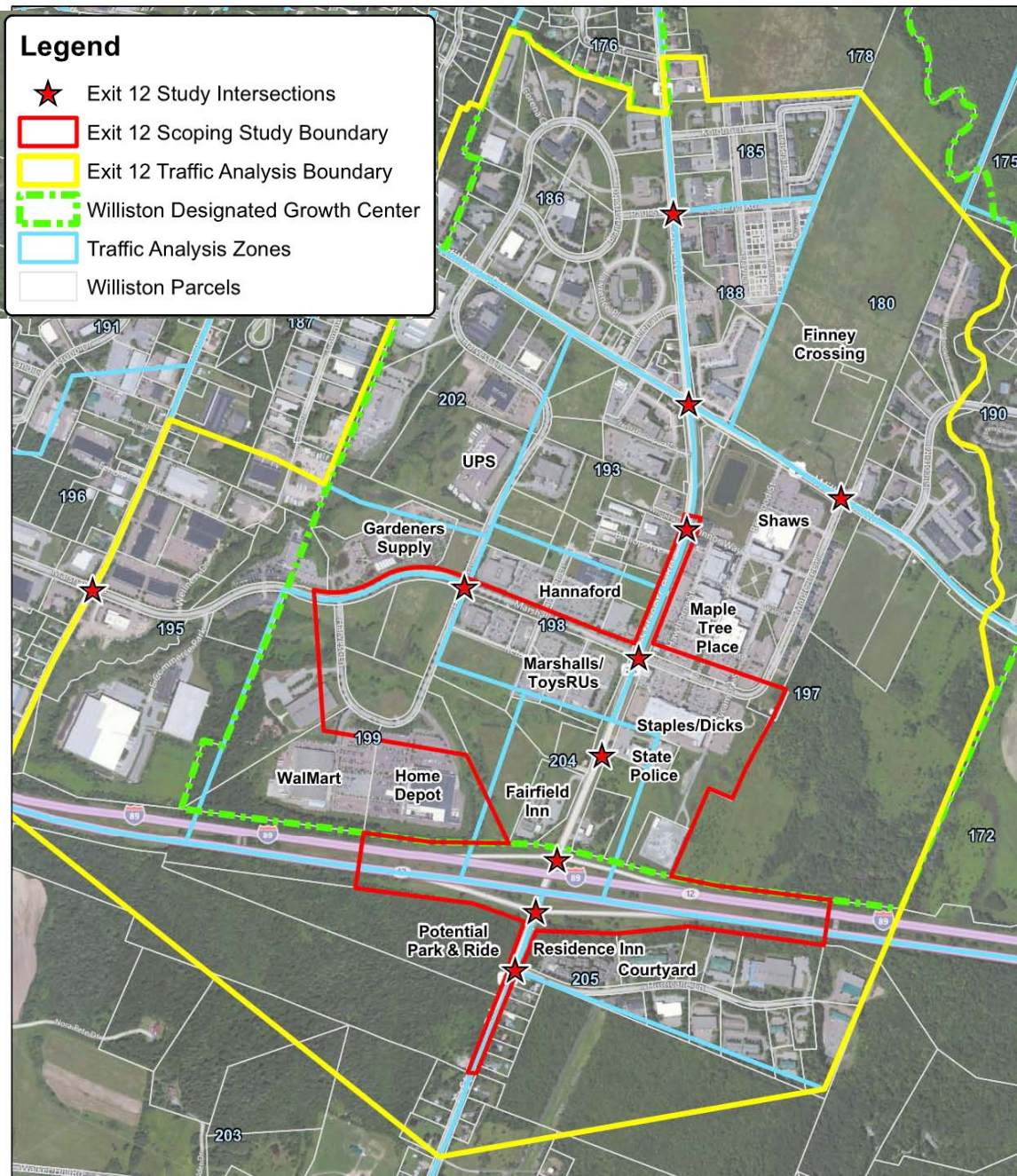
Public Meeting #1

HOSTED BY:
Williston Planning Commission

June 4, 2013

- Project Introduction & Background
- Project Area
- Existing Conditions and Issues
- Thoughts & Input
- Next Steps

Project Introduction



Investigate transportation alternatives that address existing & projected **traffic congestion**, enhance **safety** for all users, improve **bike-pedestrian connections** through the interchange, and accommodate **economic growth** in the area.

Project Background – CIRC Alternatives Task Force

- **Commissioned after the Governor’s announcement that the Circ highway – as originally conceived – will not be built**
- **Task Force Objective: Identify Transportation Improvements in the former Circ Highway Communities of Williston, Essex, Essex Junction, Colchester**
- **Three Phases of Implementation and Planning Projects were endorsed by the CIRC Alternatives Task Force**
 - **Williston-Essex Network Transportation Study (WENTS):**

Develop a multi-modal transportation improvement plan for the study area (parts of Williston, Essex and Essex Junction) to address mobility, connectivity and safety issues. The Plan will include a comprehensive and coordinated list of highway, transit, bicycle, pedestrian, and land use recommendations that satisfy the overall vision and goals of the area

—

Project Background - WENTS Capacity Recommendations

1. Towers Road / VT 128/ VT 15 Intersection
2. North Williston Road / US 2 / Oak Hill Road Intersection
3. North Williston Road / VT 117 Intersection
4. Industrial Ave / Mountain View / VT 2A Intersection & VT 2A Corridor Segment
5. **New interchange configuration at Exit 12 plus consideration of new “local street connections”**



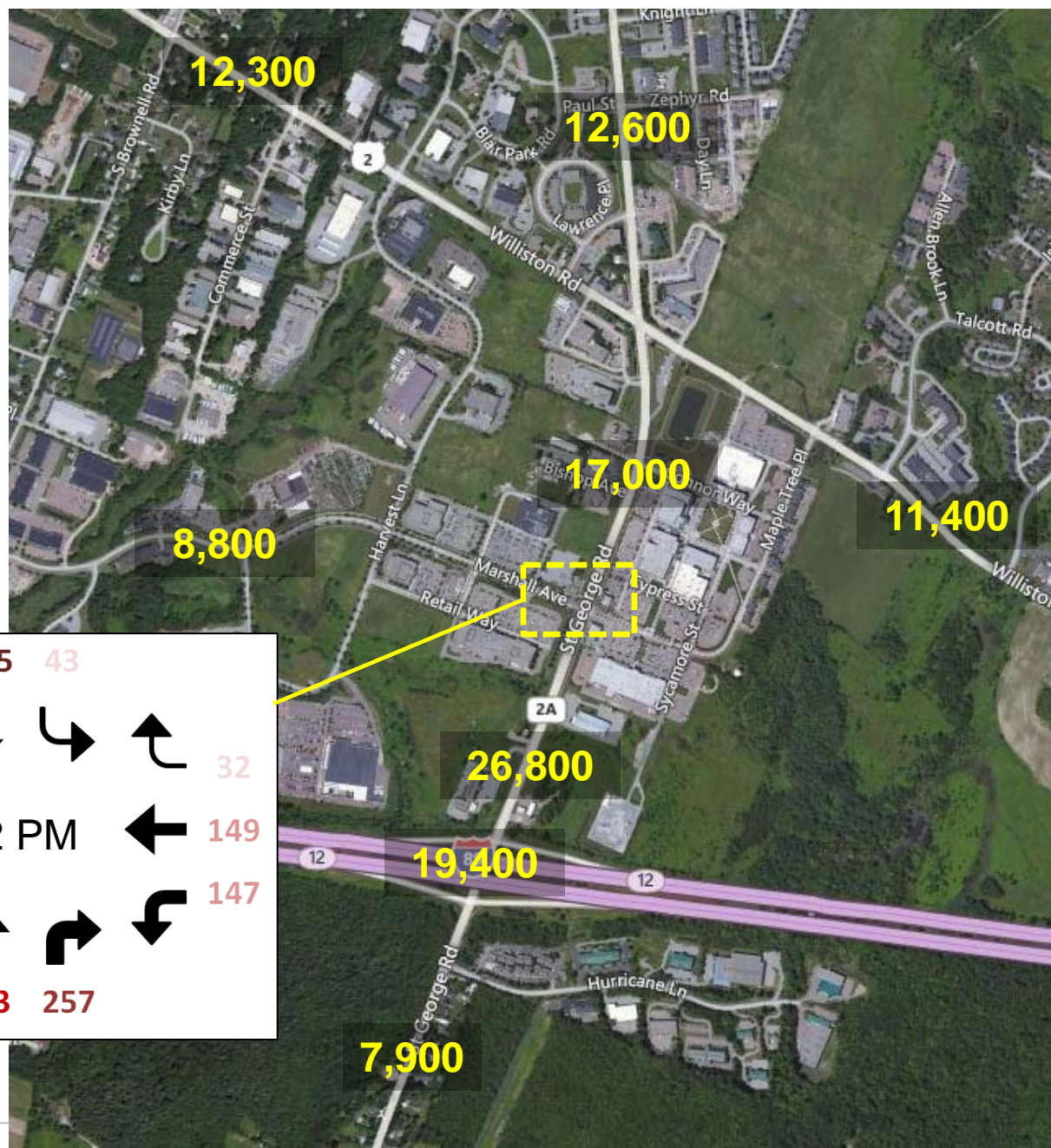
Exit 12 Project Area

Legend

- ★ Exit 12 Study Intersections
- Exit 12 Scoping Study Boundary
- Exit 12 Traffic Analysis Boundary
- Williston Designated Growth Center
- Traffic Analysis Zones
- Williston Parcels



Existing Traffic Volumes in Study Area



Existing Transportation Issues at Exit 12

■ Congestion

- Convergence of commuters and shoppers
- Missing NB left lane onto I-89
- Stacking on SB I-89 off-ramp
- Traffic west of 2A currently funneled through Marshall Ave



Level of Service 2015 / 2035



Existing Transportation Issues at Exit 12

- Congestion

- Safety

- High Crash Intersections

- Exit 12 SB Ramps

- VT 2A/Marshall Ave

- Downhill grade to intersection, long “dilemma zone”



HCL #37
73 crashes in
five years

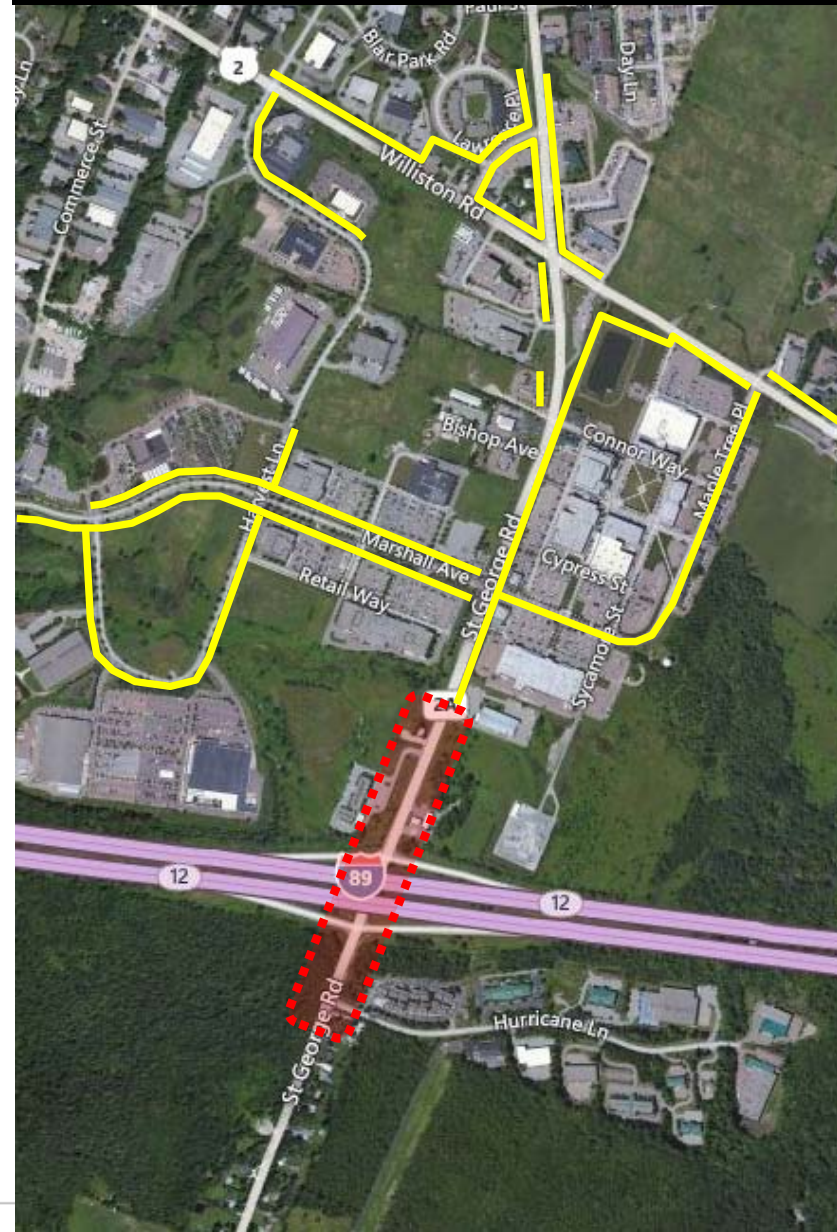
HCL #123
19 crashes in
five years

Existing Transportation Issues at Exit 12

- Congestion
- Safety
- Bike/Ped Connectivity
 - Missing connection from Police Barracks to Hurricane Lane



Existing Bike/Ped Network



Existing Transportation Issues at Exit 12

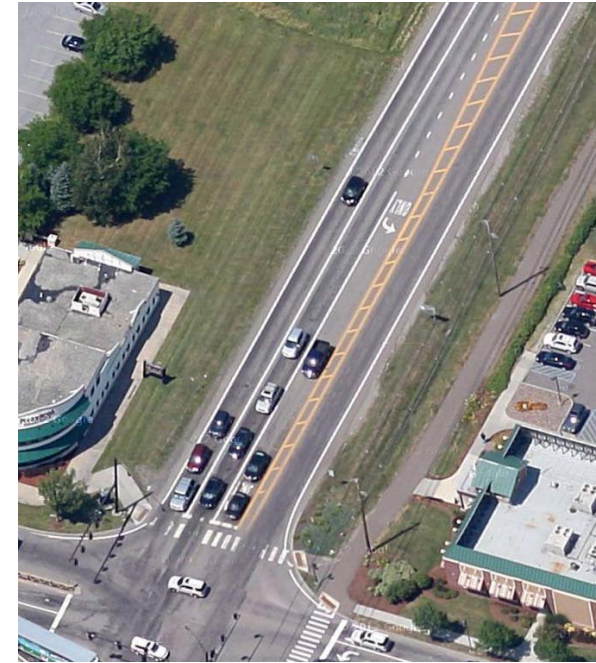
- Congestion
- Safety
- Bike/Ped Connectivity
- Economic Growth/Placemaking
 - “Design conscious, pedestrian-friendly, mixed-use development pattern”
 - 1,900 additional peak hour trips
 - Grid street network
 - VT 2A cross-section

Grid Street Build-out

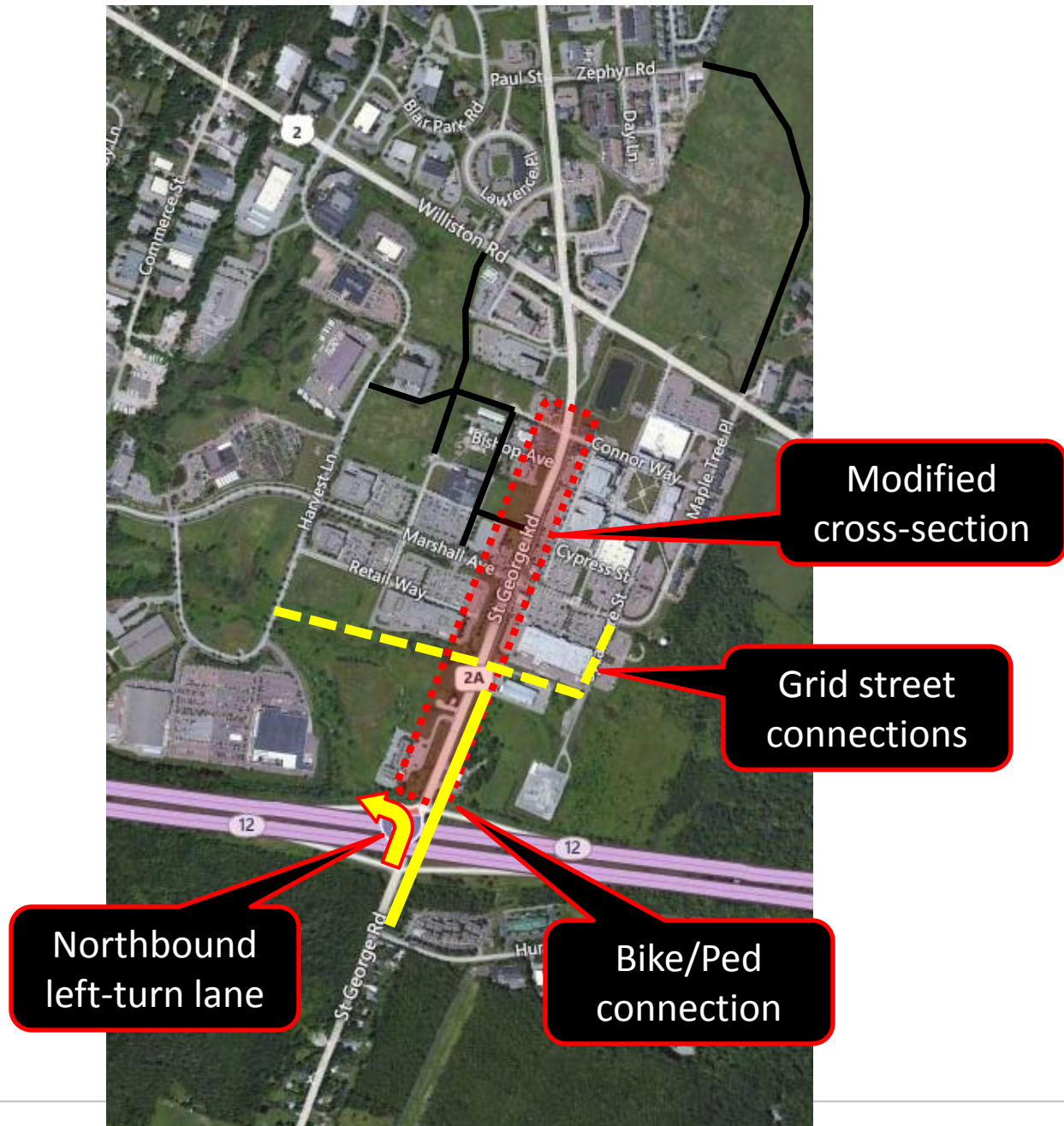


Existing Transportation Issues at Exit 12

VT 2A Cross-Section: *Rural vs. Developed Areas*



Thoughts & Input



Next Steps

- Project Start-Up, Data Gathering April - May
- **Public Meeting, Purpose & Need Statement** June
- Alternatives Development & Evaluation June - September
- Public Meeting - Review of Alternatives October
- Selection of Preferred Alternative November
- Final Scoping Report February 2014

Consultant Team Manager (RSG)

[David Saladino - dsaladino@rsginc.com](mailto:dsaladino@rsginc.com)

CCRPC Project Manager

[Eleni Churchill - echurchill@ccrpcvt.org](mailto:echurchill@ccrpcvt.org)

Website

<http://www.ccrpcvt.org/exit12/>