



Railyard Enterprise Project

Steering Committee Meeting #5

December 11, 2013

Agenda

- Welcome & Introductions
- Public Comment
- Project Status and Related Initiatives
- Review Phase 2 Alternatives
- Railyard Operations (presentation by VHB)
- Phase 2 Evaluation Criteria
- Next Steps

Railyard Enterprise Project Base Map



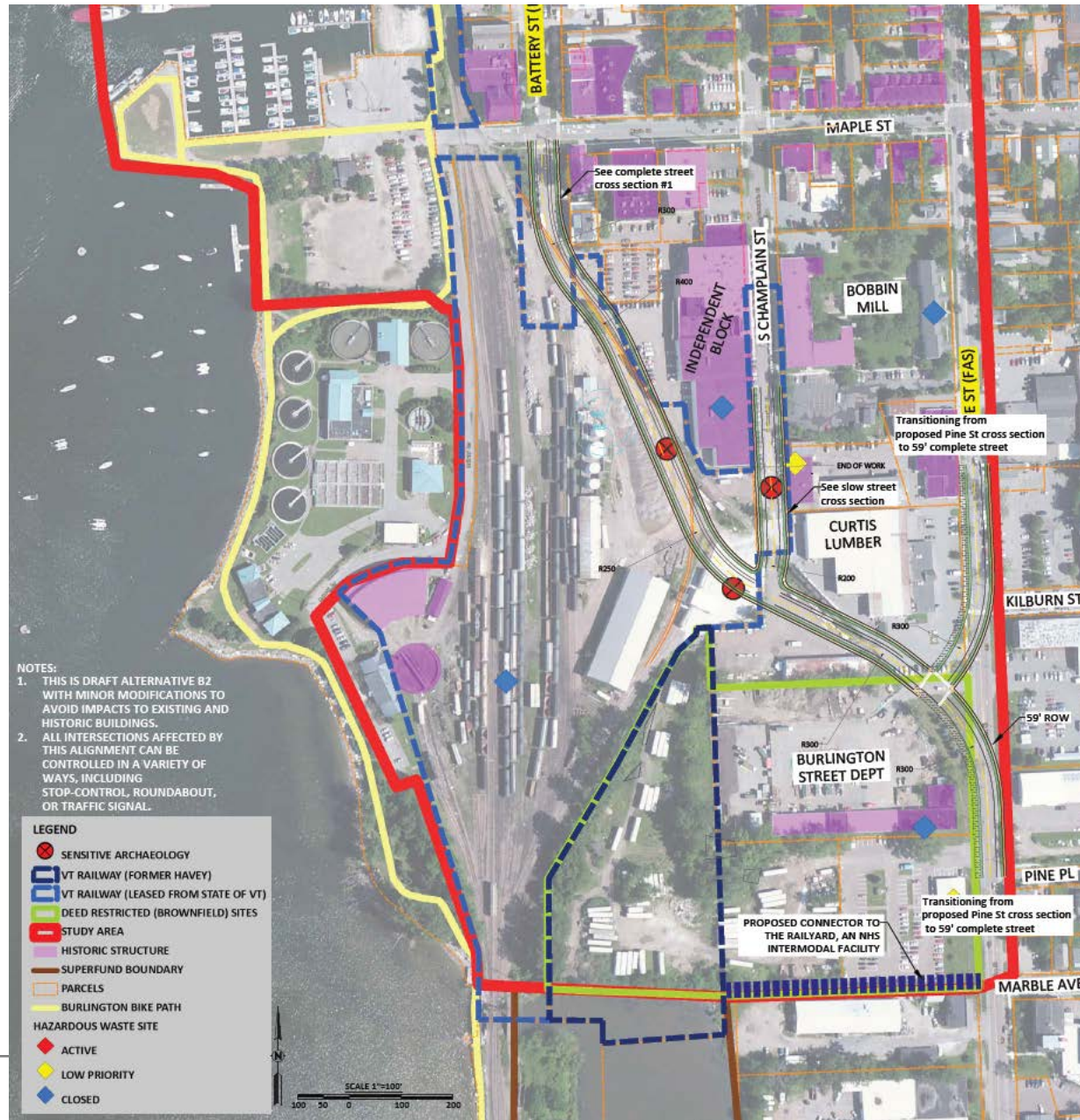
12/11/13
RSG

Purpose & Need Statement

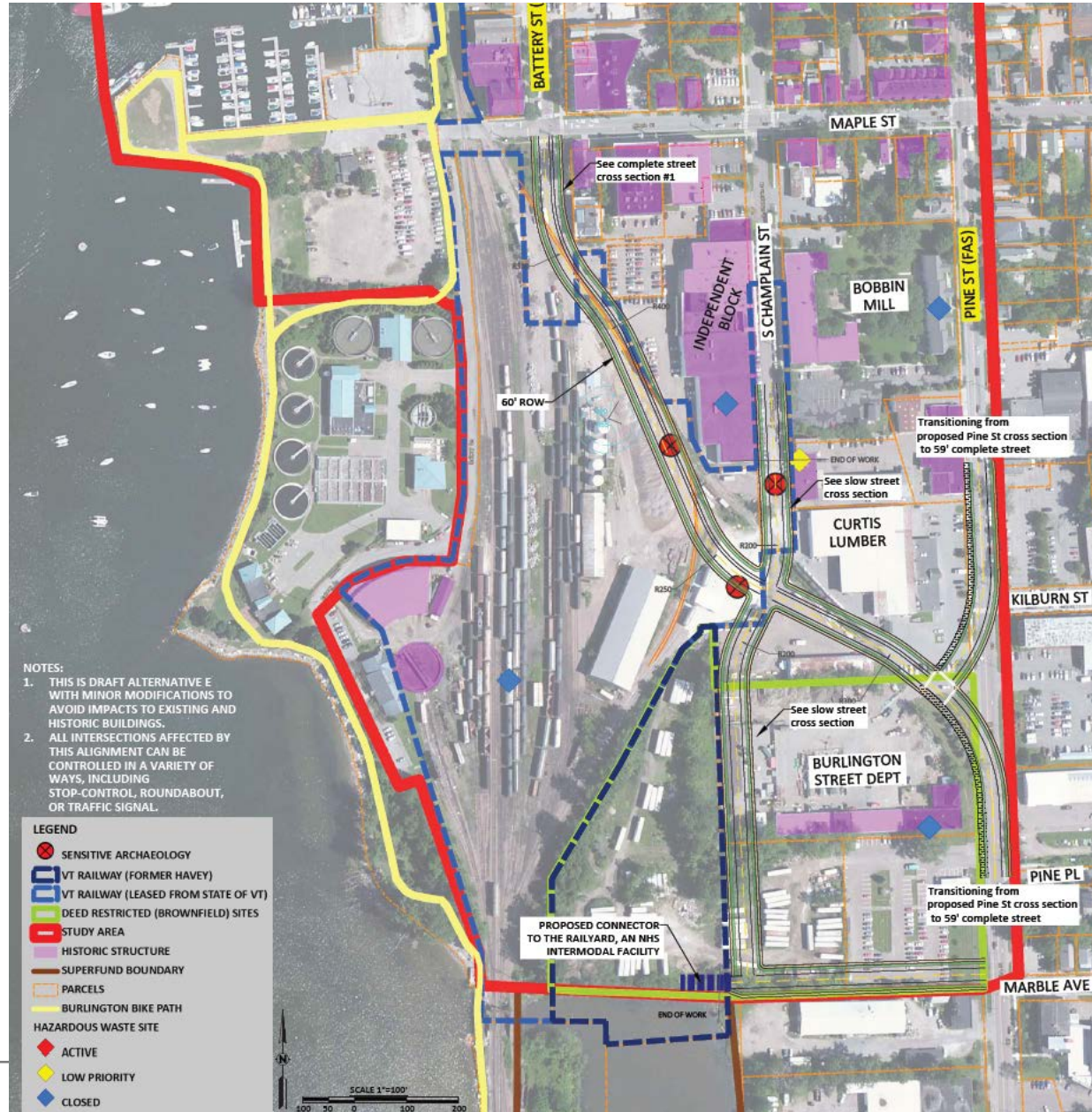
The purpose of the Railyard Enterprise Project is to develop a network of multimodal transportation infrastructure improvements to...

1. Support economic development in the study area;
2. Improve livability of the surrounding neighborhoods;
3. Enhance travel connections for all modes between the Pine Street and the Burlington Waterfront;
4. Improve access to the Burlington Railyard.

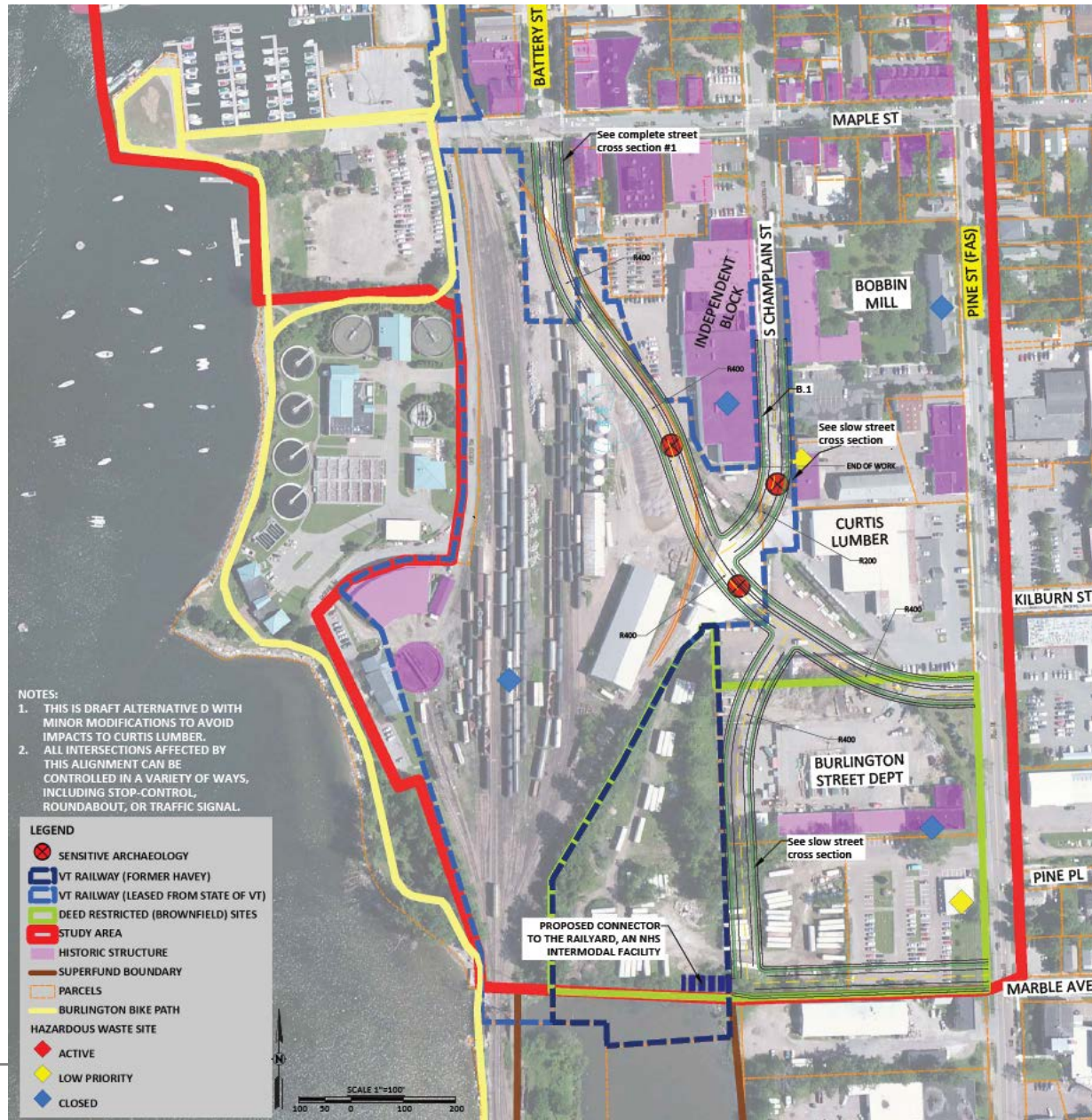
Phase 2 Alternative A1



Phase 2 Alternative A2



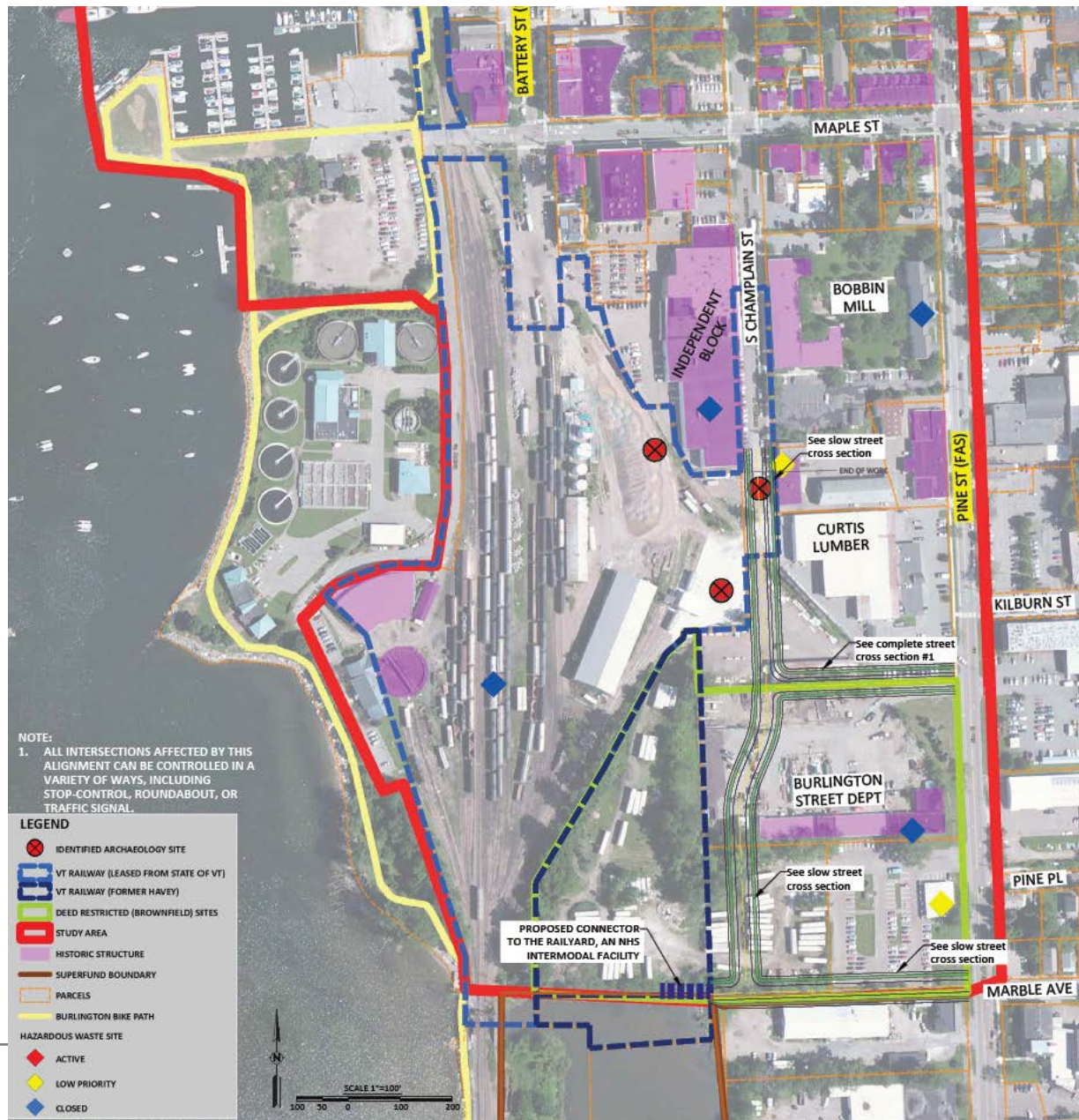
Phase 2 Alternative B



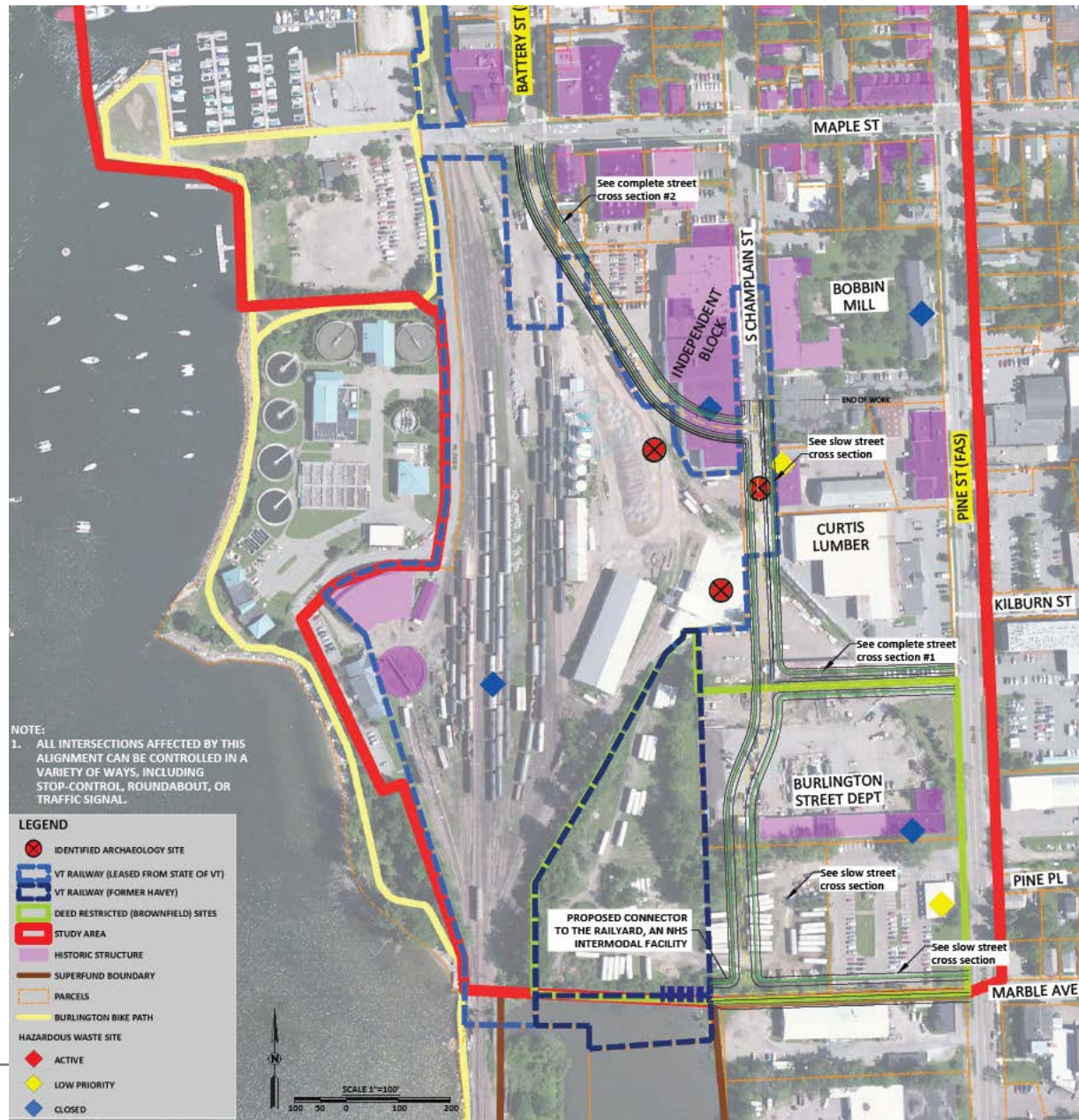
Phase 2 Alternative C1



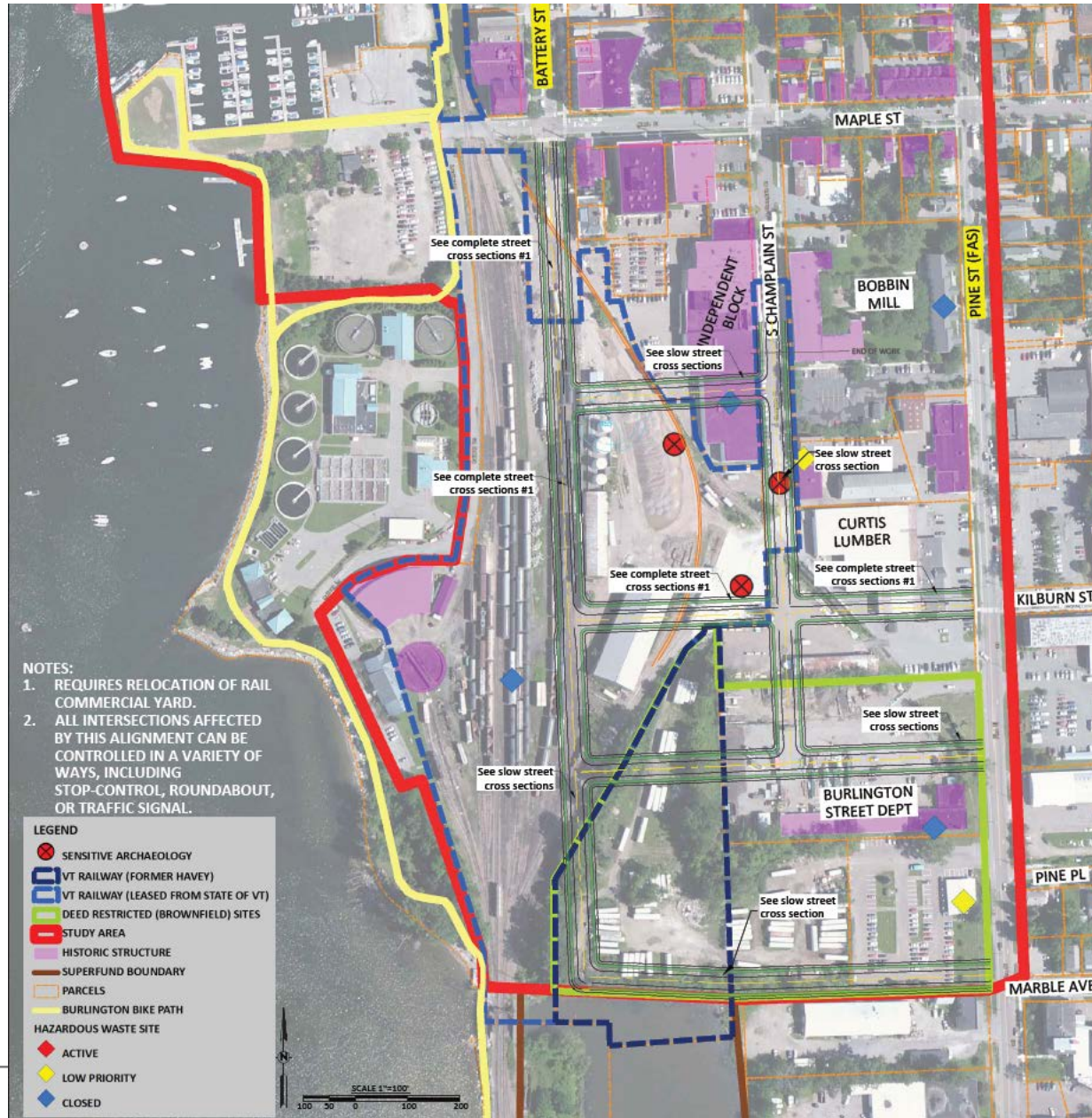
Phase 2 Alternative C2



Phase 2 Alternative D



Phase 2 Alternative E





Presentation of Railyard Operations

Evaluation Criteria for Phase 2 Alternatives

Resource and Other Impacts:

- Historic and Archaeological Sites
- Right-of-Way (property, businesses, etc.)
- Hazardous Waste Sites/Brownfields
- Railyard
- Utilities (electric, telecommunications, stormwater)
- Wetlands, Rare Species, Floodplain, Water Resources
- Conformance to Town and Regional Plans
- Environmental Justice

Traffic Performance (Level of Service)

Estimated Costs

Do alternatives meet the Project's Purpose and Need? To what degree do they:

- Promote economic development
- Enhance multimodal transportation
- Support Livability in adjacent neighborhoods
- Improve access to the Railyard

Next Steps

- Evaluation of Phase 2 Alternatives (December/January)
- Steering Committee Meeting #6 (January/February)
- Alternatives Presentations (February/March)
- Initial/Final Scoping Reports (Spring 2014)
- EIS, 2014-15



Contacts

Robert Chamberlin

Consultant Team Manager (RSG)

robert.chamberlin@rsginc.com

Eleni Churchill

CCRPC Project Manager

echurchill@ccrpcvt.org

Project Web Site

<http://www.ccrpcvt.org/transportation/scoping/railyard-enterprise-project>