



Chamberlin Neighborhood Airport Area Transportation-Land Use Study

CROSBY | SCHLESSINGER | SMALLRIDGE LLC

Third Sector Associates

Assisting nonprofits and their communities to succeed.



Community Meeting

May 27, 2015

Chamberlin Neighborhood Airport Area Transportation-Land Use Study - Community Listening Session

1. Welcome – Paul Conner, South Burlington City

2. Background

- Project Objectives
- Chamberlin Neighborhood-Airport Planning Committee
- Project Area
 - Land Use and Open Space (Carole Schlessinger)
 - Urban Form (Skip Smallridge)
 - Multimodal Transportation (Bob Chamberlin)
 - Airport Master Plan (Gene Richards)

3. Small Group Discussions

4. Report Back at 8:30



Chamberlin Neighborhood Planning Project Objectives

1. **Build a good working relationship between the Chamberlin Neighborhood and the Airport.**
2. **Facilitate development of a neighborhood land use/transportation plan that:**
 - a. Strengthens the neighborhood;
 - b. Seeks to retain affordability of housing;
 - c. Relates the neighborhood to development of City Center, reinvestment along Williston Road, implementation of SB School District plans, and any planned transportation improvements in the vicinity of the project area; and,
 - d. Results in an improvement plan for parks, streetscape, and other public amenities.
3. **Identify multimodal transportation connections/improvements**, both transitional and long-term, that enhance neighborhood mobility and livability, while maintaining efficient ground access to the airport.
4. Develop, with collaborative input, **a vision for the neighborhood that can help shape the re-use of Acquisition Land** as described in the Re-Use Plan the airport develops every 5 years in compliance with Airport Improvement Program Grant conditions.



Chamberlin Neighborhood Planning Project Objectives and End Goal

1. Build a good working relationship.
2. Identify multimodal transportation connections/improvements.
3. Develop a vision for the neighborhood that can help shape the re-use of Acquisition Land.
4. Develop a neighborhood land use/transportation plan.

End Goal – Develop Recommendations for the Consideration of the Planning Commission and City Council

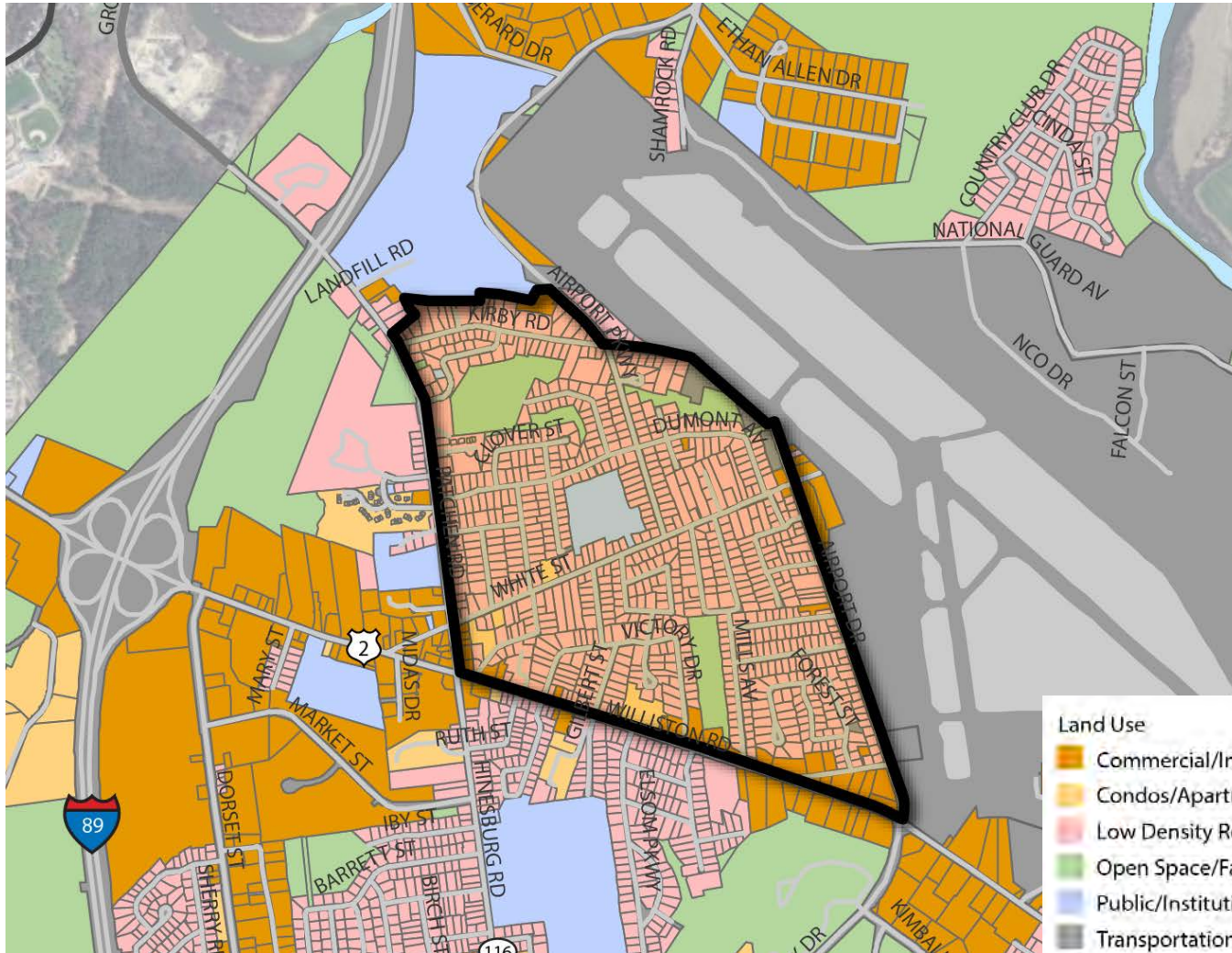


Chamberlin Neighborhood Airport Planning Committee

- Tracey Harrington
- Pat Nowak
- Karsten Schlenter
- Walden Rooney
- Greg Severance
- Marc Companion
- Lisa LaRock
- George Maille
- Kim Robison
- Carmine Sargent, Chair
- John Simson
- Patrick Clemins
- Linda Brakel
- Bill Keogh
- Dave Hartnett



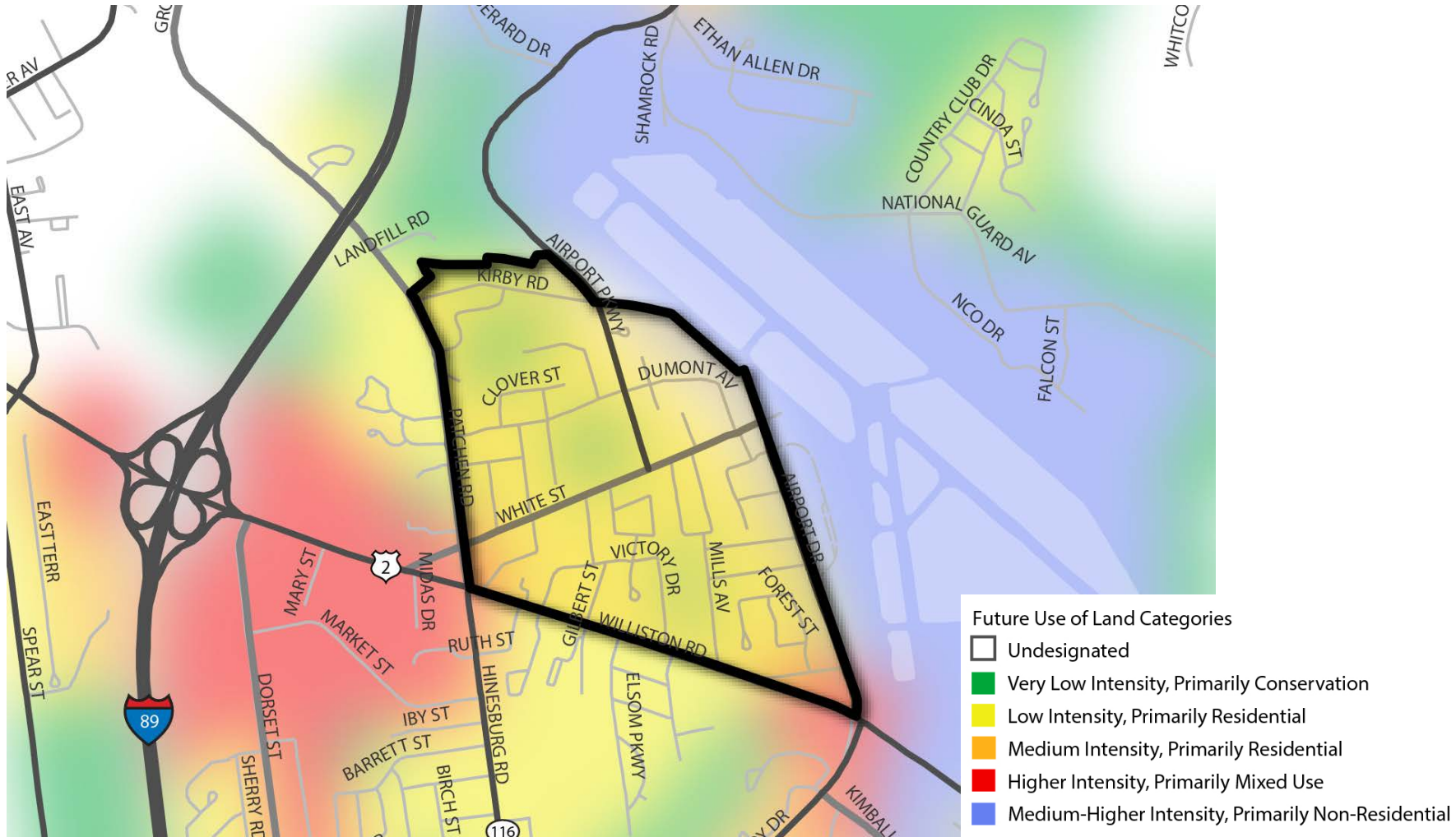
Existing Land Use



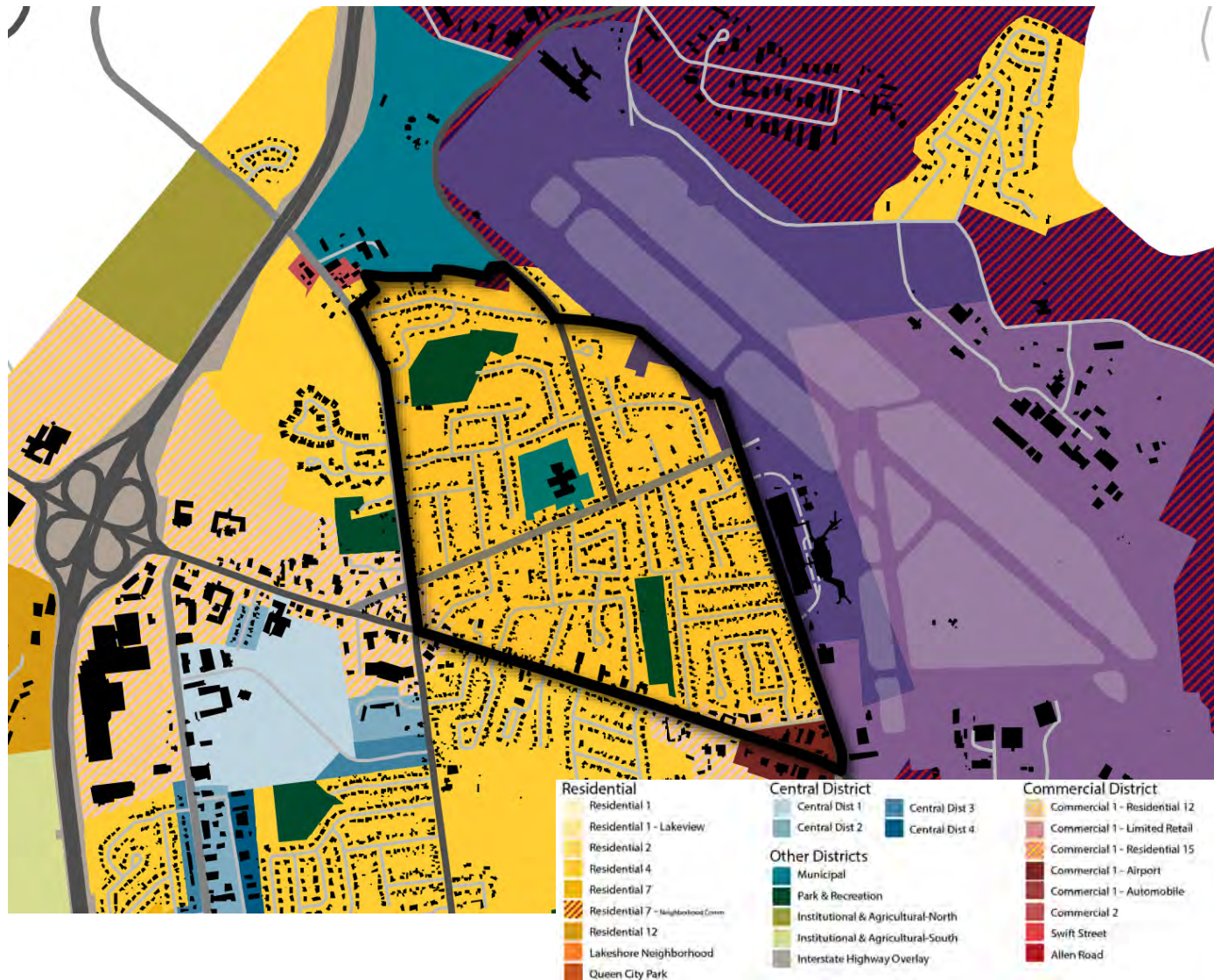
- Land Use**
- Commercial/Industrial
 - Condos/Apartments
 - Low Density Residential
 - Open Space/Farmland/Very Low Density Residential
 - Public/Institutional
 - Transportation/Utilities



Future Land Use (from Comprehensive Plan)



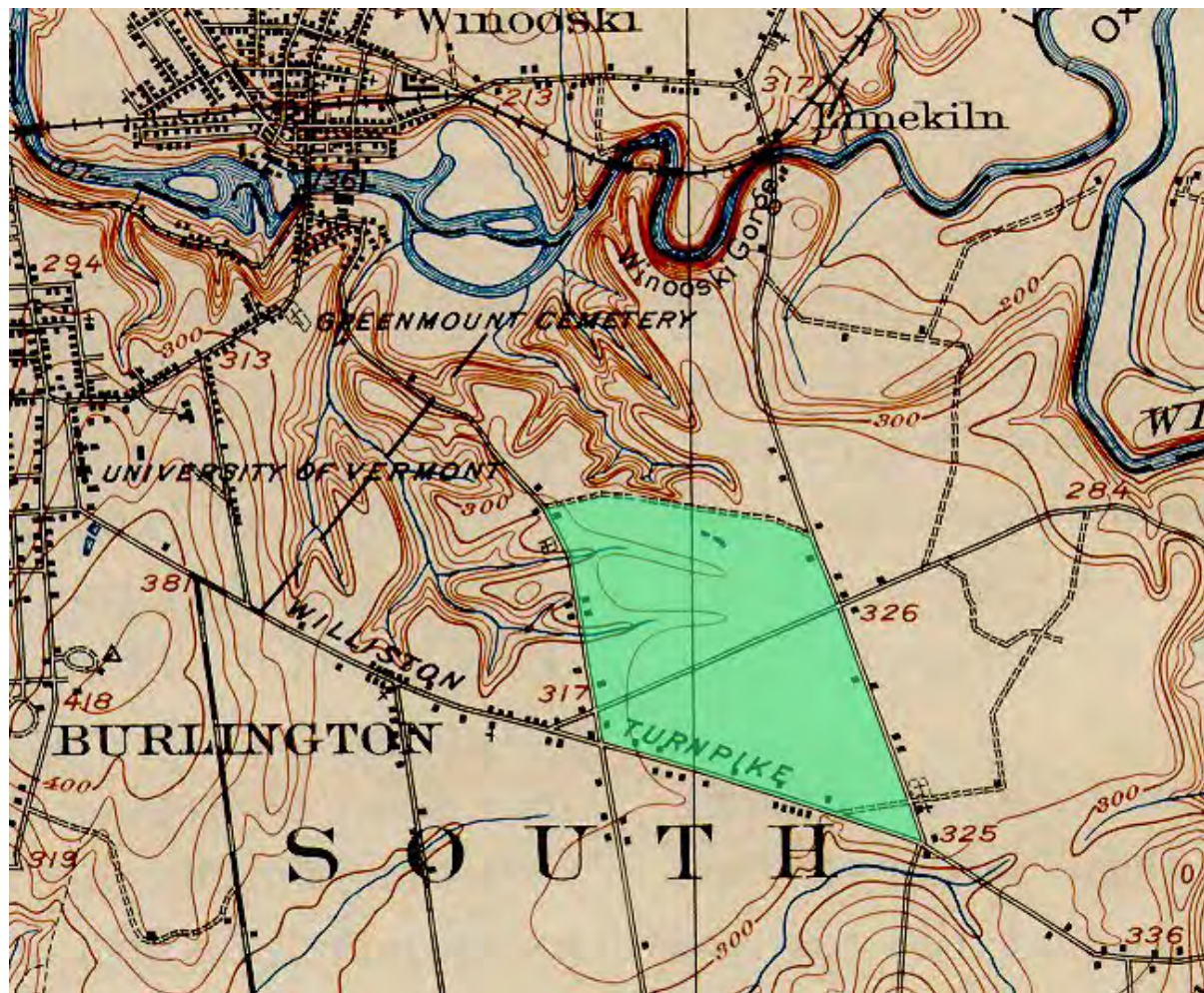
Existing Zoning



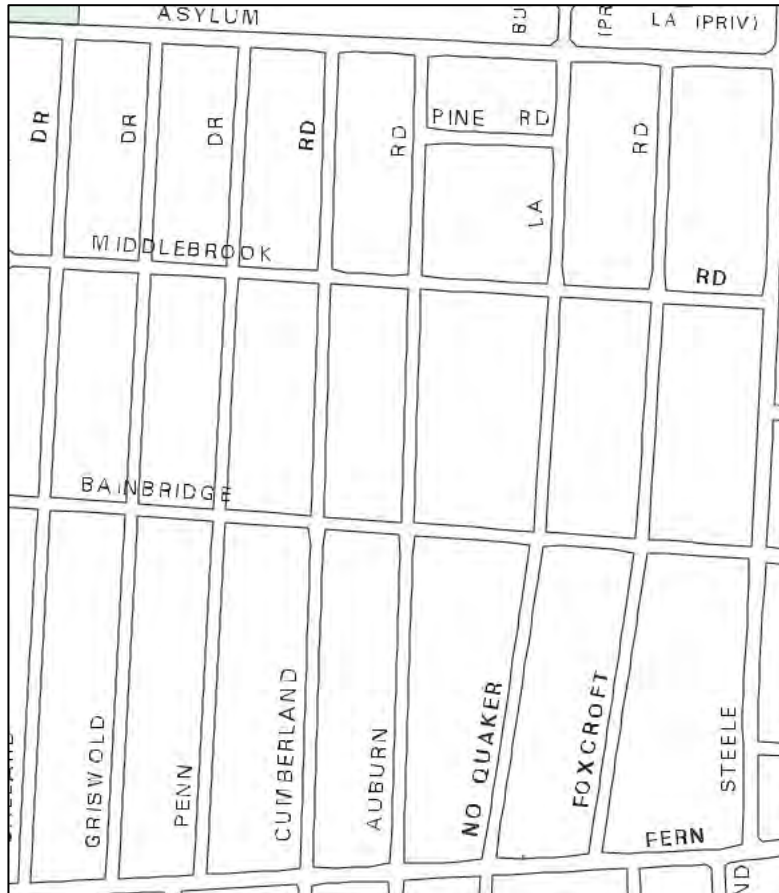
Historic Resources



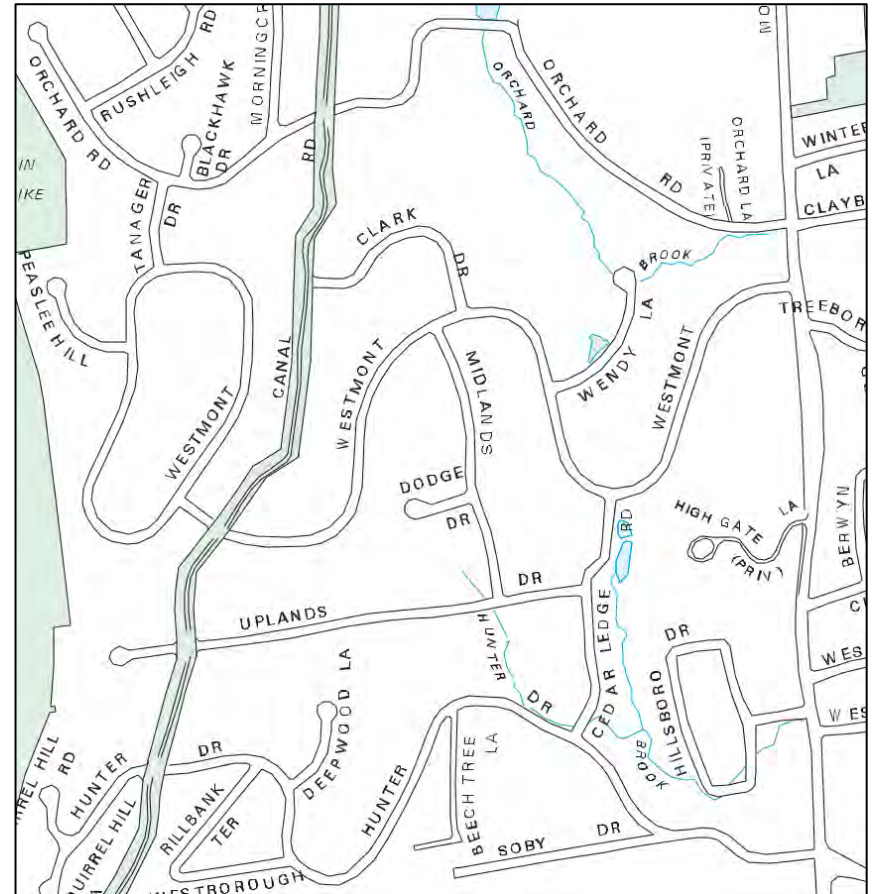
1906 USGS Map



Typical Street Layouts



Typical Grid



Organic Layout



Existing Development Pattern



Williston Road Parcelization



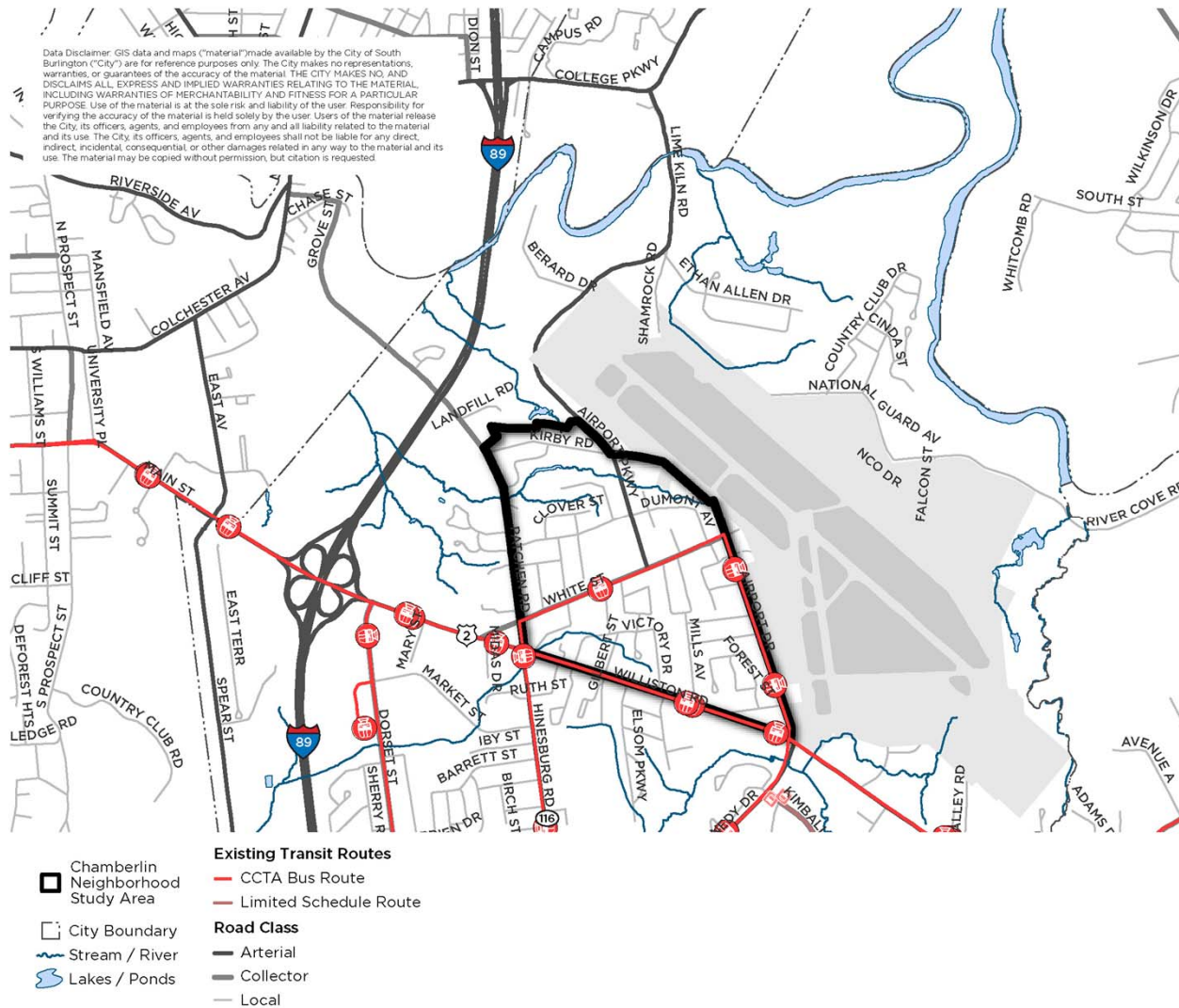
Consistent Setbacks, Buildings & Parcel Size



Sense of Closure

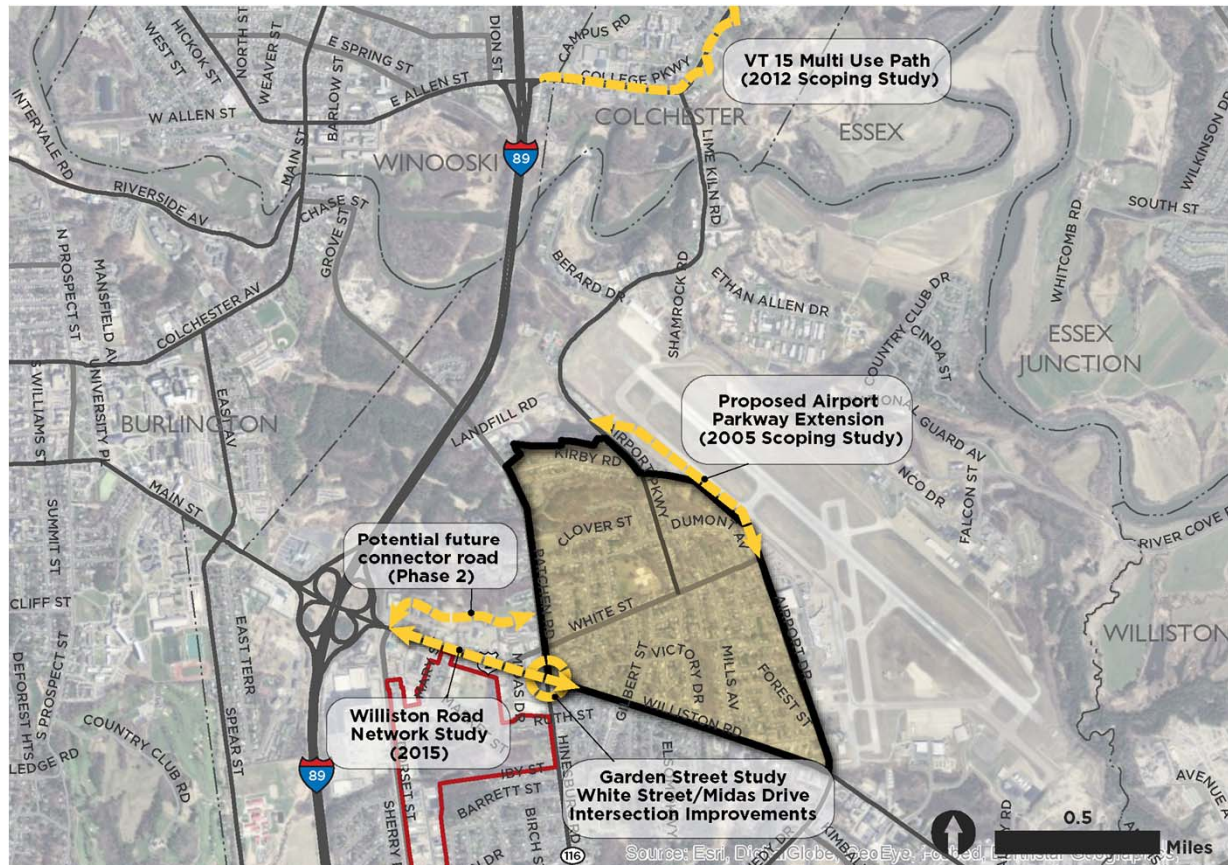


Road Class and Transit Routes



Sidewalks and Paths





Chamberlin Neighborhood Study Area

-  Chamber Neighborhood Study Area
  Proposed Transportation Improvements
-  Properties Purchased FY98 to FY12
-  City Center TIF District
- Town/City Boundaries

Airport Vision 2030



Burlington International Airport Vision 2030 Master Plan Update: Airport Layout Plan

- | | | |
|---|---|--|
| <ul style="list-style-type: none"> Chamberlin Neighborhood Study Area New Street Buffer Area | <ul style="list-style-type: none"> A: Future Exit 14-N Airport Parkway B: Future Landside/Airport Support Development C: Living Noise Wall (Location TBD) D: Future Rental Car Wash Facility E: Utilize Existing Stream Corridor Crossing F: Airport Maintenance Building | <ul style="list-style-type: none"> G: Future TSA Inspection Area H: Future Parking Facility I: New Hotel J: Existing Airport Parking K: New Hotel Parking L: Future Cell Phone Lot M: Future Parking Area N: Living Noise Wall (Location TBD) O: Future TSA Inspection Area P: Intersection Improvements Recommended |
|---|---|--|



Chamberlin Neighborhood Planning Project Break Out Groups

- **Goal is for you to discuss key questions, and for us to listen/record.**
- **Your input will be the building blocks for developing:**
 - The Vision and Goals,
 - The Future Scenarios, and
 - The Neighborhood Transportation-Land Use Plan.
- **Facilitators may not be able to answer every question – write it down so the Project Team may respond on the project website: <http://www.ccrpcvt.org/chamberlin>**



Chamberlin Neighborhood Planning Project

Key Questions

1. **What Are Your Positive Visions for Your Neighborhood?**
2. **What's In & Around Our Neighborhood:** What types of uses and amenities would you like to see in your neighborhood?
3. **Urban Form: Physical Character & Landmarks:** What are sightlines, landmarks, architectural characteristics, streetscape characteristics that are important to protect and/or create?
4. **Mobility In and Around the Neighborhood:** How can we be sure everyone can get where they want and need to go safely using all modes of transportation?
5. **Airport Master Plan:** Are there elements of the Airport's Master Plan that can benefit the Chamberlin neighborhood? Are there elements that are missing, that you'd like to see? What are the best ways for the neighborhood to interface with the Airport?



Outreach

		2015									2016		
Task/Deliverable		Apr	May	Jun	Jul	Aug	Sep	Oct	Nov	Dec	Jan	Feb	Mar
<div> <div></div> In-Process Task <div></div> Project Deliverable <div></div> CNAPC Meeting <div></div> Community Meeting <div></div> Project Team Meeting <div></div> Individual Stakeholder Outreach </div>	Project Website												
	CNAPC Meetings												
	Community Meetings												
	Project Team Meetings												
	Individual Stakeholder Meetings												
	Existing Conditions Assessment												
	Vision Statement and Goals, Future Scenarios												
	Future Scenario Evaluation Summary												
	Identification of a Preferred Alternative & Implementation Plan												
	Draft Final Report												
	Final Report												

- Project Website - <http://www.ccrpcvt.org/chamberlin>
- Community Meetings –
 - a. #1 May 27 Listening Session
 - b. #2 Vision and Future Scenarios
 - c. #3 Evaluation of Future Scenarios



Project Process, Schedule, and Outreach

Task/Deliverable	2015										2016		
	Apr	May	Jun	Jul	Aug	Sep	Oct	Nov	Dec	Jan	Feb	Mar	
Project Website													
Existing Conditions Assessment													
Vision Statement and Goals, Future Scenarios													
Future Scenario Evaluation Summary													
Identification of a Preferred Alternative & Implementation Plan													
Final Report													
Project Website													
CNAPC Meetings													
Community Meetings													
Project Team Meetings													
Individual Stakeholder Meetings													





Contacts

www.rsginc.com

Bob Chamberlin

Senior Director, RSG

rchamberlin@rsginc.com

802-861-0516

Lee Krohn

Senior Planner, CCRPC

lkrohn@ccrpcvt.org

802-733-7788

Paul Conner

Director of Planning and Zoning, City of South Burlington

pconner@sburl.com

802-846-4106