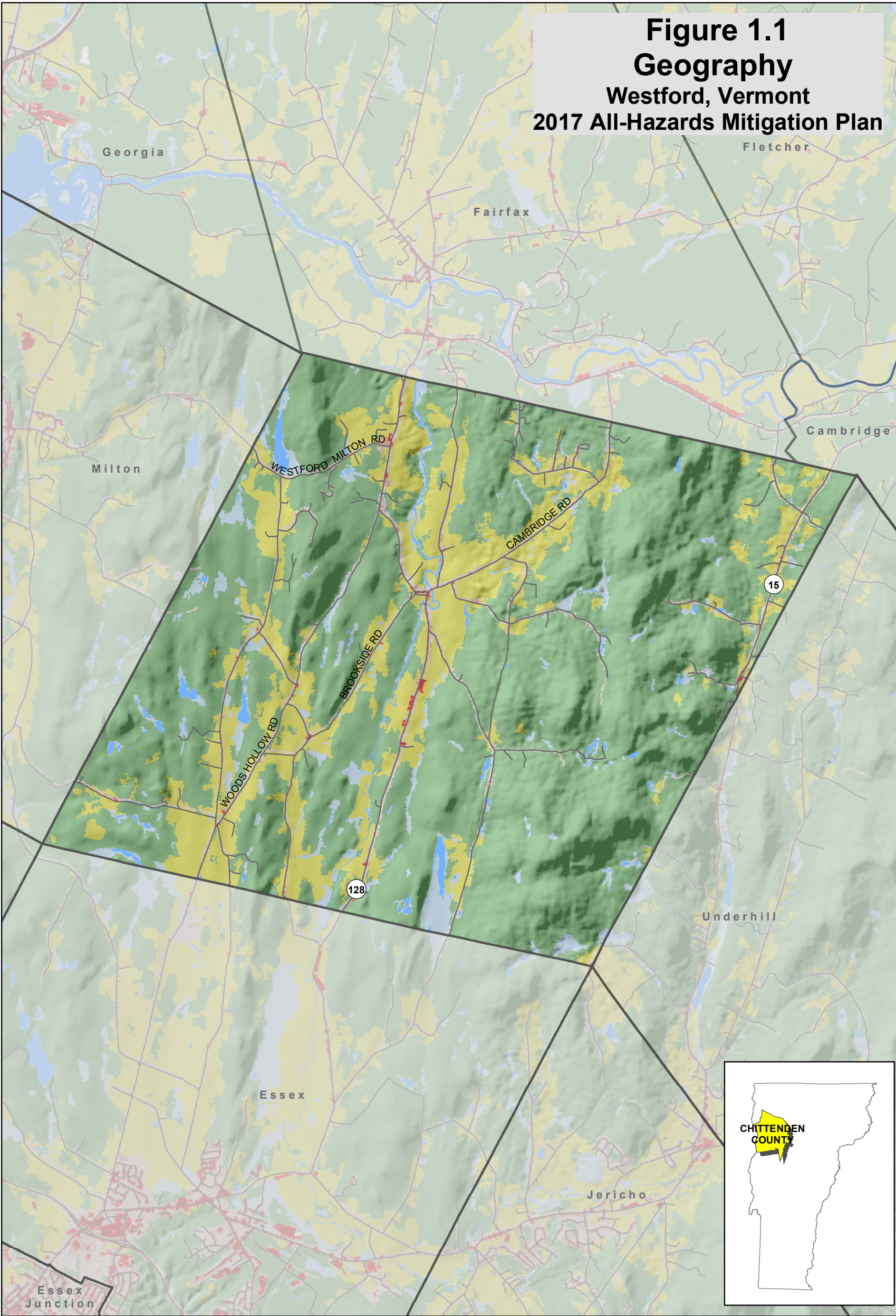


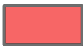



Figure 1.1
Geography
Westford, Vermont
2017 All-Hazards Mitigation Plan



Land Cover

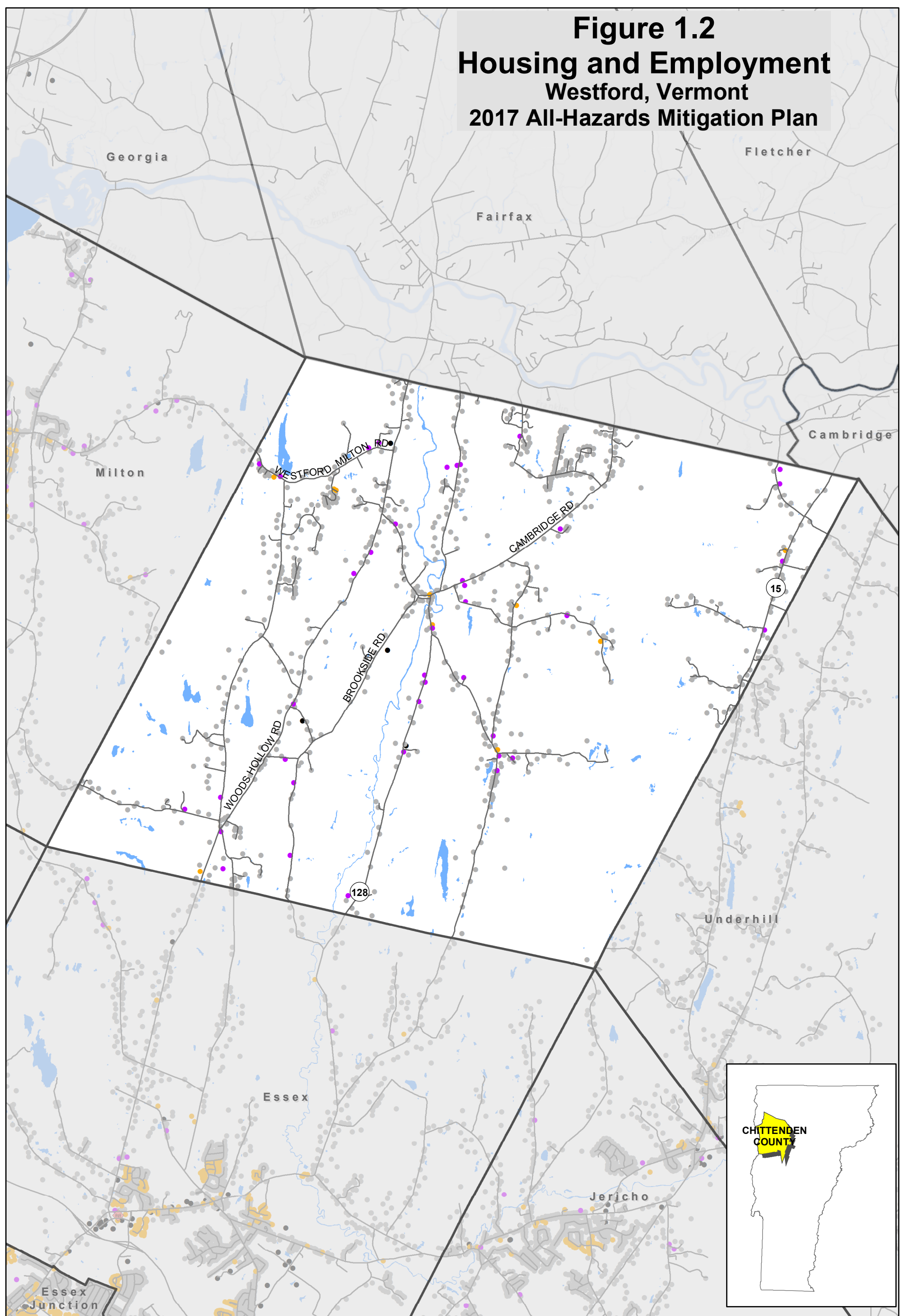
- | | | | |
|---|-----------------------------|---|---------------|
|  | Developed, Open Space |  | Barren Land |
|  | Developed, Low Intensity |  | Forest |
|  | Developed, Medium Intensity |  | Pasture/Crops |
|  | Developed, High Intensity |  | Wetlands |

DATA SOURCES:
Land Cover - NLCD, 2011
Hillshade - VCGI

0 0.5 1 2 Miles



Figure 1.2
Housing and Employment
Westford, Vermont
2017 All-Hazards Mitigation Plan



Housing

- Mobile Home
- Multi-family
- Single Family
- ◆ Congregate Housing*

● Employment Locations

*Congregate Housing includes:
Nursing Homes, Assisted Living
Residence, Therapeutic Community
Residence, and Level III Residential
Care Homes.

DATA SOURCES:
Mobile Home, Multi-family, Single-family- E911,2015
Employment Locations -CCRPC, 2013
Congregate Housing-VT Dept. Aging, Independent Living, 2015

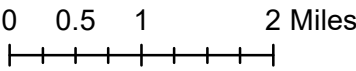
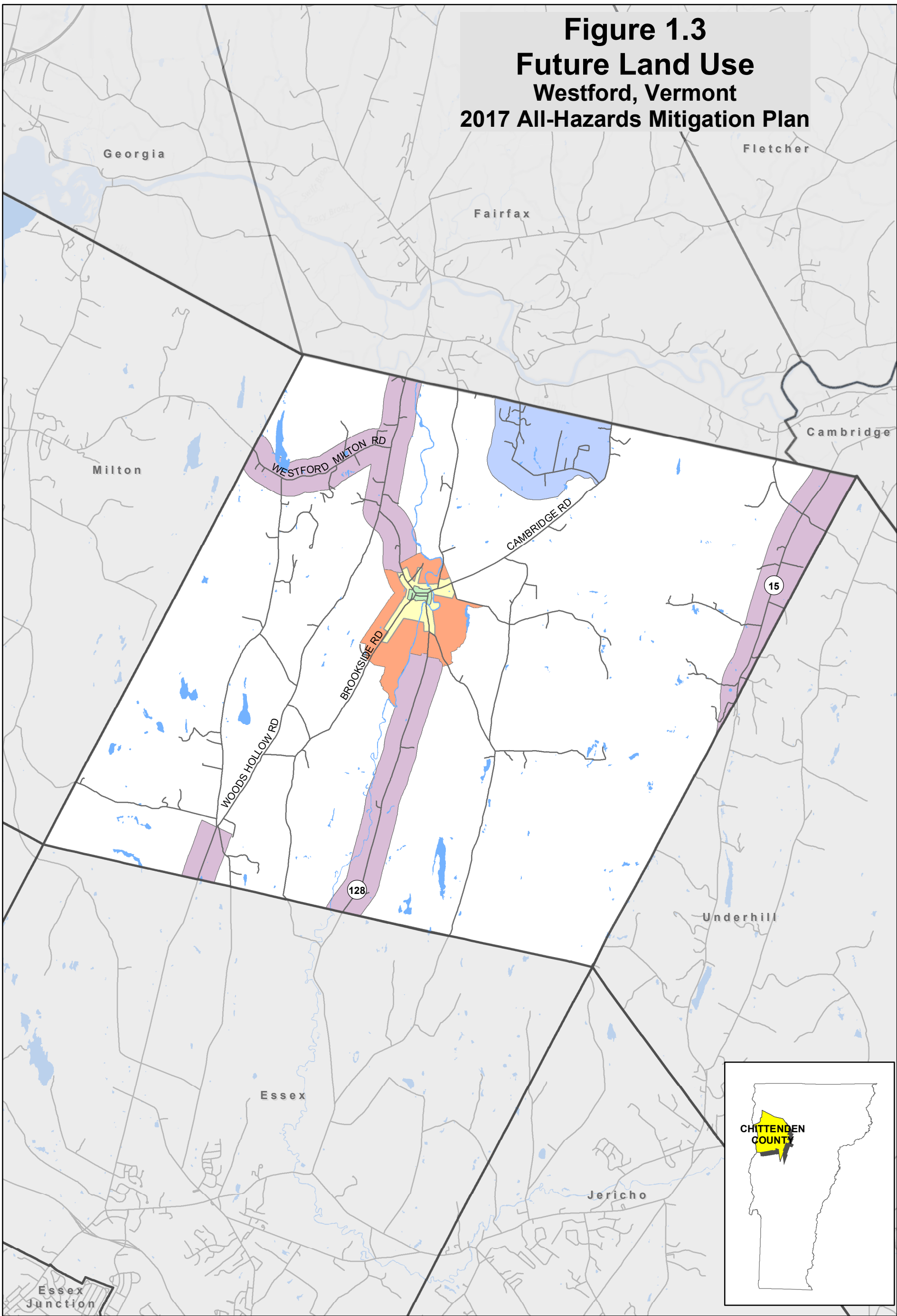


Figure 1.3
Future Land Use
Westford, Vermont
2017 All-Hazards Mitigation Plan



Zoning District

- Town Common
- Town Village
- Town Center

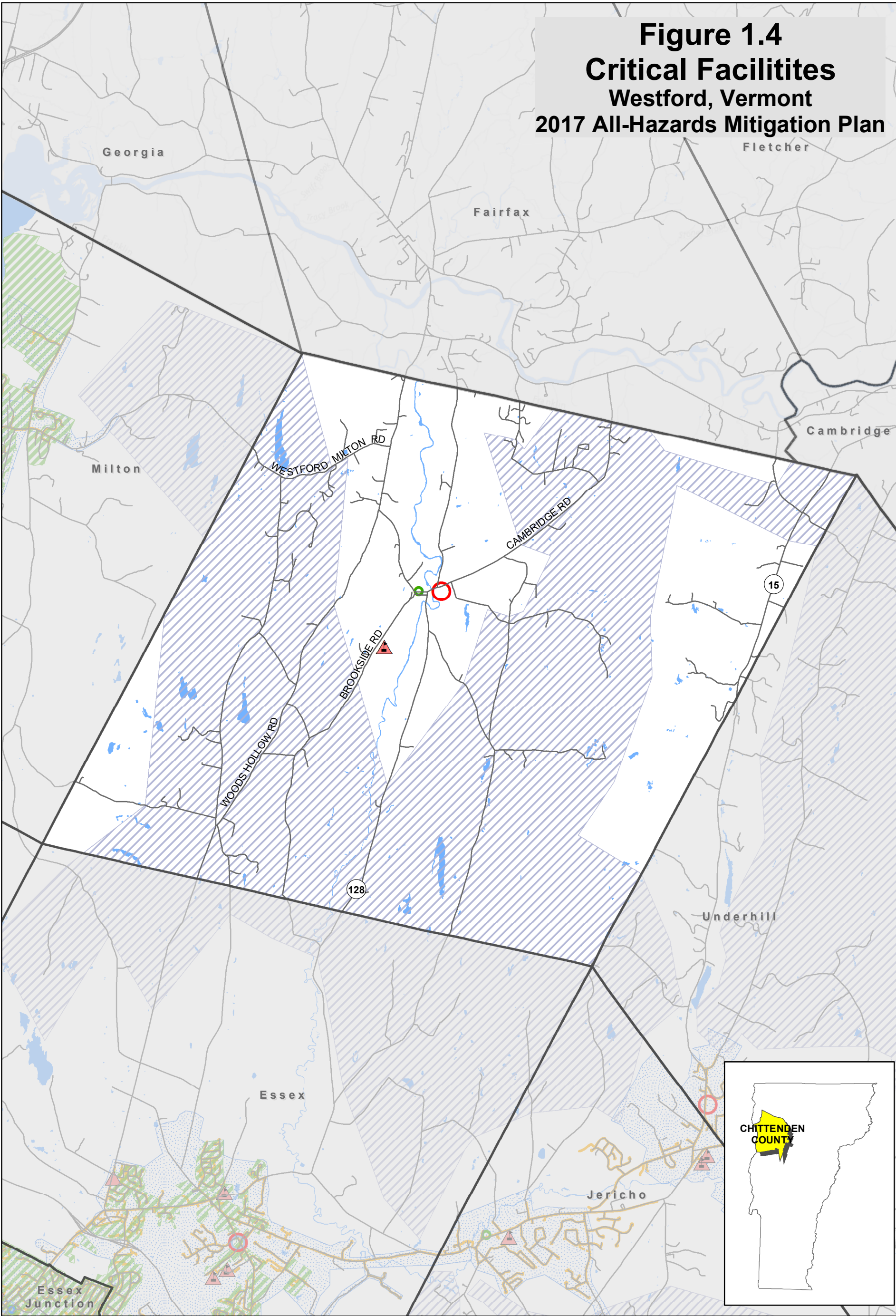
- Rural Residential
- Agricultural, Forestry & Residential I
- Agricultural, Forestry & Residential II

DATA SOURCES:
Zoning, 2008

0 0.5 1 2 Miles



Figure 1.4
Critical Facilities
Westford, Vermont
2017 All-Hazards Mitigation Plan



School	Fire	Electric Utility
College / University	Emergency Shelter	Burlington Electric Dept.
Law Enforcement	Water and Wastewater Treatment Facility	Green Mountain Power
Municipal Office	Vermont Gas Service Area	Vermont Electric Co-op
EMS	Sewer Service Area	
	Water Service Area	

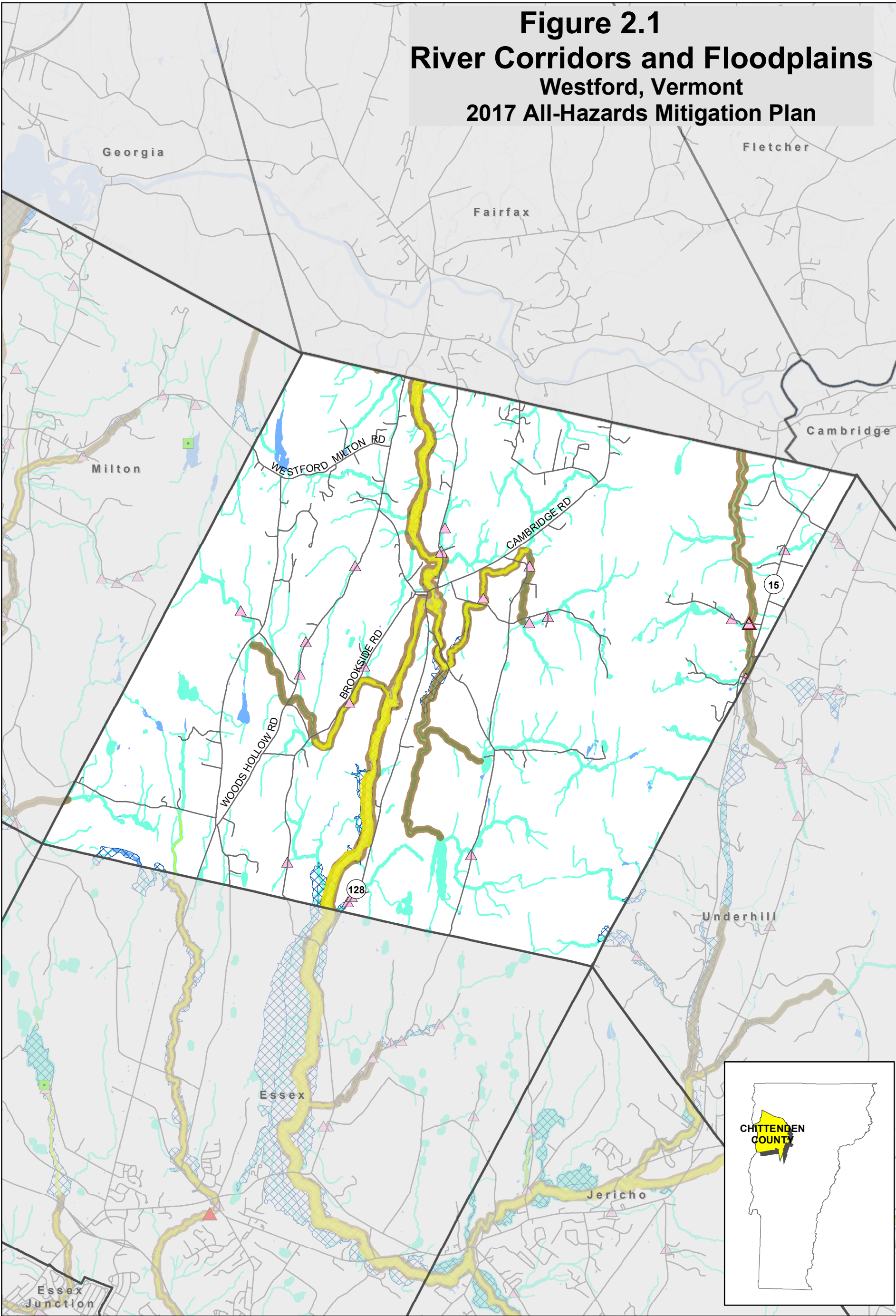
DATA SOURCES:
Schools, Law Enforcement, Municipal Office, EMS, Fire,
Wastewater Facility - Critical Facilities, 2014, CCRPC
Electric Utility Franchise Areas - VCGI
Vermont Gas data - VT Gas 2016
Water Service Area- CCRPC, 2016
Sewer Service Area-CCRPC, 2012

0 0.5 1 2 Miles

N

Document Path: D:\Projects\16\AHMP\Final_Towns\CriticalFacilities\CriticalFacilitiesPortrait_20161003.mxd

Figure 2.1
River Corridors and Floodplains
Westford, Vermont
2017 All-Hazards Mitigation Plan



National Inventory of Dams

DamStatus

- In Service
- Breached

Geomorphically Incompatible Culvert

Compatibi

- Mostly Incompatible*
- Fully Incompatible**

River Corridor Protection Area

ANR River Corridor - January 2015

Digital Flood Insurance Rate Map

- Special Flood Hazard Area (100 Year Floodplain)
- View individual Municipal Regs for detail

*Mostly incompatible 5<GC<10
% Bankfull Width + Approach Angle scores < 2 - Structure mostly incompatible with current form and process, with a moderate to high risk of structure failure. Re-design and replacement planning should be initiated to improve geomorphic compatibility.

**Fully incompatible 0<GC<5
% Bankfull Width + Approach Angle scores < 2 AND Sediment Continuity + Erosion and Armoring scores < 2 - Structure fully incompatible with channel and high risk of failure. Re-design and replacement should be performed as soon as possible to improve geomorphic compatibility.



DATA SOURCES:

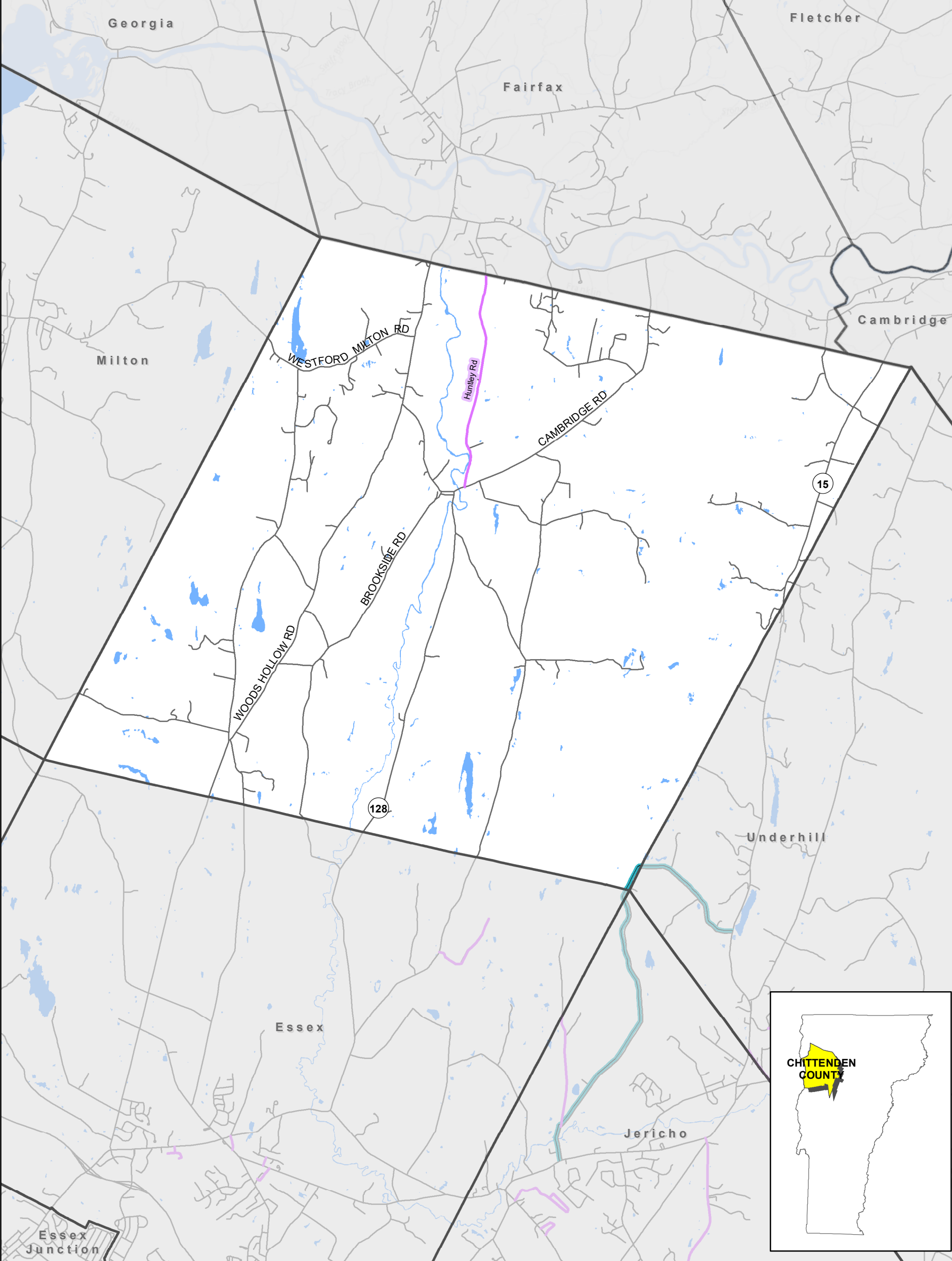
Dams data from US Army Corps of Engineers; Insufficient structures derived from ANR geomorphology inventories. River Corridor Protection Area equals a rivers meander belt (also known as Fluvial Erosion Hazard Area). River Corridor equals a rivers meander belt plus buffer extension. See Floodready.vermont.gov for more detail FEMA DFIRM - developed in 2011 by FEMA consultant Municipal Water Protection Buffers & Setbacks derived from municipal zoning regulations.

0 0.5 1 2 Miles








Document Path: D:\Projects\16\AHMP\Final_Towns\RiverCorridor\RiverCorridor\Portrail_20161003.mxd

Figure 3.1.1
FEMA Individual Assistance Locations
Westford, Vermont
2017 All-Hazards Mitigation Plan



Number of Claims

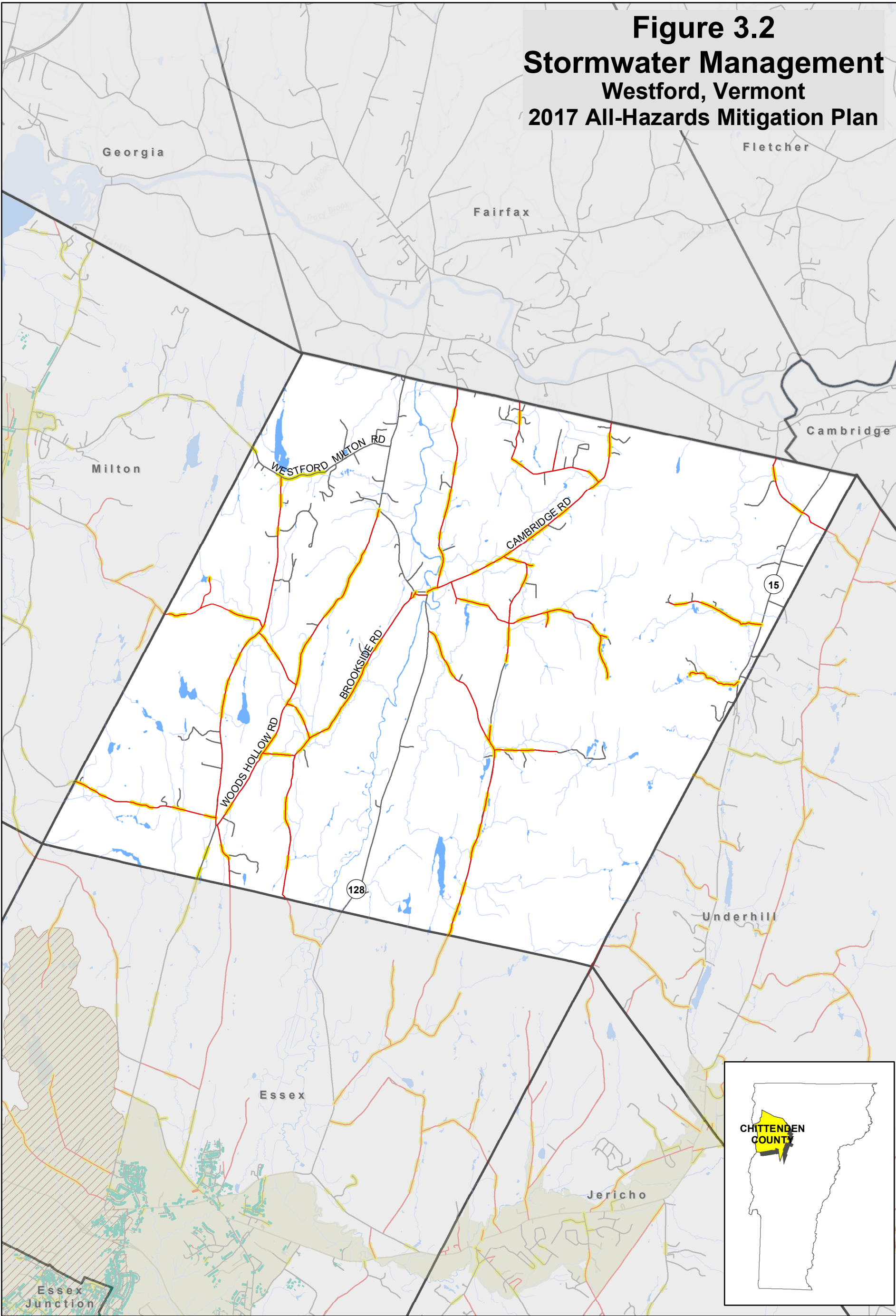
June 2011 Disaster	September 2011 Disaster
 1 - 2	 1 - 2
 3 - 4	 3 - 4
 5 - 6	

DATA SOURCES:
Individual Assistance Claims Locations-FEMA, 2015

0 0.5 1 2 Miles



Figure 3.2
Stormwater Management
Westford, Vermont
2017 All-Hazards Mitigation Plan



- | | |
|---|---|
|  Stormwater Pipe |  Stream Centerline |
|  Paved Road |  Stormwater Impaired Watershed |
|  Gravel or Class 4 Road | |
|  Hydrologically Connected Road Segment | |

DATA SOURCES:
Hydrologically Connected Roads - ANR, 2016
Paved, Gravel & Class 4 Roads - VTrans
MS4 area - ANR
Priority Surface Waters - 2014 List of Priority Surface Waters; ANR

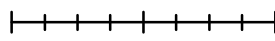
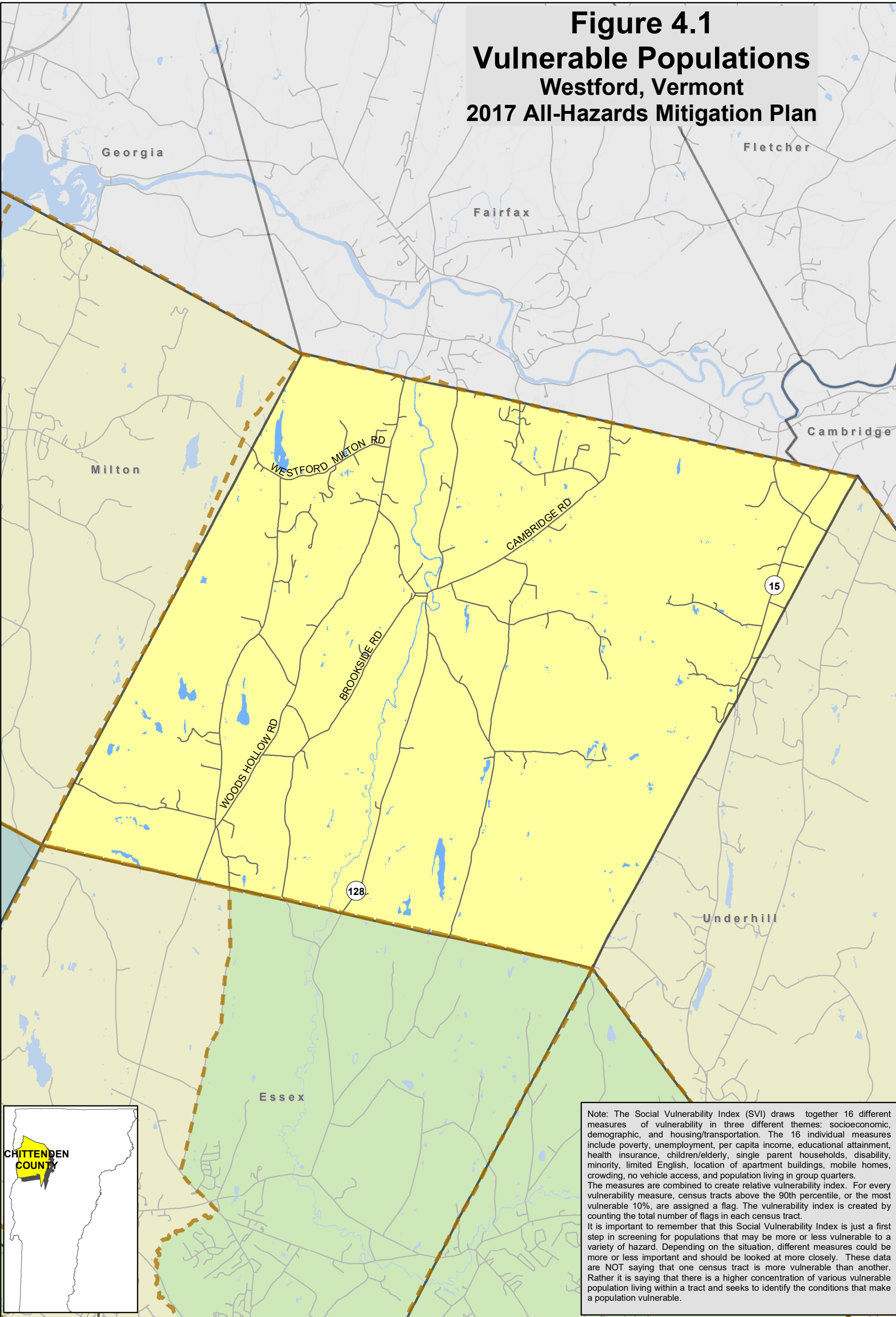
0 0.5 1 2 Miles




Figure 4.1
Vulnerable Populations
Westford, Vermont
2017 All-Hazards Mitigation Plan



Social Vulnerability Index

Score by Census Tract

0	1	2	3	4 - 5	6 - 10
---	---	---	---	-------	--------

Census Tract Boundary**

**Westford, Underhill, and Bolton are contained within one census tract. St. George and Hinesburg share the same census tract boundary. Huntington and Buels Gore also consist of one tract. All the other municipalities are broken down by one or more tracts. More urban communities have many more tracts as the optimal population for tract is 4,000 people. The minimum population threshold is 1,200 and the maximum is 8,000.

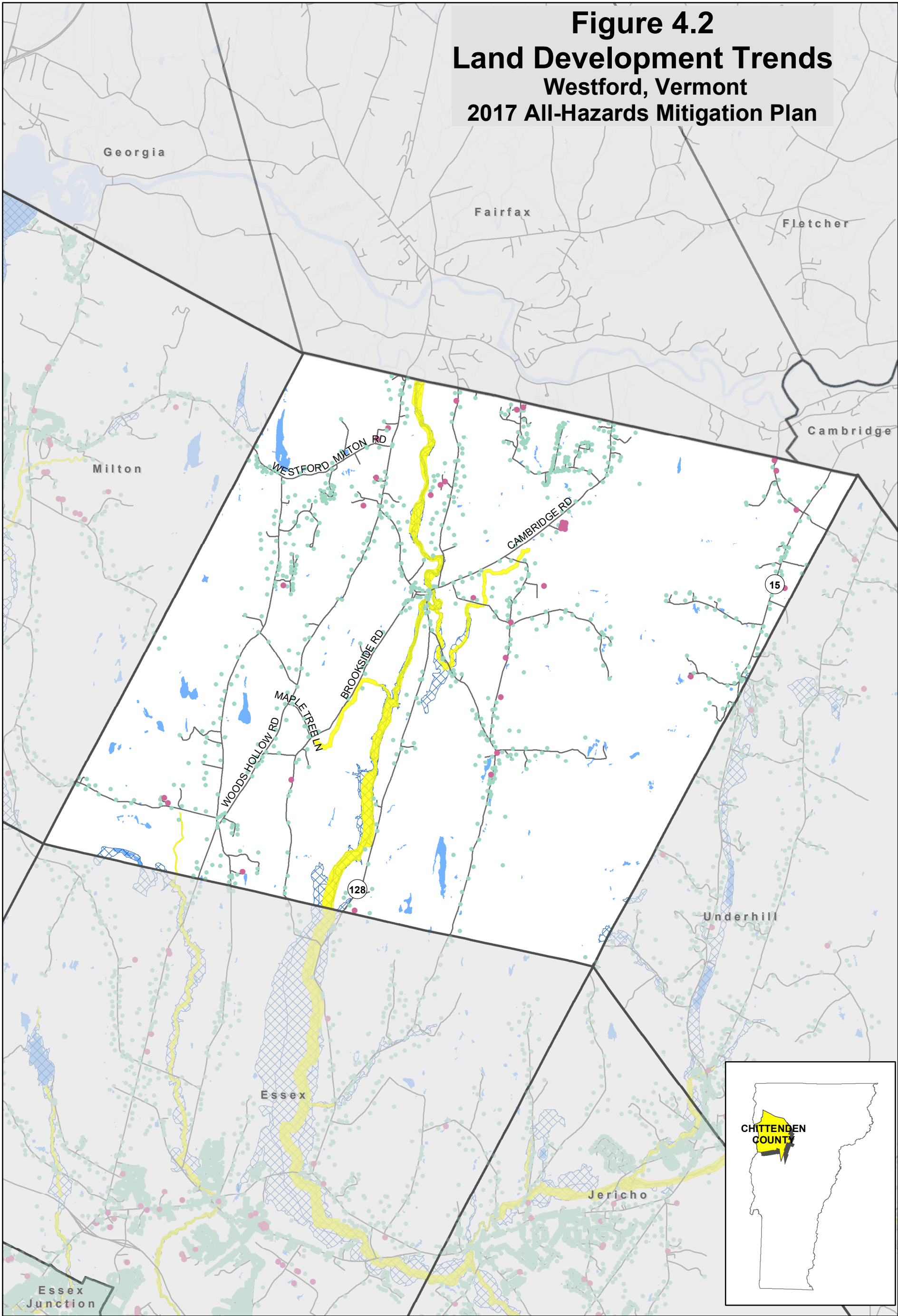
DATA SOURCES:
Social Vulnerability Index, VDH, 2015
Census Tracts, US Census

0 0.5 1 2 Miles

CHITTENDEN COUNTY RPC
Communities Planning Together

Document Path: D:\Projects\16\AHMP\Final_Towns\VulnerablePopulation\VulnerablePopPortrait_20160930.mxd

Figure 4.2
Land Development Trends
 Westford, Vermont
 2017 All-Hazards Mitigation Plan



Year Built for Residential and Non-residential Development

- Built 2010 or earlier
- Built 2011-2014
- ▨ Special Flood Hazard Area (100 Year Floodplain)
- River Corridor Protection Area (FEH)

DATA SOURCES:
 Housing Units - CCRPC, 2014
 CI Data-CCRPC, 2014
 Special Flood Hazard Area - developed in 2011 by FEMA
 River Corridor equals a rivers meander belt plus buffer extension.
 See Floodready.vermont.gov for more detail

0 0.5 1 2 Miles

