

# Update

Chittenden County Regional Planning Commission  
February 2013 Volume 2 Number 1

### Welcome to the Second Edition

Welcome to the second edition of the *CIRC Alternatives Task Force Update* newsletter. The Task Force has been busy – 10 meetings over eighteen months with \$26 million in projects and studies underway.

At the January 2013 Task Force meeting, a series of twelve planning studies for Phase III (FY 2014) were approved and are now underway. Many of these studies are a direct result of the work completed for the Williston–Essex Transportation Network Study (WENTS) and are outlined in this edition of the *Update*.

In this issue, we bring you up-to-date with all three phases of ongoing planning studies and the implementation projects approved to date.

As always, we welcome your comments and input.

**Brian Searles**  
Vermont Secretary of  
Transportation

**Michele Boomhower**  
Metropolitan Planning Organization (MPO)  
Director, CCRPC, [mboomhower@ccrpcvt.org](mailto:mboomhower@ccrpcvt.org)  
846-4490 x15

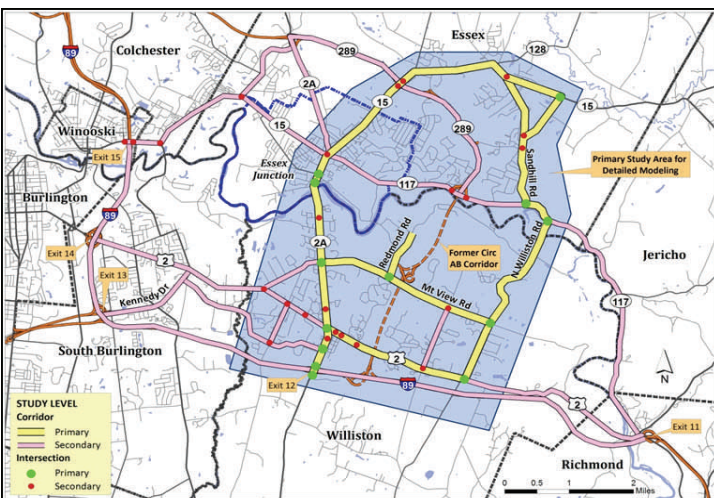
## Planning Studies

### Williston-Essex Network Transportation Study (WENTS)

The Williston-Essex Network Transportation Study (WENTS) **Steering Committee**, at their January meeting, endorsed a comprehensive multimodal strategy package developed to address congestion, safety, modal connectivity, access to employment centers, and other issues in the study area. **The endorsed strategy package includes:**

- A reconfigured Interstate 89 Exit 12 interchange including new local road connections and VT 2A corridor improvements north of the exit
- Capacity improvements at the VT 2A/Industrial Avenue/Mountain View Drive intersection and the VT 2A corridor north of the intersection
- Upgrades to North Williston Road and Intersections on VT 15
- New bike and pedestrian facilities to close existing gaps and create a continuous network in the study area
- Upgrades to existing facilities to provide for safe bike and pedestrian travel
- New transit services
- Transportation Demand and System Management improvements

The estimated cost for roadway capacity improvements is \$30-49 million and for bike and pedestrian improvements is \$15-17 million.



Williston-Essex Network Transportation Study (WENTS) Area

The **CIRC Alternatives Task Force**, at their January 31<sup>st</sup> meeting, endorsed a series of scoping studies, to begin in February 2013, that support the WENTS Steering Committee's strategy package and recommendations. **These studies include:**

- Exit 12 reconfiguration
- VT 2A/Industrial Ave/Mountain View Drive intersection and VT 2A improvements
- VT 117/North Williston Road intersection improvements and North Williston Road flooding solutions
- US 2 from Taft Corners to Williston Village multimodal improvements

Bike/pedestrian and Park & Ride scoping studies endorsed by the CIRC Alternatives Task Force, to begin in 2013, include:

- Industrial Avenue to Blair Park (including a crossing of Allen Brook)
- Mountain View Road from Old Stage Road to VT 2A
- VT 15 from Old Stage Road to Essex Way
- VT 117/VT 289 Park & Ride

The WENTS is wrapping up, with an implementation plan and final report expected in early spring. For more information, see: <http://www.ccrpcvt.org/corridors/williston-essex-network-transportation-study/>

**CIRC Alternatives Task Force  
Public Meeting #2  
Thursday, February 21st, 7:00–9:00 PM  
Williston Town Hall, 7900 Williston Road**

Please join us for an update about the projects which are underway, the projects under consideration, the projects moving into planning, and next steps for the Task Force.

## Upcoming Phase II and Phase III Planning Studies

Town	Study	Study Purpose	Est. Cost
Essex	North Williston Road Flood Plain Elevation and North Williston Road/VT 117 Intersection Improvements	1) Study to raise the Essex side of N. Williston Road to keep the road open 24/7 during flood events 2) Study intersection improvements at VT 117/North Williston Road for added turning/bypass lanes and potential signalization.	\$55,000
Colchester/ Essex	Colchester-Essex Network Transp. Study including Scoping of Kellogg/Susie Wilson and VT 15/Susie Wilson	VT 2A and Severance Rd. are the major east-west connections in Colchester. VT 2A is Colchester's historic village. Evaluate the east-west flow of traffic in Colchester.	\$100,000
Colchester	Exit 17/US 7/US 2 Interchange Circulation Analysis/Scoping Study	Recent increases in congestion on interchange ramps and approaches indicate that improvements need to be made at this location to continue to support safety, mobility, and economic development.	\$60,000
Regional Transit	VT15 Commuter Park and Ride Lots	Evaluate construction of park and ride lots in Essex, Jericho, Underhill, Cambridge, and Jeffersonville.	\$30,000
Williston	Scoping Study - Williston Grid Streets and Exit 12 Improvements	Evaluate potential reconfigurations of Exit 12 to provide additional traffic mitigation; address safety issues; improve bike/ped access north and south of I-89; potential new connecting roads from VT 2A to Harvest Lane and Maple Tree Place.	\$250,000
Williston	Scoping Study - VT 2A/ Industrial Avenue/Mountain View Improvements and VT 2A to James Brown Drive	Address significant congestion issues at this intersection/corridor, consider bike/ped mobility in the area proximate to the intersection and connections to existing/proposed facilities along VT 2A/Mountain View Road.	\$55,000
Williston	Multimodal Scoping Study - Williston Village to Taft Corners	Evaluate bike/ped connections along/parallel to US 2 connecting existing paths; removal/rehab of eastbound US 2 climbing lane; provision of transit access; other bike/ped safety improvements.	\$50,000
Williston	Multimodal Scoping Study - Core Bike/Ped Improvements	Evaluate bike/ped connections along/parallel existing roadway connecting existing paths as applicable; provision of transit access as applicable; other bike/ped safety improvements.	\$40,000
Williston	Multimodal Scoping Study - Mountain View Road, Old Stage to VT 2A	Evaluate bike/ped connections along/parallel existing roadway connecting existing paths as applicable; provision of transit access as applicable; other bike/ped safety improvements.	\$30,000
Williston	Multimodal Scoping Study - VT 2A Industrial Avenue to Blair Park	Evaluate bike/ped connections along/parallel existing roadway connecting existing paths as applicable; provision of transit access as applicable; other bike/ped safety improvements.	\$40,000
Essex	Multimodal Scoping Study - VT 15, Old Stage Road to Essex Way	Evaluate bike/ped connections along/parallel existing roadway connecting existing paths as applicable; provision of transit access as applicable; other bike/ped safety improvements.	\$10,000
Essex	VT 117/VT 289 Park and Ride Lot	Reduce congestion by providing a well-sited, large park and ride lot to serve direct bus service to Burlington. Provide increased capacity, mobility, safety, and connectivity.	\$5,000

## Planning Studies

### Outcomes of Initial Phase II Planning Studies

#### 1. VT 15 Multiuse Path, Essex Junction/Essex/Colchester.

Construction of Phase II of a VT 15 multiuse path between Lime Kiln Road in Colchester and Susie Wilson Road in Essex consisting of a south side path from Lime Kiln Road to National Guard Road and north side path from National Guard Road to Susie Wilson Road with pedestrian crossings at National Guard Road and Susie Wilson Road.

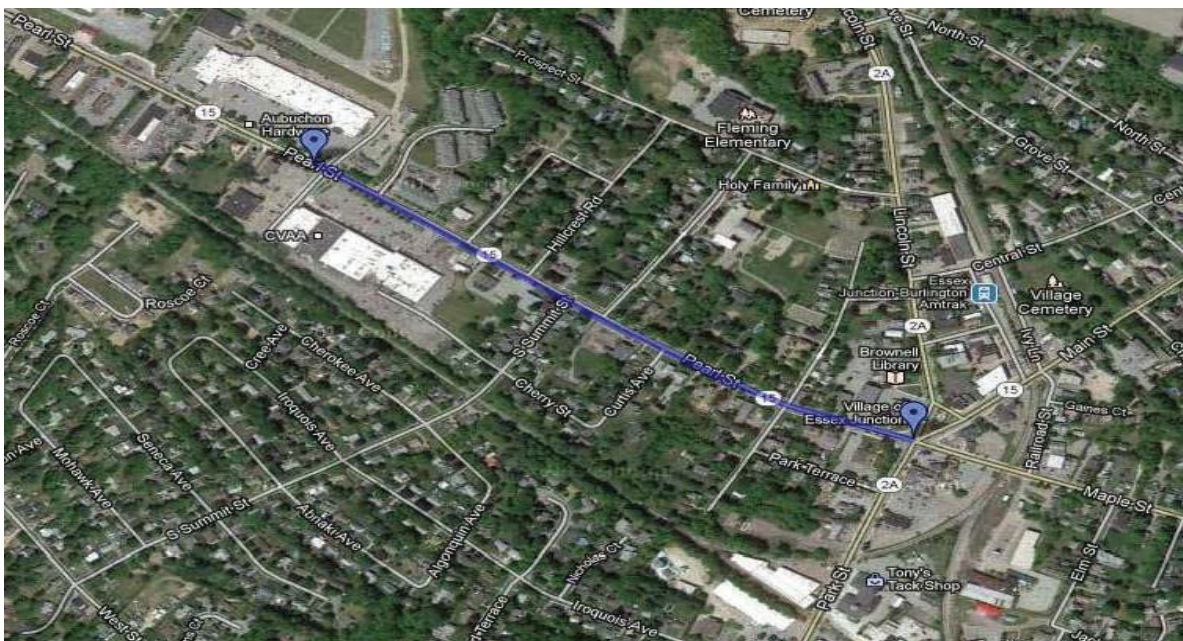
#### 2. Pearl Street/Post Office Square Intersection Improvements/Post Office Square to Five Corners Streetscape and Bike Improvements, Essex Junction.

Construction of bicycle shoulders on VT 15, sidewalk upgrade, and intersection upgrades at Post Office Square.

#### 3. Williston–Essex Transportation Network Study (See page 2).

#### 4. Prim Road/West Lakeshore Drive and Laker Lane/Mallets Bay Avenue Improvements, Colchester.

A presentation of alternatives was presented to the Colchester Selectboard on November 13, 2012. The project committee recommended adding a right turn lane eastbound and a left turn lane westbound at the Blakely Road/Laker Lane intersection. For the Prim Road/West Lakeshore Drive intersection, recommended improvements include: realignment of the intersection to make VT 127 the through-movement; signalize the intersection, add an eastbound left turn lane; add a westbound right turn lane; accommodate future shared-use path/sidewalks; and add crosswalks and pedestrian signals. For more information, see: <http://www.ccrpcvt.org/corridors/circ-alternatives-task-force/circ-selected-projects/vt-127-intersections/>



Map of Pearl Street/Post Office Square Intersection Improvements and Post Office Square to Five Corners Streetscape and Bike Improvements

## Implementation Projects

### Phase I Projects for FY 2013

There are four projects underway in Phase I. VTrans provided the following updates:

#### **Crescent Street Connector, Essex Junction.**

Conceptual plans for the Crescent Street Connector are under review at VTrans with a draft conceptual alignment available soon. Work continues on the Environmental Assessment as well as the agreement with the railroad.

#### **VT 2A/VT 289/Susie Wilson Road Project, Essex.**

The signal upgrades have been completed with visible improvement to traffic flow through the area. The adaptive signal control has not yet been activated, but should be operational in late February.

**US 7/Exit 16 Project, Colchester.** Right-of-way plans are expected to be complete in March. The design team has almost completed meetings with property owners.

#### **VT 2A/James Brown Drive Project, Williston.**

A 502 public hearing was held in late January to explain the conceptual plans to the public, especially the affected property owners, and to give the public an opportunity to voice their concerns at this early stage in the project development process. Nine members of the public attended this hearing. The design consultant, Green International Affiliates, Inc., is beginning work on preliminary plan development.

#### **CCTA Announces Meetings on Proposed Jeffersonville-Burlington Commuter Bus Route**

The proposed Jeffersonville-Burlington Commuter route would serve Jeffersonville, Cambridge, Underhill, and Jericho as it heads into Burlington during morning and evening peak commuting hours. Attend one of the two public meetings to learn more about recent developments and the remaining steps to secure funding and complete the route implementation:

- Jericho/Underhill: **Feb. 19th at 6:30 PM at the Underhill Town Hall**
- Cambridge/Jeffersonville: **Feb. 27th at 6:30 PM at the Cambridge Elementary School Gym (Jeffersonville)**

Questions? [info@cctaride.org](mailto:info@cctaride.org) or 864-CCTA.

### Phase II Projects for FY 2014

These projects are included in the VTrans FY 2014 Capital Program for Legislative consideration:

#### **Severance Corners Improvements, Colchester.**

Upgrades to US 7/Blakely Road/Severance Road to accommodate the Severance Corners Growth Center, including an additional westbound left turn lane, an additional northbound left turn lane and an additional southbound through lane.

#### **VT15/Sand Hill Road Intersection, Essex.**

Reconfigure the VT 15/Sand Hill Road intersection to eliminate the "Y." Also, install a traffic signal, a protected pedestrian crossing of VT 15, and right turn lane on the west approach.

**VT15 Improvements from Post Office Square to Five Corners, Essex Junction.** (See page 4)

**VT15 Multiuse Path in Winooski, Colchester, Essex, and Essex Junction.** (See page 4)

**US2/Trader Lane, Williston.** Install traffic signal.

#### **Transportation Demand Management (TDM), Region-wide:**

1. **Adaptive Signal Control (ACS)** for VT 2A Williston (Exit 12 to James Brown Dr.) and VT 15 Essex (VT 15/VT 289 to VT 15/VT 127). This technology increases efficiency and maximizes roadway capacity by interconnecting signal timing to accommodate changing traffic patterns. ASC distributes green light time equitably for all traffic movements; improves traffic progression through green lights; and enhances overall effectiveness of traffic signal timing.

2. **Go! Chittenden County.** Program partners (CCRPC, VEIC, CCTA, CarShare Vermont, Local Motion, Campus Area Transportation Management Association, VT Department of Health, and Go! Vermont) encourage commuters and employers to embrace alternative modes of transportation.

3. **CCTA VT 15 Commuter Service and Williston Mid-Day Service.** The first year of a three year funding program has been requested for a new Jeffersonville to Burlington commuter route (see box left) and additional mid-day service to Williston.

## History of the CIRC Alternatives Task Force

Since Governor Shumlin's 2011 announcement that the Chittenden County Circumferential Highway - as originally conceived - would not be built, the Chittenden County Regional Planning Commission (CCRPC) has coordinated a process to identify projects and planning activities to implement the purpose and need that the Circ highway was originally intended to address.

The CCRPC, in collaboration with VTrans, convened the **CIRC Alternatives Task Force**, consisting of twenty-three representatives, to identify a list of immediate, mid-term, and long-term recommendations for planning and implementation projects to address mobility, congestion, transportation demand, safety, livability, and economic development in the region.

The Task Force met ten times between July 2011 and January 2013. The first issue of this **Update** described the first package of planning studies and implementation projects.

During the 2012 Legislative session, five projects were approved by the Legislature for implementation. This session, the Legislature will consider adding six additional projects. Also, the Task Force has approved advancing detailed planning studies for twelve projects which will be considered for advancement to the Legislature later this year.

### Questions about the Task Force?

For questions about the overall process, contact: Michele Boomhower, CCRPC, 846-4490 x15, [mboomhower@ccrpcvt.org](mailto:mboomhower@ccrpcvt.org).

For public information or to be added to the mailing list, contact: Diane Meyerhoff, Third Sector Associates, 865-1794, [diane@thirdsectorassociates.com](mailto:diane@thirdsectorassociates.com).

[www.circtaskforce.org](http://www.circtaskforce.org)

## CIRC Alternatives Task Force Members

### Williston

**Terry Macaig**, Selectboard Chair

**Rick McGuire**, Town Manager

**Chris Roy**, Primary RPC Representative

**Staff:** Ken Belliveau, Bruce Hoar

### Essex

**Linda Myers**, Selectboard Chair

**Pat Scheidel**, Town Manager

**Jeff Carr**, Primary RPC Representative

**Staff:** Trevor Lashua, Dennis Lutz

### Essex Junction

**George Tyler**, Village President

**Robin Pierce**, Development Director

**Daniel Kerin**, Primary RPC Representative

### Colchester

**Richard Paquette**, Selectboard Chair

**Al Voegele**, Town Manager

**Marc Landry**, Primary RPC Representative

**Staff:** Bryan Osborne

### Vermont Agency of Transportation (VTrans)

**Brian Searles**, Secretary

**Staff:** Amy Bell, Ken Robie

### Federal Highway Administration (FHWA)

**Technical Advisor:** Chris Jolly

### Other Primary Regional Transportation Partners

**Meredith Birkett**, CCTA Director of Planning & Marketing

**Chapin Spencer**, Local Motion Executive Director

**Staff:** Jason Van Driesche, Local Motion

### Business Community

**Tim Baechle**, IBM

**Jeff Nick**, Business Community Liaison

**Dawn Francis/Curt Carter**, Lake Champlain Regional Chamber of Commerce/Greater Burlington Industrial Corporation (GBIC)

### Environmental Community

**Paul Bruhn**, Preservation Trust of Vermont

**Brian Shupe**, Vermont Natural Resources Council (VNRC)

**Chris Kilian**, Conservation Law Foundation (CLF)

**Staff:** Sandy Levine, CLF; Kate McCarthy, VNRC

### State Agencies

**Secretary Deb Markowitz**, VT Agency of Natural Resources

**Commissioner David Mears**, VT Department of Environmental Conservation