



the science of insight



## Essex Junction Train Station Access and Scoping Study

Village of Essex Junction  
Chittenden County Regional Planning Commission  
RSG, Inc.  
Scott & Partners Architectural Planning

April 2, 2015

# Essex Junction Train Station Access and Circulation Scoping Study

Introduction – Robin Pierce, Village of Essex Junction

Project Objective, Goals of Tonight's Meeting—Christine Forde, Chittenden County RPC

Scoping Process, Review of Project Area—Bob Chamberlin, RSG

Concepts Developed to Date—John Alden, Architect

Local Concerns – Problems and Opportunities--Discussion

Next Steps—Bob Chamberlin, RSG

# Essex Train Station Access and Scoping Study - Project Objective

To develop and evaluate upgrades to the train station building and the adjacent areas to:

- accommodate the existing station uses,
- provide a safe and functional waiting area for train and bus riders,
- improve traffic circulation in the surrounding area, and
- improve the aesthetics of the area.

This project follows a 2012 Village initiative to develop a schematic Plan and perspective of a possible new station structure.

This Scoping Study will develop and evaluate alternatives, and recommend a preferred alternative to the Village Trustees.





# Existing Transportation Conditions





# Existing Transportation Conditions





# Existing Transportation Conditions





# Existing Transportation Conditions



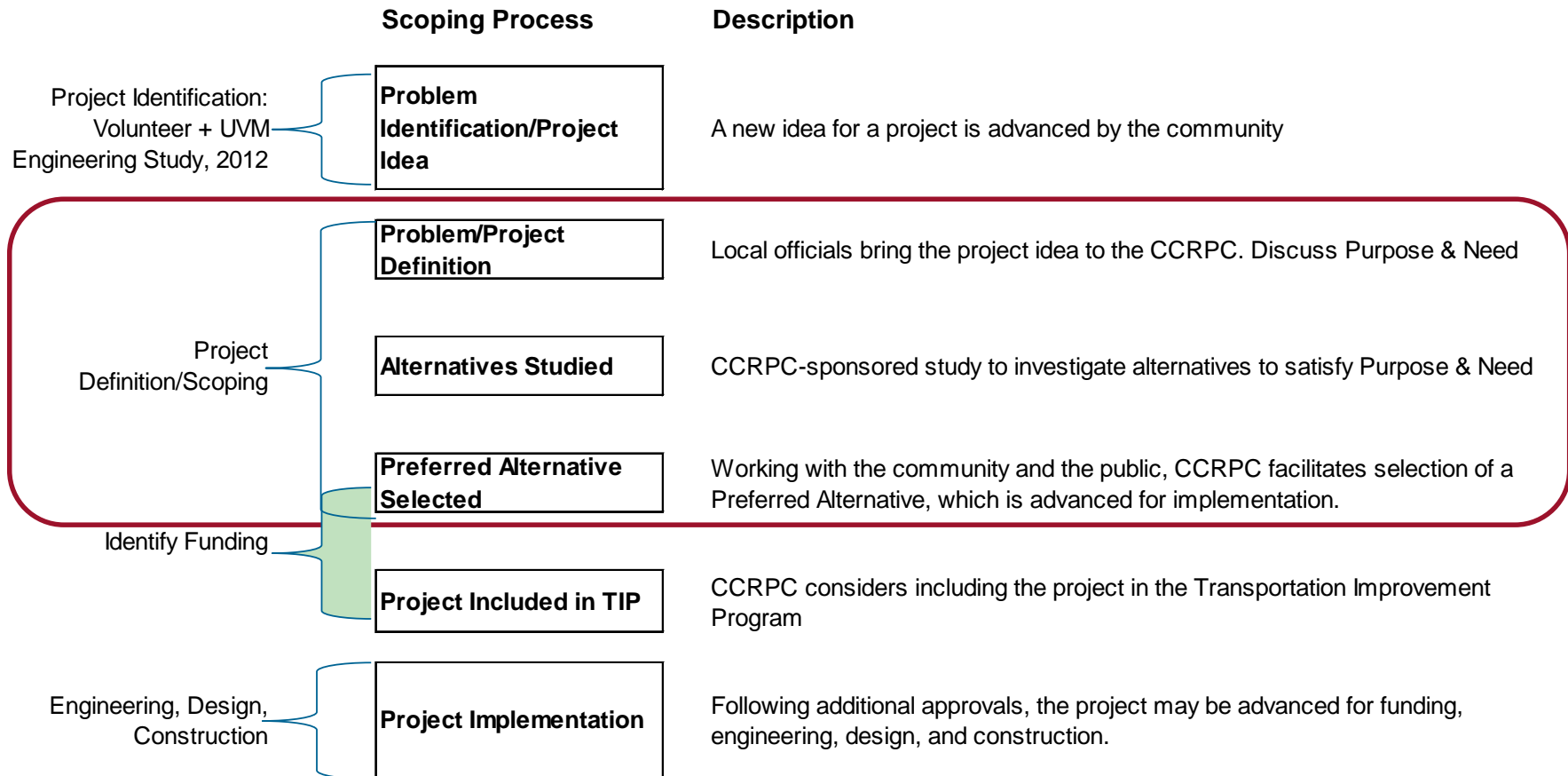
# Goals for Tonight's Meeting-Gather Public Input

- Specific issues and concerns with the train station, and related access and circulation.
- Potential opportunities to improve pedestrian safety and comfort, transit access, and parking.
- Potential alternatives to consider.





# The Scoping Process

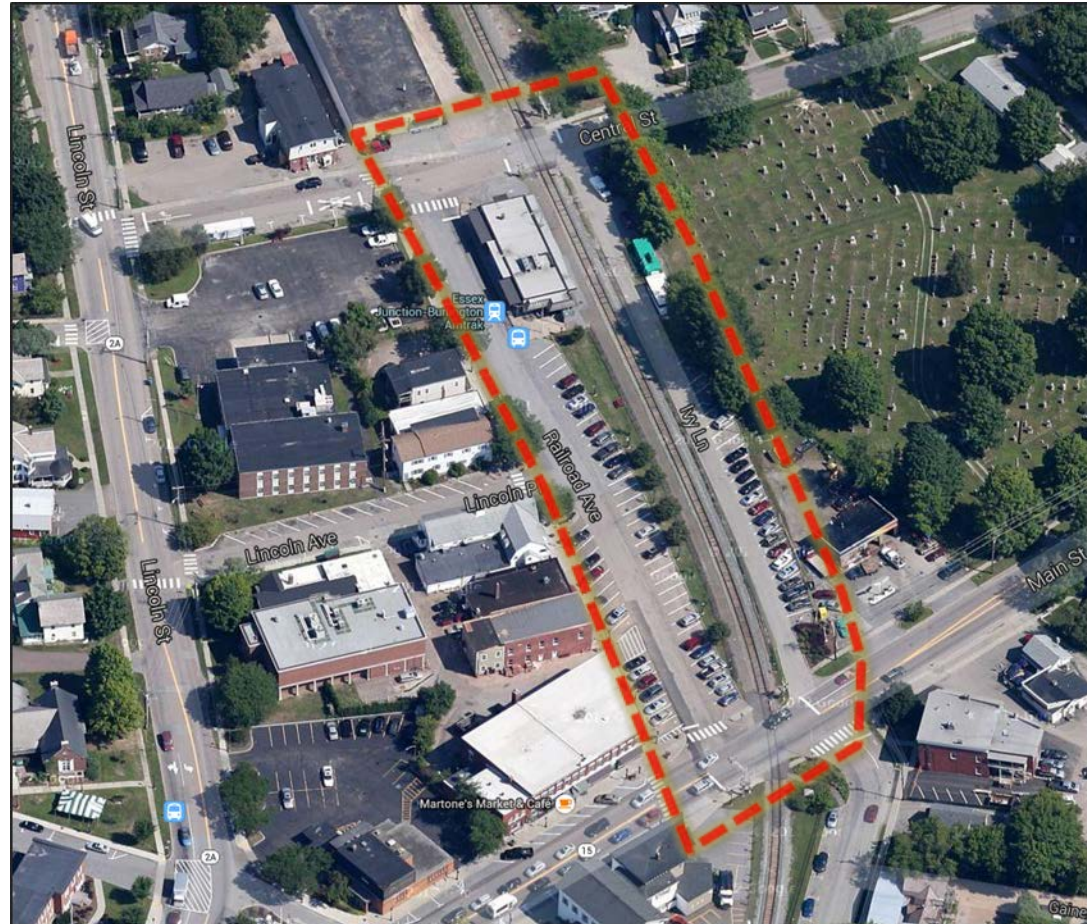




# Project Area

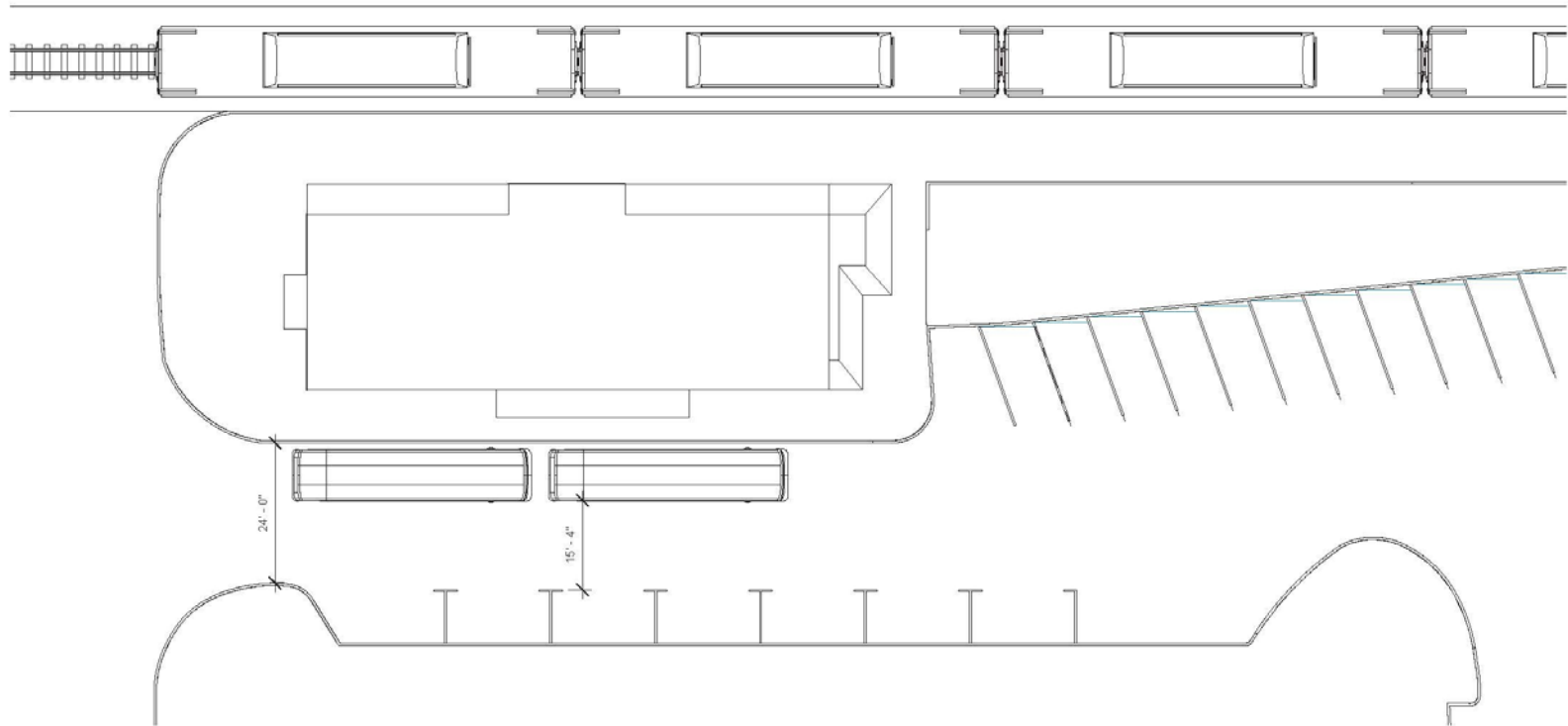
Base Maps in development. Following slides will describe:

- CCTA service, ridership
- sidewalks, ped amenities
- parking
- train ridership.





# Essex Train Station – Existing Site Plan



## ESSEX TRAIN STATION

### EXISTING SITE PLAN

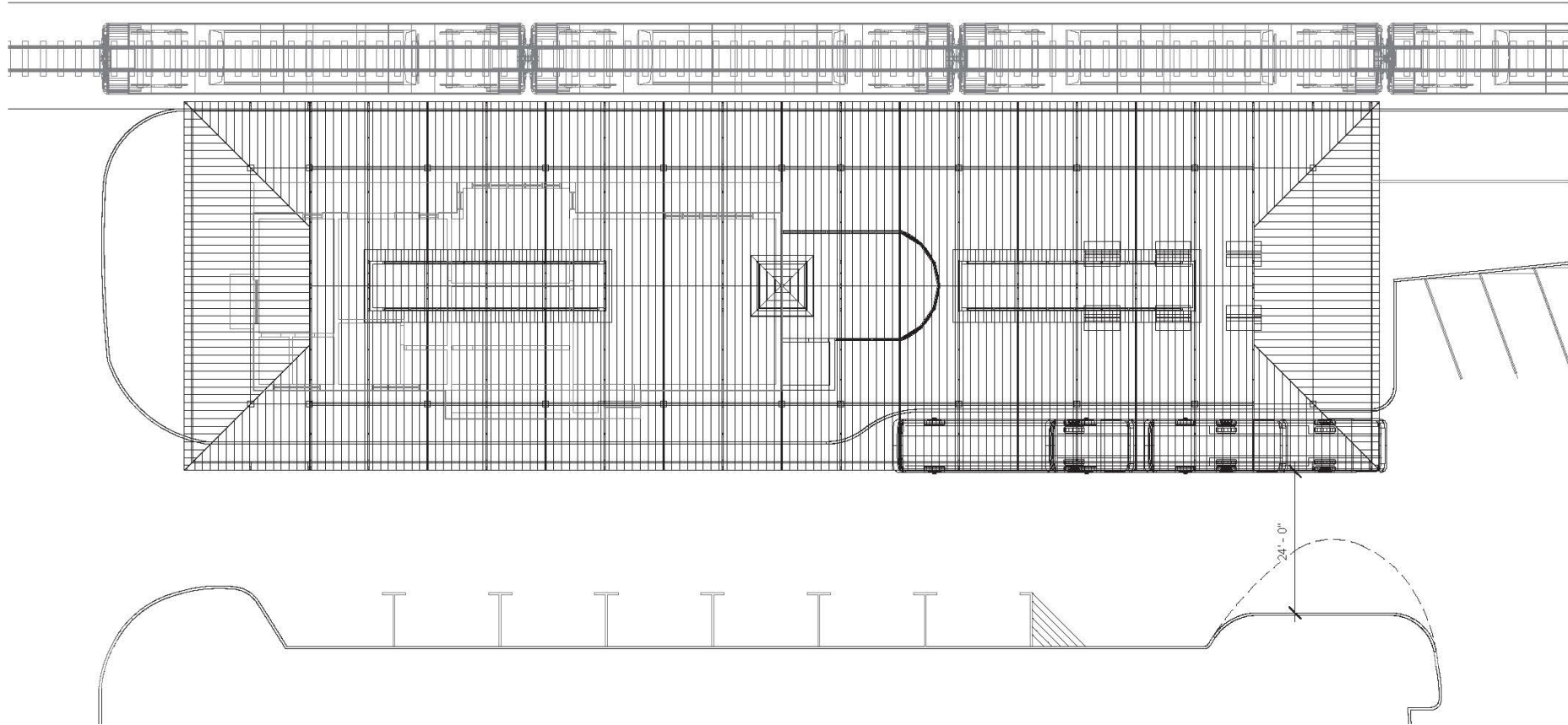
02/20/15



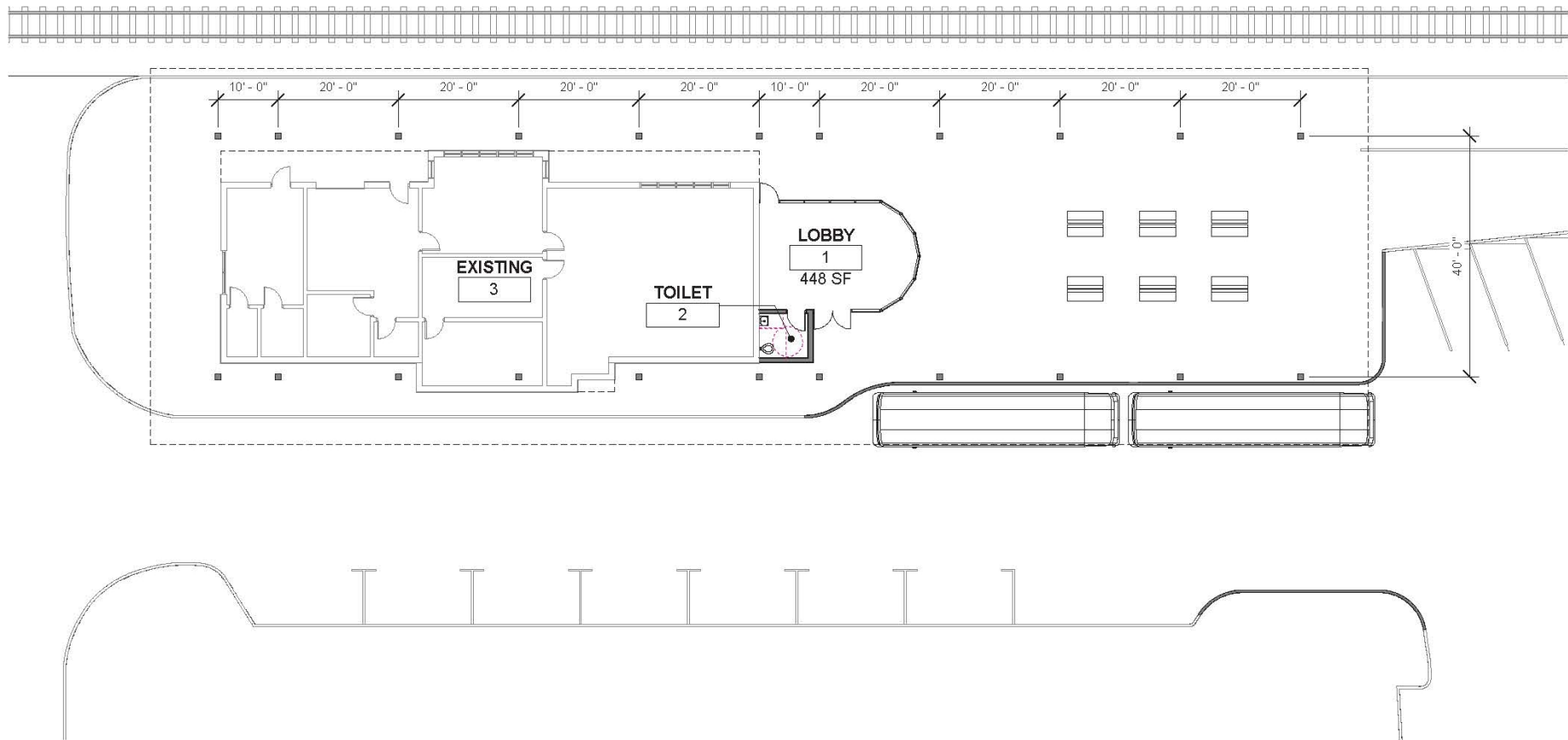
20 MAIN ST., ESSEX JUNCTION, VT 05452  
P: 802.879.5153  
F: 802.872.2764  
SCOTTPARTNERS.COM



# Essex Train Station – Canopy Concept



# Essex Train Station – Potential Site Plan

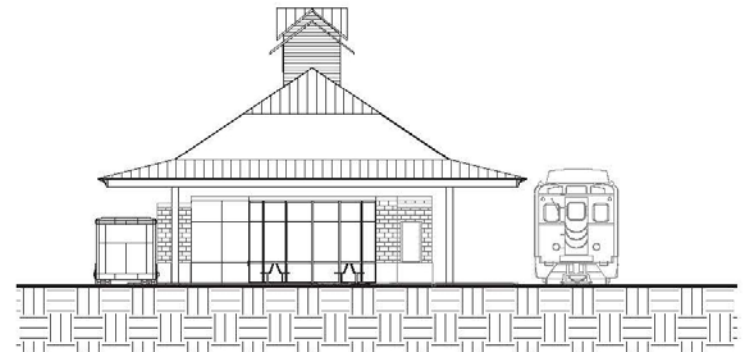




# Essex Train Station – Potential Elevations



① WEST ELEVATION  
1/16" = 1'-0"



② SOUTH ELEVATION  
1/16" = 1'-0"

## ESSEX TRAIN STATION

## PROPOSED ELEVATIONS

02/20/15

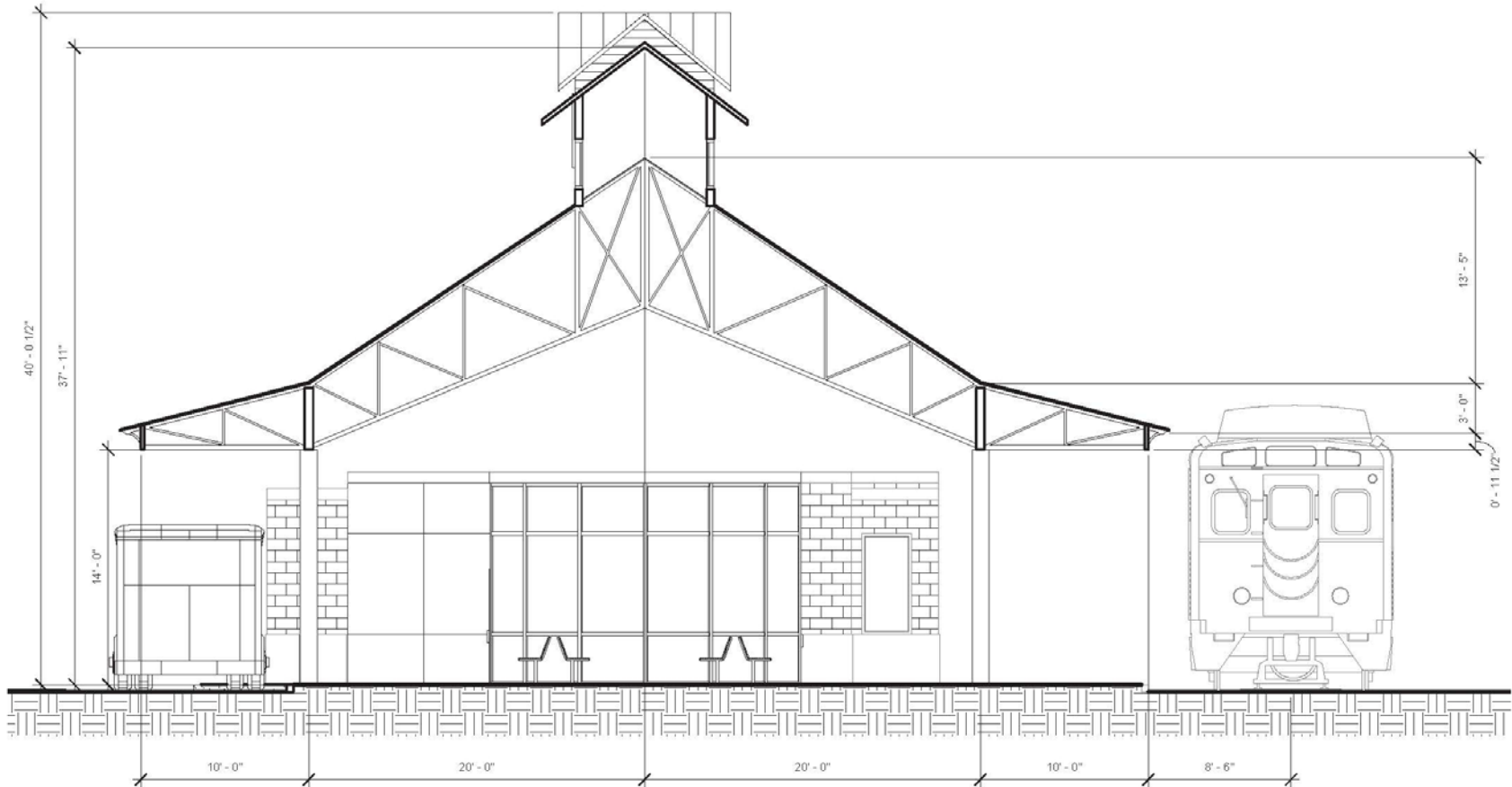


04.02.2015  
RSG



20 MAIN ST. ESSEX JUNCTION, VT 05452  
P: 802.879.5153  
F: 802.872.2764  
[SCOTTPARTNERS.COM](http://SCOTTPARTNERS.COM)

# Essex Train Station – Potential Cross Section



## ESSEX TRAIN STATION

### PROPOSED CROSS SECTION

02/20/15



04.02.2015  
RSG



20 MAIN ST. ESSEX JUNCTION, VT 05452  
P: 802.879.5153  
F: 802.872.2764  
SCOTTPARTNERS.COM



# Essex Train Station – Potential Perspective



## ESSEX TRAIN STATION

### EXTERIOR PERSPECTIVE

02/23/15

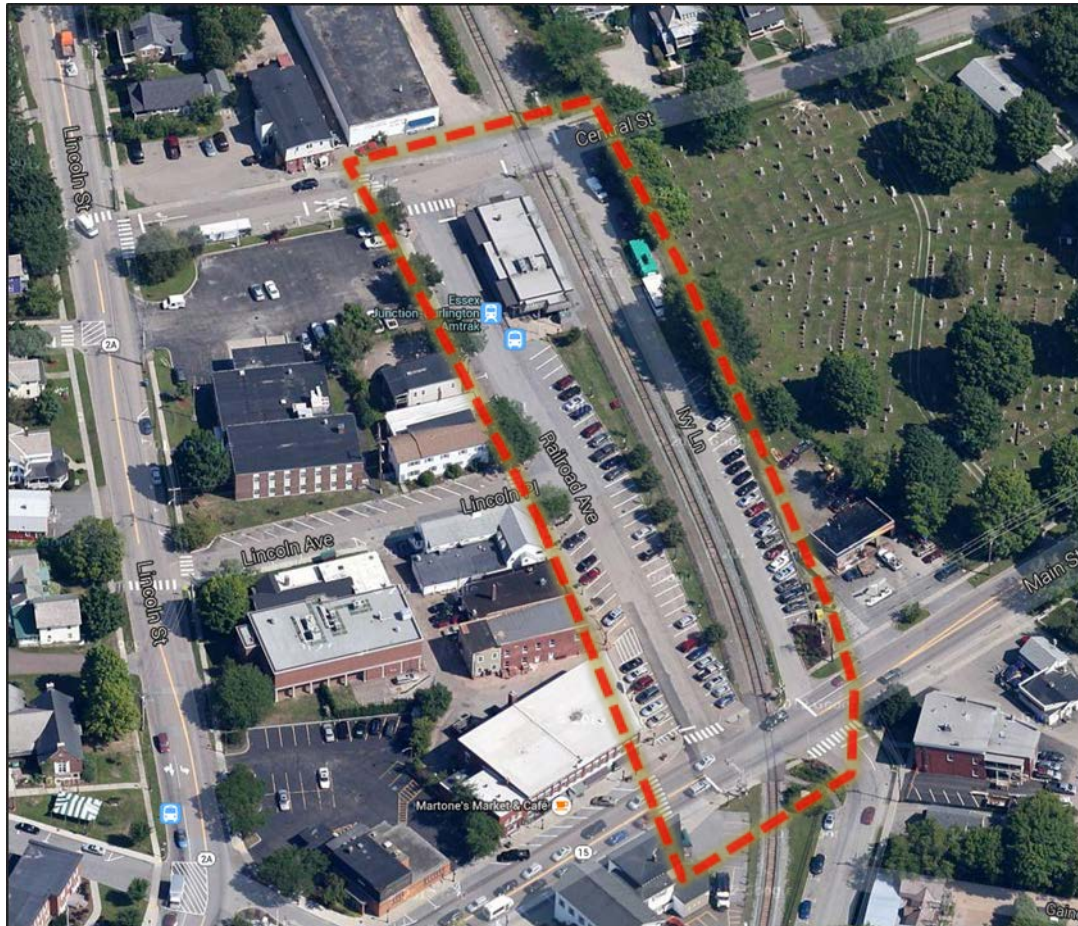


20 MAIN ST. ESSEX JUNCTION, VT 05452  
P: 802.879.5153  
F: 802.872.2764  
[SCOTTPARTNERS.COM](http://SCOTTPARTNERS.COM)



04.02.2015  
RSG

# Discussion — Problems and Opportunities





# Essex Junction Train Station Access and Circulation Scoping Study – Next Steps

Purpose & Need Statement

Alternatives Development

Alternatives Evaluation

Alternatives Presentation-2<sup>nd</sup> public meeting

Scoping Report



# Thank You!

Project Team:

Robin Pierce, Director of Community Development, [robin@essexjunction.org](mailto:robin@essexjunction.org)

Christine Forde, CCRPC, [cforde@ccrpcvt.org](mailto:cforde@ccrpcvt.org)

Bob Chamberlin, RSG, [rchamberlin@rsginc.com](mailto:rchamberlin@rsginc.com)

John Alden, Scott + Partners, [jba@scottpartners.com](mailto:jba@scottpartners.com)

