

Interstate 89 Exit 17 Scoping Study Study Committee Meeting #1 Notes

DATE: Tuesday, August 6, 2013

TIME: 1:00 PM

PLACE: CCRPC, 110 W. Canal Street, #202, Winooski, VT

PRESENT:

Meredith Birkett, CCTA

Jason Charest, CCRPC

Eleni Churchill, CCRPC

Richard Hosking, VTrans D5

Michael LaCroix, VTrans

Matt McMahon, LCRCC

Diane Meyerhoff, Third Sector Associates

Bryan Osborne, Town of Colchester

Craig Plumb, Town of Milton

Steve Rolle, Parsons Brinckerhoff

Josh Schultz, VTrans

Katherine Sonnicks, Town of Milton

1) Introductions and Overview

The meeting began with introductions. Steve Rolle of Parsons Brinckerhoff explained who comprised the consultant team: Parsons Brinckerhoff (lead consultant, transportation planning and conceptual engineering); Third Sector Associates (public outreach); EIV Technical and Hartgen Associates (natural and cultural resources); and Vermont Survey & Engineering (mapping and surveying).

2) Study Process and Status

Steve outlined the study tasks and discussed the schedule (see attachment).

Task 1: Study Administration

Task 2: Public Outreach

Task 3: Initial Data Collection and Base-mapping

Task 4: No Build Traffic and Growth Scenarios

Task 5: Purpose and Need

Task 6: Develop Build Alternatives

Task 7: Constraint Mapping

Task 8: Refine Alternatives

Task 9: Evaluate Alternatives

Task 10: Scoping Report

Jason Charest of CCRPC explained that this project has an aggressive schedule due to the CIRC Alternatives process. A preferred alternative needs to be chosen in time for the November 7th meeting of the CIRC Alternatives Task Force. Bryan Osborne of Colchester suggested that the current effort should build from the three previous scoping studies in this area. Steve agreed and noted that the prior work, including resource constraint mapping and prior alternatives development is helpful; however, traffic data will need to be updated and new conceptual

design alternatives are likely. Richard Hosking of VTrans District 5 noted that new traffic signal controllers and detectors will be installed in this area this fall. Josh Schulz will provide updated bridge pier and deck information to Steve.

3) Public Outreach Plan

Diane Meyerhoff of Third Sector Associates outlined the public outreach plan, including two public meetings and a website (<http://www.ccrpcvt.org/exit17>). Outreach for the public meetings includes:

- Advertisements in *Colchester Sun/Milton Independent*
- Posting on Front Porch Forum by CCRPC
- Posting to Exit 17 website and CCRPC calendar
- Posting to Colchester & Milton municipal websites
- Snail mail to adjoining residents in Colchester and Milton
- Posting to *Free Press* and *Seven Days* calendars
- General Media Advisory

For meeting publicity, Bryan suggested contacting Sarah Enzley who is the Colchester outreach person. Additional suggestions are welcome for getting the word out.

The team is also planning to conduct up to five stakeholder interviews to help identify local business issues and concerns. The interviews will likely be in person and will incorporate survey-type questions about traffic issues, transportation needs (delivery, employee access, customer access, etc.), and future development plans. In terms of businesses to contact, Katherine Sonnicks of Milton suggested NG Advantage, Charlebois, Quarry (Bill Daley), and Pomerleau. She will provide contact information to the consultant team.

Meredith Birkett suggested that the team take information about Go! Chittenden County (Transportation Demand Management, TDM, an effort now underway) to the businesses and incorporate TDM questions into the survey. She suggested Husky might be another business contact.

4) Initial Purpose & Need Statement

Steve reviewed the initial Purpose & Need Statement (see attached), which was developed and by the prior 2006 study of the interchange, and asked what the committee which aspects still applied, and which needed to be modified. Bryan noted that the fundamental difference between the previous study and today is that there are critical problems with the interchange now, rather than just projected in the future. Immediate action is necessary. In addition, now there are multimodal goals and the need to accommodate transit and Complete Streets strategies. Meredith Birkett of CCTA noted that the Park & Ride needs to continue to be served. Eleni Churchill of CCRPC would like to tie the Purpose & Need Statement to the ECOS Plan. The statement will be refined when the Existing Conditions Report is completed.

The group asked that the following be reflected in the Purpose & Need Statement:

- Change “preserve” to improve or enhance
- Reflect the current issues at the interchange
- Include other modes

- Reference the ECOS Plan

5) Growth Assumptions

Steve explained that the data base year is 2010, the project base year is 2015, and the project horizon is 2035 (20-year forecast). Steve showed data about town population and annual average daily traffic (AADT) at the interchange. He explained that the study will need to include forecasts which are based on regional growth assumptions during a specific time period. Forecasts are based on socio-economic projections and/or historic trends. Any project proceeding through a NEPA (National Environmental Policy Act) review process would be required to consider projected conditions over a 20-year timeframe.

Bryan asked that the Colchester growth assumption computations be sent to him for review with the Planning Department (Jason will do so). Steve summarized that growth rates be based on the traffic forecasts derived from the CCRPC Transportation Model and will be compared to historical growth rates to help gauge reasonableness. He further suggested that sensitivity testing can be employed to gauge how the final alternatives would perform over higher than projected traffic loads as a means of understand their ability to accommodate further growth.

6) Next Steps/Next Meeting

The anticipated meeting schedule and topics for the Study Committee:

- **August 6, 2013:** Project initiation, Purpose & Need (P&N), growth assumptions
- **September 12, 2013:** Site constraints and issues, finalize P&N, preliminary alternatives
- **October 2013:** Alternatives evaluation
- **February 2014:** Final report

The next steps for the Consultant Team:

- Complete existing and future conditions analysis.
 - Traffic forecasts, traffic simulation modeling, crash history analysis
- Initiate constraints mapping
- Develop near-term alternatives
- Develop initial interchange upgrade alternatives
- Local Concerns Public Meeting on **September 10, 2013, 6:30PM, Colchester Meeting House, 830 Main Street**

The meeting was adjourned at 2:20PM

Study Contacts

CCRPC Project Manager

Jason Charest, JCharest@ccrpcvt.org

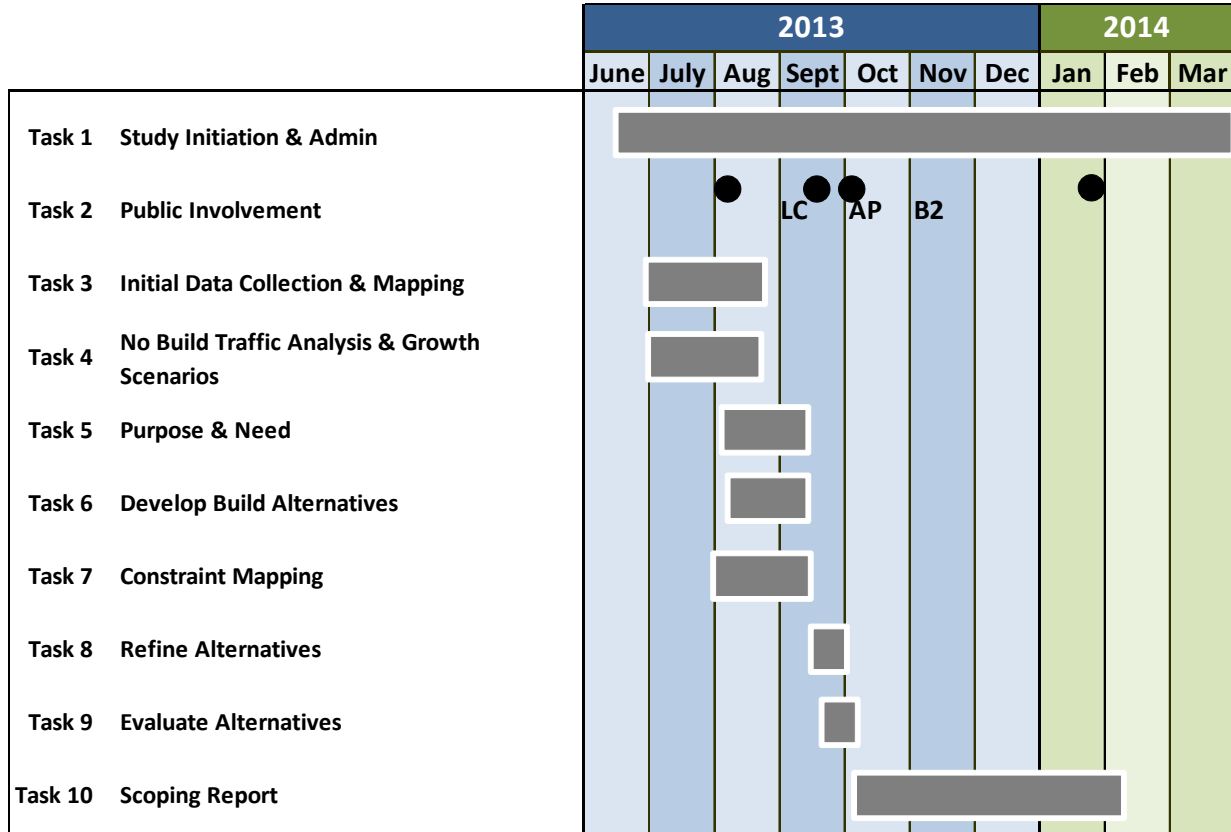
Consultant Team

Steve Rolle, Parsons Brinckerhoff, rolle@pbworld.com

Diane Meyerhoff, Third Sector Associates, diane@thirdsectorassociates.com

Exit 17 Scoping Study Schedule

As of August 6, 2013



KEY

- Public Meetings/Workshop**
- LC Local Concerns Meetings (week of Sept 9)
 - AP Alternatives Presentation Meeting (Oct 8)
 - B2 CCRPC Planning Studies Briefing #2 (Nov 7)

- Study Team Meetings**
- 1 Overview, initial P&N, growth assumptions
 - 2 Refine P&N, site constraints and issues, prelim alts
 - 3 Alts evaluation
 - 4 Final recs and report

Exit 17 Initial Purpose and Need Statement

The Purpose and Need statement defines why the proposed project(s) is being pursued (*Purpose*) and provides specific supporting evidence of the problems to be addressed (*Needs*).

Prior study of Exit 17 (2006) suggested the following as a **Purpose** statement for subsequent study of interchange improvements:

The purpose of this transportation project is to preserve the operation of the Exit 17 interchange so that it continues to provide a safe and efficient connection between the interstate and arterial highway systems while also accommodating travel demand anticipated as the surrounding Growth Center develops.

Consider whether this statement should be modified to best describe the desired outcomes of the project(s), and if so, how.

Needs will be finalized following completion of existing and future conditions analysis and discussion at the Local Concerns meeting. However, we will begin to discuss needs in general terms at our team meeting on August 6th, so begin to think about these as well. Needs typically fall under one or more of the following general categories:

- Travel Demand and System Capacity
- Safety
- Legislative Direction
- Urban Transportation Plan Consistency
- Modal Interrelationships
- System Linkages
- Condition of an Existing Facility.

August 6, 2013