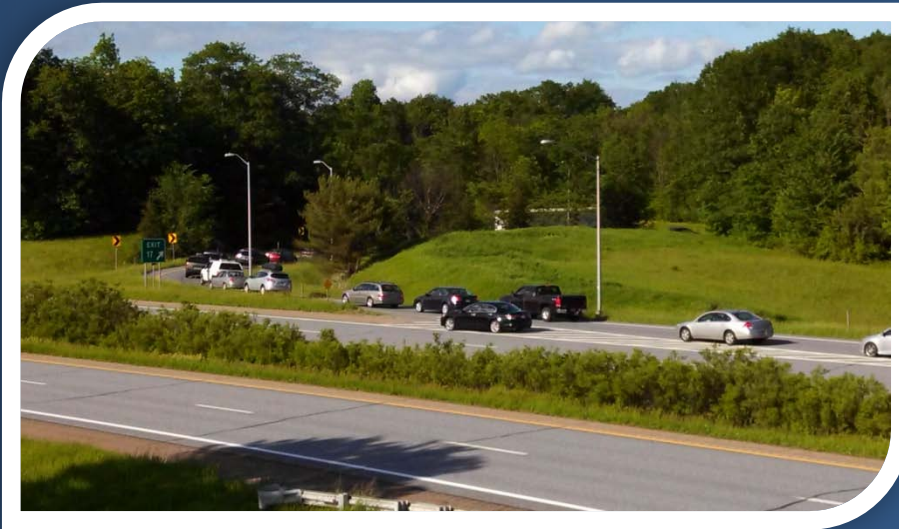


Exit 17 Scoping Study

Study Team Meeting #1



Aug 6, 2013

CCRPC
Winooski, Vermont

Meeting Agenda

- Introductions
- Review Study Process and Status
- Public Outreach Plan
- Stakeholder Interviews
- Initial Purpose and Need
- Growth Assumptions
- Next Steps/Next Meeting
- Other Items

Study Team

Agencies and Towns

- CCRPC
- VTTrans
- Town of Colchester
- Town of Milton
- FHWA

Consultant Team

- Parsons Brinckerhoff
Lead consultant, transportation planning and conceptual engineering
- Third Sector Associates
Public outreach
- EIV Technical and Hartgen Associates
Natural and cultural resources
- Vermont Survey & Engineering
Mapping and surveying

Study Team

CCRPC Project Manager

- Jason Charest
CCRPC
JCharest@ccrpcvt.org

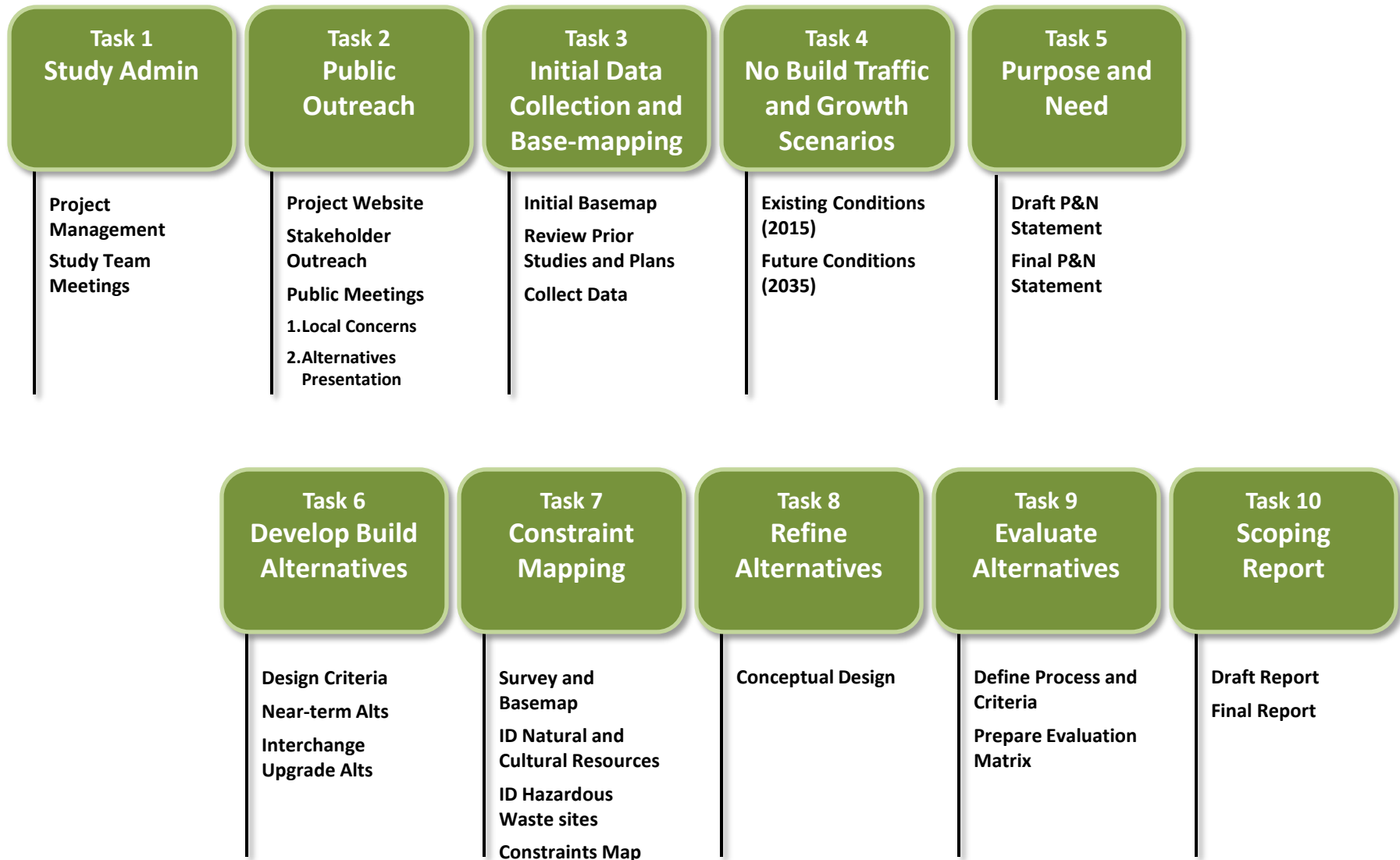
Consultant Team

- Steve Rolle
Parsons Brinckerhoff
rolle@pbworld.com
- Diane Meyerhoff
Third Sector Associates
diane@thirdsectorassociates.com

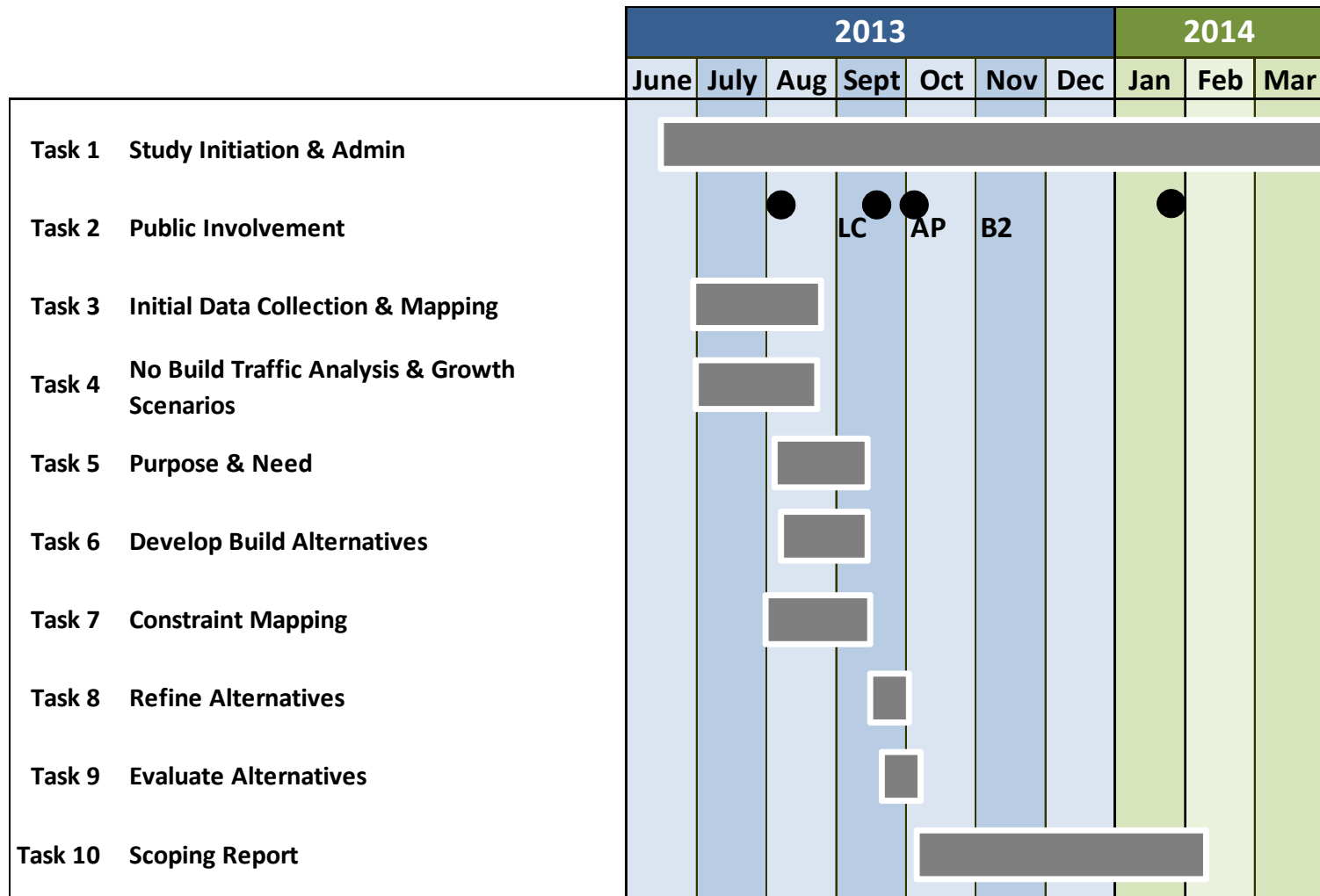
Meeting Agenda

- Introductions
- **Review Study Process and Status**
- Public Outreach Plan
- Stakeholder Interviews
- Initial Purpose and Need
- Growth Assumptions
- Next Steps/Next Meeting
- Other Items

Study Process



Study Schedule



KEY

Public Meetings/Workshop

- LC Local Concerns Meetings (week of Sept 9)
- AP Alternatives Presentation Meeting (Oct 8)
- B2 CCRPC Planning Studies Briefing #2 (Nov 7)



Study Team Meetings

- 1 Overview, initial P&N, growth assumptions
- 2 Refine P&N, site constraints and issues, prelim alts
- 3 Alts evaluation
- 4 Final recs and report

Meeting Agenda

- Introductions
- Review Study Process and Status
- **Public Outreach Plan**
- Stakeholder Interviews
- Initial Purpose and Need
- Growth Assumptions
- Next Steps/Next Meeting
- Other Items

Meeting Agenda

- Introductions
- Review Study Process and Status
- Public Outreach Plan
- **Stakeholder Interviews**
- Initial Purpose and Need
- Growth Assumptions
- Next Steps/Next Meeting
- Other Items

Stakeholder Interviews

- Purpose is to talk to identify issues and concerns
- Supplements Local Concerns meeting
- Up to 5 interviews with local business owners or managers.

Stakeholder Interviews

- Three options for conducting interviews
 - In-person
 - Phone
 - Survey (mail or online).
- Potential Questions
 - List/rate traffic issues
 - Describe transportation needs (e.g. – delivery, customer access, etc)
 - Any plans for further development on the property or growth of business
 - What else?

Meeting Agenda

- Introductions
- Review Study Process and Status
- Public Outreach Plan
- Stakeholder Interviews
- **Initial Purpose and Need**
- Growth Assumptions
- Next Steps/Next Meeting
- Other Items

Purpose and Need Statement

- The **Purpose** defines *what* the proposed action should accomplish.
- The **Need** is specific evidence showing *why* the proposed action is necessary.
- A Good Purpose and Need Statement:
 - Is concise
 - Non-technical and easy to understand
 - States a positive outcome
 - Does not identify a specific approach or solution
- The study's evaluation process will relate to the Purpose and Need.
- A Purpose and Need statement is needed to guide any subsequent NEPA process.

2006 Study Suggested *Purpose* Statement

The purpose of this transportation project is to preserve the operation of the Exit 17 interchange so that it continues to provide a safe and efficient connection between the interstate and arterial highway systems while also accommodating travel demand anticipated as the surrounding Growth Center develops.

Identifying Needs

- Needs will be finalized following existing/future conditions assessment and the local concerns meeting.
- Needs may relate to:
 - Travel Demand
 - Safety
 - Legislative Direction
 - Urban Transportation Plan Consistency
 - Modal Interrelationships
 - System Linkages
 - Condition of an Existing Facility.

Meeting Agenda

- Introductions
- Review Study Process and Status
- Public Outreach Plan
- Stakeholder Interviews
- Initial Purpose and Need
- **Growth Assumptions**
- Next Steps/Next Meeting
- Other Items

Growth Scenarios

- Data Base year: 2010
 - Census data, traffic data, model base year.
- Project Base year: 2015
- Project Horizon year: 2035
 - 20-year forecast

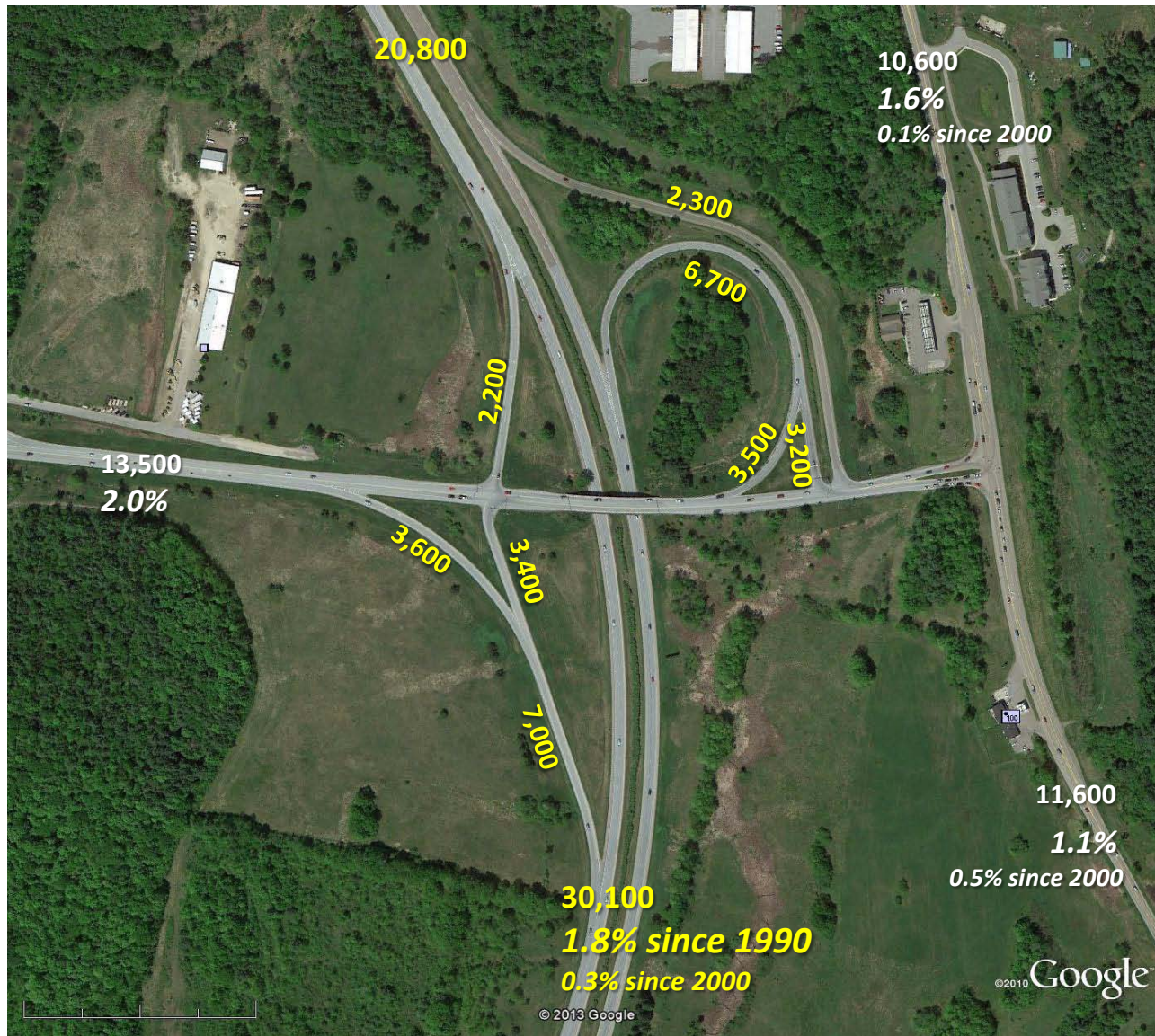
Historical Population Data

	Colchester	Milton	Chittenden County
1990 Population	14,731	8,404	131,761
2010 Population	17,067	10,352	156,545
Growth (20-years)	2,336	1,948	24,734
Avg Annual Growth Rate (1990 – 2010)	0.7%	1.0%	0.9%

Existing AADT



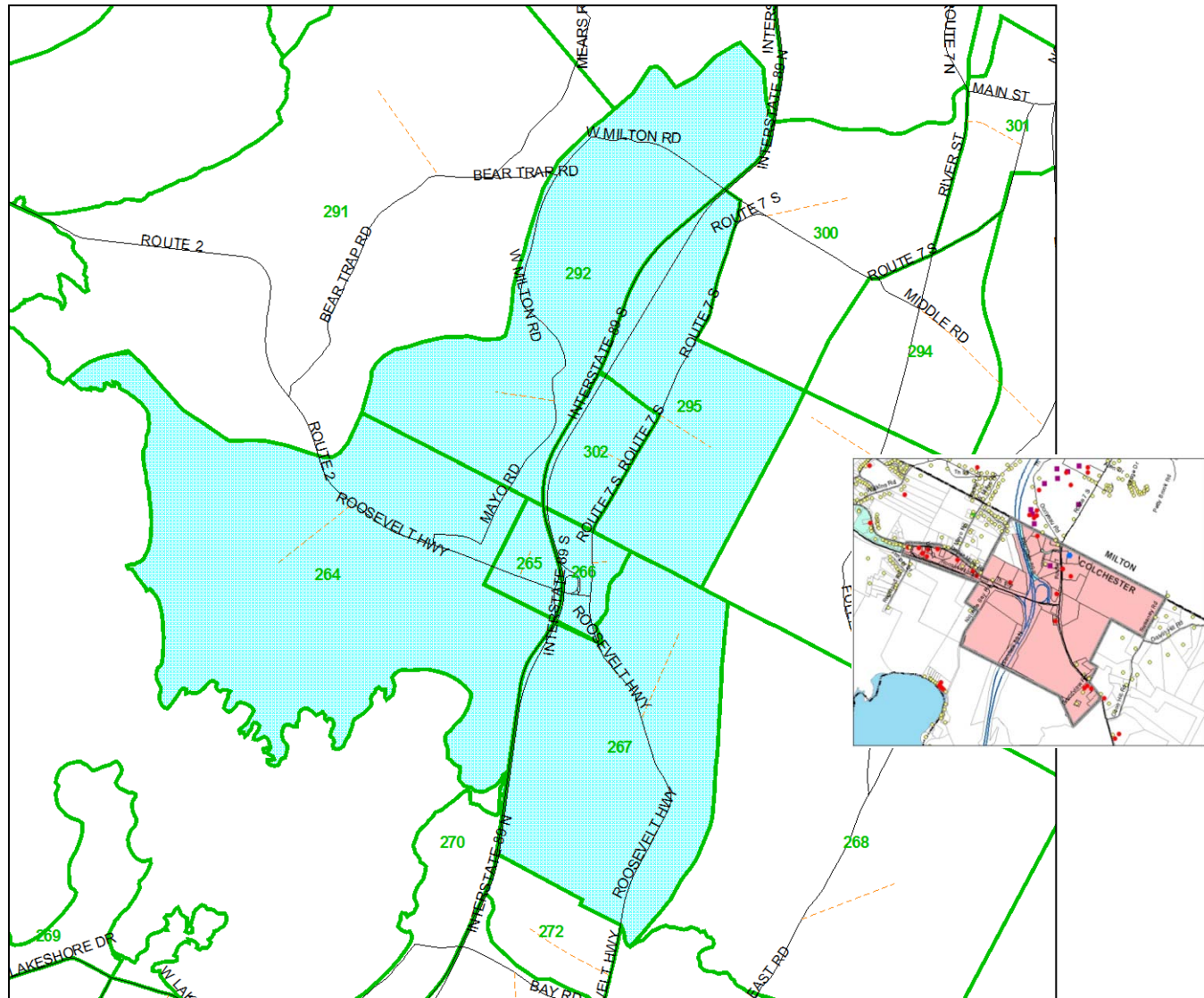
Existing AADT and Growth Rates since 1990



“Build Out” vs. Forecast

	“Build Out” Scenarios	Forecasts
Growth Assumptions	Hypothetical or presumed.	Predicted.
Timeframe	Not time-related.	Specific.
NEPA compatibility	Not a basis for NEPA evaluation.	NEPA requirement.
Methods	<ol style="list-style-type: none">1. Estimate land capacity.2. Apply ITE trip generation rates.3. Include background growth based on historic trends.	Travel model and/or Historic Trends.
Applicable Study Area	Small, specific area.	Any size. Model includes full region.

Analysis Areas



Regional Model Assumptions

	Colchester TAZs 265 and 266	TOTAL Colchester and Milton Analysis Area
New Housing Units	90	326
New Commercial (Employees)	97	1,216
<i>New Trips (AM Peak)</i>	<i>78</i>	<i>711</i>
<i>New Trips (PM Peak)</i>	<i>97</i>	<i>878</i>

- 34% increase in Households, or 1.4% annual growth
- 96% increase in Employees, or 3.4% annual growth
- 68% increase in Trip Generation, or 2.6% annual growth

Recommendation – Growth Assumption

- Use Growth Rates based on CCRPC Model
- Compare to Historic Rates
- Conduct Sensitivity Tests
 - Estimate “Reserve Capacity”
 - Test under “Very Long-Range Forecast”

Project Team Meetings

Anticipated Meetings Schedule

(subject to change)

- **August 6, 2013**
Project initiation, P&N, growth assumptions
- **September 2013**
Site constraints and issues, finalize P&N, preliminary alternatives
- **October 2013**
Alternatives evaluation
- **February 2014***
Final report.

**If needed*

Next Steps/Next Meeting

Next Steps

- Complete existing and future conditions analysis.
 - Traffic forecasts, traffic simulation modeling, crash history analysis.
- Initiate constraints mapping
- Develop near-term alternatives
- Develop initial interchange upgrade alternatives
- Prepare for local concerns meetings

Next Meetings

- Local Concerns Meeting: September 10, 2013
- Project Team: September 12, 2013