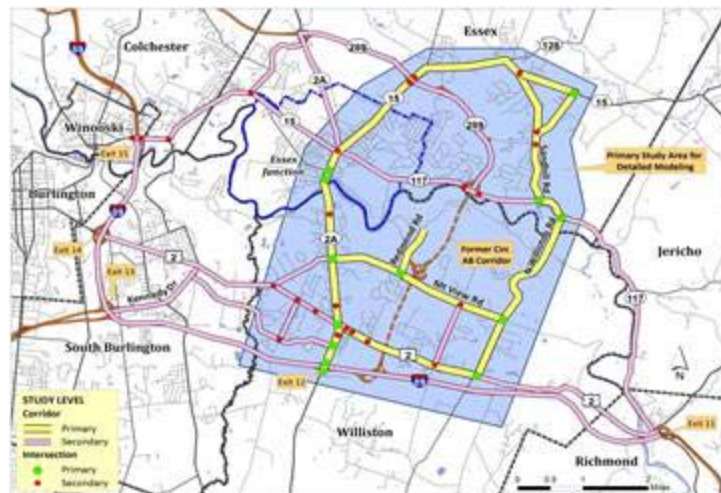


Williston-Essex Network Transportation Study (WENTS) Public Meeting #1 Tuesday, June 19, 2012, 7:30-9:00 PM, Williston Town Hall

Background

Governor Shumlin's announcement that the Circumferential Highway (Circ) - as originally conceived - would not be built leaves major portions of Williston, Essex and Essex Junction without an integrated, coordinated plan for addressing congestion and safety. For this reason, the CCRPC in conjunction with the towns, VTrans and other stakeholders has initiated the Williston-Essex Network Transportation Study (WENTS).

The goal of WENTS is to develop a multimodal transportation improvement plan for major roadways in the study area (see map) to address mobility, connectivity, and safety. The Plan will include a comprehensive and coordinated list of highway, transit, bicycle, pedestrian, and land use recommendations.



Study area for Williston-Essex Network Transportation Study (WENTS)

Study Sponsors

Town of Williston, Town of Essex, Village of Essex Junction, Chittenden County Regional Planning Commission (CCRPC)

Study Contact Information

CCRPC Project Manager

Eleni Churchill, 660-4071 x11, echurchill@ccrpcvt.org

Consultant Team Project Manager

Bob Chamberlin, Resource Systems Group, (802) 295-4999, robert.chamberlin@rsginc.com

For more information on this study go to the CCRPC web site:

<http://www.ccrpcvt.org>

**Williston-Essex Network Transportation Study (WENTS)
Comment/Concern/Question Form**

Please use this form to make comments, express concerns, or ask questions about the Facility. We welcome feedback on any of our public meetings and handouts. Thanks for your time and interest.

Date _____

Optional: Name: _____
 Address: _____
 Phone: _____
 Email: _____

Please submit this sheet at the meeting, or mail to:
Eleni Churchill, Senior Transportation Planning Engineer
CCRPC, 110 West Canal Street, Suite 202, Winooski, VT 05404

Email to: echurchill@ccrpcvt.org

Please note: Information you provide is considered public according to Vermont law and is therefore available for public inspection.