



Railyard Enterprise Project

Phase 2: Supplemental Scoping

Steering Committee Meeting #1

January 5, 2017

Agenda

1. Welcome, Introductions, Changes to the Agenda
2. Public Comment Period
3. Status of Project
4. Scope of Work
 - I. Tasks
 - II. Schedule
 - III. Key Risks and Items of Interest
5. Process Moving Forward
6. Next Steps

Railyard Enterprise Project Purpose & Need

The purpose of the Railyard Enterprise Project (REP) is to develop a network of multimodal transportation infrastructure improvements in the Pine Street and Battery Street area, and to:

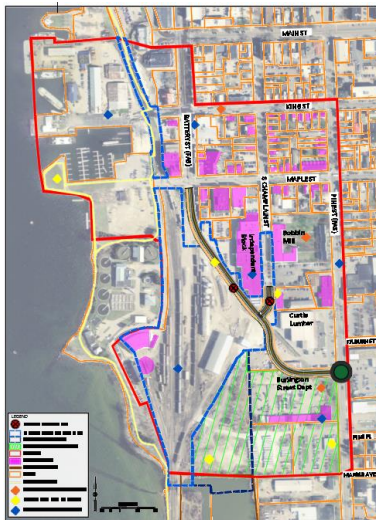
1. Support economic development in the area;
2. Improve livability of the surrounding neighborhoods;
3. Enhance multimodal travel connectivity between the Pine Street corridor and Battery Street in the Burlington Waterfront South area; and
4. Improve intermodal connections to the Burlington Railyard, a NHS designated intermodal facility, while reducing the impacts of freight operations on adjacent neighborhoods.

Status of the Project

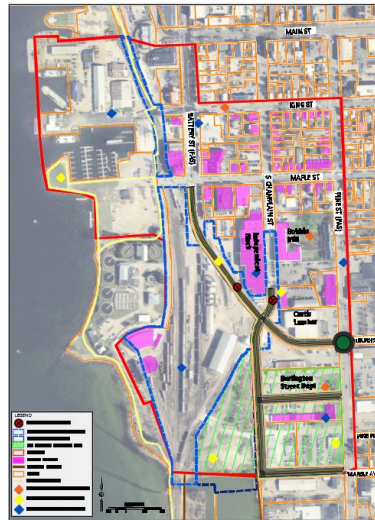
Phase 1: REP Scoping/PEL

- City Council Resolution (Dec 21, 2015): Advance three REP Alts into NEPA
- Final Scoping/PEL Report: <http://www.ccrpcvt.org/our-work/transportation/current-projects/scoping/railyard-enterprise-project>

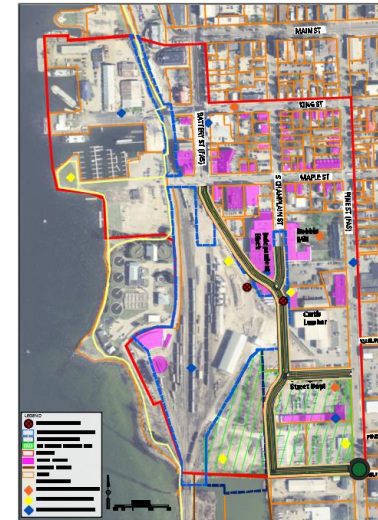
Alternative 1B



Alternative 2



Alternative 5B

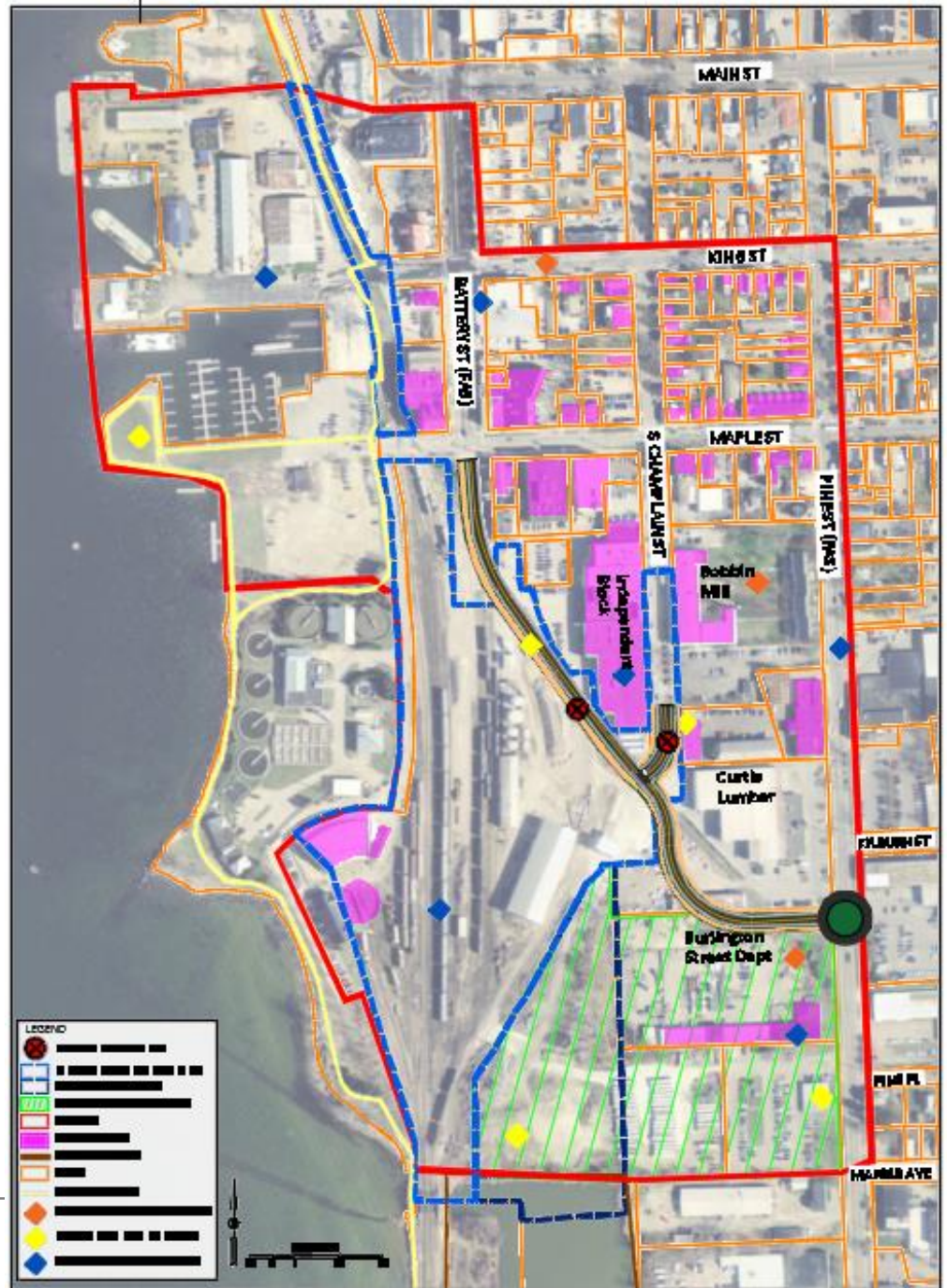


Status of the Project

Phase 2: REP Supplemental Scoping of Alt 1B

- VTrans, City and CCRPC discussions (summer 2016) on ways to expedite delivery of the REP
 - Explore the feasibility of using state/local funding to advance Phase 2 Alt 1B thus avoiding a possibly long and costly federal environmental permitting process
- Scope of Work Development: Fall 2016
- City Council Resolution (Nov 28, 2016): Move forward with REP Supplemental Scoping

Alternative 1B



Scope of Work

- Task 1: Field Data Collection
 - Surveys
 - Cultural & Historic
 - Utilities
- Task 2: City Council Endorsement & Start REP Phase 2
- Task 3: Develop Preliminary 1B Alignments
 - Cross-sections
 - Railyard options. Crossing track, moving track, etc.
 - Evaluation matrix
 - City and VTrans agreement to move forward with a specific 1B alignment with local and state funding
- Task 4: Alt 1B Conceptual Plans
- Task 5: Final Reporting and Presentations

Tasks 1-3 are under contract.

Tasks 4-5 will be determined based on outcome of Task 3.

Schedule

Tasks	Dec 16	Jan 17	Feb	March	April	May - Sept	Oct - Nov
Task 1: Field Data Collection							
Task 2: City Council Endorsement & Start REP Phase 2							
Task 3: Develop three Preliminary 1B Alignments; Meetings with Steering Committee, Stakeholders and City Council.							
Task 4: Alt 1B Conceptual Plans							
Task 5: Final Reporting and Presentations							

Note: See attached detailed schedule

Project Risks

Top Identified Risks

- Hydraulic issues at Superfund area
- Stormwater
- Roundhouse location
- Managing hazardous soils during construction
- Historic nature of entire Independent Block
- Flexibility within Railyard

Moving Forward & Next Steps

- **Task 1** Field investigations continue
- **Task 3** Alt 1B alignment planning work starts, including:
 - Initiate cross-section development with options including, minimal width, through railyard and/or structures.
 - Evaluate 1B alignments based on previously developed criteria/methodology
 - Meet with Stakeholders (April), Steering Committee (late April/early May) to review 1B evaluation results
 - Steering Committee recommends next steps for the City's and VTrans' consideration

Moving Forward & Next Steps

- **Task 3** Alt 1B alignment planning work (Continued)
 - Steering Committee recommends next steps for the City's and VTrans' consideration
 - Recommends a specific 1B alignment for further evaluation in Task 4 of this supplemental scoping work;
Or
 - Recommends that federal funding should be used for the REP implementation. Advance REP Alts 1B, 2 and 5B into NEPA.
 - VTrans and City Council makes the decision (May/June 2017)



Contacts

www.rsginc.com

Jonathan Slason

Consultant Team Manager (RSG)

jonathan.slason@rsginc.com

Eleni Churchill

CCRPC Project Manager

echurchill@ccrpcvt.org

Project Web Site

[http://www.ccrpcvt.org/transportation/scoping/
railyard-enterprise-project/](http://www.ccrpcvt.org/transportation/scoping/railyard-enterprise-project/)