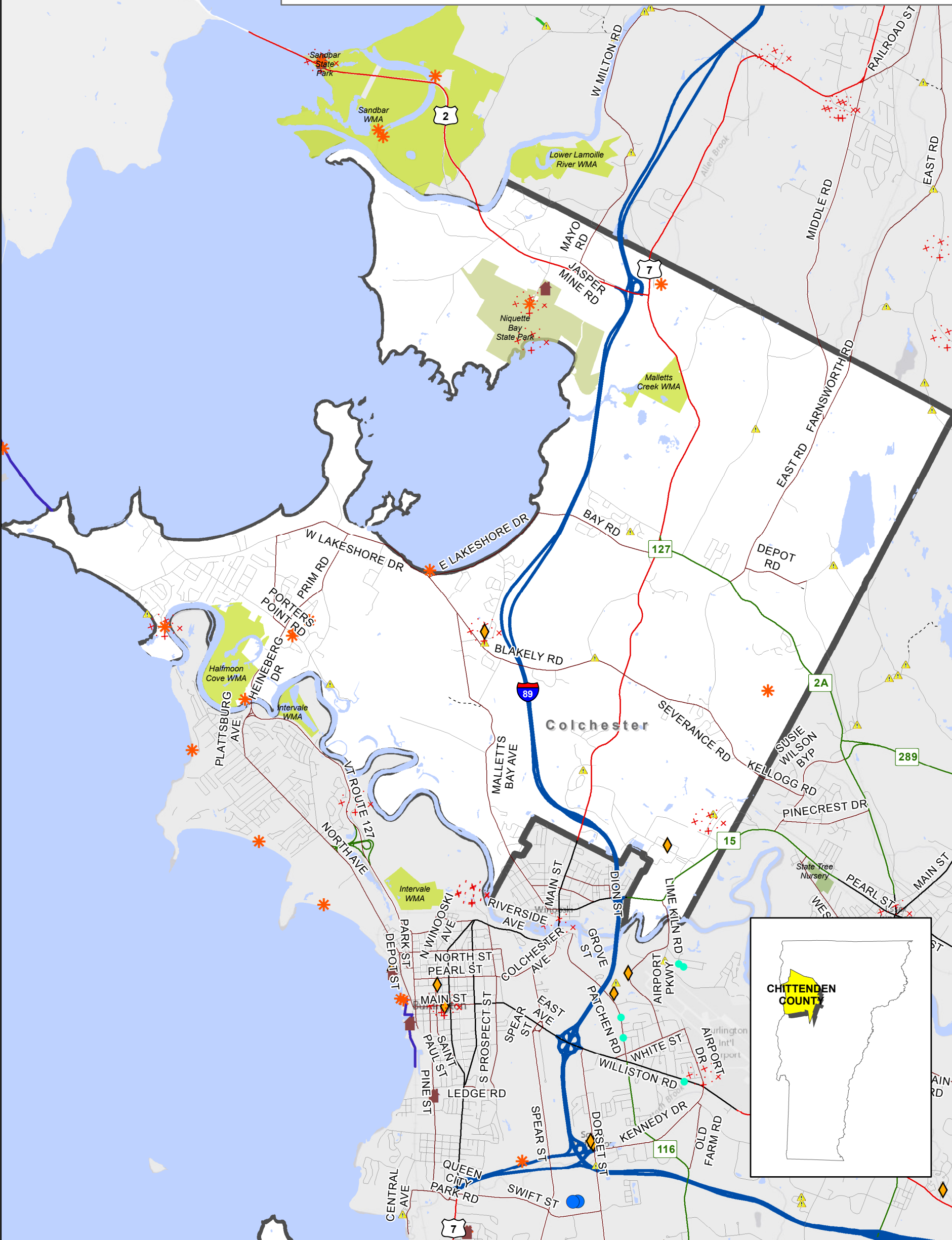


FEMA Public Assistance Project Locations

April 2001 to June 2015

Map 4 All-Hazard Mitigation Plan

Colchester, VT



Damage Category

- Debris Removal
- Protective Measures
- Roads & Bridges

- Water Control Facilities (Stormwater Management)
- Public Buildings
- Public Utilities
- G - Recreational or Other
- Debris Removal
- Roads & Bridges
- Recreational or Other

DATA SOURCES:
Public Assistance Project Locations-FEMA, 2015
State Public Lands -Agency of Natural Resources

0 0.75 1.5 3 Miles

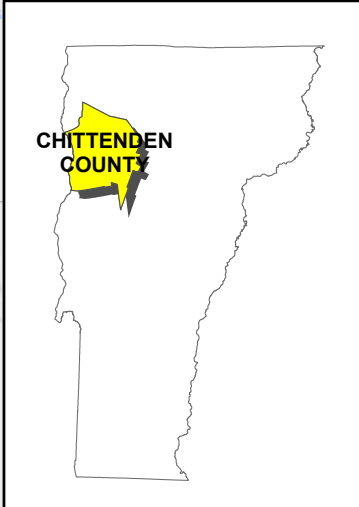
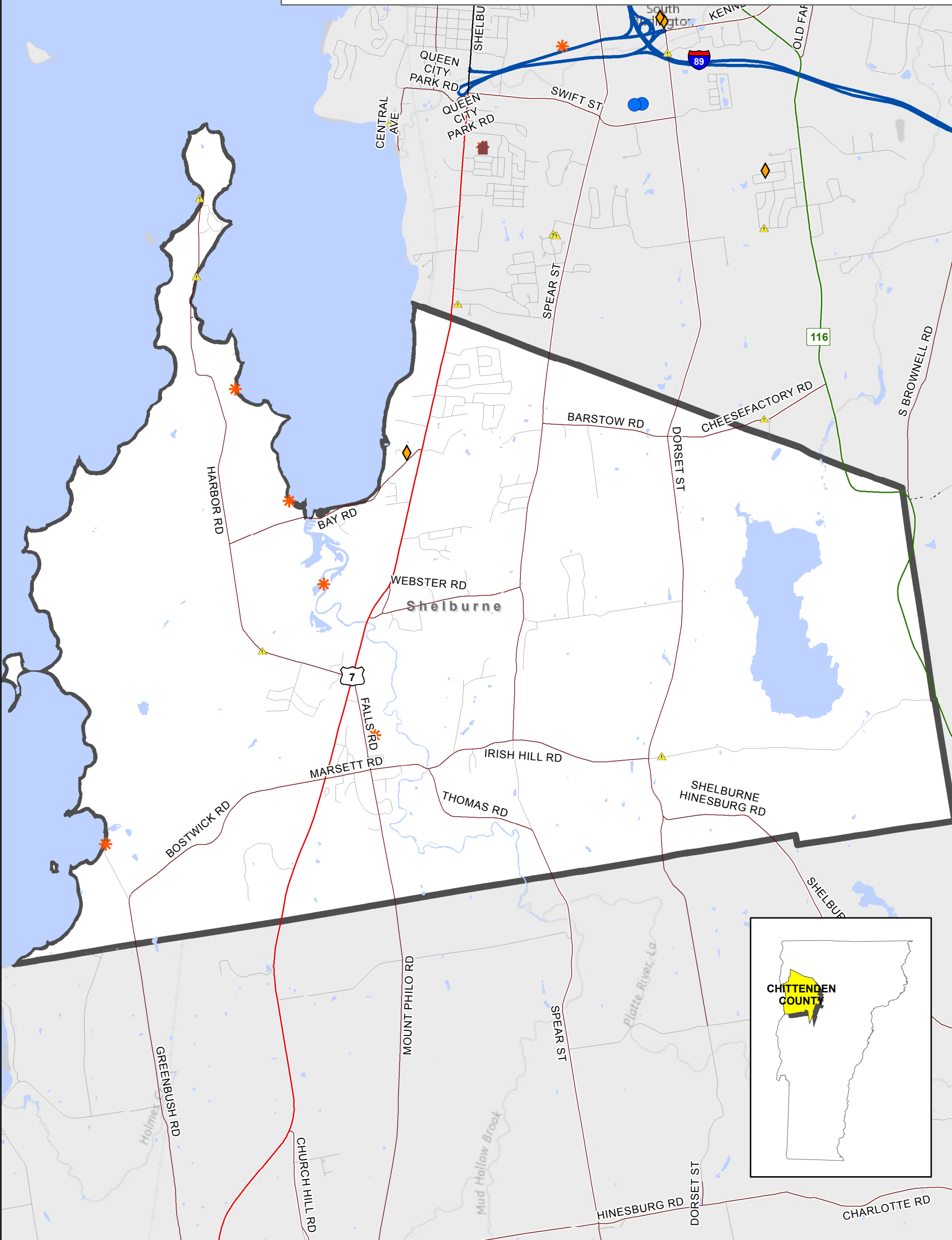
Document Path: D:\Projects\16\AHMP\MXD_County\Map4ProblemAreas_20150127.mxd

FEMA Public Assistance Project Locations

April 2001 to June 2015

Map 4 All-Hazard Mitigation Plan

Shelburne, VT



- | Damage Category | |
|---------------------|--|
| Debris Removal | Water Control Facilities (Stormwater Management) |
| Protective Measures | Public Buildings |
| Roads & Bridges | Public Utilities |
| | G - Recreational or Other |
| | Debris Removal |
| | Roads & Bridges |
| | Recreational or Other |

DATA SOURCES:
Public Assistance Project Locations-FEMA, 2015
State Public Lands -Agency of Natural Resources

0 0.5 1 2 Miles

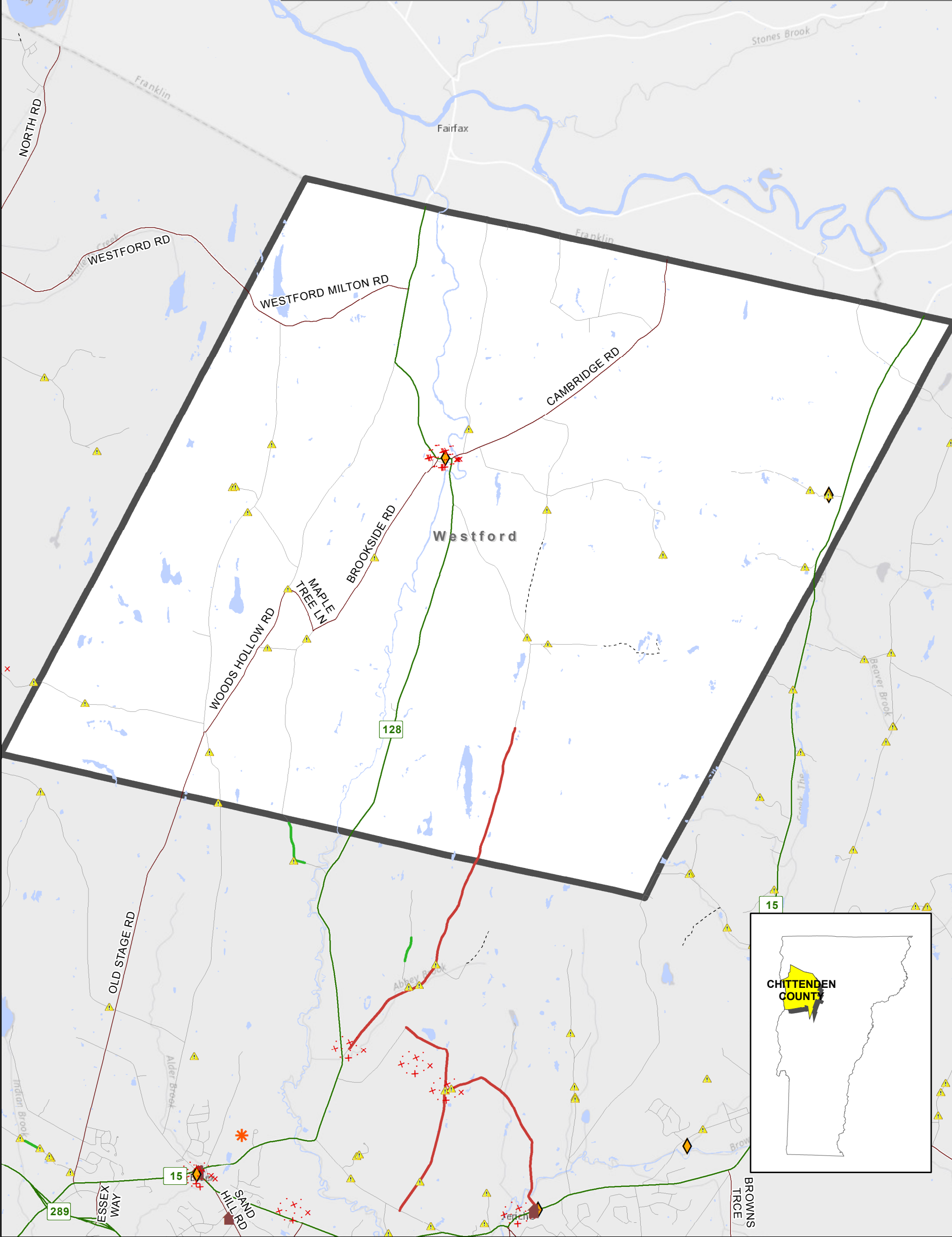
Document Path: D:\Projects\16\AHMP\IMXD_County\Map4ProblemAreas_20150127.mxd

FEMA Public Assistance Project Locations

April 2001 to June 2015

Map 4 All-Hazard Mitigation Plan

Westford, VT



Damage Category

- Debris Removal
- Protective Measures
- Roads & Bridges
- Water Control Facilities (Stormwater Management)
- Public Buildings
- Public Utilities
- G - Recreational or Other
- Debris Removal
- Roads & Bridges
- Recreational or Other

DATA SOURCES:
Public Assistance Project Locations-FEMA, 2015
State Public Lands -Agency of Natural Resources

0 0.75 1.5 3 Miles

