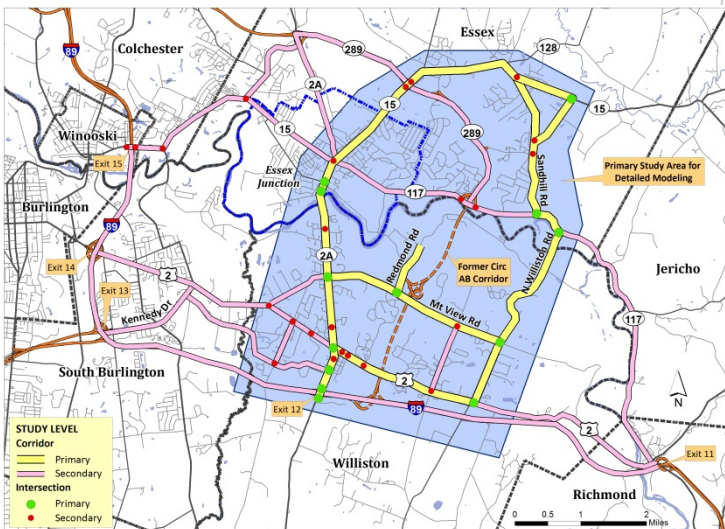


Williston-Essex Network Transportation Study (WENTS)

Public Meeting #2

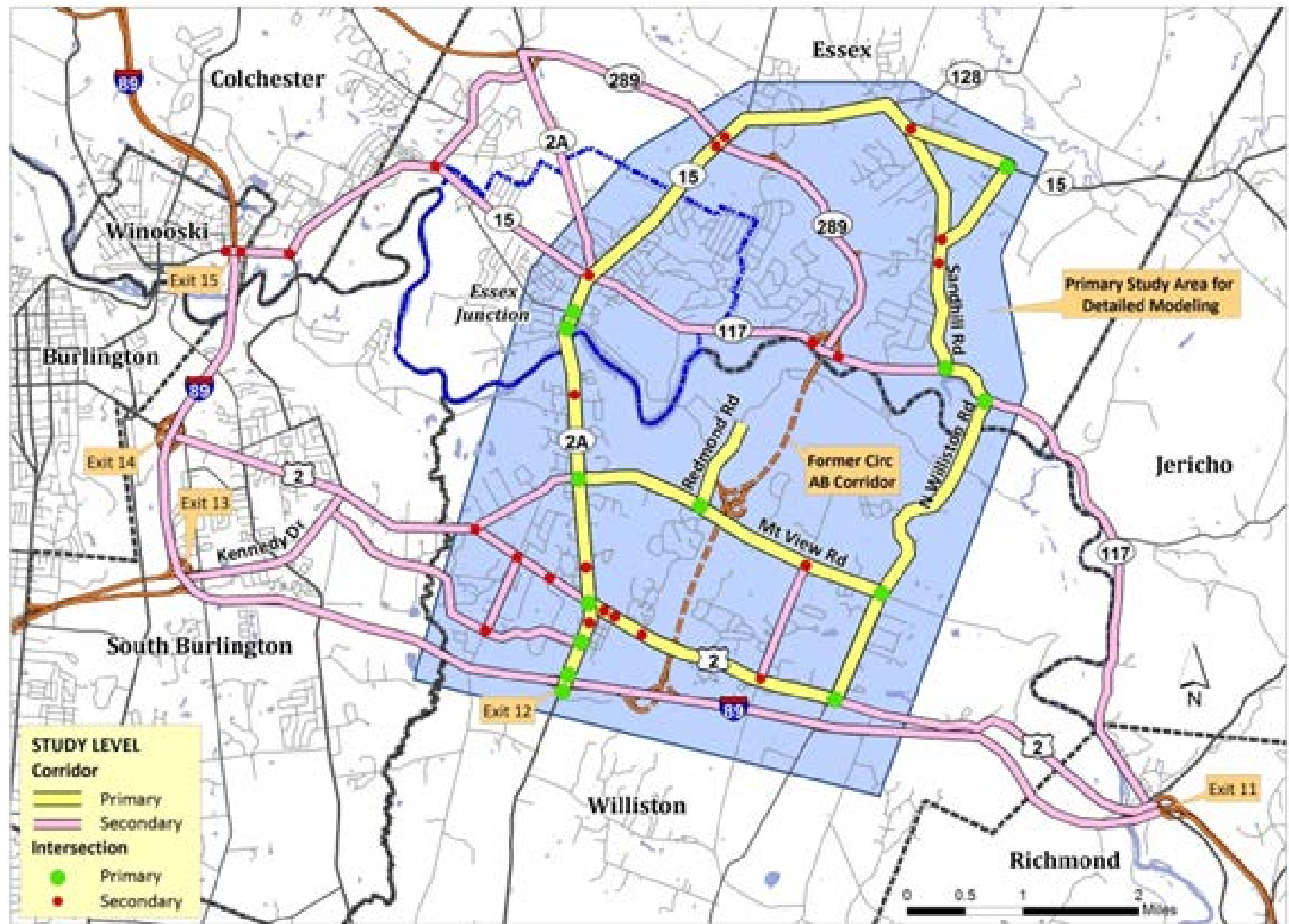
Project Summary & Recommendations



Presentation Overview

- WENTS Study Area
- Study Need and Goal
- Steering Committee
- The Process We Followed/Timeline
- Strategy Packages Considered
- Performance (2035)
 - Network-Wide Measures of Performance
 - Environmental (Resource Impacts)
 - Transportation
 - Costs
- Recommendations endorsed by Steering Committee and CIRC Alts Task Force
 - Preferred Strategy Package & Scoping Studies
 - Congestion Policy

Study Area



Study Need and Goal

- An integrated transportation planning study is needed to address multimodal mobility and safety issues within the former Circ EIS area
- The study will produce a comprehensive and coordinated list of highway, transit, bicycle and pedestrian, and land use recommendations that satisfy an overall vision for the area
- Key Foundations:
 - Act 34 -The Complete Streets bill: Transportation projects should consider the needs of all users
 - The study will follow a “Corridor Management” planning process

Steering Committee

Tim Baechle, Manager of Energy, Environmental, IBM Burlington

Amy Bell, CCMPO Planning Coord., VTrans

Ken Belliveau, Planning Director and Zoning Administrator, Town of Williston

Meredith Birkett, Planning Manager, CCTA

Bruce Hoar, DPW Director, Town of Williston

Chris Jolly, Planning & Programming Eng., FHWA

Sandy Levine, Senior Attorney, Conservation Law Foundation

David Libby, Facilities Manager, IBM Burlington

Dennis Lutz, DPW Director, Town of Essex

Rick McGuire, Town Manager, Town of Williston

Jeff Nick, JL Davis Realty

Bruce Nyquist, Traffic & Safety Eng., VTrans

Robin Pierce, Development Director, Village of Essex Junction

Ken Robie, CIRC Project Manager, VTrans

Kate McCarthy, Sustainable Communities Program Director, VNRC

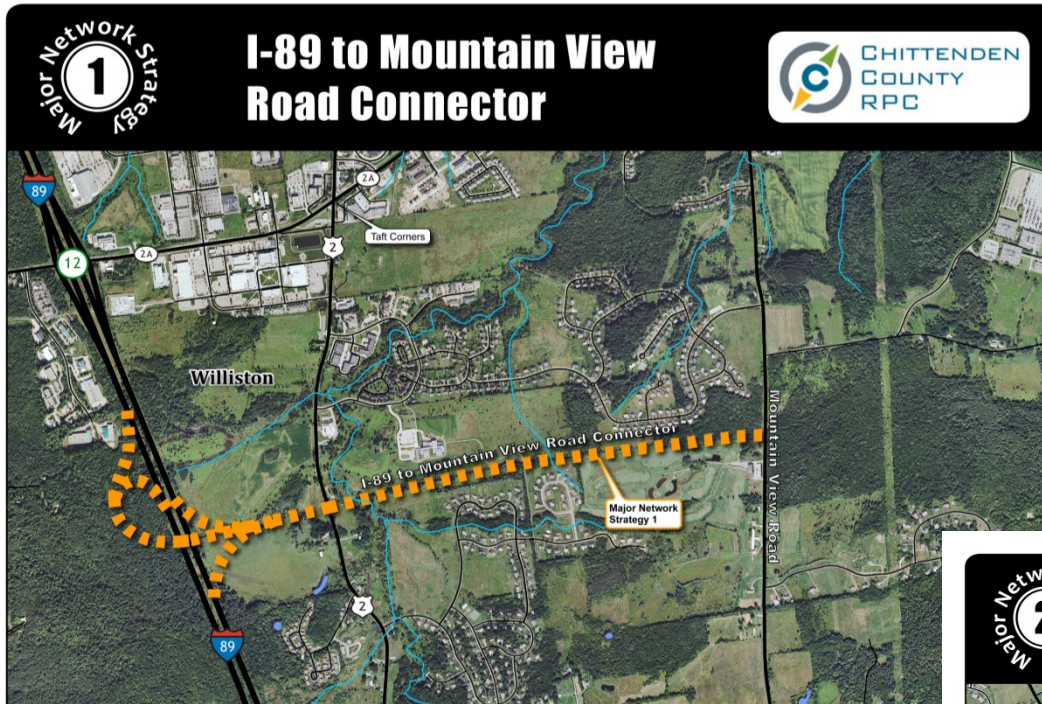
Jason VanDriesche, Dir. of Advocacy & Education, Local Motion

Brian Wright, , Chittenden Solid Waste Management District

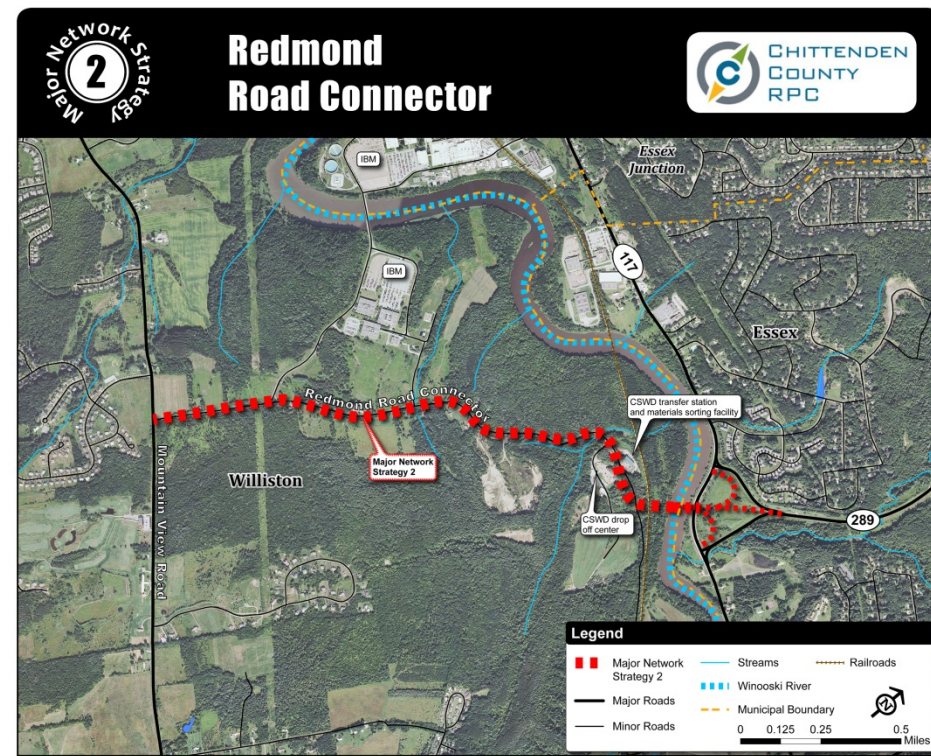
The Process We Followed

- Phase 1: Evaluation of two major network strategies (April - June, 2012)
- Phase 2: Analysis of existing and future conditions (June - Sept, 2012)
 - development of network goals and objectives
 - development of performance measures
 - development of traffic microsimulation model
- Phase 3: Develop and evaluate strategies (Sept 2012 - Jan 2013)
 - evaluation of viable strategies (2015)
 - evaluation of strategy packages (2035)
- Phase 4: Implementation Plan for Transportation Corridors (Feb 2013)
- Phase 5: Develop Transportation Management Plan (March 2013)

Phase 1 - Review of 2 Major Network Strategies



Williston and Essex Selectboards Voted to Advance MNS2 to Subsequent Phases of Study (6-17-12)



Strategy Packages Considered

Initial Strategy Packages:

- Core Improvements - *included in all packages*
- Major Network Strategy 2 (new bridge)
- Spot Intersection Improvements
- New Street Connections
- VT2A Mainline Capacity Expansion - *targeted expansion*
- North Williston Road Capacity Expansion - *eliminated*

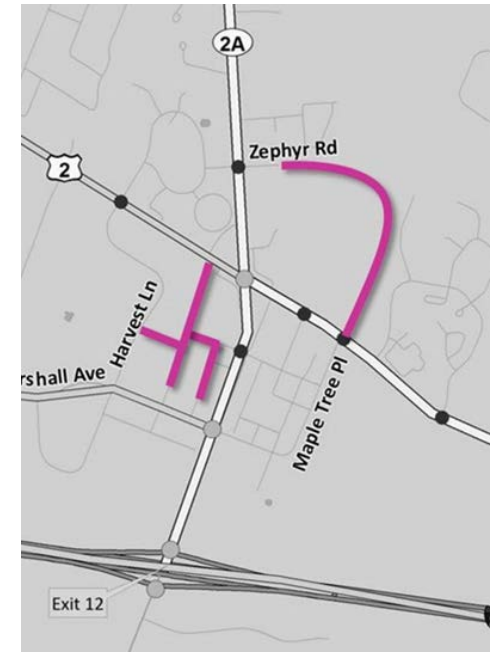
Strategy packages were combined and analyzed

Final Hybrid Strategies Packages (HSP):

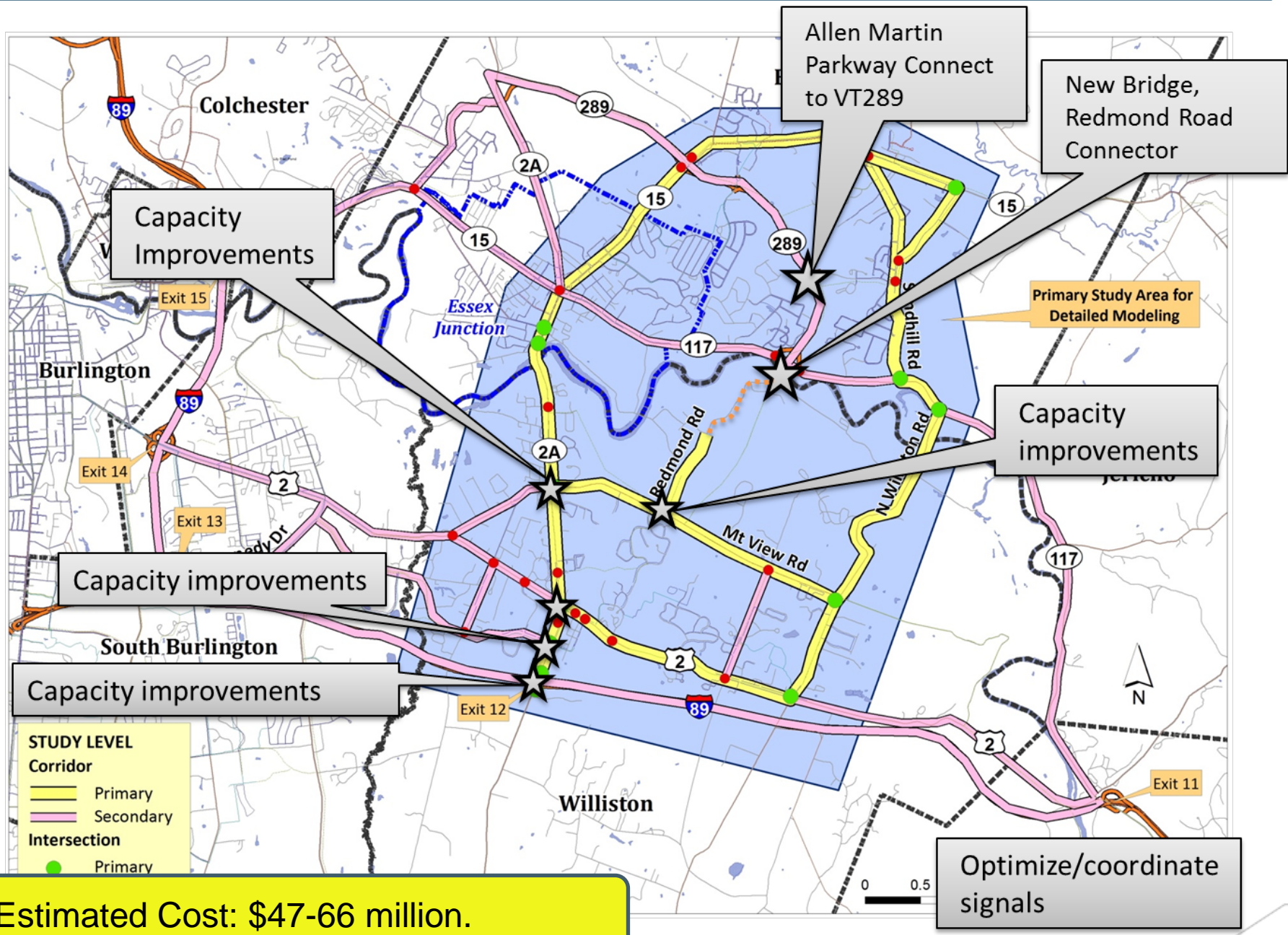
- HSP1: New bridge over the Winooski + Capacity Improvements at Exit 12 and other Intersections + Core Improvements
- HSP2: Reconfiguration of Exit 12 + New Local Roads + Capacity Improvements at Intersections and VT2A + Core Improvements

Core Improvements (included in all scenarios)

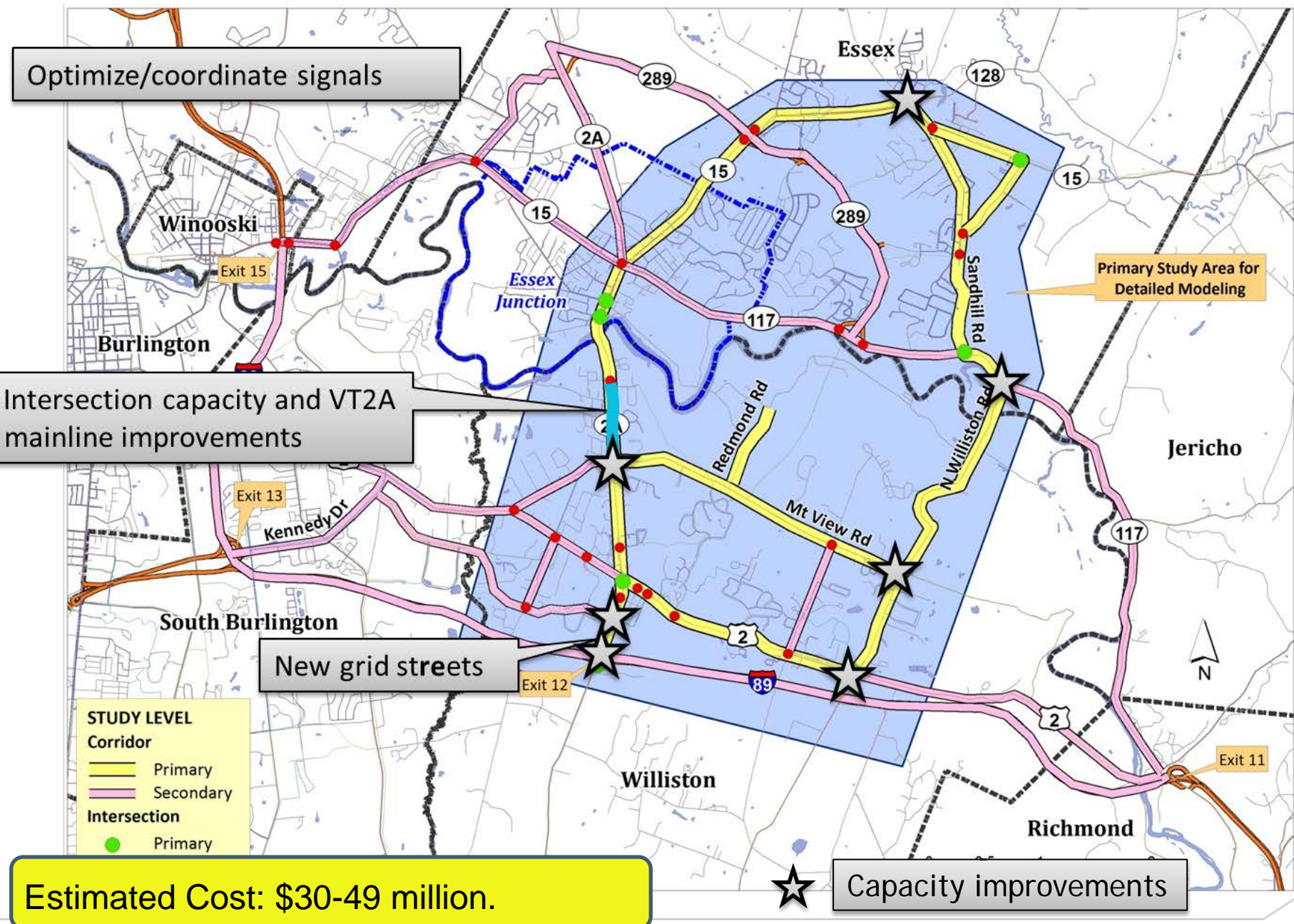
- Williston Grid Streets
- Essex Town Center Connections
- CIRC Alt Phase 1 Implementation Projects *in WENTS Area*:
 - Crescent Connector in Essex Junction
 - VT2A/James Brown Drive Improvements
 - Travel Demand Management Initiatives & Adaptive Signal Control
- CIRC Alt Phase 2 Implementation Projects *in WENTS Area*
 - VT15/Sand Hill Road Improvements
 - VT15 Improvements, Post Office Square to 5 Corners
 - VT15 Multiuse Path
 - US 2/Trader Lane Intersection Capacity Improvements
 - Travel Demand Management Initiatives & Adaptive Signal Control
- Address discontinuities and deficiencies to sidewalks, multiuse paths, shoulders
- Transit Service
 - Add weekday mid-day trip on the Williston Route
 - Weekday peak hour Jeffersonville to Burlington commuter route



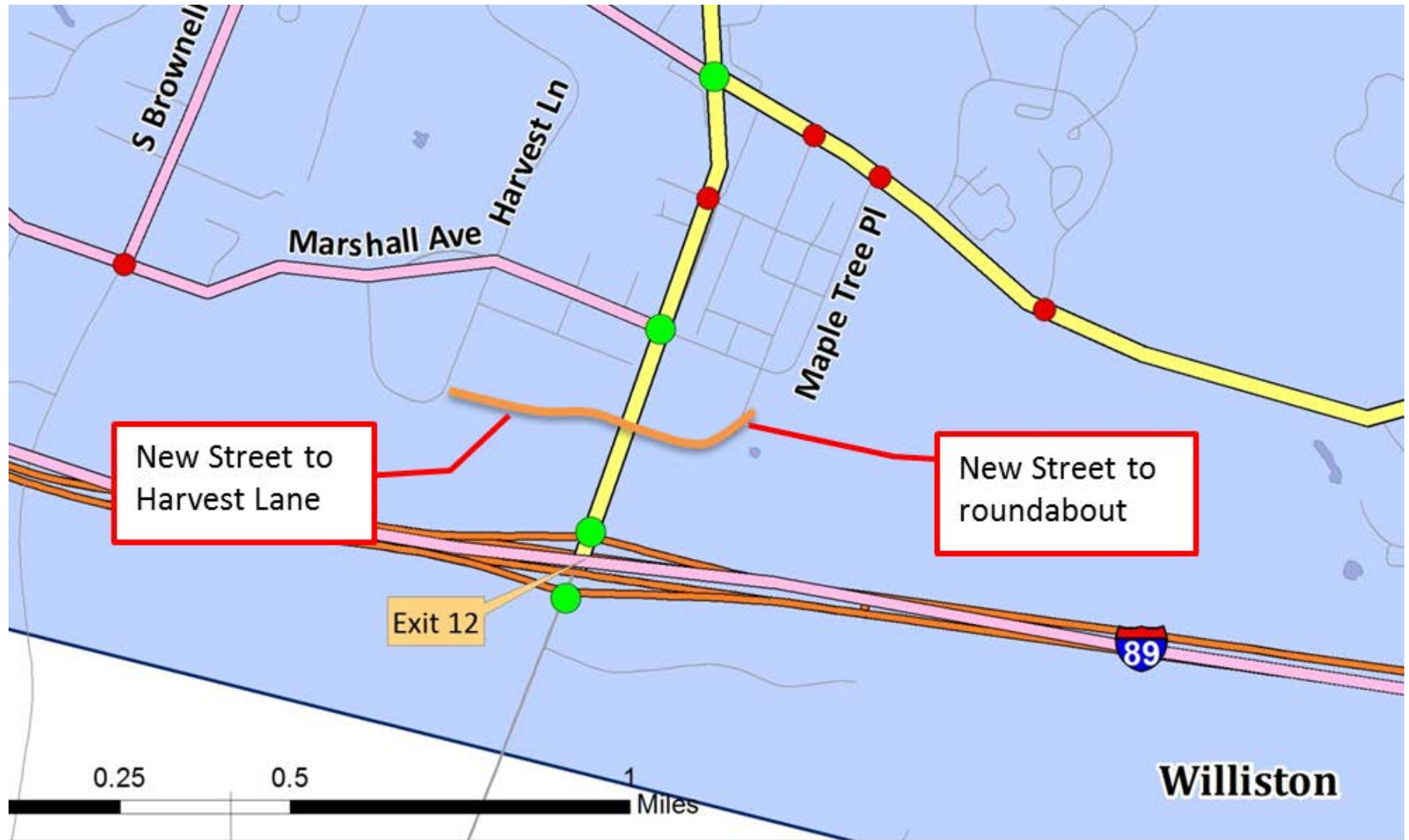
HSP1 - New Bridge and Related Improvements



HSP2- Reconfigured Exit 12 and Related Improvements

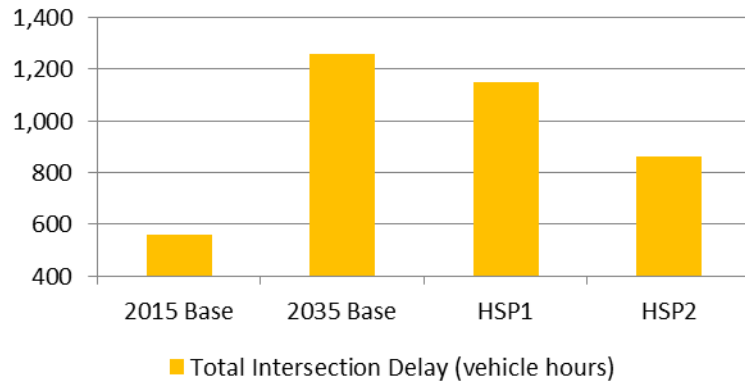


New Streets in HSP2 (combined with Exit 12 reconfiguration)

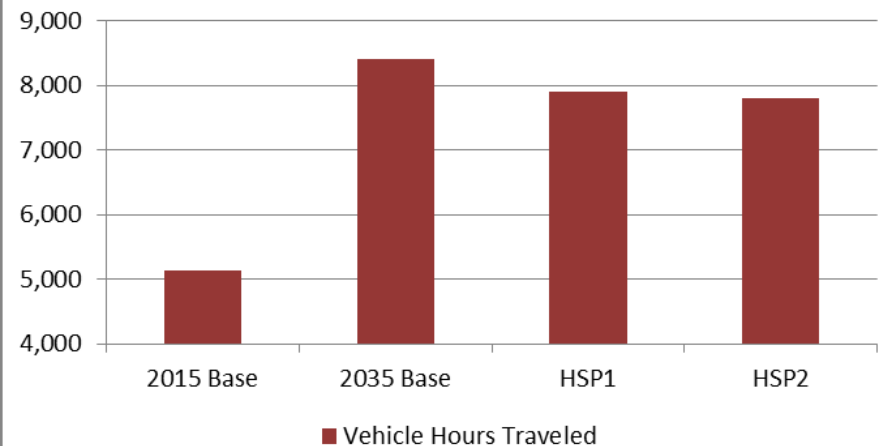


Network-Wide Performance Measures

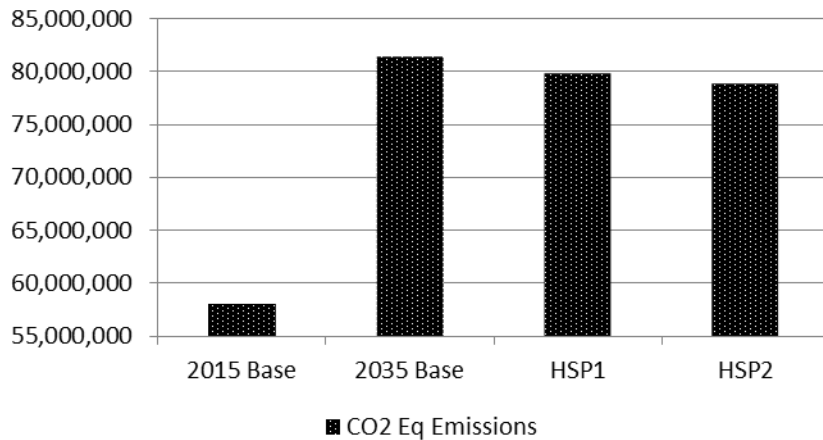
Total Intersection Delay (vehicle hours)



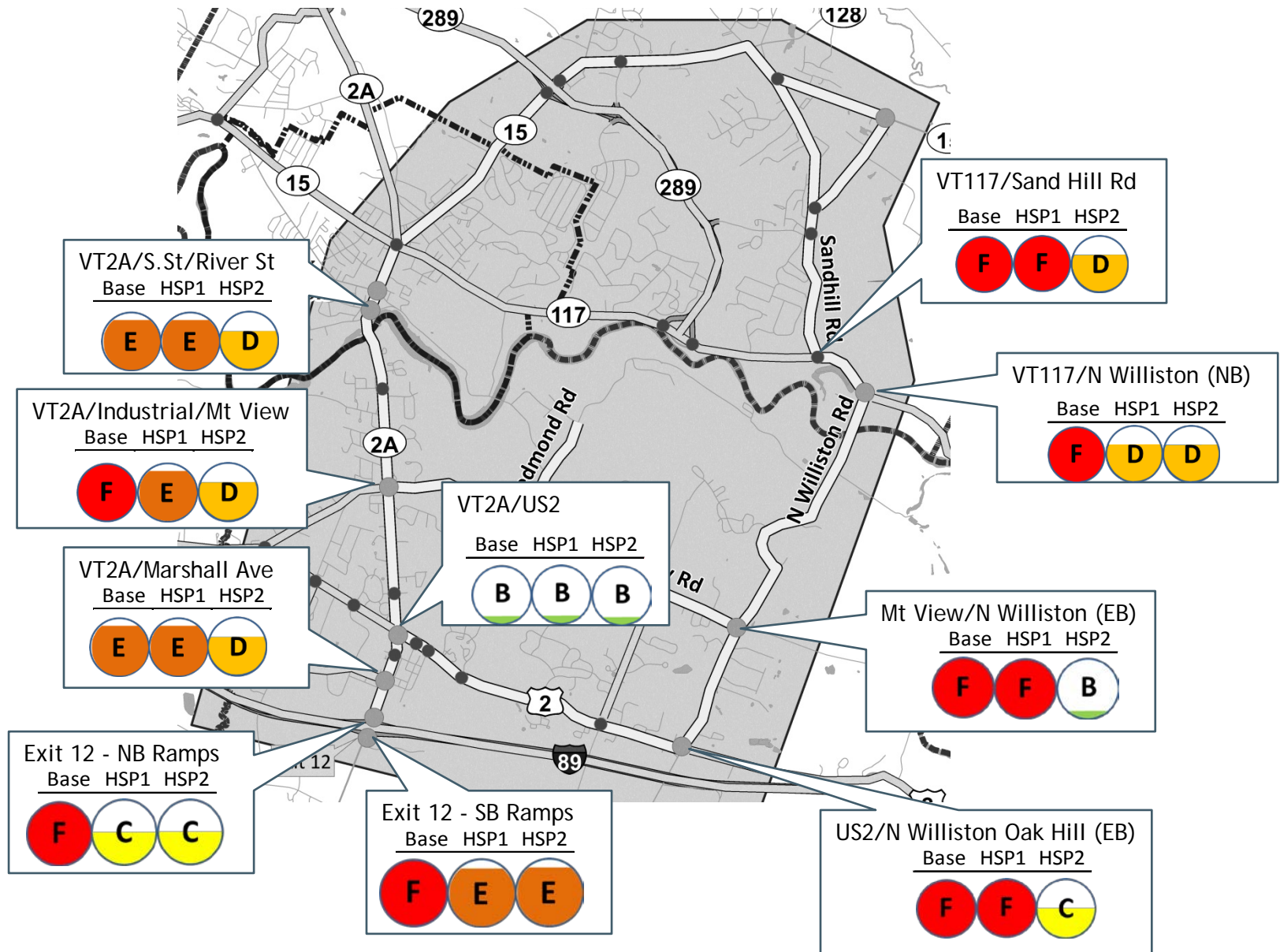
Vehicle Hours Traveled



CO2 Eq Emissions (metric tons)

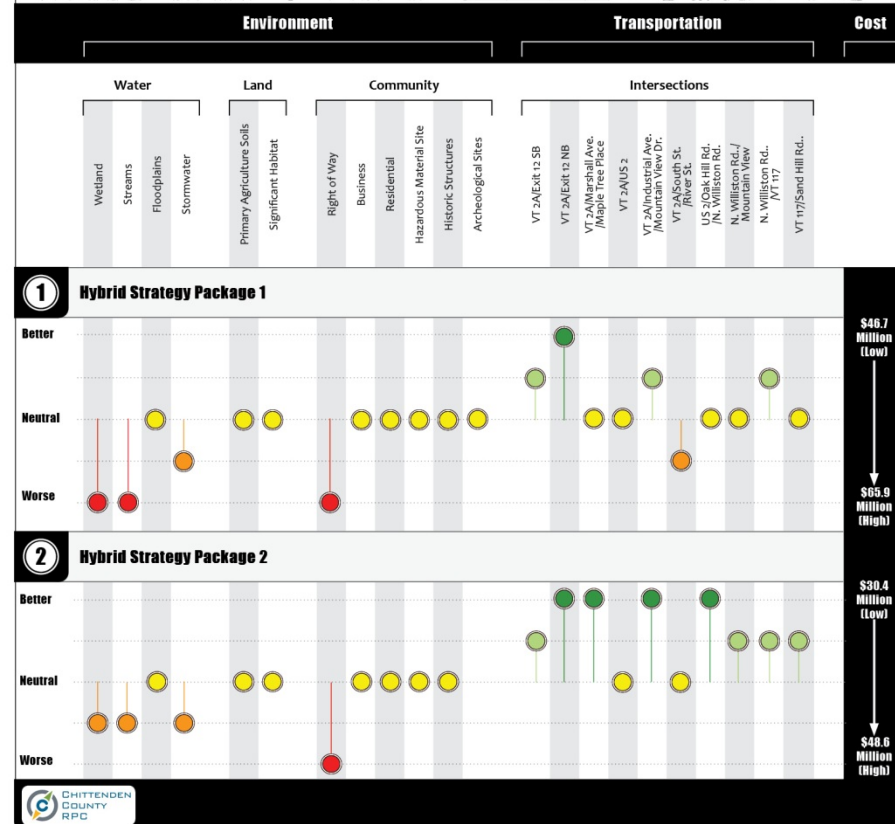
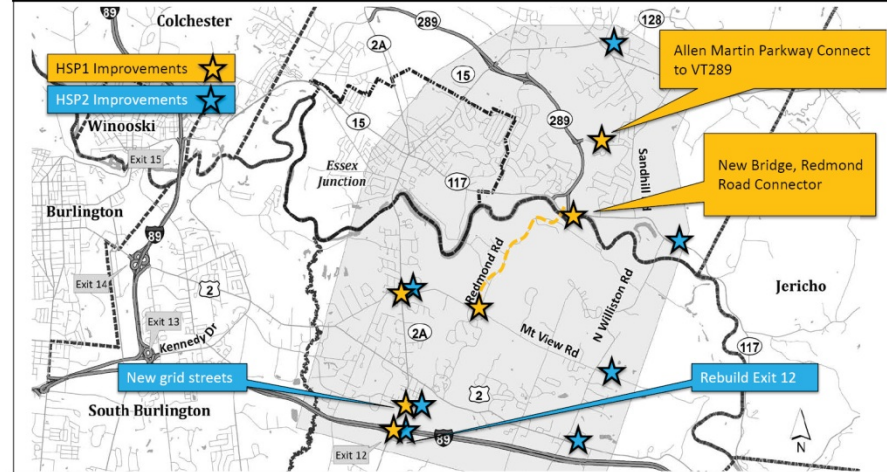


2035 PM Peak Traffic Performance in the Study Area



HSP1 and HSP2 Results: Environmental- Transportation-Costs

Hybrid Strategy Package 1 and 2



Review of Cost Estimates

- WENTS Core Improvements: \$17 million
- Hybrid Strategy Package 1: \$47 to 66 million
- Hybrid Strategy Package 2: \$30 to 49 million

- The WENTS Steering Committee (SC) endorsed HSP2 as the preferred strategy package for the study area.
- WENTS SC and CIRC Alts Task Force endorsed the adoption of a *New Statewide Congestion Policy* that redefines the allowable congestion and mitigation measures for *Areas Targeted for Growth* as identified in the Regional Plan.

Scoping Studies endorsed by WENTS SC and the CIRC Alternatives Task Force:

- Exit 12/Grid Streets (HSP2) - *February 2013*
- VT2A/Mountain View/Industrial Ave & VT2A mainline north to James Brown Drive (HSP2) - *February 2013*
- VT 117/North Williston Road Intersection & Flooding Issues (HSP2) - *February 2013*
- US 2 - Taft Corners to Williston Village Multimodal Improvements (Core) - *February 2013*

Bike & Pedestrian Scoping Studies endorsed by WENTS SC and the CIRC Alternatives Task Force:

- Industrial Avenue to Blair Park (inclusive of crossing over Allen Brook) - *FY 14*
- VT 15 - Old Stage Road to Essex Way - *FY 14*
- Mountain View Road from Old Stage Road to VT 2A - *FY 14*

- Development of Network Implementation Plan (Feb 2013)
 - Additional Investigations
 - Permit Requirements
 - Refinement of Cost Estimates and Timeline
 - Definition of Scoping Study Elements
- Draft & Final Report (March/April 2013)

Thank you
Questions and Comments