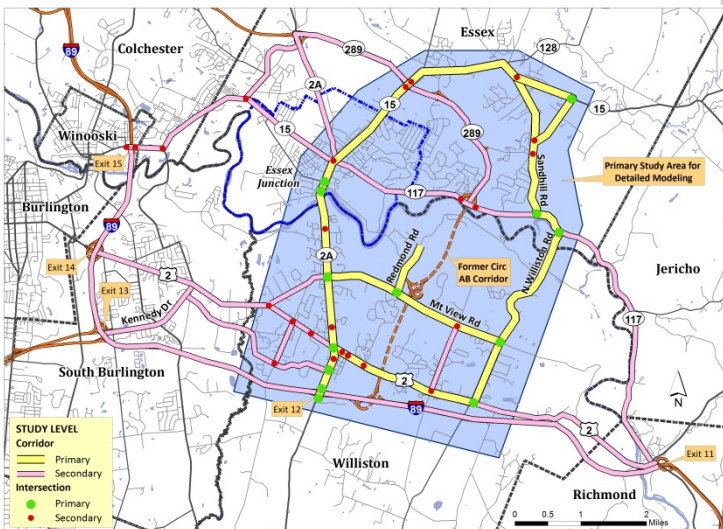




Williston-Essex Network Transportation Study

Steering Committee Meeting #3

Existing Transportation Conditions, Performance Measures Goals & Objectives



July 30, 2012

Presentation Overview

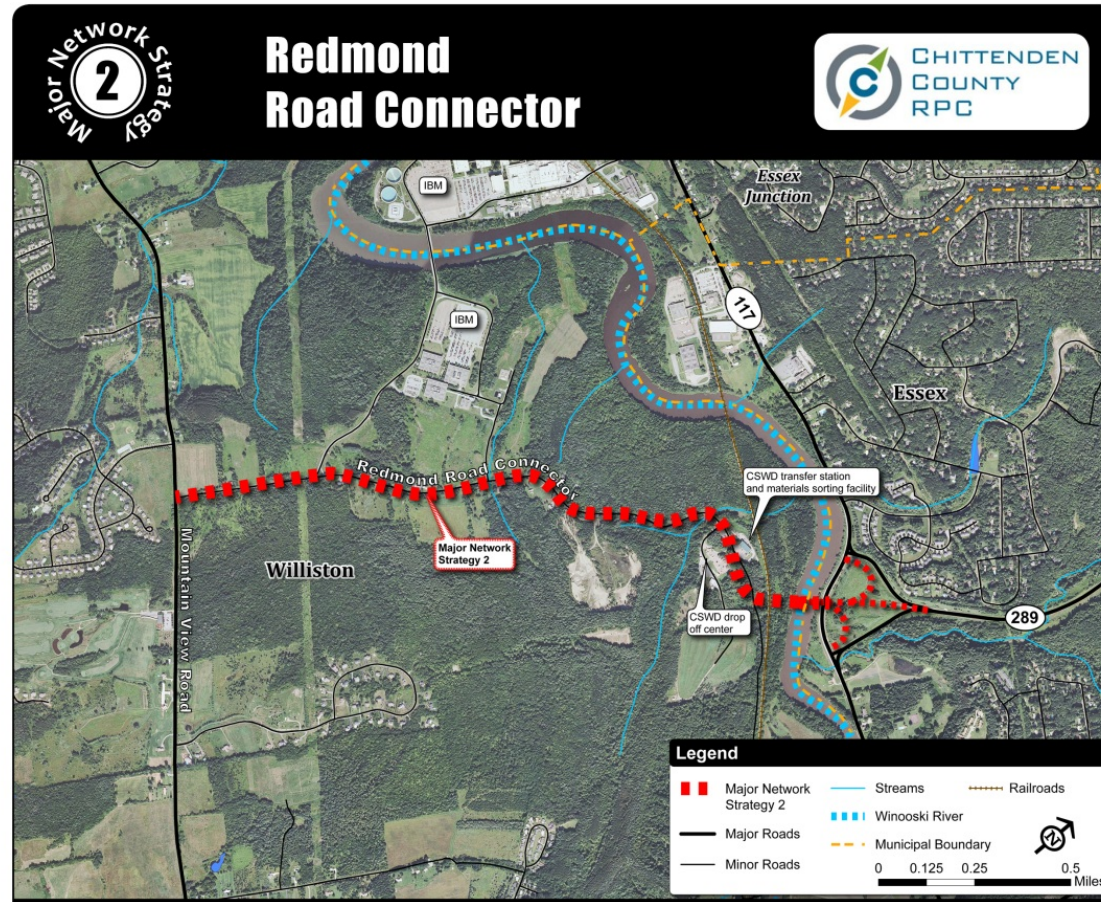
- Purpose of this Meeting
- Project Status
- Phase 2 Memorandum #1 on Existing Land Use & Transportation Conditions
- Recommended Performance Measures
- Discussion - Primary Corridor and Network-Wide Goals and Objectives
- Next Steps-Development of Strategy Packages (Discussion)

Purpose of the Meeting

- Review Project Status
- Discuss Phase 2 Memo #1 on Existing Conditions
- Recommend/Discuss Performance Measures
- Goals & Objectives - Initial Discussion
- Network Strategies - Initial Discussion

Review Project Status

- Phase 1: Evaluation of two major network strategies
 - 3 Selectboard Meetings, 1 Public Meeting
- Phase 2: Analysis of Existing and Future Issues; Development of Transportation Network Goals
 - Task 1: Analysis of existing conditions; development of performance measures;
 - Task 2: Establish goals and objectives
 - Task 3: Future year performance
- Phase 3: Develop and evaluate strategies
- Phase 4: Develop Implementation Plan for Transportation Corridors
- Phase 5: Develop Transportation Management Plan



Williston and Essex Selectboards Voted to Advance MNS2 to Subsequent Phases of Study

This Vote Means that MNS 2 will be Considered and Evaluated Among Other Strategies But Does Not Guarantee it Will Be a Preferred Strategy

Phase 2 Memorandum on Existing Conditions

- DRAFT—Comments accepted until August 10.
- Sections Addressed in Current Draft:
 - Land Use
 - Access Management
 - Safety
 - Alternative Modes - transit, bicycle, pedestrian
- Final memo will include traffic assessment from calibrated microsimulation model
 - Demonstration of model

Performance Measures

- Used to Compare Existing Conditions Against...

- Future Conditions with No Improvements
- Future Conditions with Alternative Strategy Packages

- Multimodal Performance Measures

- Auto Mobility and Safety

- Average vehicle speed
 - Corridor travel time
 - Intersection delay (LOS, v/c)
 - Average vehicle queues
 - Change in crash modification factors

- Multimodal LOS

- Bicycle (facilities, connectivity, conflicts)
 - Transit (accessibility, service/headway, connectivity)
 - Pedestrian (facilities, connectivity)

- System-Wide Measures

- VMT
 - GHG Emissions
 - Cumulative Intersection Stop Delay

Recommended Process for Establishing Goals and Objectives

- Begin with Municipal Land Use Visions/Goals
- Define Transportation Goals/Objectives for Each Primary Corridor to Support Land Use Visions
- Submit Draft Goals/Objectives to Steering Committee for Comment, Approval at Next Meeting

	Corridor Section	from	to
Primary Corridors	VT 2A	I-89 Exit 12	Beaudry Lane
	VT 2A	Beaudry Lane	River St./South Street
	US 2	VT 2A	Old Stage Rd.
	Mountain View Drive	VT 2A	N. Williston Rd.
	Redmond Road	Mountain View Drive	IBM Entrance North
	Sand Hill Rd.	VT 117	VT 15
	Allen Martin Dr.	VT 15	Sand Hill Rd.
	N. Williston Road & VT 117	US 2	VT 117-Sand Hill Rd.
	VT 15	Sand Hill Rd.	Brickyard Rd.
Village Centers	US 2 (V)	Old Stage Rd.	N. Williston Rd./Oak Hill Rd.
	VT2A (V) & VT15 (V)	River St./South St.	Brickyard Rd.

Example: Goals for VT 2A

- Excerpts from Williston Comprehensive Plan (2006):
 - Concentrate high intensity development to the Growth Center.
 - Permit density of use to foster a design-conscious, mixed use, pedestrian friendly center around Taft Corners.
 - Encourage use of mass transit and non-motorized modes of transportation.
- Essex Junction Comprehensive Plan (in development)
 - Significant expansion plans for IBM, Champlain Valley Technology and Innovation Park

Primary Corridor

VT 2A

Goals

Efficient north-south vehicle mobility to/from Exit 12.
Promotion of Growth Center goals through multimodal investments.
Facilitate goods movement.
Address known vehicle and pedestrian/bicycle safety deficiencies.

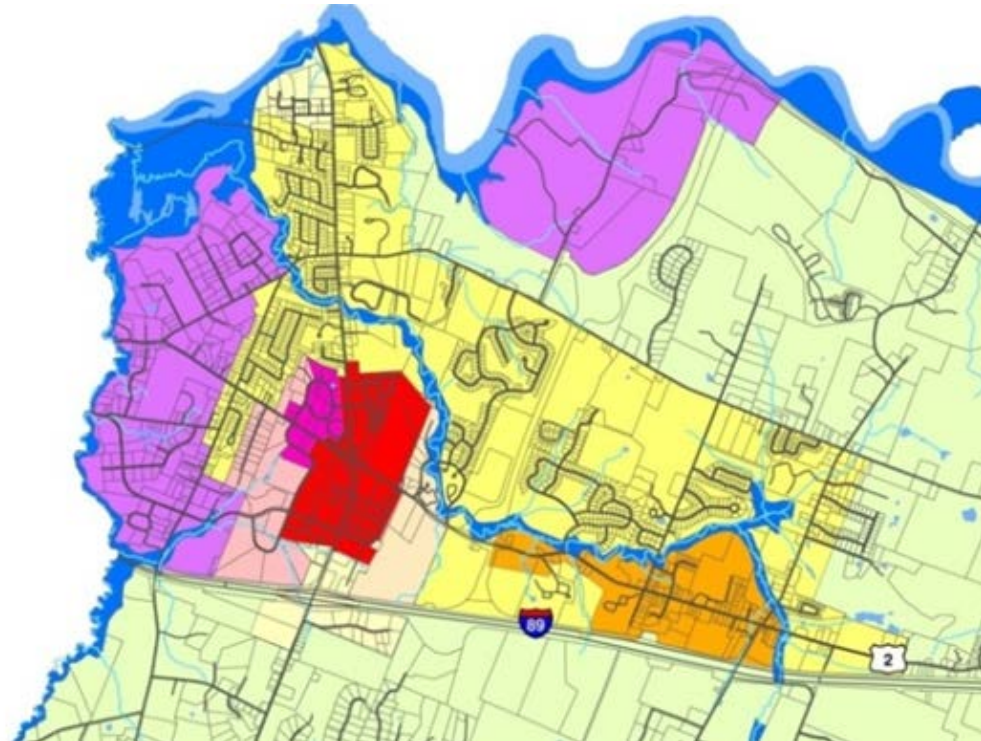
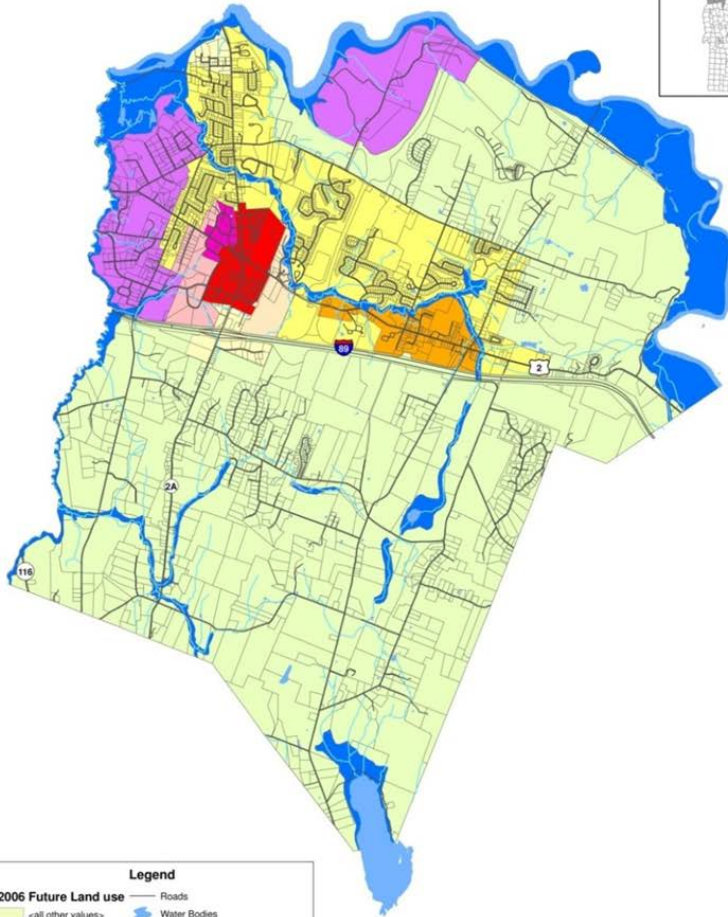
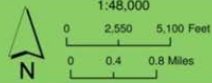
Next Steps

- **Phase 2 Draft Final Report (mid-Sept)**
 - Study Area and Primary Corridor Goals & Objectives
 - Calibrated Traffic Model
 - Existing and Future Conditions Evaluated Subject to Performance Measures
- **Steering Committee Meeting #4 (late Sept)**
 - Review Phase 2 Draft Final Report
 - Discuss Strategy Packages
- **Development of Alternative Strategy Packages (Oct)**
- **Screening and Evaluation of Strategy Packages (Nov/Dec)**
- **Development of Network Implementation Plan (Jan)**

Additional Slides

Town Comprehensive Plan Maps - Williston

Williston 2011 Comprehensive Plan
Map 1 - 2006 Future Land Use



Town Comprehensive Plan Maps - Essex

