

# Chittenden County Municipal Legislative Breakfast

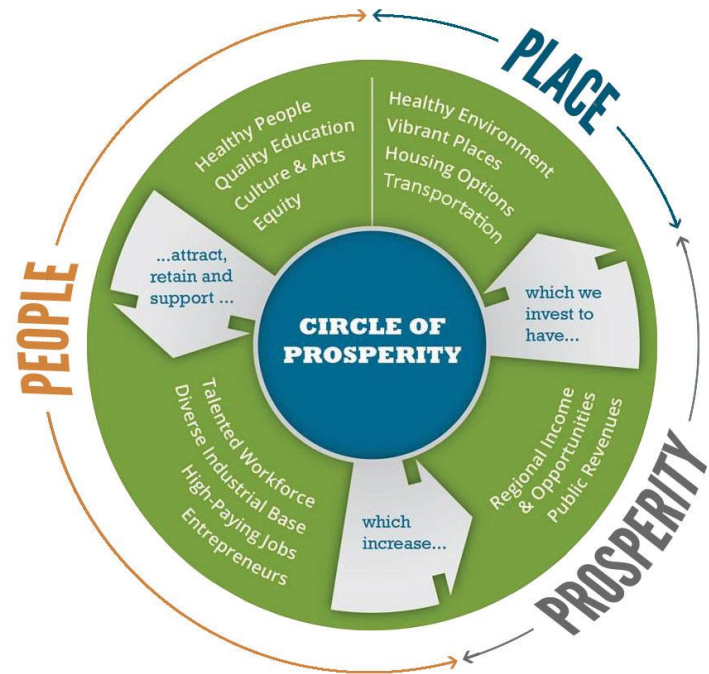
## December 12, 2017

### **Agenda & Program**

- 7:30 Registration, breakfast, and networking
- 8:15 Welcome – Chris Roy, CCRPC Chair
- 8:20 Introductions
- 8:25 Key Issues – Charlie Baker, CCRPC Executive Director
- 8:50 Discussion/other items
- 9:00 Adjourn

# Implementing our ECOS Plan

- Circle of Prosperity
- Continued investment in Chittenden County/NWVT is critical to further the financial health of Vermont's economy and government expenditures to support the social safety net, environmental protection, and public services.



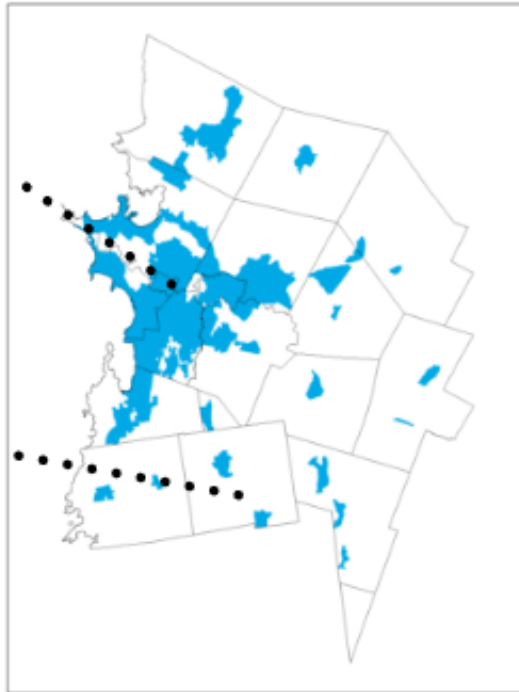
# Smart Growth

## Homes Built in Chittenden County 2012-2016

5-Year Average for New Units

 **85%**  
In areas planned for growth

 **15%**  
In rural areas



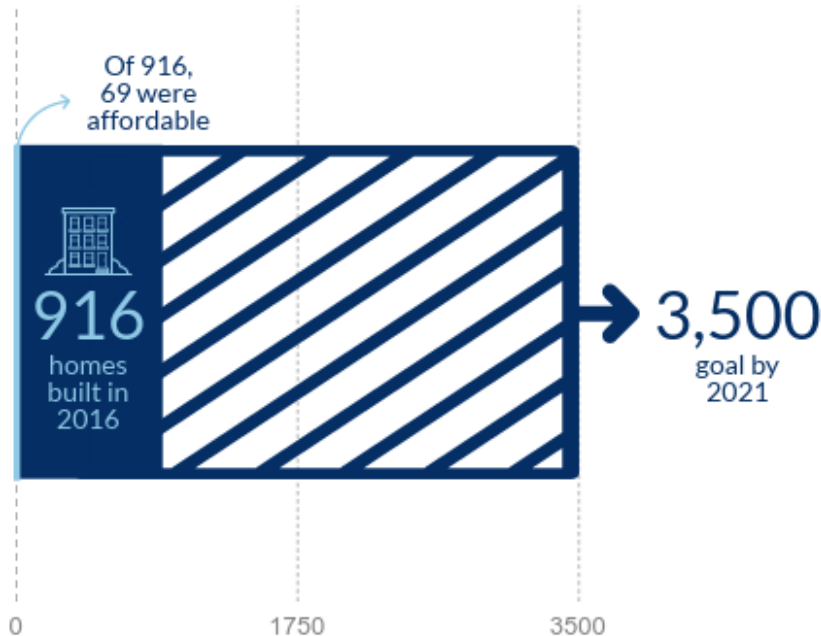
### 2016 Smart Growth Result

- For the fourth year in a row, Chittenden County has exceeded its [ECOS Plan goal](#) of 80% of development occurring within planned growth areas.
  - Of the total 916 residential units built in Chittenden County, 89% (815) were in areas planned for growth.
- *Improvements to the permitting system:  
Commission on Act 250*



# Building Homes Together

A campaign to strengthen Chittenden County communities



Together with Housing Vermont and Champlain Housing Trust, CCRPC launched the [Building Homes Together](#) campaign in 2016 to increase housing supply in Chittenden County to 700 new homes each year with 20% being permanently affordable.

- *Investments in affordable housing:  
Housing Bond & VHCB*

Note: Homes are permanently affordable to households earning 60% or < of the AMI for rental (\$39,600 income for a 2-person household) and 100% or < of the AMI for homeownership (\$66,000 income for a 2-person household).

# Chittenden Co/NWVT support for Vermont's Economy

## Key Issues from GBIC:

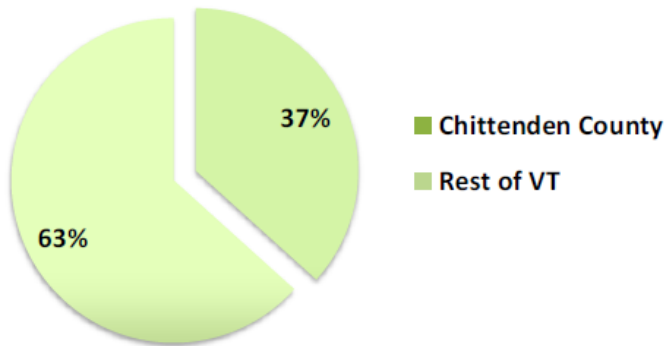
- Even at a time where capital is cheap, businesses do not appear to be engaging in 'sticks & bricks' growth, very little hiring - only one VEGI application in the last 20 months.
- It is critical that we continue to invest in workforce development and incentivize growth. If we aren't growing in Chittenden County/NWVT that is bad news for the whole State.
- Costs of living and doing business continue to restrict our potential: housing affordability, electric rates, and lack of population growth create challenges across industry sectors.
- Addiction and poverty are acute economic issues faced by too many Vermonters. With our demographics continuing to trend older, we risk losing a significant population of workforce participation with diminishing social outcomes.

# Chittenden Co/NWVT support for Vermont's Economy

- There is a great sense of responsibility here to keep the economic engine growing.
- Some data follows. Let us know if you would like additional data.

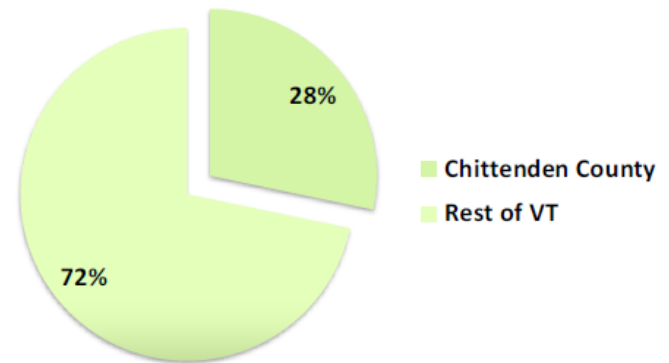
# Chittenden County Tax Contribution

Personal Income Tax Contribution - 2014



- Chittenden County contributed \$238,657,196 in personal income taxes

Retail & Use Tax Contribution - 2015

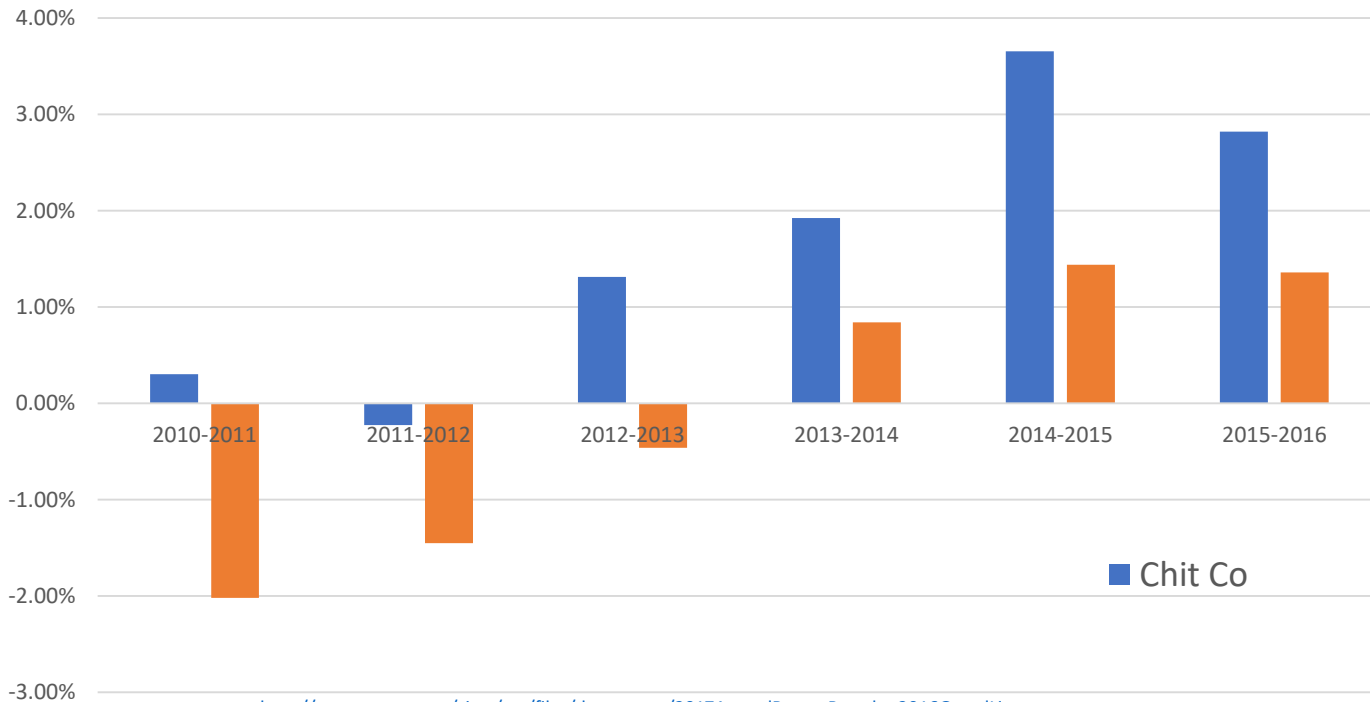


- Vermont collected \$4,328,884,375 in retail & use taxes, \$1,706,052,630 was contributed by Chittenden County



Update with correct data.  
Sales is total, not tax

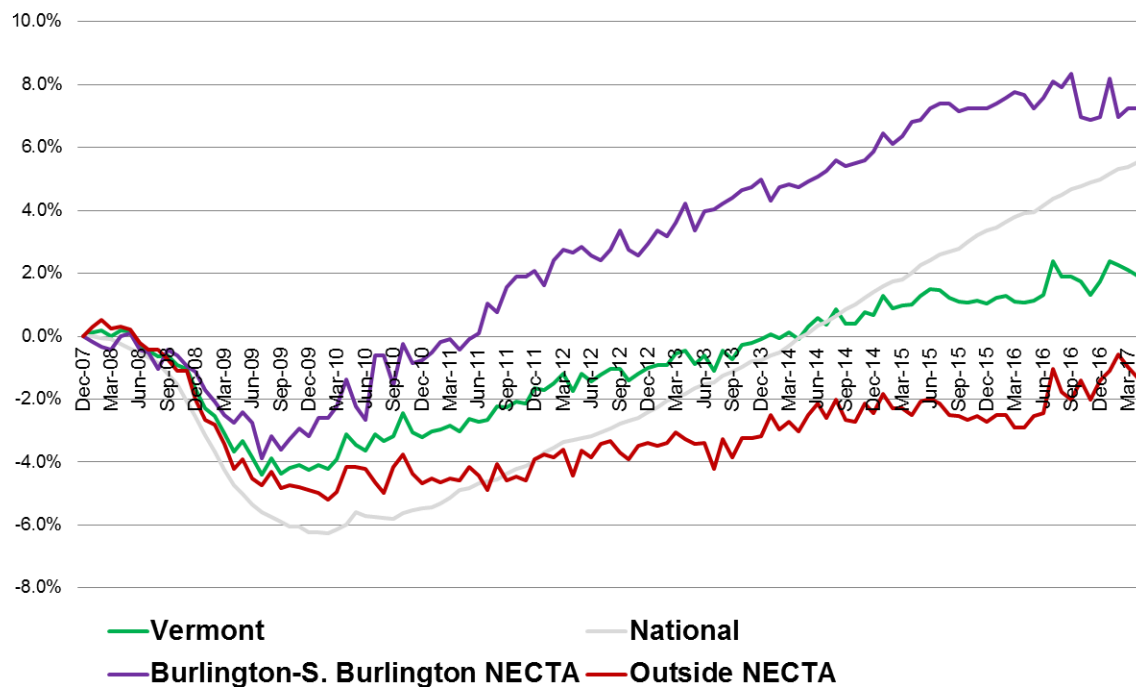
## Percent Change in Total Equalized Education Grand List Value



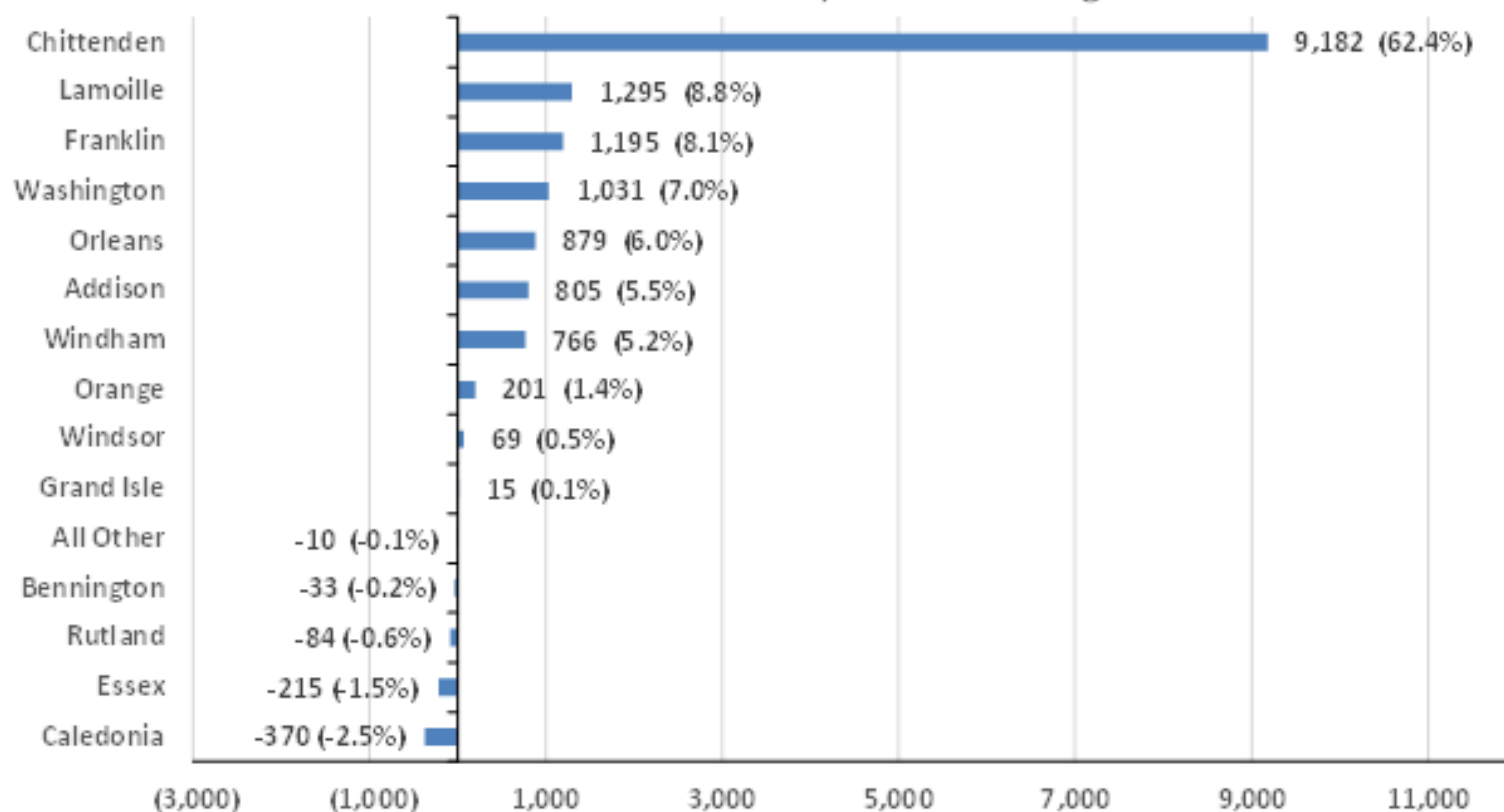
<http://tax.vermont.gov/sites/tax/files/documents/2017AnnualReportBasedon2016GrandList-FINAL.pdf>

# Sub-State Employment Changes

2007 Recession  
% Change in Jobs & Duration in Months:  
United States and Vermont  
Total Nonfarm Jobs



## Change in Total Payroll Jobs by County 2009-2015, with Percent of Total Statewide Payroll Job Change



Notes: 'All Other' consists of all employers not assigned to a specific location for various reasons.

# Workforce Investment

➤ ***Implement Vermont State Workforce Development Board recommendations:***

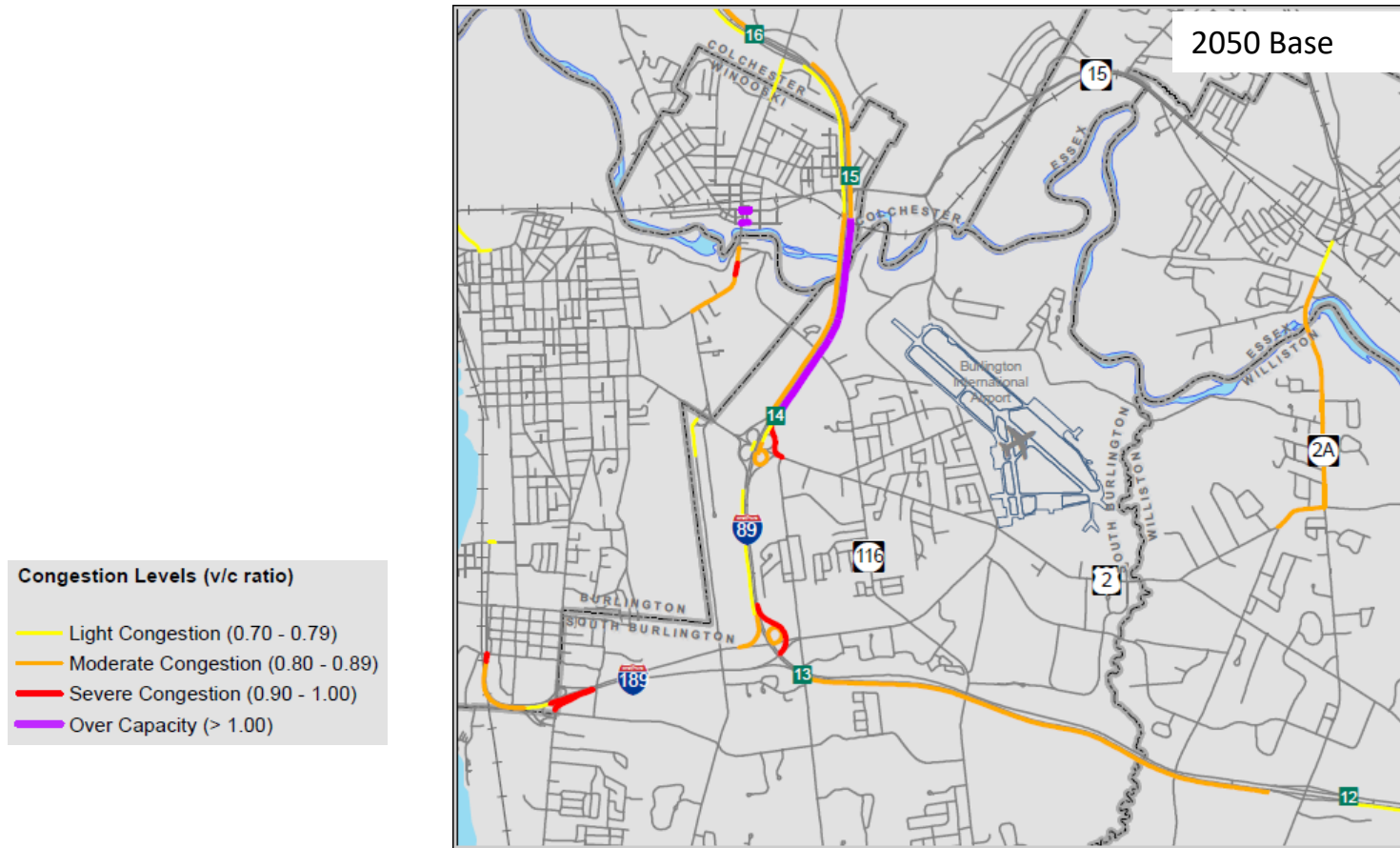
- Pre-K
- ECHO Stem Initiative
- Continuing Technical Education
- Career Pathway Program
- Talent Pipeline Management Program
- Skill Training Programs

# Transportation Investment

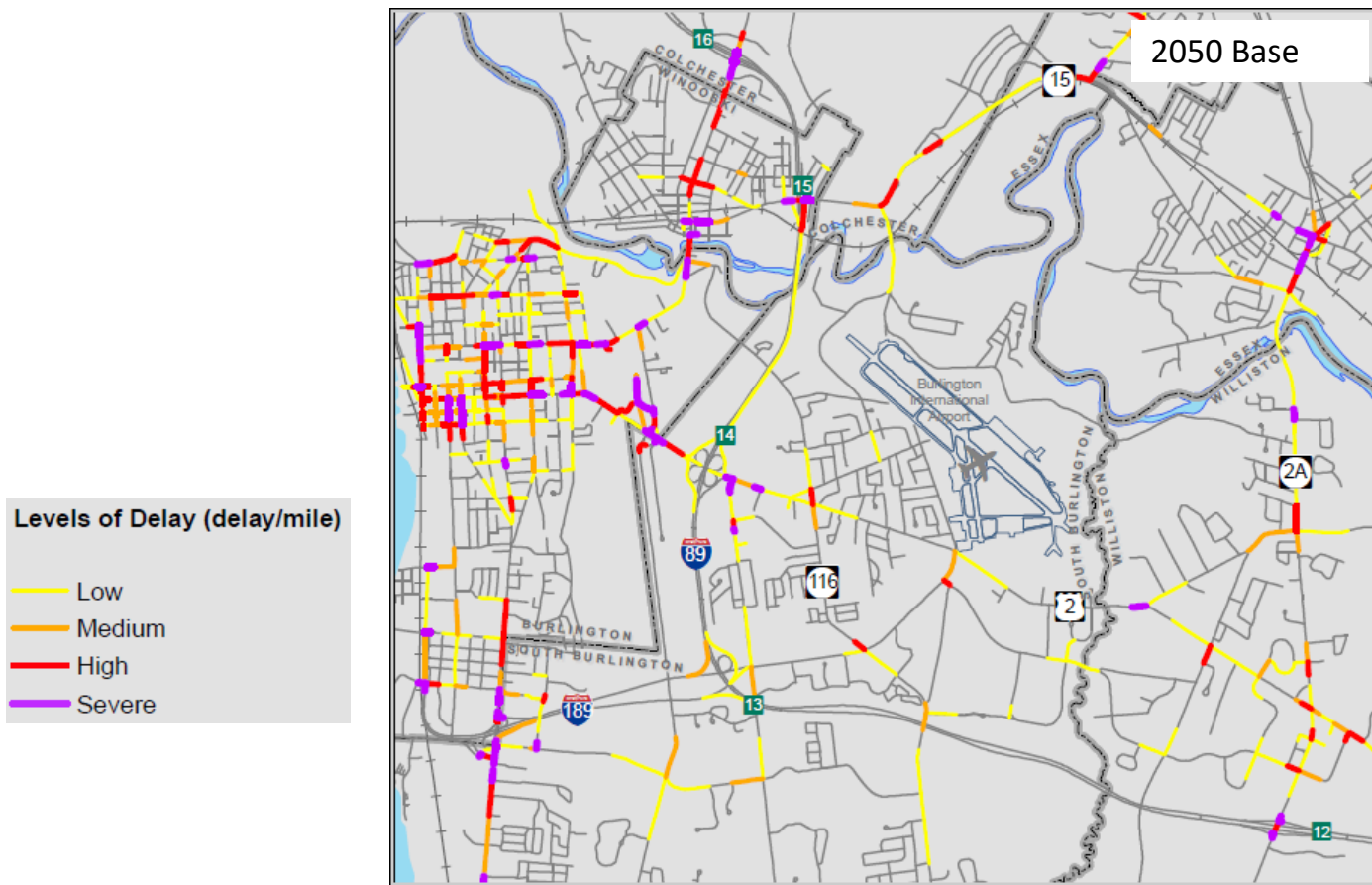
## 2018 Metropolitan Transportation Plan

- Analyzed 9 future scenarios
- 25% increase in traffic from 2015 to 2050
- 70% goes towards preservation
- Investments to improve smart growth land use, mode share, safety, and spot congestion
- *\$420 million in Modernization and Expansion projects:*
  - Water quality
  - Bike/ped
  - Transit
  - Safety
  - Technology (ITS) /intersection improvements
  - Complete streets

# Roadway Capacity



# Roadway Delay



# Water Quality Funding

- This is a critical issue for Chittenden Co. and Vermont
- Should have a state-wide perspective and not just focus on Lake Champlain.
- Keep the focus on making investments that have the “biggest bang for the buck.”
- *We need a major increase in **Project Development funding** (20-30% of total investments).*
- *Start working to develop the statewide funding mechanism.*

Note: Please keep in mind that any municipal costs that are not covered by the State will still be borne by taxpayers at the municipal level. 80% cost share is needed.

# REGIONAL PUBLIC SAFETY DISPATCH

in Chittenden County



- Benefits include:
    - Reduction of up to 71 seconds in call transfer;
    - safer for fire and rescue;
    - improve career opportunities for dispatchers;
    - provide improved dispatching (technology and mutual aid)
  - Great progress - Joint Survey Committee has developed a shared governance and funding model
  - Council/Selectboard action to put on Town Meeting Day ballot
  - If created, Council/Selectboard action needed to fund and staff the Chittenden County Public Safety Authority
- *Capital is needed for upfront costs, would incentivize*

# CCRPC Resources

- **ECOS Scorecard** | 90+ indicators tied to our ECOS Plan goals relating to people, place, and prosperity | <https://app.resultsscorecard.com/Scorecard/Embed/8502>
- **Our Communities** | A link to all of our municipalities; our current and past work with each; links to their websites; basic data | <https://www.ccrpcvt.org/our-communities/>
- **Current Transportation Projects** | Organized by topic | <https://www.ccrpcvt.org/our-work/transportation/current-projects/>
- **ECOS Map Viewer** | State, regional & municipal data layers | <http://map.ccrpcvt.org/ChittendenCountyVT>
- **Data** | Links to various transportation, socioeconomic, and geo data | <https://www.ccrpcvt.org/our-work/transportation/data>
- **Transportation Partner Support** | Local Motion, CATMA, CarShare VT, Neighbor Rides, GMT
- **Land Use** | Municipal plan, bylaw, and capital program assistance.

# CCRPC Current Work

This is only a snapshot of current CCRPC work; for more information view our 2017 Annual Report at [www.ccrpcvt.org/annual-reports](http://www.ccrpcvt.org/annual-reports)

- **Water Quality** | Completed road erosion inventories for all of our municipalities. Working with towns to prioritize and develop conceptual designs. Storm water master plans.
- **Bike/Ped Plan** | Approved the [Regional Bike/Pedestrian Plan](#) to for a comprehensive, connected, accessible and safe regional network for walking and biking.
- **Transportation Studies** | Corridor studies, scoping, safety, inventories.
- **Draft Energy Plan** | Regional analysis and policies with assistance for municipalities.
- **Draft CEDS** | Economic strategy in partnership with GBIC. SWOT analysis.
- **Draft MTP** | Metropolitan Transportation Plan. Prioritize preservation, safety, congestion, and transit/bike/walk projects with financial constraint. 9 scenarios analyzed.

# Thank you!

## Questions/Discussion?

Please contact us for any assistance:

Charlie Baker, Executive Director

[cbaker@ccrpcvt.org](mailto:cbaker@ccrpcvt.org)

802-735-3500 (cell)

802-846-4490 \*23 (office)

[www.ccrpcvt.org](http://www.ccrpcvt.org)

[www.ecosproject.com](http://www.ecosproject.com)