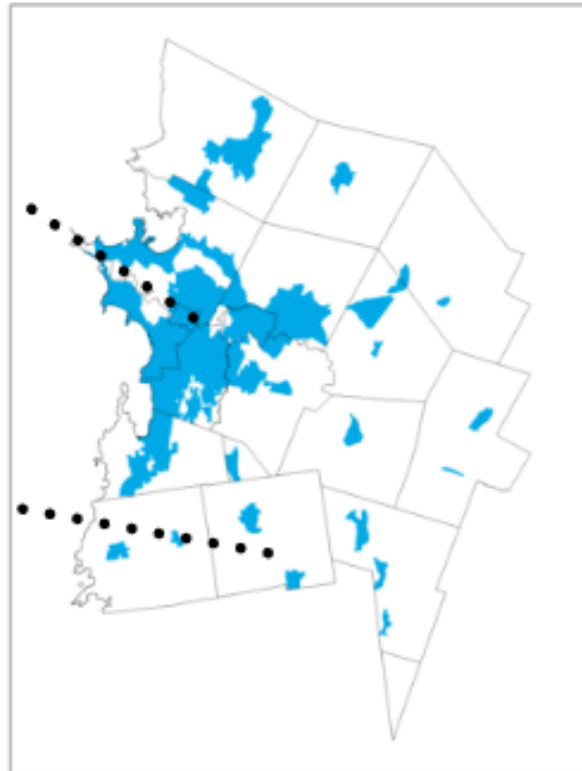


Smart Growth

Homes Built in Chittenden County 2012-2016

5-Year Average for New Units



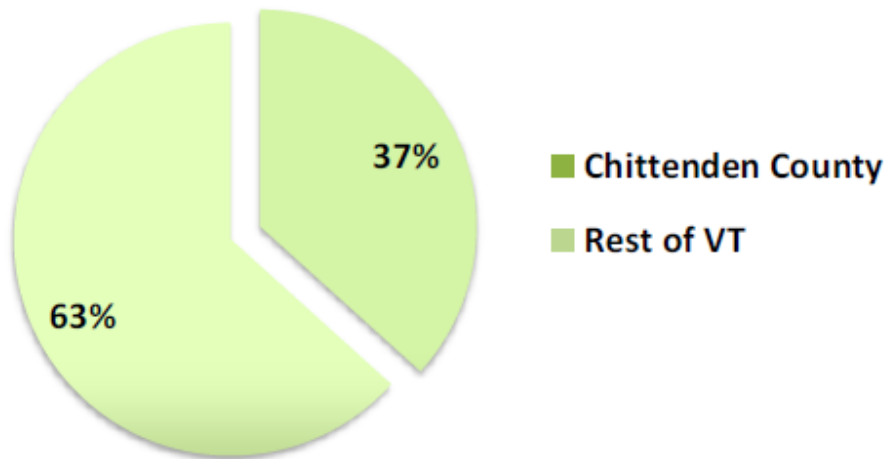
2016 Smart Growth Result

For the fourth year in a row, Chittenden County has exceeded its [ECOS Plan goal](#) of 80% of development occurring within planned growth areas.

In 2016, of the total 916 residential units built in Chittenden County, 89% (815) were in areas planned for growth.

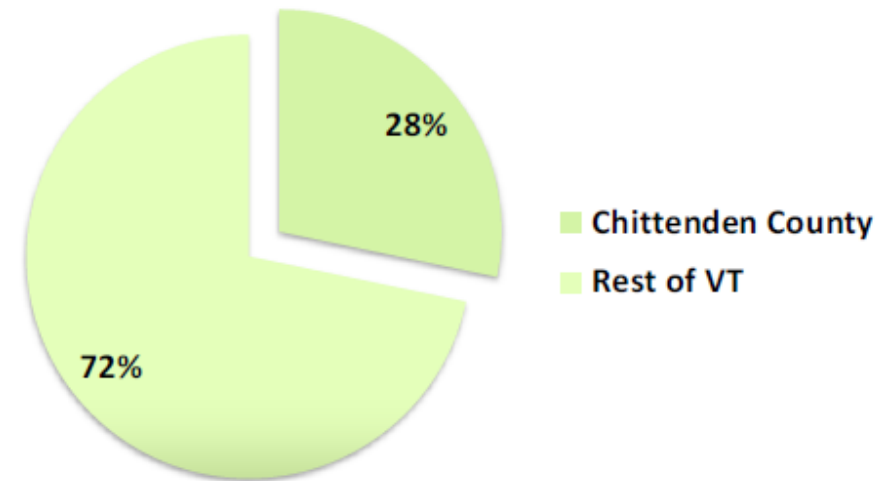
Chittenden County Tax Contribution

Personal Income Tax Contribution - 2014



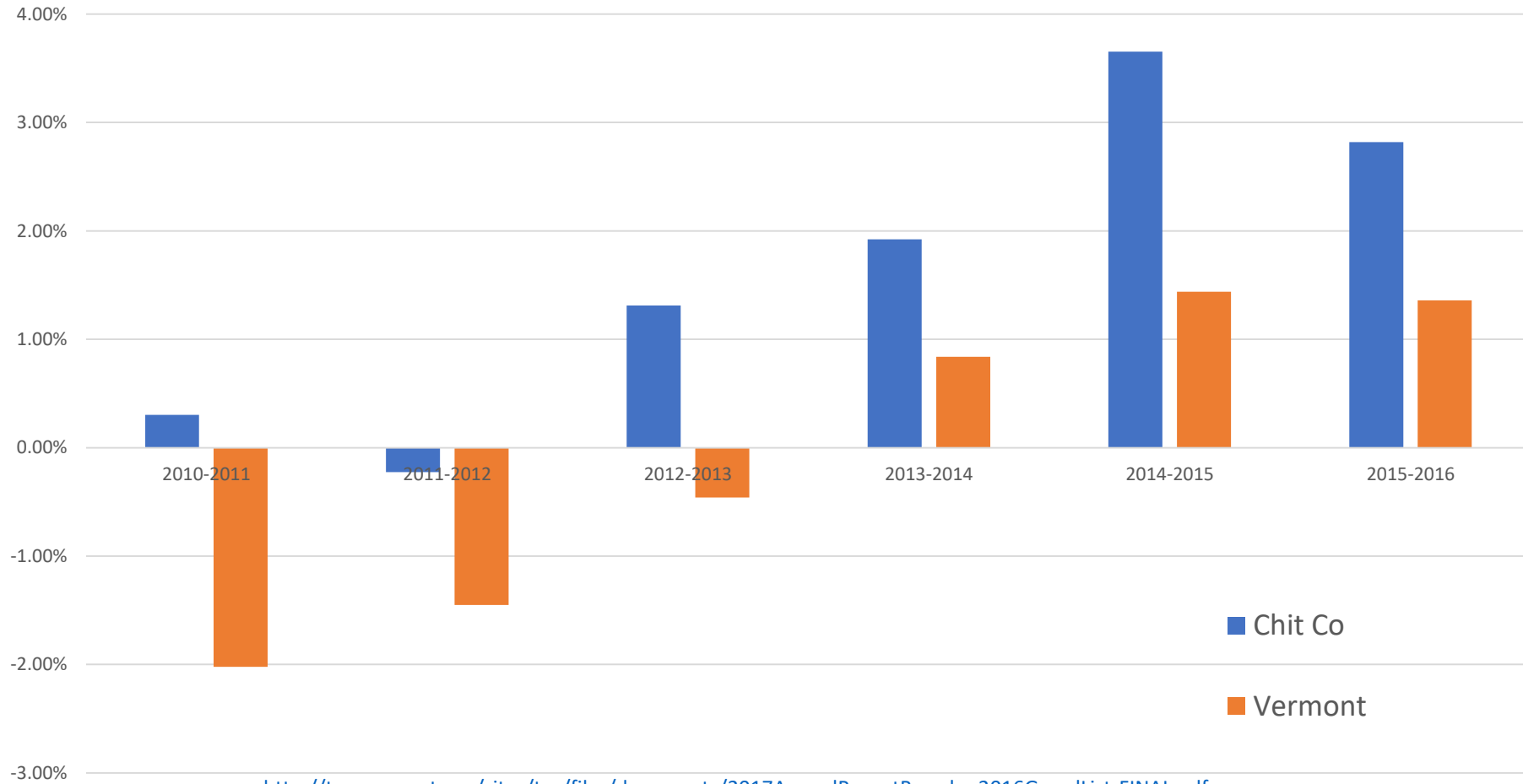
- Chittenden County contributed \$238,657,196 in personal income taxes

Retail & Use Tax Contribution - 2015



- Vermont collected \$4,328,884,375 in retail & use taxes, \$1,706,052,630 was contributed by Chittenden County

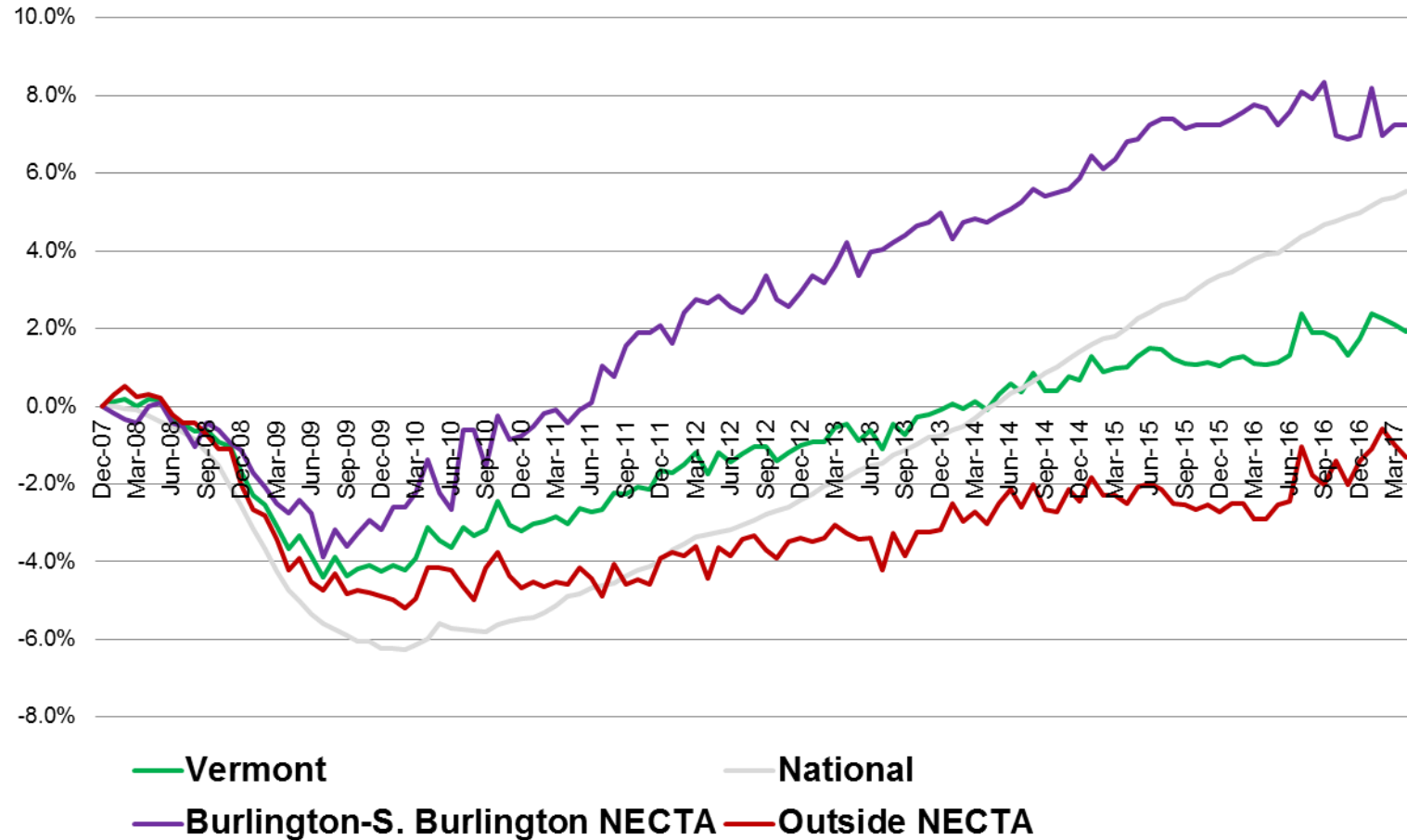
Percent Change in Total Equalized Education Grand List Value



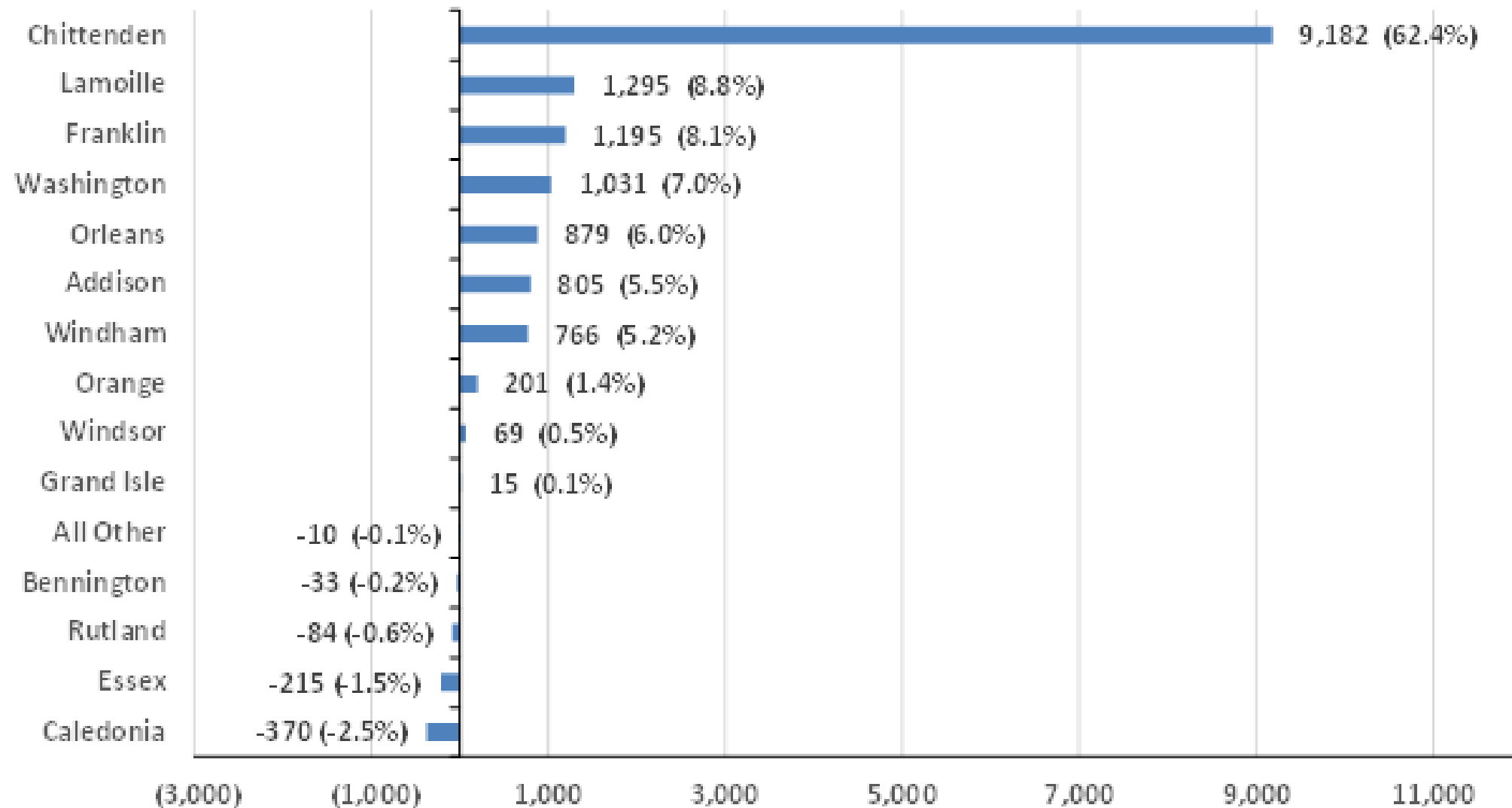
<http://tax.vermont.gov/sites/tax/files/documents/2017AnnualReportBasedon2016GrandList-FINAL.pdf>

Sub-State Employment Changes

2007 Recession
% Change in Jobs & Duration in Months:
United States and Vermont
Total Nonfarm Jobs

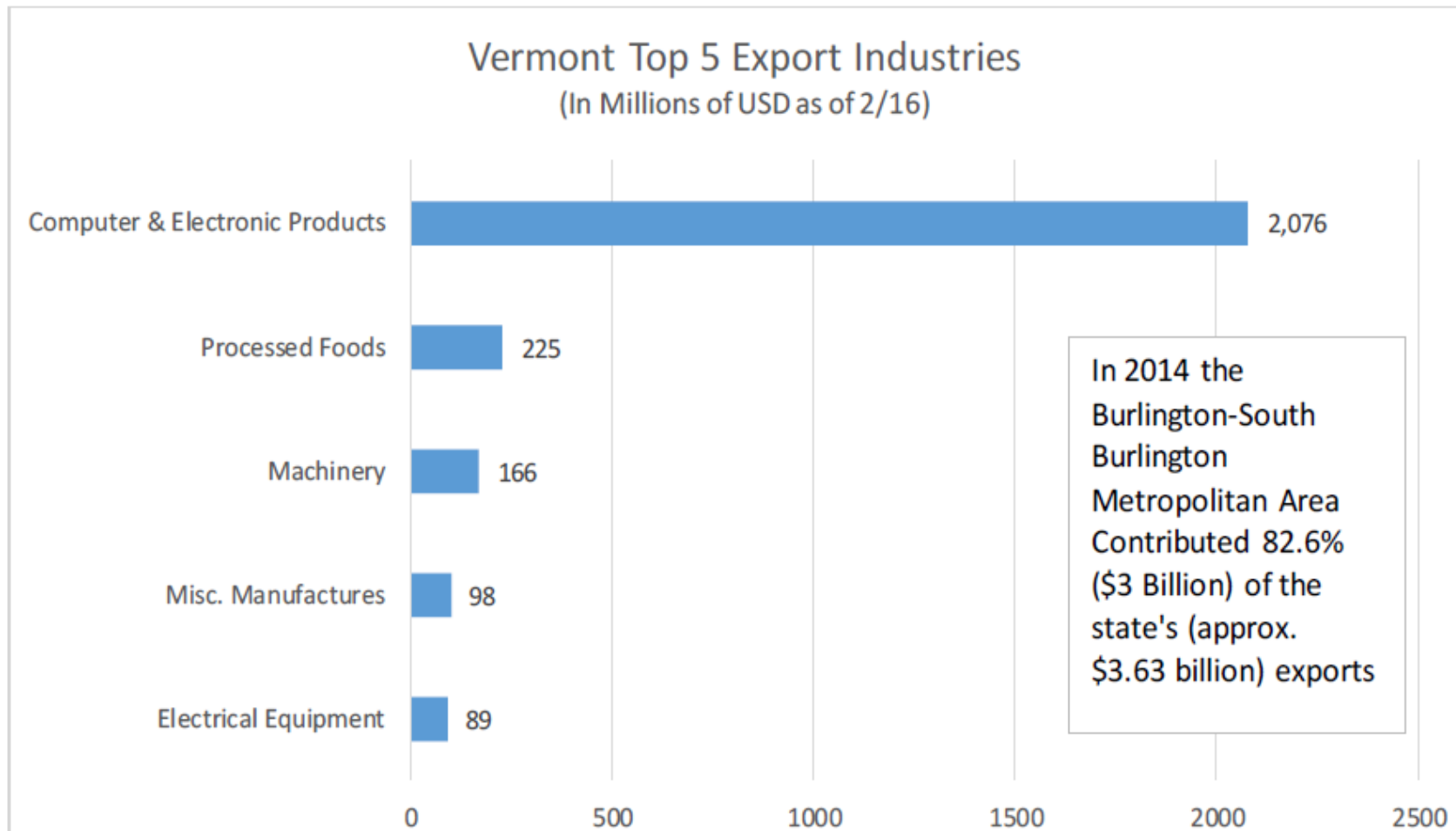


Change in Total Payroll Jobs by County 2009-2015, with Percent of Total Statewide Payroll Job Change

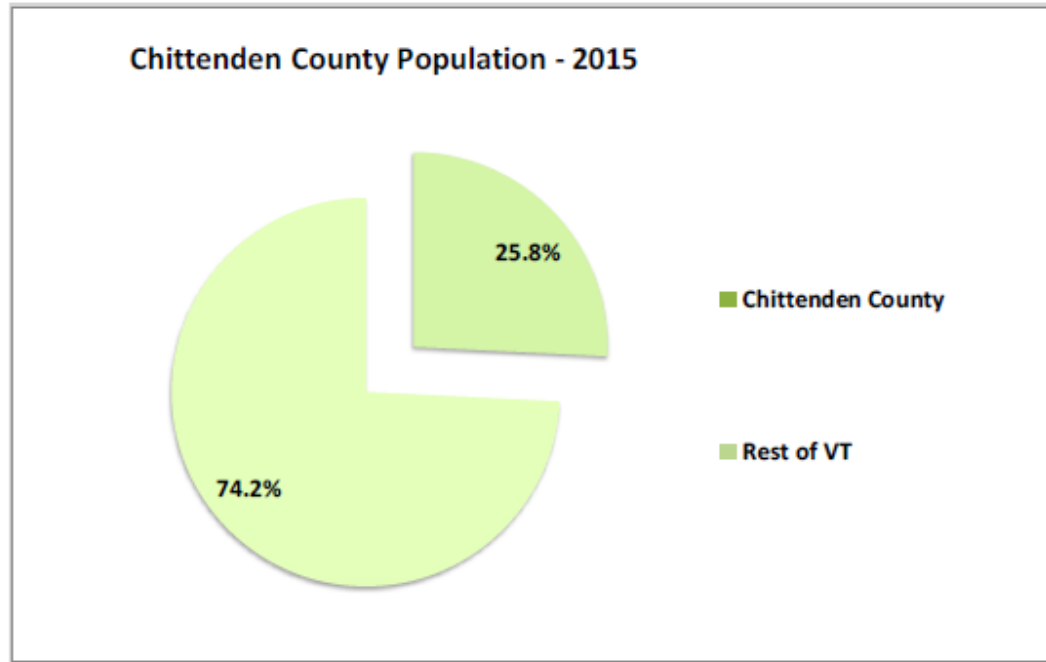


Notes: 'All Other' consists of all employers not assigned to a specific location for various reasons.

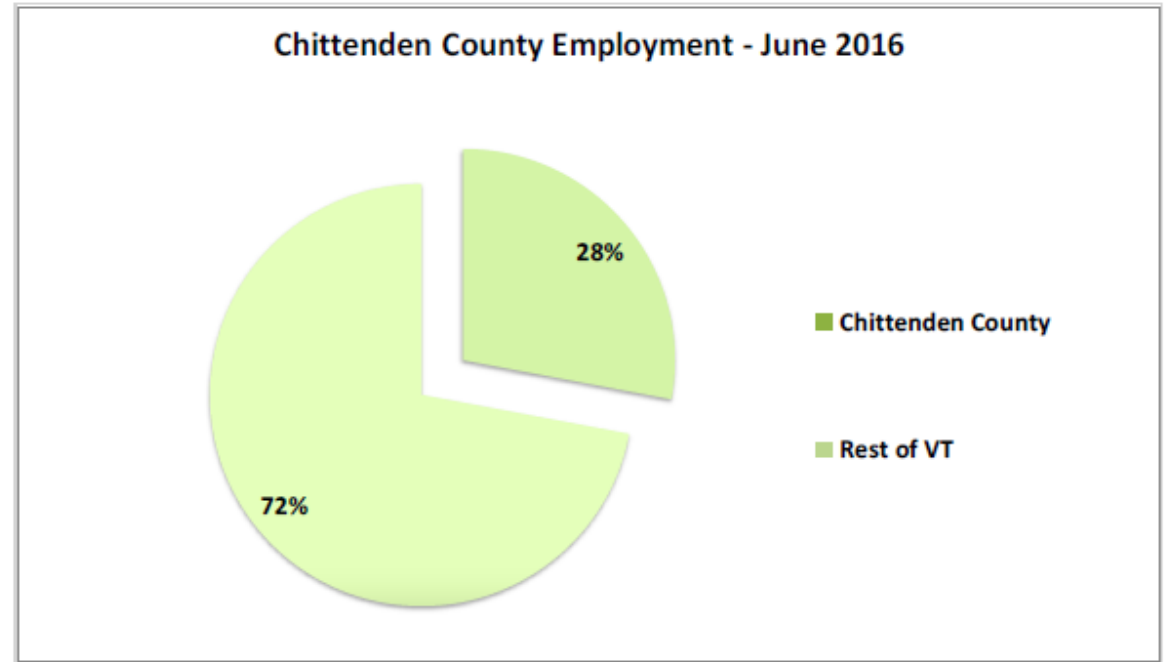
Vermont Exports



Chittenden County Labor Force & Population



- Chittenden County is home to 161,382 Vermonters



- 94,800 of the 339,050 employed Vermonters reside in Chittenden County

Population Growth Breakdown

