



Jim Ryan



VERMONT DEPARTMENT OF
ENVIRONMENTAL CONSERVATION
WATERSHED
MANAGEMENT DIVISION
STORMWATER PROGRAM

DEC's Municipal Roads General Permit

MRGP Coverage

Discharges of Stormwater (SW) from municipal roads including:

- Town highways, Classes 1-4
- SW infrastructure associated with town highways under the operational control of the municipality

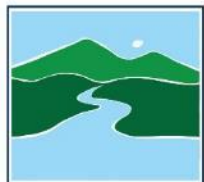
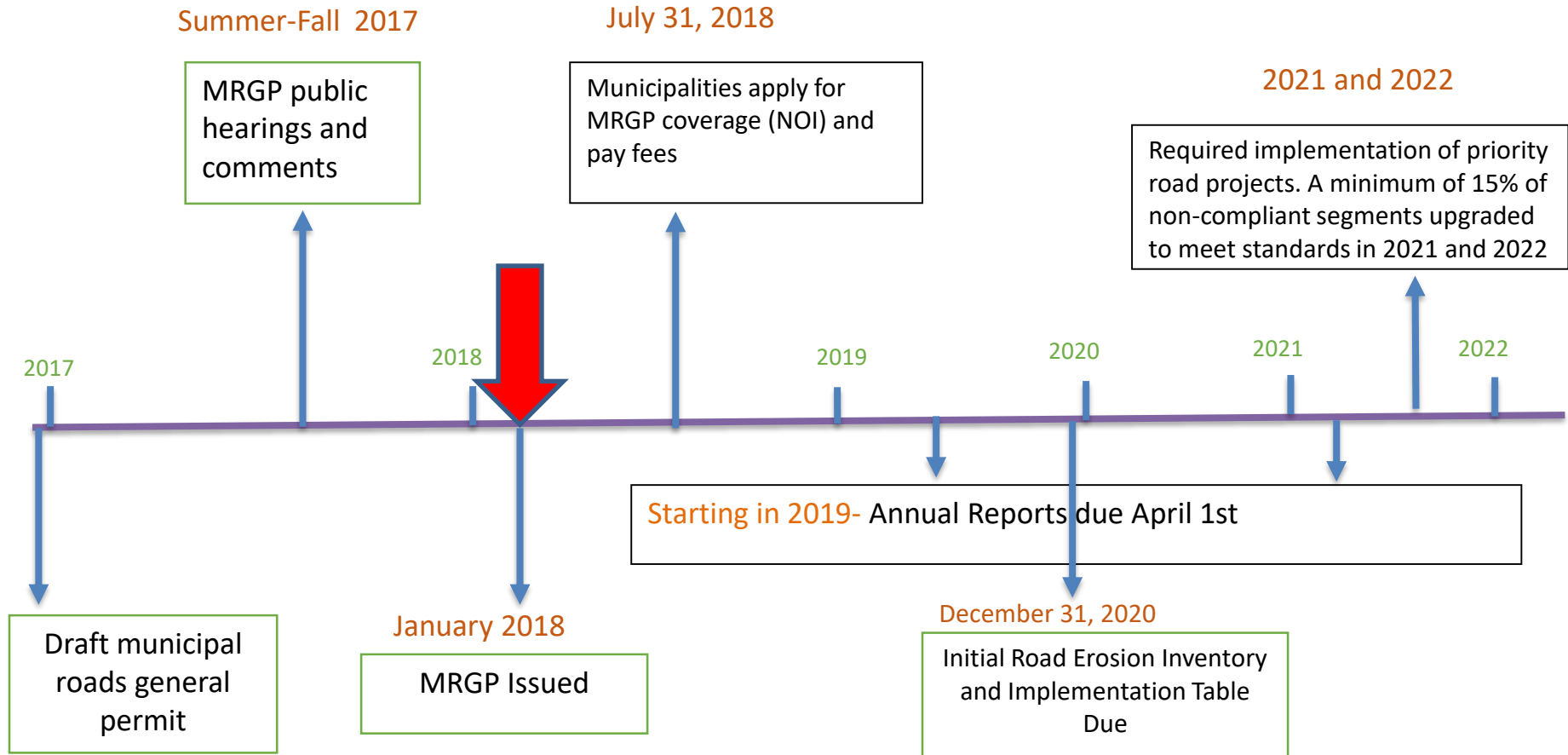
Exemptions:

- **Unorganized towns and gores exempt** from MRGP permit
- **MS4 towns-** exempt from MRGP fee and permit application but MRGP standards implementation will be required in future SW Management Plans

What is not covered by the MRGP

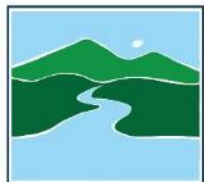
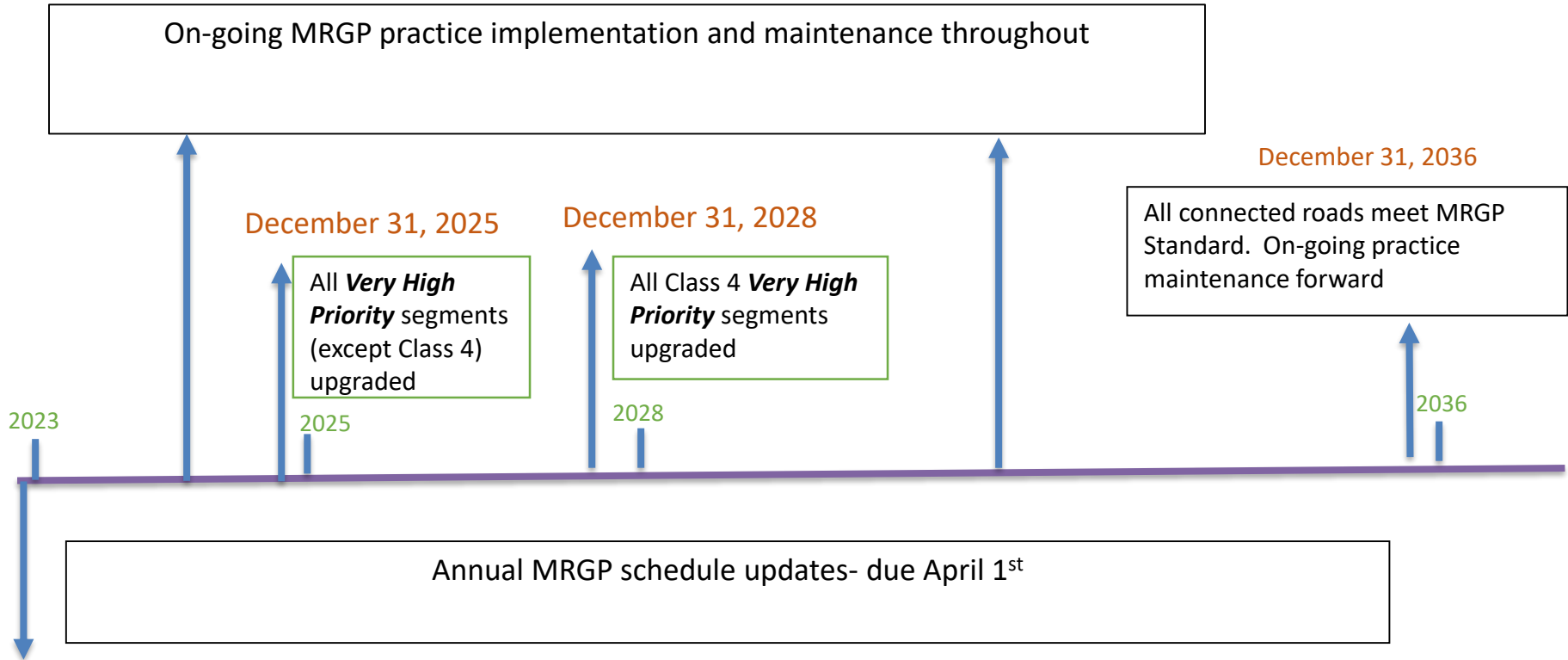
- Perennial stream crossing replacements or retrofits
- Road embankment streambank or lakeshore stabilization-related to stream or wave erosion
- Standard implementation considered infeasible if the implementation of that practice will trigger another state or federal permit (except non-reporting permits such as ACOE Self-Verified)

MRGP Timeline of Deliverables (Near-Term)



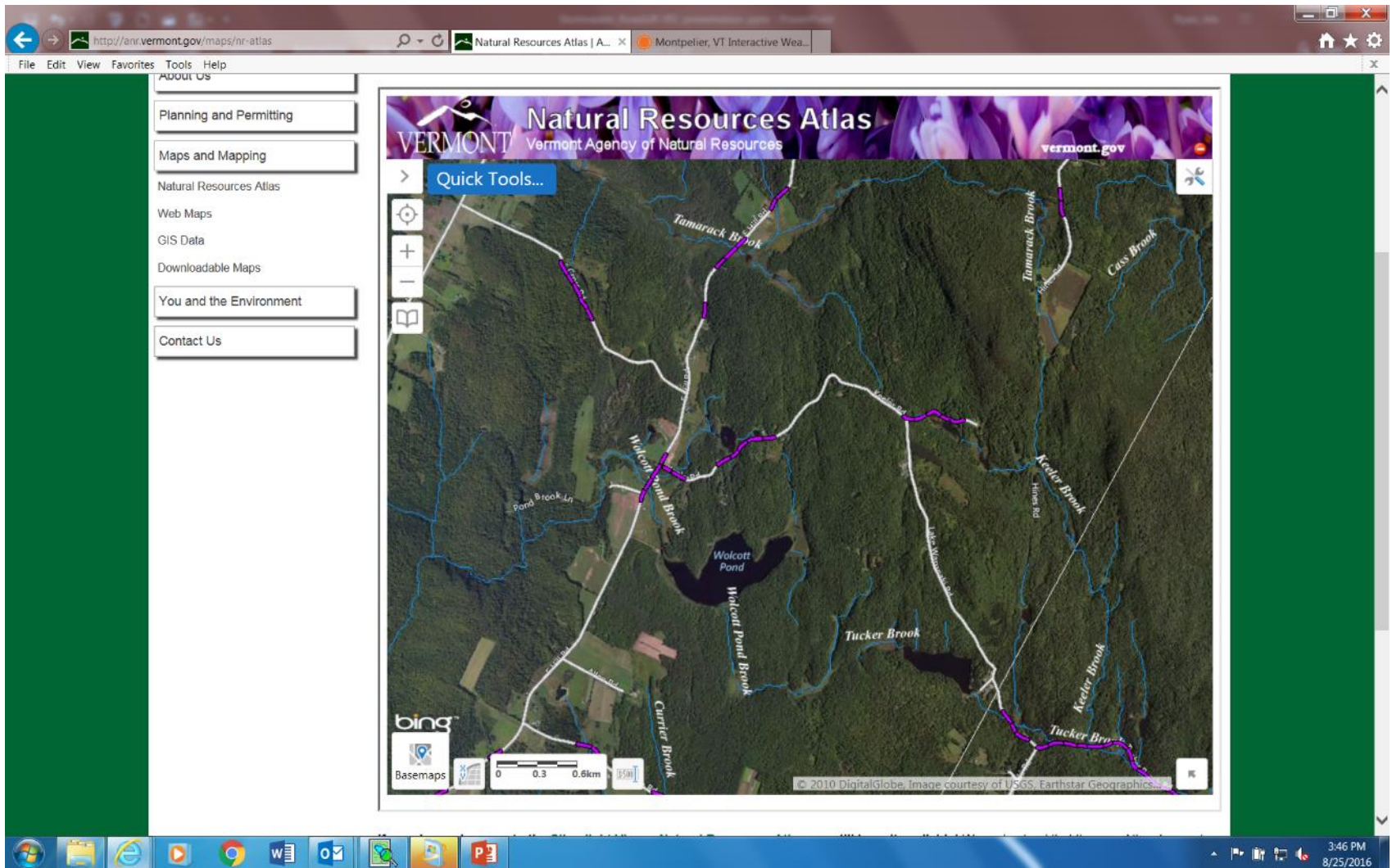
VERMONT DEPARTMENT OF
ENVIRONMENTAL CONSERVATION
WATERSHED
MANAGEMENT DIVISION
STORMWATER PROGRAM

MRGP Timeline of Deliverables (Longer-Term)

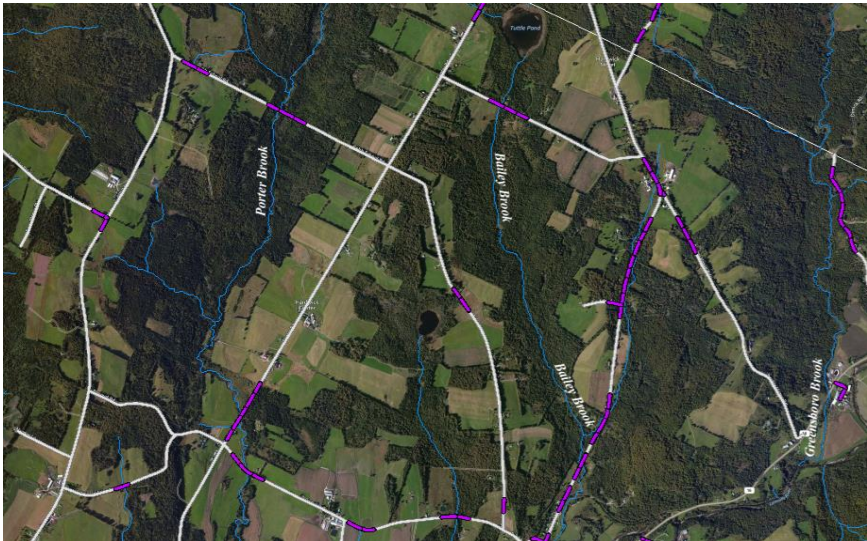


VERMONT DEPARTMENT OF
ENVIRONMENTAL CONSERVATION
WATERSHED
MANAGEMENT DIVISION
STORMWATER PROGRAM

Hydrologically-Connected Road Segments



Road Stormwater Management Plan Components



Inventory



Prioritize – Implementation Table

Road Segments															
Segment ID	TH Number	Road Name	Change in Connection	Road Type	Segment Slope %	Date of Assessment	Assessor	Organization	Assessment Reason	Assessment Reason Notes	Roadway Crown/Travel Lane	Roadway Crown/Travel Lane Erosion	Grader Berm /Window Assessment	Grader Berm /Window Erosion	Road Drainage Assessment
1	VT-001		Gravel-ditched		6	5/13/2017	John Snow		Initial Assessment		Fully Meets	Bill	Fully Meets	Bill	Partially Meets
2	VT-002		Gravel-ditched		10	5/13/2017	John Snow		Initial Assessment		Partially Meets	None	Partially Meets	None	Partially Meets
3	VT-003		Gravel-ditched		11	5/13/2017	John Snow		Re Assessment	Storm Damage	Does Not Meet	Gully	Does Not Meet	Gully	Does Not Meet
4	VT-004		Class 4		5	5/13/2017	John Snow		Re Assessment	Storm Damage					
5	VT-005		Class 4		9	5/13/2017	John Snow		Work Done	Rock lined Ditches					
6	VT-006		Gravel-ditched		4	5/13/2017	John Snow		Work Done	Rock lined Ditches					Partially Meets
7	VT-007		Gravel-ditched		12	5/13/2017	John Snow		Work Done	Rock lined Ditches					Partially Meets
8	VT-008		Paved-ditched		12	5/13/2017	John Snow		Work Done	Rock lined Ditches					Partially Meets
9	VT-009		Paved-ditched		12	5/13/2017	John Snow		Work Done	Rock lined Ditches					Partially Meets

Implement



Road Erosion Inventories (REIs)

Separate REIs and standards for:

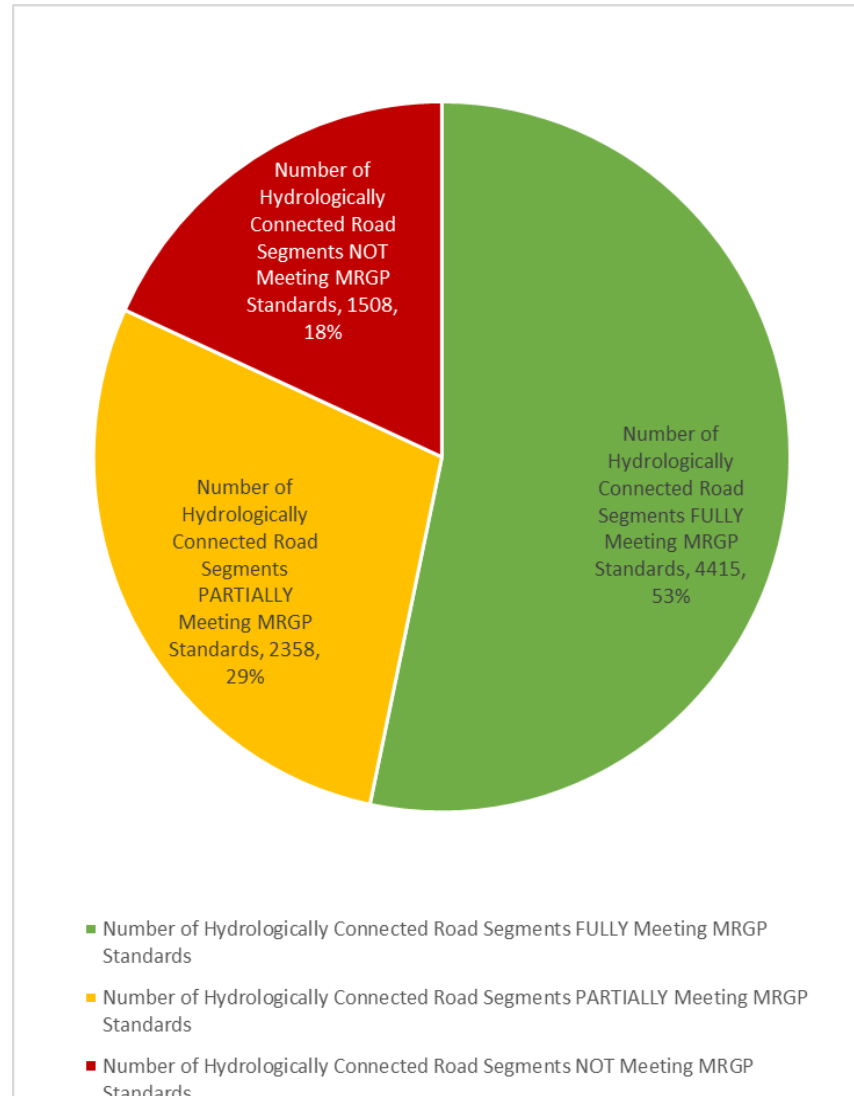
- Paved and gravel roads with ditches
- Paved roads with catch basins
- Class 4 roads

REI “scores” for each 328 foot segment:

- *Fully Meets*
- *Partially Meets* or
- *Does Not Meet*



Approximately half of connected roads already meet the MRGP Standards



Implementation Prioritization

- Towns will submit REI results and Implementation Tables by 12/31/2020
- All “connected” roads brought up to MRGP standards no later than 12/31/2036



Very High Priority (VHP) Segments Criteria

Gravel and Paved Roads with Drainage Ditches:

- *Does Not Meet* MRGP on slopes >10%

Paved Roads with Catch Basins:

- *Does Not Meet* with outfall erosion of 3 cubic yards or more

cubic yards= (length x width x depth)/27

Class 4 Roads:

- *Does Not Meet* MRGP (gully erosion) on slopes >10%



Very High Priority Segments Implementation Schedule

VHP Paved and Gravel Roads with Ditches:

- Shall meet standards by 12/31/2025

VHP Class 4 roads:

- Shall meet standards by 12/31/2028

VHP Paved Roads with Catch Basins:

- Shall meet standard by 12/31/2025



(Gully erosion)

Implementation Table

[illegible]

Implementation Table Components

- Road Erosion Inventory (REI) results
- Connected segments *Fully Meeting, Partially Meeting, and Not Meeting* MRGP Standards-report any segment status changes
- Lists all segments upgraded to meet MRGP Standards in previous calendar year

MRGP Implementation Example

Town A. has 52 total road miles (VT average)

- 26 road miles are **hydrologically-connected** road segments
- 26 miles not considered **connected** (no BMP work needed)
- 13 **connected** road miles currently fully meet MRGP standards (maintenance of BMPs only)
- 13 remaining **connected** miles – required to be brought up to MRGP Standards before 2036
- 15% of 13 miles = 1.95 miles or 31.2 segments will be brought up to standards over a 2 year period 2021 and 2022

Annual Reports due April 1st – starting in 2019

- Status of Road Erosion Inventory completion (2019 and 2020 reports)
- Documentation of segment upgrades during the previous calendar year
- Changes to segment compliance status



MRGP Principles

First – Disconnect road
Stormwater whenever
possible, starting at the top
of the road watershed

Second – Infiltrate
stormwater

Third – Stabilize
conveyances and turn out
ditches



Implementation “Triggers”

Required baseline standards- no matter what existing conditions are:

- Road grading/crowning
- Grass and stone-lined ditching (based on slope) or distributed flow
- Removal of grader berm
- Lowering of shoulders
- Stable turnouts

Practices are required when moderate (rill) to severe (gully) erosion present and for new construction:

- 18” drainage culvert minimum- (Culvert sizing information for intermittent streams available)
- 15” drive culvert
- Culvert headwalls/headers
- Culvert outlet stabilization
- Class 4 roads- gully erosion present
- Catch basin outfall erosion

Types of Erosion

Rill erosion 1" to <12" deep



Gully erosion 12" plus



**Seed and mulch or stone stabilization required for any work
on connected roads within 5 days of disturbance
(starting this field season)**



New MRGP Fees?

Fees established through the 2015 Legislative Fee Bill

- \$240/Administrative processing fee- due 7/31/18 twice every permit cycle (is considered a major permit amendment)
- \$400/application fee- due 6/1/19 (once every permit cycle)
- \$2,000/annual operating fee- due 6/1/19



MRGP Summary for Municipalities:

- **July 31, 2018:** MRGP application coverage – Notice of Intent and annual fees begin
- **April 1, 2019:** Annual Reporting begins
- **December 31, 2020:** Road Erosion Inventories and Implementation Plans due
- **2021 Field Season** (or sooner): Road upgrades begin
- **December 31, 2025** (or sooner): All *Very High Priority* segments brought up to standards, except Class 4's
- **December 31, 2028** (or sooner): All *Very High Priority* Class 4 roads brought up to standards
- **December 31, 2036** (or sooner): all connected roads meet MRGP standards

Assistance to Towns



- Funding – *New* Municipal Grant-in-Aid
- Outreach and Technical Assistance
- Shared Equipment

Grant in Aid – FY18 Results and FY19 Funding

FY 18 GIA – Actual Funding:

- 186 participating towns – 70% participation
- \$2.6 million
- Approximately 42 road miles will be brought up to the new MRGP standards by July 1, 2018.

FY 19 GIA – \$2.9 million (anticipated)



VTrans and DEC Road Roundtable Trainings



Spring 2018 Roundtable Forums schedule:

- 4/26 Wallingford
- 5/3 Bellows Falls
- 5/10 Hinesburg
- 5/17 Groton
- 5/24 Wolcott

For Additional Information:

<http://dec.vermont.gov/watershed/stormwater/permit-information-applications-fees/municipal-roads-program#Development of Permit>

Jim Ryan

jim.ryan@vermont.gov

(802) 490-6140



VERMONT DEPARTMENT OF
ENVIRONMENTAL CONSERVATION

**WATERSHED
MANAGEMENT DIVISION**

STORMWATER PROGRAM