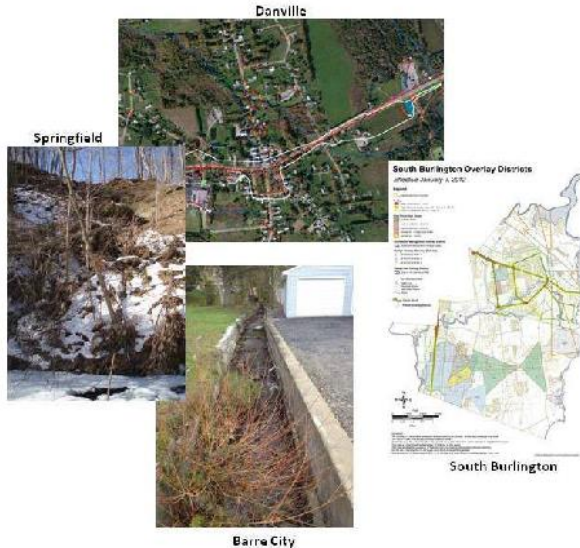


VERMONT STORMWATER MASTER PLANNING GUIDELINES



AGENCY OF NATURAL RESOURCES
VERMONT DEPARTMENT OF ENVIRONMENTAL CONSERVATION
ECOSYSTEM RESTORATION PROGRAM
MAY 30, 2013

Appendix: Vermont municipalities with existing stormwater plans and suggested templates for towns without plans (1/28/2016)

Municipality with Urbanized Areal/Rural Municipality	2008 Population	River Basin	Regional Water Basin	Listed for Water Quality Problems Due to Developed Land	DEC GIS SW Map	Existing Stormwater Ordinance	Suggested SW Master Planning Template	Status of SW Master Planning	Growth Center Category
<i>Addison</i>	1,413	LC	Lake Champlain			NA	3b		
<i>Albany</i>	808	Mag	Lake Memphremagog			NA	3b		
Alburgh	2,045	LC	Lake Champlain		2016	NA	3b	Completed	Alburgh Village Center
<i>Andover</i>	548	Will	Connecticut River			NA	3b		
Arlington & Arlington Village	2,425	Bat	Hudson		2016	Yes	2a		
<i>Athens</i>	323	Sax	Connecticut River			NA	3b		
<i>Averill</i>	8	Aver	St Lawrence			NA	3b		
<i>Avery's gore</i>	1	Nul	Connecticut River			NA	3b		
Bakersfield & Bakersfield Village	1,402	Miss	Lake Champlain		2014	NA	3b		Bakersfield Village Center
<i>Baltimore</i>	200	Black	Connecticut River			NA	3b		
<i>Barnard</i>	653	White	Connecticut River		2015	NA	3b		
<i>Barnet</i>	1,773	Conn	Connecticut River			NA	3b		
Barre Town	8,005	Win	Lake Champlain	Gunner Brook on 303d-Part A, Jail Branch & Stevens Branch on Priority Waters List Part C	2013	Yes	3c	To be completed in 2017.	
Barre City	8,637	Win	Lake Champlain	Gunner Brook on 303d-Part A, Jail Branch & Stevens Branch on Priority Waters List Part C	2013	No	3c	Park Street neighborhood to be completed in 2016. Quarry Hill to be completed in 2017. Overall plan to be completed in 2017.	Barre City Downtown
Barton & Barton Village & Orleans Village	2,786	Mag	Lake Memphremagog		2013	No	1b & 2a		Barton Village Center
<i>Belvidere</i>	280	Lam	Lake Champlain			No	3b		
Bennington	15,093	Hud	Hudson		2015	Yes	3c		North Bennington Village Center/Bennington Downtown/Bennington Growth Center

VTDEC Clean Water Initiative Program

Municipal Stormwater Management

- (1) Statewide Municipal Stormwater Infrastructure Mapping, Retrofits & Outfall Testing (IDDE) Reports, “Connected” Roads Maps, web access to SW data.
- (2) Stormwater Master Planning Guidelines, Templates & Example Plans
- (3) Youtube Webinars:

[Webinar 1 - What is Stormwater Master Planning?](#)

[Webinar 2 - Site, Local, or Small Watershed with LID Focus](#)

[Webinar 3 - Hybrid Site/Community Retrofit with LID Focus](#)

[Webinar 4 - Community/ Watershed Approach and Traditional End-of-Pipe Focus](#)

[Webinar 5 - Regional or Multi-Town Approach with Rural Road Focus](#)

[Webinar 6 - Crosby Brook Restoration Study](#)

<http://dec.vermont.gov/watershed/cwi/solutions/municipal-stormwater>

Model Outline for Stormwater Master Plans

- 1. Water Problem Definition*
- 2. Existing Data Collection*
- 3. New Data Collection*
- 4. Existing and proposed program, procedure or practice evaluation*
- 5. Summary and Recommendations:*
 - a. Summarize current conditions;*
 - b. Propose additional system knowledge acquisition based on 2 & 3;*
 - c. Proposed actions for existing development;*
 - d. Proposed actions for new development;*
 - e. Coordinate 5c and 5d actions with municipal capital development plans;*
 - f. Coordinate public comments/input.*