

Bike & Pedestrian Crossing Study: Williston Road at I-89 Exit 14



Public Workshop
November 16, 2016
South Burlington, Vermont



Who are we?



Christine Forde

Peter Keating



Ilona Blanchard

Ashley Parker



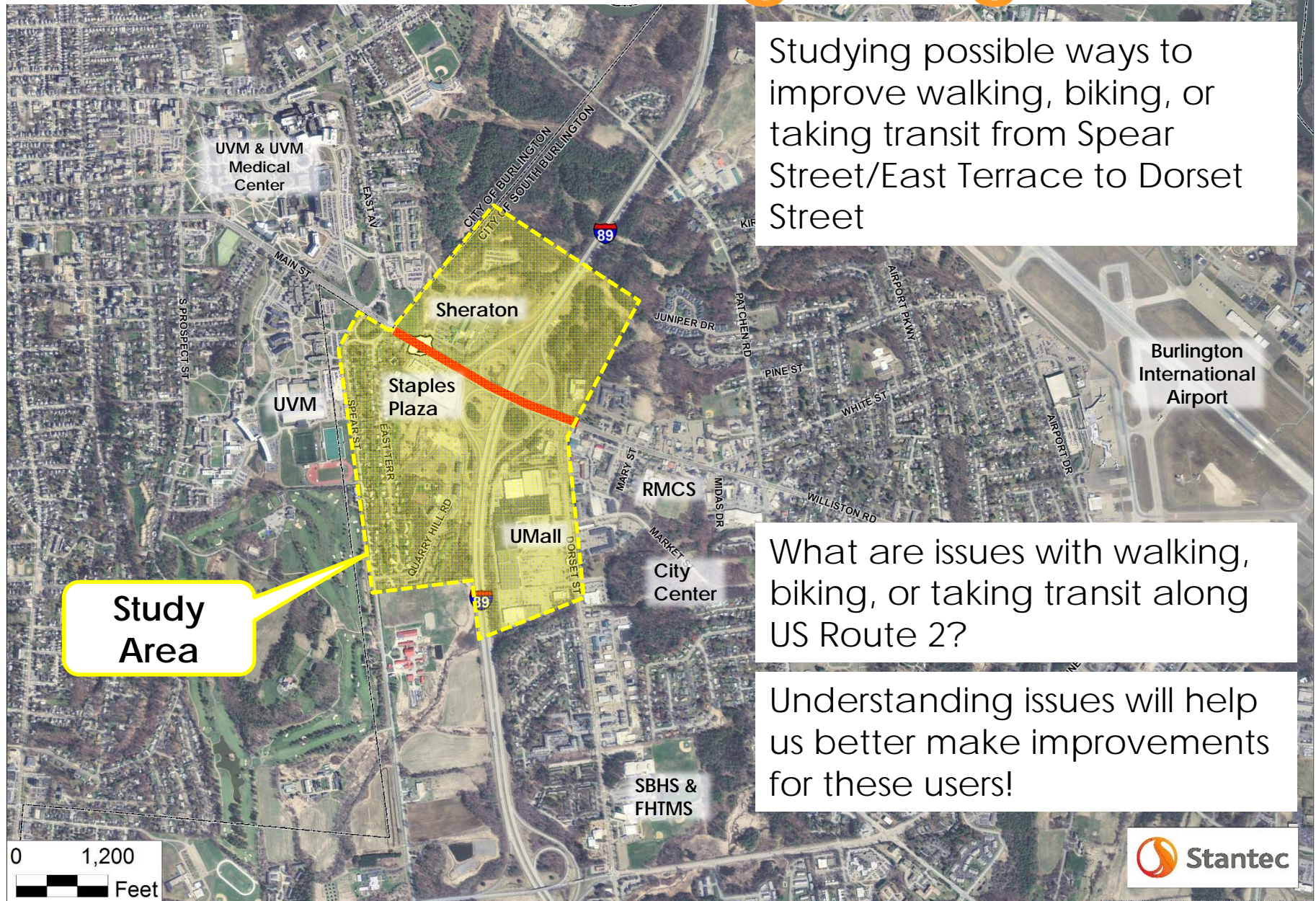
Greg Goyette

Sean Neely

What are we doing tonight?



Studying possible ways to improve walking, biking, or taking transit from Spear Street/East Terrace to Dorset Street



Study Area

What are issues with walking, biking, or taking transit along US Route 2?

Understanding issues will help us better make improvements for these users!

0 1,200
Feet





Project
Definition

Funding

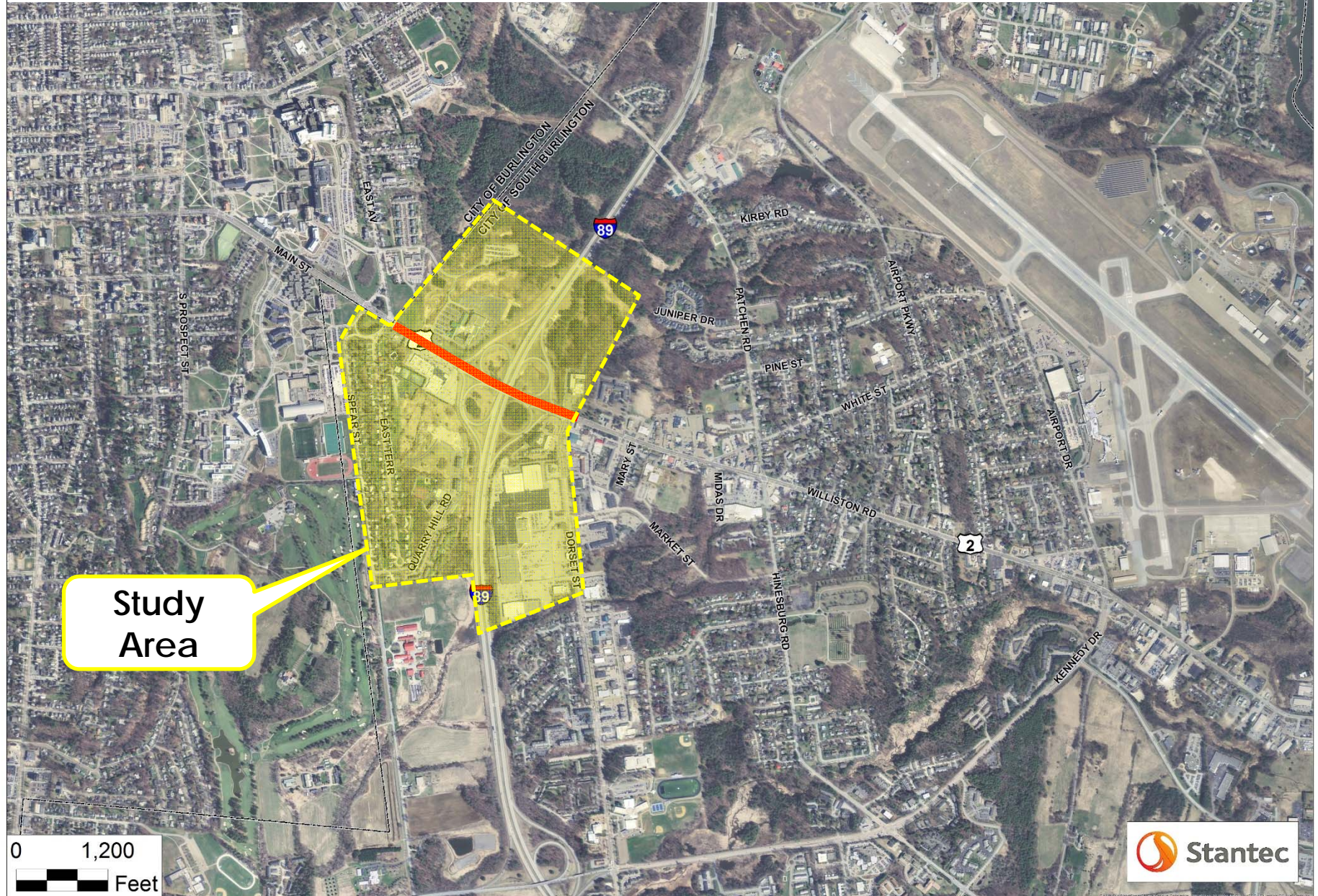
Engineering

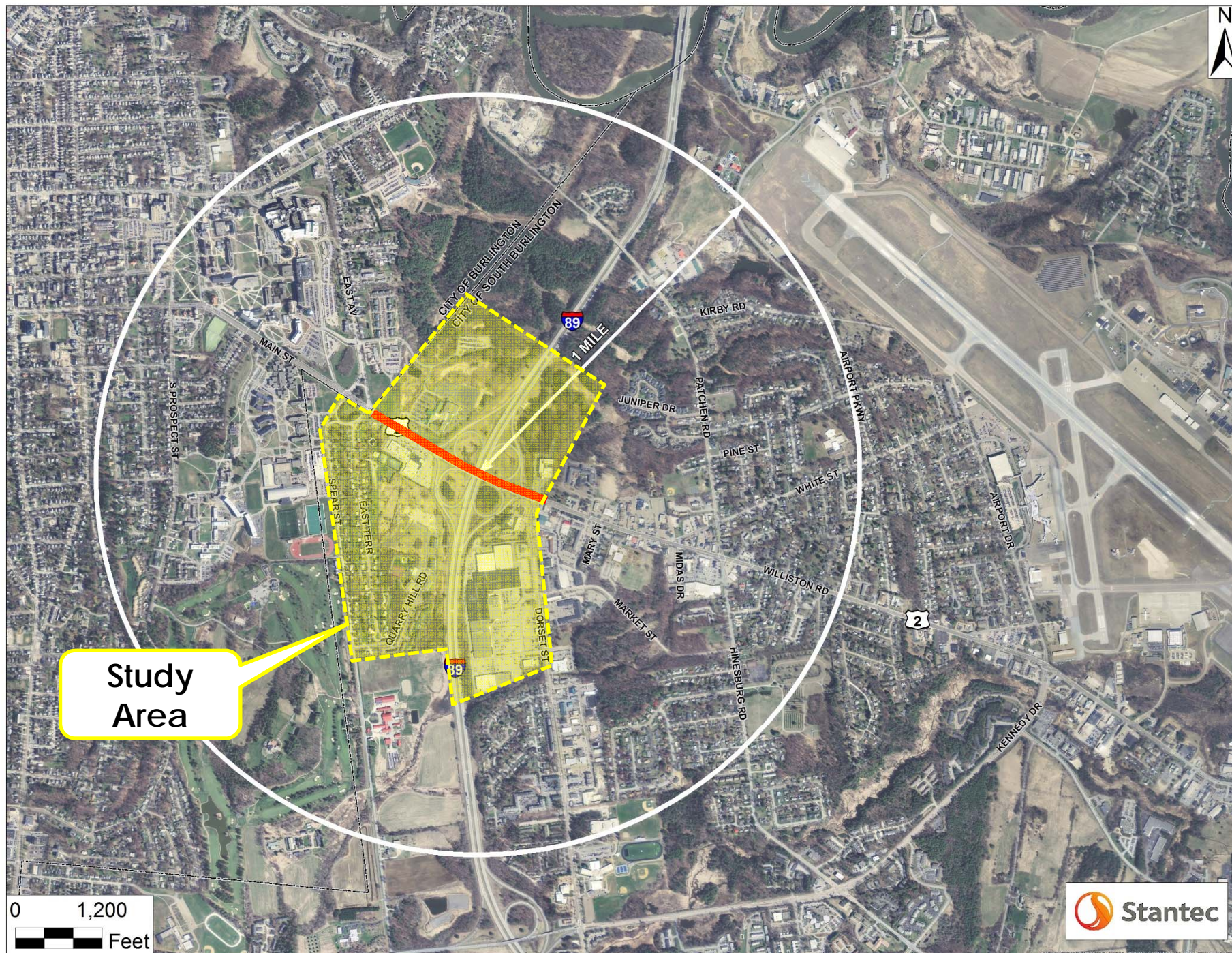
Construction

How are we going to do this?

- Task 1: Data gathering, existing conditions analysis; **Ongoing**
- Task 2: Stakeholder Meeting and Public Workshop #1; **Tonight**
- Task 3: Purpose & Need Statement; **Dec 2016**
- Task 4: Alternatives development; **Dec 2016 – Feb 2017**
- Task 5: Public Workshop #2; **March 2017**
- Task 6: Prepare draft recommendations; **April 2017**
- Task 7: Present final recommendations to City Council for consideration; **May 2017**

What do we know?

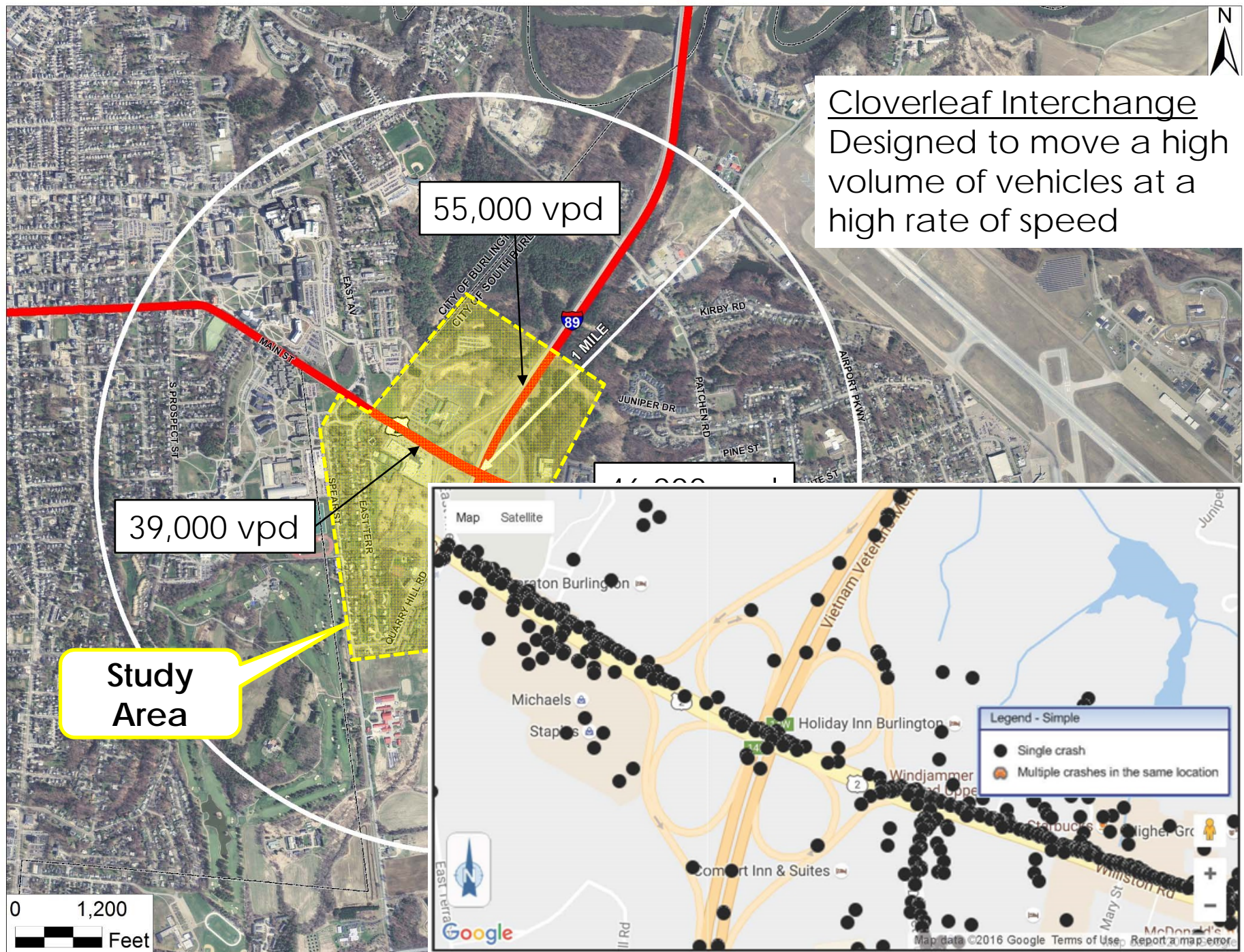


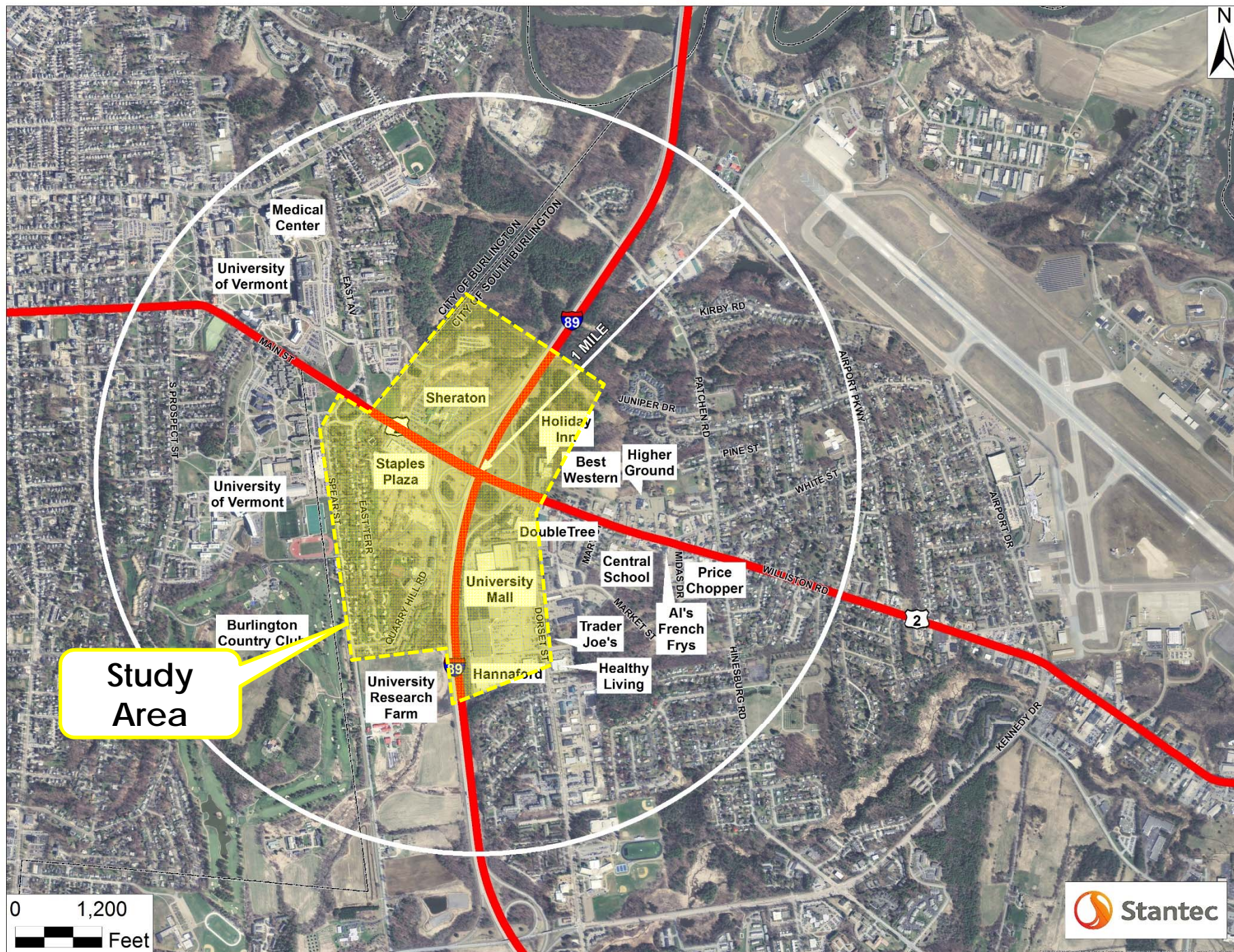


Study
Area

0 1,200
Feet

Stantec





PlanBTV: Walk/Bike 2016 (draft)

st killed
ie way

home as a safety precaution and was harassed by a car driver saying I should be on the road. Can't win!



UNFRIENDLY FOR BIKES/PEDS

This bridge is a choke-point for traffic and very unfriendly for bike/pedestrians cutting off a large population on either side from accessing on another on foot or bike.

PEDESTRIAN/BIKE BRIDGE

Given the future development of the South Burlington City Center, the proposed upgrading of the University Mall, and increased development on the southwest side of the present Rte 89/Rte 2 intersection action on an alternate crossing of Interstate 89 will become an important improvement for pedestrians, people on bikes and motorists on Williston Road/US 2.

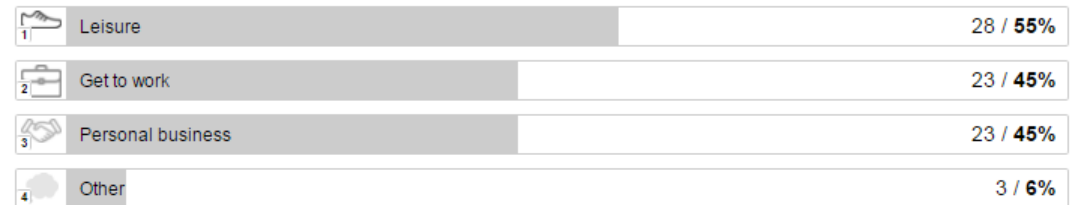


US Route 2 User Survey

- Posted at various locations along walking/biking route
- How is the existing route being used?
- What are issues with existing route? Received a lot of feedback to date
- Survey open until end of November
- Survey link: bit.ly/2eIPwT6

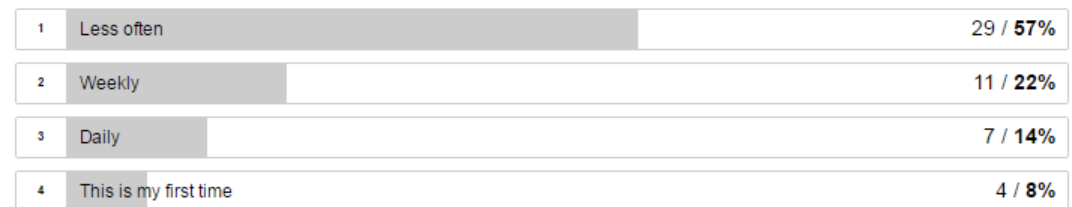
Why do you walk or bike across this bridge?

51 out of 53 people answered this question



How often do you typically walk or bike across this bridge?

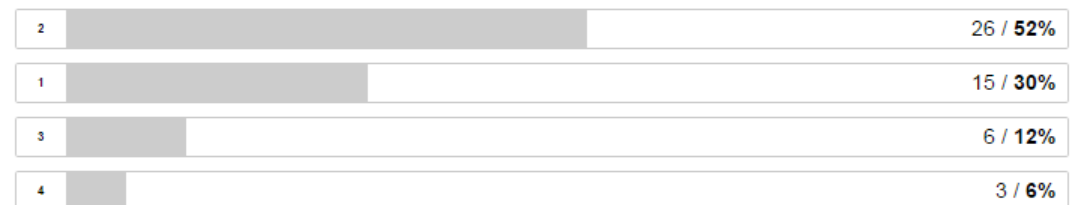
51 out of 53 people answered this question



How comfortable are you with walking or biking across this bridge?

50 out of 53 people answered this question

Average: 1.94

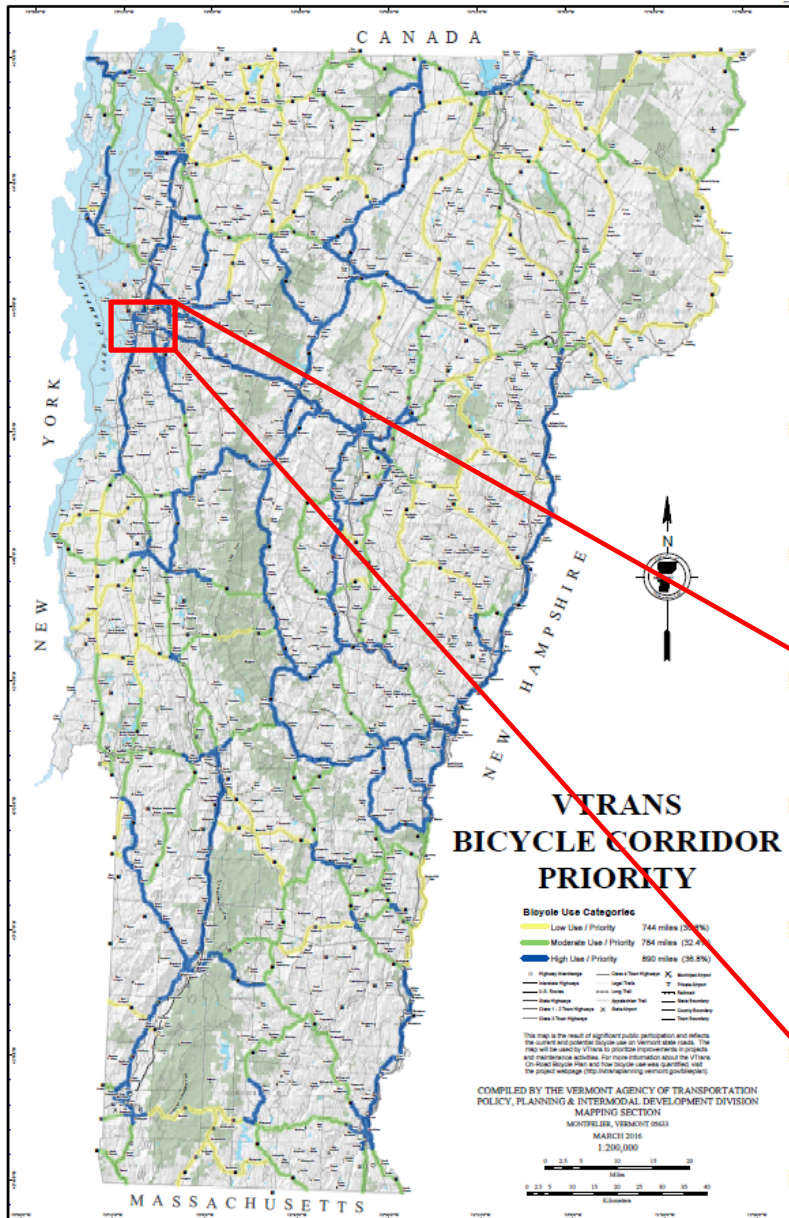


Does crossing this bridge deter you from traveling to destinations on the other end of the bridge?

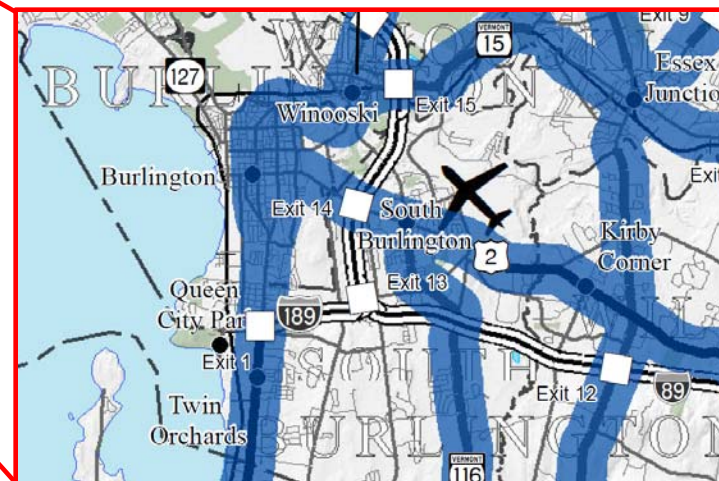
48 out of 53 people answered this question



VTrans On-Road Bicycle Plan 2016



- High priority areas to improve bicycling routes
- Data analysis, public engagement
- Bicycle Corridor Priority Map
- US Route 2 "High Use/High Priority" for bicycles

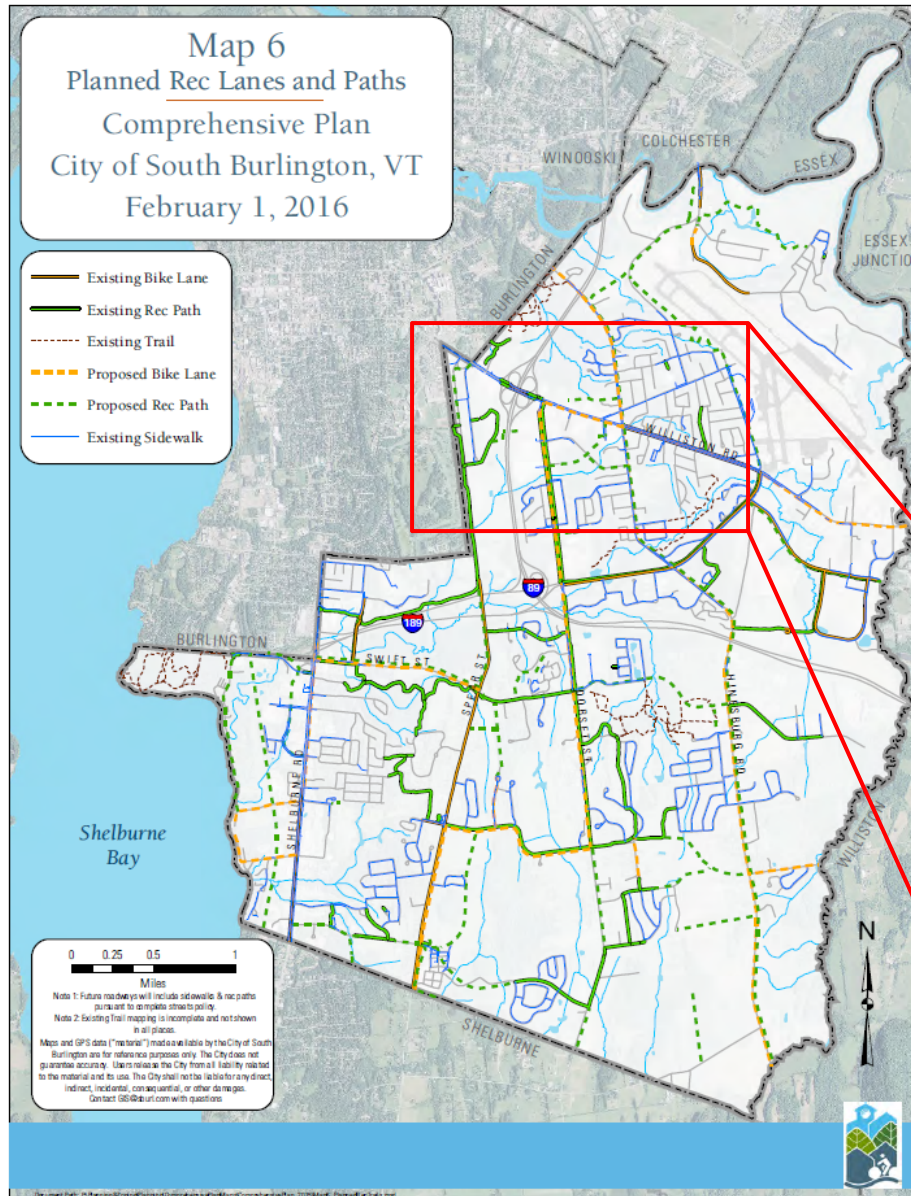


US 2 Corridor Management Plan - 2007

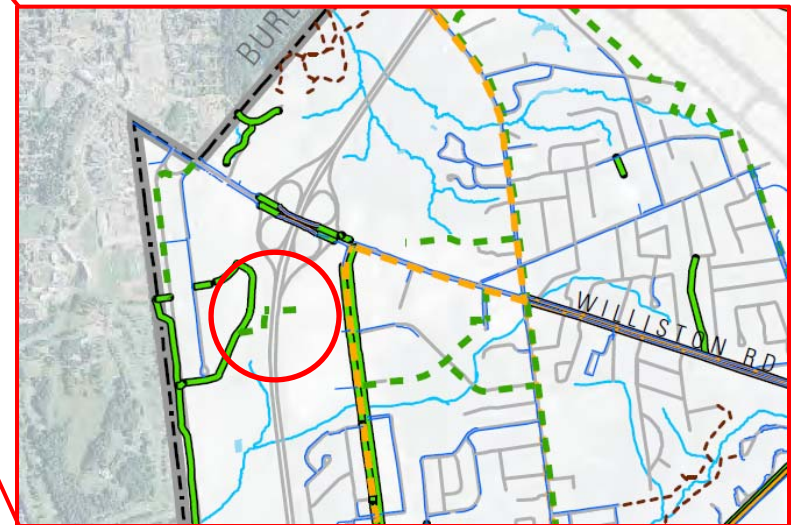


- Transportation along US 2 Corridor from Burlington to Winooski
- Existing bridge over I-89 – one of most challenging locations for all cyclists
- New bridge over I-89 - transit and non-motorized travel

South Burlington Comprehensive Plan 2016



- Special emphasis on bike/ped connectivity
- Recognizes need for safer I-89 crossing to connect community
- Proposed new I-89 crossing south of Route 2



Chittenden County Active Transportation Plan 2016 (draft)

CHITTENDEN COUNTY ACTIVE TRANSPORTATION PLAN

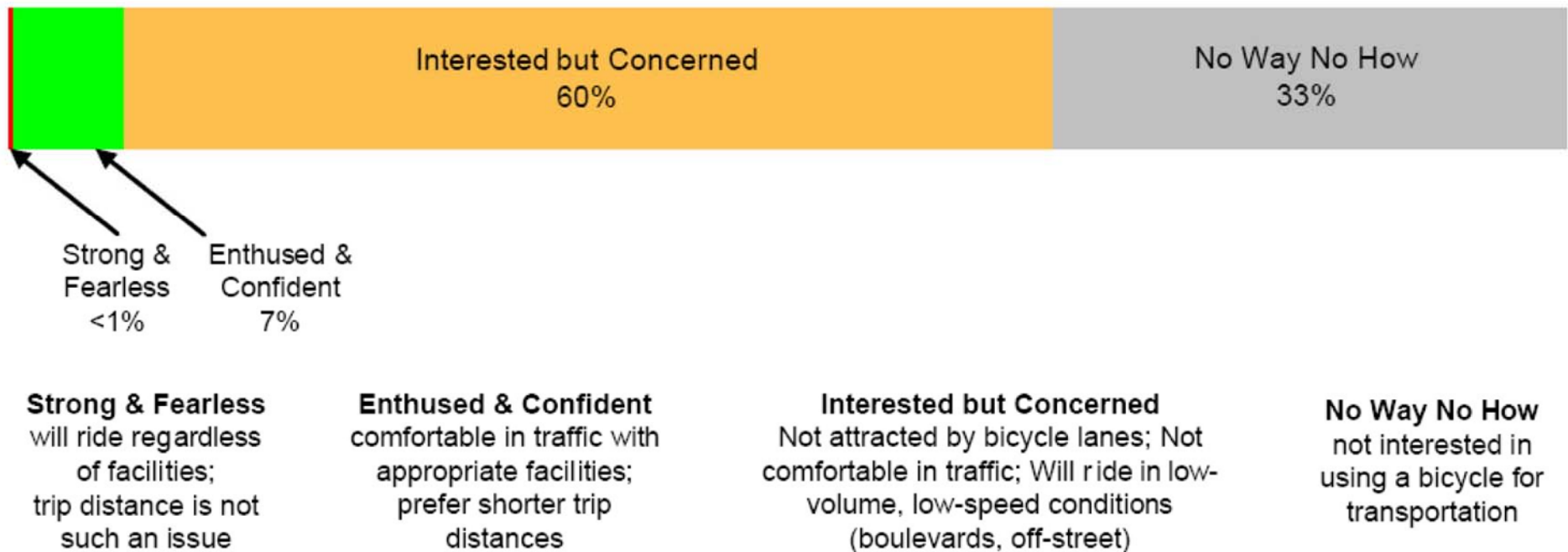
- Promotes county-wide network of low-stress bike/ped network
- Community input identified US 2 at I-89 interchange as barrier to walking/biking
- High stress route
- Recommends study of different designs to improve bike/ped for I-89 Exit 14 Interchange



Vermont

Four Types of Transportation Cyclists in ~~Portland~~

By Proportion of Population



Source: Portland Bureau of Transportation; Portland, OR



Enthusied &
Confident (~10%)

Unprotected Bicycle
Lanes



Interested but
Concerned (~60%)

Off-Road Shared-use
path



Enthusied and
Confident, Some
Interested and
Concerned (~10 –
60%)

Protected Bicycle Lanes



All cyclists

Two-way protected
bikeway with sidewalk

What group
bikes this?



We need your input!

- Breakout groups – assign group leader
- Reconvene in 30 to 40 minutes
- Be respectful of all ideas – everything is being considered at this point!
- Listen to what others have to say – please refrain from talking over people

Tell us about:

- Pedestrian needs
- Bicycle needs
- Transit service needs
- Ideas/solutions
- Other needs, concerns, etc.





Next steps

- Develop Purpose & Need Statement
- Develop options for improvements
- Meet with stakeholders
- Conduct Public Workshop #2 – March 2017

Thank you!



Christine Forde, CCPRC:
cforde@ccrpcvt.org

Ilona Blanchard, City of South Burlington:
lblanchard@sburl.com

Greg Goyette, Stantec:
greg.goyette@stantec.com

Project Website:
<http://www.ccrpcvt.org/i-89-exit-14>