

VT 15 Athens Drive to VT 289 Scoping Study

Public Meeting
December 11, 2017
Essex, Vermont



TOWN OF
Essex, Vermont



Tonight's Purpose

- Introduce PAC and review project area
- Review project development process
- Review existing conditions research
- **Gather feedback on issues, concerns, ideas - open public discussion**
- Discuss next steps



Introductions : Project Advisory Committee

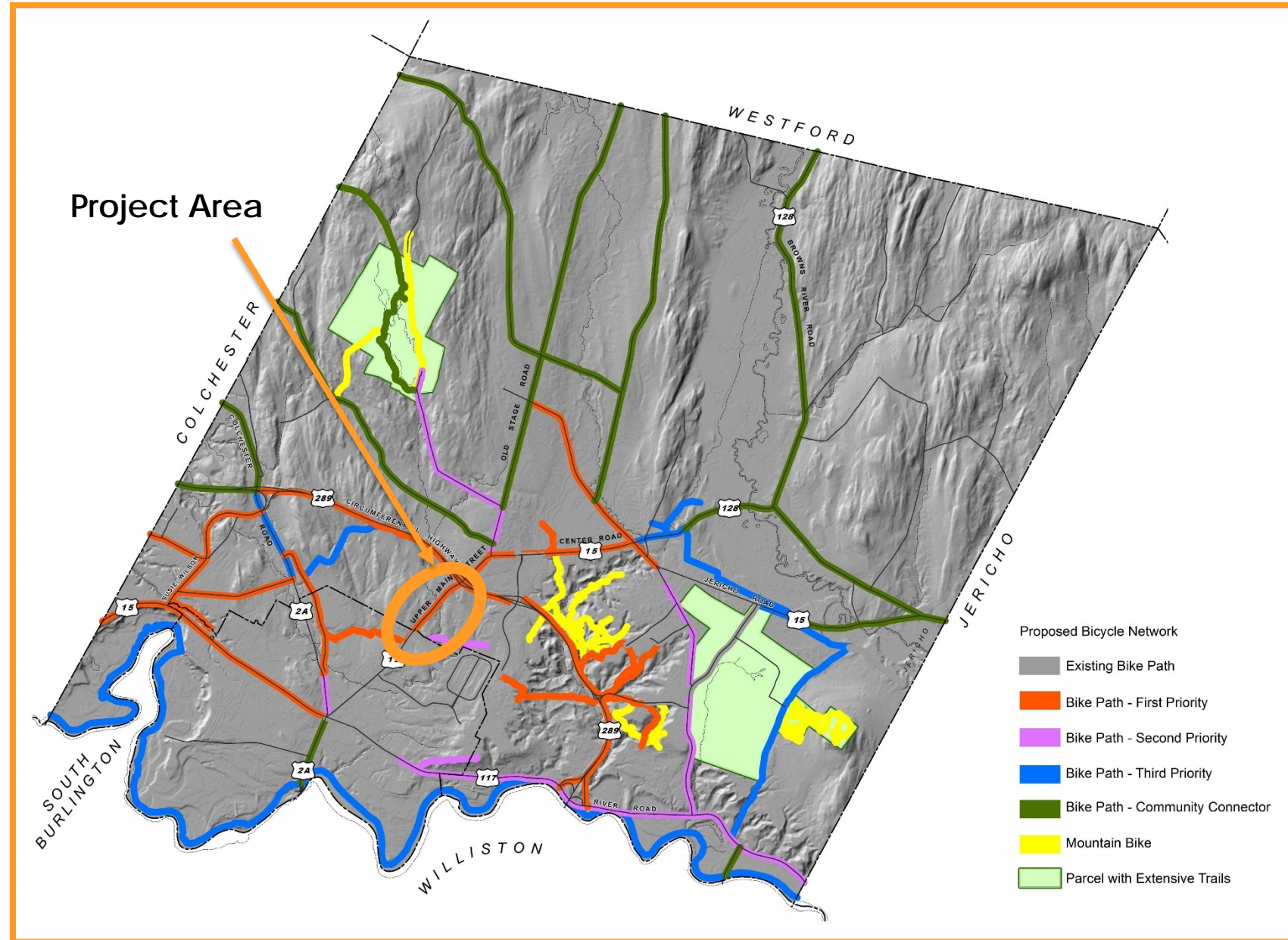
- Essex Jct. Village Staff
 - Robin Pierce, Rick Jones
- Essex Town Staff
 - Dennis Lutz, Darren Schibler
- CCRPC
 - Christine Forde, Marshall Distel



PAC Roles and Responsibilities

- Attend and participate in PAC meetings
- Review and comment on distributed materials
- Provide guidance, insight, and feedback throughout
- Update representing entities on study progress
- Indicate preferences for improvements

Project Background and Area

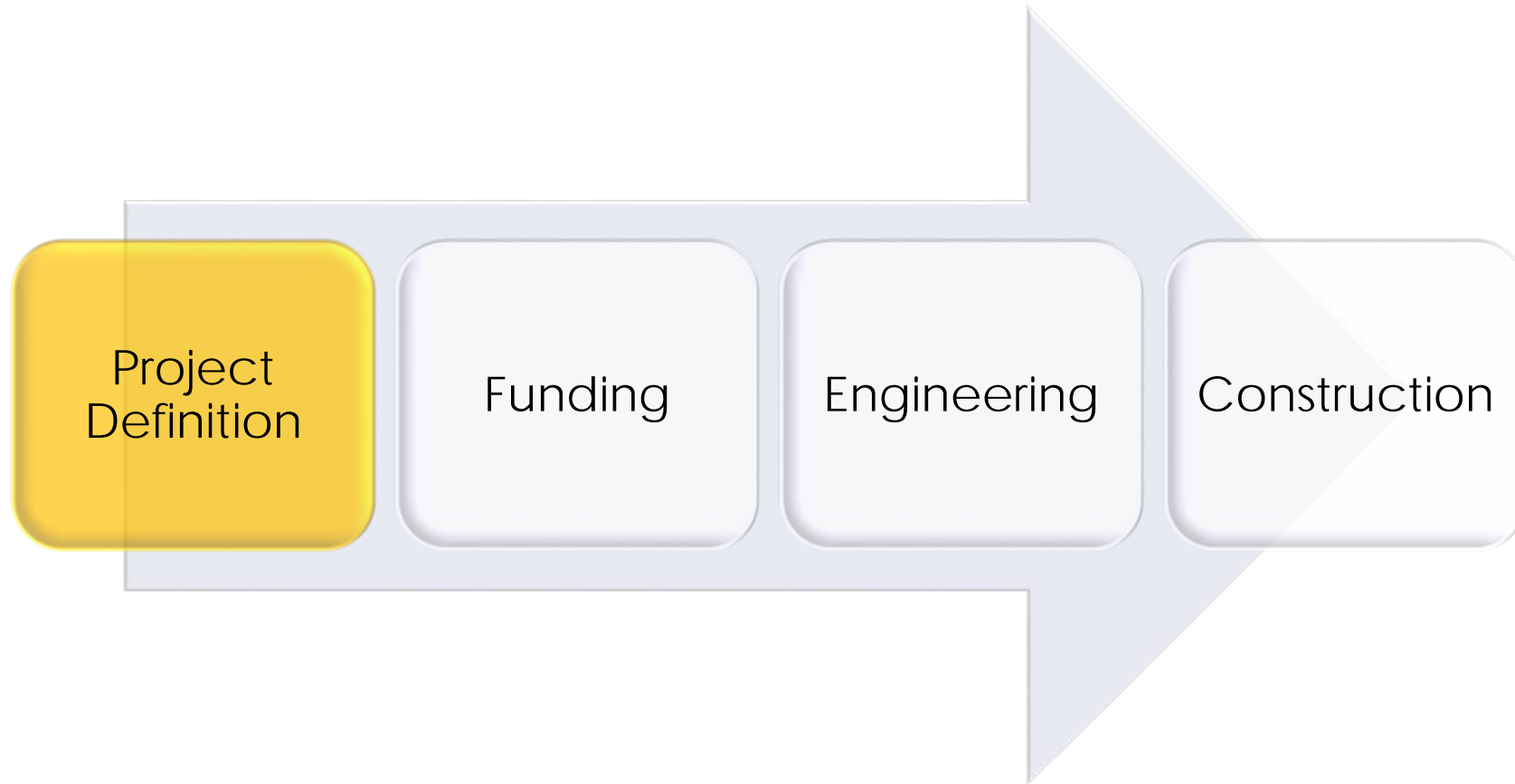


Project Background and Area



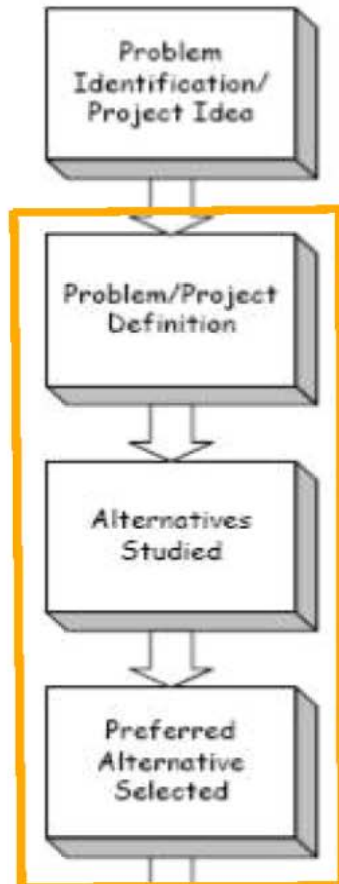
Study Focus: Bicycles and Pedestrians

Typical Project Process



Typical Project Process

Typical Stages in the Development and Funding of Transportation Projects



Problem Identification/Project Idea – The process starts when a particular transportation problem is identified or a new idea is put forward. This step can be initiated by members of the public, local elected officials, a private business, a community group, or a public agency. The CCMPO also often identifies problems and projects through its ongoing regional planning process.

Problem/Project Defined – The problem or project idea is brought to the CCMPO by local officials for definition and discussion (development of “purpose and need”).

Alternatives Studied – As part of the Unified Planning Work Program (UPWP), the CCMPO studies the problem/project idea and examines alternatives through our Technical Assistance and/or Scoping and Project Definition process. In some cases, depending on the scale and complexity of the project, the CCMPO can develop a “quick fix” to resolve the problem quickly.

Preferred Alternative Selected – Working with affected community and the public, the CCMPO facilitates the selection of a preferred alternative, which flows from the study process, for implementation.

Study Tasks and Timeline

- Task 1: Data gathering ,existing conditions analysis; **October-November**
- Task 2: Local concerns public meeting; **December**
- Task 3: Alternatives development, PAC meeting workshop; **January – February**
- Task 4: Alternative evaluation, draft scoping report, PAC meeting ; **March**
- Task 5: Alternative presentation, final report; **April - May**

Pearl St. Pedestrian and Bicycle Facilities

- Shared Use Path/ Sidewalks
- GMT Bus Route
- Marked and Signed Bike Lanes





VT Route 15 Existing Conditions

- Speed limit 40
- 10800 AADT
- Constructed 1934
- ROW width – 66 ft.(typ.)
- Limited environmental resources
- Aerial utilities on north side/VGS southside





VT Route 15 Existing Conditions

- Indian Brook Crossing – 12X6 Concrete Box
- Wetlands Class 2
- Shoulders and ROW widen for VT 289 approach





VT Route 15 Existing Conditions

- 8 foot shoulders
- Signalized Intersections
- Commercial and residential destinations to east





Public Input and Solutions

What are the most important conditions, concerns, issues or solutions?

- Safety
- Pedestrian operations
- Bicycle travel
- Congestion
- Transit operations
- Land use changes

Next Steps and Public Meeting

- Develop ideas/solutions to address concerns
- Review with PAC members
- Conduct public meeting to seek input on alternatives – **April/ June.**

Thank you!

Contact information

Christine Forde, CCPRC:
cforde@ccprcv.org

Greg Edwards, Stantec:
greg.edwards@stantec.com

Project Website: <https://www.ccrpcvt.org/our-work/transportation/current-projects/scoping/vt15-sidewalk-path-scoping-athens-drive-to-vt289/>