

VT 15 Susie Wilson Road to West St. Ext. Scoping Study

Public Meeting
January 22, 2018
Essex, Vermont



Essex, Vermont



Project Advisory Committee

- Essex Jct. Village Staff
 - Robin Pierce, Rick Jones
- Essex Town Staff
 - Dennis Lutz, Darren Schibler
- CCRPC
 - Christine Forde, Sai Sarepalli

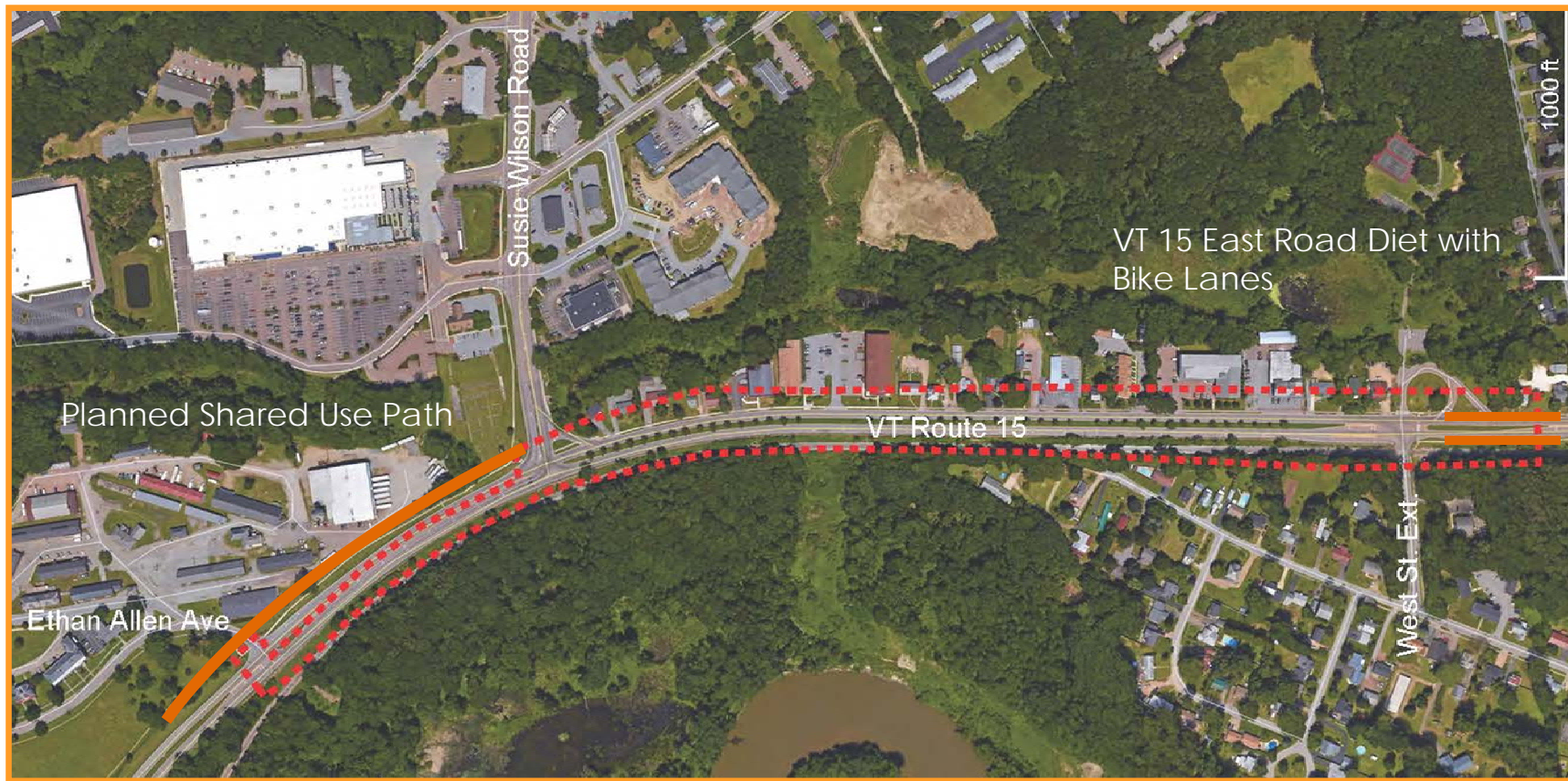
PAC Roles and Responsibilities

- Attend and participate in PAC meetings
- Review and comment on distributed materials
- Provide guidance, insight, and feedback throughout
- Update representing entities on study progress
- Indicate preferences for improvements

Tonight's Purpose

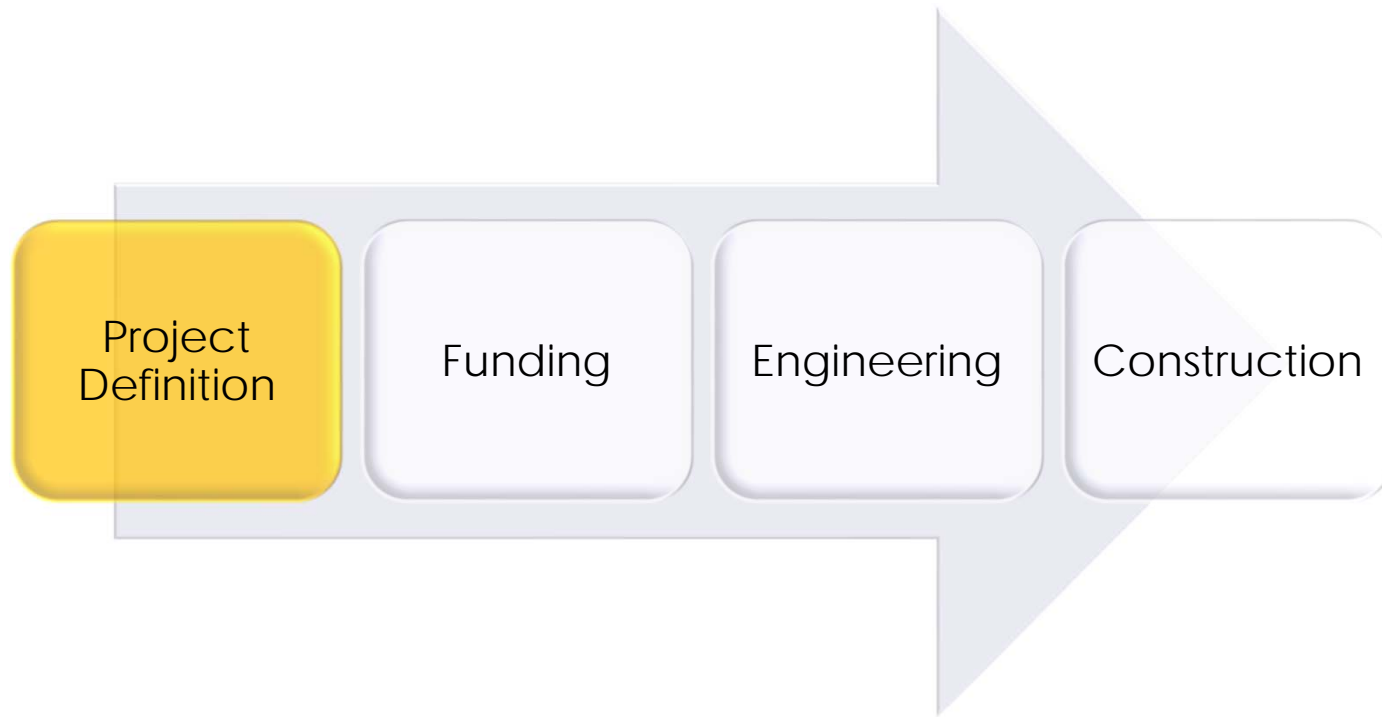
- Review project area
- Review project development process
- Discuss previous and on-going plans and studies
- Review existing conditions research
- **Gather feedback on issues, concerns, ideas - open public discussion**
- Discuss next steps

Project Area

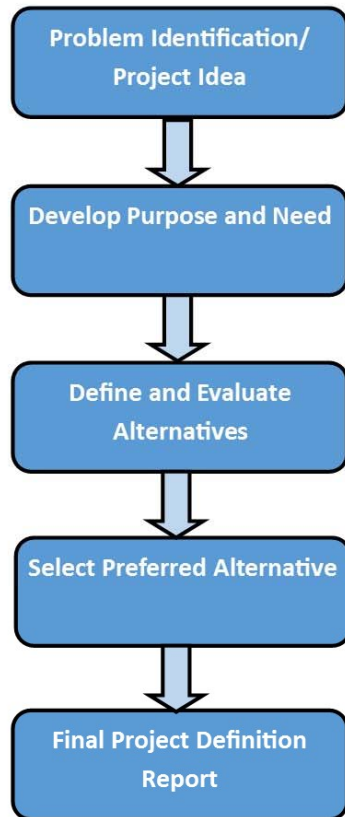


Study Focus: Bicycles and Pedestrians

Typical Project Process



Typical Stages in the Project Definition Process



Problem Identification/Project Idea - The process starts when a particular transportation problem is identified or a new idea is put forward. This step can be initiated by members of the public, local elected officials, a private business, a community group, or a public agency. CCRPC also often identifies problems and projects through its ongoing regional planning process.

Develop Purpose and Need - A Purpose and Need statement is a problem statement used to define goals and reasons for a project.

Define and Evaluate Alternatives - A set of possible solutions/alternatives to address the identified problem will be developed. Each alternative is evaluated for various performance criteria.

Select Preferred Alternative - A preferred alternative is selected while considering input from stakeholders, project working group, and the public.

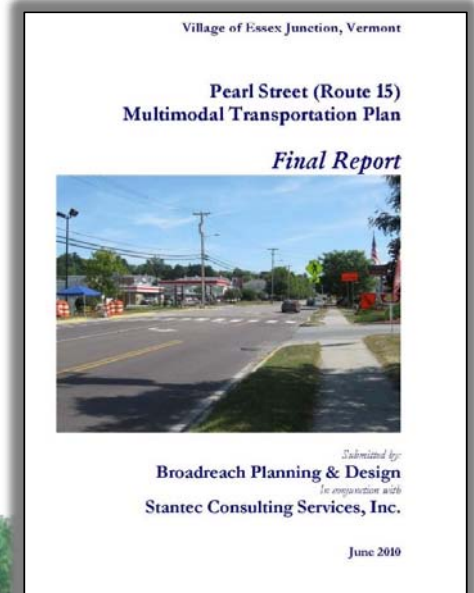
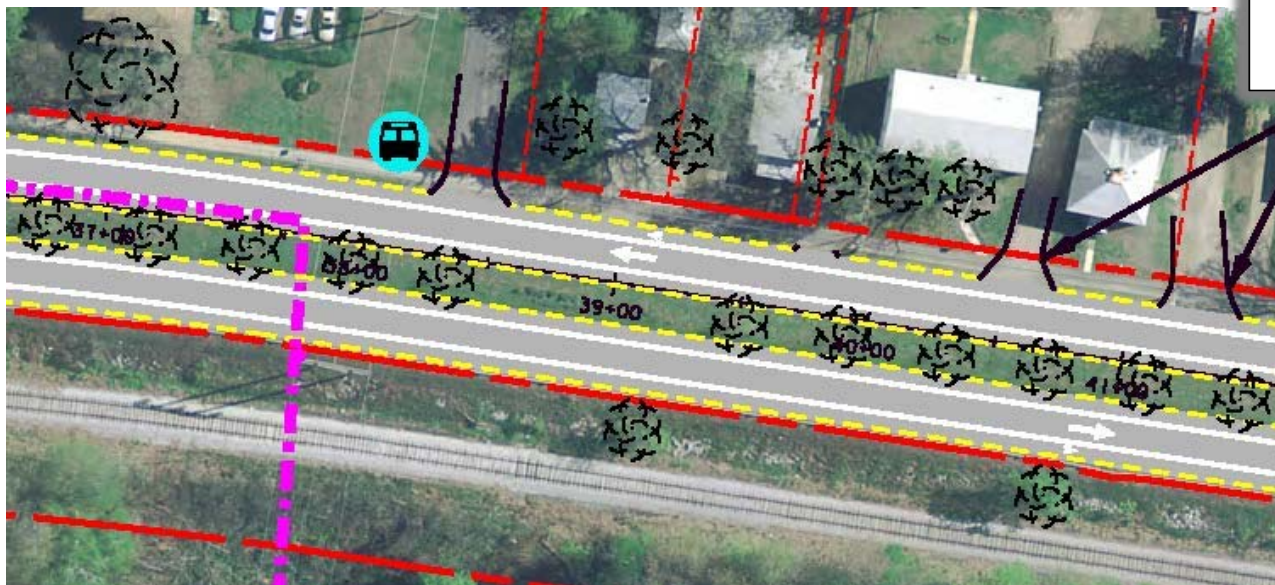
Final Report - A project definition report is finalized describing the process, public comments and input that were sought, and final recommendations.

Study Tasks and Timeline

- Task 1: Data gathering, existing conditions analysis; **October-November**
- Task 2: Local concerns public meeting; January
- Task 3: Alternatives development, PAC meeting and input; **February - March**
- Task 4: Alternative evaluation, draft scoping report, PAC meeting; **April**
- Task 5: Alternative presentation, final report; **May - June**

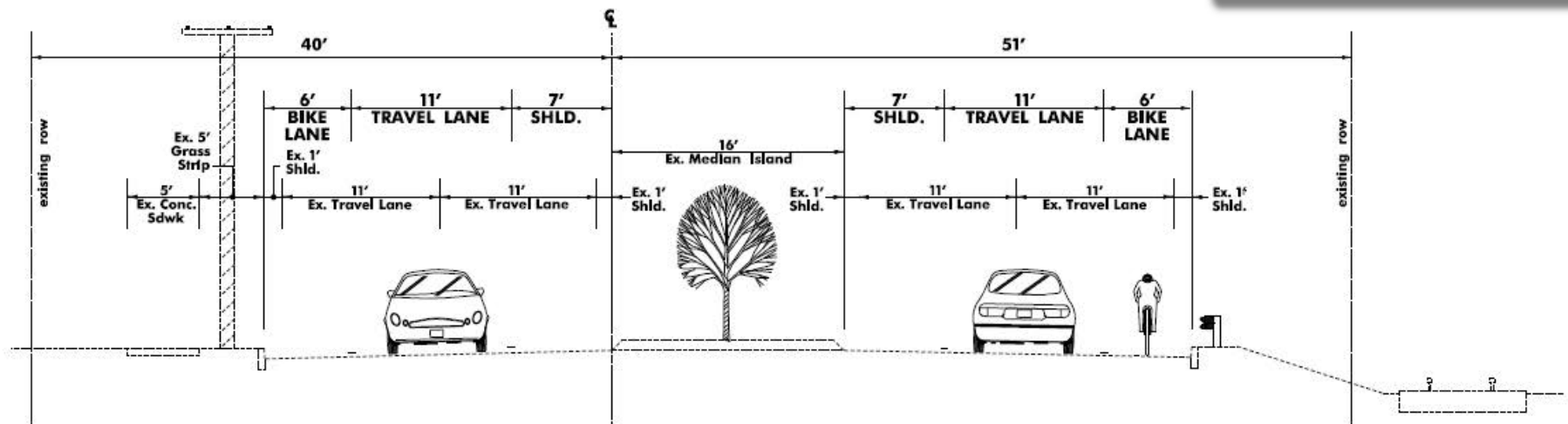
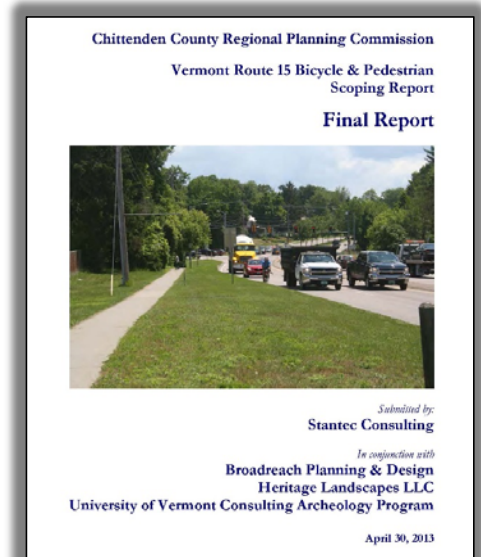
Past studies: Pearl St. Multimodal Transportation Plan

- Complete street corridor
- Gateway to Essex Junction
- Traffic Calming, Road Diet to 2 lanes with Bike lanes



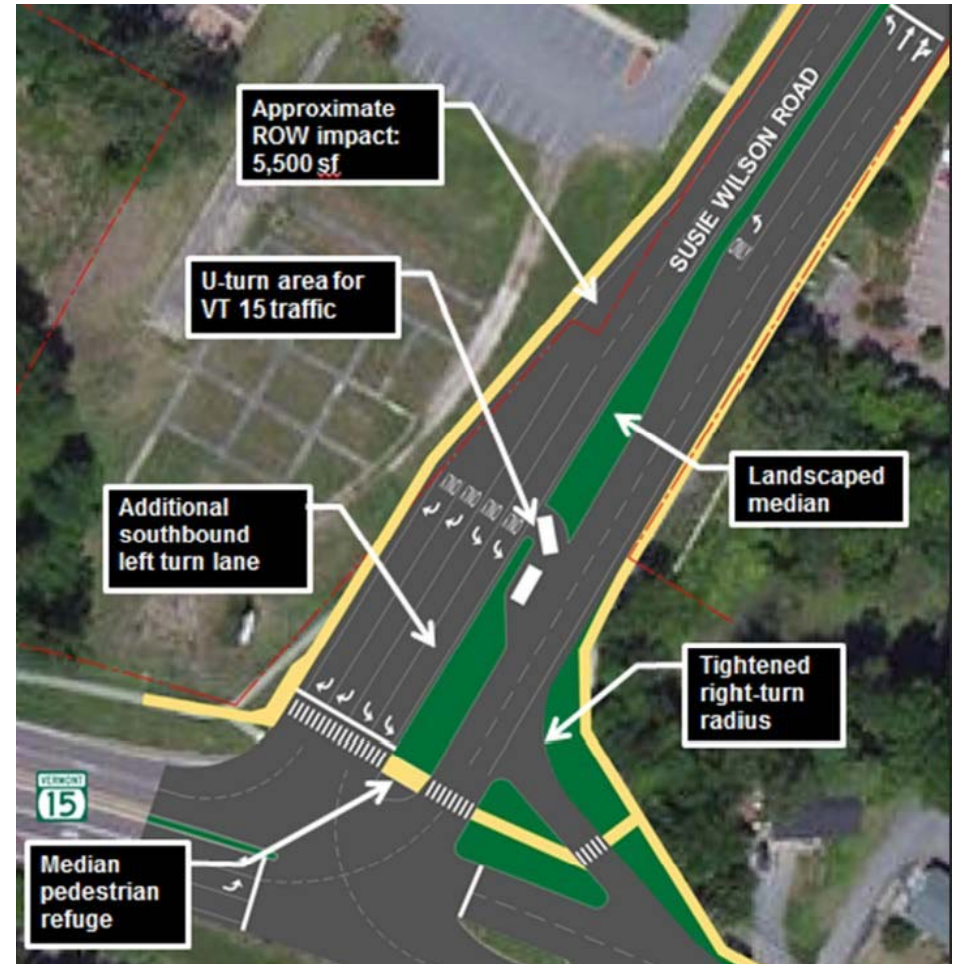
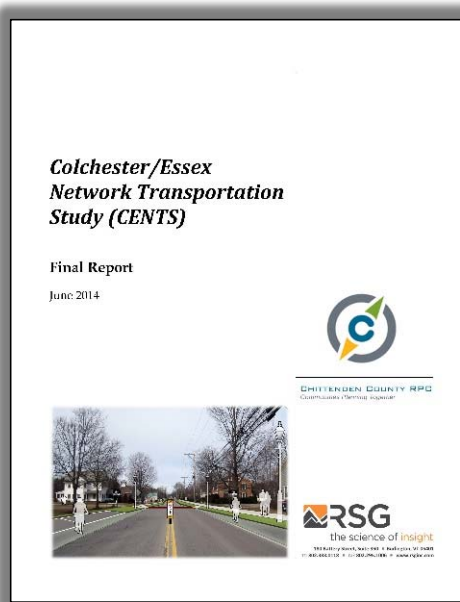
Past Studies: Vermont Route 15 Bicycle and Pedestrian Scoping Report

- Shared use path west of Susie Wilson
- On road bike lanes and road diet east of Susie Wilson



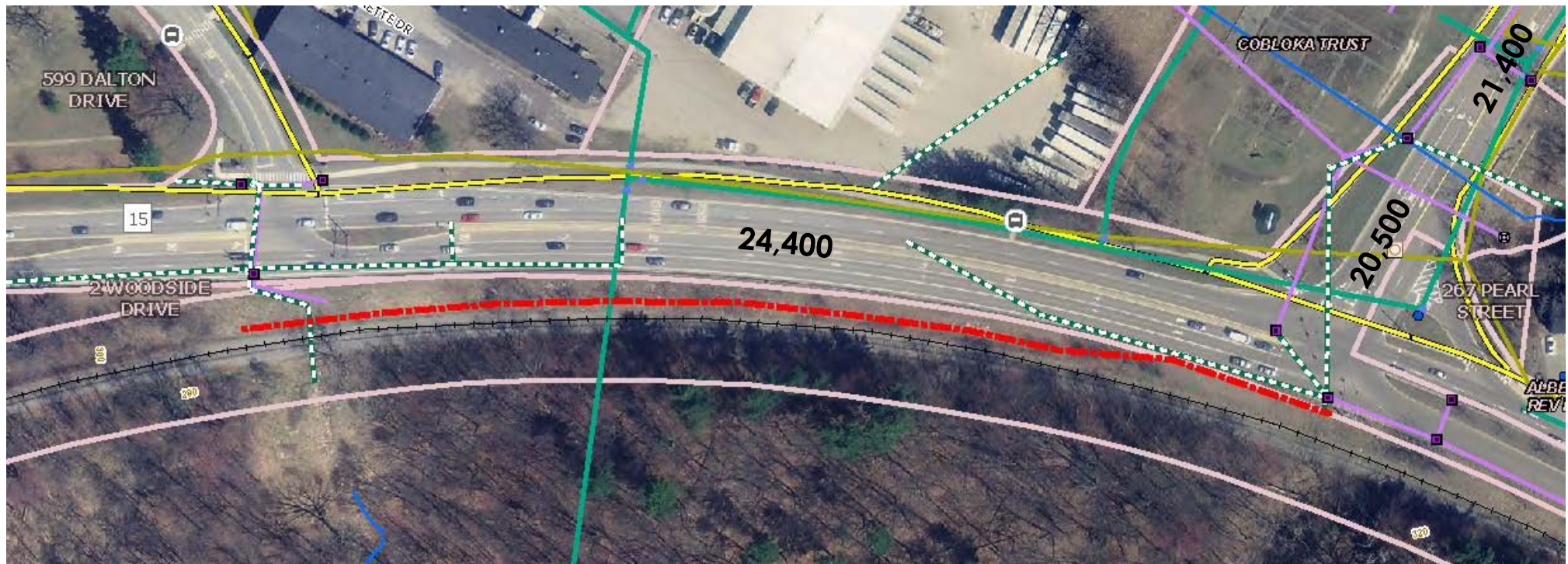
Colchester/Essex Network Transportation Study (CENTS)

- Widen Susie Wilson Intersection
- Additional Southbound Left Turn Lane



Existing Conditions

- Ethan Allen Ave to Susie Wilson



Susie Wilson to
225 Pearl St.



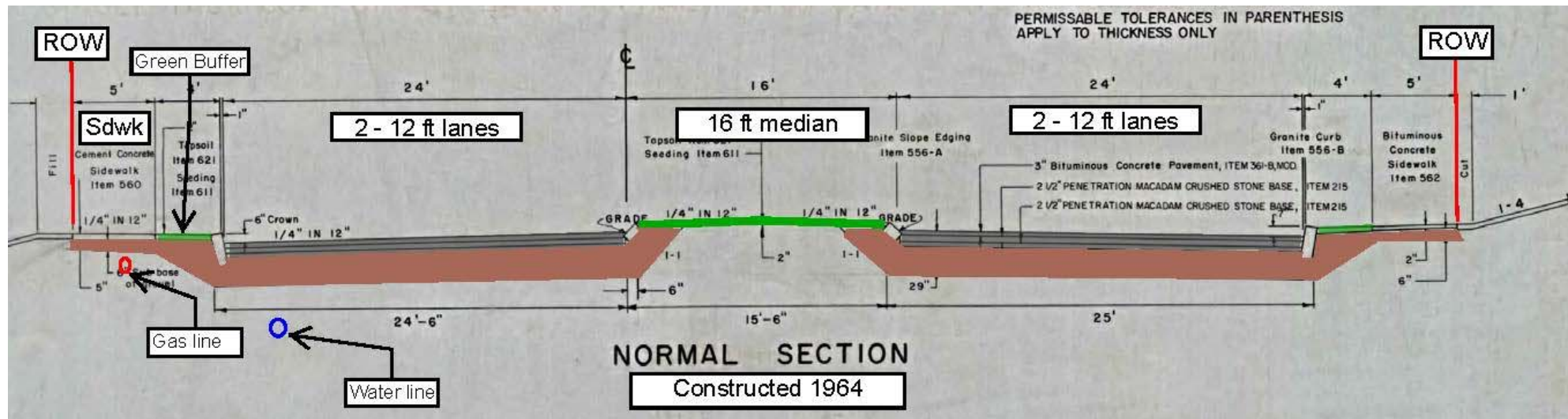
Existing Conditions

- Four 12 foot Lanes with 16 foot Median



Existing Conditions

- Constructed in 1964



Existing Conditions

Susie Wilson to
225 Pearl St.



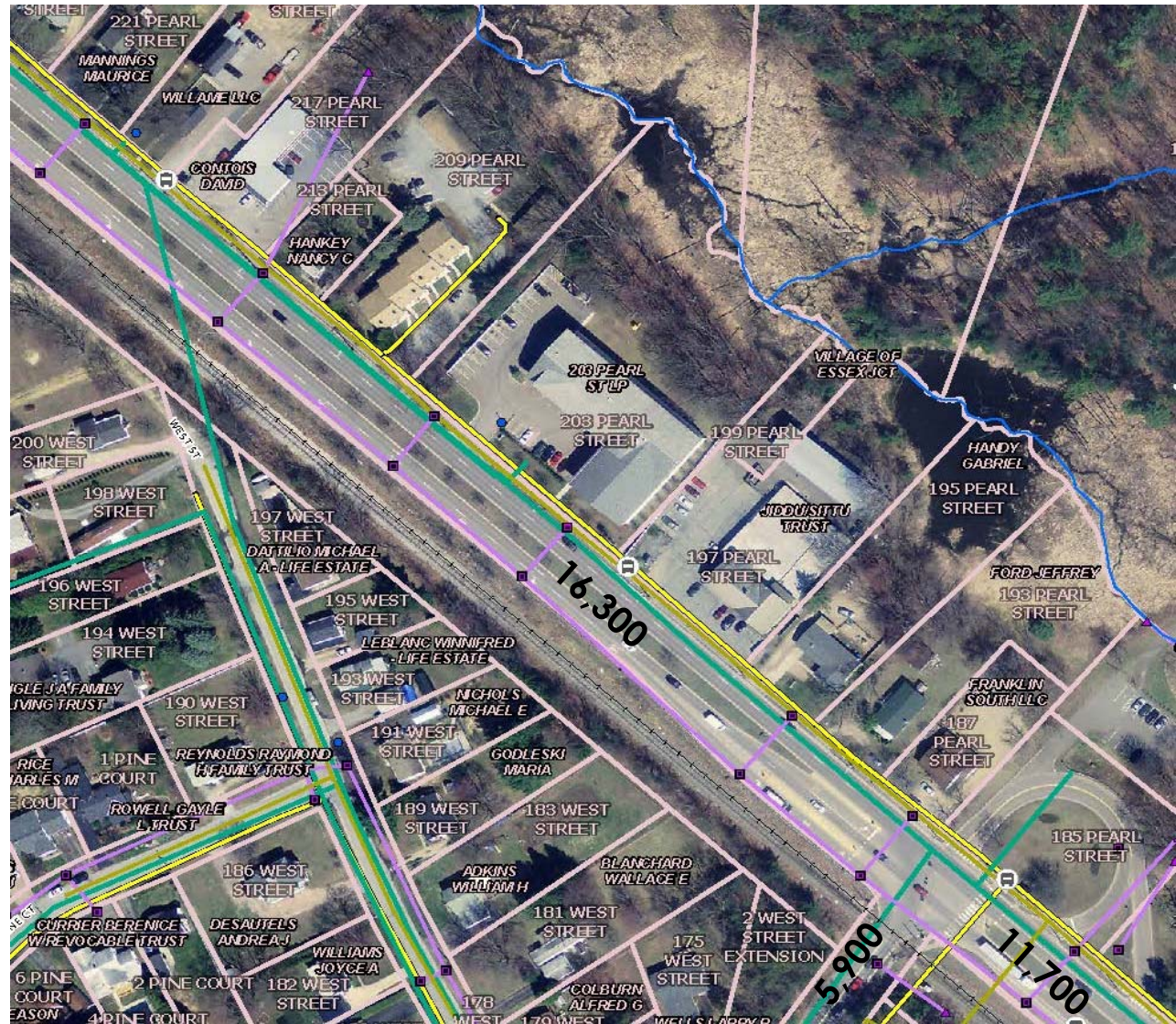
Existing Conditions

Susie Wilson to
225 Pearl St.



Existing Conditions

225 Pearl St. to
West St. Extension



Existing Conditions

225 Pearl St. to
West St. Extension

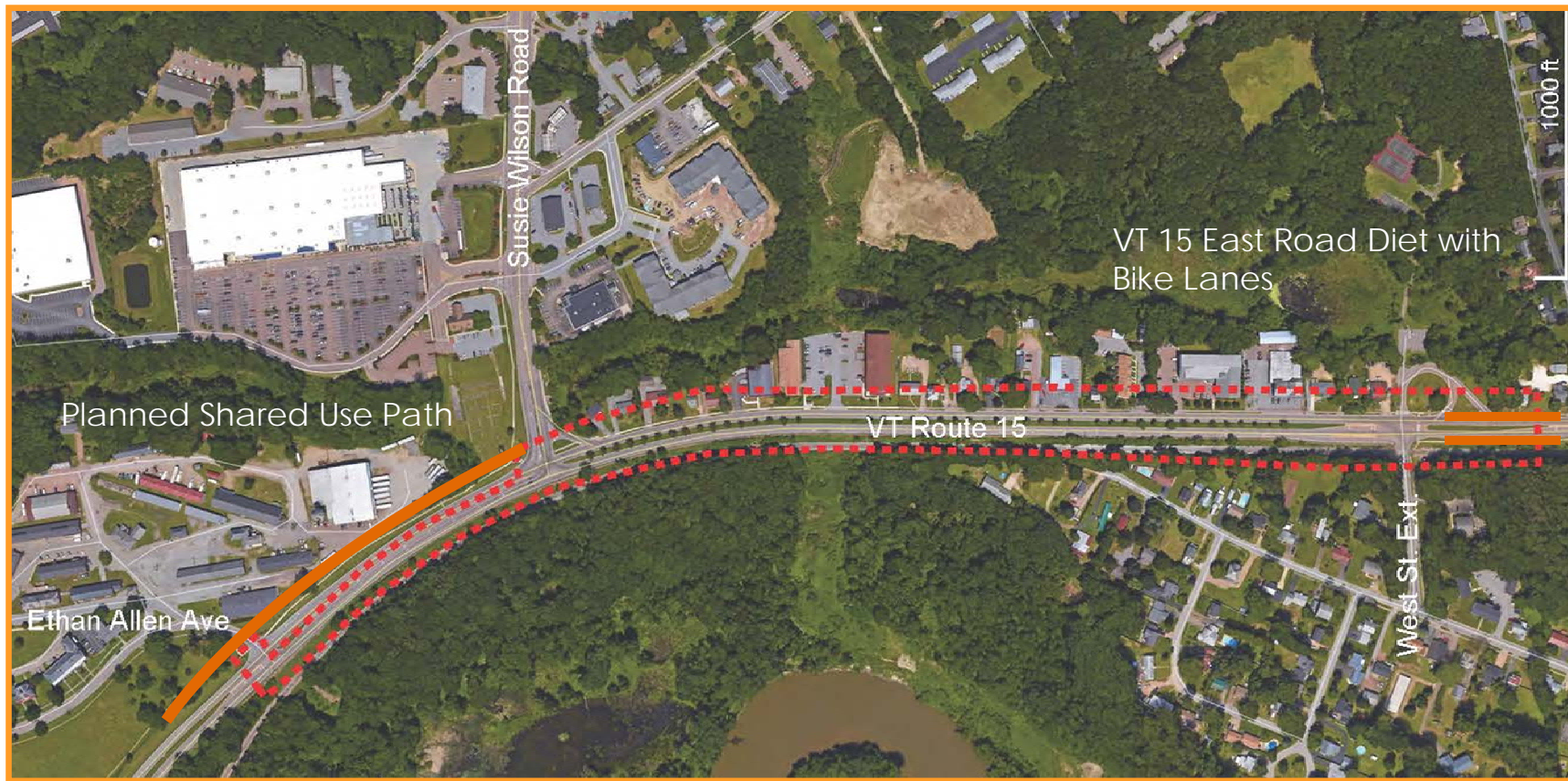


Public Input and Solutions

What are the most important conditions, concerns, issues or solutions?

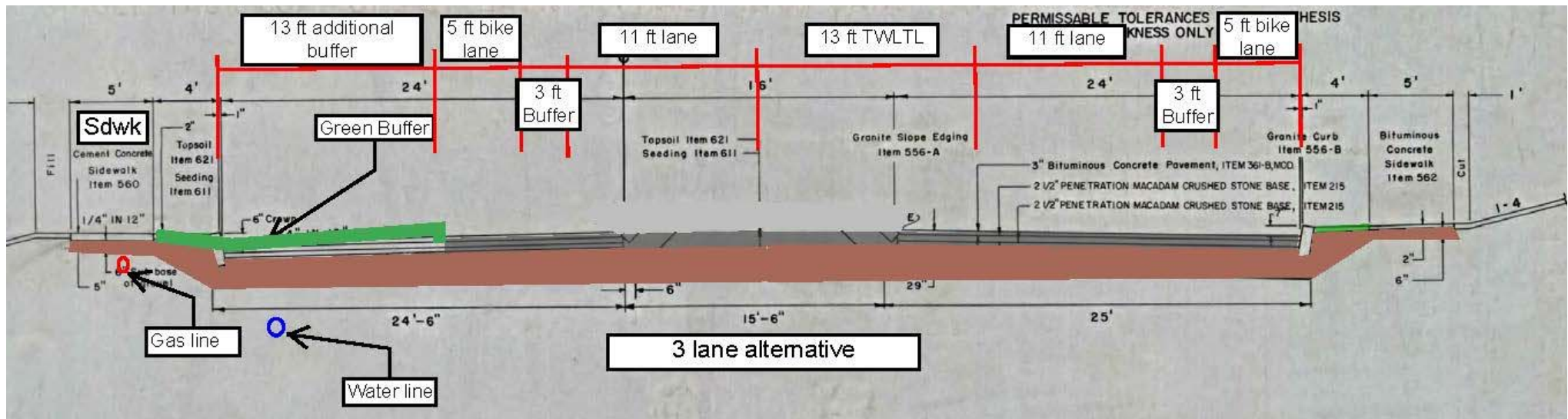
- Safety
- Pedestrian operations
- Bicycle travel
- Congestion
- Transit operations
- Land use changes

Project Area



Study Focus: Bicycles and Pedestrians

Alternative – 3 lanes



Next Steps

- Develop a Purpose and Need Statement
- Develop ideas/solutions to address concerns
- Review with PAC members
- Conduct public workshop to seek input on alternatives – **April/June.**

Thank you!

Christine Forde, CCRPC:

cforde@ccrpcvt.org

Greg Edwards, Stantec:

greg.edwards@stantec.com

Project Website:

<https://www.ccrpcvt.org/vt15-bicycle-pedestrian-study-ethan-allen-ave-west-street/>