

# WEAVER STREET POP-UP DEMO

Informational Meeting

May 22, 2018

## PRESENTATION OUTLINE

- Pilot Project Scope
- Background: Transportation Master Plan
- Frequently Asked Questions
- Public Input and Feedback

## PILOT PROJECT SCOPE

### **Purpose:**

Obtain community feedback and user information to evaluate bike and pedestrian facilities along Weaver Street.

### **Scope:**

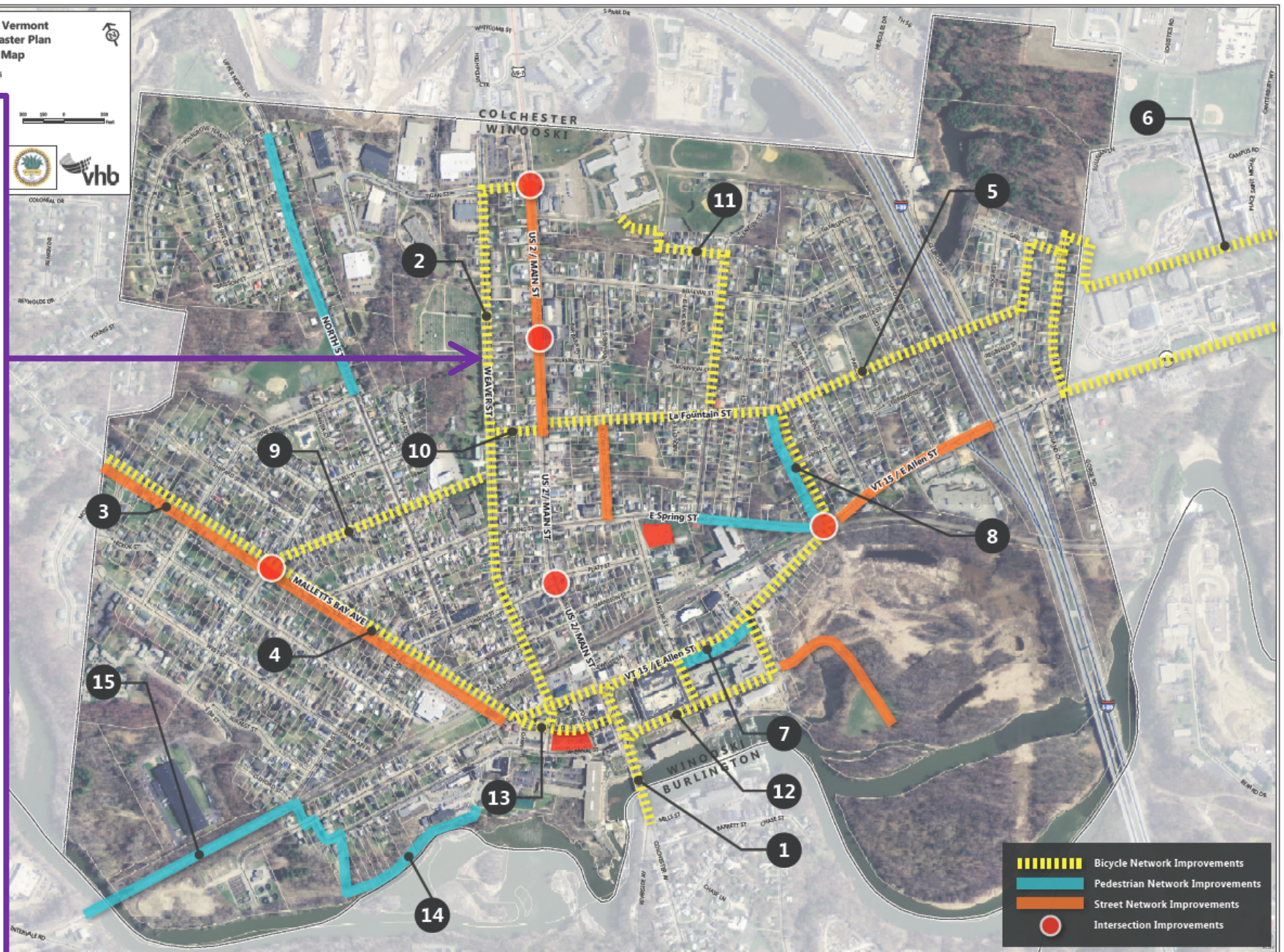
- Duration: June 1 – June 10
- Temporary (i.e. chalk paint) bi-directional bike lane along the west side of Weaver Street with associated signage.
- Temporary pedestrian crossing bump outs.
- Feedback signage.

## 2017 TRANSPORTATION MASTER PLAN - GOALS

- Promote a vibrant downtown with safe and connected sidewalks, efficient bicycle network, adequate parking to support local businesses, and attractive public spaces for the community to gather.
- Support thriving, well connected neighborhoods where slow vehicle speeds allow for safe walking and biking with access to neighborhood activity centers and local businesses.
- Reduce commuter vehicle traffic in residential areas of the City.
- Promote visually pleasing gateway corridors and neighborhood spaces that accommodate the safe and efficient multimodal movement of all people of all ages and abilities.

The TMP identified Weaver Street (which sees one-third to one-fifth the daily traffic of Main Street) as a potential north-south bicycle corridor.

The proposed concept would meet all TMP goals, but would have other impacts. Public feedback is needed!



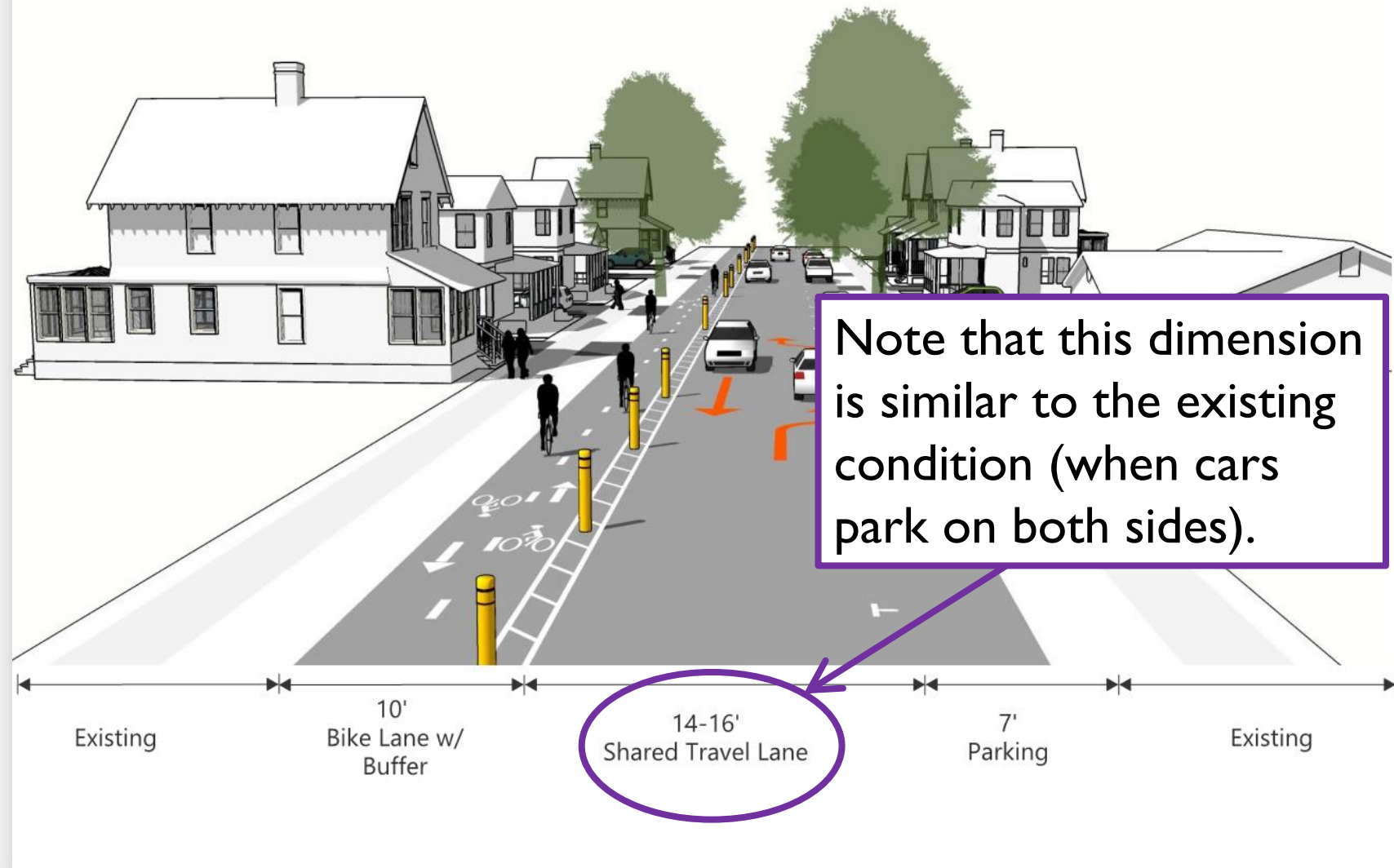
## POP UP DETAILS

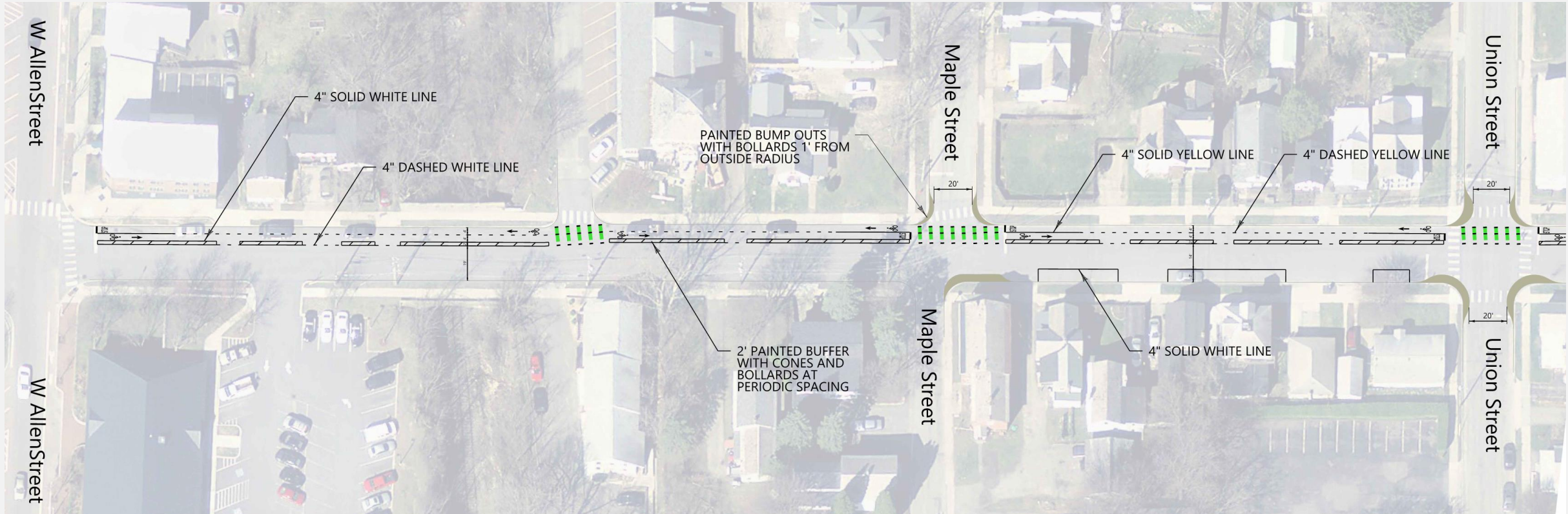
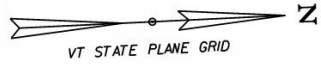
- Utilizes a narrow travel space with two-way vehicle traffic.
- The western side of Weaver Street will have a separated two-way bike facility.
- The eastern side of Weaver Street will have on-street parking.

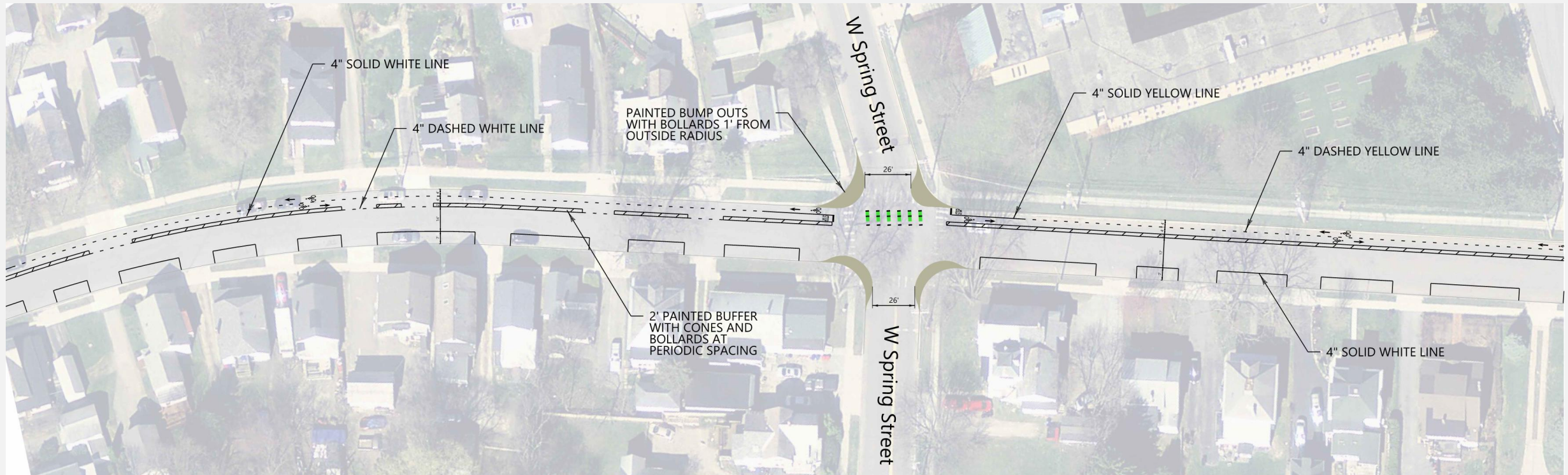
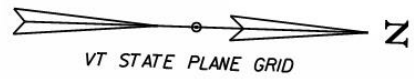


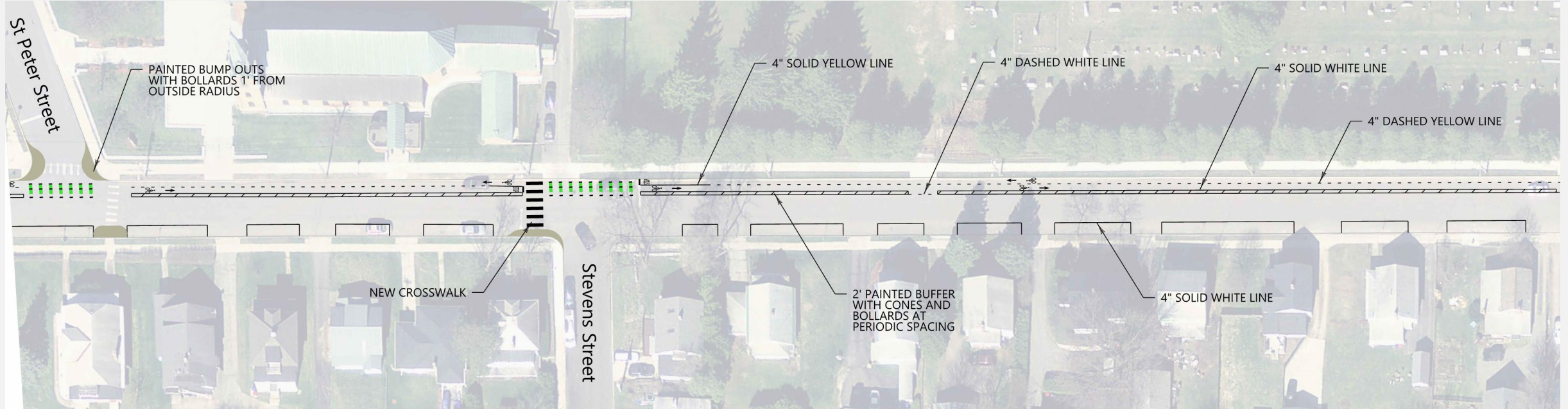
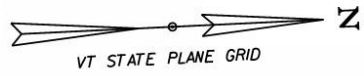
## HOW DO I DRIVE ON THE POP UP?

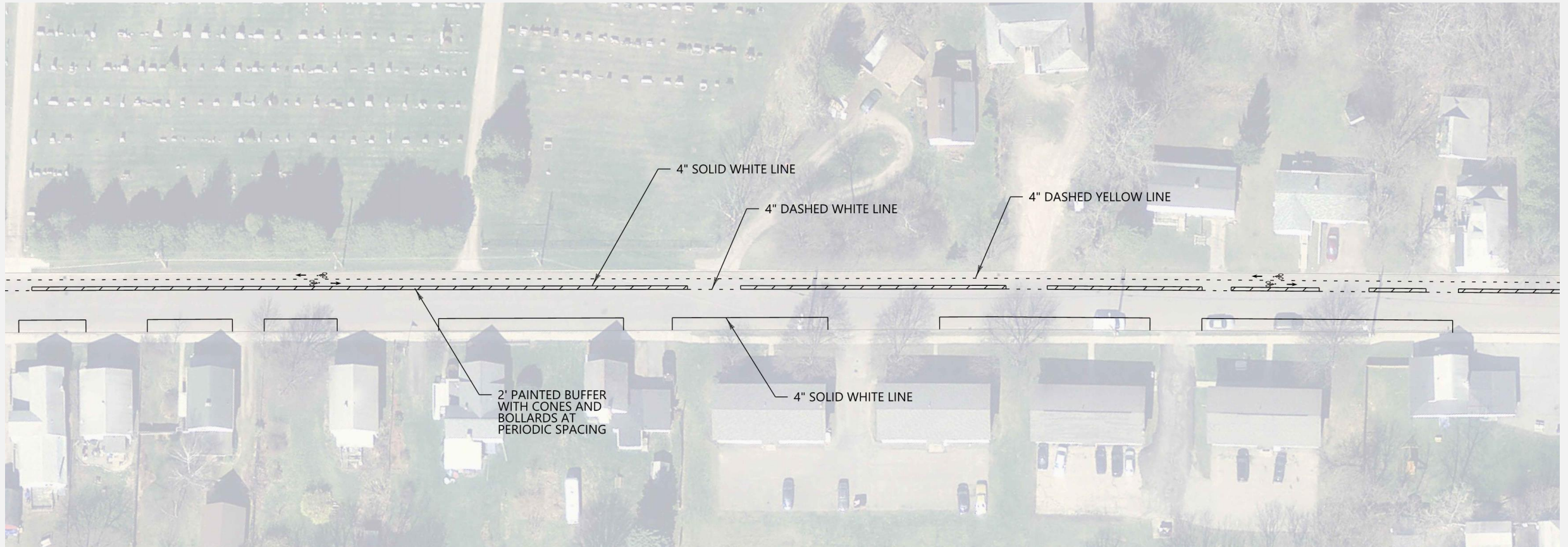
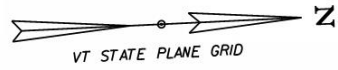
- If you are driving uphill and a downhill car approaches, yield to the downhill vehicle by pulling aside into an open parking space.
- If you are driving downhill and an uphill car approaches, you have the right-of-way to continue.

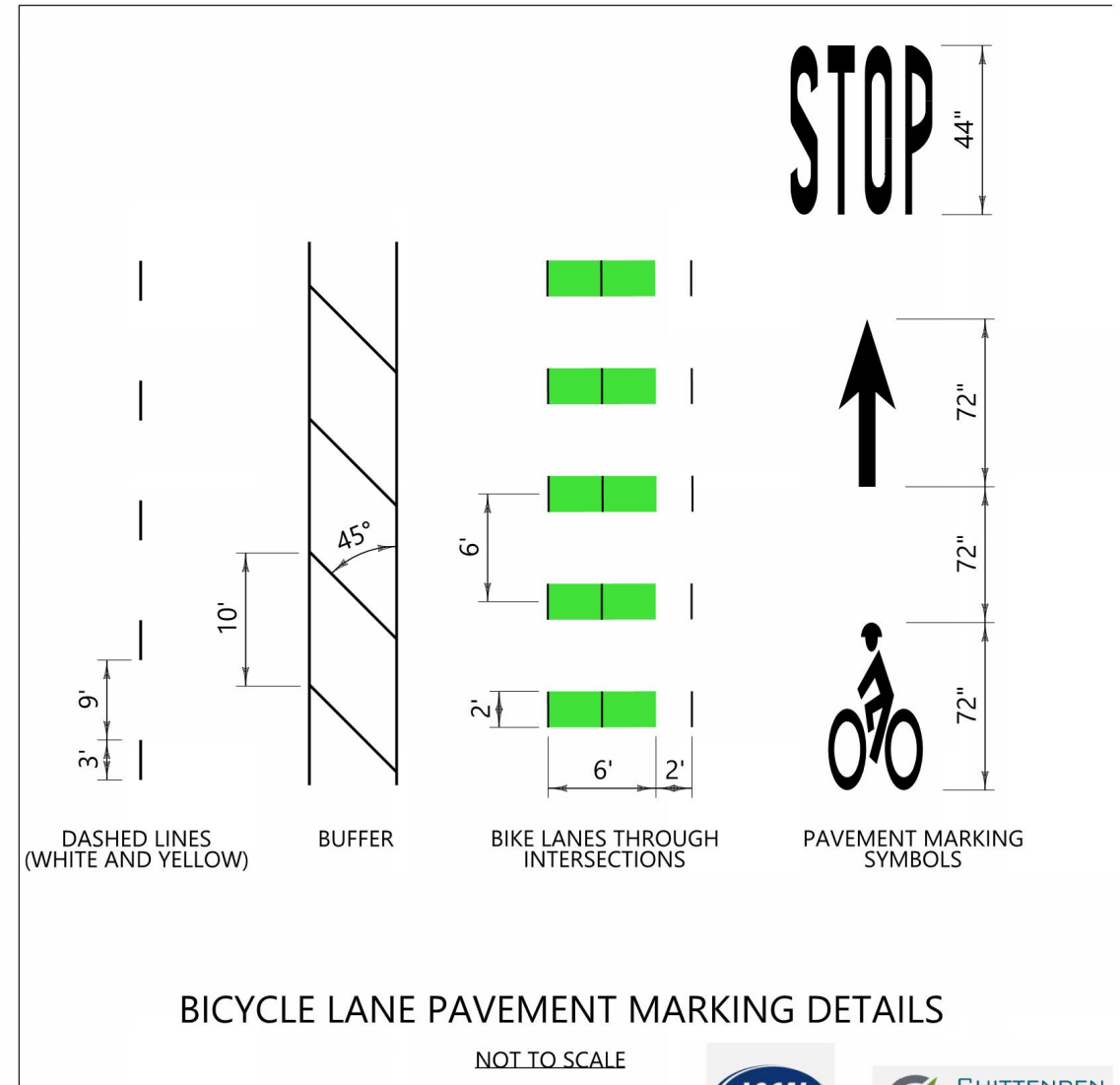
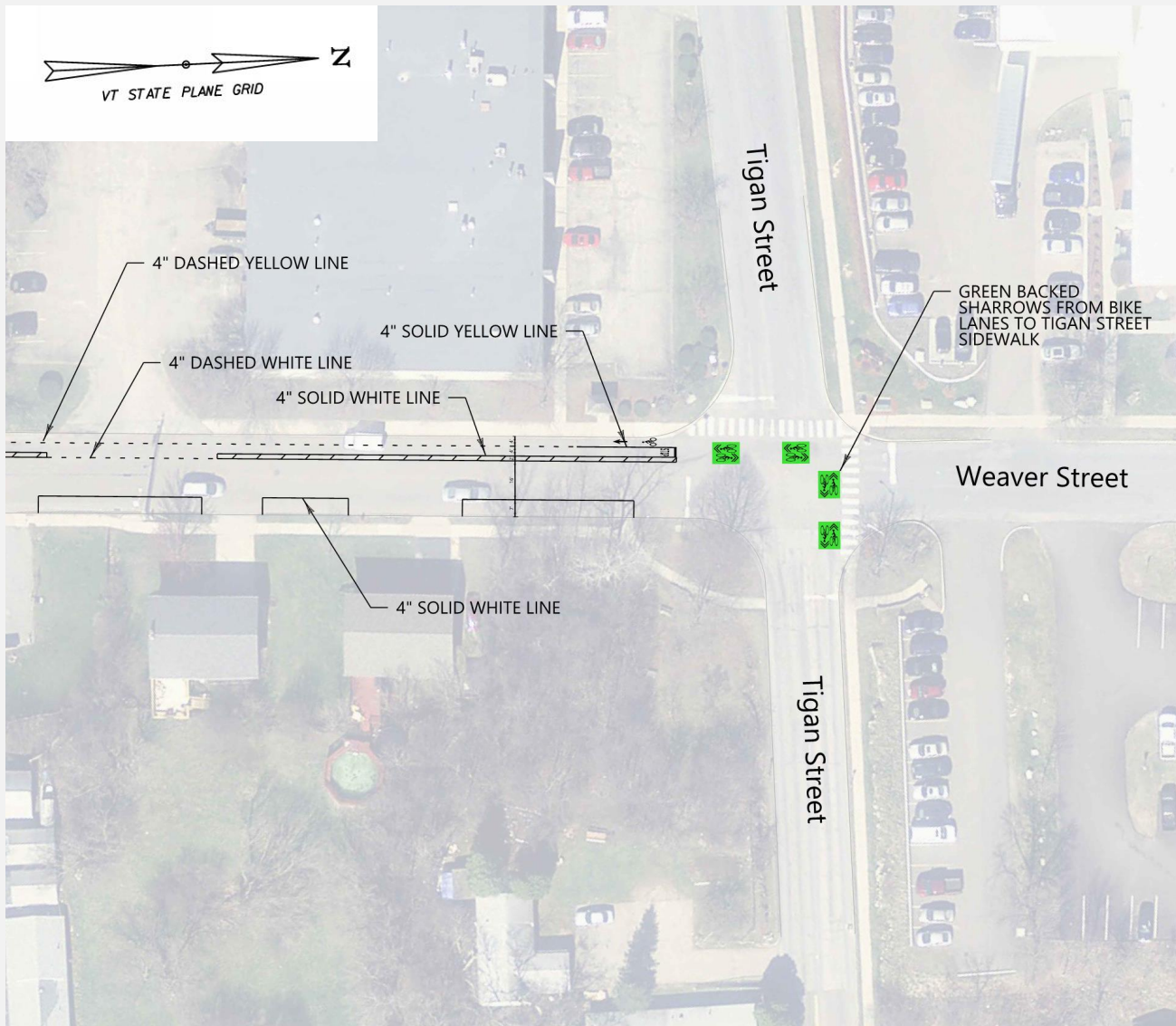












# WHEN IS THE DEMO HAPPENING?

- The demo will be in place from **June 1 – June 10.**



## FREQUENTLY ASKED QUESTIONS

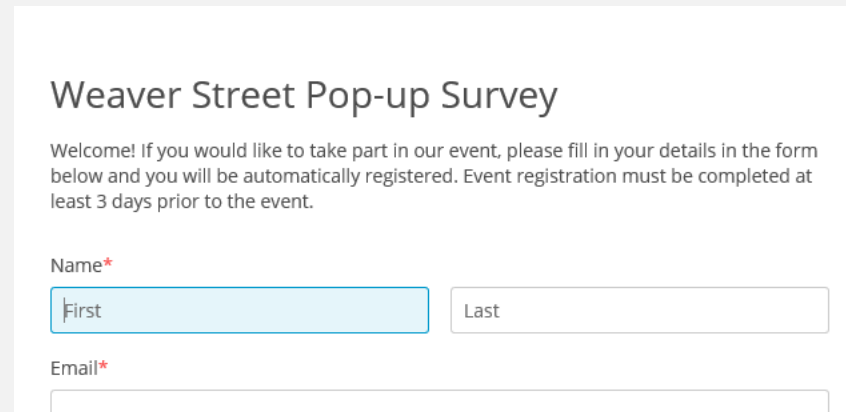
- Why is this happening now?
  - During public outreach for the Main Street project, there was strong support from residents for the City to pursue bicycle facilities on Weaver Street.
  - It was important to schedule this Demo before the end of the school year.
- Why Weaver Street?
  - The Transportation Master Plan identified Weaver Street as a potential location for a north-south bicycle corridor through Winooski. Traffic is lighter than on Main Street.
- Why is the Bike Lane on the west side of Weaver Street?
  - The west side of Weaver has fewer curb cuts and driveways, and therefore provides for a safer travel lane for users than the east side. Also, during most hours of the day, parking data indicate that more people park vehicles on the east side than the west side.

## FREQUENTLY ASKED QUESTIONS

- Where should I park my vehicle?
  - A parking lane will be marked on the east side of Weaver. Parking will be temporarily prohibited here while Public Works does line striping, but once complete, parking will be available on the east side of Weaver, north of Maple Street. We encourage residents who have driveways or off-street parking options to utilize these whenever possible.
  - During the Pop-Up Demo, we are asking the public not to park on the temporary bike lanes. The City will not ticket vehicles in violation of this request. However, the whole point of this 10-day Demo is to try out a new configuration of Weaver Street, and gather feedback from the public. So please, be considerate and mindful of others, try not to park on the bike lane, and send us your comments!

# FREQUENTLY ASKED QUESTIONS

- How do I send you my comments?
  - Love or hate the Demo, your feedback is important to us!
  - Please visit the CCRPC Project Website for a link to Local Motion's webpage.



Weaver Street Pop-up Survey

Welcome! If you would like to take part in our event, please fill in your details in the form below and you will be automatically registered. Event registration must be completed at least 3 days prior to the event.

Name\*

First  Last

Email\*

- Project Website: <https://www.ccrpcvt.org/winooski-weaver-street-pop-up/>

QUESTIONS, CONCERNS?