



Agenda
Executive Committee
Wednesday, June 6, 2018– 5:45 p.m.
Small Conference Room, CCRPC Offices
110 West Canal Street, Suite 202, Winooski, VT

1. Changes to the Agenda, Members' Items
2. Approval of May 2, 2018 Executive Committee Meeting Minutes* (Action)
3. Act 250 & Sec 248 Applications
 - a. GMP Airport Substation, South Burlington, Case #18-1423-AN* (Action)
 - b. ER Jericho Landfill Solar, Jericho, Case #18-1366-AN* (Action)
 - c. ER Pond Brook Solar, Colchester, Case #18-1367-AN* (Action)
 - d. Jolina Court Solar Carport, Richmond, Case #18-1391-AN* (Action)
 - e. 2800 Roosevelt Highway Town Solar, Colchester, Case #18-1329-AN* (Action)
 - f. 3943 Roosevelt Highway Solar, Colchester, Case #18-1329-AN* (Action)
4. CCRPC Organizational Development (Discussion)
5. Chair/Executive Director Report (Discussion)
 - a. Legislative update
 - b. VELCO Long-Range Transmission Plan
6. Agenda Review – June 20, 2018 Board Meeting* (Discussion)
7. Other Business (Discussion)
8. Executive Session – for the purpose of discussing personnel matters (Action)
9. Adjournment (Action)

*Attachments

NEXT MEETING – Joint Executive Committee – **Wed. July 18th, 2018; 5:45 p.m.**

CHITTENDEN COUNTY REGIONAL PLANNING COMMISSION
JOINT EXECUTIVE & FINANCE COMMITTEE MEETING MINUTES
DRAFT

DATE: Wednesday, May 2, 2018
TIME: 5:45 p.m.
PLACE: CCRPC Offices, 110 W. Canal Street, Suite 202; Winooski, VT 05404
PRESENT: Chris Roy, Chair Mike O'Brien, Vice-Chair
Barbara Elliott, At-Large John Zicconi, At-Large
Andy Montroll, Immediate Past Chair Jeff Carr (Via telephone)
STAFF: Charlie Baker, Executive Director Regina Mahony, Planning Program Manager
Forest Cohen, Senior Business Mgr. Emily Nosse-Leirer, Planner
Bernadette Ferenc, Trans. Business Mgr.

The meeting was called to order at 5:45 p.m. by the Chair, Chris Roy, after calling Jeff Carr to have him join the meeting.

1. Changes to the Agenda; Members' Items: Charlie asked to discuss the wetlands letter he sent them earlier under the Executive Director's report item 11.

2. Approval of April 4, 2018 Executive Committee Meeting Minutes. BARBARA ELLIOTT MADE A MOTION, SECONDED BY ANDY MONTROLL, TO APPROVE THE MINUTES OF APRIL 4, 2018 WITH CHANGES. Barbara gave Bernie several clarifying changes. MOTION CARRIED UNANIMOUSLY TO APPROVE THE MINUTES AS CORRECTED.

Mike O'Brien took over to Chair the Finance Committee portion of the meeting.

3. Approval of March 28, 2018 Finance Committee Meeting Minutes. JEFF CARR MADE A MOTION TO APPROVE THE MARCH 28, 2018 FINANCE COMMITTEE MEETING MINUTES. MIKE O'BRIEN SECONDED AND THE MOTION CARRIED UNANIMOUSLY.

4. Approve Quarterly Journal Entries (Jan-Mar 2018). JEFF CARR MADE A MOTION TO APPROVE THE QUARTERLY JOURNAL ENTRIES FOR JANUARY-MARCH 2018. MIKE O'BRIEN SECONDED AND THE MOTION CARRIED UNANIMOUSLY.

5. Review Financial Reports – FY 18 (July 2017-March 2018).

a. Balance Sheet/Income statement. Cash in checking (operating) \$147,436; Cash in savings (match) \$124,444; Cash in money market & CDs (reserve) 216,912; current assets over liabilities - \$627,318. Deferred income communities (match) is \$110,156 which should take us through the end of the fiscal year. Income notes – ACCD staff time are 83% expended through 75% of the year; transportation staff billing is at 72% expended. The ANR/HMGP river corridor project finished up in February and January was the last month with CCOA revenue/expense. We are under budget overall in our expense lines with just under 72% incurred. Net income through March is (\$47,684). We continue to expect to end the year better than the projected deficit of \$98,137.

b. Cash position/targets. Forest reported that cash is looking okay – we're about \$200,000 better than we projected. We have not had to take cash out of our reserves; and are hopeful we will not have to for the rest of the year.

6. Review Draft FY19 UPWP and Budget. Charlie noted that his memo reviewed the UPWP process, and he noted a couple of changes. We were asking for \$10,000 fee for Winooski Comprehensive Plan work, but that has been increased to \$26,000. The second change is to add funds for a new Brownfields grant. Those two changes will change the budget slightly. We're still showing a deficit of \$90,108, but we hope these new revenues will reduce the projected deficit. We have budgeted conservatively and we're hoping the deficit will be closer to \$40,000. Forest did a good job working with VTrans to get an approved indirect rate of 68.12% which is more in line with our actual rate and should help reduce the drastic swings we've had recently. JOHN ZICCONI MADE A MOTION, SECONDED BY BARBARA ELLIOTT, TO APPROVE THE FY19 DRAFT UPWP WITH THE INCREASE IN THE DOLLARS FOR THE WINOOSKI COMPREHENSIVE PLAN WORK AND TO ADD THE NEW BROWNFIELDS GRANT; AND RECOMMEND APPROVAL TO THE FULL BOARD. MOTION CARRIED UNANIMOUSLY. BARBARA ELLIOTT MADE A MOTION, SECONDED BY MIKE O'BRIEN, TO APPROVE THE DRAFT BUDGET AND RECOMMEND APPROVAL TO THE FULL BOARD. MOTION CARRIED UNANIMOUSLY. (Jeff Carr left the meeting.) Chris Roy resumed as chair.

7. Personnel Policy Update. Charlie noted that staff is recommending increasing the Health Saving Account contribution for two-person and family policies from \$4,000 to \$5,000 annually beginning July 1st. BARBARA ELLIOTT MADE A MOTION, SECONDED BY MIKE O'BRIEN, TO APPROVE THE INCREASE IN HSA CONTRIBUTION FROM \$4,000 TO \$5,000 FOR TWO-PERSON AND FAMILY POLICIES. MOTION CARRIED UNANIMOUSLY.

8. Review Draft Act 250/Section 248 Review Policy. Staff noted that the adoption of the 2018 ECOS Plan will necessitate changes in our review guidelines for Act 250 and Section 248 applications. These changes will provide guidance for CCRPC to review applications in light of adding "known constraints" and "possible constraints" to development to the ECOS Plan. The proposed changes differentiate between CCRPC review of Act 250 applications and Section 248 applications.

1. Act 250 review will remain largely unchanged. During Act 250 review, the known and possible constraints listed in the ECOS Plan are reviewed by municipalities and state agencies. CCRPC will defer to the relevant municipality or state agency with jurisdiction over the constraint, rather than submit separate comments on constraints. CCRPC will continue to focus review on land use and transportation.
2. During Section 248 review, some, but not all, known and possible constraints listed in the ECOS Plan are reviewed by municipalities and state agencies. CCRPC will defer to state agencies to review relevant constraints but will review and provide comments on local constraints when municipal plans do not have substantial deference. This review will take the form of submitting comments on advance notices and may include commenting on applications during hearings, intervening in hearings or requesting hearings on applications.

Under Section 248, applicants must distribute an "advance notice" at least 45 days before an application is submitted. CCRPC must submit any comments on the advance notice within 40 days of receiving it. Commenting gives CCRPC a chance to raise potential issues before the application is submitted to the Public Utilities Commission. Regina noted that this will be a greater workload for staff. Emily Nosse-Leirer then reviewed the proposed changes to the Guidelines and Standards and members suggested minor changes. This draft will be presented at the May board meeting, but we won't ask for adoption until July after the ECOS 2018 Plan is adopted. Members feel that responsibility for approval of any letters responding to the applicant be with the Executive Committee, the same as approving letters to for Act 250 applications.

9. Act 250/Section 248 Applications.

a. Kwiniaska Golf Club, Shelburne, Application #4C1312. Regina noted that this application only covers the changes to the golf course and not the bigger development planned for that site. Shelburne has not made a local decision on this yet, but we have no issues. BARBARA ELLIOTT MADE A MOTION TO APPROVE THE LETTER TO THE DISTRICT ENVIRONMENTAL COMMISSION. JOHN ZICCONI SECONDED AND THE MOTION CARRIED UNANIMOUSLY.

b. GMP Essex Solar/Storage, LLC, Essex, Case #18-0944-AN. This is the first letter to a developer in response to the 45-day notice of a Section 248 Petition to the Vermont Public Utility Commission. The letter gives some background that adoption of our 2018 ECOS Plan is anticipated and staff has reviewed the project using the policies that may be in place at the time of the filing. The letter also gives a brief introduction into the ECOS Energy Goals, suitability policies and the constraints found on the proposed site. Emily reviewed the constraints that exist on this site using ANR Natural Resources Atlas and ANR Biofinder and they are not ground tested. This project site is located east of where VT289 hits VT 117. After a brief discussion and review of the staff comment sheet, ANDY MONTROLL MADE A MOTION TO APPROVE THE LETTER TO GREEN MOUNTAIN POWER REGARDING THE ESSEX SOLAR/STORAGE SITE. BARBARA ELLIOTT SECONDED AND THE MOTION CARRIED UNANIMOUSLY.

c. Town of Colchester/Aegis Solar, Colchester, Case #18-09523-AN. This letter follows the same format of the previous one. Based on the preliminary site plan, it doesn't look like there are any constraints on or near the site, although staff used ANR Natural Resources Atlas and ANR Biofinder sites and they are not ground tested. This project is located off Malletts Bay Avenue on the Brigante farm and replaces the preferred site we had reviewed before. After discussion and suggestions for minor edits, BARBARA ELLIOTT MADE A MOTION TO APPROVE THE LETTER TO AEGIS RENEWABLE ENERGY, INC. BE APPROVED AS AMENDED. ANDY MONTROLL SECONDED AND THE MOTION CARRIED UNANIMOUSLY.

10. Draft Municipal Plan Review Policy. Staff prepared draft amendments to the Guidelines and Standards for Confirmation of Municipal Planning Processes and Approval of Municipal Plans to add language for Granting Determination of Energy Compliance. These changes are in anticipation of adoption of the ECOS 2018 Plan, and CCRPC receiving a Determination of Energy Compliance from the Department of Public Service. The plan is expected to be adopted at the June board meeting, but the Determination of Energy Compliance isn't expected until late summer, so final action on these changes will not be taken until September. A couple of minor edits were suggested.

11. Chair/Executive Director's Report.

a. Legislative Update. Charlie reported that we've been following S.260 regarding sustainable funding for clean water. However, the Governor has made it clear that he will not approve any funding increases, so we have no idea what will happen. There had been discussion in both the house and senate about regionalizing Burlington International Airport with CCRPC involvement, but it did not make it into the bill.

b. Letter re. comments on draft Wetlands General Permit #3-9026. Charlie presented a letter from Williston's stormwater coordinator giving comments on the Wetlands General permit proposed rules. There has been discussion and concern from MS4 communities and VTrans about the buffer around wetlands. There is general consensus that treating the water just outside the wetlands before it gets to the wetlands, helps and Williston's letter suggests increasing those buffers. This letter was discussed at the CWAC yesterday, but they did not take a position or make any recommendations. Charlie wondered if the Executive Committee wanted him to support these comments by writing a letter. Members feel we do not have enough information for repeating these comments, but agreed Charlie could write a letter urging the Department of Environmental Conservation, Watershed

1 Management Division to look into the concerns of the MS4 communities and VTrans about the
2 wetland buffers. Members were okay with that.

3
4 12. Agenda Review – May 16, 2018 board meeting. Members reviewed and amended the board
5 agenda. Tom Gustafson of UVM will make a presentation. Andy Montroll will report on FY19
6 executive nominations.

7
8 13. Other Business. It was noted that the first Wednesday of July is the 4th. Members were inclined to
9 move the meeting back to July 11th or wait until the 18th, just prior to the July Board meeting. A final
10 decision will be made at the June 6th Executive Committee meeting.

11
12 14. Executive Session. MIKE O'BRIEN MADE A MOTION, SECONDED BY BARBARA ELLIOTT, TO GO INTO
13 EXECUTIVE SESSION AT 7:20 P.M. WITH CHARLIE PRESENT TO DISCUSS PERSONNEL ISSUES. MOTION
14 CARRIED UNANIMOUSLY.

15 BARBARA ELLIOTT MADE A MOTIION SECONDED BY ANDY MONTROLL, TO COME OUT OF EXECUTIVE
16 SESSION WITH NO ACTION AT 7:35 P.M. MOTION CARRIED UNANIMOUSLY.

17
18 15. Adjournment. BARBARA ELLIOTT MADE A MOTION, SECONDED BY ANDY MONTROLL, TO ADJOURN
19 THE MEETING AT 7:35 P.M. THE MOTION CARRIED UNANIMOUSLY.

20
21 Respectfully submitted,

22
23 Bernadette Ferenc

June 7, 2018

Eric Phaneuf, Director of Business Development
Aegis Renewable Energy, Inc.
340 Mad River Park, Suite 6
Waitsfield, VT 05673
ephaneuf@aegis-re.com

RE: Advance Notice of Petition for Aegis Renewable Energy/Town of Colchester's Proposed 150 kW Project in Colchester, Vermont – 2800 Roosevelt Highway (Case #18-1329-AN)

Dear Mr. Phaneuf:

Chittenden County Regional Planning Commission has received the 45-day notice of a Section 248 Petition to be filed with the Vermont Public Utility Commission for a 150kW solar project at 2800 Roosevelt Highway in Colchester, VT. As you know, CCRPC is currently in the final stages of drafting a new regional plan (the *Draft 2018 Chittenden County ECOS Plan*), with an anticipated adoption date of June 20, 2018, and an effective date of July 25, 2018. We will be seeking a Determination of Energy Compliance from the Vermont Department of Public Service after the plan is adopted. Given the timing of this application, we have reviewed it based on the policies in the *Draft 2018 Chittenden County ECOS Plan*. We hope this letter serves to alert you to the policies that may be in place at the time of you filing your petition.

ECOS Energy Goal

CCRPC finds that this project meets the intent of the Energy Goal (Goal #17) of the *2018 ECOS Plan*: "Move Chittenden County's energy system toward a cleaner, more efficient and renewable system that benefits health, economic development, and the local/global climate by working towards the State's Comprehensive Energy Plan goals."

Strategy 2, Action 4b of the ECOS Plan states "CCRPC supports the generation of new renewable energy in the County to meet the Vermont Comprehensive Energy Plan's goals of using 90% renewable energy by 2050, in a manner that is cost effective and respects the natural environment". Development of this solar facility helps implement this action. The Plan's suitability policies help determine whether projects are cost effective, and the Plan's constraint policies help determine whether projects respect the natural environment.

Suitability Policies

The *2018 ECOS Plan* recommends the location of renewable energy generation facilities in appropriate locations, as defined by the policies in Strategy 2, Action 4b. The project as proposed meets the following suitability policies:

- The project is located proximate to existing 3-phase power and is in an area with adequate grid capacity.
- The project location has been endorsed by the Colchester Select Board in a letter to the Public Utilities Commission dated August 23, 2017.
- The project is located outside of Colchester's Designated Growth Center and Designated New Town Center.

CCRPC finds that the general location of this project meets the suitability policies of the *2018 ECOS Plan*.

Constraints

The 2018 ECOS Plan states that ground mounted renewable energy generation is constrained in certain areas due to state and local restrictions on development. Strategy 2, Action 4b states: "Site renewable energy generation to avoid state and local known constraints and to minimize impacts to state and local possible constraints, as defined in Strategy 3, Action 1.f, and Strategy 4, Action 1.f, and Action 2.e. Renewable energy generation sited on existing structures or parking lots complies with this policy."

Based on the site plan included in the advance notice, CCRPC has reviewed the constraints that exist on the site of the proposed project. This location avoids most constraints. Based on our review of this project's location using the ANR Natural Resources Atlas, it appears that there are DEC River Corridors, Wetlands and Surface Water Buffers and Slopes over 20% on the parcel, but not impacted by this project. We mention the presence of these nearby constraints simply for your information, given that our review is based on data that have not been verified by on-the-ground studies. **CCRPC is not requested further information or action related to these constraints.**

However, it appears that some constraints may be impacted by this project.

- Agricultural Soils: Based on the agricultural soils layer shown on the ANR Natural Resources Atlas, it appears that statewide agricultural soils will be impacted by this project. CCRPC will defer to the Vermont Agency of Agriculture, Food and Markets in determining the impact of development on agricultural soils. **CCRPC is not requesting further information or action related to this constraint at this time.**
- Highest Priority Forest Blocks and Highest Priority Wildlife Crossings: Based on the information shown for these constraints on the ANR Biofinder Map, it appears that this project may impact highest priority forest blocks and highest priority wildlife crossings. CCRPC will defer to the Vermont Fish and Wildlife Department in determining the impact of this development on highest priority forest blocks and highest priority wildlife crossings. **CCRPC is not requesting further information or action related to this constraint at this time.**

These comments are based on information currently available; we may have additional comments as the process continues. We understand that the project may change between the advance notice and the final application. CCRPC will review the project location again after the final application is submitted to confirm our initial findings above.

Please feel free to contact me with any questions.

Sincerely,

Charlie Baker
Executive Director

cc: CCRPC Board

REC340TP72-XV, REC SOLAR
QTY. 612 340W

ELECTRICAL CHARACTERISTICS (STC)

- MAX. POWER CURRENT (IMP): 8.84A
- MAX. POWER VOLTAGE (VMP): 38.50V
- SHORT CIRCUIT CURRENT (ISC): 9.32A
- OPEN CIRCUIT VOLTAGE (VOC): 46.30V
- SIZE: 78.9"x39.4"x1.8"
- WEIGHT: 61.7LBS.

SUNNY TRIPOWER CORE11US
QTY. 3 50.0KW

INPUT (DC)

- MAX. DC POWER MODULE: 51,000W
- MAX DC VOLTAGE: 1000V
- RATED MPPT VOLTAGE RANGE: 500-800 VDC
- MPPT OPERATING VOLTAGE RANGE: 500-1000 VDC
- MAX. INPUT CURRENT: 120 ADC

OUTPUT (AC)

- RATED AC POWER OUTPUT: 50,000 W
- MAX OUTPUT CURRENT: 64 A
- NOMINAL OUTPUT FREQUENCY: 60 HZ

LINE LEGEND

WETLAND BUFFER

WETLAND

HATCH AND SYMBOL LEGEND

WETLANDS

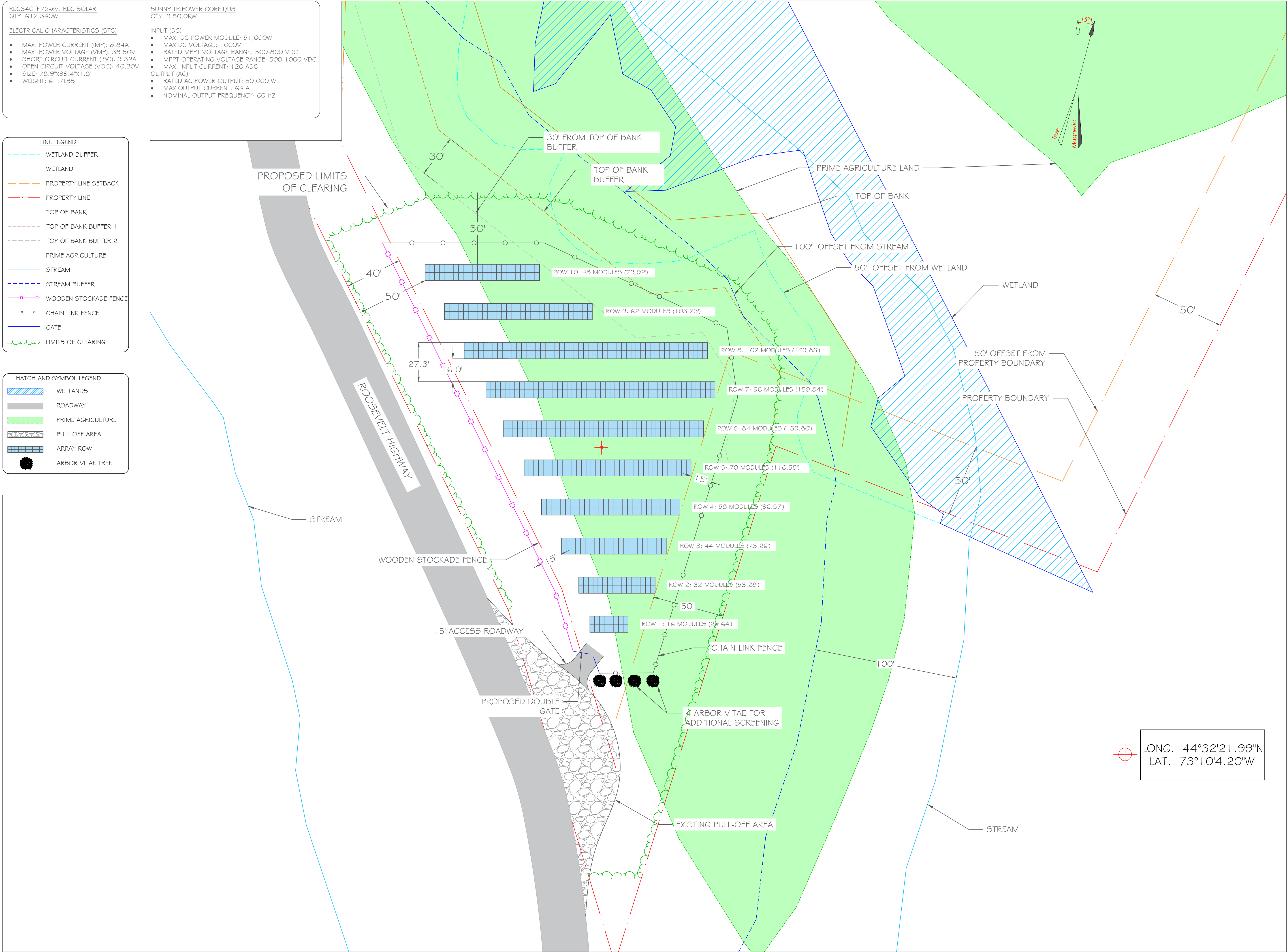
ROADWAY

PRIME AGRICULTURE

PULL-OFF AREA

ARRAY ROW

ARBOR VITAE TREE



aegis

RENEWABLE ENERGY

ATTN: TOM FLYNN - TFLYNN@AEGIS-RE.COM
340 MAD RIVER PARK, SUITE 6
WAITSFIELD, VT 05673
802-560-0055
WWW.AEGIS-RE.COM

REVISIONS

NO.	DESCRIPTION	DATE	BY
1	POSSIBLE WETLAND ADDED	09/19/17	KB
2	PERMITTING CHANGES	05/08/18	KB

Attachment A - Site Plan & Aesthetic Mitigation Plan

USE OF THESE DRAWINGS

1. UNLESS OTHERWISE NOTED, THESE DRAWINGS ARE INTENDED FOR PRELIMINARY PLANNING. COORDINATION WITH OTHER DISCIPLINES OR UTILITIES, AND/OR APPROVAL FROM REGULATORY AUTHORITIES, THEY ARE NOT INTENDED AS CONSTRUCTION DRAWINGS UNLESS NOTED AS SUCH OR MARKED APPROVED BY A REGULATORY AUTHORITY.

2. BY USE OF THESE DRAWINGS BY PARTIES OTHER THAN AEGIS RENEWABLE ENERGY FOR CONSTRUCTION OF THE PROJECT, THE ENTITY REPRESENTS THAT THEY HAVE REVIEWED, APPROVED, AND ACCEPTED THE DRAWINGS, OBTAINED ALL NECESSARY PERMITS, AND HAVE MET WITH ALL APPLICABLE PARTIES/DISCIPLINES, INCLUDING, BUT NOT LIMITED TO, CONTRACT DOCUMENTS, SPECIFICATIONS, OWNER/CONTRACTOR AGREEMENTS, BUILDING AND MECHANICAL PLANS, PRIVATE AND PUBLIC UTILITIES, AND OTHER PERTINENT PERMITS FOR CONSTRUCTION.

3. AEGIS AND THEIR ENGINEER, ARE RESPONSIBLE FOR FINAL DESIGN AND LOCATION OF BUILDINGS SHOWN, INCLUDING AN AREA MEASURED FIVE (5) FEET AROUND ANY BUILDING AND COORDINATING FINAL UTILITY CONNECTIONS SHOWN ON THESE PLANS.

4. PRIOR TO USING THESE PLANS FOR CONSTRUCTION LAYOUT, THE USER SHALL CONTRACT AEGIS RENEWABLE ENERGY TO ENSURE THE PLAN CONTAINS THE MOST CURRENT REVISIONS.

5. THESE DRAWINGS ARE SPECIFIC TO THE PROJECT AND ARE NOT TRANSFERABLE. AS INSTRUMENTS OF SERVICE, THESE DRAWINGS, AND COPIES THEREOF, FURNISHED BY AEGIS RENEWABLE ENERGY ARE ITS EXCLUSIVE PROPERTY. CHANGES TO THE DRAWINGS MAY ONLY BE MADE BY AEGIS RENEWABLE ENERGY. IF ERRORS OR OMISSIONS ARE DISCOVERED, THEY SHALL BE BROUGHT TO THE ATTENTION OF AEGIS RENEWABLE ENERGY IMMEDIATELY.

6. IT IS THE USER'S RESPONSIBILITY TO ENSURE THIS COPY CONTAINS THE MOST CURRENT REVISIONS. IF UNSURE, PLEASE CONTACT AEGIS RENEWABLE ENERGY

PLAN TYPE - USE

CONCEPTUAL - FOR INITIAL SIZING-LAYOUT PURPOSES ONLY

PROJECT TITLE AND DETAILS

ROOSEVELT HIGHWAY ARRAY
2800 ROOSEVELT HIGHWAY
COLCHESTER, VT 05446
208.1 KW DC
150.0 KW AC

SHEET TITLE

SITE AND AESTHETIC MITIGATION PLAN

DATE: 08/04/2017

SCALE: 1"=30'

PROJECT NUMBER: 17T0CPV03

DRAWN BY: KB

PROJECT ENGINEER: TAF

APPROVED BY: TAF

FILE LOCATION: ENGINEERING / CONCEPT

C2-01.1



LEGEND

- Parcels (Standardized)
- Buildings (E911)
- Roads
 - Interstate
 - Principal Arterial
 - Minor Arterial
 - Major Collector
 - Minor Collector
 - Local
 - Not part of function Classification S
- Waterbody
- Stream
- Parcels (Non-Standardized)



1: 9,875

May 30, 2018



NOTES

Map created by CCRPC staff using ANR's Natural Resources Atlas for reference only

502.0 0 251.00 502.0 Meters

WGS_1984_Web_Mercator_Auxiliary_Sphere

© Vermont Agency of Natural Resources

1" = 823 Ft. 1cm = 99 Meters

THIS MAP IS NOT TO BE USED FOR NAVIGATION

DISCLAIMER: This map is for general reference only. Data layers that appear on this map may or may not be accurate, current, or otherwise reliable. ANR and the State of Vermont make no representations of any kind, including but not limited to, the warranties of merchantability, or fitness for a particular use, nor are any such warranties to be implied with respect to the data on this map.

June 7, 2018

Eric Phaneuf, Director of Business Development
Aegis Renewable Energy, Inc.
340 Mad River Park, Suite 6
Waitsfield, VT 05673
ephaneuf@aegis-re.com

RE: Advance Notice of Petition for Aegis Renewable Energy's Proposed 500kW Solar Array near 3943 Roosevelt Highway in Colchester, VT (Case #18-1329-AN)

Dear Mr. Phaneuf:

Chittenden County Regional Planning Commission has received the 45-day notice of a Section 248 Petition to be filed with the Vermont Public Utility Commission for a 500 kW solar array located 1,100 feet west of 3943 Roosevelt Highway in Colchester, VT. As you know, CCRPC is currently in the final stages of drafting a new regional plan (the *Draft 2018 Chittenden County ECOS Plan*), with an anticipated adoption date of June 20, 2018, and an effective date of July 25, 2018. We will be seeking a Determination of Energy Compliance from the Vermont Department of Public Service after the plan is adopted. Given the timing of this application, we have reviewed it based on the policies in the *Draft 2018 Chittenden County ECOS Plan*. We hope this letter serves to alert you to the policies that may be in place at the time of you filing your petition.

ECOS Energy Goal

CCRPC finds that this project meets the intent of the Energy Goal (Goal #17) of the *2018 ECOS Plan*: "Move Chittenden County's energy system toward a cleaner, more efficient and renewable system that benefits health, economic development, and the local/global climate by working towards the State's Comprehensive Energy Plan goals."

Strategy 2, Action 4b of the ECOS Plan states "CCRPC supports the generation of new renewable energy in the County to meet the Vermont Comprehensive Energy Plan's goals of using 90% renewable energy by 2050, in a manner that is cost effective and respects the natural environment". Development of this solar facility helps implement this action. The Plan's suitability policies help determine whether projects are cost effective, and the Plan's constraint policies help determine whether projects respect the natural environment.

Suitability Policies

The *2018 ECOS Plan* recommends the location of renewable energy generation facilities in appropriate locations, as defined by the policies in Strategy 2, Action 4b. The project as proposed meets the following suitability policies:

- The project is located in an area with adequate grid capacity.
- The project is outside of any state designated centers or historic districts.

CCRPC finds that the general location of this project meets the suitability policies of the *2018 ECOS Plan*.

Constraints

The 2018 ECOS Plan states that ground mounted renewable energy generation is constrained in certain areas due to state and local restrictions on development. Strategy 2, Action 4b states: "Site renewable energy generation to avoid state and local known constraints and to minimize impacts to state and local possible constraints, as defined in Strategy 3, Action 1.f, and Strategy 4, Action 1.f, and Action 2.e. Renewable energy generation sited on existing structures or parking lots complies with this policy."

CCRPC has reviewed the constraints that exist on the site of the proposed project. Based on our review of this project's location using the ANR Natural Resources Atlas, it appears that there are rare, threatened and endangered species, DEC River Corridors, Class II Wetlands, wetland buffers, highest priority forest blocks and slopes over 20% near the proposed array, but not impacted by this project. We mention the presence of these nearby constraints simply for your information, given that our review is based on data that have not been verified by on-the-ground studies. **CCRPC is not requesting further information or action related to these constraints at this time.**

However, it appears that some constraints may be impacted by this project.

- **Agricultural Soils:** Based on the agricultural soils layer shown on the ANR Natural Resources Atlas, it appears that statewide agricultural soils will be impacted by this project. CCRPC will defer to the Vermont Agency of Agriculture, Food and Markets in determining the impact of development on agricultural soils. **CCRPC is not requesting further information or action related to this constraint at this time.**

These comments are based on information currently available; we may have additional comments as the process continues. We understand that the project may change between the advance notice and the final application. CCRPC will review the project location again after the final application is submitted to confirm our initial findings above.

Please feel free to contact me with any questions.

Sincerely,

Charlie Baker
Executive Director

cc: CCRPC Board

ELECTRICAL EQUIPMENT INFORMATION

REC350TP25 72, REC SOLAR
QTY: 2,040 350W

ELECTRICAL CHARACTERISTICS (STC)

- MAX. POWER CURRENT (IMP): 9.00A
- MAX. POWER VOLTAGE (VMP): 38.90V
- SHORT CIRCUIT CURRENT (ISC): 9.40A
- OPEN CIRCUIT VOLTAGE (VOC): 46.70V
- SIZE: 78.9"x39.4"x1.2"
- WEIGHT: 46.5LBS.

UTILITY INFORMATION
GREEN MOUNTAIN POWER

SUNNY TRIPOWER CORE 1/US
QTY: 10 50.0KW

INPUT (DC)

- MAX. DC POWER MODULE: 51,000W
- MAX DC VOLTAGE: 1,000V
- RATED MPPT VOLTAGE RANGE: 500-800 VDC
- MPPT OPERATING VOLTAGE RANGE: 500-1,000 VDC
- MAX. INPUT CURRENT: 120 ADC

OUTPUT (AC)

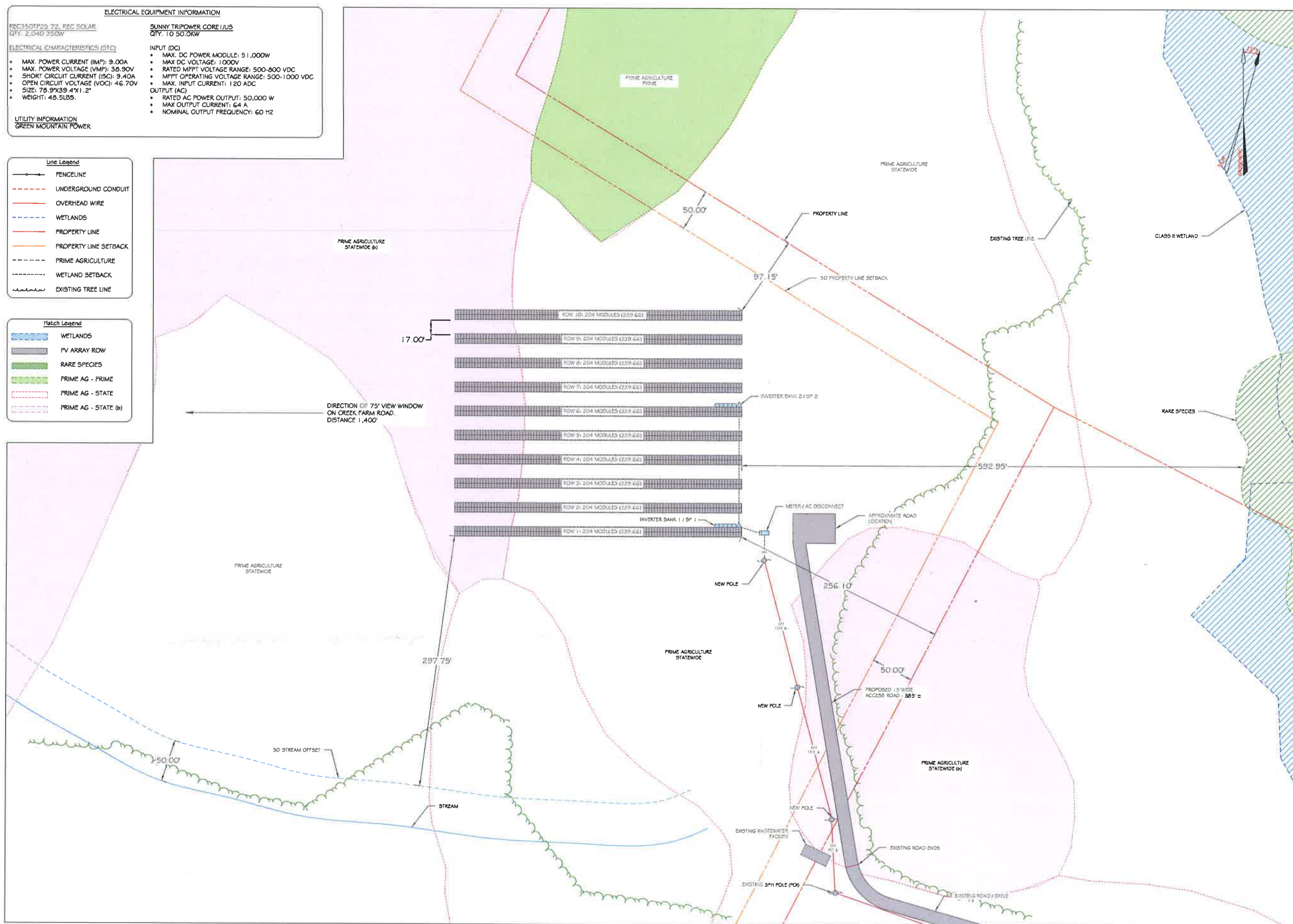
- RATED AC POWER OUTPUT: 50,000 W
- MAX OUTPUT CURRENT: 64 A
- NOMINAL OUTPUT FREQUENCY: 60 HZ

Line Legend

- FENCELINE
- UNDERGROUND CONDUIT
- OVERHEAD WIRE
- WETLANDS
- PROPERTY LINE
- PROPERTY LINE SETBACK
- PRIME AGRICULTURE
- WETLAND SETBACK
- EXISTING TREE LINE

Match Legend

- WETLANDS
- PV ARRAY ROW
- RARE SPECIES
- PRIME AG - PRIME
- PRIME AG - STATE
- PRIME AG - STATE (b)



SITE PLAN
1" = 50'

ATTN: TOM FLYNN - TFLYNN@AEGIS-RE.COM
340 MAD RIVER PARK, SUITE 6
WATSFIELD, VT 05673
802-560-0055
WWW.AEGIS-RE.COM

NO.	DESCRIPTION	DATE	BY
-----	-------------	------	----

- USE OF THESE DRAWINGS**
- UNLESS OTHERWISE NOTED, THESE DRAWINGS ARE INTENDED FOR PRELIMINARY PLANNING, COORDINATION WITH OTHER DISCIPLINES OR UTILITIES, AND/OR APPROVAL FROM REGULATORY AUTHORITIES. THEY ARE NOT INTENDED AS CONSTRUCTION DRAWINGS UNLESS NOTED AS SUCH OR MARKED APPROVED BY A REGULATORY AUTHORITY.
 - BY USE OF THESE DRAWINGS BY PARTIES OTHER THAN AEGIS RENEWABLE ENERGY FOR CONSTRUCTION OF THE PROJECT, THE USER REPRESENTS THAT THEY HAVE REVIEWED, APPROVED, AND ACCEPTED THE DRAWINGS, OBTAINED ALL NECESSARY PERMITS, AND HAVE MET WITH ALL APPLICABLE PARTISANSHIP, INCLUDING, BUT NOT LIMITED TO, CONTRACT DOCUMENTS, SPECIFICATIONS, OWNER/CONTRACTOR AGREEMENTS, BUILDING AND MECHANICAL PLANS, PRIVATE AND PUBLIC UTILITIES, AND OTHER PERTINENT PERMITS FOR CONSTRUCTION.
 - AEGIS AND THEIR ENGINEER, ARE RESPONSIBLE FOR FINAL DESIGN AND LOCATION OF BUILDINGS SHOWN, INCLUDING AN AREA MEASURED FIVE (5) FEET AROUND ANY BUILDING AND COORDINATING FINAL UTILITY CONNECTIONS SHOWN ON THESE PLANS.
 - PRIOR TO USING THESE PLANS FOR CONSTRUCTION LAYOUT, THE USER SHALL CONTRACT AEGIS RENEWABLE ENERGY TO ENSURE THE PLAN CONTAINS THE MOST CURRENT REVISIONS.
 - THESE DRAWINGS ARE SPECIFIC TO THE PROJECT AND ARE NOT TRANSFERABLE. AS INSTRUMENTS OF SERVICE, THESE DRAWINGS, AND COPIES THEREOF, FURNISHED BY AEGIS RENEWABLE ENERGY ARE ITS EXCLUSIVE PROPERTY. CHANGES TO THE DRAWINGS MAY ONLY BE MADE BY AEGIS RENEWABLE ENERGY. IF ERRORS OR OMISSIONS ARE DISCOVERED, THEY SHALL BE BROUGHT TO THE ATTENTION OF AEGIS RENEWABLE ENERGY IMMEDIATELY.
 - IT IS THE USER'S RESPONSIBILITY TO ENSURE THIS COPY CONTAINS THE MOST CURRENT REVISIONS. IF UNSURE, PLEASE CONTACT AEGIS RENEWABLE ENERGY.

PLAN TYPE - USE

CONCEPTUAL - FOR INITIAL
SIZING-LAYOUT PURPOSES
ONLY

PROJECT TITLE AND DETAILS

MUNSON PV ARRAY
3943 ROOSEVELT HWY
COLCHESTER, VT 05446
714 KW DC
500 KW AC

SHEET TITLE

SITE PLAN

DATE:	05/08/2018
SCALE:	1"=50'
PROJECT NUMBER:	18MUNPV01
DRAWN BY:	KB
PROJECT ENGINEER:	TAF
APPROVED BY:	TAF
FILE LOCATION:	SITE LAYOUT / CON

C2-01.1



LEGEND

- Parcels (Standardized)
- Roads**
 - Interstate
 - Principal Arterial
 - Minor Arterial
 - Major Collector
 - Minor Collector
 - Local
 - Not part of function Classification S
- Waterbody
- Stream
- Parcels (Non-Standardized)



1: 9,875

May 30, 2018



NOTES

Map created by CCRPC staff using ANR's Natural Resources Atlas for reference only.

502.0 0 251.00 502.0 Meters

WGS_1984_Web_Mercator_Auxiliary_Sphere

© Vermont Agency of Natural Resources

1" = 823 Ft.

1cm = 99 Meters

THIS MAP IS NOT TO BE USED FOR NAVIGATION

DISCLAIMER: This map is for general reference only. Data layers that appear on this map may or may not be accurate, current, or otherwise reliable. ANR and the State of Vermont make no representations of any kind, including but not limited to, the warranties of merchantability, or fitness for a particular use, nor are any such warranties to be implied with respect to the data on this map.

June 7, 2018

Phillip D. Foy
General Counsel
Encore Renewable Energy
110 Main Street, Suite 2E
Burlington, VT 05401

RE: Advance Notice of Petition for ER Jericho Landfill Solar, LLC's Proposed 500kW Solar Array off of Browns Trace Road in Jericho, VT (Case #18-1366-AN)

Dear Mr. Foy:

Chittenden County Regional Planning Commission has received the 45-day notice of a Section 248 Petition to be filed with the Vermont Public Utility Commission for a 500kW solar array off of Browns Trace Road in Jericho, VT. As you know, CCRPC is currently in the final stages of drafting a new regional plan (the *Draft 2018 Chittenden County ECOS Plan*), with an anticipated adoption date of June 20, 2018, and an effective date of July 25, 2018. We will be seeking a Determination of Energy Compliance from the Vermont Department of Public Service after the plan is adopted. Given the timing of this application, we have reviewed it based on the policies in the *Draft 2018 Chittenden County ECOS Plan*. We hope this letter serves to alert you to the policies that may be in place at the time of you filing your petition.

ECOS Energy Goal

CCRPC finds that this project meets the intent of the Energy Goal (Goal #17) of the *2018 ECOS Plan*: "Move Chittenden County's energy system toward a cleaner, more efficient and renewable system that benefits health, economic development, and the local/global climate by working towards the State's Comprehensive Energy Plan goals."

Strategy 2, Action 4b of the ECOS Plan states "CCRPC supports the generation of new renewable energy in the County to meet the Vermont Comprehensive Energy Plan's goals of using 90% renewable energy by 2050, in a manner that is cost effective and respects the natural environment". Development of this solar facility helps implement this action. The Plan's suitability policies help determine whether projects are cost effective, and the Plan's constraint policies help determine whether projects respect the natural environment.

Suitability Policies

The *2018 ECOS Plan* recommends the location of renewable energy generation facilities in appropriate locations, as defined by the policies in Strategy 2, Action 4b. The project as proposed meets the following suitability policies:

- The project is located on a previously impacted site and is located on a state-designated preferred site for net metering.
- The project is outside of any state designated centers or historic districts.

CCRPC finds that the general location of this project meets the suitability policies of the *2018 ECOS Plan*.

Constraints

The *2018 ECOS Plan* states that ground mounted renewable energy generation is constrained in certain areas due to state and local restrictions on development. Strategy 2, Action 4b states: "Site renewable

energy generation to avoid state and local known constraints and to minimize impacts to state and local possible constraints, as defined in Strategy 3, Action 1.f, and Strategy 4, Action 1.f, and Action 2.e. Renewable energy generation sited on existing structures or parking lots complies with this policy.”

CCRPC has reviewed the constraints that exist on the site of the proposed project. Based on our review of this project’s location using the ANR Natural Resources Atlas, it appears that there are Class II Wetlands and Primary Agricultural Soils on the parcel, but not impacted by this project. We mention the presence of these nearby constraints simply for your information, given that our review is based on data that have not been verified by on-the-ground studies. **CCRPC is not requesting further information or action related to these constraints at this time.**

This project located on the Mobbs Farm property, an area conserved by the Town of Jericho. Conserved lands in general are a possible constraint. However, the Jericho Selectboard has approved the use of town land for the solar project. **CCRPC is not requesting further information or action related to this constraint.**

The project narrative lists Ferry Road as the access point for the array. However, the site plan seems to show access from an unnamed road off of Brown’s Trace. Please clarify this project’s access point.

These comments are based on information currently available; we may have additional comments as the process continues. We understand that the project may change between the advance notice and the final application. CCRPC will review the project location again after the final application is submitted to confirm our initial findings above.

Please feel free to contact me with any questions.

Sincerely,

Charlie Baker
Executive Director

cc: CCRPC Board



A1
SCALE:
N/A

encore
RENEWABLE ENERGY
Leaders in Distributed Energy Generation.
110 Main Street, Suite 2E
Burlington, VT 05401
802-861-3023
www.encorerenewableenergy.com

PROFESSIONAL SEAL

ENGINEER'S SEAL APPLIES TO DESIGN OF STRUCTURAL COMPONENTS ONLY

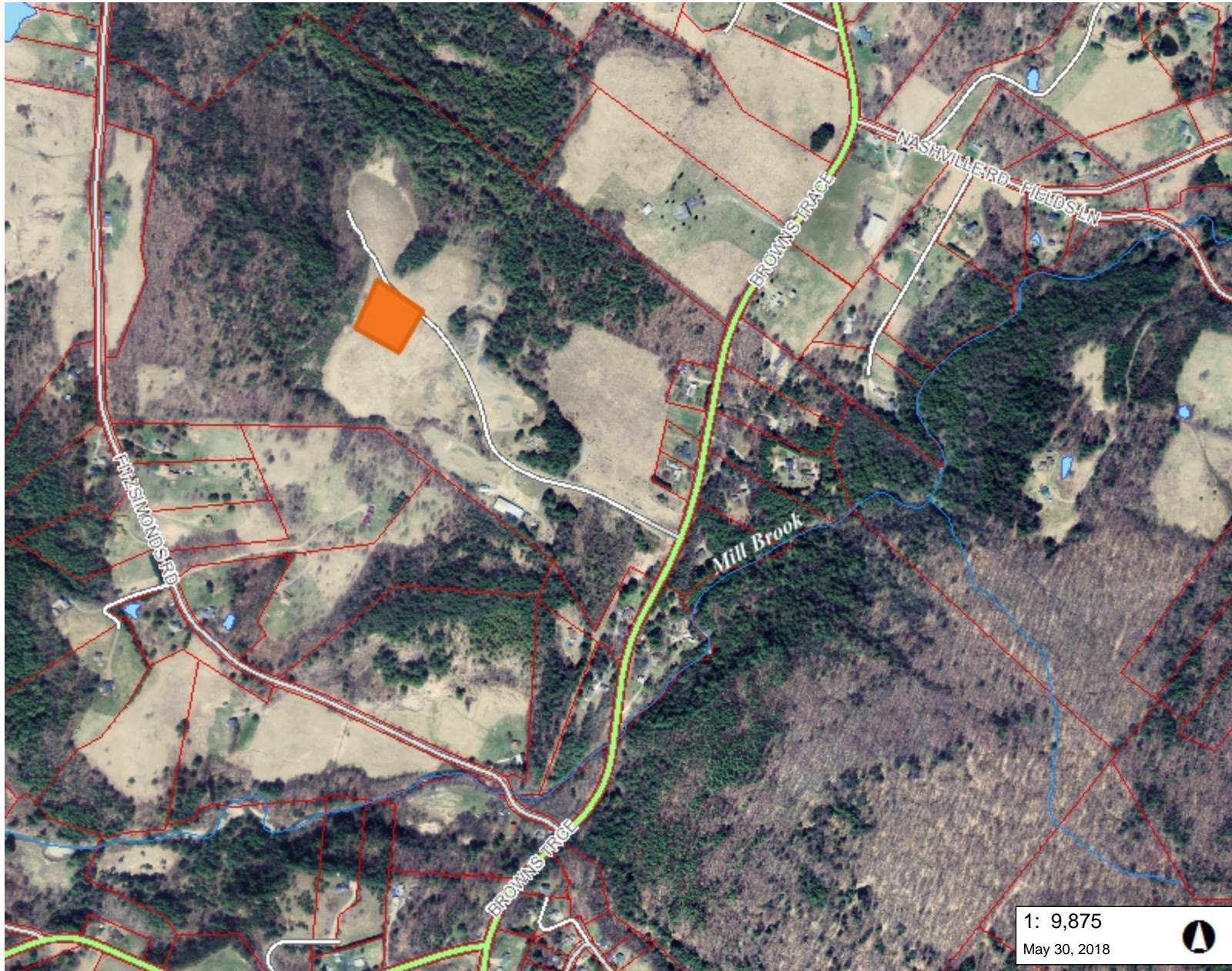
ER Jericho Landfill Solar, LLC Site Plan 726 kWDC / 500 kWAC

RELEASE RECORD

2	05/14/18	45-Day
1	04/04/18	Concept
MARK	DATE	DESCRIPTION

PROJECT INFORMATION

TITLE & ADDRESS: 508 Browns Trace, Jericho, VT (44.4544979, -72.9704848)	
ER PROJECT No.:	
DRAWN BY: PWM	REVIEWED BY:
SHEET TITLE: 45-Day Notice Layout	
SHEET No.: P-102	



LEGEND

- Parcels (Standardized)
- Roads**
 - Interstate
 - Principal Arterial
 - Minor Arterial
 - Major Collector
 - Minor Collector
 - Local
 - Not part of function Classification S
- Waterbody
- Stream
- Parcels (Non-Standardized)

1: 9,875

May 30, 2018



502.0 0 251.00 502.0 Meters

WGS_1984_Web_Mercator_Auxiliary_Sphere

© Vermont Agency of Natural Resources

1" = 823 Ft. 1cm = 99 Meters

THIS MAP IS NOT TO BE USED FOR NAVIGATION

DISCLAIMER: This map is for general reference only. Data layers that appear on this map may or may not be accurate, current, or otherwise reliable. ANR and the State of Vermont make no representations of any kind, including but not limited to, the warranties of merchantability, or fitness for a particular use, nor are any such warranties to be implied with respect to the data on this map.

NOTES

Map created by CCRPC staff using ANR's Natural Resources Atlas for reference only

June 7, 2018

Phillip D. Foy
General Counsel
Encore Renewable Energy
110 Main Street, Suite 2E
Burlington, VT 05401

RE: Advance Notice of Petition for ER Pond Brook Solar, LLC's Proposed 500kW Net Metered Solar Array at 4259 Roosevelt Highway, Colchester, VT (Case #18-1367-AN)

Dear Mr. Foy:

Chittenden County Regional Planning Commission has received the 45-day notice of a Section 248 Petition to be filed with the Vermont Public Utility Commission for a 500kW net metered solar array at 4259 Roosevelt Highway in Colchester, VT. As you know, CCRPC is currently in the final stages of drafting a new regional plan (the *Draft 2018 Chittenden County ECOS Plan*), with an anticipated adoption date of June 20, 2018, and an effective date of July 25, 2018. We will be seeking a Determination of Energy Compliance from the Vermont Department of Public Service after the plan is adopted. Given the timing of this application, we have reviewed it based on the policies in the *Draft 2018 Chittenden County ECOS Plan*. We hope this letter serves to alert you to the policies that may be in place at the time of you filing your petition.

ECOS Energy Goal

CCRPC finds that this project meets the intent of the Energy Goal (Goal #17) of the *2018 ECOS Plan*: "Move Chittenden County's energy system toward a cleaner, more efficient and renewable system that benefits health, economic development, and the local/global climate by working towards the State's Comprehensive Energy Plan goals."

Strategy 2, Action 4b of the ECOS Plan states "CCRPC supports the generation of new renewable energy in the County to meet the Vermont Comprehensive Energy Plan's goals of using 90% renewable energy by 2050, in a manner that is cost effective and respects the natural environment". Development of this solar facility helps implement this action. The Plan's suitability policies help determine whether projects are cost effective, and the Plan's constraint policies help determine whether projects respect the natural environment.

Suitability Policies

The *2018 ECOS Plan* recommends the location of renewable energy generation facilities in appropriate locations, as defined by the policies in Strategy 2, Action 4b. The project as proposed meets the following suitability policies:

- The project is located in an area with adequate grid capacity.
- The project is outside of any state designated centers or historic districts.

CCRPC finds that the general location of this project meets the suitability policies of the *2018 ECOS Plan*.

Constraints

The 2018 ECOS Plan states that ground mounted renewable energy generation is constrained in certain areas due to state and local restrictions on development. Strategy 2, Action 4b states: "Site renewable energy generation to avoid state and local known constraints and to minimize impacts to state and local possible constraints, as defined in Strategy 3, Action 1.f, and Strategy 4, Action 1.f, and Action 2.e. Renewable energy generation sited on existing structures or parking lots complies with this policy."

CCRPC has reviewed the constraints that exist on the site of the proposed project. Based on our review of this project's location using the ANR Natural Resources Atlas, it appears that there are DEC River Corridors, Rare, Threatened and Endangered Species, Class II Wetlands, FEMA Special Flood Hazard Areas, highest priority forest blocks, slopes over 20%, and wetland and surface water buffers on the parcel, but not impacted by the proposed array. We mention the presence of these nearby constraints for your information, given that our review is based on data that have not been verified by on-the-ground studies. **However, given the presence of constraints near the array, CCRPC requests more information on how the project will be accessed. The conceptual site plan does not show an access route. The project narrative describes the upgrade of an existing driveway off Mallets Bay Avenue, but the project is located on Colchester Avenue.**

These comments are based on information currently available; we may have additional comments as the process continues. We understand that the project may change between the advance notice and the final application. CCRPC will review the project location again after the final application is submitted to confirm our initial findings above.

Please feel free to contact me with any questions.

Sincerely,

Charlie Baker
Executive Director

cc: CCRPC Board





LEGEND

- Parcels (Standardized)
- Roads**
 - Interstate
 - Principal Arterial
 - Minor Arterial
 - Major Collector
 - Minor Collector
 - Local
 - Not part of function Classification S
- Waterbody
- Stream
- Parcels (Non-Standardized)

1: 9,875

May 30, 2018



NOTES

Map created by CCRPC staff using ANR's Natural Resources Atlas for reference only.

502.0 0 251.00 502.0 Meters

WGS_1984_Web_Mercator_Auxiliary_Sphere

© Vermont Agency of Natural Resources

1" = 823 Ft. 1cm = 99 Meters

THIS MAP IS NOT TO BE USED FOR NAVIGATION

DISCLAIMER: This map is for general reference only. Data layers that appear on this map may or may not be accurate, current, or otherwise reliable. ANR and the State of Vermont make no representations of any kind, including but not limited to, the warranties of merchantability, or fitness for a particular use, nor are any such warranties to be implied with respect to the data on this map.

June 7, 2018

Eric Phaneuf, Director of Business Development
Aegis Renewable Energy, Inc.
340 Mad River Park, Suite 6
Waitsfield, VT 05673
ephaneuf@aegis-re.com

RE: Advance Notice of Petition for Aegis Renewable Energy/Buttermilk LLC's Proposed 50kW Solar Carport Facility Project at 74 Jolina Court in Richmond, VT (Case #18-1391-AN)

Dear Mr. Phaneuf:

Chittenden County Regional Planning Commission has received the 45-day notice of a Section 248 Petition to be filed with the Vermont Public Utility Commission for a 150 kW solar project off of Mallets Bay Avenue in Colchester, VT. As you know, CCRPC is currently in the final stages of drafting a new regional plan (the *Draft 2018 Chittenden County ECOS Plan*), with an anticipated adoption date of June 20, 2018, and an effective date of July 25, 2018. We will be seeking a Determination of Energy Compliance from the Vermont Department of Public Service after the plan is adopted. Given the timing of this application, we have reviewed it based on the policies in the *Draft 2018 Chittenden County ECOS Plan*. We hope this letter serves to alert you to the policies that may be in place at the time of you filing your petition.

ECOS Energy Goal

CCRPC finds that this project meets the intent of the Energy Goal (Goal #17) of the *2018 ECOS Plan*: "Move Chittenden County's energy system toward a cleaner, more efficient and renewable system that benefits health, economic development, and the local/global climate by working towards the State's Comprehensive Energy Plan goals."

Strategy 2, Action 4b of the ECOS Plan states "CCRPC supports the generation of new renewable energy in the County to meet the Vermont Comprehensive Energy Plan's goals of using 90% renewable energy by 2050, in a manner that is cost effective and respects the natural environment". Development of this solar facility helps implement this action. The Plan's suitability policies help determine whether projects are cost effective, and the Plan's constraint policies help determine whether projects respect the natural environment.

Suitability Policies

The *2018 ECOS Plan* recommends the location of renewable energy generation facilities in appropriate locations, as defined by the policies in Strategy 2, Action 4b. The project as proposed meets the following suitability policies:

- The project is located proximate to 3-phase power in an area with adequate grid capacity.
- The project is located on a previously impacted area.
- The project is located in an area planned for growth.

The 2018 ECOS Plan strongly supports the building of renewable energy facilities on areas that are already impacted, including parking lots. Therefore, the general location of this project meets the suitability policies of the *2018 ECOS Plan*.

Constraints

The 2018 ECOS Plan states that ground mounted renewable energy generation is constrained in certain areas due to state and local restrictions on development. Strategy 2, Action 4b states: "Site renewable energy generation to avoid state and local known constraints and to minimize impacts to state and local possible constraints, as defined in Strategy 3, Action 1.f, and Strategy 4, Action 1.f, and Action 2.e. Renewable energy generation sited on existing structures or parking lots complies with this policy."

This project will be located on a parking lot that will be built as part of a project approved by the Town of Richmond Development Review Board on April 11, 2018. **Therefore, CCRPC finds that this project complies with the siting constraint policies in the ECOS Plan.**

These comments are based on information currently available; we may have additional comments as the process continues. We understand that the project may change between the advance notice and the final application. CCRPC will review the project location again after the final application is submitted to confirm our initial findings above.

Please feel free to contact me with any questions.

Sincerely,

Charlie Baker
Executive Director

cc: CCRPC Board

ELECTRICAL EQUIPMENT INFORMATION

REC350TP25 72, REC SOLAR
QTY. 210 350W

ELECTRICAL CHARACTERISTICS (STC)

- MAX. POWER CURRENT (IMP): 9.00A
- MAX. POWER VOLTAGE (VMP): 38.90V
- SHORT CIRCUIT CURRENT (ISC): 9.40A
- OPEN CIRCUIT VOLTAGE (VOC): 46.70V
- SIZE: 78.9"x39.4"x1.2"
- WEIGHT: 48.5LBS.

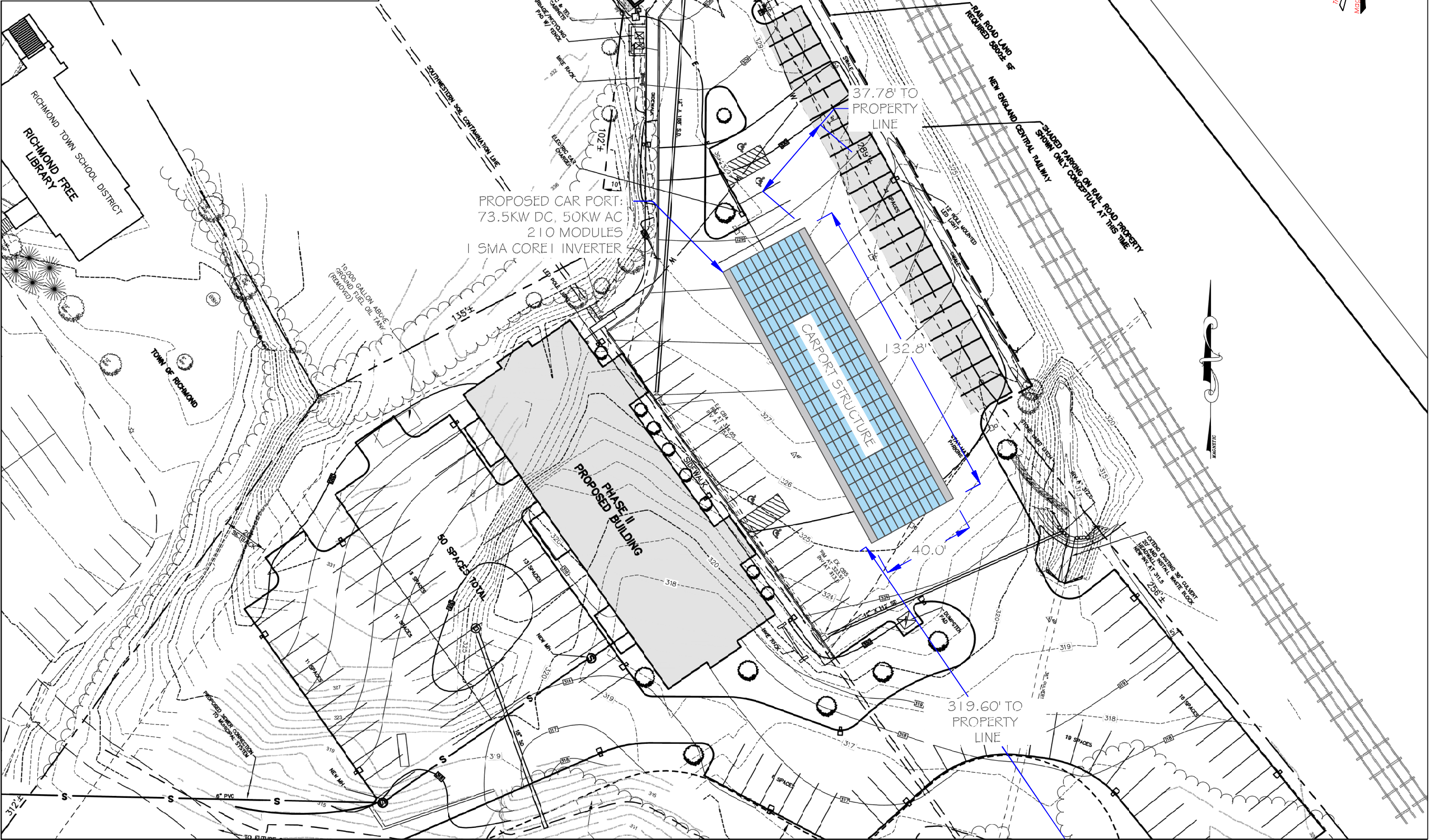
SUNNY TRIPOWER CORE I/U5
QTY. 1 50.0KW

INPUT (DC)

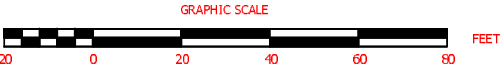
- MAX. DC POWER MODULE: 51,000W
- MAX DC VOLTAGE: 1000V
- RATED MPPT VOLTAGE RANGE: 500-800 VDC
- MPPT OPERATING VOLTAGE RANGE: 500-1000 VDC
- MAX. INPUT CURRENT: 120 ADC

OUTPUT (AC)

- RATED AC POWER OUTPUT: 50,000 W
- MAX OUTPUT CURRENT: 64 A
- NOMINAL OUTPUT FREQUENCY: 60 HZ



SITE PLAN
1" = 20'



ATTN: TOM FLYNN - TFLYNN@AEGIS-RE.COM
340 MAD RIVER PARK, SUITE 6
WAITSFIELD, VT 05673
802-560-0055
WWW.AEGIS-RE.COM

REVISIONS	NO.	DESCRIPTION	DATE	BY
-----------	-----	-------------	------	----

Attachment A - Site Plan

USE OF THESE DRAWINGS
1. UNLESS OTHERWISE NOTED, THESE DRAWINGS ARE INTENDED FOR PRELIMINARY PLANNING, COORDINATION WITH OTHER DISCIPLINES OR UTILITIES, AND/OR APPROVAL FROM REGULATORY AUTHORITIES. THEY ARE NOT INTENDED AS CONSTRUCTION DRAWINGS UNLESS NOTED AS SUCH OR MARKED APPROVED BY A REGULATORY AUTHORITY.

2. BY USE OF THESE DRAWINGS BY PARTIES OTHER THAN AEGIS RENEWABLE ENERGY FOR CONSTRUCTION OF THE PROJECT, THE ENTITY REPRESENTS THAT THEY HAVE REVIEWED, APPROVED, AND ACCEPTED THE DRAWINGS, OBTAINED ALL NECESSARY PERMITS, AND HAVE MET WITH ALL APPLICABLE PARTIES/DISCIPLINES, INCLUDING, BUT NOT LIMITED TO, CONTRACT DOCUMENTS, SPECIFICATIONS, OWNER/CONTRACTOR AGREEMENTS, BUILDING AND MECHANICAL PLANS, PRIVATE AND PUBLIC UTILITIES, AND OTHER PERTINENT PERMITS FOR CONSTRUCTION.

3. AEGIS AND THEIR ENGINEER, ARE RESPONSIBLE FOR FINAL DESIGN AND LOCATION OF BUILDINGS SHOWN, INCLUDING AN AREA MEASURED FIVE (5) FEET AROUND ANY BUILDING AND COORDINATING FINAL UTILITY CONNECTIONS SHOWN ON THESE PLANS.

4. PRIOR TO USING THESE PLANS FOR CONSTRUCTION LAYOUT, THE USER SHALL CONTRACT AEGIS RENEWABLE ENERGY TO ENSURE THE PLAN CONTAINS THE MOST CURRENT REVISIONS.

5. THESE DRAWINGS ARE SPECIFIC TO THE PROJECT AND ARE NOT TRANSFERABLE. AS INSTRUMENTS OF SERVICE, THESE DRAWINGS, AND COPIES THEREOF, FURNISHED BY AEGIS RENEWABLE ENERGY ARE ITS EXCLUSIVE PROPERTY. CHANGES TO THE DRAWINGS MAY ONLY BE MADE BY AEGIS RENEWABLE ENERGY. IF ERRORS OR OMISSIONS ARE DISCOVERED, THEY SHALL BE BROUGHT TO THE ATTENTION OF AEGIS RENEWABLE ENERGY IMMEDIATELY.

6. IT IS THE USER'S RESPONSIBILITY TO ENSURE THIS COPY CONTAINS THE MOST CURRENT REVISIONS. IF UNSURE, PLEASE CONTACT AEGIS RENEWABLE ENERGY.

PLAN TYPE - USE

CONCEPTUAL - FOR CARPORT
PERMITTING PURPOSES ONLY

PROJECT TITLE AND DETAILS

RICHMOND CARPORT
PV ARRAY
74 JOLINA COURT
RICHMOND, VT 05477
73.5KW DC
50.0KW AC

SHEET TITLE

SITE PLAN

DATE:	05/14/2018
SCALE:	1"=20'
PROJECT NUMBER:	18RCPV01
DRAWN BY:	KB
PROJECT ENGINEER:	TAF
APPROVED BY:	TAF
FILE LOCATION:	SITE LAYOUT / CON

C2-01.1



LEGEND

- Parcels (Standardized)
- Roads**
 - Interstate
 - Principal Arterial
 - Minor Arterial
 - Major Collector
 - Minor Collector
 - Local
 - Not part of function Classification S
- Waterbody
- Stream
- Parcels (Non-Standardized)

1: 4,938

May 30, 2018



NOTES

Map created by CCRPC staff using ANR's Natural Resources Atlas for reference only.

251.0 0 126.00 251.0 Meters

WGS_1984_Web_Mercator_Auxiliary_Sphere

© Vermont Agency of Natural Resources

1" = 412 Ft. 1cm = 49 Meters

THIS MAP IS NOT TO BE USED FOR NAVIGATION

DISCLAIMER: This map is for general reference only. Data layers that appear on this map may or may not be accurate, current, or otherwise reliable. ANR and the State of Vermont make no representations of any kind, including but not limited to, the warranties of merchantability, or fitness for a particular use, nor are any such warranties to be implied with respect to the data on this map.

June 7, 2018

Timothy Upton, Manager of Environmental Services
Green Mountain Power
163 Acorn Lane
Colchester, VT 05446

RE: Advance Notice of Petition for Green Mountain Power's Relocation and Rebuild of the Airport Substation at 5 and 7 Shamrock Road in South Burlington, VT (Case #18-1423-AN)

Dear Mr. Upton:

Chittenden County Regional Planning Commission has received the 45-day notice of a Section 248 Petition to be filed with the Vermont Public Utility Commission for the relocation and rebuilding of Green Mountain Power's Airport Substation to 5 and 7 Shamrock Road in South Burlington, VT. As you may know, CCRPC is currently in the final stages of drafting a new regional plan (the *Draft 2018 Chittenden County ECOS Plan*), with an anticipated adoption date of June 20, 2018, and an effective date of July 25, 2018. We will be seeking a Determination of Energy Compliance from the Vermont Department of Public Service after the plan is adopted. Given the timing of this application, we have reviewed it based on the policies in the *Draft 2018 Chittenden County ECOS Plan*. We hope this letter serves to alert you to the policies that may be in place at the time of you filing your petition.

ECOS Energy Goal

CCRPC finds that this project meets the intent of the Energy Goal (Goal #17) of the *2018 ECOS Plan*: "Move Chittenden County's energy system toward a cleaner, more efficient and renewable system that benefits health, economic development, and the local/global climate by working towards the State's Comprehensive Energy Plan goals."

Strategy 2, Action 4b of the ECOS Plan states "CCRPC supports the generation of new renewable energy in the County to meet the Vermont Comprehensive Energy Plan's goals of using 90% renewable energy by 2050, in a manner that is cost effective and respects the natural environment." Development of this substation will increase efficiency and allow for future installations of distributed renewable energy generation.

Constraints

The 2018 ECOS Plan states that development should be located to avoid state and local known constraints that have been field verified, and to minimize impacts to state and local possible constraints that have been field verified (Strategy 3, Action 1.f and Strategy 4, Action 1.f and Action 2.e).

Based on the site plan included in the advance notice, CCRPC has reviewed the constraints that exist on the site of the proposed project. This location avoids most constraints.

However, it appears that some constraints may be impacted by this project.

- Agricultural Soils: Based on the agricultural soils layer shown on the ANR Natural Resources Atlas, it appears that this project may impact primary agricultural soils. CCRPC will defer to the Vermont Agency of Agriculture, Food and Markets in determining the impact of development

on agricultural soils. **CCRPC is not requesting further information or action related to this constraint at this time.**

- Highest Priority Forest Blocks and Highest Priority Wildlife Crossings: Based on the information shown for these constraints on the ANR Biofinder Map, it appears that this project may impact highest priority forest blocks and highest priority wildlife crossings. CCRPC will defer to the Vermont Fish and Wildlife Department in determining the impact of this development on highest priority forest blocks and highest priority wildlife crossings. **CCRPC is not requesting further information or action related to this constraint at this time.**

These comments are based on information currently available; we may have additional comments as the process continues. We understand that the project may change between the advance notice and the final application. CCRPC will review the project location again after the final application is submitted to confirm our initial findings above.

Please feel free to contact me with any questions.

Sincerely,

Charlie Baker
Executive Director

cc: CCRPC Board

Planting Schedule							
Qty.	Code	Scientific Name	Common Name	Size	Spec	Remarks	Notes
28	CR	CORNUS racemosa	Gray Dogwood	3' Ht.	B&B		
8	MS	MALUS sargentii	Sargent Crabapple	1 1/2" cal.	B&B		
5	PG	PICEA glauca	White Spruce	8' Ht.	B&B		

Exhibit 4





1: 9,875

May 30, 2018



LEGEND

- Parcels (Standardized)
- Parcels (Non-Standardized)
- Roads**
 - Interstate
 - Principal Arterial
 - Minor Arterial
 - Major Collector
 - Minor Collector
 - Local
 - Not part of function Classification S
- Waterbody
- Stream

NOTES

Map created by CCRPC staff using ANR's Natural Resources Atlas for reference only

502.0 0 251.00 502.0 Meters

WGS_1984_Web_Mercator_Auxiliary_Sphere

© Vermont Agency of Natural Resources

1" = 823 Ft. 1cm = 99 Meters

THIS MAP IS NOT TO BE USED FOR NAVIGATION

DISCLAIMER: This map is for general reference only. Data layers that appear on this map may or may not be accurate, current, or otherwise reliable. ANR and the State of Vermont make no representations of any kind, including but not limited to, the warranties of merchantability, or fitness for a particular use, nor are any such warranties to be implied with respect to the data on this map.

ANNUAL MEETING AGENDA
Wednesday, June 20, 2018, 6:00 pm
ECHO, Leahy Center for Lake Champlain,
1 College Street, Burlington, VT



DRAFT AGENDA

5:00 p.m.- Social Hour, hors d'oeuvres, cash bar

6:00 pm - Joint Meeting with GBIC, CCRPC Business Meeting

GBIC Awards

CCRPC Recognition

1. Call to Order
2. ECOS Regional Plan (including MTP and CEDS) Adoption * (Action; 1 min.)
3. Changes to the Agenda (Action; 1 min.)
4. Public Comment Period on Items NOT on the Agenda
5. Approve Minutes of May 16, 2018 Meeting * (Action; 1 min.)
6. Warn Public Hearing for FY19-22 Transportation Improvement Program (TIP) * (Action: 1 min.)
7. Election of Officers and Executive Committee for FY19 * (Action: 2 min.)
8. Chair/Executive Director's Updates (Information; 1 min.)
 - a. Executive Director's Report
9. Committee/Liaison Activities & Reports * (Information; 1 min.)
 - a. Planning Advisory Committee (draft minutes May 9, 2018)*
 - b. Transportation Advisory Committee (draft minutes June 5, 2018)*
 - c. Clean Water Advisory Committee (draft minutes June 5, 2018)*
 - d. MS4 Subcommittee (draft minutes June 5, 2018)*
 - e. Executive Committee (draft minutes June 6, 2018)*
10. Adjournment

**Attachment*

*In accordance with provisions of the Americans with Disabilities Act (ADA) of 1990, the CCRPC will ensure public meeting sites are accessible to all people. Requests for free interpretive or translation services, assistive devices, or other requested accommodations, should be made to Emily Nosse-Leirer, CCRPC Title VI Coordinator, at 802-846-4490 ext. *15 or enosse-leirer@ccrpcvt.org, no later than 3 business days prior to the meeting for which services are requested.*

Upcoming Meetings - Unless otherwise noted, all meetings are held at our offices:

- Transportation Advisory Committee - Tuesday, July 3, 2018; 9:00 a.m.
- Clean Water Advisory Committee -Tuesday, July 3, 2018; 11:00 a.m.
- Executive Committee – **Wednesday, July 18, 2018; 5:00 p.m.**
- Planning Advisory Committee - Wednesday, July 11, 2018 2:30 p.m.
- CCRPC Board Meeting & TIP Public Hearing- Wednesday, July 18, 2018; 6:00 p.m.

Tentative future Board agenda items:

July 18, 2018	FY19-22 TIP Public Hearing and Adoption National Highway System Update – Action Vermont Climate Pledge - Action Guidelines and Standards for Reviewing Act 250 and Section 248 Applications Review - Action Guidelines and Standards for Confirmation of Municipal Planning Processes and Approval of Municipal Plans - Discussion
NO AUGUST MEETING	
September 19, 2018	greenride bikeshare Update Guidelines and Standards for Confirmation of Municipal Planning Processes and Approval of Municipal Plans Review – Action Transportation Survey Results – Discussion Transportation Performance Measures - Discussion

*In accordance with provisions of the Americans with Disabilities Act (ADA) of 1990, the CCRPC will ensure public meeting sites are accessible to all people. Requests for free interpretive or translation services, assistive devices, or other requested accommodations, should be made to Emily Nosse-Leirer, CCRPC Title VI Coordinator, at 802-846-4490 ext. *15 or enosse-leirer@ccrpcvt.org, no later than 3 business days prior to the meeting for which services are requested.*