



## **Agenda**

### **Executive Committee**

**Wednesday, July 18, 2018 – 5:15 p.m.**

**Small Conference Room, CCRPC Offices**

**110 West Canal Street, Suite 202, Winooski, VT**

1. Changes to the Agenda, Members' Items
2. Approval of June 6, 2018 Executive Committee Meeting Minutes\* (Action)
3. Act 250 & Sec 248 Applications
  - a. 2800 Roosevelt Highway Town Solar, Colchester, #18-2364-NMP (Action)
  - b. Mallets Bay Town Solar, Colchester, Case #18-2408-NMP (Action)
  - c. Union Bank/Snyder Market Street, Williston, Case #4C0887-1R-M (Action)
4. Recommend FY19 Meeting Schedule to Board\* (Action)
5. Review Commission Committees/Members\* (Action)
6. Bank signatures/resolutions for FY19 (Action)
7. Guidelines & Standards for reviewing Act 250 & Section 248\* (Action)
8. Chair/Executive Director Report (Discussion)
9. Other Business – August or September Executive Committee meeting date? (Discussion)
10. Executive Session – none anticipated (Action)
11. Adjournment (Action)

\*Attachments

**NEXT MEETING – Joint Executive and Finance Committee – Wed. September 5, 2018; 5:45 p.m.**

In accordance with provisions of the Americans with Disabilities Act (ADA) of 1990, the CCRPC will ensure public meeting sites are accessible to all people. Requests for free interpretive or translation services, assistive devices, or other requested accommodations, should be made to Emma Vaughn, CCRPC Title VI Coordinator, at 802-846-4490 x \*21 or [evaughn@ccrpcvt.org](mailto:evaughn@ccrpcvt.org), no later than 3 business days prior to the meeting for which services are requested.

CHITTENDEN COUNTY REGIONAL PLANNING COMMISSION  
EXECUTIVE COMMITTEE  
MEETING MINUTES  
DRAFT

DATE: Wednesday, June 6, 2018  
TIME: 5:45 p.m.  
PLACE: CCRPC offices, 110 West Canal Street, Suite 202; Winooski, VT 05404  
PRESENT: Chris Roy, Chair Mike O'Brien, Vice-Chair  
Brian Bigelow, Secretary-Treasurer John Zicconi, At-Large  
Barbara Elliott, At-Large Andy Montroll, Immediate Past Chair  
Staff: Charlie Baker, Executive Director Regina Mahony, Planning Program Manager  
Bernadette Ferenc, Trans. Business Mgr.

The meeting was called to order at 5:45 p.m. by the Chair, Chris Roy.

1. Changes to the Agenda/Members' Items: There were no changes to the agenda.

2. Approval of May 2, 2018 Executive Committee Meeting Minutes. BARBARA ELLIOTT MADE A MOTION, SECONDED BY ANDY MONTROLL, TO APPROVE THE MINUTES OF MAY 2, 2018 WITH CORRECTIONS. Barbara noted a change on page 3, line 23 – to remove “be amended” as it is redundant. MOTION CARRIED UNANIMOUSLY TO APPROVE THE MINUTES AS CORRECTED.

3. Act 250/Section 248 Applications. Regina noted that there are 6 letters today. However, the order in the packet does not agree with the numbering on the agenda, so we will follow the packet. Apparently there are financing structure changes coming on July 1<sup>st</sup> which prompted a flurry of applications. Since three of these applications are on Roosevelt Highway in Colchester, Regina brought up an aerial map on the screen to show where each was located.

e. 2800 Roosevelt Highway – Aegis Renewable Energy/Town of Colchester – Case #18-1329-AN. This application is for a 150kW solar project at 2800 Roosevelt Highway. In this case we note potential constraints and are asking for additional information. She noted a minor correction on page 2 to change “requested” to “requesting”. BARBARA ELLIOTT MADE A MOTION, SECONDED BY MIKE O'BRIEN, TO APPROVE THE LETTER WITH THAT CHANGE. MOTION CARRIED UNANIMOUSLY.

f. 3943 Roosevelt Highway Solar, Colchester, Case #18-1329-AN. This application is for a 500 kW solar array in Colchester. We noted several possible constraints that state agencies may address. ANDY MONTROLL MADE A MOTION, SECONDED BY JOHN ZICCONI, TO APPROVE THE LETTER. MOTION CARRIED UNANIMOUSLY.

b. ER Jericho Landfill Solar, Jericho – Case #18-1366-AN. This project is for a 500kW solar array off of Browns Trace Road in Jericho. We did not find any constraints. It was noted that the reference to “Ferry Road” in the application should be corrected to say “Browns Trace Road.” MIKE O'BRIEN MADE A MOTION TO APPROVE THE LETTER WITH THAT CORRECTION. BARBARA ELLIOTT SECONDED AND THE MOTION CARRIED UNANIMOUSLY.

c. ER Pond Brook Solar, Colchester, Case #18-1367-AN. This application is for a 500kW solar array at 4259 Roosevelt Highway in Colchester. There is no information provided on how this site will be accessed. Since there are some constraints near the array, we are asking for more information on how this site will be accessed. The project narrative describes the upgrade of an existing driveway off Malletts Bay Avenue, but the project is located on Roosevelt Highway. We will correct page two of the letter to say “Roosevelt Highway” instead of “Colchester Avenue”. JOHN ZICCONI MADE A MOTION,

1 SECONDED BY BRIAN BIGELOW, TO APPROVE THE LETTER WITH THAT CHANGE. MOTION CARRIED  
2 UNANIMOUSLY.

3 d. Jolina Court Solar Carport, Richmond, Case #18-1391-AN. This is an application from Aegis  
4 Renewable Energy/Buttermilk LLC for a 50kW solar project off Jolina Court in Richmond. This is the site  
5 we've talked about before related to brownfields and the proposed Richmond Senior Center. They  
6 intend to put a roof over the parking area with the solar array on top. Members made suggestions to  
7 change some language in the Suitability Policies to change "meets" the suitability policies, to  
8 "advances". Also expand "...parking lots" to read "rooftops and parking lots." We will bold the last  
9 paragraph on page 1 for emphasis to highlight that this is the type of place we want to see solar  
10 projects. We will also correct location in the first paragraph from Malletts Bay Avenue in Colchester to  
11 Jolina Court in Richmond. BARBARA ELLIOTT MADE A MOTION, SECONDED BY ANDY MONTROLL, TO  
12 APPROVE THE LETTER WITH THOSE CHANGES. MOTION CARRIED UNANIMOUSLY.

13 a. Green Mountain Power Airport Substation, South Burlington, Case #18-1423-AN. This project is for  
14 relocation and rebuilding of GMP's Airport substation to 5 & 7 Shamrock Road in South Burlington. The  
15 location avoids most constraints, but we did note a couple of constraints that may be impacted – ag soils  
16 and high priority forest blocks. Mike O'Brien voiced his frustration about having to mention ag soils in  
17 areas that have existing development. Discussion ensued about including the planning area language  
18 that we include in Act 250 letters to indicate first and foremost this is a good and logical location for this  
19 type of development. BRIAN BIGELOW MADE A MOTION, SECONDED BY MIKE O'BRIEN, TO APPROVE  
20 THE LETTER WITH ADDITION OF PLANNING AREA LANGUAGE. MOTION CARRIED UNANIMOUSLY.

21  
22 4. CCRPC Organizational Development. Charlie asked the members for some input as a follow-up to  
23 other conversations he's had. We may have a little staff time available because there were not as many  
24 requests from communities. Staff discussed whether we should have a retreat and do some more  
25 strategic planning. He noted when Challenges for Change happened we did a survey of board members  
26 and partners to see how CCRPC was working. There were some minor concerns that we addressed. Is  
27 this a good year to do some organizational feedback? There are some tools from NADO (National  
28 Association of Development Officials) which we belong to that may help with staffing, board, etc. We're  
29 involved in much more than we were in 2011, which is when we last discussed this. Transportation staff  
30 will be able to focus on working with VTrans on the transportation project prioritization process.  
31 Discussion ensued. Andy Montroll noted we had a check-in after the merger to see if we wanted a  
32 retreat and it was decided we were doing okay. John Zicconi said it's good for staff to have flexibility of  
33 where to put their time. Barbara Elliott suggested that it would be nice if staff could spend more time on  
34 professional development – conferences, reading, etc. Discussion continued. Chris Roy noted that  
35 soliciting input is different than having a formal retreat. We should solicit input from municipalities and  
36 our partners. Barbara feels communities and agencies have a duty to come to us if they have a problem.  
37 Andy noted that one thing that came out of the Board Development Committee this year was that we  
38 need to focus on transportation training for board members this fall. Mike O'Brien suggested that  
39 perhaps we invite our partners to come to the board meetings periodically to let members know what  
40 they're doing. It was agreed that we don't need a retreat, but can use board meetings to get to know  
41 our partners (e.g. UVM). Mike O'Brien noted that when we invite a partner to come to the board  
42 meetings to provide information, we should be respectful of the fact that they are our invited guests  
43 and limit questions and/or comments to items that help clarify the information being presented. It was  
44 agreed to have transportation training this fall prior to board meetings and then bring in other partners.  
45 Chris Roy suggested hearing from the Lake Champlain Basin Program to see how our water quality  
46 efforts fit together.

5. Chair/Executive Director's Report.

a. Legislative update. Charlie noted if the state budget does not get approved by July 1<sup>st</sup> it could affect our contracts with state agencies.

b. VTrans fire. There was a brief discussion about the fire in VTrans offices in National Life building over the weekend. Apparently the worst damage was on the 4<sup>th</sup> floor in the highway division where most computers will have to be replaced because of water damage. Luckily the data is backed up on the state system. They are temporarily relocating staff to other VTrans offices. Planning and the finance departments are on the 5<sup>th</sup> floor and were not affected.

c. VELCO Long-Range Transmission Plan. Regina noted that this is a 20-year outlook plan but it's updated every three years. At this point VELCO doesn't envision any infrastructure changes, but with all the wind and solar projects they may have to address that in the next update in three years.

d. Burlington Projects. Charlie noted that we are having some difficulties with the Burlington Amtrak Train Storage and Servicing study, as well as the Railyard Enterprise Project. Most waterfront property owners (Main St. Landing and Vermont Rail) are concerned about where the train will stay at night. Vermont Rail System is not interesting in storing the train on their property. Eleni Churchill is at a public meeting tonight on this issue.

6. Agenda Review – June 20, 2018 Annual Board Meeting. Members discussed the proposed agenda for the annual meeting and made suggestions. Charlie noted that the Governor has been invited, but has not confirmed.

7. Other Business. It was decided that since the 1<sup>st</sup> Wednesday in July is the 4<sup>th</sup>, that we will hold the Executive Committee meeting at 5:30 p.m. right before the July 18<sup>th</sup> board meeting.

8. Executive Session – for the purpose of discussing personnel matters. BARBARA ELLIOTT MADE A MOTION, SECONDED BY MIKE O'BRIEN, TO GO INTO EXECUTIVE SESSION AT 6:45 P.M. WITH CHARLIE BAKER PRESENT. MOTION CARRIED UNANIMOUSLY.

BARBARA ELLIOTT MADE A MOTION, SECONDED BY BRIAN BIGELOW, TO COME OUT OF EXECUTIVE SESSION AT 7:12 P.M. MOTION CARRIED UNANIMOUSLY.

BARBARA ELLIOTT MADE A MOTION, SECONDED BY MIKE O'BRIEN, THAT THE EXECUTIVE COMMITTEE RECOGNIZE EMPLOYEE ACHIEVEMENT AND AUTHORIZES THE EXECUTIVE DIRECTOR TO SPEND UP TO 100% OF THE FY19 SALARY BUDGET AS DETERMINED BY THE EXECUTIVE DIRECTOR FOR STAFF AND AS DETERMINED BY THE EXECUTIVE COMMITTEE FOR THE EXECUTIVE DIRECTOR. MOTION CARRIED UNANIMOUSLY.

BRIAN BIGELOW MADE A MOTION, SECONDED BY ANDY MONTROLL, TO ADJOURN THE MEETING AT 7:13 P.M. MOTION CARRIED UNANIMOUSLY.

Respectfully submitted.

Bernadette Ferenc



July 20, 2018

Eric Phaneuf, Director of Business Development  
Aegis Renewable Energy, Inc.  
340 Mad River Park, Suite 6  
Waitsfield, VT 05673  
[ephaneuf@aegis-re.com](mailto:ephaneuf@aegis-re.com)

RE: Petition for CPG for Aegis Renewable Energy/Town of Colchester's Proposed 150 kW Project in Colchester, Vermont – 2800 Roosevelt Highway (Case #18-2364-NMP – formerly #18-1329-AN)

Dear Mr. Phaneuf:

Chittenden County Regional Planning Commission has received the Petition for a Certificate of Public Good a filed with the Vermont Public Utility Commission for a 150kW solar project at 2800 Roosevelt Highway in Colchester, VT (Case #18-2364-NMP). CCRPC reviewed this project during the advance notice stage and submitted comments at that time (Case #18-1329-AN). Please note that CCRPC recently adopted the 2018 Chittenden County ECOS Plan, which has an effective date of July 25, 2018.

#### ECOS Energy Goal

CCRPC finds that this project meets the intent of the Energy Goal (Goal #17) of the *2018 ECOS Plan*: “Move Chittenden County’s energy system toward a cleaner, more efficient and renewable system that benefits health, economic development, and the local/global climate by working towards the State’s Comprehensive Energy Plan goals.”

Strategy 2, Action 4b of the ECOS Plan states “CCRPC supports the generation of new renewable energy in the County to meet the Vermont Comprehensive Energy Plan’s goals of using 90% renewable energy by 2050, in a manner that is cost effective and respects the natural environment”. Development of this solar facility helps implement this action. The Plan’s suitability policies help determine whether projects are cost effective, and the Plan’s constraint policies help determine whether projects respect the natural environment.

#### Suitability Policies

The *2018 ECOS Plan* recommends the location of renewable energy generation facilities in appropriate locations, as defined by the policies in Strategy 2, Action 4b. The project as proposed meets the following suitability policies:

- The project is located proximate to existing 3-phase power and is in an area with adequate grid capacity.
- The project location has been endorsed by the Colchester Select Board in a letter to the Public Utilities Commission dated August 23, 2017.
- The project is located outside of Colchester’s Designated Growth Center and Designated New Town Center.

CCRPC finds that the location of this project meets the suitability policies of the *2018 ECOS Plan*. As demonstrated by CCRPC’s letter of support for the project to be considered a preferred site location, CCRPC strongly supports this project’s location.

## Constraints

The 2018 ECOS Plan states that ground mounted renewable energy generation is constrained in certain areas due to state and local restrictions on development. Strategy 2, Action 4b states: "Site renewable energy generation to avoid state and local known constraints and to minimize impacts to state and local possible constraints, as defined in Strategy 3, Action 1.f, and Strategy 4, Action 1.f, and Action 2.e. Renewable energy generation sited on existing structures or parking lots complies with this policy."

CCRPC has reviewed the constraints that exist near the proposed project. In our comments on the advance notice application, we noted the presence of several constraints possibly impacted by the approximate location of the project. The CPG Petition includes materials showing the exact location of the project, the delineation of known and possible constraints nearby, and testimony describing the location of the project in relation to these constraints. Our conclusions on these constraints are below:

- Agricultural Soils: During the review of this project's advance notice, CCRPC noted that it appeared that statewide agricultural soils would be impacted by this project. **The information submitted with this petition show that the proposed array will directly impact 0.86 acres of primary agricultural soils, which are a possible constraint in the 2018 ECOS Plan. CCRPC defers to the expertise of the Vermont Agency of Agricultural, Farms and Markets in determining whether impacts to this constraint are minimized. We have no further comments on this constraint at this time.**
- Highest Priority Forest Blocks and Highest Priority Wildlife Crossings: During the review of this project's advance notice, CCRPC noted that it appeared that highest priority forest blocks and highest priority wildlife crossings might be impacted by this project. Following review of this petition, **the Vermont Agency of Natural Resources (ANR) has determined that no changes to this project are necessary to avoid an undue adverse impact to these constraints. CCRPC defers to the expertise of ANR in determining impacts to these constraints. We have no further comments on these constraints at this time.**

These comments are based on information currently available; we may have additional comments as the process continues. We understand that the project may change between the advance notice and the final application. CCRPC will review the project location again after the final application is submitted to confirm our initial findings above.

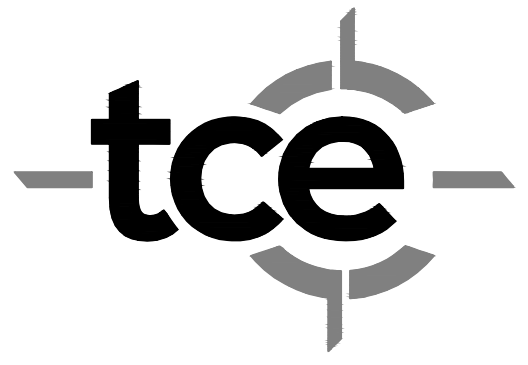
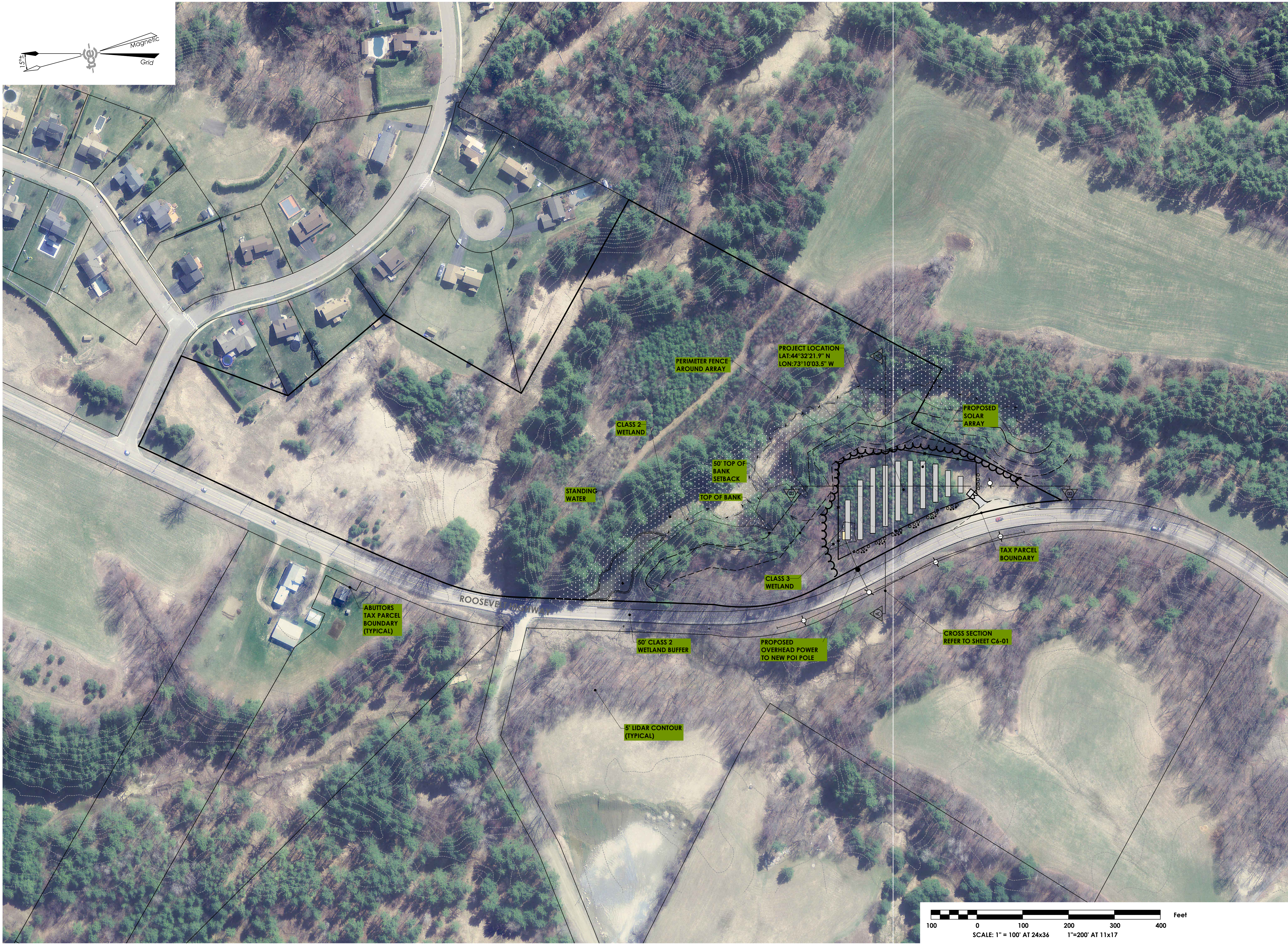
Please feel free to contact me with any questions.

Sincerely,

Charlie Baker  
Executive Director

cc: CCRPC Board  
Sarah Hadd, Director of Planning and Zoning, Colchester





TRUDELL CONSULTING ENGINEERS  
478 BLAIR PARK ROAD | WILLISTON, VERMONT 05495  
802 879 6331 | WWW.TCEVT.COM

Revisions	No.	Description	Date	By

TAX ID:

Use of These Drawings  
1. Unless otherwise noted, these Drawings are intended for preliminary planning, coordination with other disciplines or utilities, and/or approval from the regulatory authorities. They are not intended as construction drawings unless noted as such or marked approved by a regulatory authority.

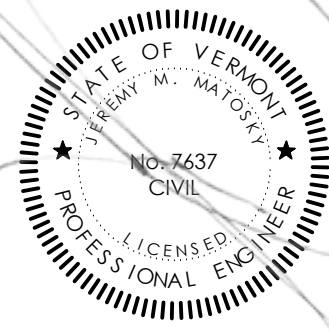
2. By use of these drawings for construction of the Project, the Owner represents that they have reviewed, approved, and accepted the drawings, obtained all necessary permits, and have met with all applicable parties/discipline including but not limited to, the Engineer and the Architect, to insure these plans are properly coordinated including, but not limited to, contract documents, specifications, owner/contractor agreements, building and mechanical plans, private and public utilities, and other pertinent permits for construction.

3. Owner and Architect, are responsible for final design and location of buildings shown, including an area measured a minimum five (5) feet around any building and coordinating final utility connections shown on these plans.

4. Prior to using these plans for construction layout, the user shall contact TCE to ensure the plan contains the most current revisions.

5. These Drawings are specific to the Project and are not transferable. As instruments of service, these drawings, and copies thereof, furnished by TCE are its exclusive property. Changes to the drawings may only be made by TCE. If errors or omissions are discovered, they shall be brought to the attention of TCE immediately.

6. It is the User's responsibility to ensure this copy contains the most current revisions. If unsure, please contact TCE.



Project Title

**Aegis Solar**  
2800 Roosevelt Highway  
Colchester, Vermont

Sheet Title

**Ortho Site Plan**

Date:	6/15/2018
Scale:	1" = 100'
Project Number:	17-116
Drawn By:	RMP
Project Engineer:	AAD
Approved By:	
Field Book:	

**C2-01**



July 20, 2018

Nils Behn, CEO  
Aegis Renewable Energy, Inc.  
340 Mad River Park, Suite 6  
Waitsfield, VT 05673

RE: Petition for CPG for Aegis Renewable Energy/Town of Colchester's Proposed 150 kW Project in Colchester, Vermont (Case #18-2408-NMP – formerly #18-0952-AN)

Dear Mr. Behn:

Chittenden County Regional Planning Commission (CCRPC) has received the petition for a Certificate of Public Good as filed with the Vermont Public Utility Commission for a 150kW solar project off of Mallets Bay Avenue in Colchester, VT (Case #18-2408-NMP). CCRPC reviewed this project during the advance notice stage and submitted comments at that time (Case #18-0952-AN). Please note that CCRPC recently adopted the 2018 Chittenden County ECOS Plan, which has an effective date of July 25, 2018.

#### ECOS Energy Goal

CCRPC finds that this project meets the intent of the Energy Goal (Goal #17) of the *2018 ECOS Plan*: "Move Chittenden County's energy system toward a cleaner, more efficient and renewable system that benefits health, economic development, and the local/global climate by working towards the State's Comprehensive Energy Plan goals."

Strategy 2, Action 4b of the ECOS Plan states "CCRPC supports the generation of new renewable energy in the County to meet the Vermont Comprehensive Energy Plan's goals of using 90% renewable energy by 2050, in a manner that is cost effective and respects the natural environment". Development of this solar facility helps implement this action. The Plan's suitability policies help determine whether projects are cost effective, and the Plan's constraint policies help determine whether projects respect the natural environment.

#### Suitability Policies

The *2018 ECOS Plan* recommends the location of renewable energy generation facilities in appropriate locations, as defined by the policies in Strategy 2, Action 4b. The project as proposed meets the following suitability policies:

- The project is located in an area with adequate grid capacity.
- The project is outside of any state designated centers or historic districts.

CCRPC finds that the location of this project meets the suitability policies of the *2018 ECOS Plan*. As demonstrated by CCRPC's letter of support for the project to be considered a preferred site location, CCRPC strongly supports this project's location.

#### Constraints

The 2018 ECOS Plan states that ground mounted renewable energy generation is constrained in certain areas due to state and local restrictions on development. Strategy 2, Action 4b states: "Site renewable energy generation to avoid state and local known constraints and to minimize impacts to state and local

possible constraints, as defined in Strategy 3, Action 1.f, and Strategy 4, Action 1.f, and Action 2.e. Renewable energy generation sited on existing structures or parking lots complies with this policy.”

CCRPC has reviewed the constraints that exist near the proposed project. In our comments on the advance notice application, we noted that the following constraints appeared near the parcel, but did not appear to be impacted: primary agricultural soils, hydric soils, highest priority forest blocks and slopes over 20% appeared the parcel. The CPG Petition included materials showing the exact location of the project, the delineation of known and possible constraints nearby, and testimony describing the location of the project in relation to these constraints. **Based on this information, it appears that this project avoids known constraints and minimizes impacts to possible constraints. CCRPC has no further comments on constraints at this time.**

These comments are based on information currently available; we may have additional comments as the process continues.

Please feel free to contact me with any questions.

Sincerely,

Charlie Baker  
Executive Director

cc: CCRPC Board



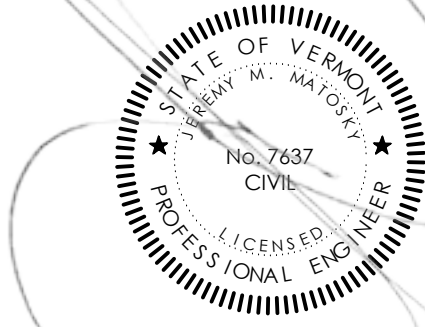


TRUDELL CONSULTING ENGINEERS  
478 BLAIR PARK ROAD | WILLISTON, VERMONT 05495  
802 879 6331 | WWW.TCEVT.COM

Revisions	No.	Description	Date	By

TAX ID:

- Use of These Drawings
1. Unless otherwise noted, these Drawings are intended for preliminary planning, coordination with other disciplines or utilities, and/or approval from the regulatory authorities. They are not intended as construction drawings unless note as such or marked approved by a regulatory authority.
2. By use of these drawings for construction of the Project, the Owner represents that they have reviewed, approved, and accepted the drawings, obtained all necessary permits, and have met with all applicable parties/discipline including but not limited to, the Engineer and the Architect, to insure these plans are properly coordinated including, but not limited to, contract documents, specifications, owner/contractor agreements, building and mechanical plans, private and public utilities, and other pertinent permit for construction.
3. Owner and Architect, are responsible for final design and location of buildings shown, including an area measured a minimum five (5) feet around any building and coordinating final utility connections shown on these plans.
4. Prior to using these plans for construction layout, the user shall contact TCE to ensure the plan contains the most current revisions.
5. These Drawings are specific to the Project and are not transferable. As instruments of service, these drawings, and copies thereof, furnished by TCE are its exclusive property. Changes to the drawings may only be made by TCE. If errors or omissions are discovered, they shall be brought to the attention of TCE immediately.
6. It is the User's responsibility to ensure this copy contains the most current revisions. If unsure, please contact TCE.



Project Title

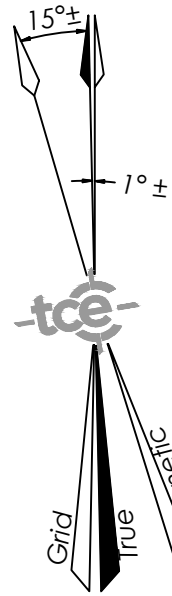
**Aegis Solar**  
Malletts Bay Ave  
Colchester, Vermont

Sheet Title

**Ortho Site Plan**

Date:	06/13/2018
Scale:	1" = 100'
Project Number:	18-065
Drawn By:	RMP/BAM
Project Engineer:	JMM
Approved By:	JMM
Field Book:	

**C2-01**





July 19, 2018

Rachel Lomonaco  
Act 250 Coordinator  
111 West Street  
Essex Junction, VT 05452

RE: Union Bank and Market Street; Williston; Application #4C0887-1R-M

Dear Ms. Lomonaco:

The Chittenden County Regional Planning Commission's Staff and Executive Committee have reviewed this Act 250 application for a project described as the construction of Market Street from Zephyr Road to Holland Lane, and construction of a new commercial building near the intersection of Zephyr Road and Williston Road for use as a bank and office space. The project is located on Zephyr Road in Williston, Vermont. The commercial building and street construction received a discretionary permit from the Town of Williston's Development Review Board on May 22, 2018. We offer the following comments:

The project is located within the Center Planning Area as defined in the Chittenden County Regional Plan, entitled the *2013 Chittenden County ECOS Plan*. We find this project to be consistent with the Planning Areas for the following reasons:

1. The Metro Planning Area is identified in the Plan as an area planned for growth, and therefore this project helps implement Strategy #2 of the Plan which calls for 80% of new development in the areas planned for growth.
2. The project is located in a state-designated Growth Center, will be served by municipal water and sewer service, and is accessible via GMT transit routes.
3. The density and uses are consistent with the local regulations, as demonstrated by the local permit.

Therefore, we find this project to be in conformance with the Planning Areas of the *2013 Chittenden County Regional Plan*.

We also find that this project meets the requirements of Criterion 9(L) as it is located within a state designated Growth Center.

The Technical Memorandum dated 6/26/2018 written by Lamoureux & Dickinson Consulting Engineers, Inc. indicates a decrease in the previously estimated pm peak hour trip generation of 331 vehicle trip ends per hour (vte/hr) to 329 vte/hr. We concur with these findings and therefore have no concerns regarding transportation.

Due to the detailed level of development review in most Chittenden County municipalities and the environmental permit reviews at the Department of Environmental Conservation, CCRPC will give specific attention in its Act 250 reviews to the type of use and the Planning Areas section of the 2013 Chittenden County ECOS Plan. While there are many other topics covered in the 2013 Chittenden

County ECOS Plan, there has been significant analysis at the Regional level regarding transportation impacts. The CCRPC will also focus its attention on transportation, where appropriate, in accordance with the Metropolitan Transportation Plan, which is within the 2013 Chittenden County ECOS Plan.

These comments are based on information currently available; we may have additional comments as the process continues. Please feel free to contact me should you have any questions.

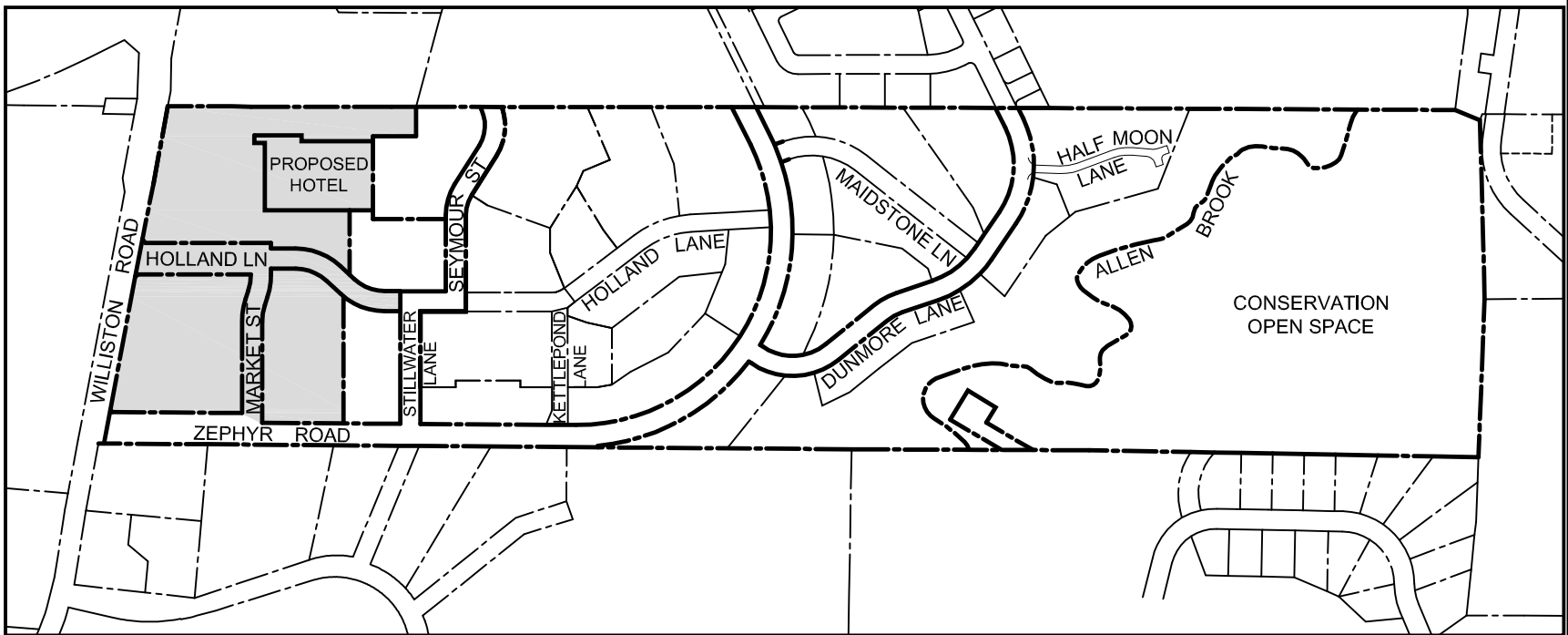
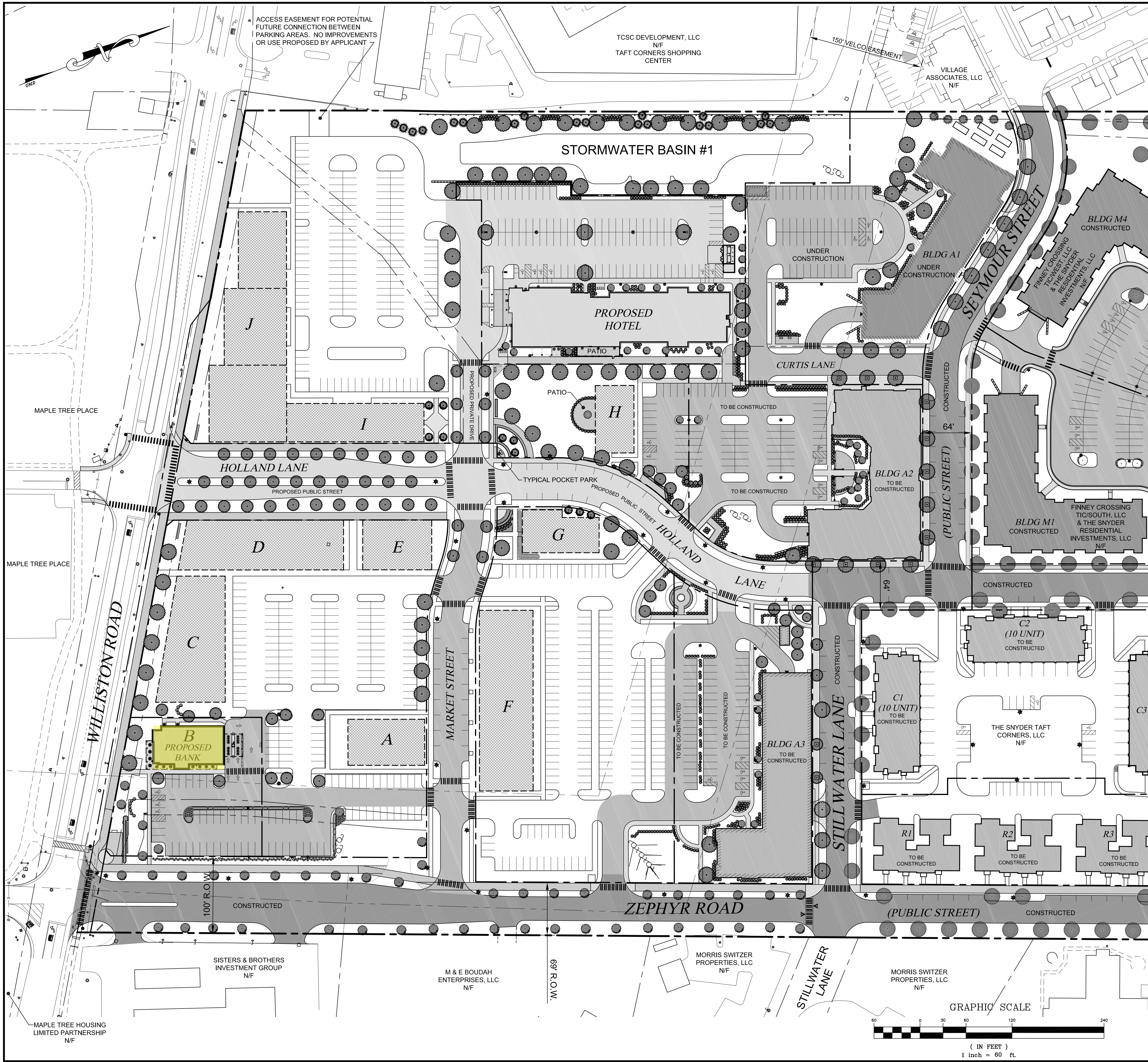
Sincerely,

Charlie Baker  
Executive Director

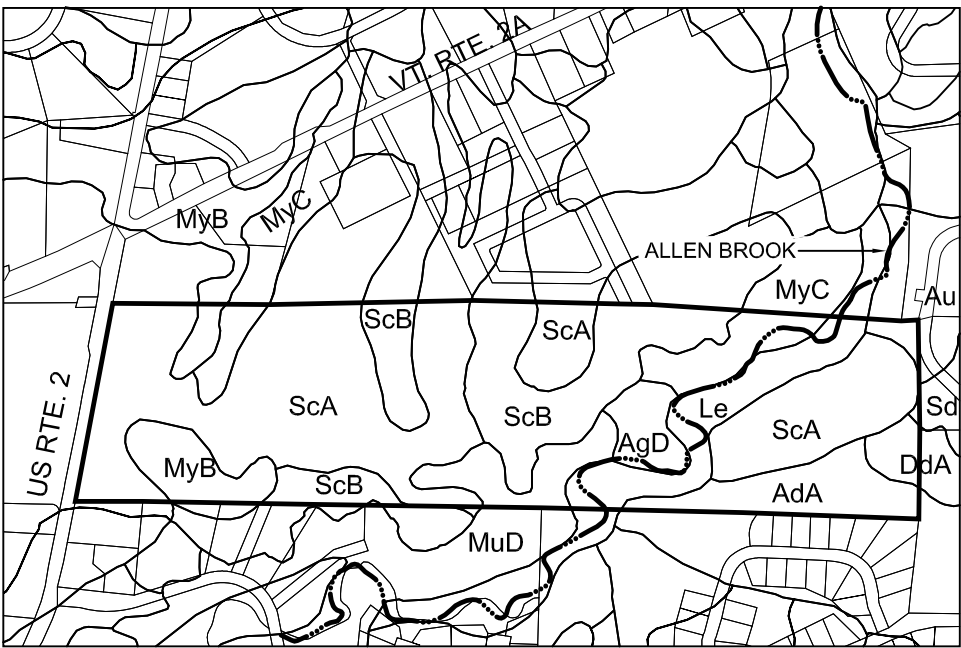
Cc: CCRPC Board  
Certificate of Service

DRAFT





- FINNEY CROSSING LOCATION MAP**  
N.T.S.
- PUBLIC STREET**  
ZEPHYR ROAD (CONSTRUCTED)  
DUNMORE LANE (CONSTRUCTED)  
STILLWATER LANE (CONSTRUCTED)  
SEYMOUR STREET (CONSTRUCTED)  
MARKET STREET (TO BE CONSTRUCTED)  
HOLLAND LANE, SOUTH OF SEYMOUR ST (PARTIALLY CONSTRUCTED)
- PRIVATE STREETS**  
HALF MOON LANE (CONSTRUCTED)  
MAIDSTONE LANE (CONSTRUCTED)  
KETTLEPOND LANE (CONSTRUCTED)  
HOLLAND LANE, NORTH OF SEYMOUR ST (CONSTRUCTED)



**SOILS MAP**  
SCALE: 1" = 1000'

SCS MAPING UNIT	DESCRIPTION	ERODABILITY COEFFICIENT
AgD	AGAWAM FINE SANDY LOAM	0.28
MuD	MUNSON & BELGRADE SILT LOAM	0.49
MyB	MUNSON & RAYNHAM SILT LOAM	0.49
MyC	MUNSON & RAYNHAM SILT LOAM	0.49
ScA	SCANTIC SILT LOAM	0.32
ScB	SCANTIC SILT LOAM	0.32

- NOTES:**
1. THE PURPOSE OF THIS PLAN IS TO PRESENT THE OVERALL LAYOUT OF THE SOUTHERLY PORTION OF THE FINNEY CROSSING PROJECT PARCEL.
  2. SEE ADDITIONAL SHEETS FOR DESIGN INFORMATION RELATED TO THE PROPOSED HOTEL, RELATED SITE IMPROVEMENTS, AND THE EXTENSION OF HOLLAND LANE TO WILLISTON ROAD.
  3. SEE ALSO DESIGN PLANS FOR BUILDINGS A1, A2, & A3 AND RELATED SITE IMPROVEMENTS.

**VERMONT**  
ACT 250 District Commission #4  
Application #: 4C0887-1R-M  
Exhibit #: 018  
Date Received: 6/28/18

REVISIONS		# OF SHEETS
THESE PLANS WITH LATEST REVISIONS SHOULD ONLY BE USED FOR THE PURPOSE SHOWN BELOW:		
<input type="checkbox"/> SKETCH/CONCEPT		
<input type="checkbox"/> PRELIMINARY		
<input checked="" type="checkbox"/> FINAL		
<input type="checkbox"/> RECORD DRAWING		
<b>FINNEY CROSSING</b> A PLANNED UNIT DEVELOPMENT WILLISTON, VERMONT		proj. no. 01-087
<b>COMMERCIAL AREA</b> <b>SITE PLAN</b>		survey L&D
		design DJG/ABR
		drawn L&D
		checked DJG/ABR
		date 04-06-18
		scale 1" = 100'
		sht. no. <b>B1</b>

**LD** **LAMOUREUX & DICKINSON**  
Consulting Engineers, Inc.  
14 Morse Drive  
Essex Junction, VT 05452  
(802) 878-4450





## **Chittenden County Regional Planning Commission**

**July 18, 2017**

**Agenda Item 6: Action Item**

### **FY2019 Schedule of Meetings**

**Issues:**

Vermont's Open Meeting Law requires that public bodies clearly designate the time and place of all regular meetings. Below is the proposed meeting schedule for both the Executive Committee and the CCRPC Commission for the 2019 fiscal year beginning July 2018. Please mark your calendars.

**EXECUTIVE COMMITTEE**

First Wednesday of the Month  
5:45 p.m. – 7:00 p.m.

July 18, 2018 (Prior to board meeting)  
NO AUGUST MEETING  
September 5, 2018 (Joint w/ Finance. Comm.)  
October 3, 2018  
November 7, 2018 (Joint w/ Finance Comm.)

December 5, 2018  
January 2, 2019  
February 6, 2019  
March 6, 2019  
April 3, 2019  
May 1, 2019  
June 5, 2019

**COMMISSION MEETINGS**

Third Wednesday of the Month  
6:00 p.m. – 8:00 p.m.

July 18, 2018  
NO AUGUST MEETING  
September 19, 2018  
October 17, 2018  
November 28, 2018 (Nov. 21 is day before Thanksgiving)

Legislative breakfast date TBD  
January 16, 2019  
February 20, 2019  
March 20, 2019  
April 17, 2019  
May 15, 2019  
June 19, 2019 (ANNUAL MEETING)

The Transportation Advisory Committee (TAC) meets the first Tuesday of each month at 9:00 a.m. (except on Town Meeting Day, when they meet on the 1<sup>st</sup> Wednesday.)

The Clean Water Advisory Committee (CWAC) meets the first Tuesday of each month at 11:00 a.m. (except on Town Meeting Day, when they meet on the 1<sup>st</sup> Wednesday.)

The Finance Committee meets the 4<sup>th</sup> Wednesday of each month at 5:45 p.m. as needed.

The Planning Advisory Committee (PAC) generally meets bi-monthly on the 2nd Wednesday of the month from 2:30-4:30 p.m.

**Staff Recommendation:** That the Executive Committee recommend approval of the FY2019 Meeting Schedule to the Commission.

**Exec. Comm. Recommendation:** That the Commission approve the FY2019 Meeting Schedule.

**For more information contact:** Bernie Ferenc  
846-4490 ext. \*10 or [bferenc@ccrpcvt.org](mailto:bferenc@ccrpcvt.org)



## **Chittenden County Regional Planning Commission**

**July 18, 2018**

### **Agenda Item 7: Chair Action Item**

#### **FY2019 Committee Appointments**

*From the Bylaws: Article VII.B. "The Chair shall ... with concurrence of the Chittenden County Regional Planning Commission, establish and appoint committees and their members." Article XI: "All Chittenden County Regional Planning Commission Board members are encouraged to participate in a minimum of at least one standing committee. The Chair may appoint ad hoc committees for a specific purpose with the approval of the Chittenden County Regional Planning Commission. Committees should include subject matter experts as needed to provide advice to the Chittenden County Regional Planning Commission Board."*

**Finance Committee** (Secretary/Treasurer, Vice Chair and 1 other board member): John Zicconi, Shelburne (Chair); Mike O'Brien, Winooski, Jeff Carr, Essex

**Board Development Committee** (past Chair and up to 4 other board members): Andy Montroll, Burlington (Chair); Dan Kerin, Essex Junction; Catherine McMains, Jericho; Jeff Carr, Essex;

---

**Unified Planning Work Program Committee** (3-5 board members): Michael O'Brien, Winooski (Chair); John Zicconi, Shelburne; Michael Bissonette, Hinesburg; Jeff Bartley, Colchester; and Sharon Murray, Bolton.

**Transportation Advisory Committee** (1 board member): Barbara Elliott, Huntington

**Planning Advisory Committee** (1 board member): Joss Besse, Bolton

**Long Range Planning Committee** (3-6 board members, one of them to be Chair of the LRPC): Justin Dextrateur, Socio-Econ (Chair); Andrea Morgante, Hinesburg; Jim Donovan, Charlotte; Bard Hill, Richmond; \_\_\_\_\_

**Clean Water Advisory Committee:** (1 board member) Don Meals, Conservation/Environment

**ad hoc Brownfields Advisory Committee:** Curt Carter, GBIC (Chair); Jacquba Boure, AALV; Eric Howe, LCBP; Marcel Beaudin; Dr. Pablo Bose, UVM; Justin Dextrateur, Socio/Econ/Housing

**ad hoc All Hazards Mitigation Plan Update Committee:** Chris Shaw, So. Burlington.

**VAPDA representative:** Andy Montroll, Burlington; \_\_\_\_\_ (Alt.)

For questions, contact Charlie Baker, 846-4490 ext. \*23 or [cbaker@ccrpcvt.org](mailto:cbaker@ccrpcvt.org)