

Intervale Road Pedestrian and Bicycle Access Feasibility Study

Project Overview

Project Goal

Enhance community access to a dynamic Intervale District through implementation of bicycle and pedestrian improvements along Intervale Road.

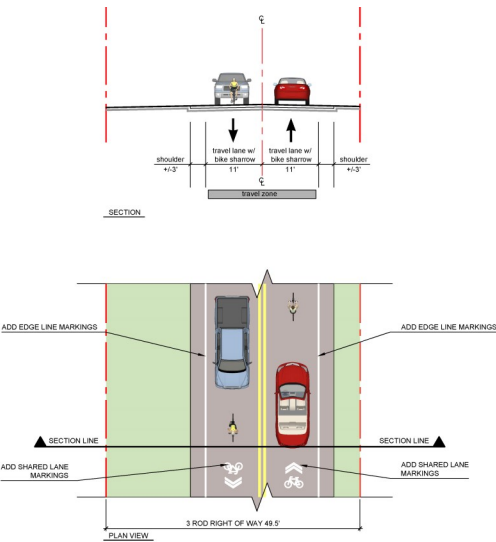
Current Feasibility Study

Scoping Study to identify existing conditions, evaluate alternatives, engage stakeholders, and select a preferred alternative.

Paved Section of Intervale Road (Riverside Avenue to McNeil Driveway)

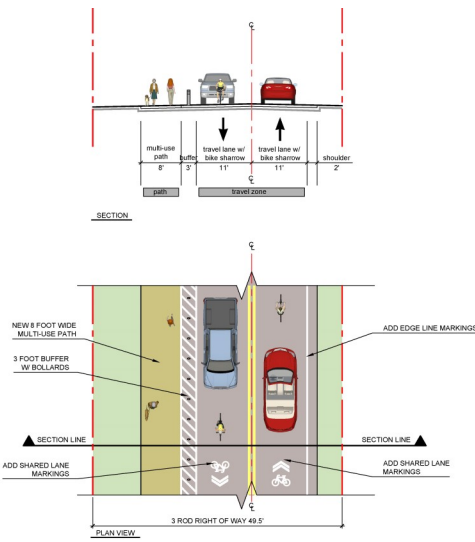
Alternative 1: Shared Lanes

Pedestrian Facilities: No change
Bicycle Facilities: Shared lanes
Other: None
Estimated Cost: \$10,000



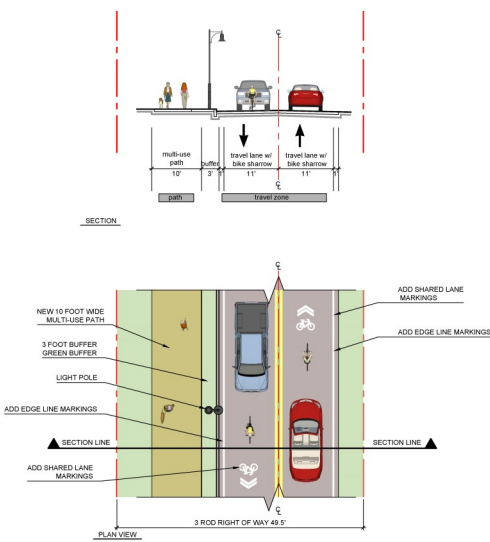
Alternative 2: Shared Lanes + 8' Path

Pedestrian Facilities: 8' multi-use path
Bicycle Facilities: Shared lanes
Other: Bollards
Estimated Cost: \$800,000



Alternative 3: Shared Lanes + 10' Path + Amenities

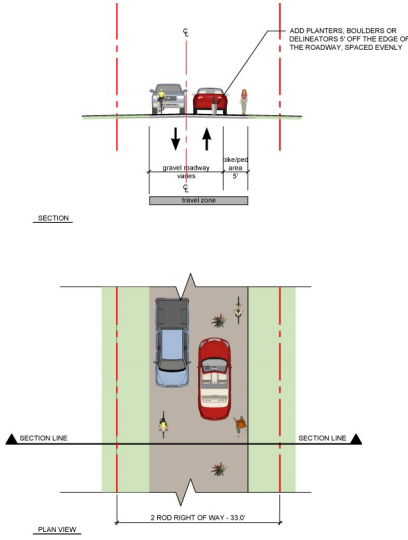
Pedestrian Facilities: 10' multi-use path
Bicycle Facilities: Shared lanes
Other: Curbs, street lights
Estimated Cost: \$1,510,000



Gravel Section of Intervale Road (McNeil Driveway to Pent Gate)

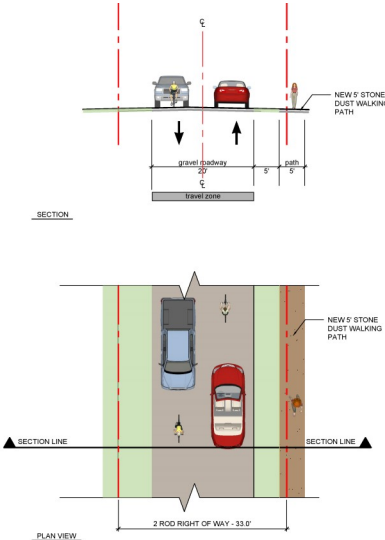
Alternative 1: Shared Road + Dividers

Pedestrian Facilities: Divided walkway
Bicycle Facilities: Divided space
Estimated Cost: \$9,000



Alternative 2: 5' Aggregate Path

Pedestrian Facilities: Separated walkway
Bicycle Facilities: None
Estimated Cost: \$230,000



Don't forget to pick your preferred alternatives!



Intervale Road Pedestrian and Bicycle Access Feasibility Study

Comments

Visit <https://www.ccrpcvt.org/intervale-road-pedestrian-bicycle-access-feasibility-study> for regular updates on the Intervale Road Bike and Pedestrian Feasibility Study!

For questions regarding the Intervale Road Feasibility Study, contact Peter Keating, CCRPC Senior Transportation Planner, at (802) 846-4490 x *14 or pkeating@ccrpcvt.org.