



Agenda
Executive Committee
Wednesday, June 5, 2019 – 5:45 p.m.
Small Conference Room, CCRPC Offices
110 West Canal Street, Suite 202, Winooski, VT

1. Changes to the Agenda, Members' Items
2. Approval of May 1, 2019 Joint Executive & Finance Committee Minutes* (Action)
3. Act 250 & Section 248 Applications (Action)
 - a. SunCommon 150kW Solar Canopy; Colchester; #19-1324-NMP*
 - b. Aegis 3943 Roosevelt Hwy 500kW Solar; Colchester; #19-1448-AN*
 - c. Encore Shelburne Museum 150kW Solar; Shelburne; #19-1493-AN*
 - d. Encore Shelburne Museum 500kW Solar; Shelburne; #19-1494-AN*
 - e. Encore Jericho Gravel Pit 1.5MW Solar; Jericho; #19-1527-AN*
 - f. Aegis Sunny Hollow 150kW Solar; Colchester; #19-1449-AN
4. FY20 Calendar of Meeting Dates* (Action)
5. Review the FY20-23 TIP (Discussion)
6. Chair/Executive Director Report (Discussion)
 - a. Legislative Update
7. CCRPC June 19, 2019 Annual Meeting Agenda review* (Discussion)
8. Other Business (Discussion)
9. Executive Session – Personnel Issues (Action)
10. Adjournment (Action)

*Attachments

NEXT MEETING – Executive Committee – Wed. July __, 2019; 5:45 p.m.

(July 3rd is first Wednesday in July – last year you met prior to July board meeting)

CHITTENDEN COUNTY REGIONAL PLANNING COMMISSION
JOINT EXECUTIVE AND FINANCE COMMITTEE MEETING MINUTES
DRAFT

DATE: Wednesday, May 1, 2019
TIME: 5:45 p.m.
PLACE: CCRPC Offices, 110 W. Canal Street, Suite 202; Winooski, VT 05404
PRESENT: Chris Roy, Chair Mike O'Brien, Vice- Chair
John Zicconi, Secretary-Treasurer Barbara Elliott, At-Large (via phone)
Catherine McMains, At-Large Andy Montroll, Immediate Past-Chair
Jeff Carr (via phone)
Staff: Charlie Baker, Executive Director Regina Mahony, Planning Program Manager
Eleni Churchill, Trans. Program Mgr. Forest Cohen, Senior Business Manager
Amy Irvin Witham, Business Office Associate

The meeting was called to order at 5:47 p.m. by the Chair, Chris Roy.

1. Changes to the Agenda/Members' Items. There were no changes.
2. Approval of April 3, 2019 Executive Committee Meeting Minutes. MIKE O'BRIEN MADE A MOTION, SECONDED BY ANDY MONTROLL, TO APPROVE THE MINUTES. MOTION CARRIED UNANIMOUSLY.
3. Approval of March 27, 2019 Finance Committee Meeting Minutes. JEFF CARR MADE A MOTION, SECONDED BY MIKE O'BRIEN, TO APPROVE THE MINUTES. MOTION CARRIED UNANIMOUSLY
4. Approve Quarterly Journal Entries (Jan-Mar 2019) MIKE O'BRIEN MADE A MOTION, SECONDED BY JEFF CARR, TO APPROVE THE QUARTERLY JOURNAL ENTRIES. MOTION CARRIED UNANIMOUSLY
5. Review Financial Reports – FY19 (Jul 2018- Mar2019) a. Balance Sheet: Forest reviewed the Balance Sheet with members; Cash in checking, including OCU operating account - \$134,212, Cash in Savings - \$153,469, cash in Money Market, including OCU account, and CDs - \$141,259. Current Assets over Current Liabilities - \$606,210. Deferred Income Communities - \$125,802. Members reviewed the Balance Sheet. Income Statement through March 2019: Forest reviewed the current income statement and explained FY19 has proved to be as difficult a fiscal year as was budgeted. With an indirect rate approximately 10 percentage points lower than actual indirect costs, we are struggling to generate enough revenue to cover costs. Members reviewed the Income Statement. Jeff voiced concerns over swings that are occurring because of our indirect rate changes year to year. Discussion between members ensued. It was noted that we have received excess revenue in previous years to cover this year's deficit. Charlie explained a new negotiated rate with VTRANS for FY20 should help and we expect that the swings should be minimal going forward. b. Cash position/Targets. Forest reviewed the Cash Flow Report. He explained the need to use previously collected cash reserves this fiscal year, with negative income at 100K. He stated March is the first month that shows the transfer of our accounts from Peoples United Bank to the Opportunities Credit Union. OCU should yield better interest amounts on our accounts. Jeff asked if OCU offers the same level of insurance protection on the accounts; Forest explained yes; funds are collateralized to protect funds over the FDIC/NCUA limit from catastrophic events.

6. Review Draft FY19UPWP and Budget. Charlie briefly reviewed the draft FY20 UPWP. The Bolton Valley Community Development Block Grant was approved. He pointed out the pink shaded rows in the UPWP denote work items that were funded and completed in FY19 and will be deleted from the FY20 UPWP. In reference to line 101 on the budget, Andy asked what is an Internal Consultant? Charlie and Forest explained that internal consultants are those we hire for work on the organization itself versus consultants we hire to work on UPWP projects for our member communities, partners, and the region. Forest pointed out that the Internal Consultant expense line for FY20 is budgeted for a compensation study consultant. Charlie pointed out that salaries make up the largest portion of expenses and are going down in FY20 with Bernie's and Peter's retirements. Charlie reviewed the capital expense box noting that we are renewing the current lease and getting renovations to the intern area. However, the total capital expense is coming in significantly less than the \$25,000 noted. The renovations will require some investment in workstations for that area totaling less than \$7,000. Additionally, we would like to replace the conference room tables with ones that have wheels and fold down. Various meetings are held at the CCRPC, narrow tables with wheels will accommodate more flexibility in function and arrangement. The quote for new conference room tables is less than \$6000 and would also be capitalized. There was discussion about the necessity of making this investment including the age and lack of easy flexibility of the current tables. It was noted that the space is used for multiple different public meetings and trainings. MIKE O'BRIEN MADE A MOTION, SECONDED BY JEFF CARR, THAT THE FINANCE COMMITTEE RECOMMENDS THE DRAFT FY19 UPWP & BUDGET TO THE EXECUTIVE COMMITTEE FOR REVIEW. MOTION CARRIED UNANIMOUSLY. Jeff Carr left the meeting at 6:20 P.M.

JOHN ZICCONI MADE A MOTION, SECONDED BY MIKE O'BRIEN, THAT THE EXECUTIVE COMMITTEE RECOMMENDS THE DRAFT FY19 UPWP & BUDGET TO THE BOARD FOR APPROVAL. MOTION CARRIED UNANIMOUSLY.

7. ACT 250 & Section 248 Applications

a. Section 248: Underhill GLC Solar, Beartown Road (#19-1000-NMP) Regina noted that the project meets all criteria and we are in support of this with no concerns. JOHN ZICCONI MADE A MOTION, SECONDED BY BARBARA ELLIOT, TO APPROVE THE SUBMISSION OF THE LETTER TO THE PUBLIC UTILITIES COMMISSION. MOTION CARRIED UNANIMOUSLY

b. Comments on PUC Rulemaking on Net Metering (#19-0855-RULE). Regina stated we are proposing to comment on this draft rulemaking where there is a direct tie to our ECOS Plan and work; much of the draft is out of scope in terms of the work we do. The items we would like to provide comments on are in the letter: 1. we agree with permitting solar canopies over parking lots under the easiest permit process as there are no additional environmental impacts; 2. there are challenges with a maximum net metering allowance of 500kW for individuals who own many properties (for example municipalities and VTrans) and we are asking for some flexibility on that; and 3. there should be a recommendation from both a municipality and the RPC for identification of a preferred site, it just shouldn't be in the form of a "joint" letter. The comment is to clarify approval can be in separate letters from each entity. JOHN ZICCONI MADE A MOTION, SECONDED BY CATHERINE MCMAINS, TO APPROVE THE SUBMISSION OF THE LETTER TO THE PUBLIC UTILITIES COMMISSION. MOTION CARRIED UNANIMOUSLY.

8. Policy Engagement Decision Process. Chris reviewed the discussion at the most recent board meeting about how we decide in which public policy issues we decide to engage. He offered thoughts as to if an organic ad hoc is the best way or if there should be a schedule to review issues.

Charlie noted there have been many internal discussions on how to choose what to be involved in as well as what level of involvement is appropriate. Discussion among members ensued. After the discussion, Charlie suggested that, in addition to addressing issues as they arise on an ad hoc basis, we add a standing agenda item in January and July to discuss policy issues. It was also noted that our policy engagement would be based on our ECOS Plan and our Top Actions for the Next Five Years. This will allow for a discussion with the full board to decide when and how to engage on various topics.

9. Chair/Executive Director Report

- a. Legislative Update. Charlie noted the S96 Clean Water service bill has been voted out of House Natural Resources. The funding gap is now being addressed in House Ways and Means. We succeeded with support from all of the RPCs in getting the enforcement provision eliminated in the latest version. As expected, ACT 250 will remain in the House Natural Resources Committee over the summer, through January.
- b. Annual Meeting. The location for the Annual Meeting will be held at the Mansfield Barn in Jericho. The focus will be on Bernie and Peter's retirement. Guest speakers will include existing and previous board and staff members.

10. CCRPC May 15, 2019 Agenda Review. Members reviewed and discussed the proposed agenda. The need to list Joe Segale early in the agenda was noted. John stated Joe is very engaging and his presentation will likely be very informative.

11. Other Business. There was no further business

12. Executive Session. There was none needed

13. Adjournment. JOHN ZICCONI MADE A MOTION, SECONDED BY ANDY MONTROLL, TO ADJOURN AT 6:55 P.M. MOTION CARRIED UNANIMOUSLY.

Respectfully submitted,
Amy Irvin Witham

June 6, 2019 **DRAFT**

Sarah Shaw
SunCommon Commercial Project Assistant
442 US Route 2
Waterbury, VT 05676

RE: Petition for SunCommon/Green Mountain Power Corporation's Proposed 150kW Solar Canopy at 163 Acorn Lane, Colchester, VT (#19-1324-NMP)

Dear Ms. Shaw,

Chittenden County Regional Planning Commission has received the petition for a Certification of Public Good for a 150kW solar canopy at 163 Acorn Lane in Colchester, VT. We have reviewed this project in light of CCRPC's *2018 Chittenden County ECOS Plan*, which gained a Determination of Energy Compliance from the Vermont Department of Public Service on August 9, 2018.

ECOS Energy Goal

CCRPC finds that this project meets the intent of the Energy Goal (Goal #17) of the *2018 ECOS Plan*: "Move Chittenden County's energy system toward a cleaner, more efficient and renewable system that benefits health, economic development, and the local/global climate by working towards the State's Comprehensive Energy Plan goals."

Strategy 2, Action 4b of the ECOS Plan states "CCRPC supports the generation of new renewable energy in the County to meet the Vermont Comprehensive Energy Plan's goals of using 90% renewable energy by 2050, in a manner that is cost effective and respects the natural environment". Development of this solar facility helps implement this action. The Plan's suitability policies help determine whether projects are cost effective, and the Plan's constraint policies help determine whether projects respect the natural environment.

Suitability Policies

The *2018 ECOS Plan* recommends the location of renewable energy generation facilities in appropriate locations, as defined by the policies in Strategy 2, Action 4b. The project as proposed advances the following suitability policies:

- The project is located proximate to 3-phase power in an area with adequate grid capacity.
- The project is located on a previously impacted area.
- The project is located in an area planned for growth.

The 2018 ECOS Plan strongly supports the building of renewable energy facilities on areas that are already impacted, including rooftops and parking lots. Therefore, the location of this project meets the suitability policies of the *2018 ECOS Plan*.

Constraints

The 2018 ECOS Plan states that ground mounted renewable energy generation is constrained in certain areas due to state and local restrictions on development. Strategy 2, Action 4b states: "Site renewable energy generation to avoid state and local known constraints and to minimize impacts to state and local possible constraints, as defined in Strategy 3, Action 1.f, and Strategy 4, Action 1.f, and Action 2.e. Renewable energy generation sited on existing structures or parking lots complies with this policy."

This project will be located on an existing parking lot. **Therefore, CCRPC finds that this project complies with the siting constraint policies in the ECOS Plan.**

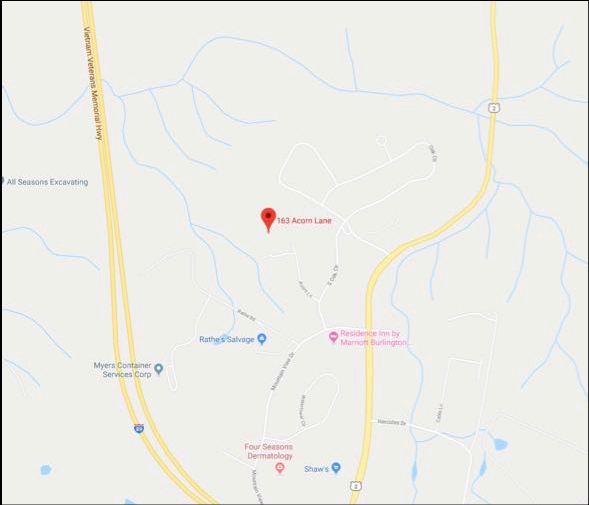
These comments are based on information currently available; we may have additional comments as the process continues.

Please feel free to contact me with any questions.

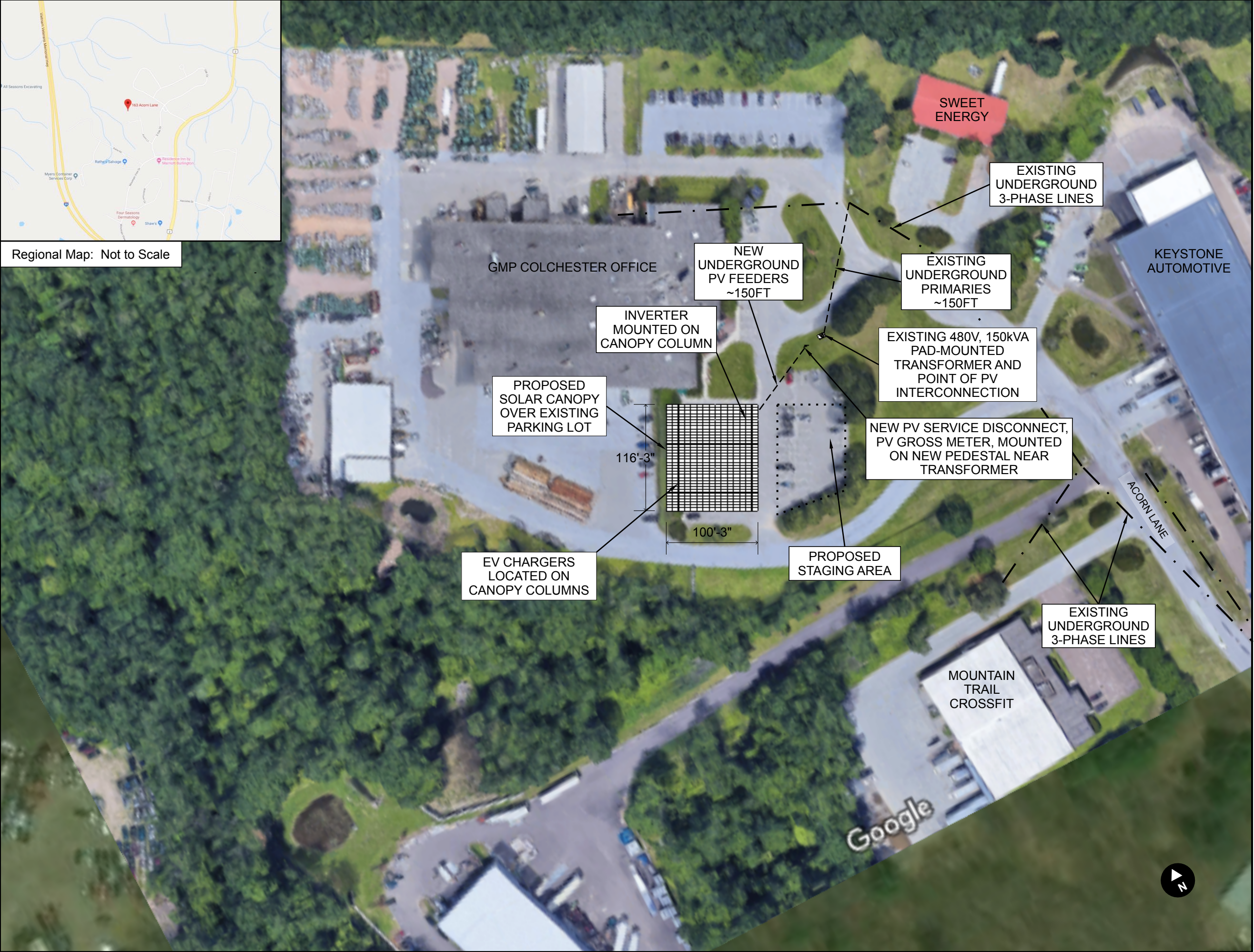
Sincerely,

Charlie Baker
Executive Director

cc: CCRPC Board
Sarah Hadd, Colchester Director of Planning and Zoning



Regional Map: Not to Scale



suncommon

442 US Route 2
Waterbury, VT 05676
Commercial Design: (802) 882-8677

Sheet: PV-A3
Title: Site Plan
Scale: 1" = 100'

Client: Green Mountain Power
Mailing Address: 163 Acorn Lane Colchester, VT 05446

Site Address: 163 Acorn Lane Colchester, VT 05446

Description: Canopy Mounted Photovoltaic (PV) System
System Size: 207.4kW_{DC} (STC), 150.0kW_{AC}
Module Model: Q.Peak Duo L-G5.2 395
Total # of Modules: 525
Inverter Model: CPS
Canopy: RBI Longspan 3°
Azimuth: 118°(True)
Tilt: 3°

Author	Revision Date
SRF	12/21/2018
SRF	01/25/2019
SRF	01/28/2019
Reviewer	Review Date
—	—/—/—

NOT FOR CONSTRUCTION

June 6, 2019 **DRAFT**

Eric Phaneuf, Director of Business Development
Aegis Renewable Energy, Inc.
340 Mad River Park, Suite 6
Waitsfield, VT 05673
ephaneuf@aegis-re.com

RE: Advance Notice of Petition for Aegis Renewable Energy's Proposed 500kW Solar Array near 3943 Roosevelt Highway in Colchester, VT (Case #19-1448-AN)

Dear Mr. Phaneuf:

Chittenden County Regional Planning Commission has received the 45-day notice of a Section 248 Petition to be filed with the Vermont Public Utility Commission for a 500kW net metered solar array located 1,100 feet west of 3943 Roosevelt Highway in Colchester, VT. We have reviewed this project in light of CCRPC's 2018 *Chittenden County ECOS Plan*, which gained a Determination of Energy Compliance from the Vermont Department of Public Service on August 9, 2018.

ECOS Energy Goal

CCRPC finds that this project meets the intent of the Energy Goal (Goal #17) of the 2018 *ECOS Plan*: "Move Chittenden County's energy system toward a cleaner, more efficient and renewable system that benefits health, economic development, and the local/global climate by working towards the State's Comprehensive Energy Plan goals."

Strategy 2, Action 4b of the ECOS Plan states "CCRPC supports the generation of new renewable energy in the County to meet the Vermont Comprehensive Energy Plan's goals of using 90% renewable energy by 2050, in a manner that is cost effective and respects the natural environment". Development of this solar facility helps implement this action. The Plan's suitability policies help determine whether projects are cost effective, and the Plan's constraint policies help determine whether projects respect the natural environment.

Suitability Policies

The 2018 *ECOS Plan* recommends the location of renewable energy generation facilities in appropriate locations, as defined by the policies in Strategy 2, Action 4b. The project as proposed meets the following suitability policies:

- The project is located in an area with adequate grid capacity.
- The project is outside of any state designated centers or historic districts.
- The project's location has been designated as a preferred site by the Town of Colchester (see the town's letter to the PUC dated May 28, 2019, which refers to this site via its tax map address, 0 Creek Farm Road).

CCRPC finds that the general location of this project meets the suitability policies of the 2018 *ECOS Plan*.

Constraints

The 2018 *ECOS Plan* states that ground mounted renewable energy generation is constrained in certain areas due to state and local restrictions on development. Strategy 2, Action 4b states: "Site renewable

energy generation to avoid state and local known constraints and to minimize impacts to state and local possible constraints, as defined in Strategy 3, Action 1.f, and Strategy 4, Action 1.f, and Action 2.e. Renewable energy generation sited on existing structures or parking lots complies with this policy.”

CCRPC has reviewed the constraints that exist on the site of the proposed project. Based on our review of this project’s location using the ANR Natural Resources Atlas and the conceptual site plan, it appears that statewide agricultural soils will be impacted by this project. CCRPC will defer to the Vermont Agency of Agriculture, Food and Markets in determining the impact of development on agricultural soils. **CCRPC is not requesting further information or action related to this constraint at this time.**

These comments are based on information currently available; we may have additional comments as the process continues. We understand that the project may change between the advance notice and the final application. CCRPC will review the project location again after the final application is submitted to confirm our initial findings above.

Please feel free to contact me with any questions.

Sincerely,

Charlie Baker
Executive Director

cc: CCRPC Board
Sarah Hadd, Director of Planning and Zoning, Colchester
Sean Cannon, Planning and Zoning Coordinator, Colchester

ELECTRICAL EQUIPMENT INFORMATION

SOMERA V9M.72.370.03.04 - VIKRAM SOLAR
QTY: 1986 370W

SUNNY HIGHPOWER PEAK3 125-US, 5MA
QTY: 4 125.0KW

ELECTRICAL CHARACTERISTICS (STC)

- MAX. POWER CURRENT (IMP): 9.63A
- MAX. POWER VOLTAGE (VMP): 38.40V
- SHORT CIRCUIT CURRENT (ISC): 9.90A
- OPEN CIRCUIT VOLTAGE (VOC): 48.00V
- SIZE: 77"x39.1"x1.4"
- WEIGHT: 45.63LBS.

UTILITY INFORMATION

GREEN MOUNTAIN POWER

INPUT (DC)

- MAX. DC POWER MODULE: 187,500W
- MIN. MPP VOLTAGE: 710 VDC
- MAX. MPP VOLTAGE: 1425 VDC
- MAX. SYSTEM VOLTAGE: 1500V
- MAX. INPUT CURRENT: 180 ADC
- MAX. INPUT SHORT CIRCUIT CURRENT: 325 ADC

OUTPUT (AC)

- RATED AC POWER OUTPUT: 125,000 W
- MAX. AC POWER: 125,000 VA
- MAX. OUTPUT CURRENT: 151 A

Line Legend

FENCELINE

UNDERGROUND CONDUIT

OVERHEAD WIRE

WETLANDS

PROPERTY LINE

PROPERTY LINE SETBACK

PRIME AGRICULTURE

WETLAND SETBACK

EXISTING TREE LINE

Hatch Legend

WETLANDS

PV ARRAY ROW

RARE SPECIES

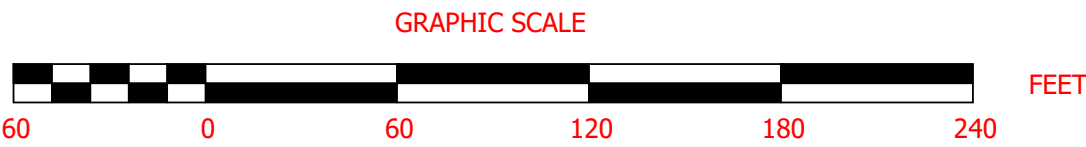
PRIME AG - PRIME

PRIME AG - STATE

PRIME AG - STATE (b)



SITE PLAN
1" = 60'



aegis

RENEWABLE ENERGY

ATTN: TOM FLYNN - TFLYNN@AEGIS-RE.COM
340 MAD RIVER PARK, SUITE 6
WAITSFIELD, VT 05673
802-560-0055
WWW.AEGIS-RE.COM

REVISIONS		
NO.	DESCRIPTION	DATE
1	CON. EDIT - MOVE ARRAY	5/25/18
2	MODULE TYPE CHANGE	5/07/19

ATTACHMENT B - SITE PLA

USE OF THESE DRAWINGS
1. UNLESS OTHERWISE NOTED, THESE DRAWINGS ARE INTENDED FOR PRELIMINARY PLANNING, COORDINATION WITH OTHER DISCIPLINES OR UTILITIES, AND/OR APPROVAL FROM REGULATORY AUTHORITIES. THEY ARE NOT INTENDED AS CONSTRUCTION DRAWINGS UNLESS NOTED AS SUCH OR MARKED APPROVED BY A REGULATORY AUTHORITY.

2. BY USE OF THESE DRAWINGS BY PARTIES OTHER THAN AEGIS RENEWABLE ENERGY FOR CONSTRUCTION OF THE PROJECT, THE ENTITY REPRESENTS THAT THEY HAVE REVIEWED, APPROVED, AND ACCEPTED THE DRAWINGS, OBTAINED ALL NECESSARY PERMITS, AND HAVE MET WITH ALL APPLICABLE PARTIES/DISCIPLINES, INCLUDING, BUT NOT LIMITED TO, CONTRACT DOCUMENTS, SPECIFICATIONS, OWNER/CONTRACTOR AGREEMENTS, BUILDING AND MECHANICAL PLANS, PRIVATE AND PUBLIC UTILITIES, AND OTHER PERTINENT PERMITS FOR CONSTRUCTION.

3. AEGIS AND THEIR ENGINEER, ARE RESPONSIBLE FOR FINAL DESIGN AND LOCATION OF BUILDINGS SHOWN, INCLUDING AN AREA MEASURED FIVE (5) FEET AROUND ANY BUILDING AND COORDINATING FINAL UTILITY CONNECTIONS SHOWN ON THESE PLANS.

4. PRIOR TO USING THESE PLANS FOR CONSTRUCTION LAYOUT, THE USER SHALL CONTRACT AEGIS RENEWABLE ENERGY TO ENSURE THE PLAN CONTAINS THE MOST CURRENT REVISIONS.

5. THESE DRAWINGS ARE SPECIFIC TO THE PROJECT AND ARE NOT TRANSFERABLE. AS INSTRUMENTS OF SERVICE, THESE DRAWINGS AND COPIES THEREOF, FURNISHED BY AEGIS RENEWABLE ENERGY ARE ITS EXCLUSIVE PROPERTY. CHANGES TO THE DRAWINGS MAY ONLY BE MADE BY AEGIS RENEWABLE ENERGY. IF ERRORS OR OMISSIONS ARE DISCOVERED, THEY SHALL BE BROUGHT TO THE ATTENTION OF AEGIS RENEWABLE ENERGY IMMEDIATELY.

6. IT IS THE USER'S RESPONSIBILITY TO ENSURE THIS COPY CONTAINS THE MOST CURRENT REVISIONS. IF UNSURE, PLEASE CONTACT AEGIS RENEWABLE ENERGY

PLAN TYPE - USE

CONCEPTUAL - FOR INITIAL
SIZING-LAYOUT PURPOSES
ONLY

PROJECT TITLE AND DETAILS

MUNSON PV ARRAY
3943 ROOSEVELT HWY
COLCHESTER, VT 05446
734.82 KW DC
500 KW AC

SHEET TITLE

SITE PLAN

DATE:	05/08/2018
SCALE:	1"=60'
PROJECT NUMBER:	18MUNPV01
DRAWN BY:	KB
PROJECT ENGINEER:	TAF
APPROVED BY:	TAF
FILE LOCATION:	SITE LAYOUT /

C2-01.1

June 5, 2019 **DRAFT**

Phillip D. Foy
General Counsel
Encore Renewable Energy
110 Main Street, Suite 2E
Burlington, VT 05401

RE: Advance Notice of Petition for ER Steamboat Solar LLC's Proposed 150kW Project in Shelburne, VT – 6000 Shelburne Road (Case #19-1493-AN)

Dear Mr. Foy:

Chittenden County Regional Planning Commission has received the 45-day notice of a Section 248 Petition to be filed with the Vermont Public Utility Commission for a 150kW solar project at 6000 Shelburne Road in Shelburne, VT. We have reviewed this project in light of CCRPC's *2018 Chittenden County ECOS Plan*, which gained a Determination of Energy Compliance from the Vermont Department of Public Service on August 9, 2018.

ECOS Energy Goal

CCRPC finds that this project meets the intent of the Energy Goal (Goal #17) of the *2018 ECOS Plan*: "Move Chittenden County's energy system toward a cleaner, more efficient and renewable system that benefits health, economic development, and the local/global climate by working towards the State's Comprehensive Energy Plan goals."

Strategy 2, Action 4b of the ECOS Plan states "CCRPC supports the generation of new renewable energy in the County to meet the Vermont Comprehensive Energy Plan's goals of using 90% renewable energy by 2050, in a manner that is cost effective and respects the natural environment." Development of this solar facility helps implement this action. The Plan's suitability policies help determine whether projects are cost effective, and the Plan's constraint policies help determine whether projects respect the natural environment.

Suitability Policies

The *2018 ECOS Plan* recommends the location of renewable energy generation facilities in appropriate locations, as defined by the policies in Strategy 2, Action 4b. The project as proposed meets the following suitability policies:

- The project is located in an area proximate to existing distribution and transmission infrastructure with adequate grid capacity.
- The project will provide more than 50% of energy produced to the Shelburne Museum. It is therefore a preferred site as defined in the Vermont Public Utility Commission's Net Metering Rule (Rule 5.100).
- The project is located in one of Chittenden County's areas planned for growth (Metro Planning Area).
- The project is outside of any state designated centers or historic districts.

CCRPC finds that the location of this project meets the suitability policies of the *2018 ECOS Plan*.

Constraints

The 2018 *ECOS Plan* states that development should be located to avoid state and local known constraints that have been field verified, and to minimize impacts to state and local possible constraints that have been field verified (Strategy 3, Action 1.f and Strategy 4, Action 1.f and Action 2.e). Our review indicates that some constraints may be impacted by the project.

- Agricultural Soils: Based on the agricultural soils layer shown on the ANR Natural Resources Atlas, it appears that statewide agricultural soils will be impacted by this project. CCRPC will defer to the Vermont Agency of Agriculture, Food and Markets in determining the impact of development on agricultural soils. **CCRPC is not requesting further information or action related to this constraint at this time.**

There might be a “possible local constraint” (significant viewshed) here; I am waiting for more information from Shelburne.

These comments are based on information currently available; we may have additional comments as the process continues. We understand that the project may change between the advance notice and the final application. CCRPC will review the project location again after the final application is submitted to confirm our initial findings above.

Please feel free to contact me with any questions.

Sincerely,

Charlie Baker
Executive Director

cc: CCRPC Board
Dean Pierce, Director of Planning & Zoning, Town of Shelburne



encore
Sustainable Energy
11111
Burlington, VT 05401
802-241-1222

www.encoreenergy.com

ENCORE ENERGY, LLC
11111
Burlington, VT 05401
802-241-1222

ER Steamboat Solar, LLC

Site Plan

225 kWDC / 150 kWAC

NOT FOR CONSTRUCTION

PROJECT INFORMATION

PROJECT NAME: 003 Steamboat Rd
Starkham, VT
05672

OWNER: STARKHAM, INC.

DESIGNER: STARKHAM, INC.

DATE: 08/20/2023

SCALE: 1" = 100'

REVISIONS

NO.	DATE	DESCRIPTION
1	08/20/2023	1. INITIAL DESIGN

PROJECT INFORMATION

PROJECT NAME: 003 Steamboat Rd
Starkham, VT
05672

OWNER: STARKHAM, INC.

DESIGNER: STARKHAM, INC.

DATE: 08/20/2023

SCALE: 1" = 100'

PROJECT INFORMATION

PROJECT NAME: 003 Steamboat Rd
Starkham, VT
05672

OWNER: STARKHAM, INC.

DESIGNER: STARKHAM, INC.

DATE: 08/20/2023

SCALE: 1" = 100'

REVISIONS

NO.	DATE	DESCRIPTION
1	08/20/2023	1. INITIAL DESIGN

PROJECT INFORMATION

PROJECT NAME: 003 Steamboat Rd
Starkham, VT
05672

OWNER: STARKHAM, INC.

DESIGNER: STARKHAM, INC.

DATE: 08/20/2023

SCALE: 1" = 100'

June 5, 2019 **DRAFT**

Phillip D. Foy
General Counsel
Encore Renewable Energy
110 Main Street, Suite 2E
Burlington, VT 05401

RE: Advance Notice of Petition for ER Museum Solar LLC's Proposed 500kW Project in Shelburne, VT – 6000 Shelburne Road (Case #19-1494-AN)

Dear Mr. Foy:

Chittenden County Regional Planning Commission has received the 45-day notice of a Section 248 Petition to be filed with the Vermont Public Utility Commission for a 500kW solar project at 6000 Shelburne Road in Shelburne, VT. We have reviewed this project in light of CCRPC's *2018 Chittenden County ECOS Plan*, which gained a Determination of Energy Compliance from the Vermont Department of Public Service on August 9, 2018.

ECOS Energy Goal

CCRPC finds that this project meets the intent of the Energy Goal (Goal #17) of the *2018 ECOS Plan*: "Move Chittenden County's energy system toward a cleaner, more efficient and renewable system that benefits health, economic development, and the local/global climate by working towards the State's Comprehensive Energy Plan goals."

Strategy 2, Action 4b of the ECOS Plan states "CCRPC supports the generation of new renewable energy in the County to meet the Vermont Comprehensive Energy Plan's goals of using 90% renewable energy by 2050, in a manner that is cost effective and respects the natural environment." Development of this solar facility helps implement this action. The Plan's suitability policies help determine whether projects are cost effective, and the Plan's constraint policies help determine whether projects respect the natural environment.

Suitability Policies

The *2018 ECOS Plan* recommends the location of renewable energy generation facilities in appropriate locations, as defined by the policies in Strategy 2, Action 4b. The project as proposed meets the following suitability policies:

- The project is located in an area proximate to existing distribution and transmission infrastructure with adequate grid capacity.
- The project will provide more than 50% of energy produced to the Shelburne Museum. It is therefore a preferred site as defined in the Vermont Public Utility Commission's Net Metering Rule (Rule 5.100).
- The project is located in one of Chittenden County's areas planned for growth (Metro Planning Area).
- The project is outside of any state designated centers or historic districts.

CCRPC finds that the location of this project meets the suitability policies of the *2018 ECOS Plan*.

Constraints

The 2018 *ECOS Plan* states that development should be located to avoid state and local known constraints that have been field verified, and to minimize impacts to state and local possible constraints that have been field verified (Strategy 3, Action 1.f and Strategy 4, Action 1.f and Action 2.e). Our review indicates that some constraints may be impacted by the project.

- Agricultural Soils: Based on the agricultural soils layer shown on the ANR Natural Resources Atlas, it appears that statewide agricultural soils will be impacted by this project. CCRPC will defer to the Vermont Agency of Agriculture, Food and Markets in determining the impact of development on agricultural soils. **CCRPC is not requesting further information or action related to this constraint at this time.**

There might be a “possible local constraint” (significant viewshed) here; I am waiting for more information from Shelburne.

These comments are based on information currently available; we may have additional comments as the process continues. We understand that the project may change between the advance notice and the final application. CCRPC will review the project location again after the final application is submitted to confirm our initial findings above.

Please feel free to contact me with any questions.

Sincerely,

Charlie Baker
Executive Director

cc: CCRPC Board
Dean Pierce, Director of Planning & Zoning, Town of Shelburne

June 6, 2019 **DRAFT**

Phillip D. Foy
General Counsel
Encore Renewable Energy
110 Main Street, Suite 2E
Burlington, VT 05401

RE: Advance Notice of Petition for ER Jericho Gravel Solar, LLC's Proposed 1.5MW Solar Array off Ethan Allen Road in Jericho, VT (Case #19-1527-AN)

Dear Mr. Foy:

Chittenden County Regional Planning Commission has received the 45-day notice of a Section 248 Petition to be filed with the Vermont Public Utility Commission for a 1.5MW solar array off Ethan Allen Road in Jericho, VT. We understand that a CPG was issued for a 500kW solar array on this site in 2018 and that this CPG would replace the previous one. We have reviewed this project in light of CCRPC's *2018 Chittenden County ECOS Plan*, which gained a Determination of Energy Compliance from the Vermont Department of Public Service on August 9, 2018.

ECOS Energy Goal

CCRPC finds that this project meets the intent of the Energy Goal (Goal #17) of the *2018 ECOS Plan*: "Move Chittenden County's energy system toward a cleaner, more efficient and renewable system that benefits health, economic development, and the local/global climate by working towards the State's Comprehensive Energy Plan goals."

Strategy 2, Action 4b of the ECOS Plan states "CCRPC supports the generation of new renewable energy in the County to meet the Vermont Comprehensive Energy Plan's goals of using 90% renewable energy by 2050, in a manner that is cost effective and respects the natural environment". Development of this solar facility helps implement this action. The Plan's suitability policies help determine whether projects are cost effective, and the Plan's constraint policies help determine whether projects respect the natural environment.

Suitability Policies

The *2018 ECOS Plan* recommends the location of renewable energy generation facilities in appropriate locations, as defined by the policies in Strategy 2, Action 4b. The project as proposed meets the following suitability policies:

- The project is located on a previously impacted site
- The project is outside of any state designated centers or historic districts.

CCRPC finds that the general location of this project meets the suitability policies of the *2018 ECOS Plan*. **CCRPC is highly supportive of projects sited on previously developed sites like this parcel, which is a former gravel pit.**

Constraints

The 2018 ECOS Plan states that ground mounted renewable energy generation is constrained in certain areas due to state and local restrictions on development. Strategy 2, Action 4b states: "Site renewable energy generation to avoid state and local known constraints and to minimize impacts to state and local

possible constraints, as defined in Strategy 3, Action 1.f, and Strategy 4, Action 1.f, and Action 2.e. Renewable energy generation sited on existing structures or parking lots complies with this policy.”

CCRPC has reviewed the constraints that exist on the site of the proposed project. The natural resources assessment and conceptual site plan submitted by the applicant show that there are river corridors and surface water setbacks on the parcel. However, the project’s conceptual location appears to avoid these resources. The conceptual site plan shows that there are statewide primary agricultural soils mapped on this parcel. However, given this parcel’s history as a gravel pit, CCRPC supports locating renewable energy development on this site. **CCRPC is not requesting further information or action related to constraints at this time.**

These comments are based on information currently available; we may have additional comments as the process continues. We understand that the project may change between the advance notice and the final application. CCRPC will review the project location again after the final application is submitted to confirm our initial findings above.

Please feel free to contact me with any questions.

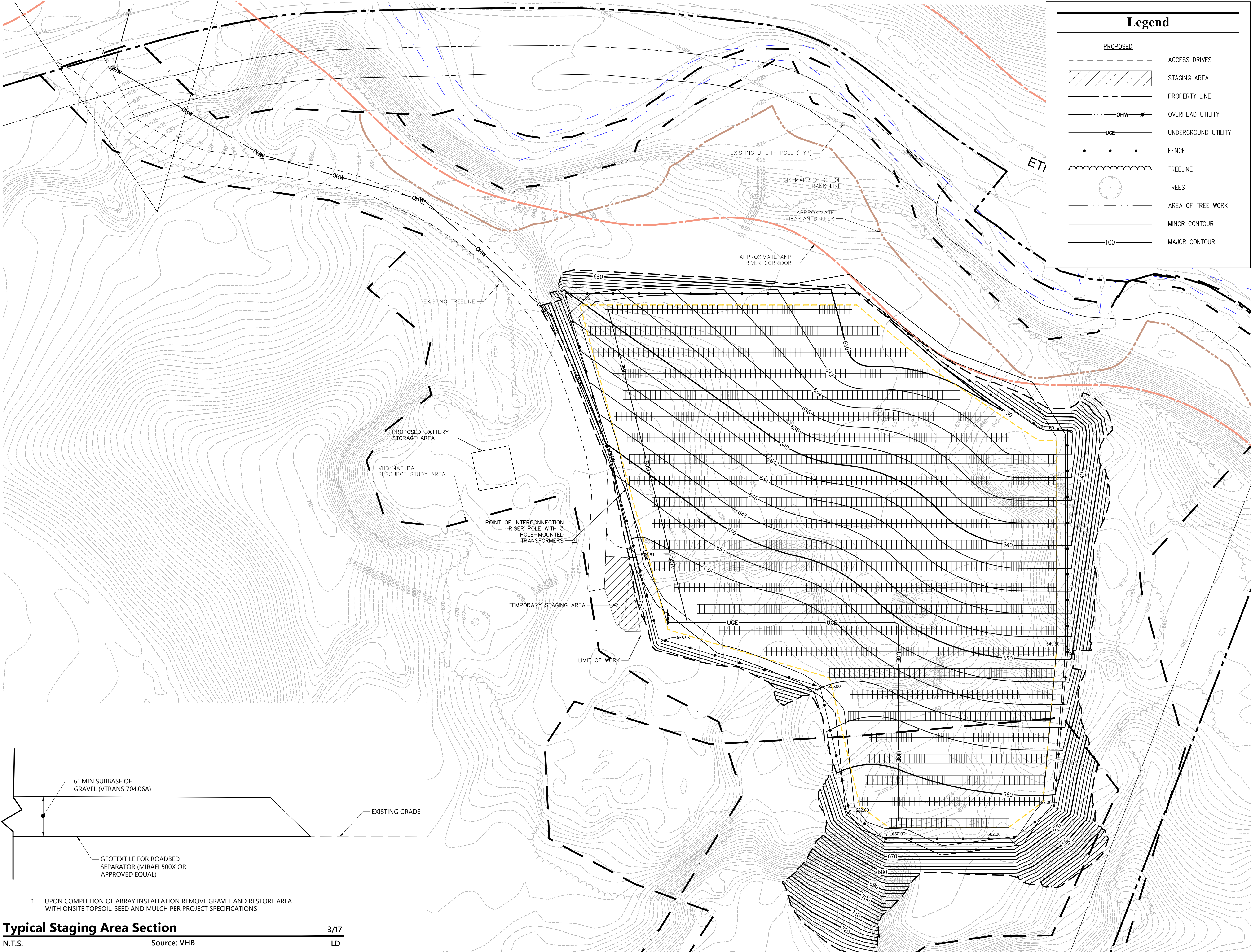
Sincerely,

Charlie Baker
Executive Director

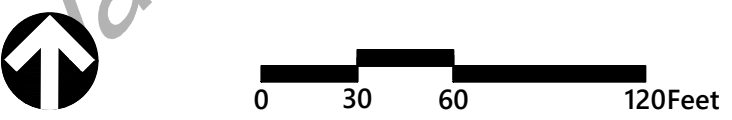
cc: CCRPC Board
Katherine Sonnick, Jericho Planning Coordinator



40 IDX Dr
Building 100 Suite 200
South Burlington, VT 05403
802.497.6100



DRAFT
January 17, 2019



ER Jericho Gravel Solar, LLC kW Solar Project

Ethan Allen Rd
Jericho, Vermont

No.	Revision	Date	Appr'd

Designed by	SMW	Checked by	CAF
Issued for		Date	

Section 248 Permitting Jan. 17, 2019

Not Approved for Construction

Drawing Title

Proposed Conditions Site Plan

Drawing Number

C-02

Sheet 2 of 2

Project Number
57818.00

Typical Staging Area Section
N.T.S. Source: VHB LD_ 3/17



Chittenden County Regional Planning Commission

June 5, 2019

Agenda Item ____: Action Item

FY2020 Schedule of Meetings

Issues:

Vermont's Open Meeting Law requires that public bodies clearly designate the time and place of all regular meetings. Below is the proposed meeting schedule for both the Executive Committee and the CCRPC Commission for the 2020 fiscal year beginning July 2019. Please mark your calendars.

EXECUTIVE COMMITTEE

First Wednesday of the Month

5:45 p.m. – 7:00 p.m.

July 3rd is first Wednesday

July __, 2019 (Prior to board meeting)

NO AUGUST MEETING

September 4, 2019, (Joint w/ Finance. Comm.)

October 3, 2019

November 6, 2019 (Joint w/ Finance Comm.)

December 4, 2019

January 8, 2020

February 5, 2020

March 4, 2020

April 1, 2020

May 6, 2020

June 3, 2020

COMMISSION MEETINGS

Third Wednesday of the Month

6:00 p.m. – 8:00 p.m.

July 17, 2019

NO AUGUST MEETING

September 18, 2019

October 16, 2019

November 20, 2019

Legislative breakfast date TBD

January 15, 2020

February 19, 2020

March 18, 2020

April 15, 2020

May 20, 2020

June 17, 2020 (ANNUAL MEETING)

The Transportation Advisory Committee (TAC) meets the first Tuesday of each month at 9:00 a.m. (except on Town Meeting Day, when they meet on the 1st Wednesday.)

The Clean Water Advisory Committee (CWAC) meets the first Tuesday of each month at 11:00 a.m. (except on Town Meeting Day, when they meet on the 1st Wednesday.)

The Finance Committee meets the 4th Wednesday of each month at 5:45 p.m. as needed.

The Planning Advisory Committee (PAC) generally meets bi-monthly on the 2nd Wednesday of the month from 2:30-4:30 p.m.

Staff Recommendation:

That the Executive Committee recommend approval of the FY2020 Meeting Schedule to the Commission.

Exec. Comm.

Recommendation:

That the Commission approve the FY2020 Meeting Schedule.

For more information
contact:

Charlie Baker – cbaker@ccrpcvt.org

ANNUAL MEETING AGENDA

Wednesday, June 19, 2019, 6:00 pm

The Mansfield Barn, 3 Irish Farm Rd., Jericho, VT



DRAFT AGENDA

5:30 p.m.- Social Hour, hors d'oeuvres, cash bar

6:30 p.m. – Buffet Dinner

6:45 p.m. – Welcome, opening remarks, service recognition, retirement celebrations

8:00 p.m. - Adjournment

CCRPC Business Meeting

1. Call to Order
2. Changes to the Agenda (Action; 1 min.)
3. Public Comment Period on Items NOT on the Agenda
4. Approve Minutes of May 15, 2019 Meeting * (Action; 1 min.)
5. Warn Public Hearing for FY20-23 Transportation Improvement Program (TIP) * (Action: 1 min.)
6. Election of Officers and Executive Committee for FY20 * (Action: 2 min.)
7. FY20 Meeting Calendar* (Action: 1 min.)
8. Chair/Executive Director's Updates (Information; 1 min.)
 - a. Executive Director's Report
9. Committee/Liaison Activities & Reports * (Information; 1 min.)
 - a. Planning Advisory Committee (draft minutes May 8, 2019)*
 - b. Transportation Advisory Committee (draft minutes June 4, 2019)*
 - c. Executive Committee (draft minutes June 5, 2019)*
10. Adjournment

**Attachment*

*In accordance with provisions of the Americans with Disabilities Act (ADA) of 1990, the CCRPC will ensure public meeting sites are accessible to all people. Requests for free interpretive or translation services, assistive devices, or other requested accommodations, should be made to Emma Vaughn, CCRPC Title VI Coordinator, at 802-846-4490 ext. *21 or evaughn@ccrpcvt.org, no later than 3 business days prior to the meeting for which services are requested.*

Upcoming Meetings - Unless otherwise noted, all meetings are held at our offices:

- Transportation Advisory Committee - Tuesday, July 2, 2019; 9:00 a.m.
- Clean Water Advisory Committee -Tuesday, July 2, 2019; 11:00 a.m.
- MS4 Subcommittee – Tuesday, July 2, 2019; noon
- **Executive Committee – Wednesday, July __, 2019; 5:00 p.m.**
- Planning Advisory Committee - Wednesday, July 10, 2019 2:30 p.m.
- CCRPC Board Meeting & TIP Public Hearing- Wednesday, July 17, 2019; 6:00 p.m.

Tentative future Board agenda items:

July 17, 2019	FY20-23 TIP Public Hearing Policy Engagement Decisions Approval of Committees BTV Airport Noise Compatibility Plan
August	NO MEETING
September 18, 2019	Essex Junction Village Plan

Other Potential Topics/Speakers:

VTrans Rail?

UVM-Medical Center Population Health?

South Burlington City Center?

E-assist Bikeshare and E-scooters?

*In accordance with provisions of the Americans with Disabilities Act (ADA) of 1990, the CCRPC will ensure public meeting sites are accessible to all people. Requests for free interpretive or translation services, assistive devices, or other requested accommodations, should be made to Emma Vaughn, CCRPC Title VI Coordinator, at 802-846-4490 ext. *21 or evaughn@ccrpcvt.org, no later than 3 business days prior to the meeting for which services are requested.*