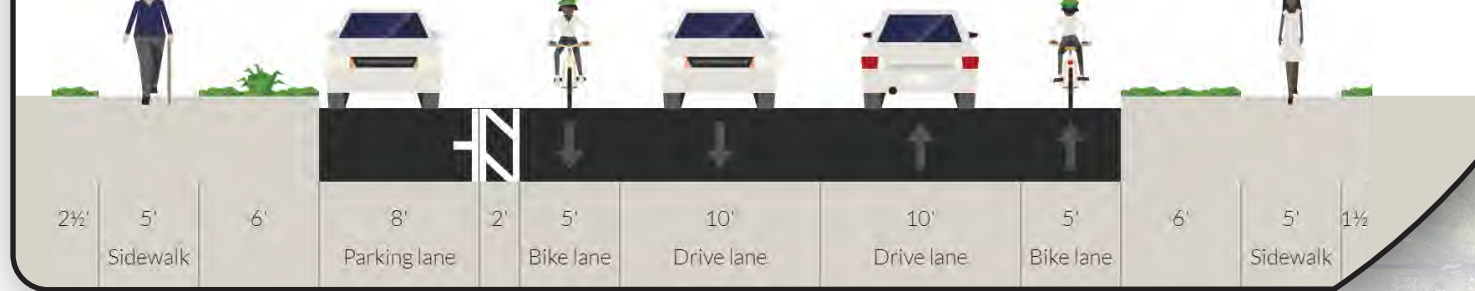


# NORTH END (RIVERSIDE AVE TO PEARL ST)

Looking north toward Riverside Avenue.



## Riverside Ave to Union St



## Riverside Ave to North St



## Union St to North St



## North St to Pearl St



Looking north toward North Street.

**LONGER TERM VISION:**  
**Two-Way Vehicle Traffic**



## North St to Pearl St

Longer Term Vision moves the curb lines to provide two-way (northbound and southbound) vehicle lanes. West side parking is retained, east side parking is removed.

Before any changes, a parking management plan will be conducted to identify strategies on managing the Winooski parking (such as time limits, loading zones, etc.).

### HIGHLIGHTS

- > Can be built in near-term
- > Retains west side parking (122 spaces)
- > Removes 109 spaces on east side
- > Pedestrian improvements at intersections
- > 2019 demonstration of a mini-roundabout at the Union / Decatur intersection

### CONNECTIVITY

- > Two-way vehicle lanes north of North Street
- > Northbound and southbound bike lanes

NOVEMBER 2019

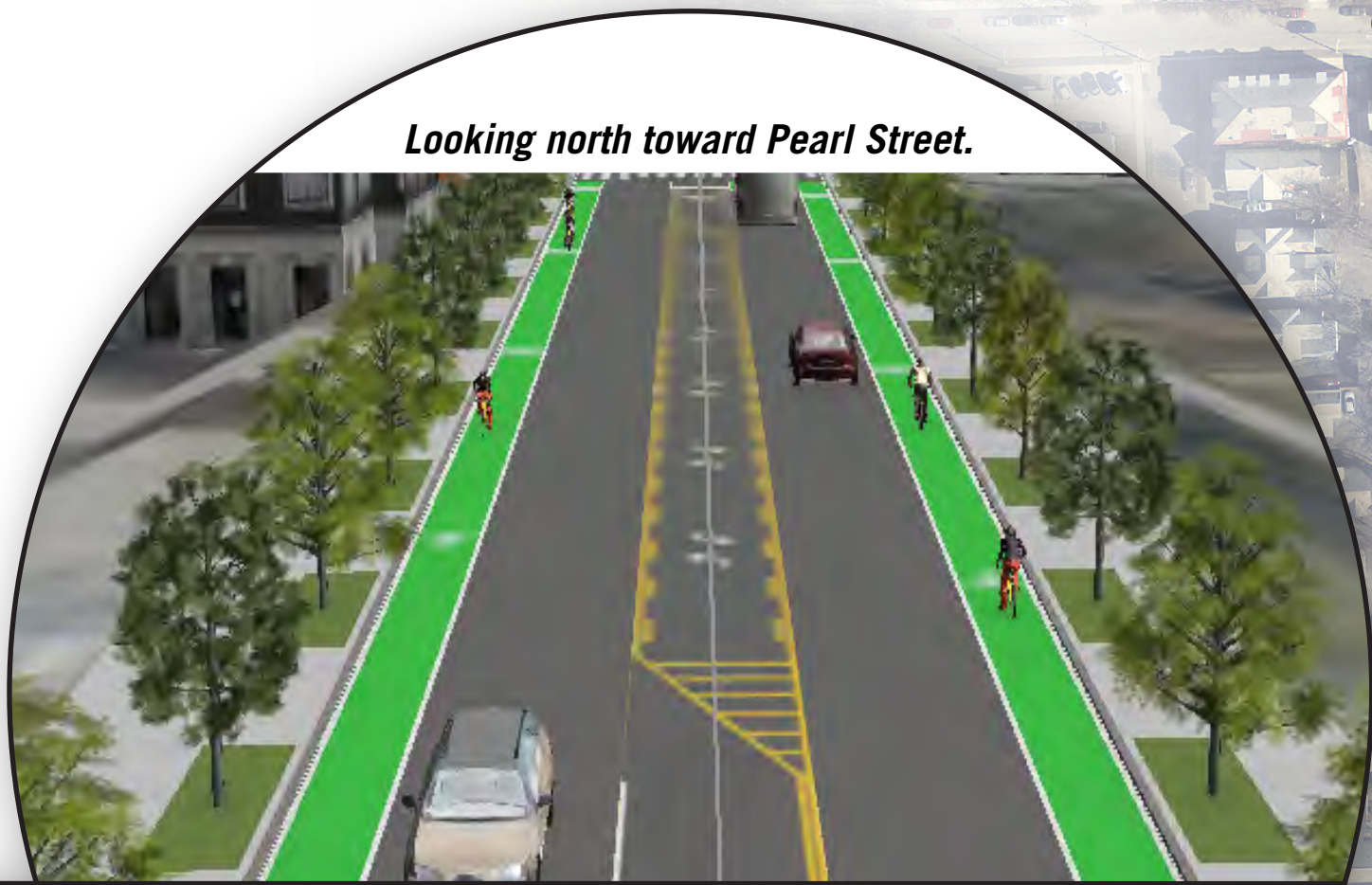


PROJECT WEBSITE: [www.tiny.cc/WinooskiAveStudy](http://www.tiny.cc/WinooskiAveStudy)

CONTACT: Bryan Davis  
bdavis@ccrpcvt.org | 802-861-0129



# DOWNTOWN (PEARL ST TO MAIN ST)



Looking north toward Pearl Street.

## Pearl St to College St



## HIGHLIGHTS

- > Can be built in near-term
- > Improves utilization and safety of existing road capacity
- > Pedestrian improvements at intersections—consider a pilot redesign at Bank Street.

## CONNECTIVITY

- > Two-way vehicle lanes
- > Two-Way-Left-Turn-Lane (center turning lane)
- > Northbound and southbound bike lanes

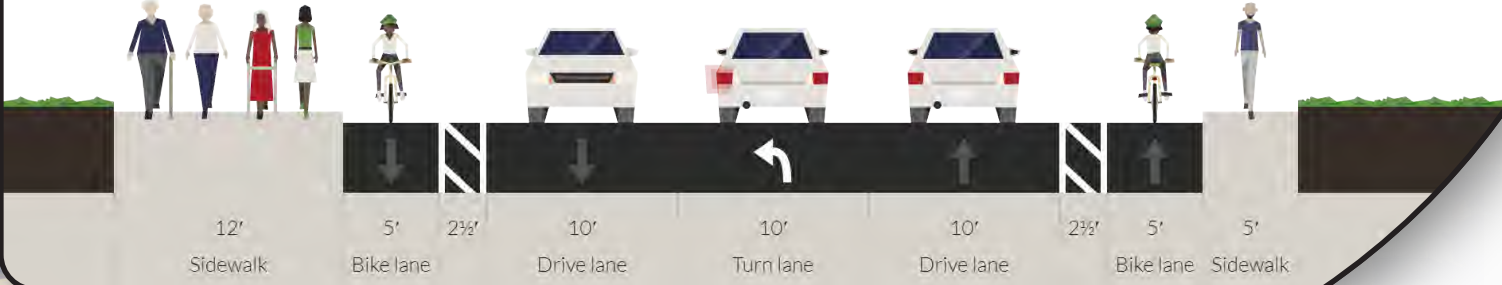
## LONG TERM VISION

Responsive to changes in land use and other significant projects, such as Great Streets projects. Maintain the option to widen the road to provide space for protected bike lanes.



Looking north toward College Street.

## College St to Main St



NOVEMBER 2019



PROJECT WEBSITE: [www.tiny.cc/WinooskiAveStudy](http://www.tiny.cc/WinooskiAveStudy)  
CONTACT: Bryan Davis  
bdavis@ccrprvt.org | 802-861-0129



# SOUTH END (MAIN ST TO HOWARD ST)

