

# Chittenden County Municipal Legislative Breakfast

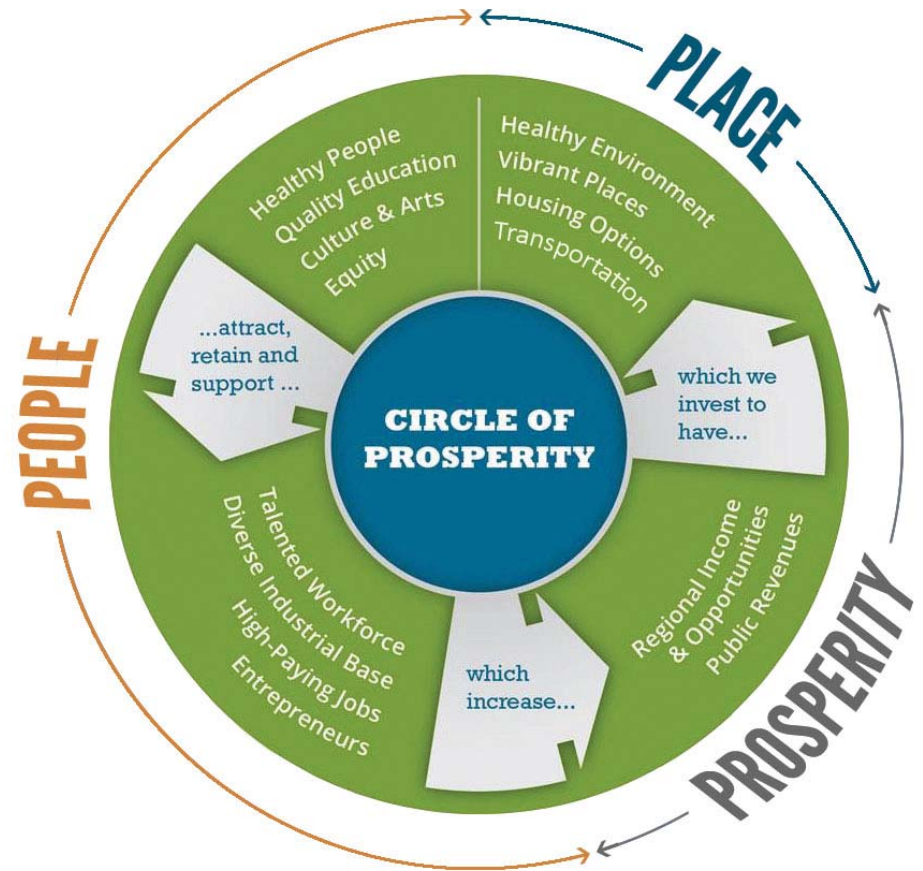
## December 10, 2019

### Agenda & Program

- 7:30 Registration, breakfast, and networking
- 8:00 Welcome – Mike O’Brien, CCRPC Chair
- 8:05 Introductions
- 8:10 Key Issues Presentation and Discussion  
– Charlie Baker, CCRPC Executive Director
- 8:30 Follow-up discussion
- 9:00 Adjourn, continue networking

# Implementing Our ECOS Plan

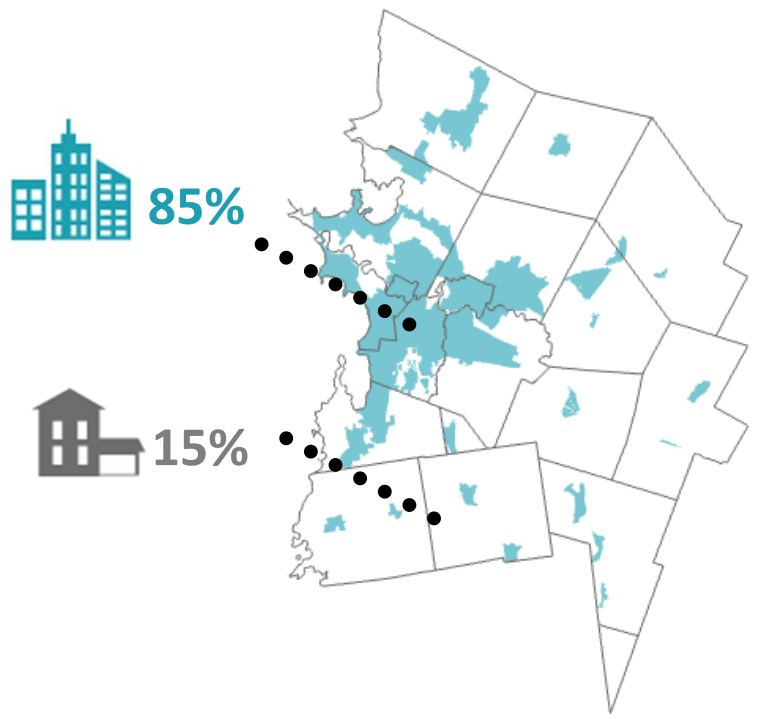
- Circle of Prosperity
- Continued investment in Chittenden County/Northwest VT is critical to further the financial health of Vermont's economy and government expenditures to support the social safety net, environmental protection, and public services.
- **WHEN CHITTENDEN COUNTY PROSPERS, VERMONT PROSPERS**



# Invest in Chittenden County - Smart Growth

## Homes Built in Chittenden County 2013-2018

5-Year Average for Net New Units



## 2018 Smart Growth Result

- Chittenden County has exceeded its [ECOS Plan goal](#) of 80% of development occurring within planned growth areas – 7<sup>th</sup> year.
- Of 620 residential net units built in Chittenden County, **83% (513) were in areas planned for growth.**

- *Improvements to Act 250*
- *Invest/Encourage more housing*
- *Invest in village water/wastewater*

# Invest in Chittenden County - Housing

- This is a critical issue for Chittenden Co. and Vermont
  - More than 25% of homeowners and 50% of renters are cost burdened.
  - Missing middle of housing market between affordable and high end of the market
  - Causing impacts on employee recruitment.
- ***Provide permitting/zoning incentives for housing in smart growth locations.***
  - ***Invest in housing development, especially affordable.***

# Invest in Chittenden County - Act 250 & Permit System Change

- This is a critical issue for Chittenden Co. and Vermont
  - ***Improve incentives or remove barriers for smart growth development***
    - ***Including village wastewater and water***
  - ***Improve communication and coordination between state and municipal permits***
  - ***End any duplication of review between Act 250, State agencies, and municipalities – single review for each issue***

# Invest in Chittenden County - Water Quality Funding

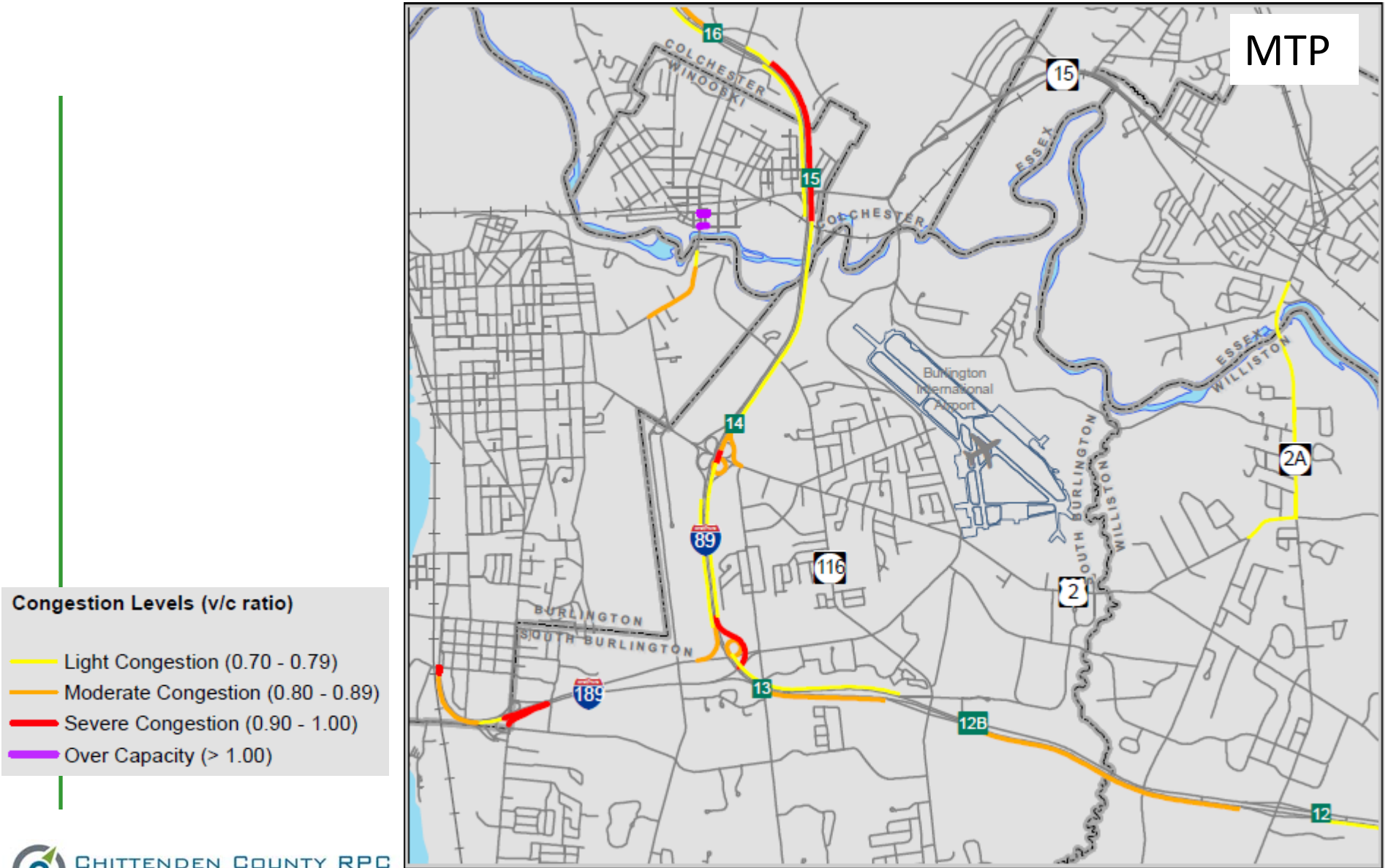
- Thank you for S.96 and making long-term funding commitment to clean water!
- Keep the focus on making investments that have the “biggest bang for the buck.”
  - ***Clean Water Service Providers should help change the relationship with DEC and other partners to one more of partnership. Progress Made! Monitor rule making.***
  - ***Investment in clean water projects will continue to be a need.***

**Note: Please keep in mind that any municipal costs that are not covered by the State will still be borne by taxpayers at the municipal level. 80% cost share is needed.**

# Invest in Chittenden County - Transportation Investments

- 33% of workers in Chittenden County live outside County compared to 25% in 2002. Causes multiple issues: energy, traffic, housing, etc.
- Investment in Chittenden County has been averaging about 15%
- ***Invest in all Capital Program & Transportation Improvement Program (TIP) Projects***
  - ***Circ Alternative Projects need to keep moving***
  - ***Finish legacy projects ( Champlain Parkway, Exit 16, Williston Park & Ride, Amtrak, etc.)***
  - ***Continue to invest in walking, biking, transit, electric vehicles, water quality, and intelligent transportation system projects***

# I-89 2050 Study





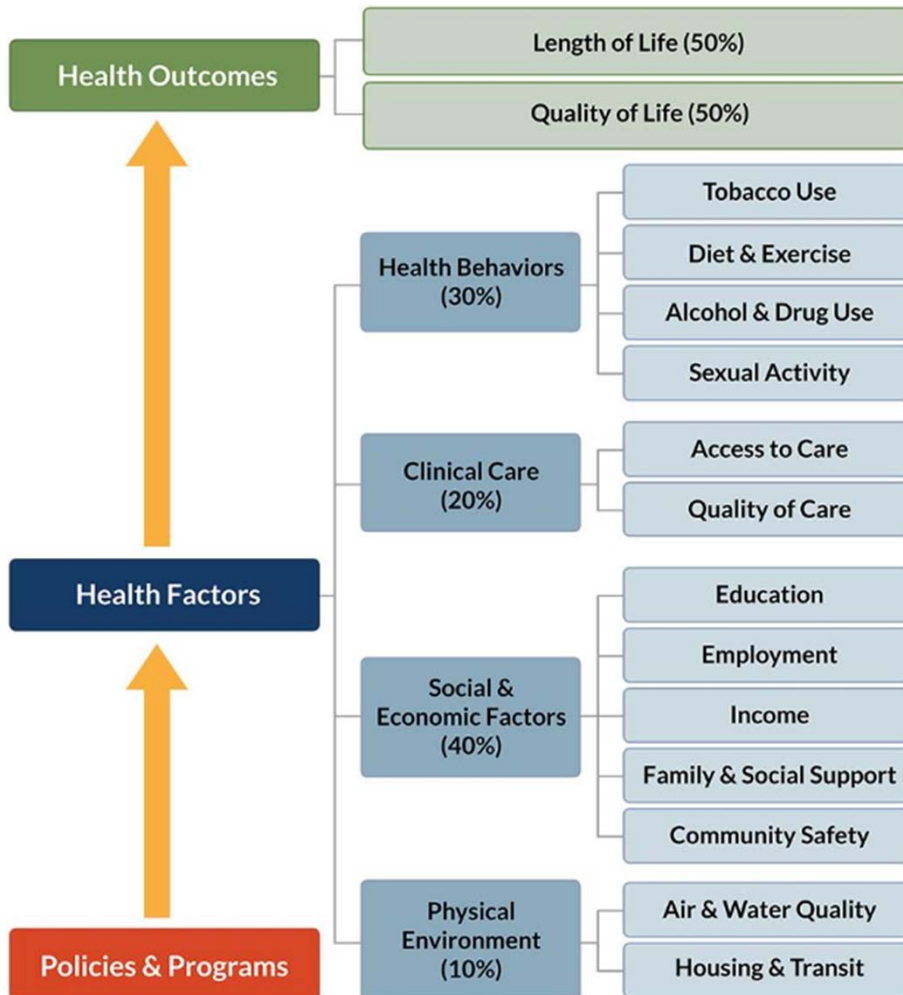
# Invest in Chittenden County - Transportation Climate Initiative

- *Invest in innovative transit solutions*
- *Invest in biking, walking, and other innovative transportation*
- *Invest in livable centers (downtowns, village centers, urban areas)*
  - *Creating areas that aren't dependent on driving*
- *Invest in electric vehicles to convert from fossil fuel vehicles*

---

2019 Municipal Legislative Breakfast

# Invest in Chittenden County - Population Health



County Health Rankings model © 2016 UWPHI

- **Only 10 to 20% of your health is based on clinical care**

- **Invest in social determinants of health – smart growth & workforce development**
- **Support stronger connections between population health initiatives and regional planning and development commissions**

2019 Municipal Legislative Breakfast

# Invest in Chittenden County - Workforce

- Vermont and Chittenden County labor market is at virtual full employment. Both the state and the county are experiencing a plateau in labor force participation, and Chittenden County has seen a net decline in employment from last year.
  - Workforce continues to be one of GBIC's major areas of concentration. Access and exposure to Career Technical Education (CTE) and professionalization of technical & vocational training within education centers is a critical need for both youth and adults. We continue to work with the Governor, his administration officials, and legislators to find ways to enhance these opportunities.
  - VSAC-VSC report Senior Survey of the Class of 2012 to 2016
    - 52% of Vermont High School Graduates either go on to NO higher education or are no longer enrolled within 3 semesters.
- ***Develop Career Pathways program and continue to implement the state workforce development programs in Act 189 report.***

# Mental Health and Substance Use Disorder

- Municipalities, Agency of Human Services, UVM-MC, Howard Center and other partners are working together on these issues
  - Street Outreach; Community Outreach | <http://howardcenter.org/mental-health/community-support/#outreach>
  - CommStat | <https://www.ecosproject.com/chittenden-county-opioid-alliance/alliance/action-teams/communitystat-rapid-intervention-team>
  - Chittenden County Opioid Alliance | <https://www.ecosproject.com/chittenden-county-opioid-alliance>
- ***Continued and increased State investment in these innovative interventions is needed.***
- ***Encourage hospital and RPC coordination on population health.***

# Invest in Chittenden County - Regional & Municipal Planning

- Regional Planning and Municipal Grant funding through ACCD has not increased in 6 years
- More demands to help:
  - Water quality, Energy, Resilience, Climate, Economy, Health, etc.
- ***Support an increase in Property Transfer Tax funds to the Municipal and Regional Planning Fund closer to the statutory formula of 17% of the PPT***
  - *RPCs were at 56% (~\$2M less) of the formula in FY19*
  - *MPGs were at 31% (~\$1M less) of the formula in FY19*

# CCRPC Resources

- **ECOS Scorecard** | 90+ indicators tied to our ECOS Plan goals relating to people, place, and prosperity | <https://app.resultsscorecard.com/Scorecard/Embed/8502>
  - **Our Communities** | A link to all of our municipalities; our current and past work with each; links to their websites; basic data | <https://www.ccrpcvt.org/our-communities/>
  - **Current Transportation Projects** | Organized by topic | <https://www.ccrpcvt.org/our-work/transportation/current-projects/>
  - **ECOS Map Viewer** | State, regional & municipal data layers | <http://map.ccrpcvt.org/ChittendenCountyVT>
  - **Data** | Links to various transportation, socioeconomic, and geo data | <https://www.ccrpcvt.org/our-work/transportation/data>
  - **Legislative Breakfast Data** | Data discussed or used for background | [https://www.ccrpcvt.org/wp-content/uploads/2019/12/Data-handout-Updated\\_20191209\\_Final.pdf](https://www.ccrpcvt.org/wp-content/uploads/2019/12/Data-handout-Updated_20191209_Final.pdf)
-

# CCRPC Current Work

This is only a snapshot of current CCRPC work; for more information view our 2018 Annual Report at [www.ccrpcvt.org/annual-reports](http://www.ccrpcvt.org/annual-reports)

- **Water Quality** | Completed road erosion inventories for all municipalities. Working with towns to prioritize and develop conceptual designs. Stormwater master plans for rural municipalities.
- **Transportation Studies** | Corridor studies, scoping, safety, traffic signal timing analyses, and inventories.
- **Elderly & Disabled Transportation Program Evaluation** | Working with GMT and United Way and the providers
- **Municipal Energy Plans** | Analysis and plan development assistance to municipalities, following CCRPC's Determination of Energy Compliance.
- **Housing** | Building Homes Together campaign and regional housing convenings.
- **Land Use** | Municipal plan, bylaw, and capital program assistance
- **Community Justice** | Hosted summit in Oct. 2019. Developing more efficient system for Chittenden County with DOC and municipalities.

**Thank you!**  
**We are a resource to you!**  
**Questions/Discussion?**

Please contact us for any assistance:

Charlie Baker, Executive Director

[cbaker@ccrpcvt.org](mailto:cbaker@ccrpcvt.org)

802-735-3500 (cell)

[www.ccrpcvt.org](http://www.ccrpcvt.org)

[www.ecosproject.com](http://www.ecosproject.com)