

Agenda
Executive Committee
Wednesday, July 7, 2021 – 5:45 p.m.
Small Conference Room, CCRPC Offices
110 West Canal Street, Suite 202, Winooski, VT



Or Remotely:

Join Zoom Meeting: <https://us02web.zoom.us/j/82204274348>

One tap mobile: +16468769923,,82204274348#

Dial in: +1 646 876 9923 Meeting ID: 822 0427 4348

When participating remotely, please wait until you are recognized by the Chair before you speak. For each agenda item, the Chair will make sure to ask if anyone participating remotely would like to speak.

- a. Use the "chat" feature or raise your hand if on video, or ask the Chair to request to speak.*
- b. To ensure everyone is heard, only one person should speak at a time.*
- c. When recognized by the Chair, introduce yourself each time.*
- d. Speak up so everyone in person and on the computer or phone can hear clearly.*
- e. When participating remotely, take steps to avoid background noise, and make sure your microphone/phone is muted when you are not speaking.*

1. Call to Order, Attendance
2. Changes to the Agenda, Members' Items (Action)
3. Approval of the June 2, 2021 Executive Committee Minutes* (Action)
4. TIP amendments* (Action)
5. Updating Bank Account Signers & Resolution* (Action)
6. Act 250 & Section 248 Applications
 - a. BPLC, LLC; South Burlington; #4C0473-7A*
 - b. SL Maple Solar I, LLC; Charlotte #21-2094-AN*
 - c. UVM Solar Research and Test Facility; Burlington; #21-2171-AN*
 - d. Town of Colchester, Preferred Site Request – *letter will be forthcoming* (Action)
7. Legislative Priority check-in* (Discussion)
8. Equity Leadership Team Update (Discussion)
9. Committee member review/volunteers (Discussion)
10. Chair/Executive Director Report (Discussion)
 - a. FY22-25 Transportation Improvement Program
 - b. Public Meetings/Office Opening Update
11. Draft CCRPC Board Meeting Agenda* (Discussion)
12. Other Business (Discussion)
13. Executive Session (requested to discuss personnel matters) (Action)
14. Adjournment (Action)

*Attachments

NEXT MEETING – Executive Committee – Wed. August 4, 2021; 5:45 p.m.

*In accordance with provisions of the Americans with Disabilities Act (ADA) of 1990, the CCRPC will ensure public meeting sites are accessible to all people. Requests for free interpretive or translation services, assistive devices, or other requested accommodations, should be made to Emma Vaughn, CCRPC Title VI Coordinator, at 802-846-4490 ext. *21 or evaughn@ccrpcvt.org, no later than 3 business days prior to the meeting for which services are requested.*

CHITTENDEN COUNTY REGIONAL PLANNING COMMISSION
EXECUTIVE COMMITTEE MEETING MINUTES
DRAFT

DATE: Wednesday June 2, 2021
TIME: 5:45 PM
PLACE: Remote Attendance via ZOOM Meeting John Zicconi, Treasurer
PRESENT: Mike O'Brien, Chair Catherine McMains, Vice Chair
Bard Hill, at large <5000 Andy Montroll, Immediate Past Chair
Chris Shaw, at large >5000 (6:05 PM)
STAFF: Charlie Baker, Executive Director Regina Mahony, Planning Mgr.
Eleni Churchill, Transportation Program Mgr. Forest Cohen, Senior Business Mgr.
Amy Irvin Witham, Business Office Mgr.

1. Call to Order, Attendance. The meeting was called to order at 5:45 PM by the Chair, Mike O'Brien.

2. Changes to the Agenda, Members' Items. There were none.

3. Approval of the May 5, 2021, Joint Executive & Finance Committee Meeting Minutes
CATHERINE MCMAINS MADE A MOTION, SECONDED BY JOHN ZICCONI, TO APPROVE THE MAY 5, 2021, JOINT EXECUTIVE & FINANCE COMMITTEE MEETING MINUTES, AS PRESENTED. MOTION CARRIED UNANIMOUSLY.

4. Act 250 & Section 248 Applications

a. Town of Hinesburg, Application #4C1336 – ratification.

Regina reminded members they previously received the draft form of this letter for review in an e-mail on May 13, 2021. This is phase one of a two phase project to make necessary upgrades to the wastewater treatment plant in Hinesburg. The project is located at 290 Lagoon Road and serves the village of Hinesburg. The CCRPC has reviewed the Act 250 Letter and found the project is in conformance with the Planning Areas of the 2018 Chittenden County ECOS Plan, as it is located within both the Rural Planning Area and the Hinesburg Village Planning area (as defined in the 2018 Chittenden County ECOS Plan). Wastewater treatment plan upgrades to meet the requirements of the Total Maximum Daily Load (TMDL) for phosphorus in Lake Champlain, including the currently proposed upgrade in Hinesburg, are specifically identified in the ECOS plan to meet this water quality related strategy. The comments are based on the information currently available, the CCRPC may have additional comments as the project moves forward.

JOHN ZICCONI MADE A MOTION, SECONDED BY BARD HILL, TO APPROVE THE LETTER TO RACHEL LOMONACO DISTRICT #4 COORDINATOR, AS PRESENTED. MOTION CARRIED UNANIMOUSLY.

5. Review DRAFT FY22-25 TIP

Eleni referred members to the Draft FY22-25 Transportation Improvement Program (TIP) document and corresponding Memo included with the packet. Eleni provided an overview for members and said she would answer any questions they had. She explained the staff recommendation is that the Executive Committee ask the Board to warn a public hearing at their June meeting and to approve the TIP at the July Board meeting. Eleni also wanted to share a notable item that Christine shared with the TAC; Christine said the TIP is projected to have significantly higher funds in the next two

years as compared with previous TIPs as some largescale projects come together in the county. She also said the TIP is meant to be a planning document not the actual capital program, and construction schedules shift as projects progress.

JOHN ZICCONI MADE A MOTION, SECONDED BY BARD HILL, TO RECOMMEND THE BOARD WARN FOR PUBLIC HEARING AND APPROVE THE FY22-25 TIP AT THE JULY BOARD MEETING. MOTION CARRIED UNANIMOUSLY.

6. VPSP2 Draft Scoring and Ranking

Eleni referred members to the following VPSP2 documents included with the packet; VPSP2 Memo, VPSP2 Transportation Values chart, VPSP2 Project Input Data chart and the Racial Equity Report: Equity Review of Regionally Driven Capital Projects. Eleni reminded members we have discussed the VPSP2 project selection and prioritization process at previous meetings. Eleni said we received the VTrans transportation values for all projects and Christine Forde added the regional scores in the appropriate categories, so we now have the total project scores. The CCRPC also started developing a methodology to address equity.

The memo outlines the process and explains Transportation equity is not currently a VPSP2 criterion, but it is necessary to ensure public funds are allocated to projects that minimize burdens and maximize benefits to traditionally underserved populations. CCRPC has created a pilot transportation equity screening process to incorporate equity into the VPSP2 process. The transportation equity screening process considered a variety of factors including race, linguistic isolation, and income below the poverty level, to identify project areas with higher numbers of underserved populations. The process also considered the extent to which the type of infrastructure improvements might either positively (e.g., improving safety, walkability) or negatively (e.g., new facility construction, road widening) impact adjacent populations.

Eleni reviewed the 2021-VTrans VPSP2 – Preliminary Transportation Values for CCRPC Projects chart with members and provided an overview of the following sections:

- The Asset Driven Potential Paving Projects and Slab Removal Projects section included the following projects, in order, based on the Transportation Value and corresponding ranking:
 - St. George – Williston, Rt 2A Paving
 - Colchester- Essex, Rt 15 Paving
 - Colchester – Milton, US 7 Paving
 - Colchester – Milton - Georgia, US 7 Slab Removal
 - Hinesburg – South Burlington, VT 116 Paving
 - Williston, US 2 Slab Removal
 - Essex – Fairfax, VT 128 Paving
- The Potential Roadway and Traffic & Safety Projects: Asset Driven and Regionally Driven section included the following projects, in this order:
 - Shelburne, US7/Harbor Road
 - South Burlington, US2 intersection and Roadway improvements, Dorset to VT 116
 - Winooski, East Allen Street improvements
 - Essex Jct., Train Station Access, and Circulation improvements
 - Burlington, Main Street/Battery to Union multi-modal streetscape improvements
 - Burlington, Colchester Ave/Riverside Ave intersection improvements
 - Colchester, Bayside Roundabout
 - Burlington, Colchester Ave/Prospect St intersection improvements

- Williston, Exit 12 Stage 3 Diverging Diamond interchange/CIRC Alt Phase III
- St. George, VT 2A/ VT 116
- Jericho, VT117/Skunk Hollow Road
- Milton, US 7/Racine/Legion/Bartlett/West Milton Rd improvements
- Williston, Mtn View Road multi modal improvements
- South Burlington, VT 116/Cheesefactory Road
- Williston, Exit 12 Stage 2/new Grid Streets and VT 2A intersection, CIRC Alt Phase III
- Essex, North Williston Road Hazard Mitigation, CIRC Alt Phase III

Eleni explained this information was presented at the June 1, 2021, Transportation Advisory Committee meeting (TAC). The TAC voted to accept the transportation values and corresponding rankings of all projects as presented and recommended the transportation values and rankings be presented to the Executive Committee and Board for acceptance. Eleni said the TAC voted only on the transportation values as presented in the *2021 VTrans VPSP2 – Preliminary Transportation Value for CCRPC Projects* table and did not vote on the equity screening.

In addition, the TAC provided comments on the transportation values of the projects and a possible equity screening/methodology for VTrans' consideration. Eleni explained that the next step is for the CCRPC and all other RPCs to submit their transportation project values to VTrans for a statewide ranking and selection of projects that will be included in the VTrans proposed FY23-27 Capital Program (CP) once all current CP obligations are met. Some of the regional projects we proposed will end up being in the Capital Program for year 4 and later. We will receive the list from VTrans in September as to how they propose to program our recommended projects.

Bard asked if there was a change in the categories and if the slab removal was a new category? Eleni stated that there were always projects under this category, but they might have been under the Paving instead of the Roadway program. She said that even though these projects are under the Roadway program they are not considered "full-depth reconstruction" projects. CCRPC staff grouped the paving and the slab removal together in the table because it makes sense. Bard asked if the Asset Driven and Slab Removal Projects category were always under the same title? Eleni explained, yes, the slab removal projects are under the asset driven category, but they were combined in the table with the paving projects. Bard questioned this. He feels the characterization may need to be changed, and not called Slab Removal, perhaps it should be in another category. Member discussion ensued regarding the categorization and rankings. Eleni explained, there is a nuance in terms of what can be included in what type of project, slab removal is somewhere in between paving and roadway. Bard explained the most pressing issue for Richmond is that VTrans is not replacing culverts with the US-2 slab removal project next year. Eleni said slab removal projects have some limitations (compared to reconstruction projects); they try to avoid permitting for stormwater infrastructure as well as other permits and they generally stay within the state ROW similar to paving projects. Eleni said we will be sure to incorporate Bard's concerns and comments. Mike reminded everyone the prioritization that we assign will end up being reassessed by VTrans, and a project we set as a top priority could be moved far down the list.

John asked, with the equity scores that we currently have, is there a way to show what a system would do, or are these more of an example? Eleni said the TAC questioned what their role was in terms of the equity piece. The TAC voted purely on the transportation value and ranking. Since they are a technical committee and not fully comfortable addressing the equity component, they decided to leave any equity policy decisions to the Executive Committee and the Board. Eleni reminded

1 everyone this is the pilot program, serving as the starting point. Charlie agreed and for context
2 reminded everyone that equity is not currently incorporated into the VPSP2 scoring criteria, and as
3 presented with just the word "equity" it created confusion as to what is meant by equity. We should
4 get clearer that we mean racial equity. He said TAC members, in general, discussed equity in a
5 broader sense (socioeconomic, age, ability, etc.). When we presented this information to the TAC,
6 they decided they would focus on the technical aspects and leave the policy decisions (racial equity)
7 to the Executive Committee and Board. John asked if this is meant to serve only as an illustration?
8 Charlie explained there are different directions that the board could choose to follow as far as how
9 to address racial equity. We decided to take a quick, first pass at addressing racial equity because
10 VTrans and the Legislature are looking for recommendations as they approach the FY23 Capital
11 Program. In terms of the CCRPC serving our municipalities, it is imperative that we address racial
12 equity as a policy matter. We are trying to determine where this fits into the ranking and scoring in
13 terms of points. The Preliminary Transportation and Ranking Including Equity table provides some
14 possible scenarios that could be followed. The assigned points range from 0 to 20 and we worked on
15 this with Mark Hughes, from the Vermont Racial Equity Association. The Legislature is asking VTrans
16 to incorporate racial equity into the VPSP2 process and CCRPC will partner with VTrans and other
17 RPCs to hire a consultant to help us do that. Charlie explained, from the discussions he has had with
18 VTrans staff, Kevin Marshia and Michele Boomhower, they are open to comments or suggestions we
19 might have to get this conversation further down the road. We took a first look at adding a racial
20 equity evaluation to projects for their consideration.

21
22 John said he understands this is only the starting point, but if VTrans is already looking at working
23 racial equity into the process, are we going to throw the system out of alignment. Member
24 discussion ensued regarding confusion between our scores/ratings and the scores/ratings outlined
25 in the Racial Equity Association Report; Equity Review of Regionally Driven Capital Projects, as
26 prepared by Mark Hughes. Eleni and Charlie explained we are working on sending VTrans the
27 transportation values and providing comments on racial equity for VTrans consideration. John asked
28 what is the next step, in terms of what exactly we are taking to the Commission? Charlie explained,
29 we are providing the background work from CCRPC Staff and Mark Hughes in order that VTrans can
30 have information on how best to incorporate Racial Equity into the VPSP2 process. We are
31 acknowledging this is an important criterion and we need to start someplace. Eleni agreed, and
32 explained we are trying to develop a system and we are at the very beginning stages; we will need
33 to go much further and deeper with this to make it more objective. She agreed with members that
34 there needs to be a clear criterion for racial equity in the VPSP2 process. Members felt there should
35 be an overview presentation and a clear direction in what the Board is voting on in the June
36 meeting. Eleni and Charlie clarified with members the Board should be asked to vote on the
37 Transportation Project Values/Ranking with comments to VTrans on VPSP2 scoring process and
38 racial equity. CCRPC preliminary equity methodology will be forwarded to VTrans for consideration
39 as they develop the statewide equity process. John felt it was important to extend thanks to CCRPC
40 staff for their hard work and many contributions to this effort. Members agreed. Eleni will pass this
41 message along to Bryan and Christine.

42 43 7. Calendar of Meeting Dates

44 Charlie asked members to review the proposed FY22 schedule of meetings for the Commission and
45 Committees between July 2021 through June 2022. Members reviewed. John asked what the
46 September Celebration means. Charlie and Mike explained, like previous annual meetings we held
47 in June, this will be more of a social meeting than a business meeting. Members suggested that we

1 discuss this at the board meeting to determine people's comfort level with meeting in person in
2 September.

3
4 JOHN ZICCONI MADE A MOTION, SECONDED BY CATHERINE MCMAINS, TO RECOMMEND THE
5 MEETING SCHEDULE, AS PRESENTED, TO THE BOARD. MOTION CARRIED UNANIMOUSLY.
6

7 8. Review VELCO Long Range Transmission Plan Comment Letter

8 Regina reminded members of the recent VELCO presentation given at the May Board meeting. She
9 explained the presentation highlighted multiple challenges associated with the State's renewable
10 energy goals. Regina referred members to the VELCO letter included with the packet and said this
11 letter would be presented to the board. Regional Planning Committees are working with the
12 Department of Public Service and assessing the criteria for energy determinations, for instance;
13 Does the criteria make sense? Are there items that need to be updated? Regina explained we will
14 work together because we need to figure out solutions. The staff offered the following draft
15 comments on the VELCO draft plan:

- 16 • CCRPC supports the plan's recommendation to focus on increased electric efficiency and
17 non-transmission alternatives to avoid negative impacts on electric transmission reliability in
18 the short-term.
- 19 • CCRPC understands the requirement that VELCO and the Vermont Systems Planning
20 Committee (VSPC) conduct least-cost integrated planning and seek non-transmission
21 alternatives to reliability issues (30 V.S.A. 218c and PUC Docket 7081). However, CCRPC
22 observes that the findings of the 2021 Vermont Long-Range Transmission Plan clearly
23 indicate that it will be extremely difficult for municipalities, regional planning commissions,
24 and the State of Vermont to achieve the goals of our enhanced energy plans (24 V.S.A.
25 4352) and the State Comprehensive Energy Plan through only non-transmission alternatives.
26 Additional transmission infrastructure will be needed, particularly in northern Vermont, to
27 ensure that each geographic region of the State is able to contribute to our future
28 renewable energy goals. Therefore, CCRPC recommends that VELCO establish a "next steps"
29 section of this plan to include work with all necessary partners to identify and plan for
30 transmission upgrades to ensure the state meets the future energy goals, and identification
31 of best locations for storage near distributed generation.
- 32 • CCRPC also recommends a summary of the findings and an action agenda with specific next
33 steps and identification of responsible entities for a clearer and more concise message to all
34 stakeholders.
35

36 John thanked Regina and staff. He voiced concerns with VELCO's long term strategy for dealing with
37 power distribution, specifically in areas where development calls for power upgrades. He feels the
38 current practice places an enormous financial responsibility upon a single developer, which will
39 (potentially) restrict economic development opportunities. John said he recently discussed this
40 issue with Taylor Newton. Taylor said it has been discussed at various State meetings, and that the
41 Vermont Public Service Department is also concerned. The Vermont Public Utility Commission is also
42 investigating imposing a possible impact fee in northern Vermont where power transmission is
43 already close to capacity. John would like this worked into the letter. Regina agreed and said this can
44 fit under comment number two. Catherine agreed. She feels VELCO needs a proactive approach,
45 that upgrades and planning need to be addressed now to meet the needs of the future. Bard said
46 he feels the plan is reactive rather than proactive, and lack of integration is an issue. Regina thanked
47 members for their comments and committed to updating the draft comment letter for
48 consideration by the board.

1
2 9. Equity Leadership Team Update Charlie said the team recently held their second meeting. He
3 explained we want to ensure we are sharing the information from the meetings with our board and
4 committee members. Mike asked if we have shared the reading materials yet? Charlie said no, in
5 addition to sharing with Board members, we also need to share the information with the TAC, PAC,
6 and various committees. Charlie said there will be information sent out over the next few weeks and
7 then after any subsequent meetings. Charlie said Creative Discourse is going to ask Board Members
8 to participate in an equity screening interview. Mike said we need to make sure everyone is aware
9 this is happening. Amy will e-mail board members once dates are determined. Everyone will be
10 given a choice between two dates for the equity screening interview.

11
12 10. Chair/Executive Director Report

13 a. I-89 2050 Study Update

14 Charlie stated there has only been one I-89 Study meeting since the last Executive Committee
15 meeting with the Central Vermont RPC TAC. We did meet with RSG to explore ways to reduce
16 traffic demands and we are going to hire them to provide strategic modeling analysis on how to
17 reduce traffic demand. Eleni said this will be a great tool for us that we can use in the I-89
18 Study but also during the next MTP update. More information on this will be shared in the fall.

19 b. Legislative Update

20 Charlie explained much of the policy work did not reach fruition. The Rental Registry Bill did not
21 move forward, nor did the Bylaw Modernization Bill. Specific to RPC funding, \$75,000 was
22 approved in additional planning grant funds for each RPC. This money can be spent over a
23 period of one to three years. There is also \$12,000 to \$13,000 in funding to be used to assist
24 municipalities with the ARPA Funding for each of the next couple of years. There was \$1
25 million in brownfield assessment funding passed for RPCs of which we should receive about
26 \$100,000. There was also a last-minute addition of \$1 Million Dollars to be used by RPCs to
27 support towns in implementing their energy plans. We believe that there is an intent for this
28 funding to be more than a one-year commitment. We are likely to receive between \$80,000
29 and \$120,000 in FY22. This will equate to a full-time staff person supporting energy
30 committees around Chittenden County. Regina said our municipalities' energy committees do
31 not typically have any dedicated staff. Catherine agreed, she said Jericho has no staff at all for
32 the energy committee, and funds are very helpful to help educate community members and
33 promote energy initiatives. We are looking into how best to staff these initiatives. Charlie
34 mentioned that Sandy Thibault, the Executive Director for CATMA, is still interested in office
35 sharing. Our staffing needs will be evaluated to see if that idea will make sense.

36
37 11. Draft CCRPC Board Meeting Agenda.

38 Charlie reviewed the June Board agenda with members. Mike suggested we add an Equity
39 Leadership update regarding interviews the Board members will be asked to participate in. Bard said
40 he would like to discuss staff working from home and ways the CCRPC can hold hybrid versions of
41 meetings to accommodate both in-person and video conference meetings. Member discussion
42 ensued. Regina said CATMA is currently doing research on telework trends.

43
44 12. Other Business: There was none.

45
46 13. Executive Session: CHRIS SHAW MADE A MOTION, SECONDED BY JOHN ZICCONI, TO MOVE INTO AN
47 EXECUTIVE SESSION TO DISCUSS PERSONNEL MATTERS WITH THE FOLLOWING MEMBERS IN

ATTENDANCE: MIKE O'BRIEN, CATHERINE MCMAINS, JOHN ZICCONI, CHRIS SHAW, BARD HILL, and staff, CHARLIE BAKER, BEGINNING AT 7:18 PM. MOTION CARRIED UNANIMOUSLY.

CHRIS SHAW MADE A MOTION, SECONDED BY BARD HILL, TO EXIT THE EXECUTIVE SESSION AT 7:43 PM. MOTION CARRIED UNANIMOUSLY.

CHRIS SHAW MADE A MOTION, SECONDED BY BARD HILL, THAT THE EXECUTIVE COMMITTEE RECOGNIZE EMPLOYEE ACHIEVEMENT AND AUTHORIZE THE EXECUTIVE DIRECTOR TO SPEND UP TO 100% OF THE FY22 SALARY BUDGET, AS DETERMINED BY THE EXECUTIVE DIRECTOR, FOR STAFF AND AS DETERMINED BY THE EXECUTIVE COMMITTEE FOR THE EXECUTIVE DIRECTOR. ALL IN ATTENDANCE IN FAVOR.

14. Adjournment: BARD HILL MADE A MOTION, SECONDED BY CHRIS SHAW, TO ADJOURN THE MEETING AT 7:44 PM. MOTION CARRIED UNANIMOUSLY.

Respectfully submitted,
Amy Irvin Witham



CCRPC Executive Committee

July 7, 2021

Consent Item

FY2021 TIP Amendment

Issues: Make the following changes to the FY21 year of the TIP.

Stormwater Retrofit for Four Locations in South Burlington (Project OT050, Amendment FY21-55)

Description of TIP Change: Add \$216,000 in Federal funds for the design of stormwater retrofit best management practices to implement VTrans Flow Restoration Plans. This project will address three locations on I-89 – at Exit 13, Exit 14 and north of Hinesburg Road – and one location on I-189 near Shelburne Road.

Stormwater Retrofit at VT289/VT15, Essex (Project OT049, Amendment FY21-56)

Description of TIP Change: Add \$48,600 in Federal funds for the design of stormwater retrofit best management practices to implement VTrans Flow Restoration Plans. This project will address a location near the VT 289/VT 15 intersection.

VT116/VT2A Intersection Improvements, St. George (Project HP134, Amendment FY21-57)

Description of TIP Change: Add \$65,000 in Federal Highway Safety Improvement Program (HSIP) funds for scoping for this intersection project. The FY20 TIP had \$100,00 for scoping but the funds were not needed in that year. \$20,000 was previously obligated and additional funds are needed to complete scoping.

**Staff/TAC
Recommendation:**

Recommend approval of the proposed TIP Amendments

**For more information
contact:**

Christine Forde
cforde@ccrpcvt.org or 846-4490 ext. *13



Chittenden County Executive Committee

July 7, 2021

Agenda Item 5: Action Item

Updating Bank Account Signers & Resolution

Issues: CCRPC policy is that the Executive Director and the Board Officers of Chair, Vice-Chair, and Secretary/Treasurer are signers on CCRPC bank accounts. Whenever there is a different office holder the signers need to be updated, which requires an action of the Board and some bank paperwork, including a Resolution.

Mike leaving the office of Chair and Chris filling the office of Vice-Chair requires such an update. Catherine and John were already signers, so we only had to update Catherine's title.

The Resolution and the Member Application are both included in the packet with this agenda item. Given the remote nature of our meetings, I will collect signatures from each of you over the next few days. Staff are recommending that you take action recognizing the change in signers and adopt the Resolution as presented.

Staff

Recommendation:

Staff recommends the Executive Committee make a motion recognizing that effective June 30, 2021, with the vacating of the office of Chair, Mike O'Brien is no longer a signer on CCRPC bank accounts; and Chris Shaw by filling the office of Vice-Chair, is a signer on CCRPC bank accounts. Catherine McMains as Chair, and John Zicconi as Secretary/Treasurer, remain signers. The Executive Committee should also take action to adopt the Opportunities Credit Union *Resolution* as presented.

For more information contact:

Forest Cohen
fcohen@ccrpcvt.org

CORPORATE AUTHORIZATION RESOLUTION

By:

Referred to in this document as "Financial Institution"

Referred to in this document as "Corporation"

I, _____, certify that I am Secretary (clerk) of the above named corporation organized under the laws of _____, Federal Employer I.D. Number _____, engaged in business under the trade name of _____, and that the resolutions on this document are a correct copy of the resolutions adopted at a meeting of the Board of Directors of the Corporation duly and properly called and held on _____ (date). These resolutions appear in the minutes of this meeting and have not been rescinded or modified.

AGENTS Any Agent listed below, subject to any written limitations, is authorized to exercise the powers granted as indicated below:

| Name and Title or Position | Signature | Facsimile Signature (if used) |
|----------------------------|-----------|----------------------------------|
| A. _____ | X _____ | X _____ |
| B. _____ | X _____ | X _____ |
| C. _____ | X _____ | X _____ |
| D. _____ | X _____ | X _____ |
| E. _____ | X _____ | X _____ |
| F. _____ | X _____ | X _____ |

POWERS GRANTED (Attach one or more Agents to each power by placing the letter corresponding to their name in the area before each power. Following each power indicate the number of Agent signatures required to exercise the power.)

| Indicate A, B, C, D, E, and/or F | Description of Power | Indicate number of signatures required |
|-------------------------------------|--|---|
| _____ | (1) Exercise all of the powers listed in this resolution. | _____ |
| _____ | (2) Open any deposit or share account(s) in the name of the Corporation. | _____ |
| _____ | (3) Endorse checks and orders for the payment of money or otherwise withdraw or transfer funds on deposit with this Financial Institution. | _____ |
| _____ | (4) Borrow money on behalf and in the name of the Corporation, sign, execute and deliver promissory notes or other evidences of indebtedness. | _____ |
| _____ | (5) Endorse, assign, transfer, mortgage or pledge bills receivable, warehouse receipts, bills of lading, stocks, bonds, real estate or other property now owned or hereafter owned or acquired by the Corporation as security for sums borrowed, and to discount the same, unconditionally guarantee payment of all bills received, negotiated or discounted and to waive demand, presentment, protest, notice of protest and notice of non-payment. | _____ |
| _____ | (6) Enter into a written lease for the purpose of renting, maintaining, accessing and terminating a Safe Deposit Box in this Financial Institution. | _____ |
| _____ | (7) Other _____ | _____ |

LIMITATIONS ON POWERS The following are the Corporation's express limitations on the powers granted under this resolution.

RESOLUTIONS

The Corporation named on this resolution resolves that,

- (1) The Financial Institution is designated as a depository for the funds of the Corporation and to provide other financial accommodations indicated in this resolution.
- (2) This resolution shall continue to have effect until express written notice of its rescission or modification has been received and recorded by the Financial Institution. Any and all prior resolutions adopted by the Board of Directors of the Corporation and certified to the Financial Institution as governing the operation of this corporation's account(s), are in full force and effect, until the Financial Institution receives and acknowledges an express written notice of its revocation, modification or replacement. Any revocation, modification or replacement of a resolution must be accompanied by documentation, satisfactory to the Financial Institution, establishing the authority for the changes.
- (3) The signature of an Agent on this resolution is conclusive evidence of their authority to act on behalf of the Corporation. Any Agent, so long as they act in a representative capacity as an Agent of the Corporation, is authorized to make any and all other contracts, agreements, stipulations and orders which they may deem advisable for the effective exercise of the powers indicated on page one, from time to time with the Financial Institution, subject to any restrictions on this resolution or otherwise agreed to in writing.
- (4) All transactions, if any, with respect to any deposits, withdrawals, rediscounts and borrowings by or on behalf of the Corporation with the Financial Institution prior to the adoption of this resolution are hereby ratified, approved and confirmed.
- (5) The Corporation agrees to the terms and conditions of any account agreement, properly opened by any Agent of the Corporation. The Corporation authorizes the Financial Institution, at any time, to charge the Corporation for all checks, drafts, or other orders, for the payment of money, that are drawn on the Financial Institution, so long as they contain the required number of signatures for this purpose.
- (6) The Corporation acknowledges and agrees that the Financial Institution may furnish at its discretion automated access devices to Agents of the Corporation to facilitate those powers authorized by this resolution or other resolutions in effect at the time of issuance. The term "automated access device" includes, but is not limited to, credit cards, automated teller machines (ATM), and debit cards.
- (7) The Corporation acknowledges and agrees that the Financial Institution may rely on alternative signature and verification codes issued to or obtained from the Agent named on this resolution. The term "alternative signature and verification codes" includes, but is not limited to, facsimile signatures on file with the Financial Institution, personal identification numbers (PIN), and digital signatures. If a facsimile signature specimen has been provided on this resolution, (or that are filed separately by the Corporation with the Financial Institution from time to time) the Financial Institution is authorized to treat the facsimile signature as the signature of the Agent(s) regardless of by whom or by what means the facsimile signature may have been affixed so long as it resembles the facsimile signature specimen on file. The Corporation authorizes each Agent to have custody of the Corporation's private key used to create a digital signature and to request issuance of a certificate listing the corresponding public key. The Financial Institution shall have no responsibility or liability for unauthorized use of alternative signature and verification codes unless otherwise agreed in writing.

Pennsylvania. The designation of an Agent does not create a power of attorney; therefore, Agents are not subject to the provisions of 20 Pa.C.S.A. Section 5601 et seq. (Chapter 56; Decedents, Estates and Fiduciaries Code) unless the agency was created by a separate power of attorney. Any provision that assigns Financial Institution rights to act on behalf of any person or entity is not subject to the provisions of 20 Pa.C.S.A. Section 5601 et seq. (Chapter 56; Decedents, Estates and Fiduciaries Code).

EFFECT ON PREVIOUS RESOLUTIONS This resolution supersedes resolution dated _____. If not completed, all resolutions remain in effect.

CERTIFICATION OF AUTHORITY

I further certify that the Board of Directors of the Corporation has, and at the time of adoption of this resolution had, full power and lawful authority to adopt the resolutions on page 2 and to confer the powers granted above to the persons named who have full power and lawful authority to exercise the same. (Apply seal below where appropriate.)

☐ If checked, the Corporation is a non-profit corporation.

In Witness Whereof, I have subscribed my name to this document and affixed the seal of the Corporation on _____ (date).

Attest by One Other Officer

Secretary

FOR FINANCIAL INSTITUTION USE ONLY

Acknowledged and received on _____ (date) by _____ (initials) ☐ This resolution is superseded by resolution dated _____.

Comments:

MEMBER APPLICATION & AGREEMENT

MEMBER INFORMATION

Name: Chittenden County Regional Planning Commission
Date of Birth: _____ SSN/TIN: 03-6015624 Driver's Lic. #: _____
Mailing Address: 110 West Canal Street City: Winooski State: VT Zip: 05404
Physical Address: 110 West Canal Street City: Winooski State: VT Zip: 05404
Home/Cell Phone: 802-846-4490 Work Phone: _____
Mother's Maiden Name: _____ Source of Income: _____ Occupation: _____

JOINT OWNER INFORMATION

Name: Charles L Baker
Date of Birth: 11/22/1963 SSN/TIN: 112-60-6907 Driver's Lic. #: 22589075
Mailing Address: 68 Moss Glen Lane City: So Burlington State: VT Zip: 05403
Physical Address: 68 Moss Glen Lane City: So Burlington State: VT Zip: 05403
Home/Cell Phone: 802-497-0733 Work Phone: _____
Mother's Maiden Name: Lasselle Source of Income: CCRPC Occupation: Executive Director

OWNERSHIP OF ACCOUNT

SELECT ONE OWNERSHIP TYPE AND, IF APPLICABLE, INCLUDE A BENEFICIARY DESIGNATION. THE OWNERSHIP TYPE AND BENEFICIARY DESIGNATION SPECIFIED ON THIS DOCUMENT WILL REMAIN THE SAME FOR ALL ACCOUNTS LISTED BELOW.

1. ☐ INDIVIDUAL 2. ☐ JOINT WITH SURVIVORSHIP (and not as tenants in common)
3. ☐ MEMBER AS CUSTODIAN FOR MINOR UNDER THE VERMONT UNIFORM GIFTS TO MINORS ACT (UGMA)
4. ☐ TRUST - SEPARATE AGREEMENT DATED _____
5. ☐ SOLE PROPRIETOR
6. ☐ LLC
7. ☐ PARTNERSHIP
8. ☐ CORPORATION
9. ☐ NON-PROFIT
10. ☒ OTHER Municipality

BENEFICIARIES: ☐ REVOCABLE TRUST OR ☐ PAY-ON-DEATH DESIGNATION AS DEFINED IN THE ACCOUNT TERMS AND CONDITIONS. (Place name and address of beneficiaries below.)

ACCOUNT TYPE

- ☒ Municipal Savings 01
☒ Municipal Checking 12
☒ Municipal Money Mkt 09

Number of signatures required for withdrawal 1 ☐ This is a temporary account agreement.

SIGNATURES & CERTIFICATIONS

BACKUP WITHHOLDING CERTIFICATION - Check box (A) only if true or (B) below:

(A) ☒ By signing below, I (name) Chittenden County Regional Planning Committee certify under penalties of perjury that (1) the Taxpayer Identification Number (TIN) shown above is my correct TIN and I am not subject to backup withholding either because (a) I have not been notified by the Internal Revenue Service that I am subject to backup withholding as a result of a failure to report all interest or dividends or (b) the IRS has notified me that I am no longer subject to backup withholding and (2) I am a U.S. citizen or other U.S. person (defined in the instructions).

(B) ☐ A separate Certification has been completed.

By signing below, the undersigned agree to the Credit Union by-laws and the terms and conditions of any approved account, as amended from time to time, and authorize the Credit Union to verify credit and employment history by any necessary means, including preparation of a credit report by a credit reporting agency on the undersigned, as individuals. The undersigned certify that the information provided on this application is true and correct and that the terms apply to all listed accounts. The undersigned acknowledge receipt of a copy of the terms and conditions applicable to each listed account and the following policy disclosures:

☒ Funds Availability ☒ Truth-In-Savings ☒ Electronic Fund Transfers ☒ Privacy ☒ Terms & Conditions

☐

THE INTERNAL REVENUE SERVICE DOES NOT REQUIRE YOUR CONSENT TO ANY PROVISION OF THIS DOCUMENT OTHER THAN THE CERTIFICATIONS REQUIRED TO AVOID BACKUP WITHHOLDING.

(1) X _____ 38624
Member Signature Chittenden County Regional Planni (Date) _____ Member/Account #
(2) X _____
Signature Charles L Baker (Date) _____ Signer
Relationship to Member
(3) X _____
Signature Christopher A Shaw (Date) _____ Signer
Relationship to Member

AGENTS - THE INDIVIDUAL SIGNING ABOVE ON LINE _____ IS SIGNING AS

- ☐ Power of Attorney - agreement on file ☐ A Successor Custodian of a UGMA account ☐ Parent/Guardian
☐ Authorized Signer ☐ Joint Fiduciary ☐

CREDIT UNION USE ONLY

APPLICATION APPROVED (date) _____ BY _____ ELIGIBILITY ONE WIN OPPTS INC

MEMBER APPLICATION & AGREEMENT

MEMBER INFORMATION

Name: Chittenden County Regional Planning Commission
Date of Birth: _____ SSN/TIN: 03-6015624 Driver's Lic. #: _____
Mailing Address: 110 West Canal Street City: Winooski State: VT Zip: 05404
Physical Address: 110 West Canal Street City: Winooski State: VT Zip: 05404
Home/Cell Phone: 802-846-4490 Work Phone: _____
Mother's Maiden Name: _____ Source of Income: _____ Occupation: _____

JOINT OWNER INFORMATION

Name: Charles L Baker
Date of Birth: 11/22/1963 SSN/TIN: 112-60-6907 Driver's Lic. #: 22589075
Mailing Address: 68 Moss Glen Lane City: So Burlington State: VT Zip: 05403
Physical Address: 68 Moss Glen Lane City: So Burlington State: VT Zip: 05403
Home/Cell Phone: 802-497-0733 Work Phone: _____
Mother's Maiden Name: Lasselle Source of Income: CCRPC Occupation: Executive Director

OWNERSHIP OF ACCOUNT

SELECT ONE OWNERSHIP TYPE AND, IF APPLICABLE, INCLUDE A BENEFICIARY DESIGNATION. THE OWNERSHIP TYPE AND BENEFICIARY DESIGNATION SPECIFIED ON THIS DOCUMENT WILL REMAIN THE SAME FOR ALL ACCOUNTS LISTED BELOW.

1. ☐ INDIVIDUAL
2. ☐ JOINT WITH SURVIVORSHIP (and not as tenants in common)
3. ☐ MEMBER AS CUSTODIAN FOR MINOR UNDER THE VERMONT UNIFORM GIFTS TO MINORS ACT (UGMA)
4. ☐ TRUST - SEPARATE AGREEMENT DATED _____
5. ☐ SOLE PROPRIETOR
6. ☐ LLC
7. ☐ PARTNERSHIP
8. ☐ CORPORATION
9. ☐ NON-PROFIT
10. ☒ OTHER Municipality

BENEFICIARIES: ☐ REVOCABLE TRUST OR ☐ PAY-ON-DEATH DESIGNATION AS DEFINED IN THE ACCOUNT TERMS AND CONDITIONS. (Place name and address of beneficiaries below.)

ACCOUNT TYPE

- ☒ Municipal Savings 01
☒ Municipal Checking 12
☒ Municipal Money Mkt 09

Number of signatures required for withdrawal 1 ☐ This is a temporary account agreement.

SIGNATURES & CERTIFICATIONS

BACKUP WITHHOLDING CERTIFICATION - Check box (A) only if true or (B) below:

- (A) ☒ By signing below, I (name) Chittenden County Regional Planning Committee certify under penalties of perjury that (1) the Taxpayer Identification Number (TIN) shown above is my correct TIN and I am not subject to backup withholding either because (a) I have not been notified by the Internal Revenue Service that I am subject to backup withholding as a result of a failure to report all interest or dividends or (b) the IRS has notified me that I am no longer subject to backup withholding and (2) I am a U.S. citizen or other U.S. person (defined in the instructions).

(B) ☐ A separate Certification has been completed.

By signing below, the undersigned agree to the Credit Union by-laws and the terms and conditions of any approved account, as amended from time to time, and authorize the Credit Union to verify credit and employment history by any necessary means, including preparation of a credit report by a credit reporting agency on the undersigned, as individuals. The undersigned certify that the information provided on this application is true and correct and that the terms apply to all listed accounts. The undersigned acknowledge receipt of a copy of the terms and conditions applicable to each listed account and the following policy disclosures:

- ☒ Funds Availability ☒ Truth-In-Savings ☒ Electronic Fund Transfers ☒ Privacy ☒ Terms & Conditions

☐

THE INTERNAL REVENUE SERVICE DOES NOT REQUIRE YOUR CONSENT TO ANY PROVISION OF THIS DOCUMENT OTHER THAN THE CERTIFICATIONS REQUIRED TO AVOID BACKUP WITHHOLDING.

- (1) X _____ 38624
Member Signature Chittenden County Regional Planni (Date) _____ Member/Account #
(2) X _____
Signature John Zicconi (Date) _____ Signer
Relationship to Member
(3) X _____
Signature Catherine McMains (Date) _____ Signer
Relationship to Member

AGENTS - THE INDIVIDUAL SIGNING ABOVE ON LINE _____ IS SIGNING AS

- ☐ Power of Attorney - agreement on file ☐ A Successor Custodian of a UGMA account ☐ Parent/Guardian
☐ Authorized Signer ☐ Joint Fiduciary ☐

CREDIT UNION USE ONLY

APPLICATION APPROVED (date) _____ BY _____ ELIGIBILITY ONE WIN OPPS INC

July 8, 2021

Rachel Lomonaco
Act 250 Coordinator
111 West Street
Essex Junction, VT 05452

RE: 85 Meadowland Drive; South Burlington; Application #4C0473-7A

Dear Ms. Lomonaco:

The Chittenden County Regional Planning Commission's Staff and Executive Committee have reviewed this Act 250 application for a project described as the release of existing on-site mitigation area for primary agricultural soils at 85 Meadowland Drive in South Burlington, VT. Impacts to agricultural soils could instead be mitigated off-site. We understand that the District Commission intends to narrow the scope of the hearing to 9B (primary agricultural soils) unless the scope is expanded at the hearing.

This, in and of itself, will not require local Development Review Board approval and therefore has not been sought. However, the Planning Commission and City Council may have comments.

We offer the following comments:

The project is located within the Enterprise Planning Area as defined in the Chittenden County Regional Plan, entitled the *2018 Chittenden County ECOS Plan*. We find this project to be consistent with the Planning Area for the following reasons:

1. The Enterprise Planning Area is identified in the Plan as an area where local zoning authorizes a future concentration of employment uses that attract workers from the County and multi-county region. Development in these Planning Areas should have adequate wastewater capacity and access to transit or be near these services. Typically, this area encompasses major employers or a cluster of single employers and has current or planned transit service.
2. The Enterprise Planning Area is an area planned for growth, and therefore this project helps implement Strategy #2 of the Plan which calls for 80% of new development in the areas planned for growth.

Therefore, we find this project to generally be in conformance with the Planning Areas of the *2018 Chittenden County Regional Plan*, based on the limited information currently available.

Due to the detailed level of development review in most Chittenden County municipalities, and the environmental permit reviews at the Vermont Department of Environmental Conservation, CCRPC focuses its Act 250 reviews on the type of proposed land use and the Planning Areas section of the 2018 Chittenden County ECOS Plan. The CCRPC also focuses its review on transportation-related issues, where appropriate, in accordance with the Metropolitan Transportation Plan, which is within the 2018 Chittenden County ECOS Plan.

These comments are based on information currently available; we may have additional comments as the process continues. Please feel free to contact me should you have any questions.

Sincerely,

Charlie Baker
Executive Director

Cc: CCRPC Board
Certificate of Service

CERTIFICATE OF SERVICE

I hereby certify on this 8th day of July 2021, a copy of the foregoing letter concerning Act 250 Land Use Permit Application #4C0473-7A, was sent by U.S. mail, postage prepaid to the following individuals without email addresses and by email to the individuals with email addresses listed.

BPLP, LLC
85 Meadowland Drive
South Burlington, VT 05403
peter.pollak0704@gmail.com

Robert Rushford, Esq.
Jeffrey Polubinski, Esq.
Gravel and Shea
PO Box 369
Burlington, VT 05402
rrushford@gravelshea.com
jpolubinski@gravelshea.com

Donna Kinville, City Clerk
Chair, City Council/Chair, City
Planning Commission City of South
Burlington
575 Dorset Street
South Burlington, VT 05403
dkinville@sburfl.com

Elizabeth Lord, Land Use Attorney
Agency of Natural Resources
1 National Life Drive, Davis 2
Montpelier, VT 05602-3901
anr.act250@vermont.gov

Barry Murphy/Vt. Dept. of Public
Service
112 State Street, Drawer 20
Montpelier, VT 05620-2601
psd.vtdps@vermont.gov

Craig Keller/Jeff
Ramsey/Christopher Clow
VTrans Policy, Planning & Research
Bureau
Barre City Place
219 N. Main Street
Barre, VT 05641
aot.act250@vermont.gov

Vt. Agency of Agriculture, Food &
Markets
116 State Street, Drawer 20
Montpelier, VT 05620-2901
AGR.Act250@vermont.gov

Division for Historic Preservation
National Life Building, Drawer 20
Montpelier, VT 05620
accd.projectreview@vermont.gov

FOR YOUR INFORMATION

District #4 Environmental
Commission
Thomas Little, Chair
Parker Riehle/Kate Purcell
111 West Street
Essex Junction, VT 05452

Linda Bullard/Department of

Libraries
109 State Street
Montpelier, VT 05609-0601
linda.bullard@vermont.gov

NRCS, District Conservationist
Natural Resources Conservation
Service
68 Catamount Park, Ste. B
Middlebury, VT 05753
marybeth.whitten@vt.usda.gov

Winooski NRCD Office
617 Comstock Road, Suite 1
Berlin, VT 05602
info@winooskinrcd.org

Ethan Tapper, County Forester/FPR
John Gobeille & Toni Mikula/ANR -
Dept. of Fish & Wildlife
111 West Street
Essex Junction, VT 05452
ethan.tapper@vermont.gov ;
john.gobeille@vermont.gov
toni.mikula@vermont.gov

Seven Days/Classified Ad Section
255 South Champlain Street, PO
Box 1164
Burlington, VT 05402
classifieds@sevendaysvt.com

Green Mountain Power Corporation
c/o Kim Jones
163 Acorn Lane
Colchester, VT 05446
kim.jones@greenmountainpower.com

Vermont Gas Systems
PO Box 467
Burlington, VT 05402
efficiency@vermontgas.com

Efficiency Vermont
128 Lakeside Ave., Suite 401
Burlington, VT 05401
pics@veic.org

Michael Barsotti, Water Quality
Director
Champlain Water District
403 Queen City Park Road
South Burlington, VT 05403
mike.barsotti@champlainwater.org

Dated at Winooski, Vermont, this 7th day of July, 2021

- Easement Notes -

- E1.** City of South Burlington plans to widen Hinesburg Road R.O.W. by 7 feet on each side. The PROPOSED resulting line is depicted and labeled "E1" hereon.
- E1.1. - 1.2** A 20-foot-wide easement for future recreation path is PROPOSED serving the City of South Burlington, bound westerly by the PROPOSED widened street.
- E2.** 10-foot-wide easement for electric & communication lines conveyed to Green Mountain Power Corp. (GMP) and New England Telephone & Telegraph Co. (NETT) (Vol. 176 Pg. 138).
- E3.** 30-foot-wide easements for gas line serving Vermont Gas Systems, Inc. and for water line conveyed to City of South Burlington as depicted on Reference Plat E.
- E4.** 50-foot-wide easement for access, snow storage, electric & telephone line as depicted on Reference Plat C.
- E5.** 20-foot-wide sewer easement conveyed to City of South Burlington (Vol. 179 Pg. 510).
- E6.** 20-foot-wide power & communications easement serving Green Mountain Power Corp. and New England Telephone & Telegraph Co. (Vol. 275 Pg. 464).
- E7.** 10-foot-wide easement for gas serving Vermont Gas Systems, Inc. (Vol. 274 Pg. 587).
- E8.** 20-foot-wide waterline easement, 30-foot-wide sewer easement and 30-foot-wide combined water and sewer easements across Landrum to serve Dynapower building. (Vol. 278 Pg. 120)
- E9.** 20-foot-wide sewer easement running southerly and easterly from pump station, conveyed to City of South Burlington (Vol. 651 Pg. 140). Also sewer line easement (12 feet wide) conveyed to Summer Ice Joint Ventures by Burlington Properties LP (Vol. 651 Pg. 140), apparently for the same sewer line.
- E10.** 30-foot-wide water and sewer and access easement to pump station conveyed to City of South Burlington (Vol. 176 Pg. 516).
- E11.** 200' x 25' easement for electric & telephone conveyed by Burlington Properties Limited Partnership to Green Mountain Power Corp. and New England Telephone, dated 4/12/1989 (Vol. 281 Pg. 221-22).
- E12.** Sewer Pump Station (conveyed in fee) and 60' x 100' easement conveyed to City of South Burlington (Vol. 176 Pg. 516).
- E13.** Sewer line easement (20 feet wide) for possible future use, conveyed to City of South Burlington (Vol. 176 Pg. 518).
- E14.** 15-foot-wide pedestrian trail easement conveyed to City of South Burlington (Vol. 176 Pg. 514).
- E15.** A 20' x 42' sewer easement conveyed by Burlington Properties Limited Partnership to CEA Properties, LLC, dated 1/7/2008 (Vol. 804 Pg. 519-20).
- E16.** Agreement for utilization of signage between Burlington Properties LP and Lane Press, Inc. (Vol. 280 Pg. 398).
- E17.** 10-foot-wide easement for buried electric & telecom lines to serve Gm Mtn. Power Corp. and NET&T. (Vol. 572 Pg. 620).

- Highway or Street Notes -

H.1. Meadowland Drive (f/k/a Swift Street Extension) an 80-foot-wide right-of-way is subject to an Irrevocable Offer of Dedication from Burlington Properties Limited Partnership to the City of South Burlington, dated 9/12/1995 (Vol. 384 Pg. 104-108). This Irrevocable Offer of Dedication apparently supercedes a previous Irrevocable Offer of Dedication recorded (Vol. 176 Pg. 518). A third Irrevocable Offer of Dedication from Summer Ice Joint Venture to the City of South Burlington, dated 10/23/1996 was not recorded as of early March 2010.

H.2. Hinesburg Road (VT Rte. 116) is a public highway or street with a right-of-way width of 4 rods (66 feet).

H.3. Interstate Highway 89 is a public highway with a variable-width right-of-way. Reference Volume 48 Page 489, City Land Records, and Reference Plan I. No direct access to I-89 from subdivision.

H.4. Thompson and Bowdoin Streets are 60-foot-wide rights-of-way subject to Irrevocable Offers of Dedication from Burlington Properties L.P. to the City of South Burlington (Vol. 401 Pg. 350) and from Summer Ice Joint Venture to the City of South Burlington, dated 10/23/1996 (Unrecorded).

- Survey Notes -

1. Purpose of this survey and plat was to:

- Retrace, document, monument and perpetuate the perimeter boundaries of land conveyed to Burlington Properties Limited Partnership by deed of Orchard Lake Road Properties, dated 12/15/1998 and recorded in Volume 273 Page 265 of the South Burlington Land Records.
- Depict the proposed subdivision of the surveyed parcel into four (4) lots as shown.

Other neighboring property lines may be shown approximately and are for reference purposes only.

2. Field surveying was conducted during January 2010 and consisted of a closed-loop traverse utilizing electronic total-station and GPS instruments unless otherwise noted. Bearings shown are from Grid North, Vermont Coordinate System of 1983, based upon our GPS observations on or near the site.

3. Some dimensional information shown hereon may differ significantly from existing land records, plats or deeds, due to differences in orientation or methods of measurement.

4. Areas of proposed Lots 2 and 3 are calculated to the sidelines of Meadowland Drive, as shown.

- Zoning Data -

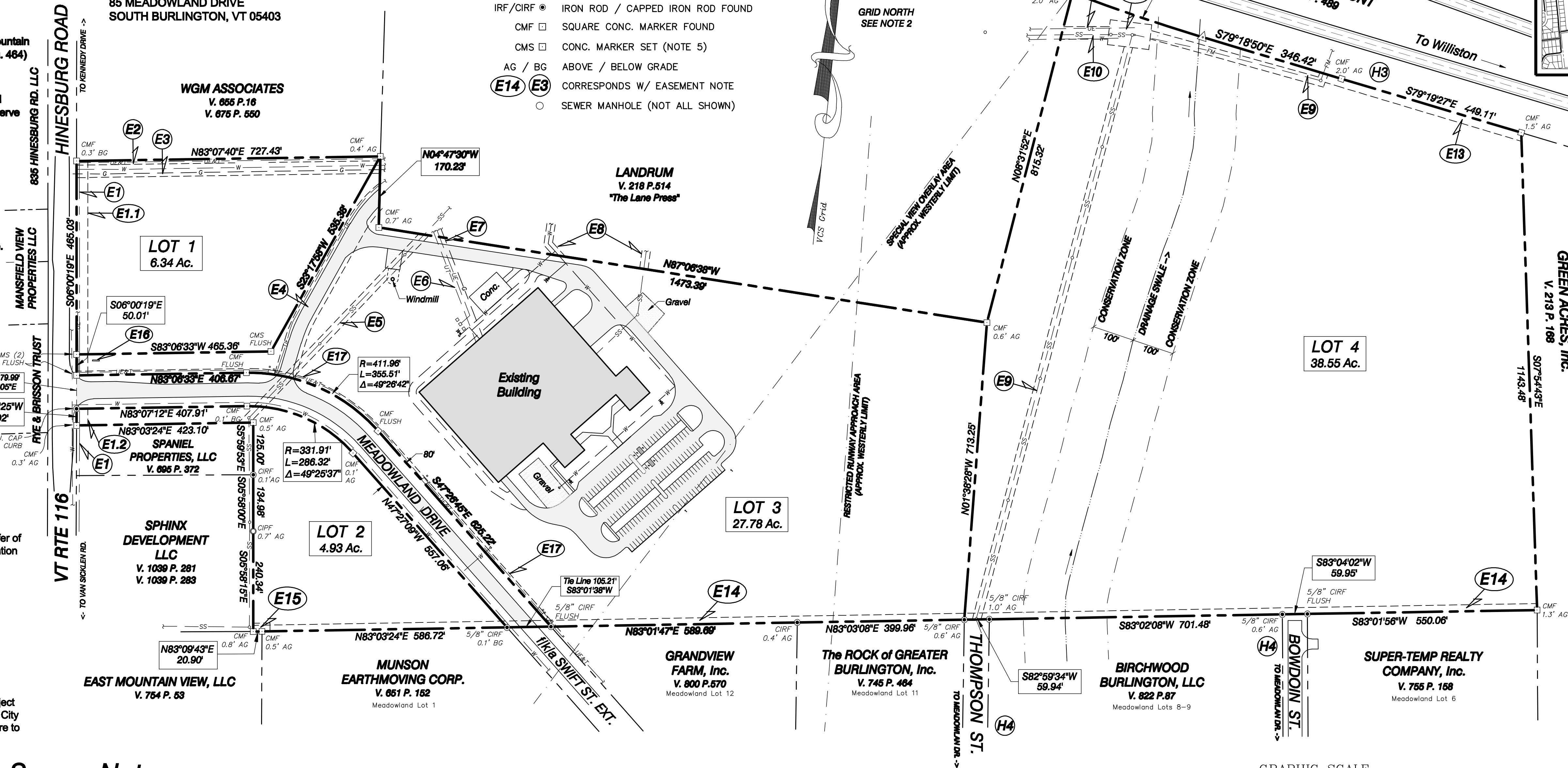
"INDUSTRIAL-OPEN SPACE" DISTRICT

| | |
|---------------------|-------|
| LOT AREA | 3 AC. |
| FRONT SETBACK | 50' |
| SIDE SETBACK | 35' |
| REAR SETBACK | 50' |
| BUILDING COVERAGE | 30% |
| LOT COVERAGE | 50% |
| FRONT YARD COVERAGE | 30% |

OWNER of RECORD:
BURLINGTON PROPERTIES LIMITED PARTNERSHIP
85 MEADOWLAND DRIVE
SOUTH BURLINGTON, VT 05403

- Legend -

| | |
|------------|------------------------------------|
| --- | SUBJECT PROPERTY LINE |
| - - - - - | OTHER (APPROX.) PROP. LINE |
| - - - - - | EASEMENT SIDELINE |
| SS | GRAVITY SEWER LINE |
| G | GAS LINE |
| W | WATER LINE |
| UE | UNDERGROUND ELECTRIC |
| UT | UNDERGROUND TELEPHONE |
| IPF/CIPF | IRON PIPE / CAPPED IRON PIPE FOUND |
| IRF/CIRF | IRON ROD / CAPPED IRON ROD FOUND |
| CMF | SQUARE CONC. MARKER FOUND |
| CMS | CONC. MARKER SET (NOTE 5) |
| AG / BG | ABOVE / BELOW GRADE |
| (E14) (E3) | CORRESPONDS W/ EASEMENT NOTE |
| ○ | SEWER MANHOLE (NOT ALL SHOWN) |



- Reference Plats or Maps -

A. "Consolidation of Lot 8 & 9 Meadowland Business Park for: Birchwood Burlington, LLC", last revised 9/18/2008, by Civil Engineering Associates, Inc. Recorded in Map Slide 534.3, South Burlington Land Records.

B. "Boundary Plat - Linus & Sue Wiles", dated March 11, 2003, by Trudell Consulting Engineers, Inc. Vol. 425 Pg. 3 South Burlington Land Records.

C. "Meadowland Business Park - Subdivision Plat", last revised 8/27/1996, by Trudell Consulting Engineers, Inc. Recorded in Map Slide 300.3, South Burlington Land Records.

D. "Landrum and Orchard Lake Road Properties", last revised 2/03/1988, by Trudell Consulting Engineers, Inc. Recorded in Map Slide 208.5, South Burlington Land Records.

E. "Plat of Land of Semicon Components, Inc.", last revised 8/29/1986, by Trudell Consulting Engineers, Inc. Recorded in Map Slide 193.1, South Burlington Land Records.

F. "Plat of Land of Mtel, Inc.", last revised 5/21/1984, by Trudell Consulting Engineers, Inc. Recorded in Map Slide 170.4, South Burlington Land Records.

G. "Mountain View Industrial Park", last revised 12/03/1981, by Trudell Consulting Engineers, Inc. Recorded in Map Slide 153.4, South Burlington Land Records.

H. "Property Survey - Wright Farm", dated February 7, 1979, by Engineers Incorporated of Vermont. Recorded in Map Slide 150.1, South Burlington Land Records.

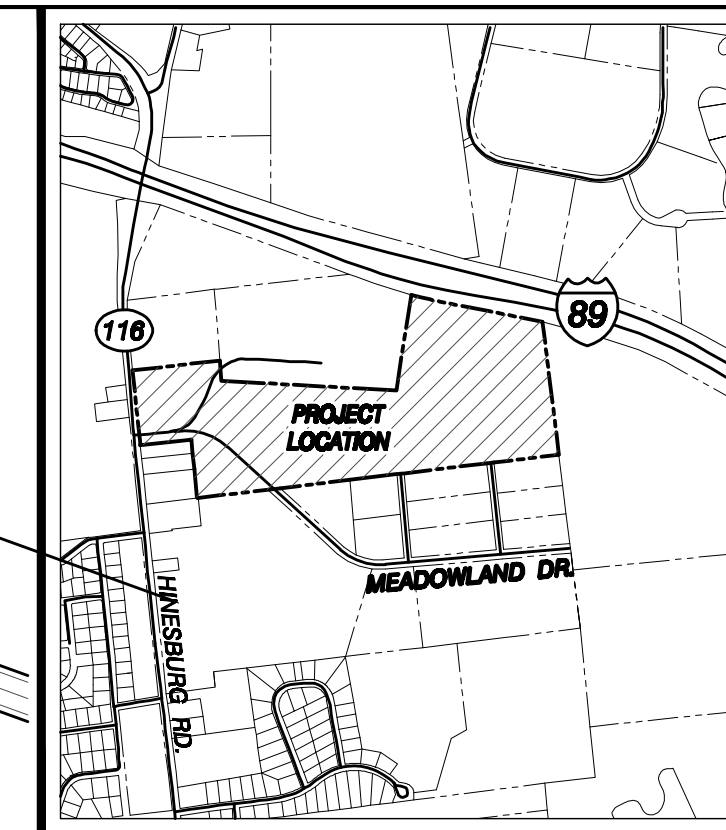
I. "Interstate Project in the Towns of Williston & South Burlington - Project I-89-3 (14)", Sheets 15-16 of 115, circa April 1981, by Boswell Engineering Co., VTrans District 5 Engineer's Office.

J. "Plat of Survey - Gamal Eltabbakh", last revised 9/28/2011 by Civil Engineering Associates, Inc. Recorded in Map Slide 580.3, South Burlington Land Records.

To the best of my knowledge & belief this plat properly depicts the results of a survey conducted under my direct supervision, based upon our analysis of record and physical evidence found. Existing boundaries shown are substantially consistent with the record unless otherwise shown. This plat is in substantial compliance with 27 VSA 1403. This statement valid only when accompanied by my original signature and seal.

Timothy R. Cowan

VT LS 597



LOCATION MAP

NOT TO SCALE

SURVEYED BY:



CIVIL ENGINEERING ASSOCIATES, INC.

10 MANSFIELD VIEW LANE
SOUTH BURLINGTON, VT 05403
PHONE 802-864-2323 FAX 802-864-2271

COPYRIGHT © 2012 - ALL RIGHTS RESERVED

DRAWN

CHK'D

APPROVED

TRC

| DATE | CHK'D | REVISION |
|----------|-------|----------------------------|
| 06.29.12 | TRC | REV. FOR ACT 250 SUBMITTAL |
| 09.15.10 | TRC | REC. EASE. ON RTE. 116 |
| 04.06.10 | TRC | ADD EASEMENT DATA |

**PROPOSED
4-LOT SUBDIVISION**

**BURLINGTON
PROPERTIES
LIMITED
PARTNERSHIP**

**85 MEADOWLAND DRIVE
SOUTH BURLINGTON, VERMONT**

DATE
MAR. 10, 2010

ORIGINAL SCALE
1" = 150'

PROJ. NO.
09202

DRAWING NUMBER

P1

July 8, 2021

Nils Behn
Aegis Renewable Energy, Inc.
340 Mad River Park
Waitsfield, VT 05473
nbehn@aegis-re.com

RE: Advance Notice of Petition for SL Maple Solar I, LLC's 150 kW Project in Charlotte, VT – Carpenter Road (Case # 21-2094-AN)

Dear Mr. Behn:

Chittenden County Regional Planning Commission (CCRPC) has received the 45-day notice of a Section 248 Petition to be filed with the Vermont Public Utility Commission for a 150 kW solar project on Carpenter Road in Charlotte, VT. CCRPC has reviewed this project's conformance with CCRPC's *2018 Chittenden County ECOS Plan*, which gained a Determination of Energy Compliance from the Vermont Department of Public Service on August 9, 2018.

ECOS Energy Goal

CCRPC finds that this project meets the intent of the Energy Goal (Goal #17) of the *2018 ECOS Plan*: "Move Chittenden County's energy system toward a cleaner, more efficient and renewable system that benefits health, economic development, and the local/global climate by working towards the State's Comprehensive Energy Plan goals."

Strategy 2, Action 4b of the ECOS Plan states "CCRPC supports the generation of new renewable energy in the County to meet the Vermont Comprehensive Energy Plan's goals of using 90% renewable energy by 2050, in a manner that is cost effective and respects the natural environment." Development of the proposed solar facility would implement this action.

The Plan's suitability policies help determine whether projects are cost effective and the Plan's constraint policies help determine whether projects respect the natural environment:

Suitability Policies

The *2018 ECOS Plan* recommends the location of renewable energy generation facilities in appropriate locations, as defined by the policies in Strategy 2, Action 4b. Inability to meet these guidelines does not necessarily preclude the ability to develop renewable energy generation development. The project as proposed meets two of the suitability policies:

- The project is located proximate to existing distribution infrastructure with adequate capacity and near areas with high electric load.
- The project is outside of any state designated centers or historic districts.

Constraints Policies

The 2018 ECOS Plan states that development should be located to avoid state and local known constraints that have been field verified, and to minimize impacts to state and local possible constraints that have been field verified (Strategy 3, Action 1.f and Strategy 4, Action 1.f and Action 2.e). We've identified a number of constraints in our review and are therefore asking for further information before determining whether this project as proposed is in conformance with the Regional Plan.

Our review indicates that the following state known constraints may be impacted by the project:

- Class 1 and 2 wetlands: The proposed facility is located on a lot that contains a Class 2 wetland per the Vermont State Wetlands Inventory. CCRPC requests that the full petition confirm that no new infrastructure will be located within a wetland; unless approval is received from the Vermont Agency of Natural Resources.

Our review indicates that the following state possible constraints may be impacted by the project:

- Agricultural Soils and Hydric Soils: The proposed facility is located on an area composed of prime and statewide agricultural soils. CCRPC requests that impacts to these soils be minimized in accordance with the recommendations of the Vermont Agency of Agriculture.
- Protected Lands: The proposed facility is located on land that appears to be subject to a Vermont Land Trust easement. CCRPC requests that the applicant confirm the existence of this easement in the full petition and explain if this easement restricts solar development on the site.

Our review indicates that the following local possible constraints may be impacted by the project:

- Slopes Greater Than 15%: Part of the proposed parcel contains slopes greater than 15% grade. Please confirm the proposed facility is not located in this area.
- Land in Active Agriculture: The parcel is actively being farmed. Development of the parcel to a solar facility would likely remove the parcel from agricultural production. Please provide more information about how impacts to this constraint may be mitigated in the full petition.
- Water Supply Protection: The proposed facility is located in a water supply protection area. Please provide more information about how impacts to this constraint may be mitigated in the full petition.

These comments are based on information currently available; CCRPC will review the full petition before making a final decision regarding the project's conformance with the ECOS Plan and both the suitability and constraints policies.

Please feel free to contact me with any questions.

Sincerely,

Charlie Baker
Executive Director

cc: CCRPC Board

Dean Bloch, Town Administrator, Town of Charlotte

Attachment A - Conceptual Site Plan

ELECTRICAL EQUIPMENT INFORMATION

ZNSHINE ZONE-NH144-420
QTY. 508 4 420

ELECTRICAL CHARACTERISTICS (5TC)

- MAX. POWER CURRENT (IMP): 10.24A
- MAX. POWER VOLTAGE (VMP): 43.0V
- SHORT CIRCUIT CURRENT (ISC): 10.66A
- OPEN CIRCUIT VOLTAGE (VOC): 51.4V
- SIZE: 2094 mm X 1036 mm X 35mm
- WEIGHT: 24 KG.

INPUT (DC)

- MAX. DC POWER: 22.5KW
- MAX. INPUT VOLTAGE: 1000 VDC
- NOMINAL INPUT VOLTAGE: 440 VDC
- MAX. INPUT CURRENT: 51 ADC

OUTPUT (AC)

- RATED AC POWER: OUTPUT: 15,000 W
- MAX. AC POWER: 15,000 VA
- MAX. OUTPUT CURRENT: 62.5 A

PARCEL LINES SHOWN ARE APPROXIMATE. SOURCE: VERMONT ANR & FIELD OBSERVATIONS. EXACT PARCEL BOUNDARIES TO BE CONFIRMED PRIOR TO CPG APPLICATION.

PV ARRAY AREA:
APPROX. 0.65 AC
508 MODULES
223.52KW DC

UNDERGROUND POWER TO POI
EXACT LOCATION TBD

419

DISTANCE TO ABUTTING
RESIDENCE

INVERTER, MDP, DAS, METER

PROPOSED TREE CUT: 3-5 TREES

APPROXIMATE LOCATION
OF SLURRY PIT

 $168' \pm$

Carpenter Rd

© 2021 Google

SITE PLAN

$$1'' = 30'$$


REVISIONS

| NO. | DESCRIPTION | DATE | BY |
|-----|-----------------------|---------|----|
| 1. | SETBACK MODIFIED | 4-7-21 | DM |
| 2. | ARRAY LAYOUT MODIFIED | 4-14-21 | DM |
| 3. | NEW BASE IMAGE USED | 6-10-21 | DM |

152 OF THESE OF AMERICA

IN THESE DRAWINGS, THESE DRAWINGS ARE INTENDED FOR THE OWNER'S PLANNING, CONSTRUCTION AND OTHER PURPOSES FOR THE PROJECT AND ARE NOT TO BE USED FOR ANY OTHER PURPOSE. THE OWNER HAS ADVISED HIS CONSTRUCTION DRAWINGS HAVE BEEN MADE AS SUCH AND ARE APPROVED BY A REGISTERED ARCHITECT.

BY USE OF THESE DRAWINGS IN ANY OTHER MANNER THAN AS INTENDED HEREIN, THE USER OF THESE DRAWINGS, THE USER, REPRESENTS THAT THEY HAVE PURPOSE, INTENTIVE, AND HAVE USED THE DRAWINGS, OBTAINED ALL NECESSARY PERMITS, AND HAVE MET ALL APPLICABLE PARAS AND ORDINANCES, INCLUDING, BUT NOT LIMITED TO, CONTRACT DOCUMENTS, SPECIFICATIONS, PERMITS, CONTRACTS, AND ORDINANCES, REGARDING THE PERMANENT LAND, FILLAGE AND FILLING, UNITS, AND OTHER PERTINENT PERMITS FOR CONSTRUCTION.

3. AEGIS AND THEIR ENGINEER ARE RESPONSIBLE FOR FINAL DESIGN AND LOCATION OF BUILDING'S "FOOTPRINT" INCLUDING, AMAZIA LITERATURE THE 151 FEET AREA AND BUILDING AND COORDINATING FINAL UTILITY COLLECTIONS SHOWN ON THESE PLANS.

4. PRIOR TO USING THESE PLANS FOR CONSTRUCTION PURPOSES, THE USER SHALL CONSULT A REGISTERED PROFESSIONAL ENGINEER TO ENSURE THE PLAN CONTAINS THE NECESSARY CURRENT REVISIONS.

5. THESE DRAWINGS ARE SPECIFIC TO THE PROJECT AND ARE NOT

6. IT IS THE USER'S RESPONSIBILITY TO DISCLOSE THIS COPY COPIES TO THE AGENT OFFICE RELEVANT. IF LOST, PLEASE CONTACT AGENT IMMEDIATELY.

PROJECT TITLE AND DETAILS

CONCEPTUAL SITE PLAN

PROJECT TITLE AND DETAILS

DONEGAN PV ARRAY
CARPENTER RD
CHARLOTTE VT
223,520 W DC
150,000 W AC

අනෙක් තිලක

SITE PLAN

DATE: 03/30/2011

SCALE: 1"=50'

PROJECT NUMBER:

DRAWN BY:

PROJECT ENGINEER:

APPROVED BY:

FILE LOCATION:

C2-01



Natural Resources Atlas
Vermont Agency of Natural Resources

vermont.gov



1: 2,435
June 9, 2021

LEGEND

Rare Threatened Endangered

Threatened or Endangered

Rare

Deer Wintering Areas

Wetland - VSWI

Class 1 Wetland

Class 2 Wetland

Buffer

Parcels (standardized)

Roads

Interstate

US Highway, 1

State Highway

Town Highway (Class 1)

Town Highway (Class 2,3)

Town Highway (Class 4)

State Forest Trail

National Forest Trail

Legal Trail

Private Road/Driveway

Proposed Roads

Stream/RiverStreamIntermittent StreamTown Boundary

NOTES

Map created using ANR's Natural Resources Atlas

124.0

WGS_1984_Web_Mercator_Auxiliary_Sphere

© Vermont Agency of Natural Resources

0

62.00

124.0 Meters

1" =

203

Ft.

1cm =

24

Meters

THIS MAP IS NOT TO BE USED FOR NAVIGATION

DISCLAIMER: This map is for general reference only. Data layers that appear on this map may or may not be accurate, current, or otherwise reliable. ANR and the State of Vermont make no representations of any kind, including but not limited to, the warranties of merchantability, or fitness for a particular use, nor are any such warranties to be implied with respect to the data on this map.

July 8, 2021

Encore Renewable Energy
c/o Phillip D. Foy
220 Main Street
Second Floor, Suite 2C
Burlington, VT 05401

Re: UVM Solar Research and Test Facility – 45-day Notice of Application (#21-2171-AN)

Dear Mr. Foy,

The Chittenden County Regional Planning Commission (“CCRPC”) is in receipt of the 45-day notice of application submitted by UVM Solar Research and Test Facility for the construction of a 50 kW solar array to be located on Intervale Road in Burlington, VT. The subject parcel is owned by the City of Burlington. CCRPC has reviewed this project’s conformance with CCRPC’s 2018 Chittenden County ECOS Plan, which gained a Determination of Energy Compliance from the Vermont Department of Public Service on August 9, 2018.

ECOS Energy Goal

CCRPC finds that this project meets the intent of the Energy Goal (Goal #17) of the *2018 ECOS Plan*: “Move Chittenden County’s energy system toward a cleaner, more efficient and renewable system that benefits health, economic development, and the local/global climate by working towards the State’s Comprehensive Energy Plan goals.”

Strategy 2, Action 4b of the ECOS Plan states “CCRPC supports the generation of new renewable energy in the County to meet the Vermont Comprehensive Energy Plan’s goals of using 90% renewable energy by 2050, in a manner that is cost effective and respects the natural environment.” Development of this solar facility helps implement this action.

The Plan’s suitability policies help determine whether projects are cost effective, and the Plan’s constraint policies help determine whether projects respect the natural environment:

Suitability Policies

The *2018 ECOS Plan* recommends the location of renewable energy generation facilities in appropriate locations, as defined by the policies in Strategy 2, Action 4b. The project as proposed meets the following suitability policies:

1. Locate energy generation proximate to existing distribution and transmission infrastructure: The proposed facility is located adjacent to existing distribution infrastructure.
2. Locate solar generation on previously impacted area: The proposed facility is located on an area used for wood scrap collection.
3. Locate ground-mounted solar larger than 15 kW...outside of state designated village centers: The project is not located within a designated village center.

CCRPC finds that the location of this project meets the suitability policies of the 2018 ECOS Plan.

Constraints Policies

The *2018 ECOS Plan* states that development should be located to avoid state and local known constraints that have been field verified, and to minimize impacts to state and local possible constraints that have been field verified (Strategy 3, Action 1.f and Strategy 4, Action 1.f and Action 2.e). Our review indicates that three State known constraints may be impacted by the project:

- River Corridors: Part of the proposed facility is possibly located within a River Corridor along the Winooski River. CCRPC requests that the full petition confirm that no new infrastructure will be located within the River Corridor; unless approval is received from the Vermont Agency of Natural Resources.
- Rare, threatened and endangered species: Information from the Agency Natural Resources indicates the possible location of existence of a rare, threatened, or endangered species in the vicinity of the proposed project. CCRPC requests that the petitioner identify the existence, or not, of rare, threatened, or endangered species in the full petition. If this constraint exists on site, the full petition should confirm that no new infrastructure will impact this constraint; unless approval is received from the Vermont Agency of Natural Resources.
- Class 1 and Class 2 Wetlands – The proposed facility is located on a lot that may contain Class 2 wetlands. CCRPC requests that the full petition confirm that no new infrastructure will be located within a wetland; unless approval is received from the Vermont Agency of Natural Resources.

Our review indicates that two State possible constraints may be impacted by the project:

- Flood Hazard Area – The proposed project is located within the Flood Hazard Area. CCRPC requests that impacts to the Flood Hazard Area be minimized in accordance with the recommendations of the Vermont Agency of Natural Resources.
- Agricultural Soils – The proposed project appears to be located on prime agricultural soils and statewide important agricultural soils. CCRPC requests that impacts to the prime agricultural soils and statewide important agricultural soils be minimized in accordance with the recommendations of the Vermont Agency of Natural Resources.

Further, one local possible constraint may be impacted by the project:

- Mixed Use, Institutional, Core Campus, and Enterprise Zoning Districts - The proposed project is located within the Enterprise Zoning District. Based on conversations with City of Burlington Planning Staff, this constraint is likely not an impediment to developing a facility on-site.

These comments are based on information currently available; we may have additional comments as the process continues. We understand that the project may change between the submittal of the advance notice and the final petition. CCRPC will review the project location again with each new submittal to confirm our findings.

Please feel free to contact me with any questions.

Sincerely,

Charlie Baker
Executive Director

CC: CCRPC Board
Scott Gustin, Principal Planner for Development Review, City of Burlington



encore
RENEWABLE ENERGY
110 Main Street, Suite 202
Burlington, VT 05401
802.255.1200
www.encore-renewableenergy.com

PROFESSIONAL SEAL
PROJECT NO. 100-000000
BY PROFESSIONAL ENGINEER

UVM Solar Research Facility Concept Plan

| | | | |
|-----------------------|----------------|----------------|----------------|
| Type | FT | Fixed Area | 1/3 acre |
| Spacing | 14.3' | TR | 25° |
| Module Rating / Count | 180 Modules | AC Rating | 43.4 kW |
| DC Rating | 60.7 kW | DC Rating | 43.4 kW |
| Interconnection | Line Extension | Line Extension | Line Extension |

| DATE | DESCRIPTION |
|----------|-------------|
| 1/1/2021 | 1/1/2021 |

| | |
|---------------------|-------------|
| PROJECT INFORMATION | |
| TITLE & ADDRESS | |
| 111 Intervale Rd | |
| Burlington VT 05401 | |
| DRIVEN BY | REVIEWED BY |
| BY PROJECT NO. | DATE |
| Concept | |
| SHEET NO. | |
| P-102 | |

1 2 3 4 5 6 7 8 9 10 11

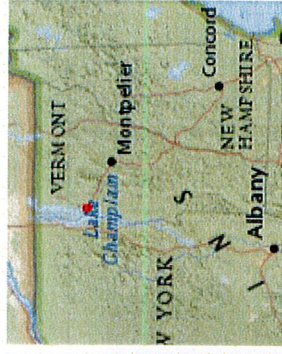
1 2 3 4 5 6 7 8 9 10 11



Preliminary Natural Resources Map

UVM Solar Research and Test Site Solar Project

vermont.gov



1: 5,775
May 12, 2021

LEGEND

Deer Wintering Areas

Vernal Pools Confirmed - AEA

Wetland - VSWI

Class 1 Wetland

Class 2 Wetland

Buffer

Flood Hazard Areas (Only FEN)

AE (1-percent annual chance flood)

A (1-percent annual chance flood)

AO (1-percent annual chance zone feet)

0.2-percent annual chance flood ha

Parcels (standardized)

Stream/River

Stream

Intermittent Stream

NOTES

Map created using ANR's Natural Resources Atlas:
Preliminary Natural Resources Map

293.0 0 146.00 293.0 Meters

1" = 481 Ft. 1cm = 58 Meters

THIS MAP IS NOT TO BE USED FOR NAVIGATION

DISCLAIMER: This map is for general reference only. Data layers that appear on this map may or may not be accurate, current, or otherwise reliable. ANR and the State of Vermont make no representations of any kind, including but not limited to, the warranties of merchantability, or fitness for a particular use, nor are any such warranties to be implied with respect to the data on this map.

WGSS_1984_Web_Mercator_Auxiliary_Sphere

© Vermont Agency of Natural Resources

DRAFT – Policy Participation Topics for CCRPC Board – July 2021

This list has been updated and will be discussed at the July Board meeting to prepare for 2022 Legislative session.

| | Topic – click on links for more detailed info in this document | ECOS Plan Strategy | ECOS Plan Top 10 Action | Included in FY21 UPWP? | CCRPC Committee | Staff Recommendation |
|----|--|---------------------------|--------------------------------|-------------------------------|------------------------|--|
| 1. | Clean Water (2019 Act 76) | #3 – water quality | #5 – water quality | Yes | CWAC | Yes, Staff is preparing to work on ‘start-up’ preparations for the Clean Water Service Provider (CWSP) in FY22. |
| 2. | Transportation Bill, VTrans’ Project Selection & Prioritization Processes (VPSP2), and the Transportation Climate Initiative | #2 – smart growth | #2 - transportation | Yes | TAC | Yes, Staff will monitor this year’s Transportation bill (as always). CCRPC will continue participating in VTrans’ VPSP2 process and provide updates to the TAC and Board, as necessary. CCRPC will continue to monitor the Transportation Climate Initiative effort. |
| 3. | Act 250 Reform & Housing | #2 – smart growth | #1 – land use/smart growth | Yes | ad hoc Act 250, PAC | Yes, CCRPC Staff recommends that we continue with this work. |
| 4. | Broadband Deployment throughout Vermont | #1 – economic development | Not specifically included | No | PAC | Yes, Staff recommends that we assist in ensuring broadband expansion in the region. |
| 5. | Energy Planning and Climate Change – Global Warming Solutions | #2 – smart growth | #4 – energy planning | No | Executive | Yes, Staff recommends that CCRPC monitor the Comprehensive Energy Plan update, Climate Council’s work and PUC investigations and rulemaking. |
| 6. | Cannabis taxation and regulation (Act 164 of 2020) | | | No | PAC | CCRPC will be working with the Planning Advisory Committee on the relevant rule making and municipal zoning as more details are worked out. |
| 7. | Project Specific TIF | #2 – smart growth | #1 – land use/smart growth | Yes | PAC | Yes, Staff recommends that CCRPC monitor and support this bill if it gets re-introduced. |
| 8. | Equity Related Bills | #8 - equity | Not specifically included | Yes | Executive Committee | Yes, Staff recommends that equity be a major focus area, and lens through which we do all of our work. |

| | | | | | | |
|-----|---|--|---------------------------|-----|--|---|
| 9. | Increased Municipal Self-governance | #7 – government efficiency & finance | Not specifically included | No | | CCRPC staff suggests that we review these proposals when requested by our municipalities. |
| 10. | Regional Dispatch Start-up Funding | #5 – health & safety; and #7 – government efficiency & finance | #6 – emergency management | Yes | | Staff recommends that CCRPC look for opportunities for support. |
| 11. | State Budget Bill & American Rescue Plan Act (ARPA) | No | No | No | | Staff recommends that CCRPC assist with the COVID pandemic recovery effort as requested/needed. |

1. Clean Water (2019 Act 76)

Act 76, the 2019 Clean Water Bill that was the brainchild of the Agency of Natural Resources (ANR), establishes a new structure for improving water quality throughout Vermont. It should also better achieve the clean water goals established in total maximum daily load (TMDL) plans that have been approved by the federal Environmental Protection Agency. The concept is to devolve responsibility for administering non-regulatory clean water programs to entities other than ANR, which is not well suited to implementing them. CCRPC will be the Clean Water Service Provider for the Direct to Lake Basin. The rulemaking process wrapped up on July 1, 2021 and CCRPC is working on 'start-up' preparations for the Clean Water Service Provider in FY22.

Staff Recommendation to the CCRPC Board: CCRPC Staff will move forward on preparations for the CWSP.

2. Transportation Bill, VTrans' Project Selection & Prioritization Processes – VPSP2, Transportation Climate Initiative

VPSP2 - VTrans continues the process of updating its project selection and prioritization processes. They are seeking to improve the performance-based and data driven project selection and prioritization framework. The new process has been tested this spring (2021) for Paving, Roadway, and Traffic & Safety projects. Next year, the VPSP2 will be used for Bridge projects. VTrans been seeking RPC input throughout the process and Christine has been serving on the VPSP2 Core Group.

The [Transportation and Climate Initiative Program](#) (TCI-P) is a regional collaboration of 12 Northeast and Mid-Atlantic states and the District of Columbia that seeks to improve transportation, develop the clean energy economy and reduce carbon emissions from the transportation sector. The participating states are: Connecticut, Delaware, Maine, Maryland, Massachusetts, New Hampshire, New Jersey, New York, Pennsylvania, Rhode Island, Vermont, and Virginia. Recognizing that more than one third of all carbon emissions come from the transportation sector, participating states started taking action through working groups focused on regional priorities, such as [clean vehicles and fuels](#). Several TCI states, in conjunction with the other participating states, published the following documents on June 10, 2021: TCI-P Model Rule, Draft Framework for Public Engagement, DRAFT TCI-P

Model Implementation Plan, and Draft Proposed Strategies for Regional Collaboration. In Vermont, ANR and VTrans are working together on this initiative.

Staff Recommendation to the CCRPC Board: Continue to monitor the state Transportation bill (as we do every year), continue to participate in VTrans' VPSP2 process and provide updates to the TAC and Board, as necessary. CCRPC will continue to monitor the Transportation Climate Initiative as it directly ties into our transportation and energy work.

3. Act 250 Reform and Housing

"Following the veto of last year's reform proposal [H.926], new proposals to update Vermont's statewide development review were introduced again this year (H.120, S.112 and H.400). Although some testimony was taken, no reform bill was voted out of committee. Stakeholders expect renewed efforts again next year." Source: [DHCD's 2021 Legislative Revisions Memo](#).

Pending S.79 - Rental Housing Registry, Inspection & Investment. From [DHCD's 2021 Legislative Revisions Memo](#) "Registry & Inspection S.79 passed during the veto session and is pending consideration by the Governor. If signed into law, the bill would establish a statewide rental housing registry under the authority of the DHCD, and an inspection system for rental housing, including short-term rentals, under the authority of the Division of Public Safety, registrations would be filed annually in March." The bill also establishes a rental improvement program and a no-interest loan program up to \$50,000 to first-time homebuyers with incomes less than 120% of area median income. DHCD's report states that the first time homebuyer program's outreach "would focus communication to prospective beneficiaries that have been historically and systemically discriminated against in the housing market."

Staff Recommendation to the CCRPC Board: CCRPC has been working with our municipalities and regional partners on the Act 250 reform effort for the past four years. CCRPC Staff recommends that we continue in this work in line with ECOS Plan Strategy #2; and Top 10 Action #1. CCRPC Staff also recommend that we assist with implementation of S.79 if it becomes law as requested.

4. Broadband Deployment throughout Vermont

Act 71 (H.360) - An act relating to accelerated community broadband deployment passed in 2021. The budget allocates \$250M in ARPA funds to broadband development and this act establishes the Vermont Community Broadband Fund to support policies and programs designed to accelerate community efforts that advance the State's goal of achieving universal access to reliable, high-quality, affordable, fixed broadband and to establish the Vermont Community Broadband Board to coordinate, facilitate, support, and accelerate the development and implementation of universal community broadband solutions. Act 71 identifies Communication Union Districts and small service providers (those providing service in 5 counties or less) as entities eligible for these funds. CCRPC will be working with municipalities on the best approach for serving the County's approximately 2,000 underserved homes. under review in December 2020. CCRPC will refer to [Covid-19 Response Telecommunications Recovery Plan](#) for implementation recommendations; and CCRPC will assist in ensuring broadband expansion in the region.

Staff Recommendation to the CCRPC Board: CCRPC will assist in ensuring broadband expansion in the region.

5. Energy Planning and Climate Council – Global Warming Solutions Act

CCRPC provided comments on VELCO's draft Long Range Transmission Plan in June 2021 as there are limitations in our transmission system that will impede the ability to achieve the state's energy goals. The Department of Public Service is also updating the Comprehensive Energy Plan, with an expected completion date of January 2022. CCRPC has been and will continue to participate in this Plan update. Ultimately, information from these plans will be incorporated into the ECOS Plan update.

H.688 of 2020 (Act 153), known as the Vermont Global Warming Solutions Act of 2020, created a council charged with developing a plan to meet the following milestones: reduce greenhouse gas pollution to 26% below 2005 levels by 2025, to 40% below 1990 levels by 2030, and 80% below by 2050. The [Climate Council](#) is underway and is working on a Plan to meet the Act's goals by December 2021.

CCRPC will also monitor and participate in Public Utility Commission investigations as they impact implementation of our regional and local energy plans, such as net metering rules (PUC Case 19-0855-RULE) and caps on renewable energy generation.

Staff Recommendation to the CCRPC Board: Staff recommends that CCRPC continue to participate and comment on the Comprehensive Energy Plan update, monitor the Climate Council's work, and monitor PUC investigations and rulemaking as appropriate.

6. Cannabis taxation and regulation ([Act 164 of 2020](#))

[S.54 \(Act 164 of 2020\)](#) – Cannabis Tax and Regulate – became law on October 7th, and will become fully effective in 2022. The new tax and regulatory system is still a work in progress, with responsibility for some details left to the new Cannabis Control Board, which will be formed in 2021. Here are some key points:

- Local municipalities (via voter approval) may opt in to allow retail sales in their community. A proposed bill in the 2021 legislative session would have changed this but it did not pass.
- Municipalities cannot issue blanket prohibitions of cannabis establishments (cultivation, testing, warehousing, and distribution) via ordinance or zoning, but can regulate via zoning and local licensing boards.
- CCRPC will assist municipalities with zoning issues upon request.

Staff Recommendation to the CCRPC Board: CCRPC will be working with the Planning Advisory Committee on the relevant components of this bill as more details are worked out.

7. Project Specific TIF

This was introduced as House bill 642 in 2020 – it proposed allowing a municipality to use tax increment financing to develop a project. The intention is to simplify the process and program for small infrastructure projects in rural communities like municipal wastewater. It was introduced in January 2020, but didn't move. There was more movement on this in the 2021 legislative session but ultimately did not pass.

Staff Recommendation to the CCRPC Board: Staff recommends that CCRPC monitor and support this bill if it gets re-introduced.

8. Equity Related Bills

We anticipate bills emerging in the 2022 session. This issue has been one of our ECOS Plan Strategies since 2013. Addressing systemic racism will take a concerted effort by everyone. CCRPC has hired and has begun working with Creative Discourse, a racial equity partner, to deepen our understanding, help our municipalities, and help us create meaningful change. We anticipate that we'll be updating our equity impact assessment tool.

Staff Recommendation to the CCRPC Board: Staff recommends that equity be a major focus area, and lens through which we do all of our work. We will monitor any bills that are relevant to our work.

9. Increased Municipal Self-governance

This bill, Senate bill 106, was first introduced in 2020 and discussed again in 2021. It would support decision making at the government level closest to the people, recognizing the capacity of local officials to govern themselves. Also, in 2021 Williston and Winooski had proposals forwarded as bills to the legislature, where any charter change approved for another municipality may be adopted by 19 majority vote of the town voters without the need to return to the General Assembly for approval. Karen Horn, VLCT, discussed these proposals with the CCRPC Board in January 2021. This will be an ongoing issue and challenge. CCRPC staff suggests that we review these proposals when requested by our municipalities.

Staff Recommendation to the CCRPC Board: CCRPC staff suggests that we review these proposals when requested by our municipalities.

10. Regional Dispatch Start-up Funding

As the State looks for alternatives to the current system, we created a Chittenden County Public Safety Authority for the purpose of regional dispatch. This concept works financially and operationally in the long term and will provide better service; however, there is a significant amount of capital needed for start-up. There is a \$2,100,000 total needed. So far, the municipalities have come up with about \$325,000; leaving a gap of \$1,775,000.

Staff Recommendation to the CCRPC Board: CCRPC look for opportunities for support.

11. State Budget Bill & American Rescue Plan Act (ARPA)

There will be a significant amount of public dollars deployed to assist with recovery from the COVID pandemic. CCRPC will collaborate with VLCT on assisting municipalities with the ARPA funds, and will assist with other requests/needs as they arise.

Staff Recommendation to the CCRPC Board: Staff recommends that CCRPC assist with the COVID pandemic recovery effort as requested/needed.

REGULAR MEETING AGENDA

Wednesday, July 21, 2021 - **6:00 p.m.**
Large Conference Room, CCRPC Offices
110 West Canal Street, Suite 202, Winooski, VT



Or Remotely:

Join Zoom Meeting: <https://us02web.zoom.us/j/82204274348>

One tap mobile: +16468769923,,82204274348#

Dial in: +1 646 876 9923 Meeting ID: 822 0427 4348

When participating remotely, please wait until you are recognized by the Chair before you speak. For each agenda item, the Chair will make sure to ask if anyone participating remotely would like to speak.

- a. *Use the "chat" feature or raise your hand if on video, or ask the Chair to request to speak.*
- b. *To ensure everyone is heard, only one person should speak at a time.*
- c. *When recognized by the Chair, introduce yourself each time.*
- d. *Speak up so everyone in person and on the computer or phone can hear clearly.*
- e. *When participating remotely, take steps to avoid background noise, and make sure your microphone/phone is muted when you are not speaking.*

CONSENT AGENDA –

C.1 Minor TIP Amendment – **Attached***

DELIBERATIVE AGENDA

1. Call to Order; Attendance; Changes to the Agenda (Action; 1 minute)
2. Public Comment Period on Items NOT on the Agenda (Discussion; 5 minutes)
3. Action on Consent Agenda* (MPO Action, if needed; 1 minute)
4. Approve Minutes of June 16, 2021, Meeting* (Action; 1 minute)
5. Telework trends, CATMA * (Discussion: 30 minutes)
6. FY22 Meeting Calendar* (Action: 1 minute)
7. FY22-25 Transportation Improvement Program (TIP) *
 - a. Public Hearing (MPO Action; 10 minutes)
 - b. Action on the TIP (MPO Action; 1 minute)
 - c. Certification of the Planning Process* (MPO Action: 1 minute)
8. Committee member review/volunteers* (Discussion; 10 minutes)
9. ???* (Action; 10 minutes)
10. Chair/Executive Director Report (Discussion; 10 minutes)
 - a. Equity Leadership Team update
 - b. CEDS update
 - c. Public Meetings/Office Re-opening update
11. Committee/Liaison Activities & Reports * (Information, 2 minutes)
 - a. Executive Committee ([draft minutes](#) June 2, 2021)*
 - i. Act 250 Sec 248 letters
 - b. Transportation Advisory Committee ([draft minutes](#) June 1, 2021)*

*In accordance with provisions of the Americans with Disabilities Act (ADA) of 1990, the CCRPC will ensure public meeting sites are accessible to all people. Requests for free interpretive or translation services, assistive devices, or other requested accommodations, should be made to Emma Vaughn, CCRPC Title VI Coordinator, at 802-846-4490 ext. *21 or evaughn@ccrpcvt.org, no later than 3 business days prior to the meeting for which services are requested.*

- c. Clean Water Advisory Committee ([draft minutes](#) June 1, 2021)*
- d. MS-4 Sub-Committee ([draft minutes](#) June 1, 2021)*
- e. Brownfields Advisory Committee ([draft minutes](#) May 11, 2021)*
- f. Planning Advisory Committee ([draft minutes](#) May 12, 2021)*

- 12. Future Agenda Topics (Discussion; 5 minutes)
- 13. Members' Items, Other Business (Information, 5 minutes)
- 14. Adjourn

The June 16, 2021 Chittenden County RPC streams LIVE on YouTube at:

https://www.youtube.com/playlist?list=PLlJLFn4BZd2O0I4hJU_nJ9q0I3PdQR0Pp.

The meeting will air Sunday, June 20, 2021 at 1 p.m. and is available on the web at: <https://www.cctv.org/watch-tv/series/chittenden-county-regional-planning-commission>.

Upcoming Meetings - Unless otherwise noted, all meetings are held at our offices:

- Transportation Advisory Committee – Tuesday, July 6, 2021, 9am
- Clean Water Advisory Committee - Tuesday, July 6, 2021, 11am
- CWAC MS4 Subcommittee - Tuesday, July 6, 2021, ~12:30pm
- Executive Committee – Wednesday, July 7, 2021, 5:45pm
- CCRPC Board Meeting - Wednesday, July 21, 2021, 6:00pm
- Planning Advisory Committee – TBD, 2:30pm

Tentative future Board agenda items:

| | |
|---|---|
| August | No Meeting |
| September 15, 2021 – Annual Celebration (in person at HULA, Lakeside Ave, Burlington) | Committee Member Appointments (including LRPC) Underhill Town Plan? VPSP2 Status? |
| October 20, 2021 | <i>Board training prior to the Board meeting</i> ECOS Plan Schedule Municipal Dues Equity Summit 2020 Census results? |

*In accordance with provisions of the Americans with Disabilities Act (ADA) of 1990, the CCRPC will ensure public meeting sites are accessible to all people. Requests for free interpretive or translation services, assistive devices, or other requested accommodations, should be made to Emma Vaughn, CCRPC Title VI Coordinator, at 802-846-4490 ext. *21 or evaughn@ccrpcvt.org, no later than 3 business days prior to the meeting for which services are requested.*