

# Bridge Street Complete Streets Corridor Study

## Public Meeting

December 10<sup>th</sup>, 2020



# Agenda



Introductions



Review Previous Studies



Review Draft Purpose & Needs



Study Area



Discuss Issues & Opportunities



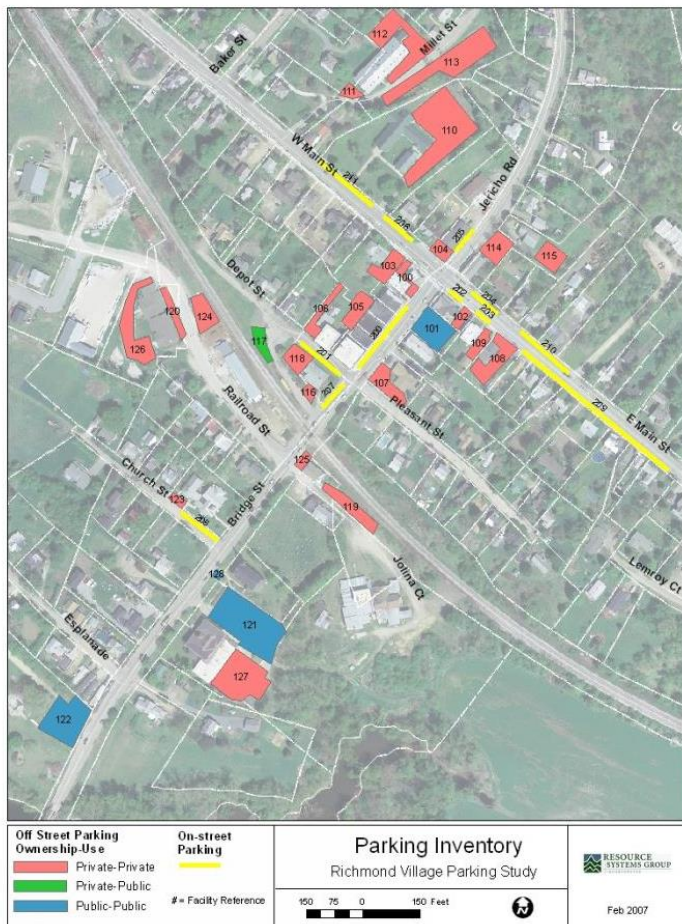
Next Steps

# Introductions

## Project Team

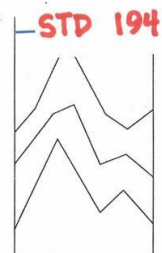
- **CCRPC** | Jason Charest, Sai Sarepalli, Bryan Davis
- **Town of Richmond** | Ravi Venkataraman &  
Transportation Committee Members
- **VHB** | Jenn Conley & Karen Sentoff

Figure 2: Parking Inventory



# Previous Studies

- 1992 Richmond Traffic Network Analysis
- 2007 Richmond Village Parking Study



Richmond, Vermont  
Traffic Network Analysis &  
Plan for Implementation



RESOURCE  
SYSTEMS  
GROUP  
INC.

Norwich, Vermont

Prepared for:

Town of Richmond, Vermont  
June, 1992



Chittenden County Regional  
Planning Commission



# Previous Studies

## Bridge Street Bicycle & Pedestrian Feasibility Study Richmond, Vermont Recommendations North Section Map 3a

### Legend

- New Crosswalks
- Recommendation #1
- Recommendation #2
- Recommendation #3
- Recommendation #4
- Recommendation #5
- Recommendation #6
- New Street Trees
- Existing Crosswalks
- Existing Street Trees
- Existing Sidewalks
- Property Lines

**BROADREACH**  
Planning & Design

PO Box 321  
Charlotte, Vermont 05445  
802-425-5061

Lamoureux & Dickinson  
Heritage Landscapes LLC  
Consulting Archeological Program

## Recommendations

- Bridge to Railroad (1)
  - Restripe 10' travel lane & 2' paved shoulder
- Town Offices to Pleasant Street (2)
  - New 10' travel lane and 3' paved shoulder with new east side sidewalk
- Market to Dental Office (3)
  - Curb & 7' sidewalk
- Market Frontage (4)
  - Mini Park
- Volunteers Green (6)
  - Raised sidewalk



# Previous Studies

## Bridge Street Bicycle & Pedestrian Feasibility Study

Richmond, Vermont

Recommendations

South Section

Map 3b

### Legend

- ■ ■ New Crosswalks
- Recommendation #7
- Recommendation #8
- Recommendation #11
- Recommendation #12
- Recommendation #13
- Recommendation #14
- New Street Trees
- Existing Crosswalks
- Existing Sidewalks
- Existing Street Trees
- Property Lines

**BROADREACH**  
Planning & Design

PO Box 321  
Charlotte, Vermont 05445  
802-425-5061

Lamoureux & Dickinson  
Heritage Landscapes LLC

## Recommendations

- Bridge to Huntington Road (7)
  - Restripe existing to 10' travel lane and 4' paved shoulders
- Bridge to Huntington Road (8/9)
  - New 10' travel lane and 3' paved shoulders with 2'-4' green space on west side
- Reduce Turning Radii (11/12)
  - Cochran Road / Huntington Road Intersection
- Huntington Road (13/14)
  - Restripe existing to 10' travel lane and 2' paved shoulder with sidewalk extension
  - New 10' travel lanes, 3' paved shoulders with 5' sidewalk and curb on south side

# DRAFT Project Purpose

- The purpose of the **Bridge Street Complete Streets Corridor Study** is to identify and prioritize improvements that enhance multimodal mobility and safety through the Richmond Village Center. The study will evaluate, select, and develop improvements to better accommodate pedestrians and bicyclists, specifically:
  - Along the east side of Bridge Street from US Route 2 to Jolina Court;
  - At the intersection of Jolina Court and Railroad Street; and,
  - At the intersection of Cochran Road and Huntington Road.



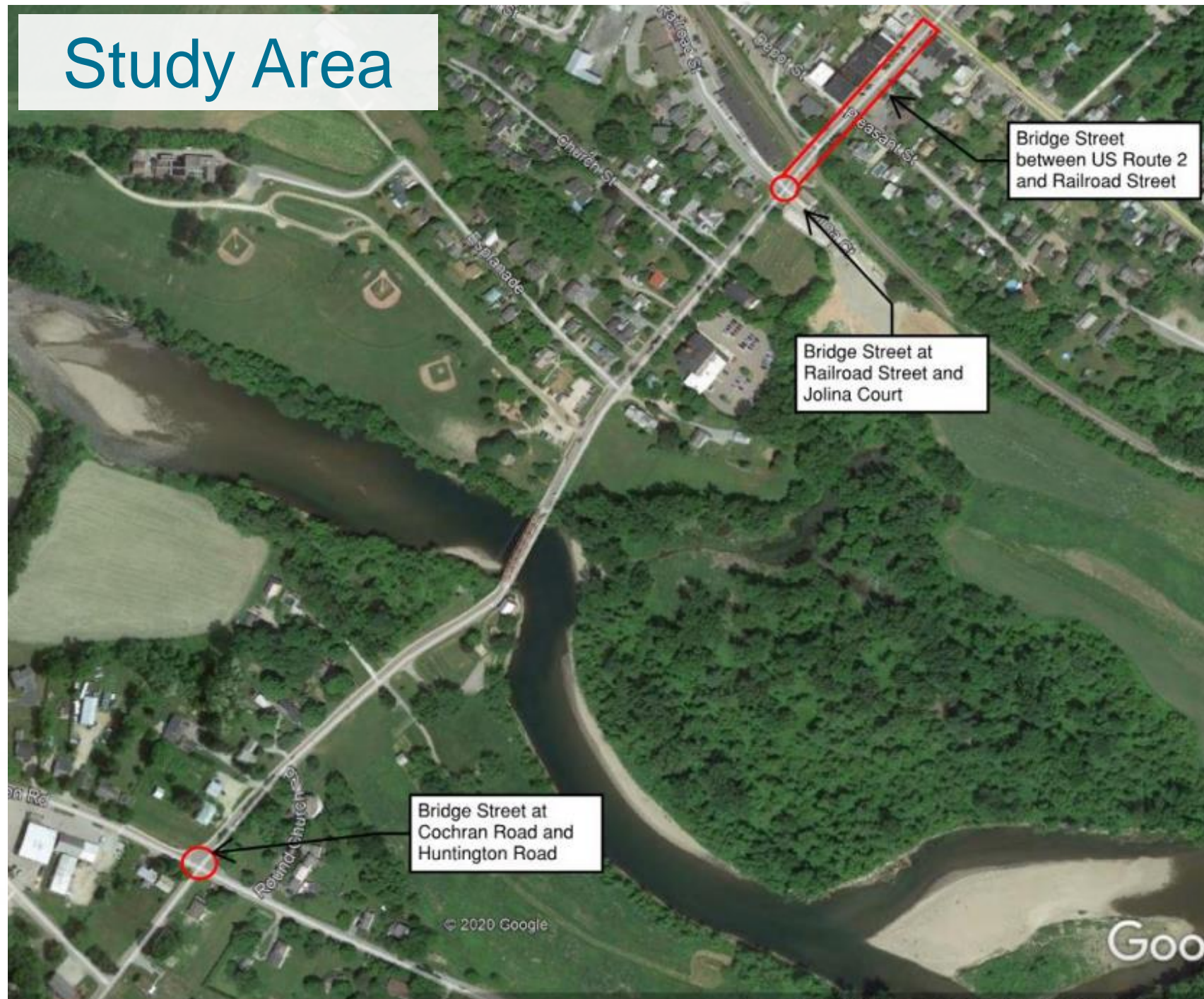
# DRAFT Project Needs

- **Enhance mobility for pedestrians and bicyclists**
  - Critical gaps in existing infrastructure
- **Improve safety for all modes**
  - High Crash Location (HCL) segment and intersection within study area





# Study Area



The background is a solid blue color with a subtle, abstract pattern of white lines. These lines form various geometric shapes, including squares, rectangles, and curved lines that intersect to create a complex, woven texture. The pattern is more prominent in the center and fades slightly towards the edges.

# Public Input

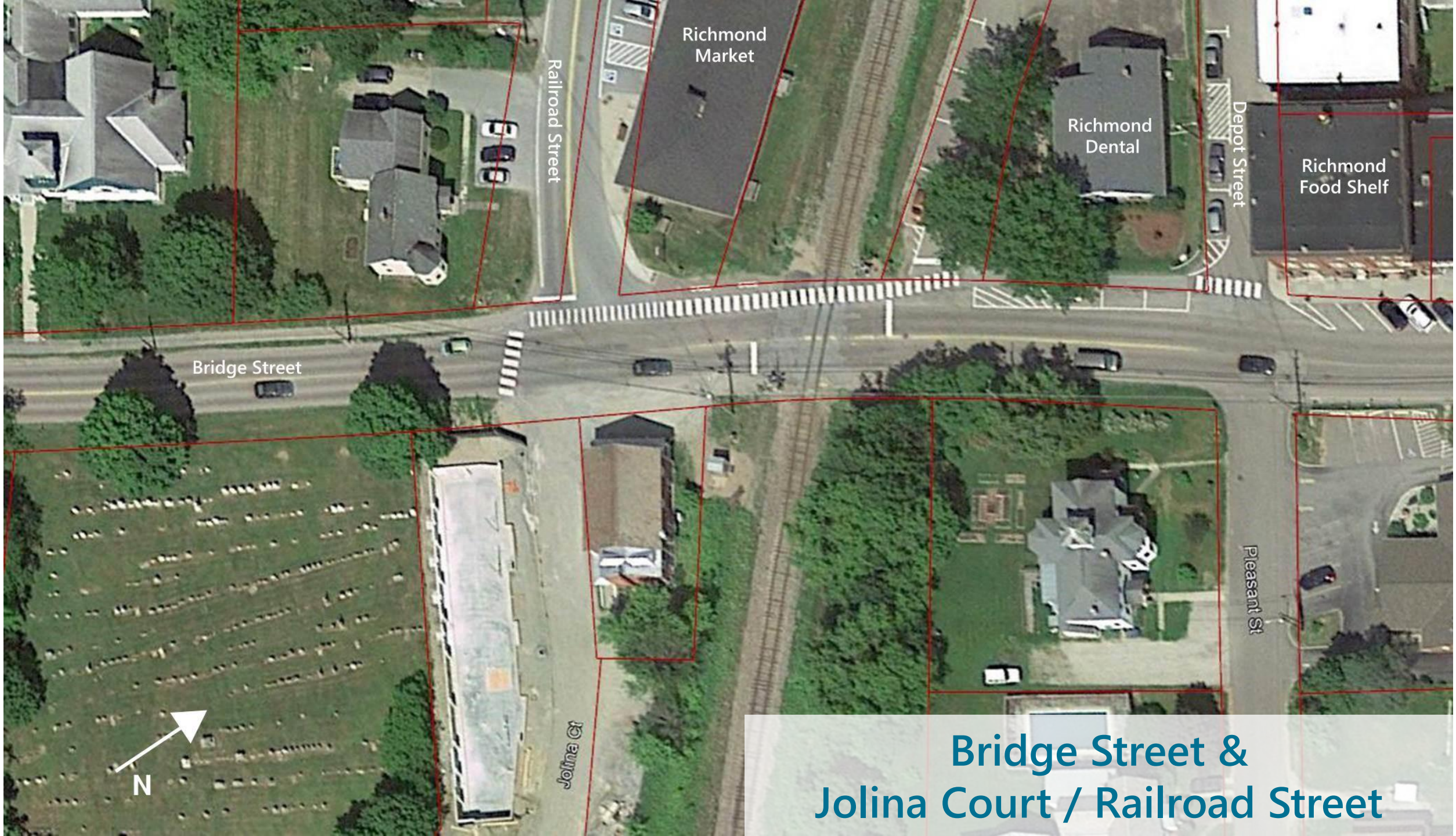
## Issues & Opportunities



# Bridge Street between US 2 and Depot Street







Railroad Street

Richmond Market

Richmond Dental

Richmond Food Shelf

Depot Street

Bridge Street

Pleasant St

Jolina Ct

Bridge Street &  
Jolina Court / Railroad Street



# Bridge Street & Cochran Road / Huntington Road

Long Trail  
Physical Therapy

Huntington Road

Thompson Road

Bridge Street

Cochran Road

Google Earth



135 ft



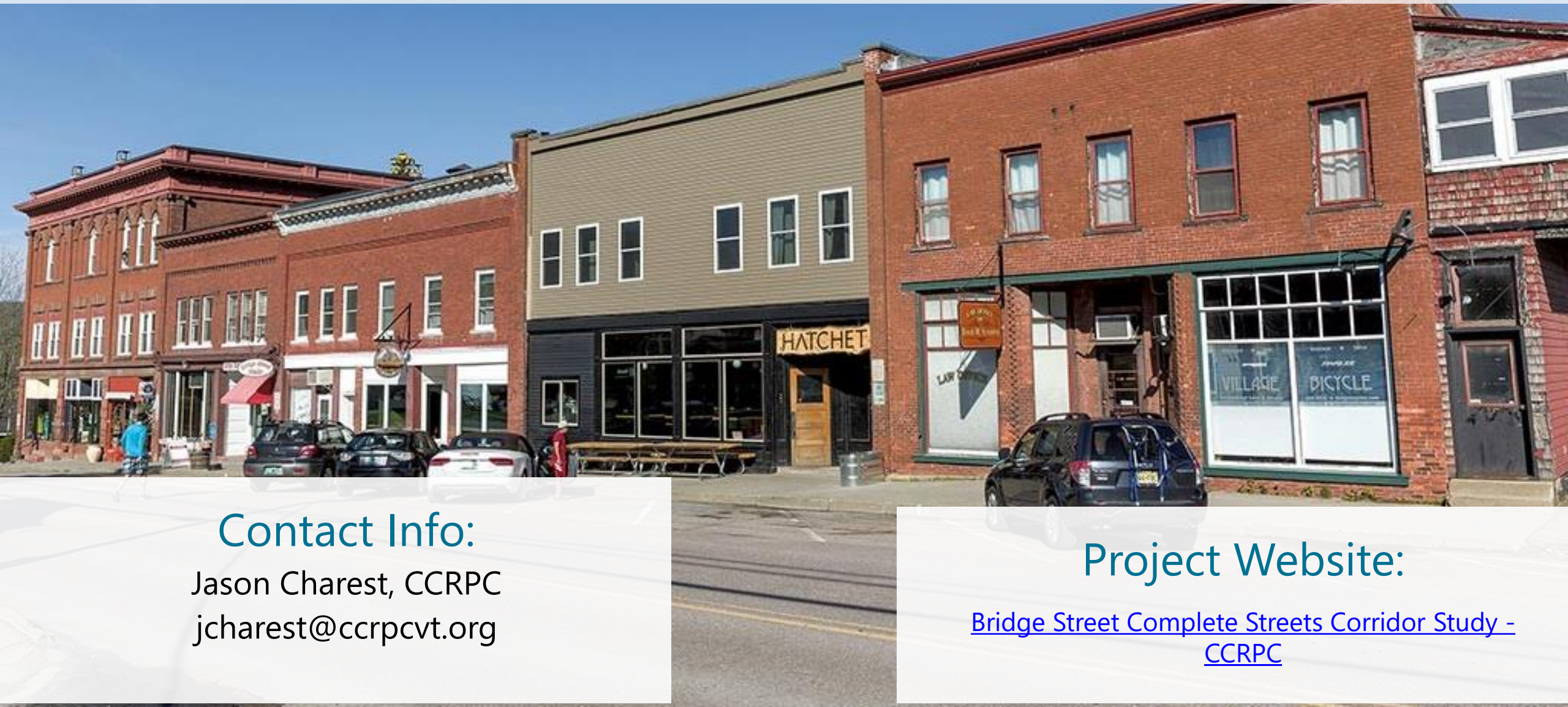
# Next Steps

- Develop Alternatives
  - Draft Alternatives Presentation tentatively scheduled for March 2021





# Stay Connected with the Bridge Street Complete Streets Corridor Study!



## Contact Info:

Jason Charest, CCRPC  
[jcharest@ccrpcvt.org](mailto:jcharest@ccrpcvt.org)

## Project Website:

[Bridge Street Complete Streets Corridor Study -  
CCRPC](#)

# Supplemental Slides



# Bridge Street between US 2 and Railroad Street

Richmond Market

Richmond Dental

Richmond Food Shelf

Sweet Simone's

Village Bicycle

Bridge Street

Railroad St

Depot St

2

Jericho Rd

Greensea Systems

TD Bank

Pleasant St

Johna Ct

U.S. Rte 2

N

163 ft

© 2020 Google

Google Earth