

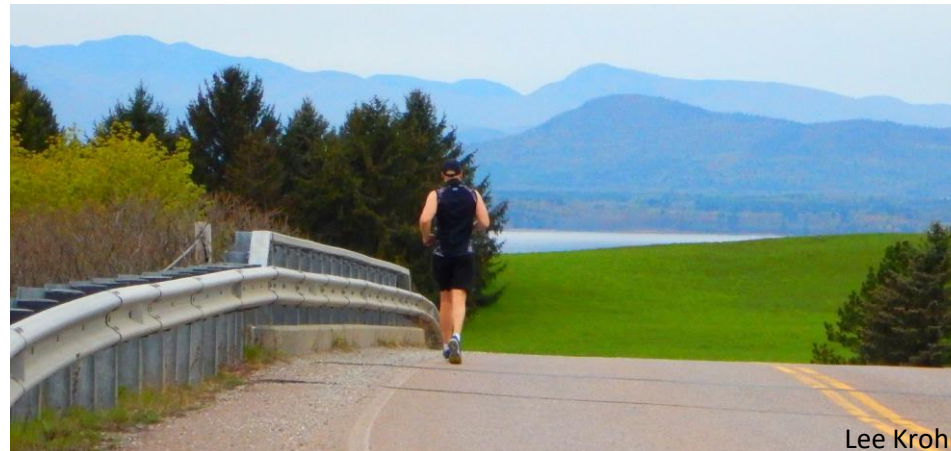


CHITTENDEN COUNTY RPC
Communities Planning Together

Shelburne Walk & Bike Connectivity Study

Community Forum #1

Wednesday, March 9, 2022



Meeting Agenda

1. Welcome & Introductions
2. What will this Study do?
3. Background
4. Community Priorities
5. StoryMap Overview
6. Survey/Your Priorities
7. Comments & Questions
8. Next Steps
9. Contact Us

Study Team

Town of Shelburne

Adele Gravitz, Planning Director

Lee Krohn, Town Manager

CCRPC

Jason Charest, Sr. Transportation Planning Engineer

Bryan Davis, Sr. Transportation Planner

Marshall Distell, Sr. Transportation Planner

Pam Brangan, GIS Data & IT Manager

DuBois & King

Dayton Crites, Senior Planner

Julia Ursaki, Staff Engineer

Advisory Committee

Jane Zenaty, Village Pedestrian Safety Group

Jessica Coleman, Bicycle Pedestrian Paths Comm.

Kate Lalley, Selectboard

Marla Keene, Planning Commission

Steve Kendall, Planning Commission

Dave Connery, Former School Board Member



What will this Study do?

- Catalog and assess previous studies
- Align community priorities with
 - Prior studies
 - Shelburne Comprehensive Plan (2019)
 - Econ. Development Report (2021)
 - Vermont Complete Streets Guidance (2012)
- Create a prioritized list of active transportation projects to make Shelburne a safer, more comfortable, and more inviting place to walk and bike.



Background

- Over 20 plans, designs, and proposals for improved:
 - Trails
 - Sidewalks
 - Crosswalks
 - Bike lanes

Expanding Shelburne's integrated network of sidewalks, paths, bike lanes and trails to accommodate walkers, cyclists, joggers, and other non-motorized travel modes in compliance with a placemaking planning approach.

- 2019 Shelburne Town Plan

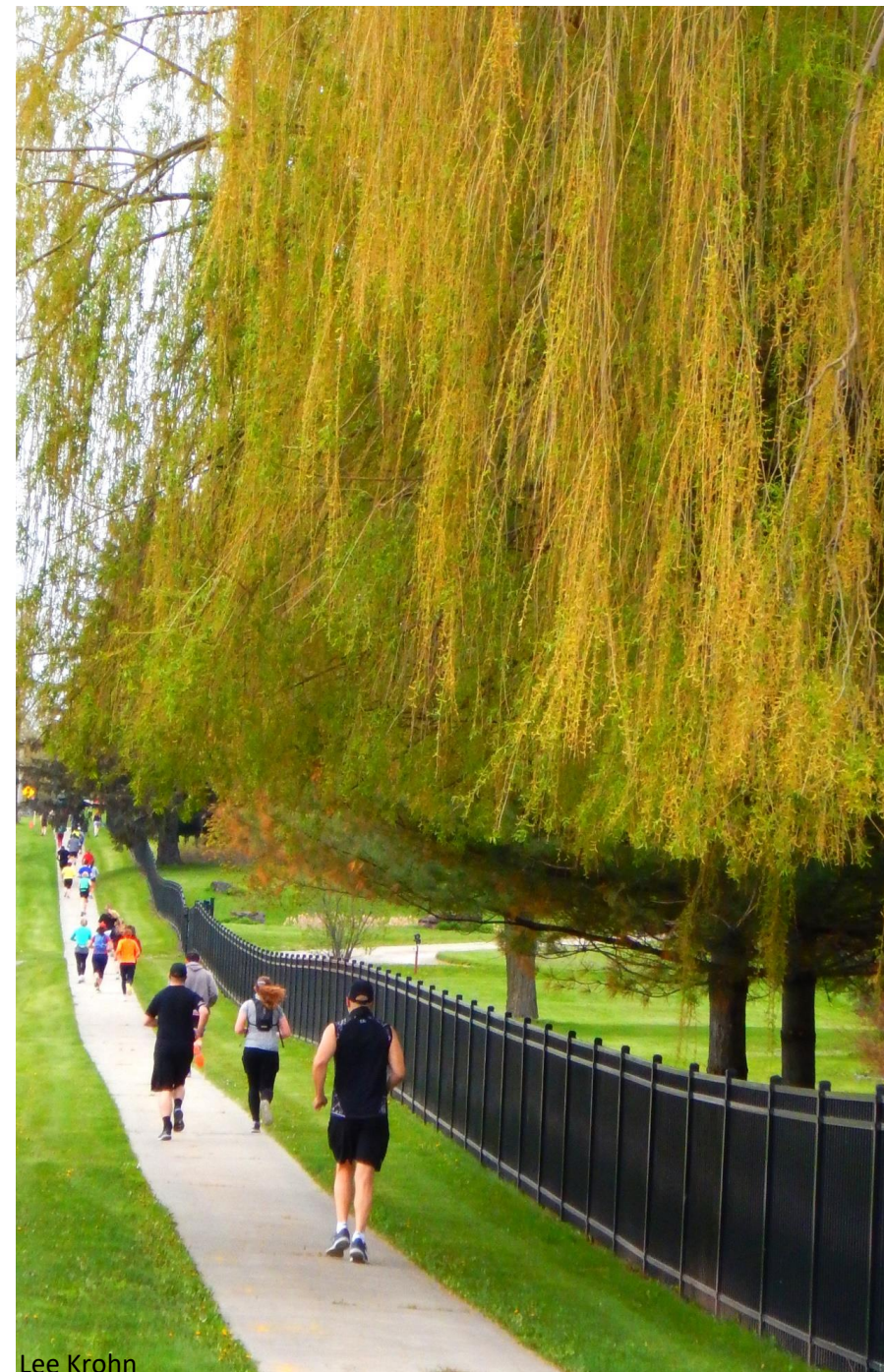
Prioritize investments in additional trails, sidewalks, and bike paths that connect Shelburne amenities, tourism anchors, and area businesses.

- 2021 Economic Development Report

StoryMap Overview

Built for two key purposes:

1. Inform the community regarding existing and proposed walk & bike connectivity projects and improvements, and
2. Provide an opportunity for community members to give feedback that will directly shape the project priorities of Shelburne.



Lee Krohn

Sidewalks | Existing

Shelburne's existing sidewalk network covers several miles along Route 7, with more coverage on streets closer to the Village and some neighborhood offshoots.

Existing Sidewalks

Proposed Sidewalks

Designated Village Center

Town Boundary

Building Footprints



Crosswalks | Proposed

The 2014 US7/Harbor Rd/Falls Rd Scoping Study proposes **adding a median refuge island** at the Route 7 crosswalk at the Church Street intersection.

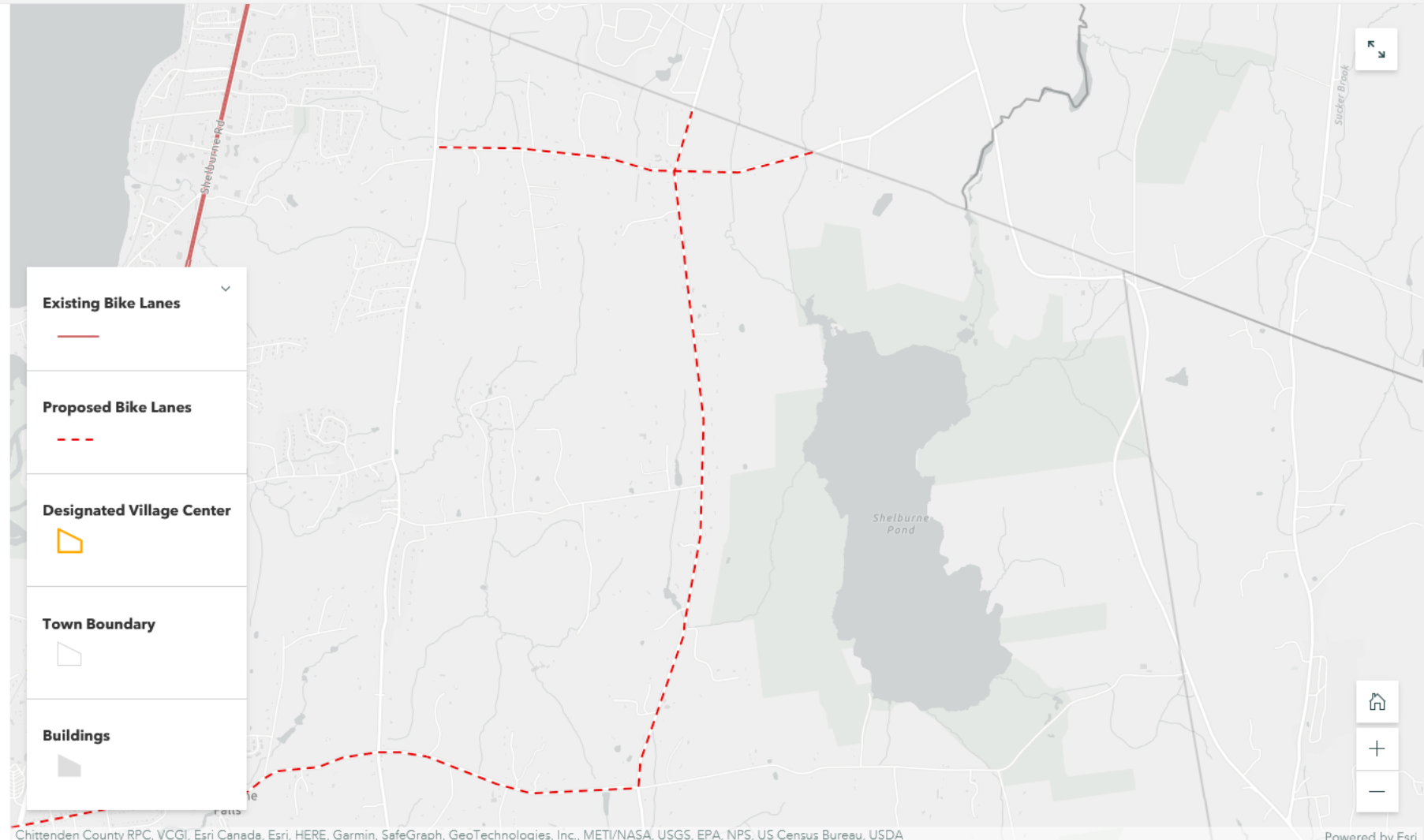


Bike Lanes | Proposed

Bike lanes are also proposed on **Dorset Street**, from the South Burlington/Shelburne town boundary to Irish Hill Road.

These bike lanes would connect into an Rec Path corridor on Dorset Street in South Burlington.

South Burlington Bike/Ped Map



Shared Use Paths | Proposed

The 2017 Bay Road Pedestrian and Bicycle Mobility Study recommends building a **shared use path** along Bay Road.



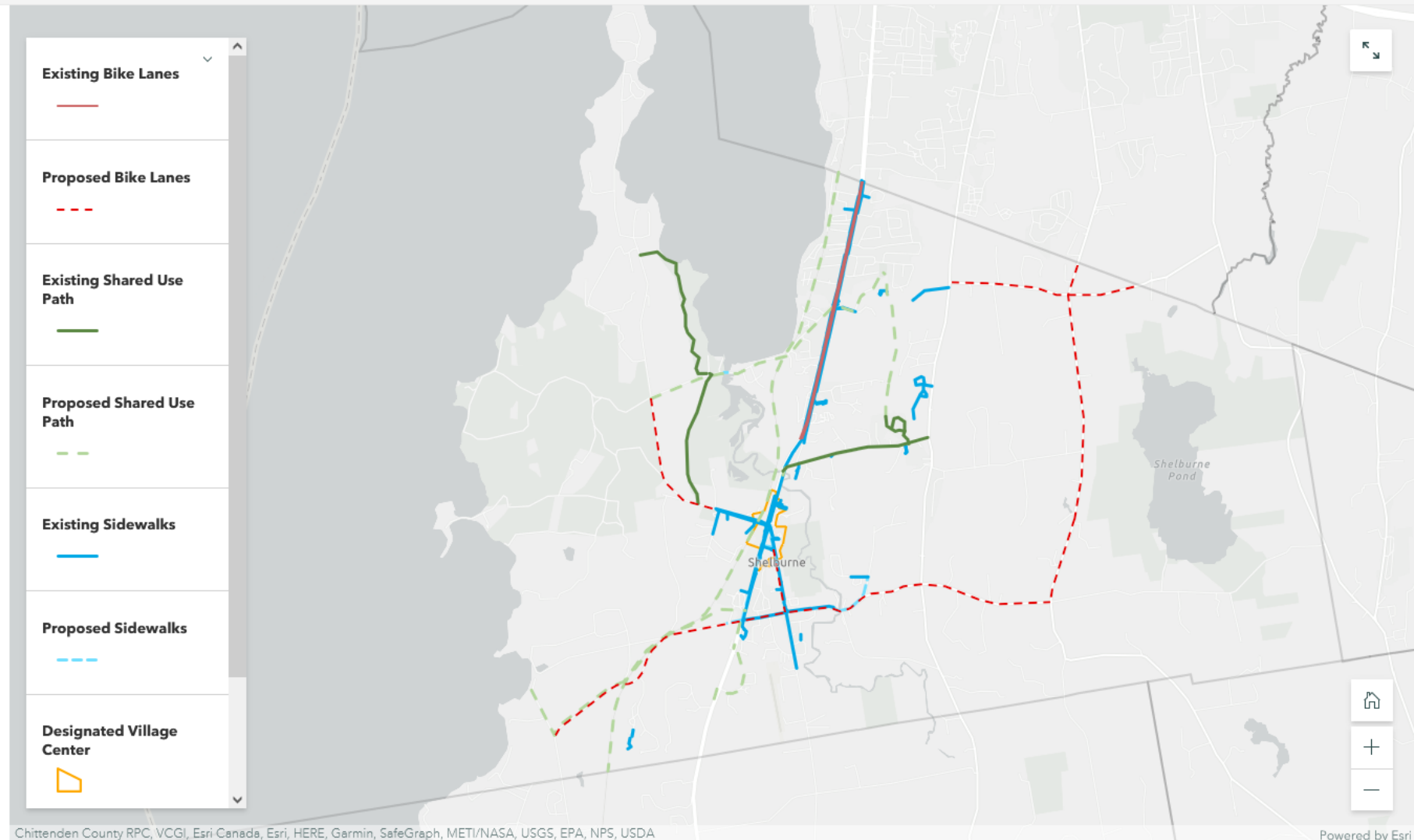
Esri Community Maps Contributors, Chittenden County RPC, VCGI, © OpenStreetMap, Microsoft, Esri Canada, Esri, HERE, Garmin, SafeGraph, GeoTechnologies, Inc., METI/NASA, USGS, EPA, NPS, US Census Bureau, USDA Powered by Esri

Shared Use Path, Sidewalk, and Bike Lane Connectivity

This map shows how existing and planned sidewalks, bike lanes and shared use paths may connect into each other.

Bicycling loops can be created along bike lane and shared use path routes by filling short gaps between existing and proposed facilities, like the quarter mile gap between the existing bike lanes on Route 7 and the shared use path on Webster Road.

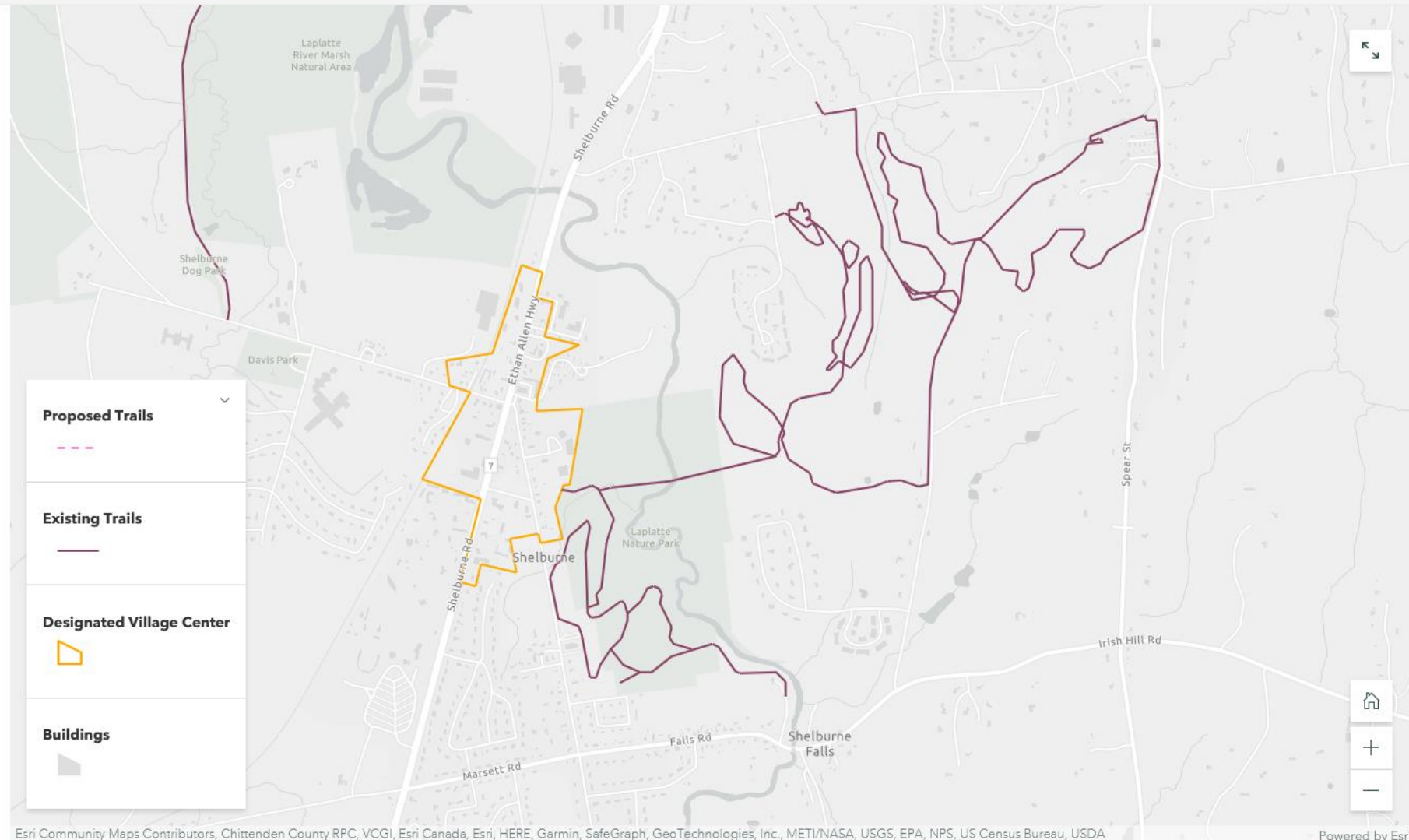
This map also illustrates how sidewalk segments can connect into the shared use path network.



Trails | LaPlatte Nature Park and Gardenside Trails

The Gardenside Trails are an informal network of trails on privately-owned land touching Spear Street, Webster Road, Acorn Lane, and Thompson Road.

Across the river, the town-owned LaPlatte Nature Park offers trails for walking, hiking, snowshoeing, and other recreation like sledding and cross-country skiing.



Esri Community Maps Contributors, Chittenden County RPC, VCGI, Esri Canada, Esri, HERE, Garmin, SafeGraph, GeoTechnologies, Inc., METI/NASA, USGS, EPA, NPS, US Census Bureau, USDA

Powered by Esri

Misc Prior Studies | Points

The 2016 Falls Road & Marsett Road Traffic Calming Review recommends installing a **mini roundabout** at the Falls Rd & Marsett Rd intersection.



Esri, Community Maps Contributors, Chittenden County RPC, VCGI, © OpenStreetMap contributors, Microsoft, Esri, Canada, Esri, HERE, Garmin, SwireGraph, GeoTechnologies, Inc., METI/NASA, USGS, EPA, NPS, US Census Bureau, USDA | V... Powered by Esri

Your Priorities

Now that you've seen some of the numerous recommendations that could shape the future of Shelburne, we want to know more about your priorities when it comes to choosing where to invest public funds in walking and bicycling infrastructure.

Having trouble filling out the survey below? [Click here to open it in a new window.](#)

Shelburne Walk/Bike Connectivity Study :: This or That?

This survey is designed to help shape the recommendations of Shelburne's Bicycle and Pedestrian Connectivity study by identifying and weighting community priorities related to public investment on bicycle, pedestrian, and trail related infrastructure.

This first part presents various priorities as "false dichotomies" - Completion vs. Maintenance, Recreation vs. Transportation, and similar. These polling questions will not be the guides of the planning outcome, but rather, act as useful tools to identify which community priorities take precedent over one another.

Comments & Questions

- Is there existing infrastructure we're missing?
- Are there planned improvements not shown?
- Broadly speaking, what are your priorities for walking and biking?



Lee Krohn

Next Steps

- Survey open till the end of March.
- Advisory Committee Meeting #2 – End of April
- Community Forum #2 – mid-May
- Selectboard Presentation – July



Contact

- Jason Charest, CCRPC – jcharest@ccrpcvt.org
- Adele Gravitz, Shelburne – agravitz@shelburnevt.org

Website

- <https://bit.ly/shelburne-walk-bike>

Thank You!

