

Presentation to Basin 5 Water Quality Council

4-20-2022

Lake Iroquois Info:

Located in Williston, Hinesburg, Richmond, St George

132 acres

Public beach and fishing access at north end, dam at south end

Deepest at 32 feet, most 15 feet or less

Hilly terrain on 2 sides (ideal terrain for phosphorous runoff)

Major Recent Projects on Lake Iroquois to reduce non-point phosphorus introduction into the lake

- Riparian buffer at the fishing access
- Major redesign of Lake Iroquois Beach Area
 - Tapered parking area so rainwater runs away from lake
 - Rain Garden
 - Revised parking
- Construction and plantings to divert runoff flow on Pine Shore Drive (2017)
 - Similar work done around 2010 on Shadow Lane
- Six Lake Wise properties, several certificates, working toward 'gold' recognition for the lake (15 properties required of 92 lakeside).
 - Lake Wise requirements (4 categories):
 - Shoreland (native vegetation)
 - Recreation area (minimize paths)
 - Driveway (minimize non-pervious area)
 - Properly functioning septic system and structure

We do weekly water sampling (that is lab tested through DEC) to monitor phosphorous and clarity levels

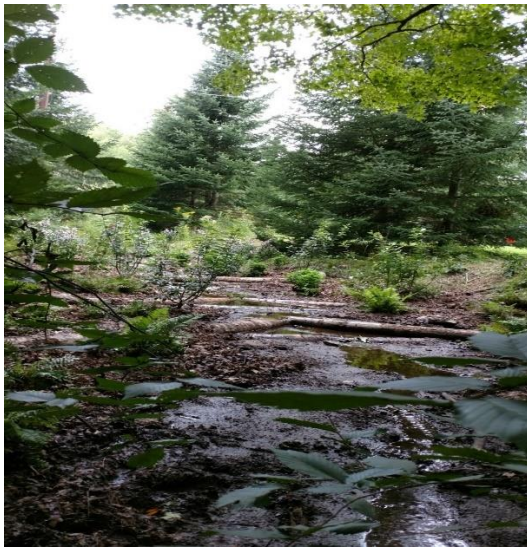
Construction and plantings to divert runoff flow on Pine Shore Drive

The overall aim of this project is to achieve velocity dissipation, reduce erosion, and decrease sediment carried into the lake by the stream paralleling Pine Shore Drive.

Insert rock in water flow areas to reduce erosion

Plant native species flora in streambeds and on banks

Before (August 2017):



After (October 2018):



Riparian Buffer Project (the first one in VT, and assisted by DEC personnel)

