



CHITTENDEN COUNTY RPC

Communities Planning Together

Planning Advisory Committee Agenda

Wednesday, May 11, 2022

2:30pm to 4:00pm

Meeting will be held virtually.

Virtual Location: <https://us02web.zoom.us/j/85697787260>

For those who would prefer to join by phone or those without a microphone on your computer, please dial in using your phone. (For supported devices, tap a one-touch number below to join instantly.)

Dial: +1 646 876 9923; Meeting ID: 856 9778 7260

For supported devices, tap a one-touch number join instantly: +16468769923,,85697787260#

Agenda

2:30 Welcome and Introductions, Joss Besse

2:35 Approval of April 13, 2022 Minutes*

2:40 Active Transportation Plan, Bryan Davis

Bryan Davis, CCRPC staff, will share progress on the Active Transportation Plan update and facilitate a group discussion to learn about walk/bike priorities, opportunities and challenges from PAC members and their constituents. Visit the project webpage and share comments using an interactive map tool:

<https://tinyurl.com/RegionalWalkBikePlan>.

3:10 CCRPC Updates, Regina Mahony

- a. ESRI ArcGIS Urban status
- b. Broadband – issues and challenges
- c. Legislative Update – though it may be too soon to know what's what.
- d. ECOS Update – CEDS, I89 study, etc
- e. Final Land Use Climate Change Guide is up on the website [here](#).
- f. Equity work status
- g. Three municipal plan initial consultations coming up: South Burlington, Essex & Jericho

3:25 Members Items Open Forum, Members

If anyone has anything they'd like to bring up with the group, please do so.

3:45 Regional Act 250/Section 248 Projects on the Horizon - Please email Regina and Taylor with projects on the horizon.

3:50 Other Business

- a. VLCT issues statewide **Tax Increment Financing assessment:** [Press Release](#) and [Report](#).
- b. The Vermont Department of Housing and Community Development, the Vermont Department of Health, the Vermont Community Foundation, and Patronicity are currently accepting placemaking

In accordance with provisions of the Americans with Disabilities Act (ADA) of 1990, the CCRPC will ensure public meeting sites are accessible to all people. Requests for free interpretive or translation services, assistive devices, or other requested accommodations, should be made to Emma Vaughn, CCRPC Title VI Coordinator, at 802-846-4490 ext 121 or evaughn@ccrpcvt.org, no later than 3 business days prior to the meeting for which services are requested.



CHITTENDEN COUNTY RPC

Communities Planning Together

projects for [Better Places](#), a statewide community grant program that empowers Vermonters to create vibrant and inclusive public places in the hearts of Vermont communities. Those who are interested in the Better Places program can visit the website to [learn more](#) or contact [Richard Amore](#). Or join Patronicity on Instagram Live on Thursday, May 12th at 12pm EST to learn more about the Better Places program and show how it is supporting communities across Vermont.

- c. The Department of Housing and Community Development and the Preservation Trust of Vermont is pleased to present the **Downtown and Historic Preservation Conference on Thursday, June 9, 2022**, in St. Johnsbury. Please [visit the website](#) for more information on the schedule, sessions, and additional conference information.
- d. **Invitation to Request Funding through United Way's Prevention Center of Excellence grant** from the VT Division of Alcohol and Drug Abuse Programs (ADAP). As part of that grant, United Way will make subgrants of up to \$10,000 to local community organizations working to prevention substance misuse and advance wellbeing of youth and young adults. See the attached invitation for this program*.
- e. DEC is now accepting applications for **ARPA – Pretreatment grants to fund wastewater pretreatment projects at VT businesses and municipal wastewater treatment facilities**. To apply for an award please respond to the Department's ["Pretreatment Grant Funds for Businesses and Municipalities RFP"](#). **If you are a municipality applying for funding, the following projects are eligible:**
 - Development of Technically Based Local Limits in accordance with Environmental Protection Agency's (EPA) Local Limits Development Guidance (EPA 833-R-04-002A) and State and Federal Regulations.
 - Industrial User Surveys to identify the industrial users discharging or hauling non-domestic wastewater to the municipal wastewater treatment facility (WWTF) and characterize the quality and volume of wastewater received by these users.
 - Updates to the Sewer Use Ordinance to support development of Technically Based Local Limits, Industrial User Survey, and/or control of high strength or toxic discharges to a WWTF.**If you are a business applying for funding, the following projects are eligible:**
 - Design and installation/construction of a pretreatment system to treat the process wastewater discharge from a business to a VT municipal WWTF. These projects shall be designed and implemented by a Vermont Professional Engineer with experience in industrial wastewater treatment design and construction.
 - Equipment/infrastructure to manage/store high-strength waste or concentrated by-products from your manufacturing process (side streaming, pollution prevention).

4:00 Adjourn

* = Attachment

NEXT MEETINGS: July 13, 2022 at 2:30pm

Here are the future PAC meetings so you can hold the time in your calendars. Just keep in mind that sometimes we have to adjust these dates for various reasons:

September 14

November 9

In accordance with provisions of the Americans with Disabilities Act (ADA) of 1990, the CCRPC will ensure public meeting sites are accessible to all people. Requests for free interpretive or translation services, assistive devices, or other requested accommodations, should be made to Emma Vaughn, CCRPC Title VI Coordinator, at 802-846-4490 ext 121 or evaughn@ccrpcvt.org, no later than 3 business days prior to the meeting for which services are requested.

CHITTENDEN COUNTY REGIONAL PLANNING COMMISSION
PLANNING ADVISORY COMMITTEE - MINUTES

DATE: Wednesday, April 13, 2022
TIME: 2:30 p.m. to 4:00 p.m.
PLACE: Virtual Meeting via Zoom with link as published on the agenda

Members Present:

Joss Besse, Bolton
Eric Vorwald, Winooski
Larry Lewack, Charlotte
Cathynn LaRose, Colchester
Katherine Sonnick, Jericho
Adele Gravitz, Shelburne (left at 3pm)
Ravi Venkataraman, Richmond
Darren Schibler, Essex
Alex Weinhausen,
Cymone Haiju, Milton

Staff:

Regina Mahony, Planning Program Manager
Melanie Needle, Senior Planner
Taylor Newton, Senior Planner
Ann Janda, Senior Energy Project Manager

Other:

Sydney Rich, ESRI
Jason Karian, ESRI

1. Welcome and Introductions

Joss Besse called the meeting to order at 2:34 p.m.

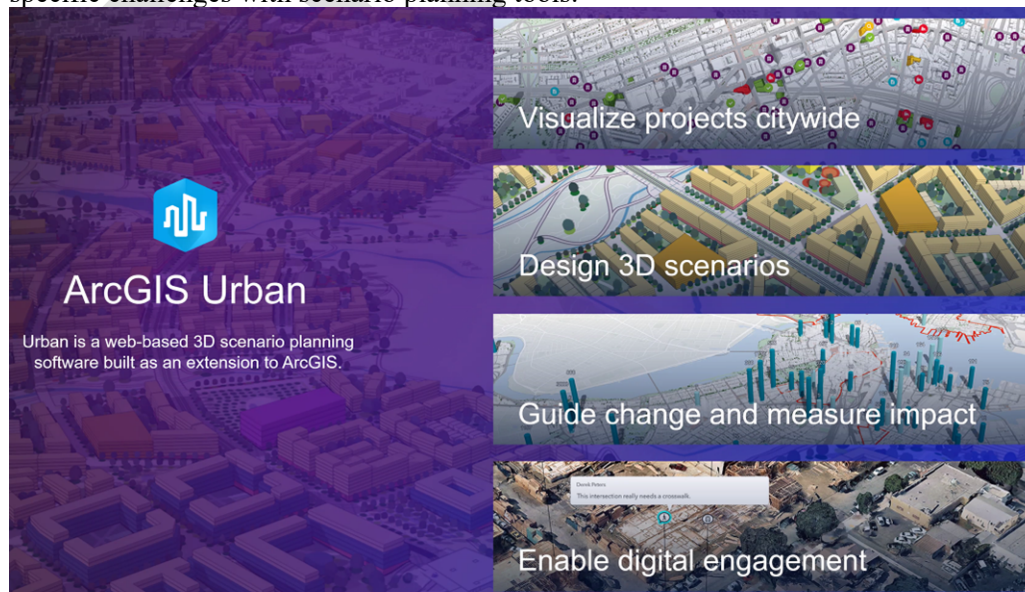
2. Approval of March 23, 2022 Minutes

Darren Schibler made a motion, seconded by Eric Vorwald to approve the March 23, 2022 minutes. No further discussion. MOTION PASSED. Ravi Venkataraman abstain.

3. Arc Urban

Background: On September 9, 2020 ESRI provided the PAC with an ArcGIS Urban demo. CCRPC has continued investigating this tool for use in 3D visualization of conceptual future development scenarios.

Melanie Needle introduced Sydney Rich and Jason Karian from ESRI. Sydney Rich provided an overview of the variety of ESRI products and platforms. Sydney Rich explained that ArcGIS Urban can apply GIS to solve some specific challenges with scenario planning tools.



Sydney also added that you don't need to be a GIS expert to use it. It was designed by planners for planners. Sydney then showed an example of a "workshop" where residents would be able to provide input into what they'd like to see in the development of a site.

Jason Karian then provided an overview of how Talent, OR (population 6000 people) has been using Urban to try to address temporary housing as a significant part of the town burned in the wildfires last year. Jason showed three scenarios for a particular site, and showed how the tool incorporates the zoning parameters (if some parameters don't exist, like FAR, you can leave it blank). Tools can provide outputs based on the three scenarios. The zoning parameters are incorporated. The tool can then compare outputs of the various scenarios. The program comes out of the box with parameters that feed the outputs. These parameters can be edited.

There was a question from the PAC about how CCRPC intends to use the tool? Melanie explained that there are two projects in the FY23 UPWP that we would like to use it for:

1. Essex build out analysis
2. Industrial uses in the county

Melanie added that the start up costs get the base map set up for the whole County, so even if there isn't a project on the table right now for each town it would be available for a variety of uses. Regina asked if the 3D buildings could be added to the online town maps. The ESRI folks indicated that would be possible.

Regarding cost-share, based on a preliminary cost estimate the cost share would be \$7,000 in total from the municipalities because we would be able to use PL funds to cover 80% of the cost. Once staff gets an actual cost estimate we will prepare some options for cost share based on land size, population, etc. The 3D mesh isn't available throughout the County in full so that would be factored in as well.

There was a question about whether the cost share would be from the municipal dues or in addition. Regina stated that it would be in addition to the municipal dues because those are already used to match our other grant funds.

Joss Besse and Melanie Needle asked for a show of hands for who would be interested in the tool. The majority, but not all, of town's indicated an interest.

4. Climate Change and Land Use Guide

Ann Janda provided an overview of the draft Climate Change and Land Use guide that CCRPC prepared to help address questions from Energy Committee members about how to address energy and climate change issues in zoning. Ann Janda explained that the document describes: the cons of low-density development on climate change; equity considerations and reference to the Guiding Principles for a Just Transition; tools for creating and reinforcing compact walkable settlements; tools to protect natural systems and the rural landscape for climate change mitigation; and finally a guide on buildings and what can be accomplished within zoning versus a building code.

Comments from the PAC included:

- Be careful about advocating for large minimum lot sizes. Also the visual examples from Ferrisburgh aren't really about large minimum lot sizes. In Hinesburg they got away from large minimum lot sizes, and instead separated density from lot size. Allow lots as small as ½ acre.
- There was a suggestion that 4414(6) provides zoning that allows access to energy plan (4382(a)(9)) and therefore thermal integrity standards for buildings. And therefore, land use regulations can do more than regulate outside of buildings. Perhaps there could be a little more wiggle room in the document.
- The smart growth tools and message will be helpful.
- In Charlotte, they were discouraged that they couldn't do more on building codes and are now looking at incentives.
- There was an appreciation for this guide so they don't have to do it in house. It could be helpful to explain that a reason for large lot sizes is the current use program.
- Visuals on pg. 4 – some are not hitting the mark. B2 and C2 don't seem to relate b/c C2 doesn't allow more development or at least that isn't what it shows.

- Not sure about reduction or elimination of impact fees in areas planned for growth, because even development in those areas creates a cost to the Town. May make sense for housing, but not climate change necessarily.

5. FY23 UPWP Review

Regina Mahony explained that the [draft FY23 UPWP was linked](#) in the agenda. Regina Mahony explained that all land use projects are included except for Bolton and the South Burlington technical assistance ask was cut down to a third of the original ask. This is because there aren't enough staff hours to accommodate all of the asks and we've assisted both Bolton and South Burlington for a number of years now. There was a question about whether the other asks were accommodated within the amount of available transportation dollars. Regina Mahony stated that all of the transportation asks were accommodated within the available funding.

6. Members Items Open Forum

Eric Vorwald asked how other towns are handling parcel updates? Essex has done this in house because they have a GIS person. Hinesburg has a long-term contract with NMERC to do updates annually. Paid for through assessor office rather than planning office. Regina stated that CCRPC has not done this work in the past.

7. Regional Act 250/Section 248 Projects on the Horizon.

Joss Besse asked the PAC to email Regina and Taylor any Act 250/Section 248 updates.

8. Other Business

- a. Quick discussion: We have an old ECOS indicator that was done with grant funds back in 2011. We are unaware of any municipalities doing any major zoning bylaw work to increase scenic resource protection since that time. Have any municipalities done any zoning amendments on scenic resource protections since 2011? Essex has done some of this work. Charlotte has not, but those principles are embedded throughout their regulations and are strongly enforced.
- b. April is Fair Housing Month - There are several ways the Fair Housing Project of CVOEO suggests that groups and municipal committees can get involved, including:
 - Share the attached news release in your networks*
 - Consider issuing a Fair Housing Month proclamation. This is an excellent way to raise awareness about housing equity in your community. You can see examples from Burlington and Montpelier here: <https://fairhousingmonthvt.org/fair-housing-month-proclamations>
 - Host a Fair Housing Month event or community housing discussion – and submit the information here: <https://forms.office.com/r/Kfia9Qe6LE>
 - And for those of you directly connected with housing sites or community groups, you can request all-ages HeART & Home art kits for distribution at <https://forms.office.com/r/Kfia9Qe6LE> or simply direct people to this page for downloadable art prompts and info about how to submit art and enter to win prizes: <https://fairhousingmonthvt.org/community-art-project>

9. Adjourn

Meeting adjourned at 4:00pm.

Respectfully submitted, Regina Mahony



**United Way of
Northwest Vermont**

**Invitation to Request Funding
Subgrants from Vermont's Prevention Center of Excellence
May 2022**

Contact: Megan Bridges megan@unitedwaynwvt.org

UWNWVT of Northwest (UWNWVT) is the recipient of the Vermont Prevention Center of Excellence (PCE) grant awarded through the Vermont Division of Alcohol and Drug Abuse Programs (ADAP) with federal funds from Department of Health & Human Services and SAMHSA State Opioid Response.

The goal the PCE grant is to reduce the onset and prevalence of substance misuse among youth and young adults in Vermont through by supporting substance use prevention capacity and infrastructure at the community and regional levels through subgrants to local community organizations.

UWNWVT's PCE subgrants will focus on one or more of the following priorities:

- **Priority populations:** Programs and activities serving priority populations (based on regional data showing disparities in outcomes, risks, and protective factors), specifically: youth and young adults who identify as BIPOC or LGBTQ and those from households with limited financial means.
- **Retail Cannabis:** Subgrants to support activities and initiatives focused on helping communities and families prepare for Retail Cannabis.
- **Youth Voice:** Activities and initiatives focused on amplifying Youth & Young Adult Voice in design and planning of prevention programs and activities and in the operations of the Regional Network.

SUBGRANT PARAMETERS & REQUIREMENTS

PCE subgrants must meet each of the criteria outlined in sections A – E below.

- A. PCE subgrants must support work that:
 - focuses on prevention of substance misuse among youth and/or young adults,
 - addresses prevention efforts focused on 1 or more levels of VT Prevention Model: Policies & Systems, Community, Organizations, Relationships, Individual. For more information see: https://www.healthvermont.gov/sites/default/files/documents/pdf/ADAP_Prevention%20Program%20Overview.pdf
 - will be completed by end of the PCE grant period (September 2022; also see E. below for reporting timeline).
 - adheres to any applicable COVID-19-related health and safety guidance issued or supported by the Vermont Department of Health.
- B. Activities supported by PCE subgrants must be part of a larger strategy that follows the 5 steps of the Strategic Prevention Framework (SPF): assessing local need, building capacity to address the needs, identifying evidence-based practices, or promising innovations, implementing the selected strategies, and evaluating the process and outcomes of the implemented strategy.
For more information see: <https://www.samhsa.gov/sites/default/files/20190620-samhsa-strategic-prevention-framework-guide.pdf>
- C. Due to federal funding restrictions, PCE subgrants cannot be used to:
 - supplant existing funds; federal funds must be funding of last resort for the proposed activities.
 - duplicate existing services or activities already supported by funding from ADAP.
 - support a single, isolated activity that is not connected to a larger prevention strategy.

- pay for food, meals, volunteer stipends, or incentives. (Note: food is an allowable expense if limited to \$3 per person.)
- D. PCE funds may be used to support any of the following expenses related to prevention work: **staffing, materials and supplies, space, and communications and outreach**. Any other proposed use of funds must be pre-approved by UWNWVT and ADAP.
- E. Organizations receiving subgrants must be able to update UWNWVT regarding progress on the funded activities by August 2022 and must be able to submit by end of September 2022 a final report describing use of funds and scope and impact of the activities supported by the subgrant. Any funds not used by end of September must be returned to UWNWVT (in order for UWNWVT to be in compliance with federal grant restrictions).

SUBGRANT INFORMATION

All funded projects must be complete and all funds expended by no later than September 30, 2022.

Anticipated total funds available through UWNWVT-PCE grant awards are \$90,000.

REQUEST FOR FUNDING

To request up to \$10,000 in subgrant funding, the invited organization should submit a brief request via email to **Megan at UWNWVT** (megan@unitedwaynwvt.org).

Questions include:

- Organization requesting funds
- Contact person
- Amount of funds requested (up to \$10,000)
- Activity to be supported (short title, then brief description)
- Description of proposed use of funds
- Budget for use of funds (may include up to 10% overhead)
- Which levels of the Vermont Prevention Model does the activity address? (Check all that apply)
 - Policies and Systems
 - Community
 - Organizations
 - Relationships
 - Individual
- Who is meant to benefit from the proposed activity? Please give a brief description of the target population (e.g., youth, young adults, families, providers, other), town(s) in which activity or service will be offered, and any defining characteristics of this population.
- Indicate if the proposed activity focuses on any of the following populations of youth and/or young adults (check all that apply or N/A if not applicable to this activity).
 - Has the activity been selected or developed through the process outlined in the Strategic Prevention Framework? (Yes/No/Not Sure) If not sure, provide a brief description of how the organization decided to implement this activity.
 - If additional funding were to become available (beyond the \$10,000 limit specified in this invitation), would your organization be interested in and able to use additional funds to support prevention programs or activities within the parameters outlined here? (Yes/No/Not Sure; and a comment box)
 - Affirmations from organization requesting funds; indicate agreement with each of the following statements:

- I have reviewed the funding invitation carefully and understand the funding parameters.
- The requested funds will not supplant other available funds (i.e., organization does not have other funding to support the proposed work).
- The proposed activities for which the organization is requesting PCE subgrant funding will not duplicate work the organization is doing that is already funded by ADAP.
- The proposed work will be completed fully (and all subgrant funds expended) by September 2022.
- The organization will be able to report on progress and status of the proposed work in August 2022.
- The organization can accept and manage federal funds through this subgrant, will comply with any relevant restrictions for use of federal funds, and will request clarification from UWNWVT if needed at any time. (For more information regarding federal funding through ADAP, see: <https://www.healthvermont.gov/alcohol-drugs/grants-contracts>.)
- All activities supported by these funds will follow current COVID protocols defined by the VT Department of Health
- We will keep UWNWVT updated on progress as well as any barriers to completing the work as proposed and/or requests for adjustments to the proposed work, timeline, or use of funds.

SUBGRANT TIMELINE

- March - May 2022: Award subgrants
- August 2022: Check-in with grantees about use of funds
- September 30, 2022: Projects must be completed and all funds expended
- October 2022: Final report due

FINAL REPORT

Questions will include:

- Describe service area of project
- Report which priority youth and young adult population(s) focus where selected: LGBTQ+; BIPOC; low income
- Describe success and/or challenges reaching the priority population(s)
- Did your project serve individuals (as opposed to building capacity, tools, or other prevention infrastructure)? If yes, provide total number of individuals reached or served. If you do not know the exact number, provide an estimate.
- Age categories of total number of individuals reached or served (under 12), (12-14), (15-17), (18-24), (Unknown)
- Describe successes/challenges of project