



**CHITTENDEN COUNTY RPC**  
*Communities Planning Together*

# **Transportation Improvement Program for Fiscal Years 2020-2023**

**Adopted July 17, 2019**

Chittenden County Regional Planning Commission  
110 West Canal Street, Suite 202  
Winooski, VT 05404  
(802) 876-4490 / (802) 846-4494(fax)  
[www.ccrpcvt.org](http://www.ccrpcvt.org)

## TABLE OF CONTENTS

### Section 1:

A. Introduction	p. 1
B. Financial Plan	p. 2
C. Performance Management	p. 2
D. TIP Adoption Resolution	p. 5
E. Glossary	p. 6
F. TIP Map	p. 9

### Section 2:

FY2020-2023 TIP: Projects by Municipality	p. 1
---	------

### Section 3:

Summary of Funding Amounts	
1. FY2020-2023 TIP Funding: By Project Use Category	p. 1
2. FY2020-2023 TIP Funding: By Federal Funding Source and Fiscal Constraint Status	p. 2
3. CCRPC FY2020-2023 TIP: Funding by Project Use Category	p. 3
4. CCRPC FY2020-2023 TIP: Funding Uses by Year	p. 4
5. Federal Funds Actually Obligated in In Chittenden County: FY2009-2018	p. 5

## A. Introduction

The Chittenden County Transportation Improvement Program (TIP) for fiscal years 2020 through 2023 is a prioritized, fiscally-constrained, and multi-year list of federally-funded, multimodal transportation projects and operations in the Chittenden County Regional Planning Commission (CCRPC) region - Chittenden County. As a federally designated Metropolitan Planning Organization (MPO), CCRPC must prepare a TIP which must cover at least a 4-year program of projects and be updated no less frequently than every 4 years. In addition, projects in the TIP must be prioritized at the regional level and have clearly identified funding sources. All transportation projects, programs, and operations receiving federal funds in Chittenden County must be authorized through the CCRPC TIP process. The exceptions are federal airport funds for Burlington International Airport, which are not subject to the CCRPC's prioritization process, but are listed in the TIP for information and coordination purposes.

- The TIP authorizes the implementing agency (e.g., Vermont Agency of Transportation (Trans), Green Mountain Transit (GMT)) to obligate federal funds for listed projects and operations over the next four federal fiscal years (October 1, 2019 through September 30, 2023).
- The first year of a duly-adopted and approved TIP constitutes an "agreed to" list of projects for project selection purposes, provided that anticipated federal funds available to the region are available during that year.
- The U.S. Department of Transportation (DOT) must find that the TIP is based on a continuing, comprehensive transportation planning process carried out cooperatively by the State, the CCRPC, and transit operators.

## **B. Financial Plan**

### **▸ Federal Funding**

The majority of TIP projects are funded with 80 percent federal funds. However, in some cases federal amounts may vary such as with interstate projects, which can be funded with 90 percent federal funds, and some transit projects, which may be funded with 50 percent federal funds. There is a column on the right side of the TIP document that indicates the percentage shares of federal, state and local funding.

### **▸ State Funding**

The State of Vermont maintains a State Transportation Fund to pay for transportation programs and projects. State matching funds for TIP projects would most likely come from this fund. The fund is primarily supported by revenue collected from the motor fuel tax on gasoline and diesel and purchase and registration fees for motor vehicles.

State transportation resources are allocated through the state legislature's annual capital and budgetary process and are identified in the Transportation Capital Program. State transportation funding allocated to projects and programs in Chittenden County is determined through this process, in consultation with the CCRPC.

### **▸ Local Funding**

Sources of local matching funds come primarily from the property tax and are approved by each municipality in their annual budgeting process.

### **▸ Operation and Maintenance**

Operations and maintenance of the Federal Aid Highway System in Chittenden County is conducted by VTrans and funding amounts are identified in the State Transportation Improvement Program (STIP).

GMT has an estimated Operations and Maintenance budget for transit services in FY20 of \$14,318,404. Revenue sources for transit operations and maintenance are as follows:

Passenger revenue	\$2,497,500
Purchase of service	\$43,844
Local funding	\$3,336,480
State funding	\$2,263,536
Federal grants	\$6,151,844
<u>Misc revenue</u>	<u>\$25,200</u>
Total Revenue	\$14,318,404

## **C. Performance Management**

### **▸ Transportation Performance Measures Overview**

The Moving Ahead for Progress in the 21<sup>st</sup> Century (MAP-21) Act of 2012 directed the U.S. Department of Transportation to establish a set of Performance Measures to increase the accountability and transparency of the federal highway and transit programs and improve project decision-making through performance-based planning and programming. The Fixing America's Surface Transportation Act (FAST Act) of 2015 continued the performance management and performance-based planning and programming requirements of MAP-21 with minor changes.

MAP-21 and FAST ACT require incorporation of performance-based planning and programming in the development of MPO long-range transportation plans and TIPs. The federal regulations also require the TIP to include, to the maximum extent practicable, a description of the anticipated effect of the TIP toward achieving the established performance measures targets.

CCRPC recognizes the importance of linking investment priorities to stated performance objectives, and that establishing this link is critical to the achievement of national transportation goals and statewide and regional performance targets. CCRPC works with the VTrans and GMT – transit provider in the MPO area – to carry out performance-based planning as outlined in federal rules. This planning process reflects the goals and objectives of regional and state plans including the *CCRPC ECOS Regional Plan*, which incorporates the *Metropolitan Transportation Plan*, the *2040 Vermont Long-Range Transportation Plan*, the *Vermont Strategic Highway Safety Plan*, the *VTrans Transportation Asset Management Plan*, and the *GMT Transit Asset Management Program (TAMP)*.

VTrans, CCRPC and other stakeholders collaborated to develop statewide Performance targets for the Safety, Pavement Condition, Bridge Condition, Travel Time Reliability and Freight Movement Performance Measures. The CCRPC voted to accept the state Performance targets and support them through programming of the TIP. GMT, in collaboration with CCRPC and VTrans, developed Transit performance targets for transit asset conditions and state of good repair. GMT's program for satisfying their performance targets are detailed in the most recent *TAMP*, approved November 2018. The *TAMP* uses the condition of assets to guide the optimal prioritization of funding to keep the transit system in a state of good repair.

TIP projects are anticipated to contribute positively to the overall MPO and statewide safety, asset management, and transit performance targets as discussed below.

## **Transportation Performance Measures**

**Safety** – The safety performance goal seeks to achieve a significant reduction in traffic fatalities and serious injuries on public roads. The FY2020-2023 TIP includes over \$49 million for improvements at 13 High Crash Locations in the county. The TIP also includes over \$5.4 million for separated paths and sidewalk projects that will improve safety for pedestrian and bicyclists. The safety performance measures are listed below.

- Number of Fatalities
- Rate of Fatalities
- Number of Serious Injuries
- Rate of Serious Injuries
- Number of Non-Motorized Fatalities and Serious Injuries

**Infrastructure Condition** – The infrastructure condition performance goal seeks to maintain the highway infrastructure system in a state of good repair. The FY2020-2023 TIP includes over \$24 million for paving projects and \$18 million for bridge preservation projects. The infrastructure condition performance measures are listed below.

- **Pavement Condition**
  - Percentage of pavements on the Interstate in good condition

- Percentage of pavements on the Interstate in poor condition
- Percentage of pavements on the non-Interstate National Highway System (NHS) in good condition
- Percentage of pavements on the non-Interstate National Highway System (NHS) in poor condition
- **Bridge Condition**
  - Percentage of NHS bridges in good condition
  - Percentage of NHS bridges in poor condition
- Percent of revenue vehicles that have met or exceeded their useful life
- Percentage of non-revenue vehicles and equipment that have met or exceeded their useful life

**Congestion** -- *Not required because Vermont does not exceed national air quality standards*

**National Highway System Reliability** – The system reliability goal seeks to improve the efficiency of the surface transportation system. The FY2020-2023 TIP includes projects in the categories of intelligent transportation systems and traffic operations that improve the operations of existing infrastructure. It also includes improvements at four interstate interchanges, Exit 12, Exit 14, Exit 16 and Exit 17, to improve access in the vicinity of I-89.

- Interstate travel time reliability
- Non-Interstate NHS travel time reliability
- Freight reliability measure (truck travel time)

**Transit Asset Management** – The transit asset management goal seeks to maintain transit assets in a state of good repair. The FY2020-2023 TIP includes \$52.7 million for transit projects including bus and van replacements, bus facility upgrades and transit services. The transit performance measures are listed below.

CHITTENDEN COUNTY REGIONAL PLANNING COMMISSION  
A Resolution to Adopt the FY2020-2023  
TRANSPORTATION IMPROVEMENT PROGRAM

WHEREAS, the Chittenden County Regional Planning Commission, as the designated Metropolitan Planning Organization for Chittenden County, Vermont, is responsible for the operation and maintenance of a continuing transportation planning process designed to prepare and adopt transportation plans and programs; and

WHEREAS, a fiscally constrained Transportation Improvement Program containing transportation improvements expected to be carried out in the period October 1, 2019 through September 30, 2023 has been prepared through the planning process; and

WHEREAS, the Chittenden County Regional Planning Commission's Transportation Advisory Committee found the projects contained in the proposed TIP to be in conformance with the duly adopted Metropolitan Transportation Plan and has recommended the fiscally constrained 2020-2023 Transportation Improvement Program to the Chittenden County Regional Planning Commission for adoption; and

WHEREAS, the Chittenden County Regional Planning Commission sent copies of the proposed TIP to the eighteen member municipalities for the review and comment period on June 21, 2019; and

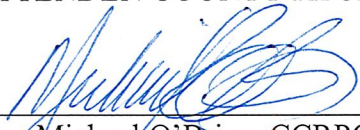
WHEREAS, the Chittenden County Metropolitan Planning Organization held a public hearing in the CCRPC offices in Winooski on Wednesday, July 17, 2019 to review the proposed Transportation Improvement Program after publishing a legal notice in the *Burlington Free Press* on June 21, 2019;

NOW, THEREFORE, BE IT RESOLVED that the Chittenden County Regional Planning Commission, as the Metropolitan Planning Organization, hereby adopts the fiscally constrained 2020-2023 Transportation Improvement Program attached hereto and made a part hereof.

RESOLVED, PASSED AND ADOPTED THIS 17th DAY OF JULY 2019.

CHITTENDEN COUNTY REGIONAL PLANNING COMMISSION

By

  
\_\_\_\_\_  
Michael O'Brien, CCRPC CHAIR

## GLOSSARY

<b>ADA</b>	Americans with Disabilities Act of 1990. Federal legislation prohibiting discrimination on the basis of disability.	<b>FAA</b>	Federal Aviation Administration. The USDOT agency responsible for aviation related programs.
<b>Adaptive Signal Control</b>	Adaptive signal control technology adjusts the timing of red, yellow and green lights to accommodate changing traffic patterns and ease traffic congestion.	<b>FAST Act</b>	The Fixing America's Surface Transportation (FAST) Act is five-year legislation to improve the Nation's surface transportation infrastructure, including our roads, bridges, transit systems, and rail transportation network. The act was passed in 2015.
<b>AIP</b>	Airport Improvement Program. FAA program that assists the development of public-use airports by providing funding for airport planning and development projects.	<b>FHWA</b>	Federal Highway Administration. The USDOT agency responsible for roadway related programs.
<b>BTV</b>	Burlington International Airport	<b>FRA</b>	Federal Railroad Administration. The USDOT agency responsible for railroad programs.
<b>CCRPC</b>	Chittenden County Regional Planning Commission. The county's comprehensive planning organization. Established under state law. CCRPC also acts as the Metropolitan Planning Organization for Chittenden County. The MPO is established under federal law and responsible for transportation planning and programming within its jurisdiction.	<b>FTA</b>	Federal Transit Administration. The USDOT agency responsible for public transportation programs.
<b>CIRC Alternative Project</b>	A program of projects to implement the purpose and need that the CIRC highway was originally intended to address. In 2011 the Governor announcement that the Chittenden County Circumferential Highway – as originally conceived - would not be built.	<b>FTA Section 5307</b>	The Urbanized Area Formula Funding program makes federal resources available to urbanized areas and to governors for transit capital and operating assistance in urbanized areas and for transportation-related planning. An urbanized area is an incorporated area with a population of 50,000 or more.
<b>CMAQ</b>	Congestion Mitigation and Air Quality Improvement Program. Federal funding program designed to address congestion and air quality issues through capital and operating projects.	<b>FTA Section 5309</b>	FTA program that provides funding to states and transit agencies to replace, rehabilitate and purchase buses and related equipment and to construct bus-related facilities.
<b>CCTA</b>	Chittenden County Transportation Authority. The former name of region's public transportation provider. In 2016 CCTA merged with Green Mountain Transit Authority and changed their name to Green Mountain Transit (GMT)	<b>FTA Section 5310</b>	FTA program that provides formula funding to states and local governments to meet the transportation needs of older adults and people with disabilities. Funds are apportioned based on each state's share of the population for these two groups.
<b>CON</b>	Construction. Project development phase in which the project is implemented.	<b>FTA Section 5311</b>	FTA program that provides capital, planning, and operating assistance to states to support public transportation in rural areas with populations less than 50,000.
<b>DDI</b>	Diverging diamond interchange. DDI is a new type of diamond interchange that increases capacity and reduces congestion.	<b>FTA Section 5312</b>	FTA program that provides funding to develop innovative products and services assisting transit agencies in better meeting the needs of their customers.

## GLOSSARY

<b>FTA Section 5339</b>	FTA funding program that provides capital funding to replace, rehabilitate and purchase buses and related equipment and to construct bus related facilities. Funding is provided through formula allocations and competitive grants.	<b>NHPP</b>	National Highway Preservation Program. The NHPP provides support for the condition and performance of the National Highway System (NHS), for the construction of new facilities on the NHS, and to ensure that investments of Federal-aid funds in highway construction are directed to support progress toward the achievement of performance targets established in a State's asset management plan for the NHS.
<b>GMT</b>	Green Mountain Transit. The region's public transportation provider.		
<b>HSIP</b>	Highway Safety Improvement Program (HSIP). A data-driven, strategic approach to improving highway safety on all public roads that focuses on performance.	<b>NHS</b>	National Highway System. The NHS includes the Interstate Highway System as well as other roads important to the nation's economy, defense, and mobility. The NHS was developed by the Department of Transportation in cooperation with the states, local officials, and metropolitan planning organizations.
<b>ISTEA</b>	Intermodal Surface Transportation Efficiency Act of 1991. Federal legislation emphasizing innovation, intermodalism, and flexibility. The Act authorized \$151 billion over 6 years.	<b>Para-transit</b>	A demand-response transportation system catering to special needs populations such as the elderly and disabled.
<b>ITS</b>	Intelligent Transportation Systems. The application of technology to improve transportation system efficiency.	<b>PE</b>	Preliminary Engineering. Project development phase in which project design is determined.
<b>LTAP</b>	Local Technical Assistance Program. A national non-profit effort financed jointly by the Federal Highway Administration and individual State Departments of Transportation. Its purpose is to provide road and bridge know-how to municipal people involved with highways. There are LTAP Centers in 50 states and Puerto Rico and seven Native American locations. Vermont's program is called Vermont Local Roads.	<b>Round-about</b>	Non-signalized circular intersection with specific design and traffic control features to ensure low travel speeds and efficient traffic movement.
<b>MAB</b>	Municipal Assistance Bureau. VTrans program established to assist local governments with project implementation.	<b>ROW</b>	Right-of-Way. A phase in the project development process that determines if land rights are needed for construction of a transportation project and negotiates the appropriate compensation.
<b>MAP-21</b>	The Moving Ahead for Progress in the 21st Century Act (MAP-21) was a funding and authorization bill to govern United States federal surface transportation spending. It was passed by Congress on June 29, 2012.	<b>SAFETEA-LU</b>	Safe, Accountable, Flexible, Efficient Transportation Equity Act: A Legacy for Users (SAFETEA-LU). This act was passed in August 2005 as the successor to the Transportation Efficiency Act for the 21st Century (TEA-21). The Act added new safety programs, with an emphasis on transportation security.
<b>MPO</b>	Metropolitan Planning Organization. Federally established organization responsible for a cooperative, continuous, and comprehensive framework to make transportation investment decisions within their designated area. CCRPC is the designated MPO for Chittenden County.	<b>Safety Program</b>	Under Sections 154 and 164 of the US Code penalty funds for Open Container and Repeat Offender Laws may be used for Highways Safety Improvement Program (HSIP) eligible activities.

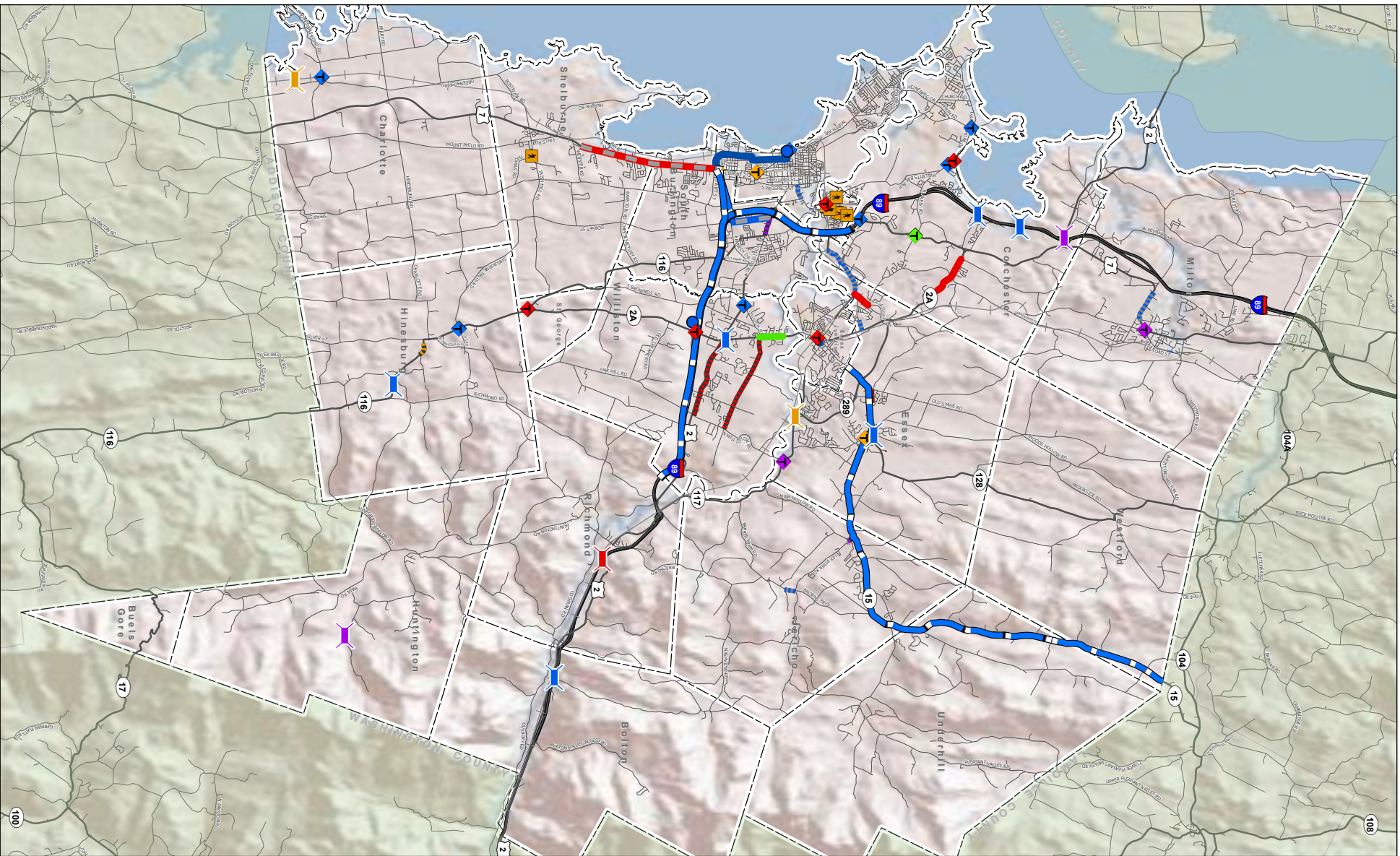


## GLOSSARY

<b>Scoping</b>	A phase in the project development process that moves a recognized problem from an idea through the development of alternatives and environmental screening.	<b>TDM</b>	Transportation Demand Management. The general term for strategies that result in more efficient use of transportation resources.
<b>Shared Use Path</b>	A path separated from vehicle traffic by barrier or open space usually on its own right-of-way.	<b>TEA 21</b>	Transportation Equity Act for the 21st Century (TEA-21) replaced ISTEA to guide federal expenditures for surface transportation in 1999. The Act authorized new flexible programs and increased authorized funding to \$198 billion over 6 years.
<b>SSTA</b>	Special Services Transportation Agency. Chittenden County based non-profit paratransit provider.	<b>TIP</b>	Transportation Improvement Program. The four year list of fiscally constrained transportation projects planned for implementation in the region.
<b>STIP</b>	Statewide Transportation Improvement Program. The State's four year list of fiscally constrained transportation projects planned for implementation statewide.	<b>TOD</b>	Transit Oriented Design. High density and mixed use land development around transit system stops.
<b>STP</b>	Surface Transportation Program. Federal program providing flexible funding for projects on any Federal-aid highway, including the NHS, bridge projects on any public road, transit capital projects, and bus facilities.	<b>Traffic Calming</b>	A combination of measures to reduce the negative effects of vehicle use or to alter driver behaviors.
<b>TAP</b>	The Transportation Alternatives Program (TAP) provides funding for transportation alternatives, including pedestrian and bicycle facilities, improving non-driver access to public transportation, safe routes to school projects, and recreational trails.	<b>TSM</b>	Transportation Systems Management. Relatively low-cost improvements to improve transportation efficiency such as ITS applications or roundabouts.
<b>TCSP</b>	Transportation, Community and System Preservation Program. Federal program that provides funding for planning grants, implementation grants, and research to investigate and address the relationships between transportation, community and system preservation.	<b>USDOT</b>	United States Department of Transportation
		<b>VTrans (or VAOT)</b>	Vermont Agency of Transportation

# Transportation Improvement Program FY 2020 - 2023

Chittenden County, Vermont



- ### Project Type
- Bridge/Culvert Work
  - Intermodal Facility
  - Intersection Improvement
  - Pedestrian Crossing
  - Corridor Improvement
  - Paving
  - Pedestrian/Bike Project
  - Signal Upgrades

### Project Construction

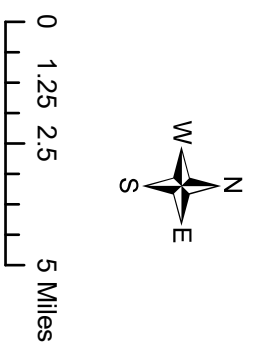
FY 2020

FY 2021

FY 2022

FY 2023

Year Not Determined



Sources:  
Project data - updated May 2019 by CCRPC.  
Basemap - ESRI's Terrain

Disclaimer:  
The accuracy of information presented is determined by its sources. Errors and omissions may exist. The Chittenden County Regional Planning Commission is not responsible for these. Questions or on-the-ground location can be resolved by site inspections and/or surveys by registered surveyor. This map is not sufficient for delineation of features on-the-ground. This map identifies the presence of features, and may indicate relationships between features, but is not a replacement for surveyed information or engineering studies.

NOTE: Once official, this data can also be viewed on the ECOS Map Viewer at:  
<http://map.ccrpc.org/chittendencountyvt>



---

---

## Section 2: FY2020–2023 TIP: Projects by Municipality

---

---

# 2020-2023 CCRPC Transportation Improvement Program

Adopted July 17, 2019

CCRPC # Project Location	FY20-23 Federal Funds				Other Project Information					
	FY20 Phase	FY21 Phase	FY22 Phase	FY23 Phase	Total Cost fed+state+local in 2019 Dollars	Fed. Funds Obligated Thru FY18	FY19 Fed Funds Phase	Project Use Category	Federal Funding Source	Remarks
<b>Burlington</b>										
RR007 <b>Burlington Train Station Platform</b>	\$880,000 CON				Total: \$1,803,814 PE: \$178,814 ROW: CON: \$1,625,000		\$96,600 PE	Rail	TIGER VII  54 % Federal 46 % State 0 % Local	Modify Burlington train station platform to accommodate AMTRAK service.
VTrans Number: PLAT(3)					VTrans PM: Libby, Paul					
BP078 <b>Champlain Elementary Pedestrian Crossing Improvements</b>					Total: \$504,000 PE: \$104,000 ROW: \$5,000 CON: \$395,000	\$84,323	\$330,000 CON	Bike/ Pedestrian	STP  80 % Federal 10 % State 10 % Local	2013 Bike/Ped award (\$394,860) for construction of 365 feet of sidewalk and improved crossings on Birchcliff Parkway and Locust Street.
Birchcliff and Locust VTrans Number: STP BP13(6)					Funds to be obligated in FY19 VTrans PM: Robertson, Scott					
HC001A <b>Champlain Parkway - US7 to Main Street</b>	\$13,222,501 CON	\$10,594,088 CON	\$5,082,460 CON		Total: PE: ROW: CON: \$29,483,558		\$10,274,185 PE/CON	New Facility/ Major Roadway Upgrade	STP  95 % Federal 3 % State 2 % Local	PE and ROW included under HC001E.
US7 to Main Street VTrans Number: MEGC-M 5000(1)					VTrans PM: Bohl, Tina					
HP140 <b>Class 1 Paving</b>	\$200,000 PE		\$6,658,560 CON		Total: \$8,250,000 PE: \$250,000 ROW: CON: \$8,000,000			Paving	NHPP  80 % Federal 20 % State 0 % Local	
US2, US7, and US7 Alt VTrans Number: NH PC22(1)					New VTrans PM: Bogaczyk, Matthew					

\* Future project costs escalated at a rate of 2% per year.

CCRPC # Project Location	FY20-23 Federal Funds				Other Project Information					
	FY20 Phase	FY21 Phase	FY22 Phase	FY23 Phase	Total Cost fed+state+local in 2019 Dollars	Fed. Funds Obligated Thru FY18	FY19 Fed Funds Phase	Project Use Category	Federal Funding Source	Remarks
BP092A <b>Colchester Avenue Sidepath - Phase I</b>  East Avenue to Mansfield Avenue <b>VTrans Number:</b> STP SDWK(19)	\$121,150 CON				Total: \$275,437 PE: \$77,000 ROW: \$5,000 CON: \$193,437	\$87,200	\$168,350 PE/ROW/CON	Bike/ Pedestrian	STP  80 % Federal 0 % State 20 % Local	2014 Sidewalk grant (100,000), 2015 Sidewalk grant (\$108,350), to construct 1,625 feet of 10-ft wide path.  <b><u>VTrans PM:</u></b> Kaplan, Jon
BP092B <b>Colchester Avenue Sidepath - Phase II</b>  Mansfield Avenue to South Prospect Street <b>VTrans Number:</b> STP BP15(7)	\$77,840 CON				Total: \$96,000 PE: ROW: CON: \$96,000		\$77,840 CON	Bike/ Pedestrian	STP  80 % Federal 10 % State  10 % Local	2015 Bike/Ped grant (\$77,840) for 385 feet of shared use path. Design completed with project BP092A.  <b><u>VTrans PM:</u></b> Kaplan, Jon
BP090 <b>North Avenue Crosswalks</b>   <b>VTrans Number:</b> TAP TA15(1)					Total: \$318,788 PE: \$56,000 ROW: \$10,000 CON: \$252,788	\$234,759	\$180,316 CON	Bike/ Pedestrian	STP  80 % Federal 0 % State 20 % Local	2015 Transportation Alternatives award (\$220,316) to construct 5 pedestrian crossings of North Avenue.  <b><u>VTrans PM:</u></b> Robertson, Scott
RR006 <b>Rail Crossing Safety Improvements - College Street</b>  <b>VTrans Number:</b> STP 2035(15)	\$1,017,000 CON				Total: \$1,250,484 PE: \$120,484 ROW: CON: \$1,130,000	\$44,000	\$1,035,000 CON	Safety/ Traffic Operations/ ITS	Section 130 Rail Grade Crossing  90 % Federal 10 % State 0 % Local	<b><u>VTrans PM:</u></b> Libby, Paul
HC015 <b>Railyard Enterprise Project</b>  Waterfront South Area <b>VTrans Number:</b> BREP(2)					Total: \$11,500,000 PE: \$1,200,000 ROW: \$300,000 CON: \$10,000,000	\$540,000		New Facility/ Major Roadway Upgrade	STP  80 % Federal 0 % State 20 % Local	Multimodal transportation infrastructure improvements between the Pine Street corridor and the Burlington Waterfront South area.  <b><u>VTrans PM:</u></b> Perrigo, Joel

\* Future project costs escalated at a rate of 2% per year.

CCRPC # Project Location	FY20-23 Federal Funds				Other Project Information					
	FY20 Phase	FY21 Phase	FY22 Phase	FY23 Phase	Total Cost fed+state+local in 2019 Dollars	Fed. Funds Obligated Thru FY18	FY19 Fed Funds Phase	Project Use Category	Federal Funding Source	Remarks
HP085 <b>Shelburne Street Roundabout</b>		<b>\$1,020,000</b> CON	<b>\$4,681,800</b> CON	<b>\$1,756,299</b> CON	Total: \$8,175,000 PE: \$910,000 ROW: \$110,000 CON: \$7,155,000	\$730,000	\$240,000 PE/ROW	Safety/ Traffic Operations/ ITS	Safety  100 % Federal 0 % State  0 % Local	Construction of a roundabout, drainage and associated work.          <b><u>VTrans PM:</u></b> LaCroix, Mike
Shelburne St/South Willard St/St. Paul St <b>VTrans Number:</b> HES 5000(18)										
OT035 <b>Stormwater Management Improvements on Main Street</b>	<b>\$450,597</b> CON				Total: \$593,750 PE: ROW: CON: \$593,750	\$24,043		Stormwater/ Environmental	STP  80 % Federal 0 % State 20 % Local	Municipal Highway and Stormwater Mitigation Program award (\$475,000)          <b><u>VTrans PM:</u></b> Robertson, Scott
<b>VTrans Number:</b> STP MM18(8)										
HP141 <b>US7 Concrete Pavement Repair</b>	<b>\$200,000</b> PE	<b>\$816,000</b> CON			Total: \$1,250,000 PE: \$250,000 ROW: CON: \$1,000,000			Paving	NHPP  80 % Federal 0 % State 20 % Local	          <b><u>VTrans PM:</u></b> Bogaczyk, Matthew
MM 0.093 to MM 0.22 <b>VTrans Number:</b> NH PC21(1)			New							
<b>Burlington Int. Airport</b>										
AV002 <b>Airfield Projects</b>	<b>\$4,777,778</b>	<b>\$3,000,000</b>	<b>\$3,911,111</b>	<b>\$4,702,000</b>	Total: PE: ROW: CON:		\$11,500,000	Aviation	AIP  90 % Federal 6 % State 4 % Local	Rehabilitate customs/cargo apron; new glycol treatment system; mill and overlay runway asphalt; taxiway B extension. BTV project - for information only.          <b><u>VTrans PM:</u></b> Air
<b>VTrans Number:</b>										

\* Future project costs escalated at a rate of 2% per year.

CCRPC # Project Location	FY20-23 Federal Funds				Other Project Information					
	FY20 Phase	FY21 Phase	FY22 Phase	FY23 Phase	Total Cost fed+state+local in 2019 Dollars	Fed. Funds Obligated Thru FY18	FY19 Fed Funds Phase	Project Use Category	Federal Funding Source	Remarks
AV025 Development Property Acquisiton	\$400,000				Total:			Aviation	AIP	BTV project -- for information only.
					PE:					
					ROW:				90 % Federal	
					CON:				6 % State	
VTrans Number:									4 % Local	<u>VTrans PM:</u>
AV005 Noise Mitigation Implementation	\$2,000,000	\$2,000,000	\$2,200,000	\$2,000,000	Total:		\$1,870,000	Aviation	AIP	Noise mitigation. BTV project - for information only.
					PE:					
					ROW:				90 % Federal	
					CON:				6 % State	
VTrans Number:									4 % Local	<u>VTrans PM:</u> Air
AV022 Planning and Environmental Studies	\$500,000				Total:			Aviation	AIP	Aiport Master Plan. BTV project - for information only.
					PE:					
					ROW:				90 % Federal	
					CON:				6 % State	
VTrans Number:									4 % Local	<u>VTrans PM:</u> Air
AV018 Security Projects	\$1,500,000				Total:			Aviation	AIP	Upgrade security system, national security random check requirements. BTV project - for information only.
					PE:					
					ROW:				90 % Federal	
					CON:				6 % State	
VTrans Number:									4 % Local	<u>VTrans PM:</u> Air
AV003 Terminal Apron Projects	\$4,000,000	\$4,000,000			Total:			Aviation	AIP	Terminal apron upgrades. BIA project - for information only.
					PE:					
					ROW:				90 % Federal	
					CON:				6 % State	
VTrans Number:									4 % Local	<u>VTrans PM:</u> Air

\* Future project costs escalated at a rate of 2% per year.



CCRPC # Project Location	FY20-23 Federal Funds				Other Project Information					
	FY20 Phase	FY21 Phase	FY22 Phase	FY23 Phase	Total Cost fed+state+local in 2019 Dollars	Fed. Funds Obligated Thru FY18	FY19 Fed Funds Phase	Project Use Category	Federal Funding Source	Remarks
AV020 Terminal Building Expansion					Total:			Aviation	AIP	BTV to submit a grant application in FY21 for \$25 million to FAA. BTV project - for information only.
					PE:					
					ROW:				% Federal	
					CON:				% State % Local	
VTrans Number:										<u>VTrans PM:</u> Air
Charlotte										
RR008 Charlotte Rail Bridge over Thorp Brook					Total:	\$575,000		Rail	State	Rehab bridge 252.7 over Thorp Brook. State funds only. Construction in 2021.
					PE:	\$125,000				
					ROW:				0 % Federal	
					CON:	\$450,000			100 % State 0 % Local	
VTrans Number: VTRY(15)				State funds only						<u>VTrans PM:</u> Martineau, Joshua
RR009 Rail Crossing Improvements at Thompson Point Road	\$135,000 CON				Total:	\$200,000		Safety/ Traffic Operations/ ITS	Section 130 Rail Grade Crossing	
					PE:	\$50,000				
					ROW:				90 % Federal	
					CON:	\$150,000			10 % State 0 % Local	
VTrans Number: STP 2035(23)										<u>VTrans PM:</u> Gardner, Cos
HP131 US7/Ferry Road Traffic Signal Upgrade					Total:	\$428,619	\$30,000	Roadway Corridor Improvement	STP	Traffic signal system upgrade to include new mast arms, TS 2 cabinet with controller, stop bar detection and retroreflective back plates.
					PE:	\$70,000				
					ROW:				100 % Federal	
					CON:	\$358,619			0 % State 0 % Local	
VTrans Number: NHG SGNL(49)				Funds to be obligated in FY19						<u>VTrans PM:</u> Sisson, Taylor

\* Future project costs escalated at a rate of 2% per year.

CCRPC # Project Location	FY20-23 Federal Funds				Other Project Information					
	FY20 Phase	FY21 Phase	FY22 Phase	FY23 Phase	Total Cost fed+state+local in 2019 Dollars	Fed. Funds Obligated Thru FY18	FY19 Fed Funds Phase	Project Use Category	Federal Funding Source	Remarks
<b>Colchester</b>										
HP139 Bayside Intersection Roundabout and Stormwater Improvements					Total:			Safety/ Traffic Operations/ ITS		Single lane roundabout and drainage improvements. Illustrative project pending availability of federal funds.
					PE:					
					ROW:				% Federal	
VTrans Number:		Illustrative			CON: \$3,310,000				% State	
									% Local	<b><u>VTrans PM:</u></b>
HP119 Blakely Road/Laker Lane Intersection Improvements	\$400,000 CON				Total: \$685,000	\$121,620	\$525,000 CON	Safety/ Traffic Operations/ ITS	STP	CIRC Alt Phase III project.
					PE: \$160,000					
					ROW: \$25,000				80 % Federal	
VTrans Number: STP 5600(21)		CIRC Alternative Project			CON: \$484,000				0 % State	
									20 % Local	<b><u>VTrans PM:</u></b> Perrigo, Joel
HP102 Exit 16 Improvements	\$500,000 CON	\$4,794,000 CON	\$2,965,140 CON		Total: \$10,500,000	\$1,250,000	\$250,000 ROW	Roadway Corridor Improvement	Safety	CIRC Alt Phase I project. Construction of a diverging diamond and improvements at Mountain View Dr., Hercules Dr. and Rathe Rd.
					PE: \$2,100,000				100 % Federal	PE included \$200,000 in Section 164 funds.
					ROW: \$350,000				0 % State	
VTrans Number: HES NH 5600(14)		CIRC Alternative Project			CON: \$8,050,000				0 % Local	<b><u>VTrans PM:</u></b> LaCroix, Mike
BR050 Exit 17 Improvements	\$800,000 ROW		\$5,202,000 CON	\$19,101,744 CON	Total: \$36,025,000	\$500,000	\$2,225,000 PE	New Facility/ Major Roadway Upgrade	NHPP/STP	Project includes reconstruction of BR18A carrying US2 over I-89, interchange upgrades, and improvements to US2/7 intersection. Includes \$10M in FY24.
					PE: \$2,225,000				100 % Federal	
					ROW: \$800,000				0 % State	
VTrans Number: NH 028-1(31)					CON: \$33,000,000				0 % Local	<b><u>VTrans PM:</u></b> Coburn, Patti

\* Future project costs escalated at a rate of 2% per year.



CCRPC # Project Location	FY20-23 Federal Funds				Other Project Information					
	FY20 Phase	FY21 Phase	FY22 Phase	FY23 Phase	Total Cost fed+state+local in 2019 Dollars	Fed. Funds Obligated Thru FY18	FY19 Fed Funds Phase	Project Use Category	Federal Funding Source	Remarks
BP070C West Lakeshore Drive Path					Total: \$1,407,693	\$248,722	\$800,000	Bike/ Pedestrian	STP	2013 and 2015 Transportation Alternatives grants (\$250,000 + \$300,000). Other grants for this project include 2013 and 2014 CCRPC Sidewalk (\$139,835 + \$147,200), and 2015 Bike/Ped (\$431,345).
Church Road to Prim Road					PE: \$307,693		CON			
VTrans Number: TAP TA13(5)					ROW: \$100,000				80 % Federal	
					CON: \$1,000,000				10 % State 10 % Local	
		Funds to be obligated in FY19								<b><u>VTrans PM:</u></b> Robertson, Scott
Colchester-Essex										
BP069 VT15 Multiuse Path	\$600,000 CON	\$493,737 CON			Total: \$1,780,070	\$349,414	\$60,000	Bike/ Pedestrian	STP	CIRC Alternatives Phase II implementation project.
Lime Kiln Road to Susie Wilson Road					PE: \$350,000		ROW			
VTrans Number: NH 030-1(34)					ROW: \$75,000				80 % Federal	
					CON: \$1,355,070				20 % State 0 % Local	
		CIRC Alternative Project								<b><u>VTrans PM:</u></b> Parizo, Erin
Essex										
BR048 Alder Brook Culvert (BR2) on VT117		\$530,400 CON	\$957,168 CON		Total: \$2,170,000	\$207,296	\$16,000	Bridge	STP	Replacement of a failed buried structure on VT117 carrying Alder Brook.
					PE: \$350,000		ROW			
VTrans Number: BF 5400(9)					ROW: \$20,000				80 % Federal	
					CON: \$1,800,000				20 % State 0 % Local	
										<b><u>VTrans PM:</u></b> Young, Robert
BP091 Pinecrest Drive Sidewalk	\$186,216 CON				Total: \$357,770	\$100,000	\$174,216	Bike/ Pedestrian	STP	2015 Transportation Alternatives grant (\$286,216)
VT2A to Suffolk Lane					PE: \$115,000		CON			
VTrans Number: TAP TA15(4)					ROW: \$25,000				80 % Federal	
					CON: \$217,770				0 % State 20 % Local	
										<b><u>VTrans PM:</u></b> Perrigo, Joel

\* Future project costs escalated at a rate of 2% per year.

CCRPC # Project Location	FY20-23 Federal Funds				Other Project Information					
	FY20 Phase	FY21 Phase	FY22 Phase	FY23 Phase	Total Cost fed+state+local in 2019 Dollars	Fed. Funds Obligated Thru FY18	FY19 Fed Funds Phase	Project Use Category	Federal Funding Source	Remarks
OT036 Stormwater Detention Pond Design and Construction at LDS Church		\$381,730 CON			Total: \$1,346,185 PE: \$244,200 ROW: \$27,490 CON: \$1,074,495	\$25,497	\$71,038 PE/ROW	Stormwater/ Environmental	STP  35 % Federal  45 % State 20 % Local	Municipal Highway and Stormwater Mitigation Program award (\$478,265 fed, \$598,683 state)
VTrans Number: STP MM18(9)					<b><u>VTrans PM:</u></b> Robertson, Scott					
OT040 Stormwater System Retrofit with Infiltration Systems and Stabilized Outfalls for Three Cul- de-sacs	\$217,461 CON				Total: \$357,000 PE: \$100,000 ROW: \$5,000 CON: \$252,000	\$44,800	\$4,400 ROW	Stormwater/ Environmental	STP  80 % Federal  0 % State 20 % Local	2018 Transportation Alternatives award (\$271,139)
Acorn Circle, Sage Circle, Oakwood Lane					<b><u>VTrans PM:</u></b> Bohl, Tina					
HP120 Susie Wilson Road Corridor and Intersection Improvements					Total: \$8,500,000 PE: \$150,000 ROW: CON:		\$150,000 Scoping	Roadway Corridor Improvement	STP  100 % Federal 0 % State 0 % Local	CIRC Alt Phase III project. Includes improvements to VT15/Susie Wilson Rd and Susie Wilson/Kellogg Rd
VTrans Number: STP 5400(11)  CIRC Alternative Project - Funding schedule to be determined					<b><u>VTrans PM:</u></b> Coburn, Patti					
OT025 Sydney Drive Detention Pond	\$172,000 CON				Total: \$315,000 PE: \$85,000 ROW: \$15,000 CON: \$215,000	\$68,000	\$12,000 ROW	Stormwater/ Environmental	STP  80 % Federal 0 % State 20 % Local	2016 TA award (\$243,954) for retrofit of a detention pond in a wooded area adjacent to Sydney Drive.
VTrans Number: TAP TA16(5)					<b><u>VTrans PM:</u></b> Robertson, Scott					

\* Future project costs escalated at a rate of 2% per year.

CCRPC # Project Location	FY20-23 Federal Funds				Other Project Information					
	FY20 Phase	FY21 Phase	FY22 Phase	FY23 Phase	Total Cost fed+state+local in 2019 Dollars	Fed. Funds Obligated Thru FY18	FY19 Fed Funds Phase	Project Use Category	Federal Funding Source	Remarks
BP086 Towers Road Sidewalk					Total: \$276,000 PE: \$65,000 ROW: \$50,000 CON: \$161,000	\$97,296	\$175,240 ROW/CON	Bike/ Pedestrian	STP  80 % Federal 10 % State 10 % Local	2014 Bike/Ped award (\$175,133) for 1,000 feet of sidewalk along Towers Road.
VTrans Number: STP BP14(7)	Funds to be obligated in FY19				<u><b>VTrans PM:</b></u> Perrigo, Joel					
HP098B VT117 Paving	\$200,000 CON				Total: \$5,223,808 PE: \$216,753 ROW: CON: \$5,007,055	\$4,760,994	\$779,628 CON	Paving	NHPP  80 % Federal 20 % State 0 % Local	1.2 miles east of 5-Corners to Jericho Town Line.
VTrans Number: NH 2931(2)					<u><b>VTrans PM:</b></u> Kipp, Brandon					
OT023 VT117/North Williston Road Hazard Mitigation Improvements					Total: \$400,000 PE: ROW: CON:			Safety/ Traffic Operations/ ITS	STP  80 % Federal 20 % State 0 % Local	CIRC Alt Phase III project. Installation of a 6 ft box culvert, safety enhancements and armoring.
VTrans Number:	CIRC Alternative Project - Funding schedule to be determined				<u><b>VTrans PM:</b></u> CIRC Alternative					
HP121 VT117/North Williston Road Intersection Improvements	\$50,000 ROW		\$1,300,500 CON		Total: \$1,568,000 PE: \$268,000 ROW: \$50,000 CON: \$1,250,000	\$125,000		Safety/ Traffic Operations/ ITS	STP  100 % Federal 0 % State 0 % Local	CIRC Alt Phase III project.
VTrans Number: STP 5400(10)	CIRC Alternative Project				<u><b>VTrans PM:</b></u> Sisson, Taylor					
BR060 VT128 Culvert BR1 Carrying Alder Brook	\$400,000 CON				Total: \$505,000 PE: \$5,000 ROW: CON: \$500,000	\$8,000	\$400,000 CON	Bridge	STP  80 % Federal 0 % State 20 % Local	
VTrans Number: BM19501					<u><b>VTrans PM:</b></u> Scribner, Sven					

\* Future project costs escalated at a rate of 2% per year.

CCRPC # Project Location	FY20-23 Federal Funds				Other Project Information					
	FY20 Phase	FY21 Phase	FY22 Phase	FY23 Phase	Total Cost fed+state+local in 2019 Dollars	Fed. Funds Obligated Thru FY18	FY19 Fed Funds Phase	Project Use Category	Federal Funding Source	Remarks
BP081 VT15 Sidewalk - Old Stage Road to Essex Way					Total: \$160,000 PE: ROW: CON:			Bike/ Pedestrian	STP  80 % Federal 20 % State 0 % Local	CIRC Alt Phase III project.
VTrans Number:	CIRC Alternative Project - Funding schedule to be determined				VTrans PM: Coburn, Patti					
HP082 VT15/Sand Hill Road Intersection Improvements		\$255,000 CON	\$703,811 CON		Total: \$1,201,481 PE: \$200,000 ROW: \$75,000 CON: \$926,481	\$200,000	\$75,000 ROW	Safety/ Traffic Operations/ ITS	STP  100 % Federal 0 % State 0 % Local	CIRC Alt Phase II implementation project. Scoping completed February 2008.
VTrans Number: STPG 030-1(22)	CIRC Alternative Project				VTrans PM: Sisson, Taylor					
RR010 VT2A (Park Street) Rail Crossing Improvements	\$76,500 PE				Total: PE: ROW: CON:			Rail	Section 130 Rail Grade Crossing  90 % Federal 10 % State 0 % Local	
VTrans Number: STP 5300(15)	New				VTrans PM: Libby, Paul					
Essex Junction										
HC014 Crescent Connector	\$3,000,000 CON	\$2,733,600 CON			Total: \$9,600,000 PE: \$1,150,000 ROW: \$1,350,000 CON: \$7,100,000	\$1,154,000	\$4,700,000 ROW/CON	New Facility/ Major Roadway Upgrade	STP  80 % Federal 20 % State 0 % Local	CIRC Alt Phase I project. Construction of a new road connecting VT2A and VT117 and improvement to Railroad Street between VT117 and VT15.
VT2A to VT117 VTrans Number: STP 5300(13)	CIRC Alternative Project				VTrans PM: Perrigo, Joel					
OT026 Mansfield/Brickyard Gravel Wetlands	\$88,000 CON				Total: \$190,000 PE: \$60,000 ROW: \$20,000 CON: \$110,000	\$72,000	\$16,000 ROW	Stormwater/ Environmental	STP  80 % Federal 0 % State 20 % Local	2016 TA award (\$142,456) to construct a gravel wetland for runoff from Creek Condominiums and portions of a village road.
VTrans Number: TAP TA16(7)					VTrans PM: Robertson, Scott					

\* Future project costs escalated at a rate of 2% per year.

CCRPC # Project Location	FY20-23 Federal Funds				Other Project Information					
	FY20 Phase	FY21 Phase	FY22 Phase	FY23 Phase	Total Cost fed+state+local in 2019 Dollars	Fed. Funds Obligated Thru FY18	FY19 Fed Funds Phase	Project Use Category	Federal Funding Source	Remarks
OT034 Phosphorous Control Plan					Total: \$50,000 PE: \$50,000 ROW: CON:	\$21,216	\$18,784 Scoping	Stormwater/ Environmental	STP  80 % Federal 0 % State 20 % Local	Municipal Highway and Stormwater Mitigation Program award  <b><u>VTrans PM:</u></b>
VTrans Number: STP MM18(2) Funds to be obligated in FY19										
OT041 Purchase of Vacuum Flusher/Pipeline Truck	\$283,000				Total: \$353,750 PE: ROW: CON:		\$283,000	Stormwater/ Environmental	STP  80 % Federal 0 % State 20 % Local	2018 Transportation Alternatives award (\$283,000)  <b><u>VTrans PM:</u></b>
VTrans Number: TAP TA18(3)										
Essex-Underhill										
HP132 VT15 Paving	\$3,155,213 CON				Total: \$6,244,016 PE: \$300,000 ROW: CON: \$5,944,016	\$109,458	\$1,600,000 CON	Paving	STP  80 % Federal 20 % State 0 % Local	     <b><u>VTrans PM:</u></b> Bogaczyk, Matthew
MM 3.26 to MM 4.351 VTrans Number: STP PS19(6)										
Hinesburg										
BR053 BR24 (Cattle-pass) on VT116	\$140,000 CON				Total: \$235,813 PE: \$60,813 ROW: \$0 CON: \$175,000	\$28,000	\$28,000 ROW	Bridge	STP  80 % Federal 20 % State 0 % Local	Replace a failing cattle underpass with a 78 inch polymer coated corrugated steel pipe (PCCSP)  <b><u>VTrans PM:</u></b> McCarthy, J.B.
North of North Road VTrans Number: BF 021-1(35)										

\* Future project costs escalated at a rate of 2% per year.



CCRPC # Project Location	FY20-23 Federal Funds				Other Project Information					
	FY20 Phase	FY21 Phase	FY22 Phase	FY23 Phase	Total Cost fed+state+local in 2019 Dollars	Fed. Funds Obligated Thru FY18	FY19 Fed Funds Phase	Project Use Category	Federal Funding Source	Remarks
BP066 Village North Sidewalk					Total: \$260,800	\$81,080	\$124,000	Bike/ Pedestrian	STP	2012 Bike/Ped grant (\$190,538)
VT116 from Commerce Street to Riggs Road					PE: \$78,500		CON			
VTrans Number: STP BIKE(54)					ROW: \$2,300				80 % Federal 10 % State	
					CON: \$180,000				10 % Local	
										<u>VTrans PM:</u> Kaplan, Jon
BP098 Village South Sidewalk	\$3,200 ROW	\$198,846 CON			Total: \$293,880	\$32,054	\$4,000	Bike/ Pedestrian	STP	2016 Bike/Ped grant (\$120,500). 2018 Bike/Ped grant (\$114,400).
VT116 from School to Friendship Lane					PE: \$53,762		ROW			
VTrans Number: STP BP16(11)					ROW: \$5,000				80 % Federal 0 % State 20 % Local	
					CON: \$235,118					<u>VTrans PM:</u> Robertson, Scott
HP058 VT116/CVU Road Improvements	\$2,622,760 CON	\$255,000 CON			Total: \$3,802,760	\$430,202	\$250,000	Safety/ Traffic Operations/ ITS	STP	Improvements including left turn lanes on VT116. Section 164 funds used for PE.
VT116/TH1/TH7					PE: \$780,000		CON			
VTrans Number: HES 021-1(19)					ROW: \$150,000				100 % Federal 0 % State 0 % Local	
					CON: \$2,872,760					<u>VTrans PM:</u> Coburn, Patti
Huntington										
BR055 BR32 on Camels Hump Road	\$140,000 PE	\$40,800 ROW	\$312,120 CON	\$1,014,770 CON	Total: \$1,720,300	\$32,000	\$200,000	Bridge	STP	
					PE: \$175,000		PE			
					ROW: \$50,000				80 % Federal 10 % State 10 % Local	
VTrans Number: BP 1445(38)					CON: \$1,495,300					<u>VTrans PM:</u> Stone, Laura

\* Future project costs escalated at a rate of 2% per year.

CCRPC # Project Location	FY20-23 Federal Funds				Other Project Information					
	FY20 Phase	FY21 Phase	FY22 Phase	FY23 Phase	Total Cost fed+state+local in 2019 Dollars	Fed. Funds Obligated Thru FY18	FY19 Fed Funds Phase	Project Use Category	Federal Funding Source	Remarks
<b>Interstate/Expressway</b>										
OT032 <b>Allen Brook Stormwater Flow Restoration</b>  Allen Brook <b>VTrans Number:</b> IM SWFR(1)					Total: \$985,342 PE: \$250,000 ROW: CON: \$735,342	\$135,000	\$657,000 CON	Stormwater/ Environmental	NHPP  90 % Federal 10 % State 0 % Local	Stormwater project for Allen Brook in the area of I-89 mm 80 to 84. This project will design and construct a system using best management practices to implement VTrans flow restoration plans. Project is within the state highway right-of-way.  <b><u>VTrans PM:</u></b> Devlin, Jesse
HP142 <b>I-189 Concrete Pavement Repair, Burlington-South Burlington</b>  Ramps H and C <b>VTrans Number:</b> IM 189-3(77)	\$225,000 PE	\$918,000 CON			Total: \$1,250,000 PE: \$250,000 ROW: CON: \$1,000,000			Paving	NHPP  90 % Federal 10 % State 0 % Local	<b><u>VTrans PM:</u></b> Bogaczyk, Matthew
HP143 <b>I-189 Paving, Burlington-South Burlington</b>  EB and WB MM 0.0 to 1.488 including ramps <b>VTrans Number:</b> IM 189-3(78)	\$580,000 CON				Total: \$1,300,000 PE: \$100,000 ROW: CON: \$1,200,000		\$500,000 CON	Paving	NHPP  90 % Federal 10 % State  0 % Local	<b><u>VTrans PM:</u></b> Bogaczyk, Matthew
HC017 <b>I-89 2050 Scoping Study</b>    <b>VTrans Number:</b> IM 089-2(53)	\$67,500 Scoping				Total: PE: ROW: CON:		\$67,500 Scoping	New Facility/ Major Roadway Upgrade	STP  90 % Federal 10 % State 0 % Local	<b><u>VTrans PM:</u></b>

\* Future project costs escalated at a rate of 2% per year.

CCRPC # Project Location	FY20-23 Federal Funds				Other Project Information					
	FY20 Phase	FY21 Phase	FY22 Phase	FY23 Phase	Total Cost fed+state+local in 2019 Dollars	Fed. Funds Obligated Thru FY18	FY19 Fed Funds Phase	Project Use Category	Federal Funding Source	Remarks
BR047 <b>I-89 Bridge Rehabilitation, Bolton</b>  Culvert 51-3 Carrying Notch Road <b>VTrans Number:</b> IM 089-2(45)	\$463,680 CON				Total: \$675,693 PE: \$160,493 ROW: CON: \$515,200	\$76,500		Bridge	NHPP  90 % Federal 10 % State 0 % Local	<b><u>VTrans PM:</u></b> McCarthy, J.B.
BR032 <b>I-89 Bridge Rehabilitation, Colchester</b>  BR76 (Bay Road) and BR77 (Mallets Creek) <b>VTrans Number:</b> IM 089-3(69)	\$8,000,000 CON	\$4,957,172 CON			Total: \$15,541,711 PE: \$1,252,852 ROW: CON: \$14,288,859	\$747,580		Bridge	NHPP  90 % Federal 10 % State 0 % Local	<b><u>VTrans PM:</u></b> Sumner, Todd
HP144 <b>I-89 Paving, Richmond- Colchester</b>  MM 79 to MM 91.88 NB and SB, and ramps <b>VTrans Number:</b> IM SURF(63)	\$4,200,000 CON			New	Total: \$9,140,819 PE: \$20,000 ROW: CON: \$9,120,819		\$4,000,000 CON	Paving	NHPP  90 % Federal 10 % State 0 % Local	<b><u>VTrans PM:</u></b> Bogaczyk, Matthew
HP133 <b>I-89 Paving, Waterbury- Richmond</b>  NB and SB lanes, MM 66 to MM 79 <b>VTrans Number:</b> IM SURF(58)				Funds to be obligated in FY19	Total: \$6,371,889 PE: \$50,000 ROW: CON: \$6,321,889		\$5,340,600 CON	Paving	NHPP  90 % Federal 10 % State 0 % Local	<b><u>VTrans PM:</u></b> Kipp, Brandon
BR059 <b>Richmond BR29 on US2 over I- 89</b>  <b>VTrans Number:</b> IM 089-2(52)	\$189,000 PE	\$192,780 PE			Total: \$10,870,240 PE: \$600,000 ROW: \$40,000 CON: \$10,230,240		\$162,000 PE	Bridge	NHPP  90 % Federal 10 % State 0 % Local	<b><u>VTrans PM:</u></b> Carlson, Carolyn

\* Future project costs escalated at a rate of 2% per year.



CCRPC # Project Location	FY20-23 Federal Funds				Other Project Information					
	FY20 Phase	FY21 Phase	FY22 Phase	FY23 Phase	Total Cost fed+state+local in 2019 Dollars	Fed. Funds Obligated Thru FY18	FY19 Fed Funds Phase	Project Use Category	Federal Funding Source	Remarks
OT042 Purchase of Vactor Truck	\$300,000				Total: \$375,000 PE: ROW: CON:		\$300,000	Stormwater/ Environmental	STP  80 % Federal 0 % State 20 % Local	2018 Transportation Alternatives award (\$300,000)  <b>VTrans PM:</b>
VTrans Number: TAP TA18(4)										
BP097 US7 Sidewalk - Nancy Drive to Haydenberry Drive	\$594,400 CON				Total: \$1,078,000 PE: \$245,000 ROW: \$90,000 CON: \$743,000	\$196,170	\$72,000 ROW	Bike/ Pedestrian	STP  80 % Federal 0 % State 20 % Local	Fill 3,830 feet of sidewalk gaps on north side of US7. 2016 Bike/Ped grant (\$850,000).  <b>VTrans PM:</b> Bohl, Tina
VTrans Number: STP BP16(10)										
HP007 US7/Middle Rd/Railroad St Intersection			\$2,601,000 CON	\$1,061,208 CON	Total: \$4,200,000 PE: \$550,000 ROW: \$150,000 CON: \$3,500,000	\$200,000	\$500,000 PE/ROW	Safety/ Traffic Operations/ ITS	STP  100 % Federal 0 % State 0 % Local	Northern section to be funded by VTrans, southern section to be funded by Milton.  <b>VTrans PM:</b> Coburn, Patti
US7/TH1 VTrans Number: STP 5800(3)										
Regional										
BR003 Bridge Inspection	\$50,000 PE	\$50,000 PE	\$50,000 PE	\$50,000 PE	Total: PE: ROW: CON:		\$50,000 PE	Bridge	NHPP/STP  % Federal % State % Local	CCRPC share of VTrans bridge inspection program. Funding shares to be determined.  <b>VTrans PM:</b> Regional
Regional VTrans Number:										
BR033 Bridge Preventative Maintenance	\$250,000 PE/ROW/CON	\$250,000 PE/ROW/CON	\$250,000 PE/ROW/CON	\$250,000 PE/ROW/CON	Total: PE: ROW: CON:		\$250,000 PE/ROW/CON	Bridge	NHPP/STP  % Federal % State % Local	Bridge preventative maintenance and painting for state and interstate bridges in Chittenden County. Funding shares to be determined.  <b>VTrans PM:</b> Regional
Regional VTrans Number:										

\* Future project costs escalated at a rate of 2% per year.

CCRPC # Project Location	FY20-23 Federal Funds				Other Project Information					
	FY20 Phase	FY21 Phase	FY22 Phase	FY23 Phase	Total Cost fed+state+local in 2019 Dollars	Fed. Funds Obligated Thru FY18	FY19 Fed Funds Phase	Project Use Category	Federal Funding Source	Remarks
BR004 <b>Bridge Scoping and Preliminary Engineering</b>  Regional <b>VTrans Number:</b>	\$100,000 PE	\$100,000 PE	\$100,000 PE	\$100,000 PE	Total: PE: ROW: CON:		\$100,000 PE	Bridge	NHPP/STP  % Federal % State % Local	Funding for VTrans scoping and preliminary engineering. Funding shares to be determined.  <b><u>VTrans PM:</u></b> Regional
OT006 <b>Design Scoping Projects</b>  Regional <b>VTrans Number:</b>	\$100,000 PE	\$100,000 PE	\$100,000 PE	\$100,000 PE	Total: PE: ROW: CON:		\$100,000 PE	Safety/ Traffic Operations/ ITS	NHPP/STP  % Federal % State % Local	Funding for VTrans scoping in Chittenden County. Funding shares to be determined.  <b><u>VTrans PM:</u></b> Regional
OT005 <b>Local Roads</b>  Regional <b>VTrans Number:</b>	\$16,000	\$16,000	\$16,000	\$16,000	Total: PE: ROW: CON:		\$16,000	Safety/ Traffic Operations/ ITS	LTAP  80 % Federal 20 % State 0 % Local	CCRPC's share of the statewide Local Roads program. Funds are non-constrained.  <b><u>VTrans PM:</u></b> Regional
OT017 <b>Modifications and Overruns</b>  <b>VTrans Number:</b>	\$500,000 PE/ROW/CON	\$500,000 PE/ROW/CON	\$500,000 PE/ROW/CON	\$500,000 PE/ROW/CON	Total: PE: ROW: CON:		\$500,000 PE/ROW/CON	Safety/ Traffic Operations/ ITS	NHPP/STP  % Federal % State % Local	Funds to be used for projects that have been completed but are still incurring costs. Funding shares to be determined.  <b><u>VTrans PM:</u></b> Regional
HP012 <b>Pavement Marking</b>  Regional <b>VTrans Number:</b>	\$40,000 CON	\$40,000 CON	\$40,000 CON	\$40,000 CON	Total: PE: ROW: CON:		\$40,000 CON	Paving	NHPP/STP  100 % Federal 0 % State 0 % Local	Funding for VTrans annual pavement marking in Chittenden County.  <b><u>VTrans PM:</u></b> Regional

\* Future project costs escalated at a rate of 2% per year.

CCRPC # Project Location	FY20-23 Federal Funds				Other Project Information					
	FY20 Phase	FY21 Phase	FY22 Phase	FY23 Phase	Total Cost fed+state+local in 2019 Dollars	Fed. Funds Obligated Thru FY18	FY19 Fed Funds Phase	Project Use Category	Federal Funding Source	Remarks
HP016 <b>Paving</b>	\$50,000 PE/CON	\$50,000 PE/CON	\$50,000 PE/CON	\$50,000 PE/CON	Total: PE: ROW: CON:		\$50,000 PE/CON	Paving	NHPP/STP	Funding for VTrans design of paving projects in Chittenden County. Funding shares to be determined.
Regional <b>VTrans Number:</b>									% Federal % State % Local	<b><u>VTrans PM:</u></b> Regional
BP022 <b>Regional Recreational Trails</b>	\$70,000 CON	\$70,000 CON	\$70,000 CON	\$70,000 CON	Total: PE: ROW: CON:		\$70,000 CON	Bike/ Pedestrian	Rec Trails	Recreational trails program administered by the Vermont Agency of Natural Resources.
<b>VTrans Number:</b>									80 % Federal 0 % State 20 % Local	<b><u>VTrans PM:</u></b> Regional
OT001 <b>Regional Safety</b>	\$250,000 PE/ROW/CON	\$250,000 PE/ROW/CON	\$250,000 PE/ROW/CON	\$250,000 PE/ROW/CON	Total: PE: ROW: CON:		\$250,000 PE/ROW/CON	Safety/ Traffic Operations/ ITS	Safety	Funding for safety projects. Funding shares to be determined.
Regional <b>VTrans Number:</b>									% Federal % State % Local	<b><u>VTrans PM:</u></b> Regional
HP115 <b>Slopes and Ledges</b>	\$250,000 PE/ROW/CON	\$250,000 PE/ROW/CON	\$250,000 PE/ROW/CON	\$250,000 PE/ROW/CON	Total: PE: ROW: CON:		\$250,000 PE/ROW/CON	Slopes and Ledges	NHPP/STP	Funding for projects to address and maintain stability of slopes. Funding shares to be determined.
<b>VTrans Number:</b>									% Federal % State % Local	<b><u>VTrans PM:</u></b> Regional
BR054 <b>Small Culverts</b>	\$100,000 PE/ROW/CON	\$100,000 PE/ROW/CON	\$100,000 PE/ROW/CON	\$100,000 PE/ROW/CON	Total: PE: ROW: CON:		\$100,000 PE/ROW/CON	Bridge	NHPP/STP	Funding for small culvert projects in Chittenden County.
Regional <b>VTrans Number:</b>									% Federal % State % Local	<b><u>VTrans PM:</u></b> Regional

\* Future project costs escalated at a rate of 2% per year.

CCRPC # Project Location	FY20-23 Federal Funds				Other Project Information					
	FY20 Phase	FY21 Phase	FY22 Phase	FY23 Phase	Total Cost fed+state+local in 2019 Dollars	Fed. Funds Obligated Thru FY18	FY19 Fed Funds Phase	Project Use Category	Federal Funding Source	Remarks
HP050 Statewide Traffic Signal Re- Timing	\$35,000 PE	\$35,000 PE	\$35,000 PE	\$35,000 PE	Total: PE: ROW: CON:		\$35,000 PE	Safety/ Traffic Operations/ ITS	STP  100 % Federal 0 % State 0 % Local	Funding for Chittenden County share of VTrans statewide optimization of traffic signals on the state system.
VTrans Number:										<u>VTrans PM:</u> Regional
HP027 Traffic Signals	\$10,000 PE	\$10,000 PE	\$10,000 PE	\$10,000 PE	Total: PE: ROW: CON:		\$10,000 PE	Safety/ Traffic Operations/ ITS	STP  100 % Federal 0 % State 0 % Local	Funding for VTrans scoping and preliminary engineering for traffic signals on the state system in Chittenden County.
Regional VTrans Number:										<u>VTrans PM:</u> Regional
Shelburne										
BP107 Irish Hill Road Pedestrian Bridge and Sidewalk		\$455,000 CON			Total: PE: ROW: CON:	\$864,230 \$185,192	\$124,108 PE	Bike/ Pedestrian	STP  80 % Federal 0 % State 20 % Local	2018 Bike/ped award (\$579,200) for prefabricated ped bridge and new sidewalk along Irish Hill Road.
VTrans Number: STP BP18(3)										<u>VTrans PM:</u>
OT027 Nesti/VELCO Gravel Wetlands Project		\$71,000 CON			Total: PE: ROW: CON:	\$370,000 \$60,000 \$10,000 \$300,000	\$16,000  \$71,000 CON	Stormwater/ Environmental	STP  80 % Federal 0 % State 20 % Local	2016 TA award (\$87,000) to construct a gravel wetland stormwater treatment system to treat runoff from Shelburne Bay. Other funding sources include Lake Champlain Basin Program, Waterwheel Foundation and Clean Water Initiative Program.
VTrans Number: TAP TA16(6)										<u>VTrans PM:</u> Perrigo, Joel

\* Future project costs escalated at a rate of 2% per year.



CCRPC # Project Location	FY20-23 Federal Funds				Other Project Information						
	FY20 Phase	FY21 Phase	FY22 Phase	FY23 Phase	Total Cost <i>fed+state+local in 2019 Dollars</i>	Fed. Funds Obligated Thru FY18	FY19 Fed Funds Phase	Project Use Category	Federal Funding Source	Remarks	
BP104 Town Hall/Parade US7 Crosswalk Upgrade					Total:		\$3,850	Bike/ Pedestrian	STSP	2017 Bike&Ped Award (\$3,850) for a rectangular rapid flashing beacon (RRFB) on US7.	
					PE:		CON				
					ROW:				80 % Federal		
					CON:				0 % State 20 % Local		
VTrans Number:	Funds to be obligated in FY19				VTrans PM:						
HP127 US7/Harbor Road/Falls Road					Total:	\$1,540,000		Safety/ Traffic Operations/ ITS	STP	Intersection upgrades. Illustrative project pending the availability of federal funds.	
					PE:	\$140,000					
					ROW:				80 % Federal		
					CON:	\$1,400,000			20 % State 0 % Local		
VTrans Number:	Illustrative				VTrans PM:						
Shelburne-South Burlington											
HP137 US7 Signal Upgrades					Total:		\$75,000	Safety/ Traffic Operations/ ITS	NHPP	Signal upgrades in 16 locations on US7 between Webster Rd and Swift St.	
					PE:						
					ROW:				100 % Federal		
					CON:				0 % State 0 % Local		
VTrans Number:	Funding schedule to be determined				VTrans PM: Sisson, Taylor						
South Burlington											
OT037 Bartlett Brook Stormwater Treatment System Expansion	\$1,313 ROW	\$117,423 CON			Total:	\$469,650	\$26,676	\$1,313 ROW	Stormwater/ Environmental	STP	Municipal Highway and Stormwater Mitigation Program award (\$123,988 fed, \$251,732 state)
					PE:	\$20,200					
					ROW:	\$5,050				26 % Federal	
					CON:	\$444,400				54 % State 20 % Local	
VTrans Number:	STP MM18(17)				VTrans PM:						

\* Future project costs escalated at a rate of 2% per year.

CCRPC # Project Location	FY20-23 Federal Funds				Other Project Information					
	FY20 Phase	FY21 Phase	FY22 Phase	FY23 Phase	Total Cost fed+state+local in 2019 Dollars	Fed. Funds Obligated Thru FY18	FY19 Fed Funds Phase	Project Use Category	Federal Funding Source	Remarks
HC012 <b>I-89 Exit 14 Area Signal Upgrades</b>  Williston Road and Dorset Street <b>VTrans Number:</b>	\$400,000 CON	\$663,982 CON			Total: \$1,330,000 PE: ROW: CON:		\$1,063,982	Safety/ Traffic Operations/ ITS	SAFETEA-LU Earmark  80 % Federal 0 % State 20 % Local	SAFETEA-LU earmark. Demo ID number VT039. Earmark amount \$4 M programmed at 90%. Funds were used for Improvements to I-89 Exit 14 Ramp C and for Staples Lane. \$1,063,982 remains in the earmark.  <b><u>VTrans PM:</u></b> Earmark
OT047 <b>Kennedy Drive Gravel Wetland Retrofit - Pond 2</b>  <b>VTrans Number:</b>	\$66,317 CON				Total: \$317,020 PE: \$53,820 ROW: \$12,000 CON: \$251,200		\$17,376 PE/ROW	Stormwater/ Environmental	STP  26 % Federal 54 % State 20 % Local	FY19 Municipal Highway and Stormwater Mitigation Program award (\$83,693 fed, \$169,923 state).  <b><u>VTrans PM:</u></b>
OT044 <b>Kennedy Drive Stormwater Pond 7 Expansion</b>  <b>VTrans Number:</b> TAP TA18(7)	\$267,400 CON				Total: \$350,000 PE: \$50,000 ROW: CON: \$300,000	\$40,108	\$267,440 CON	Stormwater/ Environmental	STP  74 % Federal 0 % State 26 % Local	2018 Transportation Alternatives award (\$300,000)  <b><u>VTrans PM:</u></b> Perrigo, Joel
BR058 <b>Kimball Avenue/Marshall Avenue Culvert Scoping</b>  <b>VTrans Number:</b> STP MM18(3)					Total: PE: \$82,800 ROW: CON:	\$36,633	\$29,607 Scoping	Bridge	STP  80 % Federal 0 % State 20 % Local	Municipal Highway and Stormwater Mitigation Program award  <b><u>VTrans PM:</u></b>
		Funds to be obligated in FY19								

\* Future project costs escalated at a rate of 2% per year.

CCRPC # Project Location	FY20-23 Federal Funds				Other Project Information					
	FY20 Phase	FY21 Phase	FY22 Phase	FY23 Phase	Total Cost fed+state+local in 2019 Dollars	Fed. Funds Obligated Thru FY18	FY19 Fed Funds Phase	Project Use Category	Federal Funding Source	Remarks
OT046 Lindenwood Drive Close Drainage System and Stormwater Treatment		\$95,385 CON			Total: \$379,467 PE: \$65,700 ROW: CON: \$313,767		\$19,973 PE	Stormwater/ Environmental	STP  30 % Federal  50 % State 20 % Local	FY19 Municipal Highway and Stormwater Mitigation Program award (\$115,358 fed, \$188,216 state)
VTrans Number:										<u>VTrans PM:</u>
HC010B Market Street Reconstruction					Total: \$7,167,000 PE: \$2,000,000 ROW: \$170,000 CON: \$4,997,000	\$1,086,924	\$2,500,000 CON	New Facility/ Major Roadway Upgrade	SAFETEA-LU Earmark  80 % Federal 0 % State 20 % Local	Demo ID number VT058. Earmark amount \$5 M programmed at 90%. Balance of PE to come from STP Earmark (Project HC010A).
Transportation Improvements VTrans Number: STP 5200(17)		Funds to be obligated in FY19								<u>VTrans PM:</u> Perrigo, Joel
OT029 Picard Circle Stormwater Improvements					Total: \$358,933 PE: \$65,000 ROW: \$2,000 CON: \$291,933	\$52,000	\$235,147 PE/CON	Stormwater/ Environmental	STP  80 % Federal 0 % State 20 % Local	2017 TA award (\$229,600) to design and construct stormwater infiltration and drainage infrastructure.
VTrans Number: TAP TA17(6)		Funds to be obligated in FY19								<u>VTrans PM:</u> Robertson, Scott
BP102 Williston Road Cycle Track and Pedestrian Improvements	\$488,000 ROW		\$108,885 CON		Total: \$2,412,697 PE: \$253,894 ROW: \$610,049 CON: \$1,548,753	\$58,108	\$145,007 PE	Bike/ Pedestrian	STP  % Federal % State  % Local	New asphalt bike/ped facility on the south side of Williston Road. 2017 Bike&Ped Award (\$800,000). Project to be funded with 50% TIF district financing.
Dorset Street to Midas Drive/White Street VTrans Number: STP BP17(9)										<u>VTrans PM:</u> Kaplan, Jon
OT043 Woodcrest/Deane Street Stormwater Infiltration and Detention System	\$233,200 CON				Total: \$255,000 PE: \$15,000 ROW: CON: \$240,000	\$12,054		Stormwater/ Environmental	STP  80 % Federal  0 % State 20 % Local	2018 Transportation Alternatives award (\$242,000)
VTrans Number: TAP TA18(6)										<u>VTrans PM:</u> Perrigo, Joel

\* Future project costs escalated at a rate of 2% per year.

CCRPC # Project Location	FY20-23 Federal Funds				Other Project Information					
	FY20 Phase	FY21 Phase	FY22 Phase	FY23 Phase	Total Cost fed+state+local in 2019 Dollars	Fed. Funds Obligated Thru FY18	FY19 Fed Funds Phase	Project Use Category	Federal Funding Source	Remarks
St. George										
HP134 VT116/VT2A Improvements	\$100,000 PE				Total: PE: ROW: CON:	\$20,000		Safety/ Traffic Operations/ ITS	STP  100 % Federal 0 % State 0 % Local	<b><u>VTrans PM:</u></b> Coburn, Patti
VTrans Number: STP 021-1(36)										
Transit										
TR061A GMT Capital - Buses, Facilities and Equipment	\$2,500,000	\$3,500,000	\$3,500,000	\$3,500,000	Total: PE: ROW: CON:			Transit	FTA Sec. 5339  80 % Federal 10 % State 10 % Local	Federal funds for vehicle replacement past their useful life, facilities, transit technology, shelters, lighting, bike racks and support equipment. Pending award of funds.
VTrans Number:					<b><u>VTrans PM:</u></b> Transit					
TR061C GMT Capital - Buses, Facilities and Equipment					Total: PE: ROW: CON:		\$1,450,000	Transit	STP Transfer  80 % Federal 10 % State 10 % Local	<b><u>VTrans PM:</u></b> Transit
VTrans Number:										
TR078 GMT Capital - Facility and Bus Heavy Repairs	\$330,000	\$340,000	\$350,000	\$360,000	Total: PE: ROW: CON:		\$700,000	Transit	STP Transfer  80 % Federal 10 % State 10 % Local	Facility and bus PM such as HVAC, energy efficiency, roof, doors, lifts, engines, transmissions, floors, radiators. Pending award of funds to GMT.
VTrans Number:					<b><u>VTrans PM:</u></b> Transit					

\* Future project costs escalated at a rate of 2% per year.

CCRPC # Project Location	FY20-23 Federal Funds				Other Project Information					
	FY20 Phase	FY21 Phase	FY22 Phase	FY23 Phase	Total Cost fed+state+local in 2019 Dollars	Fed. Funds Obligated Thru FY18	FY19 Fed Funds Phase	Project Use Category	Federal Funding Source	Remarks
TR076 GMT Capital - Fare Payment System Improvement		\$500,000	\$500,000	\$500,000	Total: PE: ROW: CON:			Transit	STP Transfer  80 % Federal 10 % State 10 % Local	Improved fare payment system. Pending award of funds to GMT.
VTrans Number:										<u>VTrans PM:</u> Transit
TR003A GMT Capital - Federal	\$50,000	\$50,000	\$50,000	\$50,000	Total: PE: ROW: CON:		\$50,000	Transit	FTA Sec. 5307  80 % Federal 10 % State 10 % Local	Federal formula funds.
VTrans Number:										<u>VTrans PM:</u> Transit
TR003B GMT Capital - Federal	\$200,000	\$206,000	\$212,180	\$318,545	Total: PE: ROW: CON:		\$175,929	Transit	FTA Sec. 5339 - Urban Allocation  80 % Federal 10 % State 10 % Local	Federal Bus and Bus Facility Program.
VTrans Number:										<u>VTrans PM:</u> Transit
TR072 GMT ITS System		\$100,000	\$150,000	\$150,000	Total: PE: ROW: CON:			Transit	STP Transfer  80 % Federal 10 % State 10 % Local	Phase in of additional ITS products. Pending award of funds to GMT.
VTrans Number:										<u>VTrans PM:</u> Transit
TR079C GMT Mobility Management	\$77,250	\$79,568	\$81,955	\$84,414	Total: PE: ROW: CON:		\$75,000	Transit	FTA Sec. 5310 Urbanized Allocation  80 % Federal 10 % State 10 % Local	Mobility management. Pending award of funds to GMT.
VTrans Number:										<u>VTrans PM:</u> Transit

\* Future project costs escalated at a rate of 2% per year.

CCRPC # Project Location	FY20-23 Federal Funds				Other Project Information					
	FY20 Phase	FY21 Phase	FY22 Phase	FY23 Phase	Total Cost fed+state+local in 2019 Dollars	Fed. Funds Obligated Thru FY18	FY19 Fed Funds Phase	Project Use Category	Federal Funding Source	Remarks
TR002 GMT Operating - Federal	\$2,800,000	\$2,900,000	\$3,000,000	\$3,090,000	Total: PE: ROW: CON:		\$3,500,000	Transit	FTA Sec. 5307  50 % Federal 0 % State 50 % Local	Federal formula portion only. Matching funds provided by VTrans and GMT. Includes JARC and CMAQ replacement funds.
VTrans Number:										<u>VTrans PM:</u> Transit
TR030B GMT Operation	\$302,800	\$310,834	\$319,109	\$328,682	Total: PE: ROW: CON:		\$260,000	Transit	Transfer from 5311 to 5307  50 % Federal 50 % State 0 % Local	Pending award of funds to GMT.
VTrans Number:										<u>VTrans PM:</u> Transit
TR063 GMT Passenger Amenities		\$100,000	\$100,000	\$100,000	Total: PE: ROW: CON:			Transit	STP Transfer  80 % Federal 10 % State 10 % Local	Funding for passenger amenities. Pending award of funds to GMT.
VTrans Number:										<u>VTrans PM:</u> Transit
TR046 GMT Preventative Maintenance	\$1,830,000	\$1,885,000	\$1,941,550	\$2,000,000	Total: PE: ROW: CON:		\$1,777,000	Transit	STP Transfer  80 % Federal 0 % State 20 % Local	Pending award of funds to GMT.
VTrans Number:										<u>VTrans PM:</u> Transit
TR089 GMT Service - Barre Link Bus Service	\$110,000	\$113,300	\$116,699		Total: PE: ROW: CON:			Transit	CMAQ  80 % Federal 20 % State 0 % Local	Service between Burlington and Barre with stops in Richmond and Waterbury.
VTrans Number:										<u>VTrans PM:</u> Transit

\* Future project costs escalated at a rate of 2% per year.

CCRPC # Project Location	FY20-23 Federal Funds				Other Project Information					
	FY20 Phase	FY21 Phase	FY22 Phase	FY23 Phase	Total Cost fed+state+local in 2019 Dollars	Fed. Funds Obligated Thru FY18	FY19 Fed Funds Phase	Project Use Category	Federal Funding Source	Remarks
TR054(4)-S <b>GMT Service - Burlington-Montpelier Inter-Regional Bus Service</b> Burlington-Montpelier <b>VTrans Number:</b>	\$37,000	\$38,110	\$39,253	\$40,431	Total: PE: ROW: CON:		\$31,000	Transit	CMAQ  80 % Federal 0 % State 20 % Local	Additional trip at 4 pm on Burlington-Montpelier link due to standees. Pending award of funds to GMT. Funding is shown in year prior to service year to accommodate application review time.  <b><u>VTrans PM:</u></b> Transit
TR085-S <b>GMT Service - Essex Evening</b>  Essex <b>VTrans Number:</b>	\$35,000	\$36,050	\$37,132	\$38,245	Total: PE: ROW: CON:		\$37,132	Transit	CMAQ  80 % Federal 0 % State 20 % Local	Pending award of funds to GMT. Funding is shown in year prior to service year to accommodate application review time.  <b><u>VTrans PM:</u></b> Transit
TR067-S <b>GMT Service - Hinesburg Route</b>  Hinesburg Route <b>VTrans Number:</b>	\$73,000	\$75,190	\$77,446	\$79,769	Total: PE: ROW: CON:		\$69,277	Transit	CMAQ  80 % Federal 0 % State 20 % Local	Pending award of funds to GMT. Funding is shown in year prior to service year to accommodate application review time.  <b><u>VTrans PM:</u></b> Transit
TR074-S <b>GMT Service - Milton Route</b>  Milton <b>VTrans Number:</b>	\$173,000	\$178,190	\$183,536	\$189,042	Total: PE: ROW: CON:		\$175,049	Transit	CMAQ  80 % Federal 0 % State 20 % Local	Pending award of funds to GMT. Funding is shown in year prior to service to accommodate application review time.  <b><u>VTrans PM:</u></b> Transit
TR064-S <b>GMT Service - US2 Corridor</b>  US2 <b>VTrans Number:</b>	\$810,000	\$834,300	\$859,329	\$885,109	Total: PE: ROW: CON:		\$761,969	Transit	CMAQ  80 % Federal 0 % State 20 % Local	Pending award of funds to GMT. Funding is shown in year prior to service year to accommodate application review time.  <b><u>VTrans PM:</u></b> Transit

\* Future project costs escalated at a rate of 2% per year.

CCRPC # Project Location	FY20-23 Federal Funds				Other Project Information					
	FY20 Phase	FY21 Phase	FY22 Phase	FY23 Phase	Total Cost fed+state+local in 2019 Dollars	Fed. Funds Obligated Thru FY18	FY19 Fed Funds Phase	Project Use Category	Federal Funding Source	Remarks
TR088A Innovative Improvements - Fleet, Facility and Equipment			\$5,000,000		Total:			Transit	FTA Sec. 5312	Transportation Improvement Generating Economic Recovery (TIGER) grant. Pending award of funds.
VTrans Number:					PE:				80 % Federal 10 % State 10 % Local	<u>VTrans PM:</u> Transit
TR088B Innovative Improvements - Fleet, Facility and Equipment		\$1,000,000	\$1,000,000		Total:			Transit	FTA Sec. 5339	Renovations to the facility at 1 Industrial Parkway, Burlington.
VTrans Number:					PE:				80 % Federal 10 % State 10 % Local	<u>VTrans PM:</u> Transit
TR004 Paratransit Rolling Stock - ADA	\$135,000	\$263,960	\$131,840	\$139,960	Total:		\$286,800	Transit	FTA Sec. 5310/ STP Transfer	Replacement and expansion of sedan, cutaway and van fleet. Funding pending award of funds.
VTrans Number:					PE:				80 % Federal 10 % State 10 % Local	<u>VTrans PM:</u> Transit
TR060A Paratransit Rolling Stock - Elderly & Disabled	\$270,000	\$271,920	\$420,116	\$72,120	Total:		\$501,900	Transit	VT. Sec. 5310	Replacement and expansion of sedan, cutaway and van fleet. Funding pending award.
VTrans Number:					PE:				80 % Federal 10 % State 10 % Local	<u>VTrans PM:</u> Transit
TR080 Paratransit Scheduling Software and Hardware	\$50,000	\$50,000	\$50,000	\$50,000	Total:		\$50,000	Transit	STP Transfer	Maintenance and licensing fees. Funds awarded to VTrans. Pending award of funds to GMT.
VTrans Number:					PE:				80 % Federal 20 % State 0 % Local	<u>VTrans PM:</u> Transit

\* Future project costs escalated at a rate of 2% per year.



CCRPC # Project Location	FY20-23 Federal Funds				Other Project Information					
	FY20 Phase	FY21 Phase	FY22 Phase	FY23 Phase	Total Cost fed+state+local in 2019 Dollars	Fed. Funds Obligated Thru FY18	FY19 Fed Funds Phase	Project Use Category	Federal Funding Source	Remarks
Underhill										
BP077 VT15/Underhill Flats Sidewalks					Total: \$458,500	\$79,864	\$288,000	Bike/ Pedestrian	STP	2013 Bike/Ped Grant (\$347,022) for construction of 2,640 feet of sidewalk along VT15 from Park St. to Dumas.
					PE: \$72,500		CON			
					ROW: \$26,000				80 % Federal	
					CON: \$360,000				10 % State 10 % Local	
VTrans Number: STP BP13(5)		Funds to be obligated in FY19			VTrans PM: Kaplan, Jon					
Underhill-Westford-Cambridge										
HP136 VT15 Paving	\$1,000,000 CON	\$3,276,240 CON			Total: \$10,955,000	\$281,080		Paving	STP	40 percent of project length in Chittenden County
					PE: \$425,000					
					ROW:				80 % Federal	
					CON: \$10,530,000				20 % State	
MM 4.351 (Underhill) to MM 5.01 (Cambridge)					80 % Federal 20 % State					
VTrans Number: STP PS19(11)					0 % Local VTrans PM: Kipp, Brandon					
Williston										
OT045 Allen Brook Watershed Culverts Scoping Study					Total: \$30,000		\$15,000	Stormwater/ Environmental	STP	2018 Transportation Alternatives award (\$15,000)
					PE:		Scoping			
					ROW:				50 % Federal	
					CON:				0 % State 50 % Local	
VTrans Number: TAP TA18(8)		Funds to be obligated in FY19			VTrans PM:					
BP103 Blair Park Road Sidewalk Loop Connection	\$184,800 CON				Total: \$332,000	\$30,054	\$4,000	Bike/ Pedestrian	STP	2017 Bike&Ped Award (\$225,760) to construct a 5-foot concrete sidewalk.
					PE: \$75,000		ROW			
					ROW: \$17,000				80 % Federal	
					CON: \$240,000				0 % State 20 % Local	
VTrans Number: STP BP17(12)					VTrans PM: Perrigo, Joel					

\* Future project costs escalated at a rate of 2% per year.

CCRPC # Project Location	FY20-23 Federal Funds				Other Project Information					
	FY20 Phase	FY21 Phase	FY22 Phase	FY23 Phase	Total Cost fed+state+local in 2019 Dollars	Fed. Funds Obligated Thru FY18	FY19 Fed Funds Phase	Project Use Category	Federal Funding Source	Remarks
HC016A <b>I-89 Exit 12 Improvements - Stage 1</b>					Total: \$2,240,000 PE: \$200,000 ROW: \$40,000 CON: \$2,000,000	\$162,160		New Facility/ Major Roadway Upgrade	NHPP/STP  80 % Federal 20 % State 0 % Local	CIRC Alt Phase III project. New shared use path under I-89 and additional lane on VT2A to I-89 NB ramp.
VTrans Number: NH 5500(18)	CIRC Alternative Project - CON schedule to be determined				<b><u>VTrans PM:</u></b> Upmal, Ken					
HC016B <b>I-89 Exit 12 Improvements - Stage 2</b>					Total: \$8,500,000 PE: ROW: CON:			New Facility/ Major Roadway Upgrade	NHPP/STP  % Federal % State % Local	CIRC Alt Phase III project. New grid streets and at- grade intersection on VT2A.
VTrans Number: NH 5500( )	CIRC Alternative Project - Funding schedule to be determined				<b><u>VTrans PM:</u></b> Upmal, Ken					
HC016C <b>I-89 Exit 12 Improvements - Stage 3</b>					Total: \$21,000,000 PE: ROW: CON:			New Facility/ Major Roadway Upgrade	NHPP/STP  % Federal % State % Local	CIRC Alt Phase III project. Diverging diamond interchange
VTrans Number: NH 5500( )	CIRC Alternative Project - Funding schedule to be determined				<b><u>VTrans PM:</u></b> Upmal, Ken					
HC016D <b>I-89 Exit 12 Improvements - Stage 4</b>					Total: PE: ROW: CON:			New Facility/ Major Roadway Upgrade	NHPP/STP  % Federal % State % Local	CIRC Alt Phase III project. VT 2A boulevard upgrade from grid street intersection to Taft Corners
VTrans Number: NH 5500( )	CIRC Alternative Project - Funding schedule to be determined				<b><u>VTrans PM:</u></b> Upmal, Ken					
OT030 <b>Lamplite Acres Drainage Improvements</b>					Total: \$420,682 PE: \$75,000 ROW: \$15,000 CON: \$330,682	\$297,916	\$228,000 CON	Stormwater/ Environmental	STP  80 % Federal 0 % State 20 % Local	2017 TA award (\$300,000) to design and construct critical drainage areas.
VTrans Number: TAP TA17(8)	Funds to be obligated in FY19				<b><u>VTrans PM:</u></b> Perrigo, Joel					

\* Future project costs escalated at a rate of 2% per year.

CCRPC # Project Location	FY20-23 Federal Funds				Other Project Information					
	FY20 Phase	FY21 Phase	FY22 Phase	FY23 Phase	Total Cost fed+state+local in 2019 Dollars	Fed. Funds Obligated Thru FY18	FY19 Fed Funds Phase	Project Use Category	Federal Funding Source	Remarks
HP122 Mountain View Road Shoulder Improvements					Total: \$3,500,000 PE: ROW: CON:			Roadway Corridor Improvement	STP  80 % Federal 20 % State 0 % Local	CIRC Alt Phase III project. Shoulder improvements for bike/ped use. Project includes shoulders on Redmond Road to IBM Road.
VTrans Number:	CIRC Alternative Project - Funding schedule to be determined									<b><u>VTrans PM:</u></b> CIRC Alternative
HP138 US2 Paving					Total: \$1,748,574 PE: \$172,000 ROW: CON: \$1,576,574		\$1,540,000 CON	Paving	STP  80 % Federal 20 % State 0 % Local	Mile marker 1.560 - 3.850
Boxwood Street to North Williston Road VTrans Number: STP FPAV(10)	Funds to be obligated in FY19									<b><u>VTrans PM:</u></b> Kipp, Brandon
BP079 US2 Shared Use Path - Taft Corners to Williston Village					Total: \$2,800,000 PE: ROW: CON:			Bike/ Pedestrian	STP  80 % Federal 20 % State 0 % Local	CIRC Alt Phase III project.
VTrans Number:	CIRC Alternative Project - Funding schedule to be determined									<b><u>VTrans PM:</u></b> CIRC Alternative
HP010 US2/Industrial Avenue Intersection	\$500,000 CON	\$2,550,000 CON	\$873,936 CON		Total: \$6,740,000 PE: \$980,000 ROW: \$960,000 CON: \$4,800,000	\$926,430	\$720,000 ROW	Safety/ Traffic Operations/ ITS	STP  80 % Federal 20 % State 0 % Local	Reconstruction of intersection and resurfacing of US2 from S. Burlington line east 1.5 miles.
VTrans Number: STP M 5500(7)S										<b><u>VTrans PM:</u></b> Martin, Bruce
HP109 US2/Trader Lane Traffic Signal					Total: \$484,922 PE: \$36,282 ROW: CON: \$448,640	\$250,000		Safety/ Traffic Operations/ ITS	STP  0 % Federal 100 % State 0 % Local	CIRC Alternatives Phase II implementation project. To be funded with state funds. Construction in FY20.
VTrans Number: STPG 5500(14)	CIRC Alternative Project - State funds only									<b><u>VTrans PM:</u></b> Parizo, Erin

\* Future project costs escalated at a rate of 2% per year.

CCRPC # Project Location	FY20-23 Federal Funds				Other Project Information					
	FY20 Phase	FY21 Phase	FY22 Phase	FY23 Phase	Total Cost fed+state+local in 2019 Dollars	Fed. Funds Obligated Thru FY18	FY19 Fed Funds Phase	Project Use Category	Federal Funding Source	Remarks
BR057 VT2A Culvert  South of Helena Drive VTrans Number: STP SCRP(17)	\$256,250 CON				Total: \$375,000 PE: \$60,000 ROW: \$15,000 CON: \$300,000			Bridge	STP  80 % Federal 20 % State 0 % Local	VTrans PM: Upmal, Ken
BP101 VT2A Infill Sidewalk, South of Taft Corners - West Side  VTrans Number: STP SDWK(21)					Total: \$174,000 PE: \$62,000 ROW: \$12,000 CON: \$100,000	\$72,000		Bike/ Pedestrian	STP  80 % Federal 0 % State 20 % Local	CCRPC Sidewalk grants - FY15 - \$75,000, FY16 - \$41,866.  VTrans PM: Perrigo, Joel
BP080 VT2A Taft Corners Area Sidewalk/Shared Use Path  VTrans Number:					Total: \$450,000 PE: ROW: CON:			Bike/ Pedestrian	STP  80 % Federal 20 % State 0 % Local	CIRC Alt Phase III project. Project to fill gaps south of US2 and between Knight Ln and O'Brien Ct.  VTrans PM: CIRC Alternative
HP123 VT2A/Industrial Avenue/Mountain View Road Intersection Improvements  VTrans Number: STP 5500(17)	\$50,000 ROW			\$530,604 CON	Total: \$4,389,461 PE: \$450,000 ROW: \$50,000 CON: \$3,889,461	\$200,000	\$250,000 PE	Safety/ Traffic Operations/ ITS	STP  100 % Federal  0 % State 0 % Local	CIRC Alt Phase III project. Project includes new two- way left-turn lane between Industrial Ave and River Cove Rd. Includes \$2M in FY24 and \$1.4M in FY25.  VTrans PM: LaCroix, Mike

\* Future project costs escalated at a rate of 2% per year.

CCRPC # Project Location	FY20-23 Federal Funds				Other Project Information					
	FY20 Phase	FY21 Phase	FY22 Phase	FY23 Phase	Total Cost fed+state+local in 2019 Dollars	Fed. Funds Obligated Thru FY18	FY19 Fed Funds Phase	Project Use Category	Federal Funding Source	Remarks
HP090 <b>VT2A/James Brown Drive Traffic Signal</b>  <b>VTrans Number:</b> STP HES 5500(12)					Total: \$3,534,000 PE: \$655,000 ROW: \$450,000 CON: \$2,429,000	\$1,900,000	\$1,663,422 CON	Safety/ Traffic Operations/ ITS	STP  100 % Federal 0 % State 0 % Local	CIRC Alt Phase I project. Traffic signal at James Brown Drive with pedestrian phasing and crosswalks, two-way left- turn lane from River Cove Rd. to Eastview Dr., sidewalk on east side of VT2A.  <b><u>VTrans PM:</u></b> Parizo, Erin
IN004A <b>Williston Park and Ride</b>  New park and ride lot south of I-89 <b>VTrans Number:</b> CMG PARK(29)	\$2,300,000 CON				Total: \$4,425,000 PE: \$875,000 ROW: \$1,250,000 CON: \$2,300,000	\$2,378,000	\$2,300,000 CON	Intermodal	CMAQ  100 % Federal 0 % State 0 % Local	Construct park and ride lot near I-89 Exit 12.  <b><u>VTrans PM:</u></b> Bohl, Tina
<b>Winooski</b>										
HP145 <b>Class I Concrete Pavement Repair, US7 and West Allen Street</b>  <b>VTrans Number:</b> NH PC21(2)	\$120,000 PE	\$816,000 CON			Total: \$1,150,000 PE: \$150,000 ROW: CON: \$1,000,000			Paving	STP  80 % Federal 20 % State 0 % Local	<b><u>VTrans PM:</u></b> Bogaczyk, Matthew
HP146 <b>Class I Paving, US7 and VT15</b>  <b>VTrans Number:</b> NH PC22(2)	\$200,000 PE		\$1,664,640 CON		Total: \$2,250,000 PE: \$250,000 ROW: CON: \$2,000,000			Paving	STP  80 % Federal 20 % State 0 % Local	<b><u>VTrans PM:</u></b> Bogaczyk, Matthew

\* Future project costs escalated at a rate of 2% per year.



---

---

### Section 3: Summary of Funding Amounts

---

---

# CCRPC FY2020-2023 TIP Funding by Project Use Category

<i>Funding Uses</i>	<b>FY20 Federal Funds</b>	<b>FY21 Federal Funds</b>	<b>FY22 Federal Funds</b>	<b>FY23 Federal Funds</b>
Aviation	\$13,177,778	\$9,000,000	\$6,111,111	\$6,702,000
Bridge Preservation	\$10,088,930	\$6,221,152	\$1,769,288	\$1,514,770
Intermodal	\$2,300,000			
New Facility/ Major Roadway Upgrade	\$17,090,001	\$13,327,688	\$10,284,460	\$19,101,744
New Sidewalks and Paths	\$2,702,806	\$1,436,687	\$386,885	\$70,000
Paving	\$10,170,213	\$5,916,240	\$8,413,200	\$90,000
Rail	\$1,033,000			
Roadway Corridor Improvements	\$500,000	\$4,794,000	\$2,965,140	
Safety/ Traffic Operations/ ITS	\$6,935,760	\$7,128,982	\$12,890,060	\$8,382,520
Stormwater/ Environmental	\$2,079,288	\$911,008		
Transit	\$9,783,050	\$12,832,422	\$18,120,145	\$11,976,317
<b>Total</b>	<b>\$75,860,826</b>	<b>\$61,568,179</b>	<b>\$60,940,289</b>	<b>\$47,837,351</b>

Note: Many of the projects listed in the categories Safety/ Traffic Operations/ ITS, Roadway Corridor Improvements, New Facility/ Major Roadway Upgrade, and Paving also include improvements to bicycle and/or pedestrian facilities.

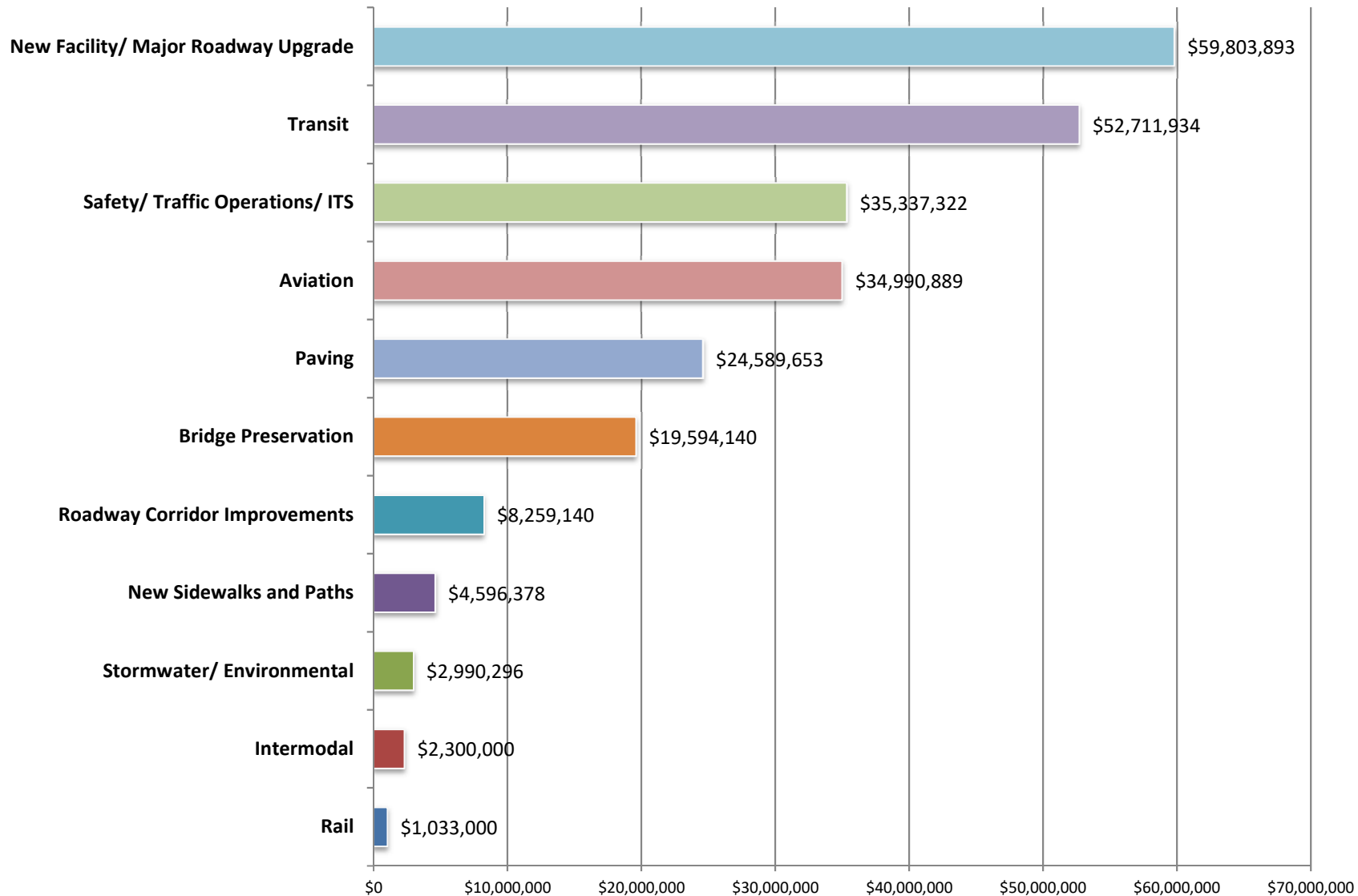


# CCRPC FY2020-2023 TIP Funding by Federal Funding Source and Constraint Status

<i>Federal Funding Sources and Constraint Status</i>	FY20	FY21	FY22	FY23
<b>FHWA Constrained Funds</b>				
National Highway Preservation Program (NHPP)	\$520,000	\$816,000	\$1,664,640	
Surface Transportation Program (STP)	\$23,481,724	\$19,431,528	\$24,700,757	\$21,853,326
To Be Determined (NHPP or STP)	\$840,000	\$840,000	\$840,000	\$840,000
Park and Ride	\$2,300,000			
<b>FHWA Constrained Total</b>	<b>\$27,141,724</b>	<b>\$21,087,528</b>	<b>\$27,205,397</b>	<b>\$22,693,326</b>
<b>FHWA Non-Constrained Funds</b>				
National Highway Preservation Program (NHPP)	\$13,725,180	\$6,067,952		
STP CIRC Alternatives Phase I and Phase II Projects	\$4,000,000	\$3,482,337	\$703,811	\$3,873,409
VTrans Bike/Ped, Transportation Alternatives, or Stormwater Grant	\$4,112,094	\$1,783,958	\$316,885	
Local Transportation Assistance Program (LTAP)	\$16,000	\$16,000	\$16,000	\$16,000
Section 130 Rail Grade Crossing	\$1,305,000			
Modificatons and Overruns (NHPP or STP)	\$500,000	\$500,000	\$500,000	\$500,000
<b>FHWA Non-Constrained Total</b>	<b>\$23,658,274</b>	<b>\$11,850,247</b>	<b>\$1,536,696</b>	<b>\$4,389,409</b>
<b>FHWA Transfer to FTA</b>				
Congestion, Mitigation, Air Quality (CMAQ)	\$1,238,000	\$1,275,140	\$1,313,395	\$1,232,596
STP Transfer	\$2,295,000	\$3,188,960	\$3,173,390	\$3,249,960
<b>FHWA Transfer to FTA Total</b>	<b>\$3,533,000</b>	<b>\$4,464,100</b>	<b>\$4,486,785</b>	<b>\$4,482,556</b>
<b>Federal Earmark or Grant Funds</b>				
SAFETEA-LU Earmark	\$400,000	\$663,982		
Regional Recreational Trails	\$70,000	\$70,000	\$70,000	\$70,000
TIGER	\$880,000			
Safety	\$750,000	\$6,064,000	\$7,896,940	\$2,006,299
<b>Earmark or Grant Total</b>	<b>\$2,100,000</b>	<b>\$6,797,982</b>	<b>\$7,966,940</b>	<b>\$2,076,299</b>
<b>Federal Transit Administration (FTA) Funds</b>				
FTA Section 5307	\$2,850,000	\$2,950,000	\$3,050,000	\$3,140,000
FTA Section 5309	\$50,000	\$50,000	\$50,000	\$50,000
FTA Section 5310	\$77,250	\$79,568	\$81,955	\$84,414
FTA Section 5312			\$5,000,000	
FTA Section 5339	\$2,700,000	\$4,706,000	\$4,712,180	\$3,818,545
Elderly & Disabled Transportation	\$270,000	\$271,920	\$420,116	\$72,120
Transfer from FTA 5311 to FTA 5307	\$302,800	\$310,834	\$319,109	\$328,682
<b>FTA Funds</b>	<b>\$6,250,050</b>	<b>\$8,368,322</b>	<b>\$13,633,360</b>	<b>\$7,493,761</b>
<b>Airport Improvement Program (AIP)</b>	\$13,177,778	\$9,000,000	\$6,111,111	\$6,702,000
<b>Total AIP</b>	<b>\$13,177,778</b>	<b>\$9,000,000</b>	<b>\$6,111,111</b>	<b>\$6,702,000</b>
<b>CCRPC TIP TOTAL</b>	<b>\$75,860,826</b>	<b>\$61,568,179</b>	<b>\$60,940,289</b>	<b>\$47,837,351</b>



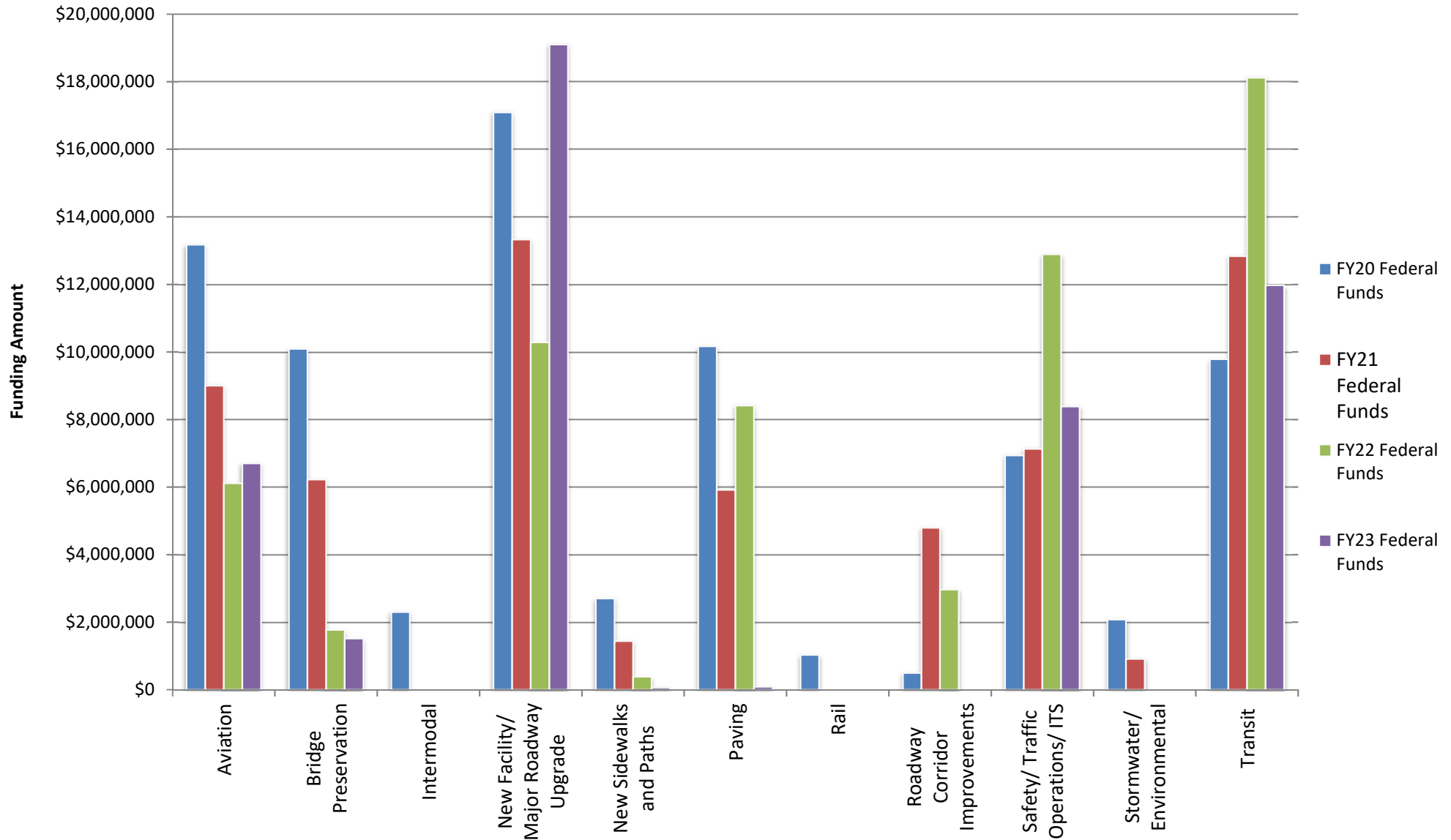
## CCRPC FY2020-2023 TIP Federal Funds Programmed by Project Use Category



Note: Many of the projects listed in the categories Safety/ Traffic Operations/ ITS, Roadway Corridor Improvements, New Facility/ Major Roadway Upgrade, and Paving also include improvements to bicycle and/or pedestrian facilities



## CCRPC FY2020-2023 TIP: Funding Uses By Year



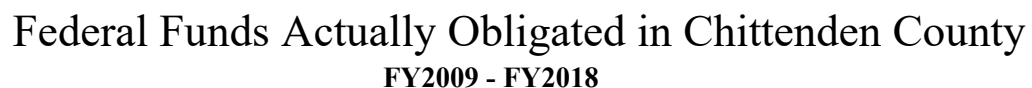
Note: Many projects listed in the categories Safety/Traffic Operations/ITS, Roadway Corridor Improvements, New Facility/Major Roadway Upgrade, and Paving also include improvements to bicycle and/or pedestrian facilities.



## Federal Funds Actually Obligated in Chittenden County FY2009 - FY2018

### Funds by Project Use Category

<i>Uses</i>	FY09	FY10	FY11	FY12	FY13	FY14	FY15	FY16	FY17	FY18	10 Year Average Amount
Paving	\$12,948,840	\$2,237,293	\$4,543,975	\$11,760,895	\$15,413,819	\$2,812,734	\$1,710,329	\$5,055,818	\$16,557,685	\$10,417,201	<b>\$8,345,859</b>
Bridge	\$10,944,182	\$12,281,064	\$7,650,837	\$11,048,022	\$16,156,162	\$1,502,264	\$1,449,786	\$8,178,122	\$5,747,734	\$3,811,969	<b>\$7,877,014</b>
Roadway Corridor Improvements	\$1,487,468	\$2,733,506	\$628,220	\$1,510,070		\$382,700	\$495,124	\$6,936,985	\$7,752,790	\$3,346,387	<b>\$2,808,139</b>
Safety/ Traffic Operations/ ITS	\$3,215,327	\$2,867,711	\$397,073	\$3,392,438	\$1,821,157	\$5,048,209	\$1,626,340	\$2,881,072	\$8,614,491	\$6,099,253	<b>\$3,596,307</b>
New Facility/Major Roadway Upgrades	\$812,706	\$3,029,669	\$4,141,480	\$452,466	\$190,000	\$885,830	\$978,634	\$1,758,811	\$2,238,569	\$1,904,067	<b>\$1,639,223</b>
Slopes and Ledges	\$364,196		\$1,809,306	\$67,500	\$811,931		\$297,613	\$193,260			<b>\$590,634</b>
Bike/ Pedestrian	\$607,646	\$6,040,697	\$3,354,588	\$3,909,023	\$1,926,119	\$2,417,059	\$1,874,999	\$1,431,194	\$1,323,418	\$2,057,858	<b>\$2,494,260</b>
Enhancement	\$10,869	\$324,287				\$254,432		\$2,108			<b>\$147,924</b>
Transit Expansion	\$2,145,258	\$942,778	\$739,778	\$4,093,030	\$98,941	\$1,199,345	\$2,201,462	\$1,297,601	\$1,098,013	\$1,070,806	<b>\$1,488,701</b>
Transit Service	\$1,428,431	\$2,115,237	\$2,075,740	\$575,319	\$4,586,624	\$2,859,468	\$2,718,072	\$2,656,215	\$1,393,184	\$2,829,993	<b>\$2,323,828</b>
Transit System	\$2,769,750	\$1,467,342	\$4,208,647	\$1,771,748	\$1,773,353	\$1,713,083	\$3,107,592	\$3,713,377	\$6,059,478	\$1,852,390	<b>\$2,843,676</b>
Intermodal	\$340,000	\$65,000	\$426,100	\$2,098,000	\$830,251	\$168,800	\$3,388,000	\$159,998	\$674,910	\$844,749	<b>\$899,581</b>
Stormwater/ Environmental	\$459,000				\$2,950,971	\$1,278,642		\$188,000	\$490,040	\$655,538	<b>\$1,003,699</b>
Rail	\$20,000										<b>\$20,000</b>
Other						\$1,360,000		\$635,831	\$1,157,161		<b>\$1,050,997</b>
<b>Total</b>	<b>\$37,553,673</b>	<b>\$34,104,584</b>	<b>\$29,975,744</b>	<b>\$40,678,511</b>	<b>\$46,559,328</b>	<b>\$21,882,566</b>	<b>\$19,847,951</b>	<b>\$35,088,392</b>	<b>\$53,107,473</b>	<b>\$34,890,211</b>	<b>\$35,368,843</b>



## Uses

[illegible]