

# Chittenden County Municipal Legislative Briefing

## December 8, 2022

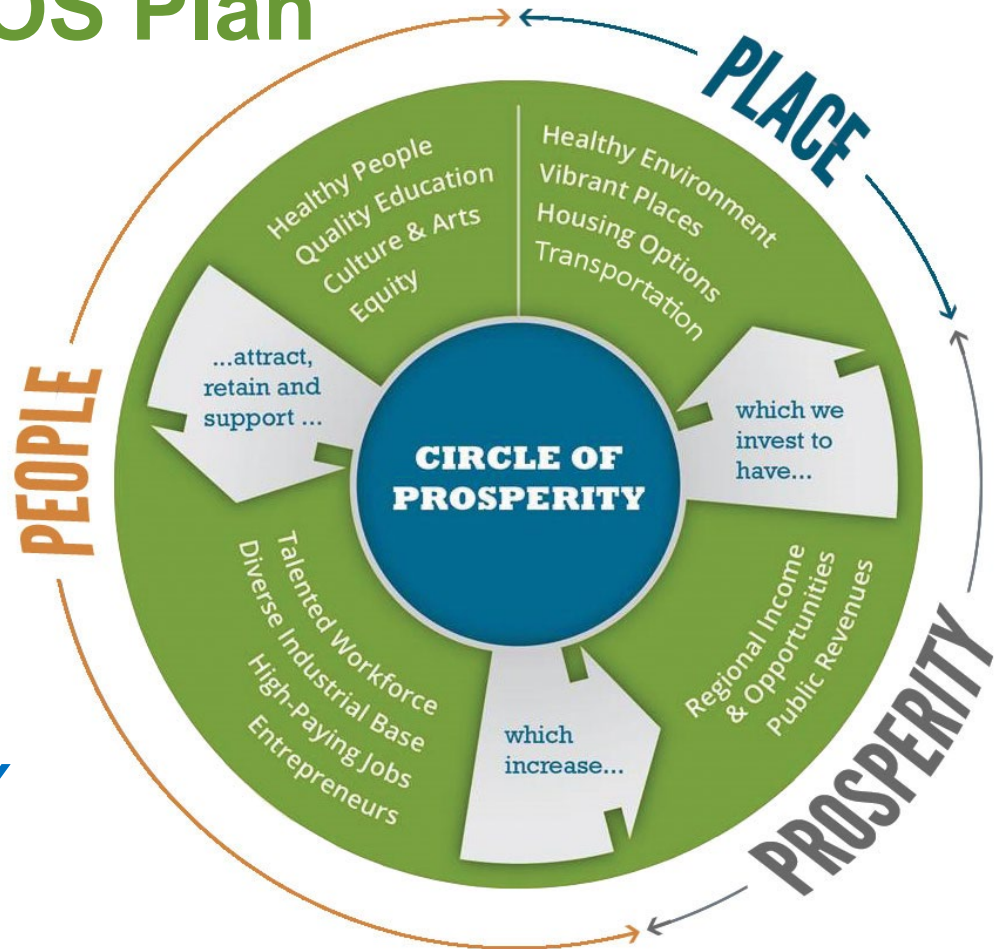
- 8:00 - 8:10 Welcome and Introductions – Catherine McMains, CCRPC Chair
- 8:10 - 8:30 Key Issues Introduction – Charlie Baker, CCRPC Executive Director **CHANGES in RED**
- Smart Growth Investment
    1. Water and Sewer
    2. Permit System
    3. Housing
    4. Climate/Energy
    5. Transportation
  - Economic Recovery
    1. Workforce
    2. Broadband
  - Governance/Funding
    1. Racial Equity
    2. Open Meeting Law
    3. Regional Dispatch Start-up
    4. Cannabis
    5. Transit Revenue Options
    6. Planning Funding
- 8:30 - 9:00 Discussion

# Implementing Our ECOS Plan

- **Update state laws &** use federal and state funds to increase smart growth investments.
  - Economic recovery
  - Housing
  - Water/Sewer
  - Climate change
  - Equity

• Circle of Prosperity →

• **WHEN CHITTENDEN COUNTY PROSPERS, VERMONT PROSPERS**



# 1. Smart Growth - Water and Sewer

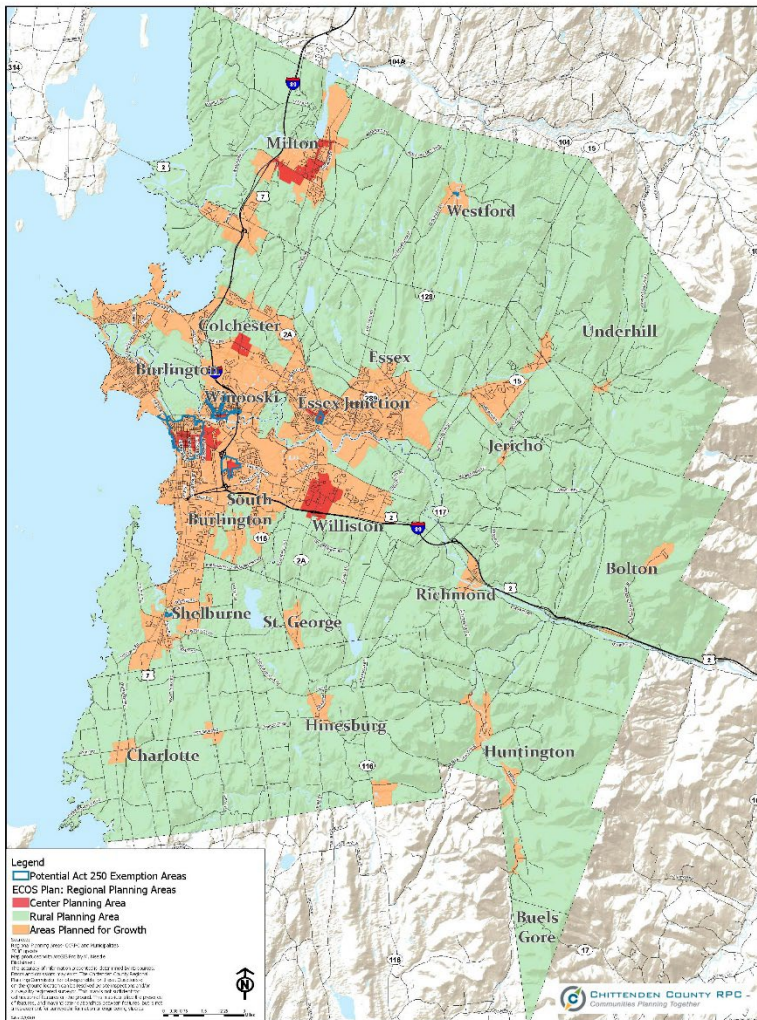
- To support smart economic growth and housing, water and sewer are essential. Key recommendation of Climate Action Plan.
    - *Invest federal funds to upgrade existing water and sewer systems (combined sewer overflows, mobile home parks, etc.)*
    - *Invest federal funds in new water and sewer systems in villages and existing communities – lead with State action*
    - *100% planning funds are great!*
    - *Need stronger state funding commitment for engineering and construction – 80% grants rather than loans*
    - *Authorize RPCs to provide assistance beyond planning stage*
-

## 2. Smart Growth - Permit System

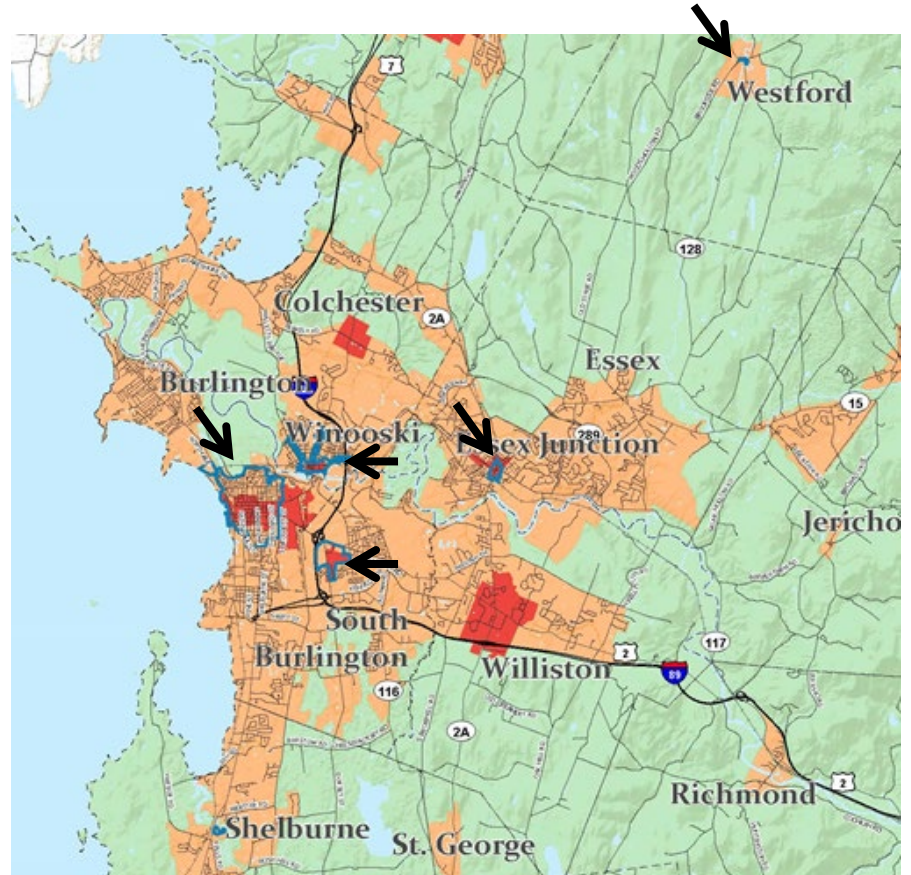
- *Update Act 250 & Chapter 117 to accomplish smart growth goals: encouraging development in our centers and discouraging rural development*
  - *Provide delegation of Act 250 jurisdiction to municipalities with good bylaws for smart growth development; allow villages and existing communities statewide to achieve the same benefit as our downtowns*
  - *End duplication of review between Act 250, State agencies, and municipalities. Improve how different agencies and permit reviews relate to each other. – single review(er) for each issue*
  - *Provide pathway for existing Act 250 permit holders in areas exempted to get out from under Act 250 jurisdiction, as adjacent properties can*
  - *Continue investments in modernizing zoning*
  - *Improve Chapter 117 to decrease discretion at DRB stage and prioritize achieving what is called for in town plans and zoning.*
-



# Future Land Use Map



# Neighborhood Designation Areas



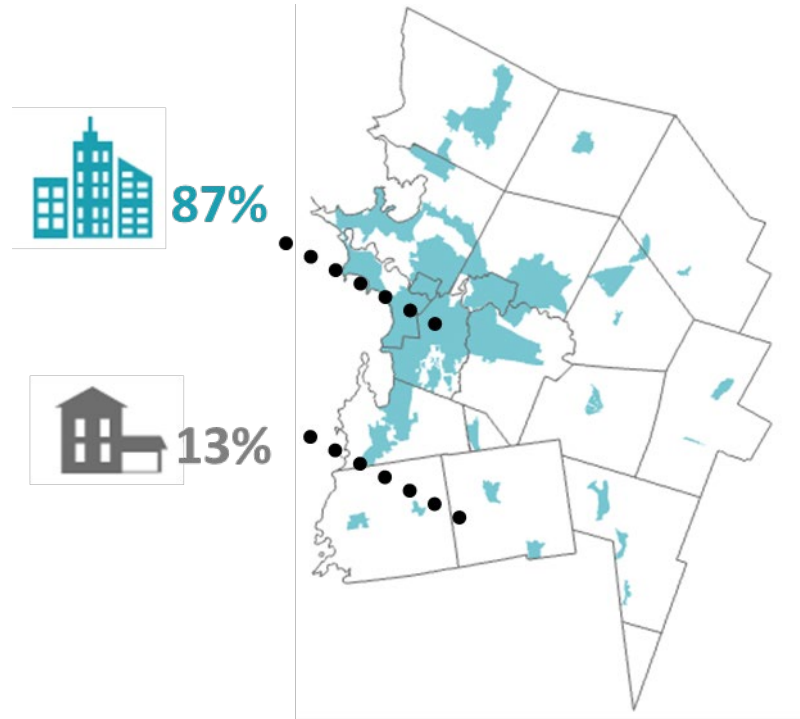
5 of 7 statewide

# 3. Smart Growth - Housing

- *See previous.*
- *Invest in housing development, especially affordable.*
- *Invest in weatherization, especially for lower income*
- *Improve system for ensuring minimum health and safety standards are met for rentals*
- *Review lending practices, increase tax credits*

## Homes Built in Chittenden County 2017-2021

5-Year Average for Net New Units



Update #'s if needed

# 4. Smart Growth – Climate/Energy

- **Initial Climate Action Plan and Draft Comprehensive Energy Plan review**
  - **CCRPC adopted Regional Energy Plan in 2018** to achieve 90% renewable by 2050. Working with municipalities to implement enhanced energy plans
    - *Weatherization, energy efficiency, and energy conversions*
    - *State energy codes need improved inspection & enforcement options*
    - *Consider clean heat standard to address thermal conversion*
    - *Local renewable energy generation and storage*
    - *Alternative modes of transportation – smart growth & investments in broadband, ridesharing, bus, bike, ped, etc. Electric vehicle transition and charging stations (need >89% of passenger cars/trucks to be EV), including e-bikes*
    - *Adaptation - Investments in electric grid transmission system and resiliency of bridges, culverts, and roads*
    - *Thank you for H.518 Municipal Energy Resilience Initiatives*
- 

2021 Municipal Legislative Briefing

# 5. Smart Growth - Transportation

- 33% of workers in Chittenden County live outside County compared to 25% in 2002. Causes multiple issues: housing, energy, traffic, etc.
- Last 10 years investment in Chit Co has been about **15%** of State \$
- ***Invest in Capital Program & Transportation Improvement Program Projects***
  - ***Circ Alternative Projects need to keep moving***
  - ***Continue to invest in placemaking: streetscapes, walking, biking, transit, electric vehicles, water quality, and climate resilience.***
  - ***Consider using state funds for paths and sidewalks.***
  - ***Re-examine speed limit setting process.***
  - ***Increase investment in technology: smart traffic signals, testing for autonomous and connected vehicles***
  - ***Increase town highway and bridge funding***



# 1. Economic Recovery - Workforce

- CCRPC & GBIC received funding from EDA to update our Comprehensive Economic Development Strategy with Central Vermont, Addison, and Rutland RPCs and RDCs.
  - Vermont and Chittenden County labor market is at virtual full employment. However, both the state and the County have seen a significant decline in available labor (**40,000+ (>10%) drop in Vermont** since 2009).
  - Workforce is one of GBIC's major areas of concentration. Access and exposure to Career Technical Education (CTE) and professionalization of technical & vocational training within education centers is a critical need for both youth and adults. We continue to work with the State to find ways to enhance these opportunities.
  - VSAC-VSC report Senior Survey of the Class of 2012 to 2016
    - ~50% of Vermont High School Graduates either go on to NO higher education or are no longer enrolled within 3 semesters.
- *Develop Career Pathways program and continue to implement the State workforce development programs in Act 189 report.*

## 2. Economic Recovery - Broadband

- 100/100 service is the standard, improves economic equity and job growth, decreases driving, important for smart electric grid; be careful with encouraging sprawl and forest fragmentation
  - 75% of Chittenden County sites have 25/3 service or less
  - **4% (~2,000) have 4/1 or less service – see map**
- ***CUD has been formed by Essex, Essex Junction, Shelburne, South Burlington, and Williston***
  - ***Broadband Board has been very supportive – developing planning options for Chittenden County CUD (should be completed by end of 2022)***
  - ***More funding that can be used in Chittenden County is likely to be needed – perhaps federal grants***

# 1. Governance/Funding – Racial Equity

- This is one of our ECOS Plan Strategies. Addressing systemic racism will take a concerted effort by everyone and will benefit everyone.
- CCRPC retained a racial equity consultant to deepen our understanding, help our municipalities, and help us create meaningful change. **Completed CCRPC Organizational Equity Assessment Report in 2021. Formed Equity Advisory Committee in 2022. Hired Equity and Engagement Manager – November 2022.**
  - ***Conduct equity impact assessments on plans, policies, and investments recommended above.***
  - ***Environmental justice.***
  - ***Support implementation of VTrans' Transportation Equity Framework.***

## 2. Governance/Funding – Open Meeting Law

- The flexibility allowed during the state of emergency was helpful.
- *Update statute to **permanently** allow for virtual meetings if desired by the public body. +*

# 3. Governance/Funding – Regional Dispatch Start-up

- As the State looks for alternatives to the current system, we created a Chittenden County Public Safety Authority for the purpose of regional dispatch. This is a real need that is increasing as time goes by.
- This concept works financially and operationally in the long term and will provide better service; however, there is a significant amount of capital needed for start-up
  - *There is \$2.1 million total needed for capital.*
  - *So far, the municipalities have come up with about \$325,000; \$750,000 is proposed for funding by Congressman Welch*
  - ***Thank you for supporting State capital funding to help get this project off the ground. Still a gap of about \$1 million.***



# 4. Governance/Funding – Cannabis

- Local municipalities (via voter approval) may opt in to allow retail cannabis sales in their community.
- Municipalities cannot issue blanket prohibitions of cannabis establishments (cultivation, testing, warehousing, and distribution) via ordinance or zoning, but can regulate via zoning and local licensing boards.
- ***Allow municipalities agreeing to allow retail sales to receive a portion of the excise tax revenue***
- ***Consider more ability for municipalities to regulate the number of retail establishments?***

# 5. Governance/Funding – Transit Revenue Options

- The limited ability of the State and municipalities to support transit services with local funding is constraining transit agencies from meeting local demands.
  - The demands for more transit service continues to increase as our population ages and we work to provide transportation options to driving to reduce energy use.
  - There are options to continue fare free service and to remove the pressures on the property tax.
- ***Consider options offered in the Transit Financing Study developed by CCRPC, GMT, and VTrans.***

## 6. Governance/Funding – Planning Funding

- In order to address our economic, housing, climate, energy, water quality, and transportation challenges, more resources are needed for planning and community engagement by RPCs and municipalities.
- ***THANK YOU for the first significant increase in regional planning funding in 20 years.***
- ***Consider an FY23 Budget Adjustment to fully fund municipal planning grant requests: ~\$500,000.***

# CCRPC Current Work

This is only a snapshot of current CCRPC work; for more information view our **2022** Annual Report at [www.ccrpcvt.org/annual-reports](http://www.ccrpcvt.org/annual-reports)

- **Water Quality** | Road erosion inventories and conceptual designs. **Started up Basin 5** Clean Water Service Provider. Assisting towns with wastewater planning.
- **Transportation Studies** | Corridor studies, scoping, safety, traffic signal timing analyses, and inventories.
- **Emergency Management** | Supplemental SEOC staffing, disaster local liaison, FEMA and LGER grant assistance, local emergency management plans
- **Energy Plans** | Regional Energy Plan; Municipal Energy Plan assistance with CCRPC's Determination of Energy Compliance.
- **Housing** | Building Homes Together campaign and regional housing convenings.
- **Land Use** | Municipal plan, bylaw, and capital program assistance.
- **Equity** | Hosted summit on November 6, 2021. **Completed** Equity Assessment Report. **Formed Equity Advisory Committee. Hired Equity and Engagement Manager. Partner in Dept. of Health – Health Equity grant work.**

# CCRPC Resources

- **ECOS Scorecard** | 90+ indicators tied to our ECOS Plan goals relating to people, place, and prosperity | <https://app.resultsscorecard.com/Scorecard/Embed/8502>
- **Our Communities** | A link to all of our municipalities; our current and past work with each; links to their websites; basic data | <https://www.ccrpcvt.org/our-communities/>
- **Current Transportation Projects** | Organized by topic | <https://www.ccrpcvt.org/our-work/transportation/current-projects/>
- **ECOS Annual Reports** | Data and progress on ECOS Regional Plan implementation | <http://www.ecosproject.com/annual-report>
- **ECOS Map Viewer** | State, regional & municipal data layers | <http://map.ccrpcvt.org/ChittendenCountyVT>
- **Data** | Links to various transportation, socioeconomic, and geo data | <https://www.ccrpcvt.org/our-work/transportation/data>



# Thank you!

## We are a resource to you!

### Questions/Discussion?

Please contact us for any assistance or to find people to testify:

Charlie Baker, Executive Director

[cbaker@ccrpcvt.org](mailto:cbaker@ccrpcvt.org)

802-735-3500 (cell)

[www.ccrpcvt.org](http://www.ccrpcvt.org)

[www.ecosproject.com](http://www.ecosproject.com)

[www.ccrpcvt.org/about-us/commission/policies-positions/](http://www.ccrpcvt.org/about-us/commission/policies-positions/)