



Vermont Wetland Map Updates

Laura Lapierre,
Wetlands Program Manager
June 7, 2022

Vermont Wetlands Program

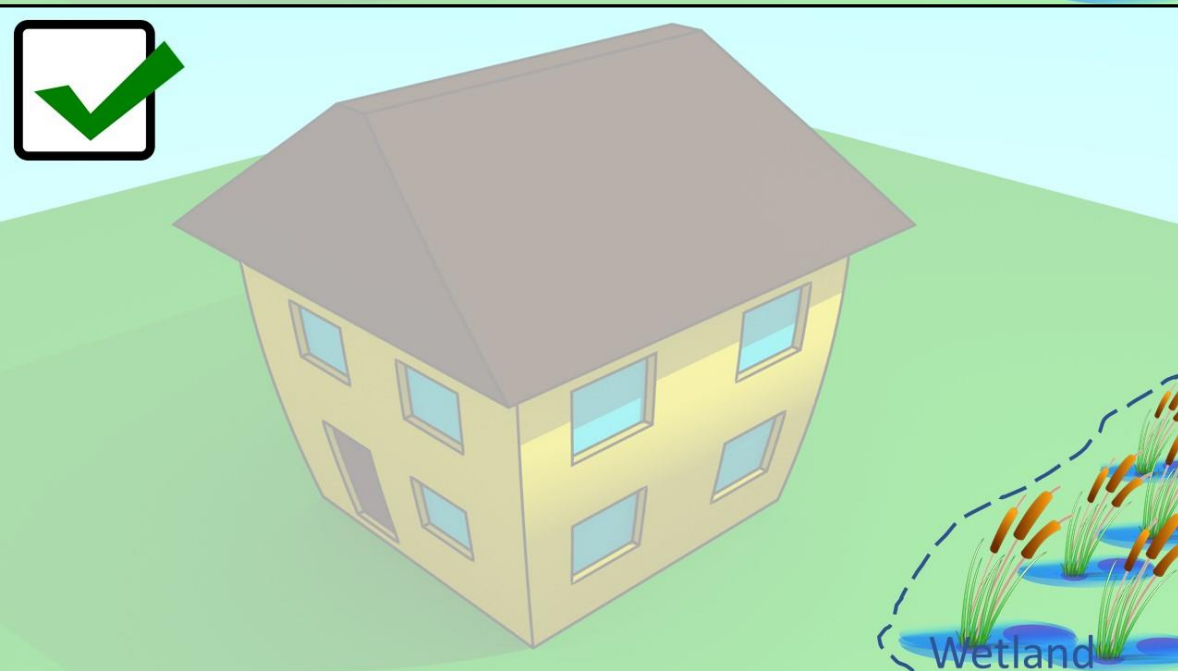
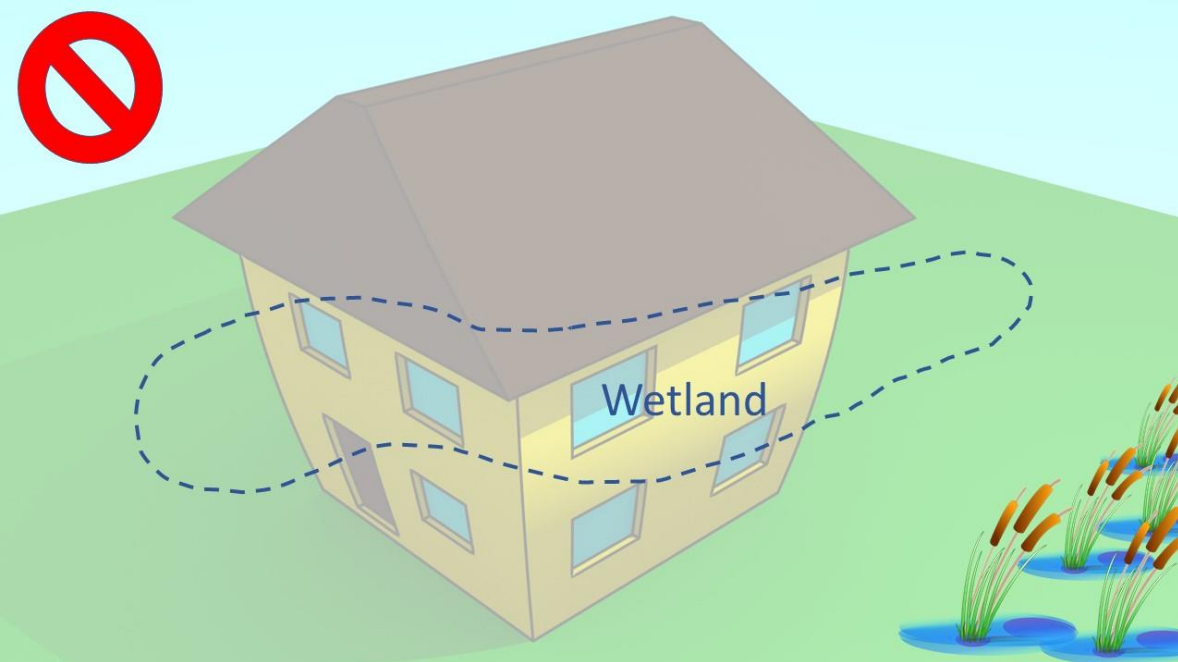
- Identify wetland locations with maps and site visits
- Assess the health of wetlands
- Support voluntary wetland restoration
- Implement Vermont Wetland Rules
 - Review project plans
 - Require wetland avoidance where possible
 - Ensure no net loss of wetland function or value





Wetland Function and Values

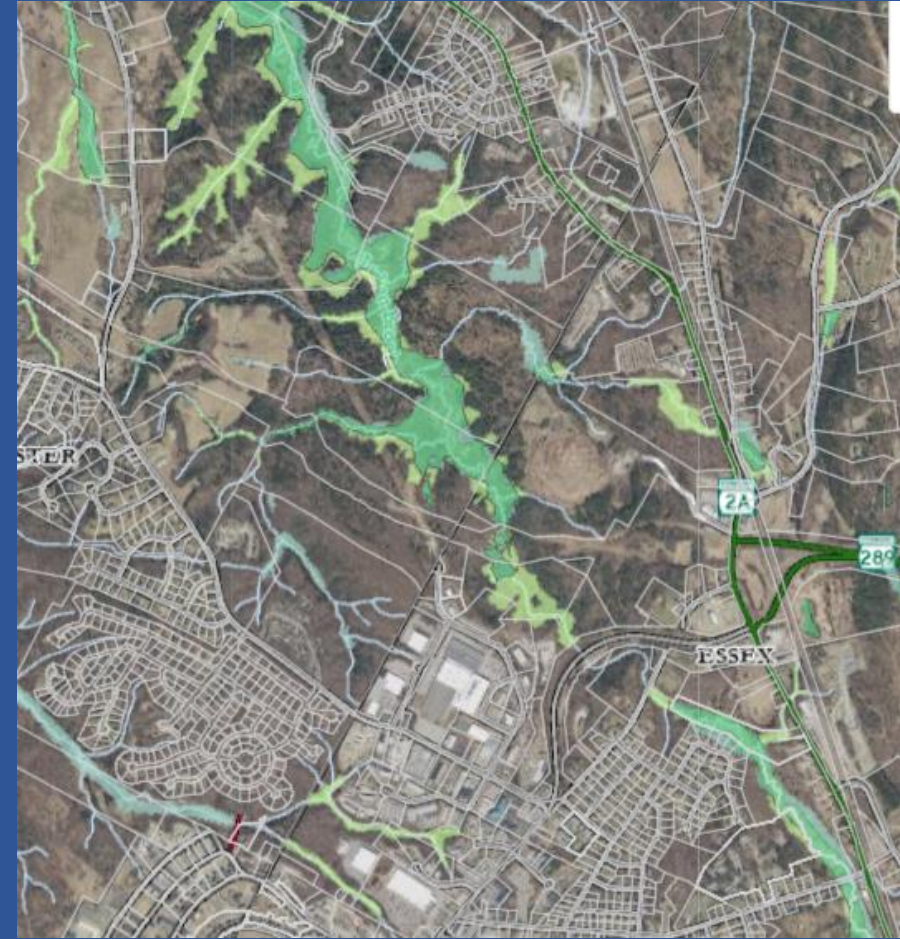
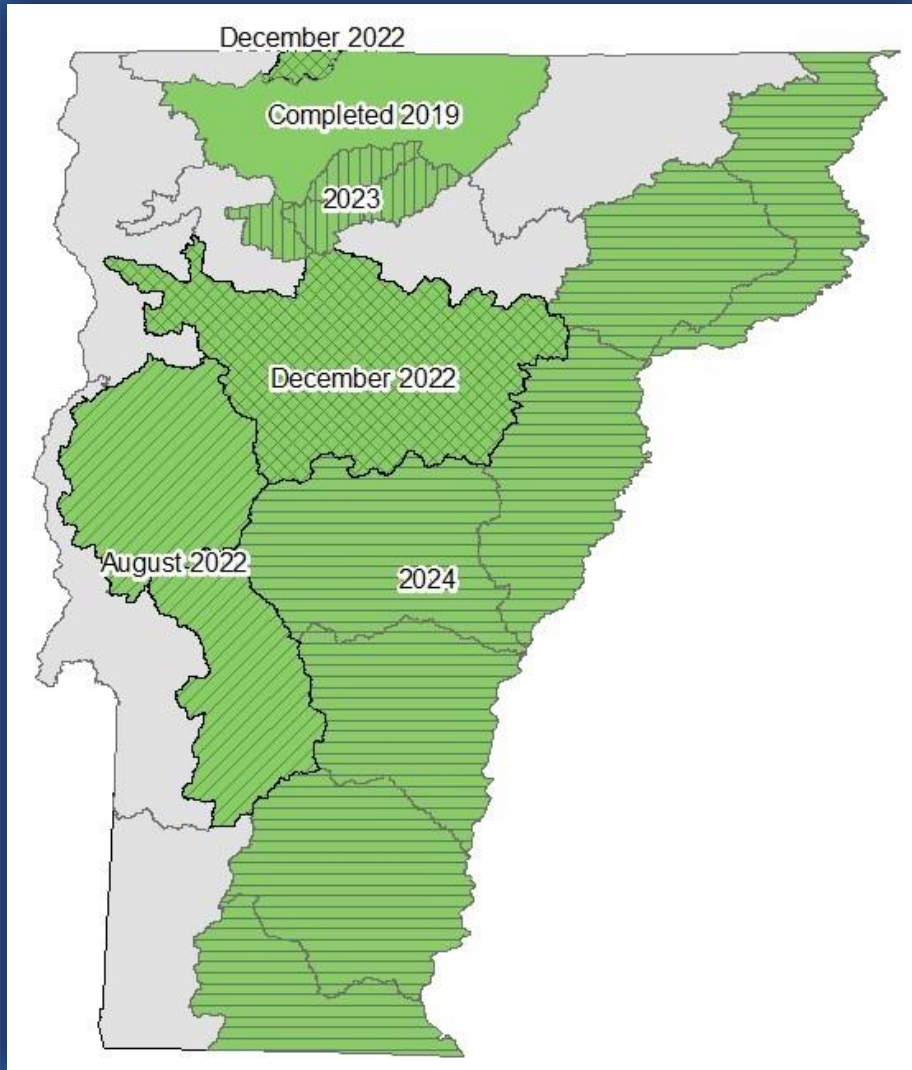
Historically Vermont has lost
35% of wetland area.
~4% is wetland today.



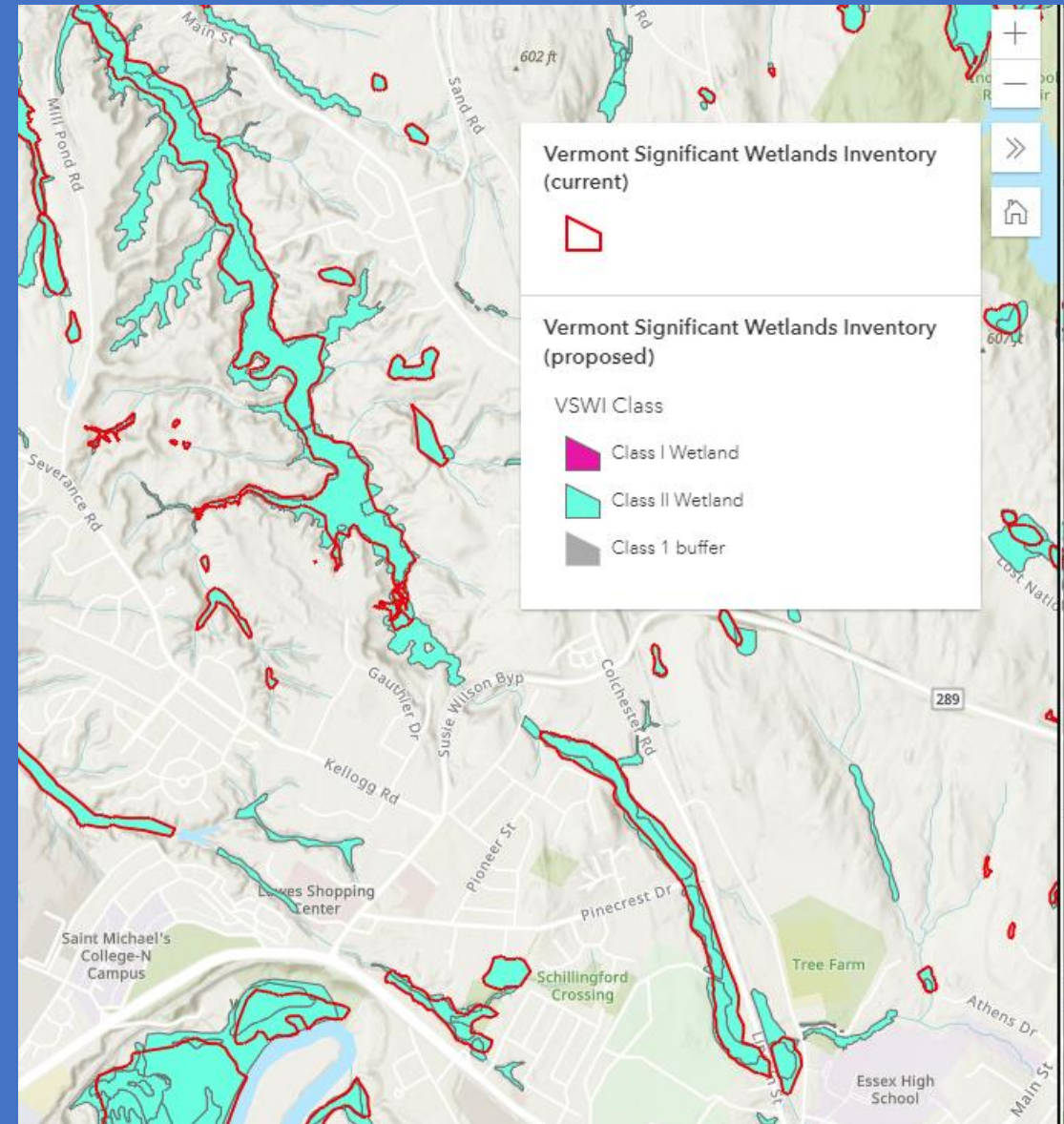
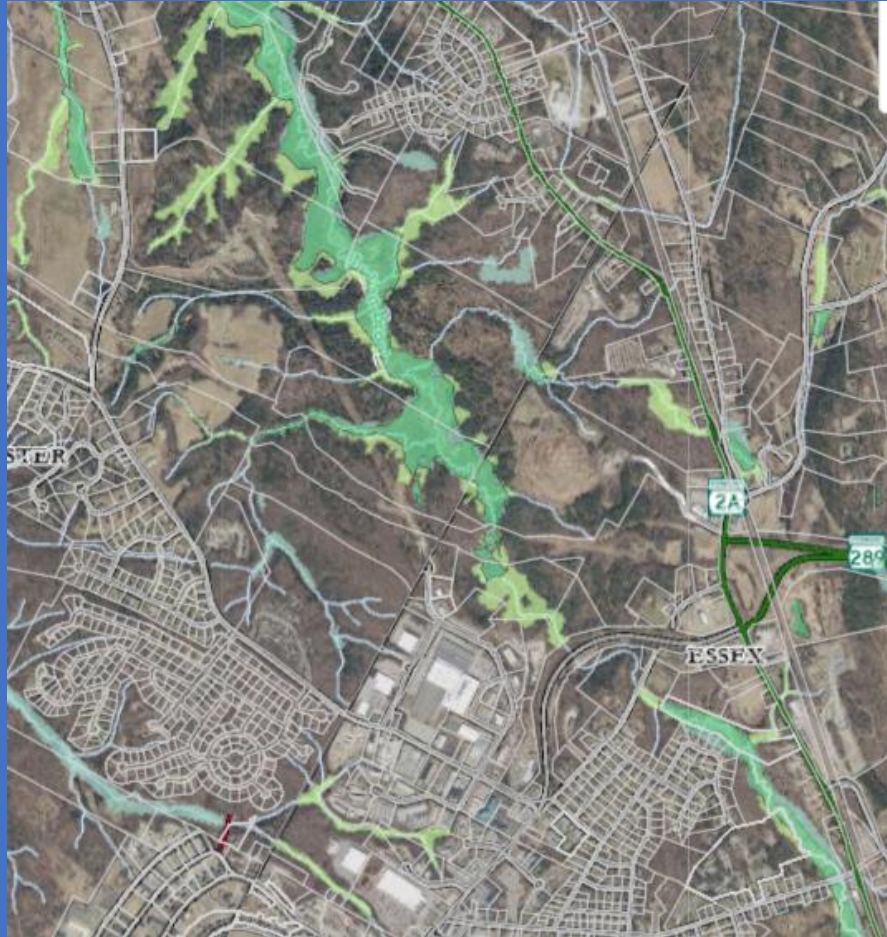
Unmapped Wetlands need a Wetland Determination for Addition to VSWI Map

- a. The wetland is of the same type and threshold size as those mapped on the VSWI maps: i.e.; open water (pond); emergent marsh; shrub swamp; forested swamp; wet meadow; beaver pond or beaver meadow; bog or fen; and **greater than 0.5 acres**.
- b. The wetland contains dense, persistent non-woody vegetation or woody vegetation, and in either instance is **adjacent to a stream, river or open body of water, and is over 2,500 square feet in size**.
- c. The **wetland is a vernal pool** that provides amphibian breeding habitat. Vernal pool is defined in §2.39 of the VWR as: a small wetland in a shallow natural depression that typically fills with water during the spring and/or fall and may dry during the summer. Vernal pools have no permanent inlet stream and no viable populations of fish. Vernal pools are typically sparsely vegetated with herbaceous plants and are shaded by trees from the surrounding upland forest. Many vernal pools provide critical breeding habitat for amphibians.
- d. The wetland is a **headwater wetland**. Headwater wetland means a naturally occurring wetland that is above 2,500 feet in elevation and contributes to a stream (VWR §2.18).
- e. The wetland contains a species that appears in the Vermont Natural Heritage Inventory (VNHI) database as **rare, threatened, endangered or uncommon**; or is an **exemplary natural community** as mapped by VNHI.

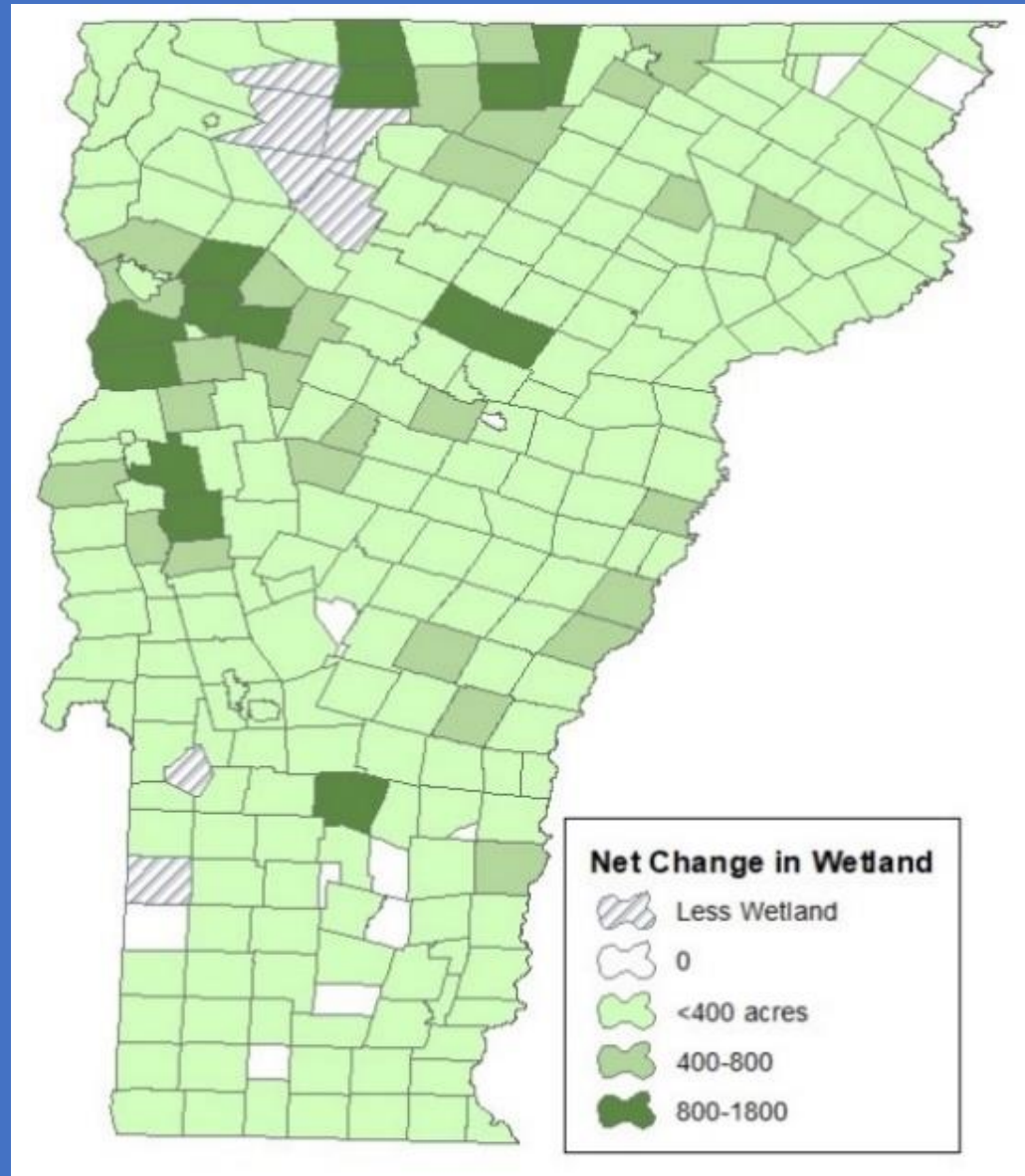
Wetland Map Updates Underway



Advisory Wetlands to VSWI



What are the Changes?



Towns with the Most Wetland Additions

Charlotte

Essex

Enosburg

Middlebury

Worcester

Calais

New Haven

Westfield

Berkshire

Richmond

Troy

Shelburne

Williston

Mt. Holly



VERMONT DEPARTMENT OF
ENVIRONMENTAL CONSERVATION
WATERSHED
MANAGEMENT DIVISION
WETLANDS PROGRAM

Thanks for submitting a location-specific comment on the proposed changes. Details will be passed along with comments from this form to an ecologist for review. Remember, the map is intended to show the general location of protected wetlands; actual protected wetland boundaries need to be determined in the field.

Email address*

Comments*

255

Please do not submit wetland violation complaints on this form, violations should be reported [here](#).

Map and Rule Update Process



A person wearing a green jacket and a blue hoodie is leaning over a wooden fence, holding a smartphone to take a photo of a plant. The background is filled with lush green foliage. The text "Find Out More" is overlaid in white on the right side of the image.

Find Out More

Visit the Wetland
Rulemaking page:

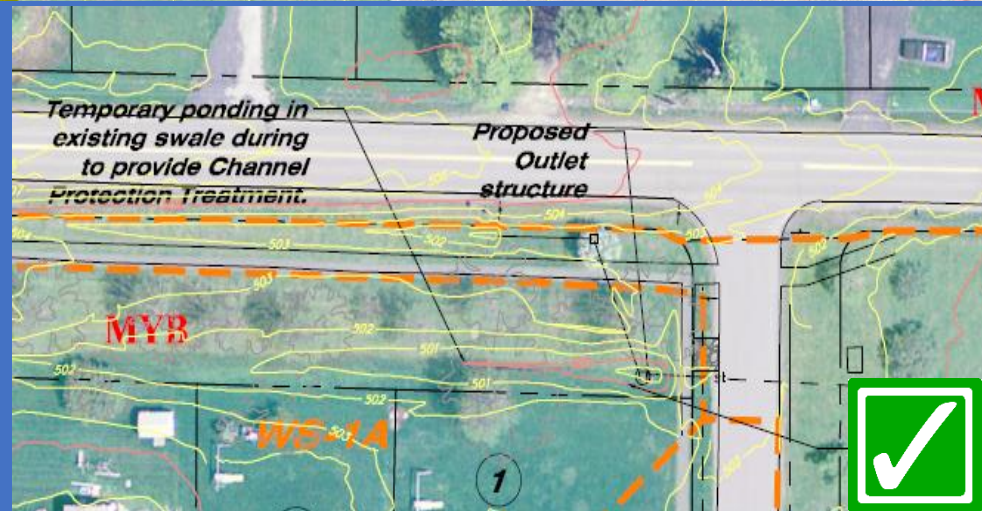
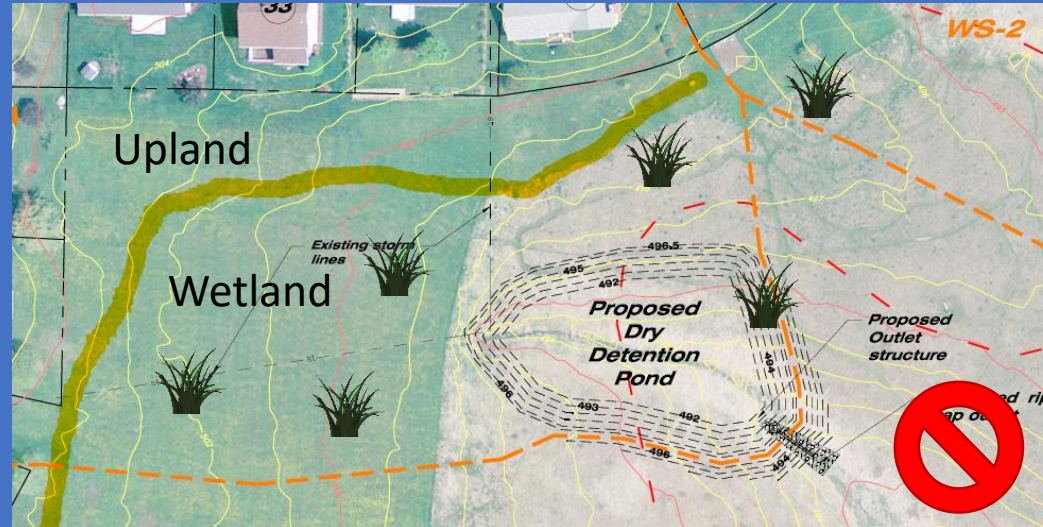
<https://dec.vermont.gov/watershed/wetlands/rulemaking>

View the Interactive Map:

<https://vtanr.maps.arcgis.com/apps/instant/nearby/index.html?appid=f862dbe013c54fc9be6fa7d26b8e1f2d>

Photo credit: Valley News

Road Run-off and Muni Stormwater Review



Wetland Restoration

LAKE CHAMPLAIN BASIN WETLAND RESTORATION PLAN December 31, 2007



Prepared for
VERMONT AGENCY OF NATURAL RESOURCES
VERMONT DEPARTMENT
OF
FORESTS, PARKS AND RECREATION
LAKE CHAMPLAIN CLEAN AND CLEAR ACTION PLAN



Prepared by



PIONEER ENVIRONMENTAL ASSOCIATES, LLC.
CONSULTING SCIENTISTS



Wetland Restoration Potential Layer

Learn more:

<https://dec.vermont.gov/watershed/wetlands/protect/re-store>

The Wetland Restoration Potential Layer (2017) is found in the Wetland Inventory Map under “Wetland Map”, “Watershed Protection”.

VERMONT Wetlands Inventory Map
Vermont Agency of Natural Resources
vermont.gov

Layers

WetlandsTheme

Filter Layers...

AE/VCE

☒ Vernal Pools Unconfirmed – AE/VCE

☐ VT List of Priority Rivers and Streams

☐ VT List of Priority Lakes and Ponds

☒ Wetland Restoration Potential (Lake Champlain 2017)

0.600000 - 1.000000

1.000001 - 2.000000

2.000001 - 3.000000

3.000001 - 4.000000

☒ Wetlands - VSWI

☐ Wetlands - VSWI Advisory Layer

☐ Wetland VRAM - 2021

☐ DFIRM Floodways

Search...

Quick Tools...

Wetland Restoration Potential

☆ Wetland Restoration Potential

Prioritization of sites based on original Phosphorus retention score (60%), the calculated site area (30%) and proximity to floodplains and river corridors (10%). A higher score reflects a greater (modeled) potential for wetland restoration.

This wetland site's restoration potential score is 4.

Phosphorus Retention Weighted Score: 2.4
Size Weighted Score: 1.2
River Corridor and Floodplain Proximity Weighted Score: 0.4

[PRIORITIZATION PROJECT INTRODUCTION](#)

[View Additional Details](#) [Add to Results](#)

Disclaimer Layers

BING Bas...

0 0.3 0.6km

© 2022 Microsoft Corporation, © 2022 Maxar, ©CNES (2022)

Other Helpful Links

Wetland Screening Tool:

<https://anrmaps.vermont.gov/websites/wetlandScreening/>

Wetland Inventory Maps: <http://tiny.cc/wetlands>

Landowners Guide To Wetlands:

<https://dec.vermont.gov/watershed/wetlands/what/guide>

Hire a Wetland Consultant:

<https://dec.vermont.gov/watershed/wetlands/what/id/wetland-consultant-list>

Program Inquiry Form:

<https://dec.vermont.gov/watershed/wetlands/contact>

You Tube Channel:

<https://www.youtube.com/watch?v=oDzL6NRIGgs&list=PLLVJCF6LbmXkg4ZPOiAg2YybklSkikMQ>