

Battery Street Corridor Scoping Study

Advisory Committee Meeting #2
July 27, 2023



CHITTENDEN COUNTY RPC
Communities Planning Together



Agenda

- Welcome + Re-Introductions
- Public Comment Period
- Public Involvement Plan Update
- Project StoryMap
 - Community Engagement Summary
 - Draft Purpose + Need Statement
- Mini Design Charrette
- Next Steps

01 || Re-Introductions

A blue-tinted photograph of a park scene. In the foreground, a wide stone staircase leads up from the bottom left. To the right of the stairs is a paved path that curves through the park. Several benches are visible along the path. The background is filled with various trees, some with bare branches and others with dense foliage. The overall atmosphere is quiet and serene.

Project Team



→ Drew Gingras
→ Karen Sentoff



CHITTENDEN COUNTY RPC
Communities Planning Together

→ Jason Charest
→ Eleni Churchill

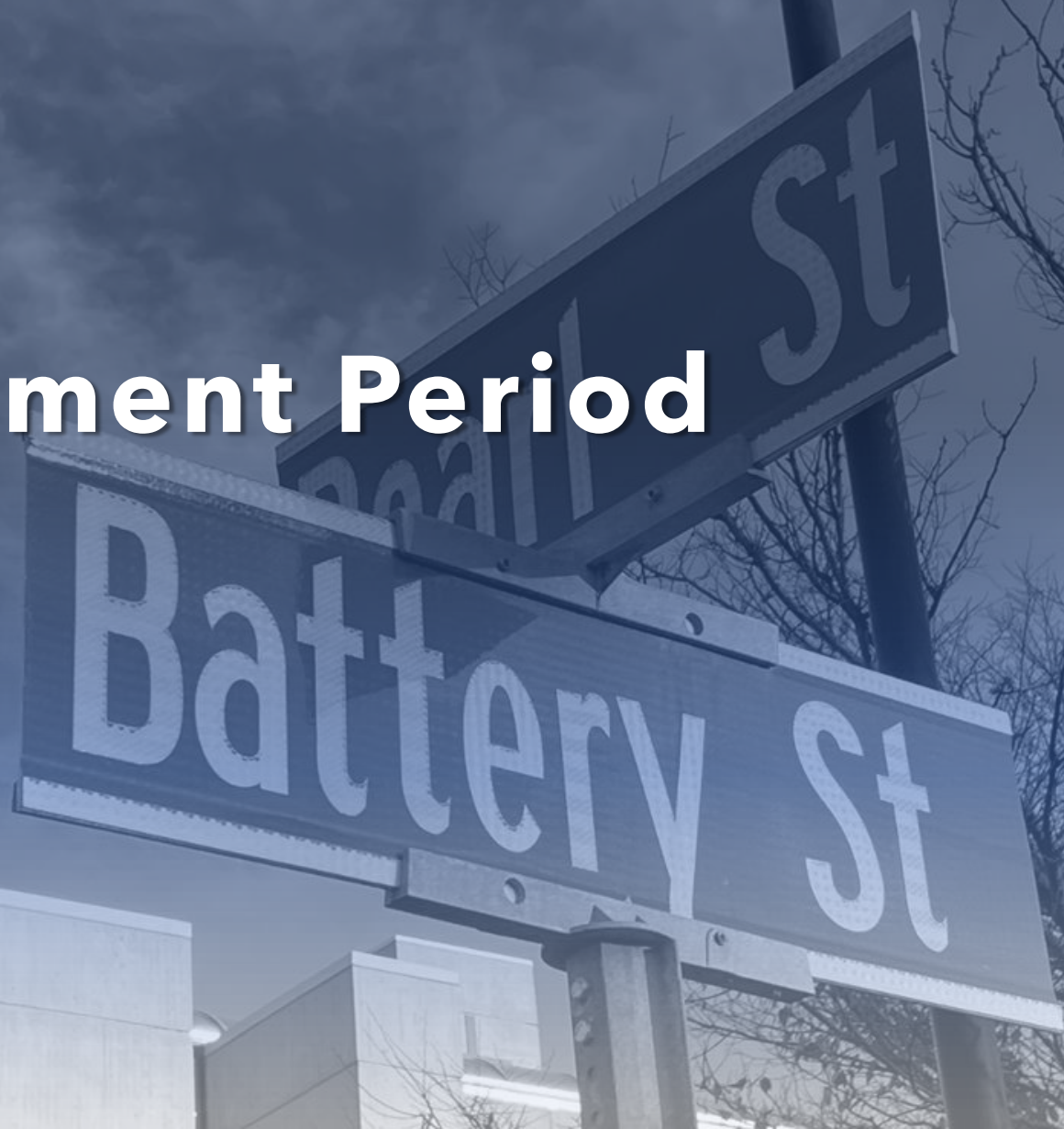


→ Dayton Crites
→ Ravi Venkataraman

Advisory Committee

- Barbara Alsop & Ali Hamedani | Ward 3 Representatives
- Terry Rivers | Ward 5 Representative
- Norm Baldwin | City Engineer
- Gene Bergman | City Councilor
- Phet Keomanyvanh | Office of Racial Equity, Inclusion & Belonging
- Kelly Devine | Burlington Business Association
- Charles Dillard | Office of City Planning
- Brendan Hogan | DPW Commissioner
- Karen Paul | City Councilor
- Sophie Sauve | Burlington Parks, Rec, & Waterfront
- Jamie Smith | Green Mountain Transit
- Jonathon Weber | Walk / Bike Council

02|| Public Comment Period

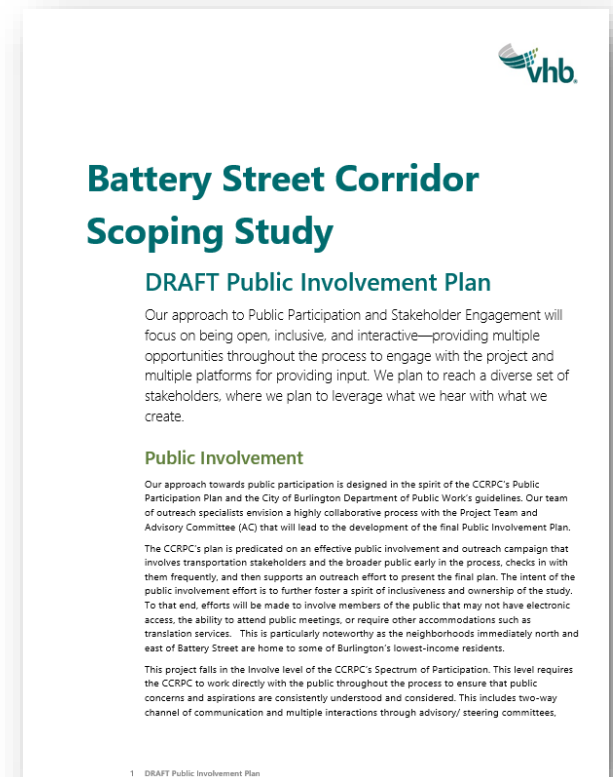




03|| Public Involvement Plan Update

Public Involvement Plan Update

- **Public Involvement Plan is designed to be an evolving document as the project progresses**
- Updates that have been made:
 - Coordination with REIB
 - Reflections on Public Meeting #1
 - Summary of Local Concerns Engagement
 - Pop-Up Style and Targeted Engagement
 - Survey
 - Translation Services
 - Reflections on Engagement Events and Targeted Community Conversations





04|| Project StoryMap

Story Map

Project StoryMap

- Existing Conditions
- Community Engagement
- Draft Purpose + Need Statement



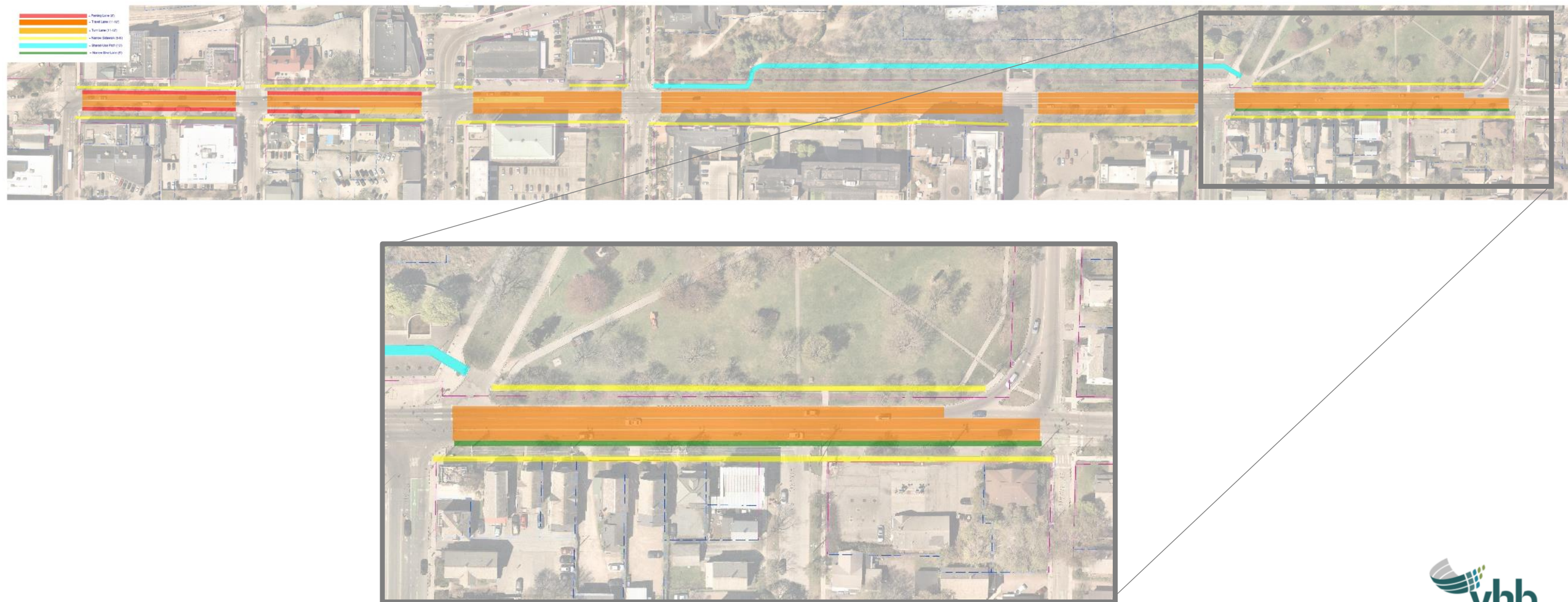
Battery Street Corridor Scoping Study

Chittenden County Regional Planning Commission (CCRPC)

05|| Mini Design Charrette

A blue-tinted photograph of a city street intersection. In the center, a person on a bicycle is stopped at a crosswalk. To the right, a dark-colored sedan is parked or stopped. On the right side of the image, a multi-story brick building with the name 'GATEWAY SQUARE' is visible. A traffic signpost in the center-right shows a 'TO 89' sign with a right-turn arrow, and below it, a 'TO 27' sign with a right-turn arrow. The sky is overcast with dark clouds. The text '05|| Mini Design Charrette' is overlaid in a large, white, sans-serif font across the middle of the image.

Mini Design Charrette



06|| Next Steps



Next Steps

- Finalize Purpose & Need Statement
- Develop & Evaluate Conceptual Alternatives
- Public Meeting #2 & Continued Engagement Re: Conceptual Alternatives
- Advisory Committee Meeting #3
- Alternative Refinement
- Advisory Committee Meeting #4
- Recommendation of Preferred Alternative
- Draft Report and Implementation Plan
- TEUC / City Council Meetings

Contact Us



Jason Charest
Senior Transportation Planning Engineer

Chittenden County Regional Planning Commission
110 West Canal Street, Suite 202
Winooski, VT 05404

802-861-0127
jcharest@ccrpcvt.org



Drew Gingras, PE
Project Manager

40 IDX Drive, Bldg 100, Ste 200
South Burlington, VT 05403

802-391-5569
dgingras@vhb.com