

Overview of FEMA Planning Guides

Dan Berkman, National Integration Center



FEMA

Dan's Background

- New Chittenden County Resident
- Montgomery County, MD Office of Emergency Management and Homeland Security
- Joined FEMA: 2016
 - Interagency Recovery Coordination
 - National Integration Center
- Projects:
 - Elected Officials Guide
 - Climate Adaptation Planning Guide
 - SLTT Recovery Preparedness Working Group



National Integration Center

In coordination with state, local, tribal, and territorial (SLTT) and federal partners, and private sector and nongovernmental stakeholders, the National Integration Center (NIC) ensures the ongoing management and maintenance of the National Incident Management System (NIMS) and National Planning Frameworks while developing preparedness guidance and resources for emergency managers, in accordance with 6 United States Code of Law (U.S.C.) § 319.

Benefits of the NIC



Provide guidance, resources, and tools to help you prepare before, during, and after a disaster.



Collaborate with stakeholders to encourage your ideas and receive implementation support.



Access National Incident Management System (NIMS) information to help you identify qualified resources and coordinate mutual aid.



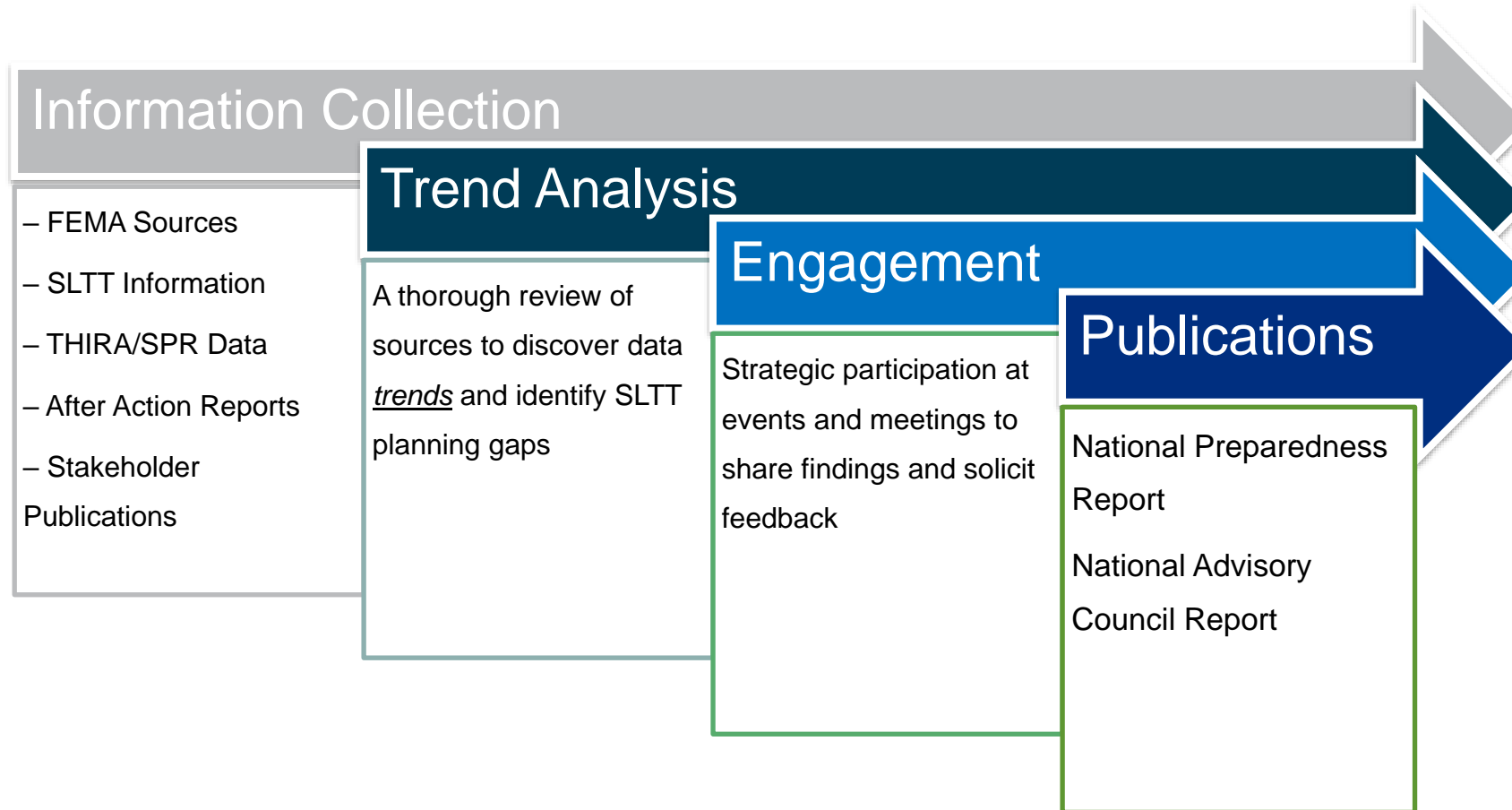
Align your plans with national guidance to streamline operational assistance for emergency planning.

NIC Service Lines

Stakeholders can benefit from engaging the NIC’s Planning Guidance, NIMS Guidance and Tools, and NIMS Resource Management.

Planning Guidance	NIMS Guidance and Tools	NIMS Resource Management
<p>The NIC engages stakeholders and conducts strategic analysis to identify planning gaps across the Whole Community. It uses analytical data to develop guidance and tools for jurisdictions to address those gaps and achieve resilience.</p> <p>Visit:</p> 	<p>The NIC develops guidance and tools for stakeholders to support their implementation of the National Preparedness System while coordinating the development, maintenance and implementation of mutual aid efforts.</p> <p>Visit:</p> 	<p>The NIC develops, implements, and maintains NIMS, which provides stakeholders information and the ability to identify qualified resources and coordinate mutual aid before, during, and after disaster.</p> <p>Visit:</p> 

How We Identify and Write Planning Guide Topics



Existing Products

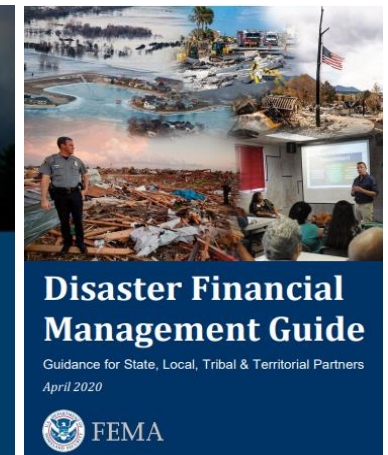
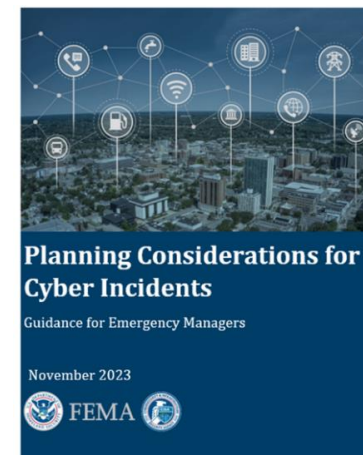
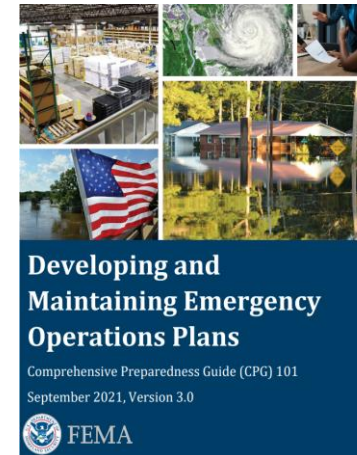
Example topics:

- Evacuation and Shelter in Place
- Supply Chain Resilience
- Private-Public Partnerships



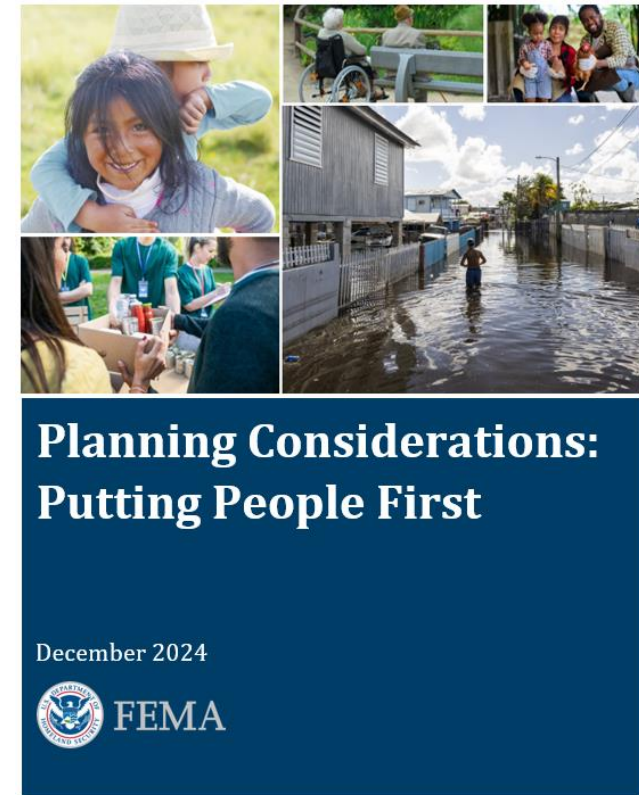
Visit: www.fema.gov/plan

Email us at: NPD-Planning@fema.dhs.gov



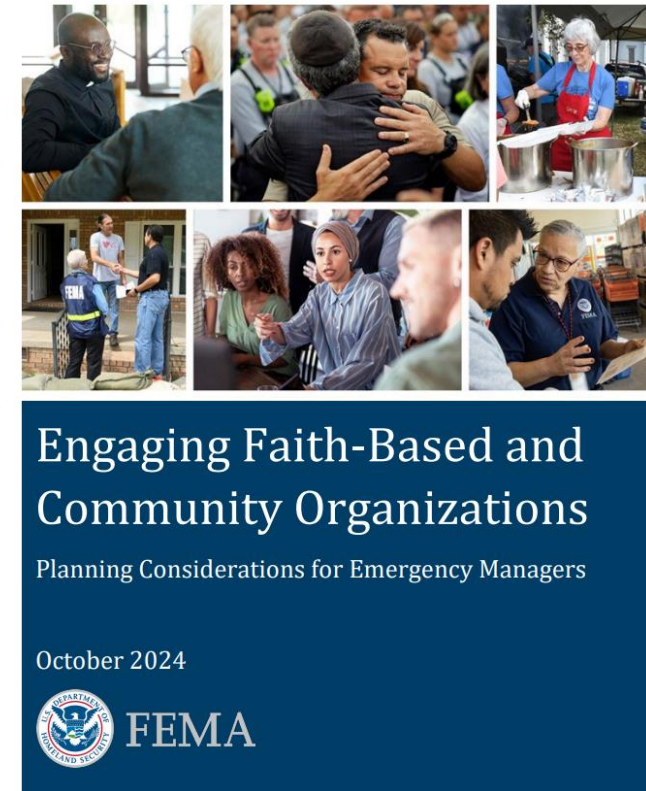
Recent Release: Putting People First

- Introduces a conceptual framework for emergency managers to think about community needs
- Putting People First means engaging and understanding the needs of all populations within a larger community and using those engagements to build relationships and trust and revise plans to meet the needs of all populations.
- Assesses a People First approach in the lens of Access, Process and Outcomes. The guide also reflects a People First approach throughout each step of the Six Step Planning Process



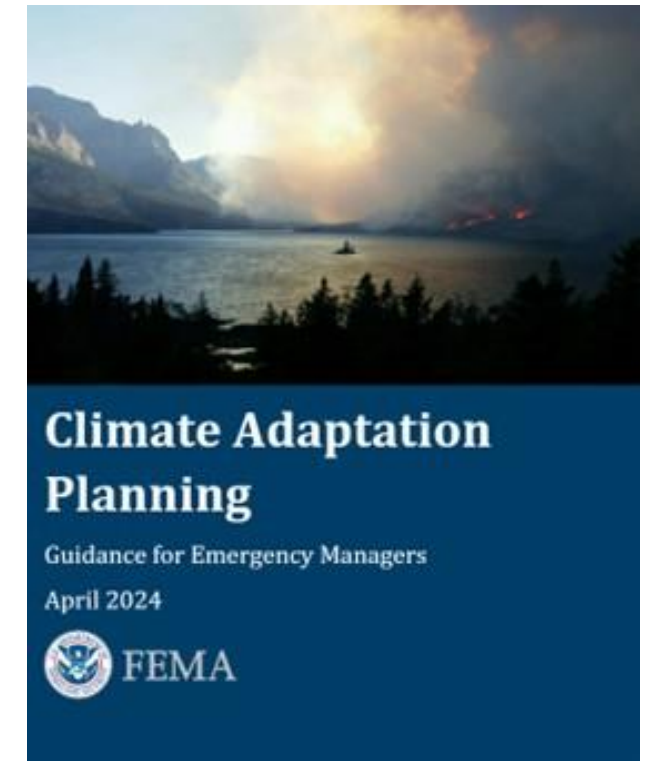
Recent Release: Engaging Faith-Based and Community Organizations

- Developed in coordination with DHS Center for Faith-Based and Neighborhood Partnerships as an update to the 2018 guide
- Outlines best practices for SLTT emergency managers to engage faith-based and community organizations before, during, and after disasters to build community preparedness and emergency management capabilities
- Recorded webinar



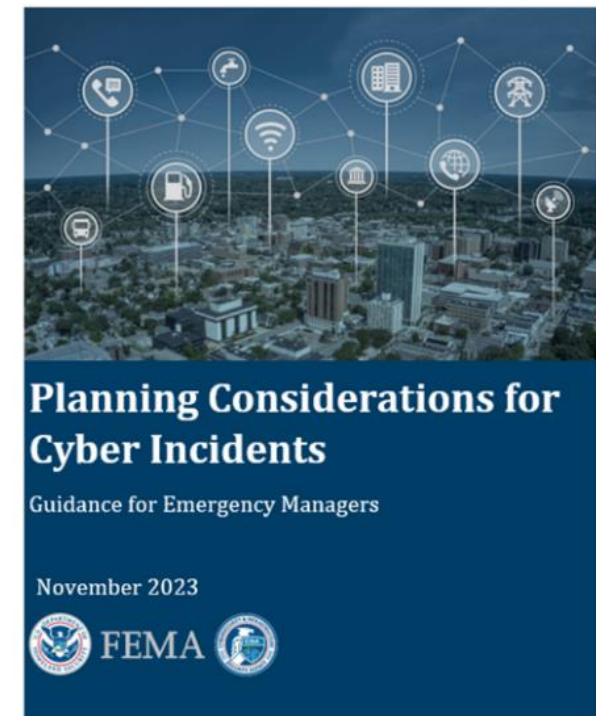
Recent Release: Climate Adaptation Planning for Emergency Managers

- Helps emergency managers incorporate climate adaptation into emergency management planning efforts
- Inform emergency managers of ways to incorporate climate change into risk assessments, future planning, and resource considerations
- Directs planners to resources and decision-support tools relevant to localized impacts
- Supporting documents, Spanish Translation, Video



Recent Release: Planning Considerations for Cyber Incidents

- Planning Considerations for Cyber Incidents: Guidance for Emergency Managers, provides foundational content on cyber incident planning
- Identifies potential roles and responsibilities for emergency managers, planning factors, communications considerations, and planning resources
- Supporting materials include:
 - Overview Summary
 - Critical Cyber Asset Identification and Prioritization Checklist
 - Seven-minute YouTube video



Forthcoming Guides:

- Tribal Leaders Guide: Roles and Resources in Emergency Management
- Donations Management
- Volunteer Management
- Update Disaster Financial Management Guide (2020)
- Other suggestions?

Discussion and Questions

daniel.berkman@fema.dhs.gov

NPD-Planning@fema.dhs.gov



FEMA